

Bost Farm 4C-11-L2 IFR 0' to 17195' Definitive Survey Geodetic Report

(Def Survey)

Report Date:	September 24, 2019 - 11:07 AM	Survey / DLS Computation:	Minimum Curvature / Lubinski
Client:	SRC Energy	Vertical Section Azimuth:	271.610 ° (True North)
Field:	CO, Weld County (NAD 83 NZ) - SRC	Vertical Section Origin:	0.000 ft, 0.000 ft
Structure / Slot:	SRC Energy 07-05N-66W (Bost Farm 5-7 Pad DSU 22) / Bost Farm 4C-11-L2	TVD Reference Datum:	KB 20ft
Well:	Bost Farm 4C-11-L2	TVD Reference Elevation:	4898.000 ft above MSL
Borehole:	Original Hole	Seabed / Ground Elevation:	4878.000 ft above MSL
UWI / API#:	Unknown / 05-123-47664	Magnetic Declination:	7.600 °
Survey Name:	Bost Farm 4C-11-L2 IFR 0' to 17195' Definitive	Total Gravity Field Strength:	999.0247mgn (9.80665 Based)
Survey Date:	May 20, 2019	Gravity Model:	GARM
Tort / AHD / DDI / ERD Ratio:	229.785 ° / 11231.065 ft / 6.792 / 1.569	Total Magnetic Field Strength:	52238.000 nT
Coordinate Reference System:	NAD83 Colorado State Plane, Northern Zone, US Feet	Magnetic Dip Angle:	66.610 °
Location Lat / Long:	N 40° 25' 3.90720", W 104° 49' 42.11040"	Declination Date:	August 18, 2019
Location Grid N/E Y/X:	N 1395735.613 ftUS, E 3187006.811 ftUS	Magnetic Declination Model:	Magvar IFR
CRS Grid Convergence Angle:	0.4340 °	North Reference:	True North
Grid Scale Factor:	0.99996108	Grid Convergence Used:	0.0000 °
Version / Patch:	2.10.782.0	Total Corr Mag North->True North:	7.6000 °
		Local Coord Referenced To:	Well Head

Comments	MD (ft)	Incl (°)	Azim True (°)	TVD (ft)	VSEC (ft)	NS (ft)	EW (ft)	DLS (°/100ft)	Northing (ftUS)	Easting (ftUS)	Latitude (°)	Longitude (°)
Surface	0.00	0.00	0.00	0.00	0.00	0.00	0.00	N/A	1395735.61	3187006.81	40.417752	-104.828364
KB Adjustment	20.00	0.00	256.46	20.00	0.00	0.00	0.00	0.00	1395735.61	3187006.81	40.417752	-104.828364
Begin IFR Survey	106.00	0.62	256.46	106.00	0.45	-0.11	-0.45	0.72	1395735.50	3187006.36	40.417752	-104.828366
	191.00	0.42	223.57	190.99	1.10	-0.44	-1.11	0.41	1395735.16	3187005.70	40.417751	-104.828368
	281.00	1.50	265.69	280.98	2.49	-0.77	-2.52	1.36	1395734.82	3187004.30	40.417750	-104.828373
	370.00	3.60	295.02	369.89	6.22	0.32	-6.21	2.70	1395735.89	3187000.60	40.417753	-104.828386
	460.00	5.66	298.42	459.59	12.77	3.63	-12.67	2.31	1395739.15	3186994.11	40.417762	-104.828410
	550.00	6.14	299.35	549.12	20.99	8.10	-20.77	0.54	1395743.56	3186985.98	40.417774	-104.828439
	640.00	6.17	303.14	638.60	29.38	13.11	-29.02	0.45	1395748.50	3186977.70	40.417788	-104.828468
	730.00	6.31	302.33	728.06	37.75	18.40	-37.25	0.18	1395753.73	3186969.43	40.417802	-104.828498
	820.00	6.31	301.77	817.52	46.28	23.64	-45.63	0.07	1395758.91	3186961.00	40.417817	-104.828528
	910.00	6.16	305.13	906.99	54.58	29.03	-53.79	0.44	1395764.23	3186952.81	40.417832	-104.828557
	1000.00	6.09	304.57	996.47	62.61	34.52	-61.67	0.10	1395769.66	3186944.89	40.417847	-104.828585
	1090.00	6.15	302.13	1085.96	70.77	39.79	-69.68	0.30	1395774.87	3186936.84	40.417861	-104.828614
	1180.00	6.84	294.81	1175.38	79.85	44.60	-78.63	1.20	1395779.62	3186927.85	40.417874	-104.828646
	1270.00	6.80	294.30	1264.75	89.69	49.04	-88.35	0.08	1395783.98	3186918.10	40.417887	-104.828681
	1360.00	6.62	296.93	1354.13	99.30	53.58	-97.83	0.40	1395788.45	3186908.58	40.417899	-104.828715
	1450.00	6.33	295.06	1443.56	108.54	58.04	-106.95	0.40	1395792.83	3186899.43	40.417911	-104.828748
	1540.00	6.33	293.71	1533.01	117.69	62.13	-115.99	0.17	1395796.86	3186890.36	40.417923	-104.828781
	1630.00	6.39	297.36	1622.45	126.79	66.43	-124.98	0.45	1395801.09	3186881.34	40.417934	-104.828813
	1720.00	5.87	302.64	1711.94	135.25	71.21	-133.30	0.85	1395805.81	3186872.98	40.417947	-104.828843
Last IFR Survey	1750.00	5.79	303.12	1741.79	137.85	72.87	-135.86	0.31	1395807.45	3186870.41	40.417952	-104.828852
9 5/8" Casing	1801.00	5.50	302.25	1792.54	142.15	75.58	-140.08	0.59	1395810.12	3186866.17	40.417959	-104.828867
Begin												
SLB_MWD	1872.00	5.10	300.87	1863.23	147.83	79.01	-145.67	0.59	1395813.52	3186860.55	40.417969	-104.828887
Survey												
	1968.00	6.87	300.80	1958.71	156.57	84.14	-154.26	1.84	1395818.58	3186851.92	40.417983	-104.828918
	2060.00	10.31	299.34	2049.66	168.66	91.00	-166.17	3.75	1395825.34	3186839.96	40.418002	-104.828961
	2155.00	10.09	301.68	2143.16	183.39	99.53	-180.66	0.49	1395833.77	3186825.41	40.418025	-104.829013
	2251.00	9.84	306.06	2237.71	197.43	108.78	-194.45	0.83	1395842.91	3186811.55	40.418051	-104.829062
	2346.00	9.73	305.17	2331.33	210.81	118.18	-207.57	0.20	1395852.21	3186798.36	40.418076	-104.829109
	2439.00	10.12	303.95	2422.94	224.27	127.27	-220.78	0.48	1395861.20	3186785.09	40.418101	-104.829157
	2534.00	10.80	298.13	2516.39	239.14	136.05	-235.41	1.21	1395869.87	3186770.39	40.418125	-104.829209
	2627.00	11.25	292.57	2607.71	255.26	143.56	-251.33	1.33	1395877.26	3186754.41	40.418146	-104.829267
	2723.00	11.30	304.90	2701.87	271.87	152.54	-267.69	2.51	1395886.12	3186737.98	40.418171	-104.829325
	2818.00	10.23	302.44	2795.20	286.90	162.39	-282.44	1.23	1395895.85	3186723.16	40.418198	-104.829378
	2913.00	9.99	306.37	2888.72	300.91	171.80	-296.20	0.77	1395905.16	3186709.33	40.418224	-104.829428
	3007.00	10.82	307.71	2981.18	314.74	182.04	-309.74	0.92	1395915.29	3186695.71	40.418252	-104.829476
	3100.00	10.37	300.89	3072.60	329.09	191.67	-323.83	1.43	1395924.82	3186681.55	40.418278	-104.829527
	3193.00	9.79	304.62	3164.16	343.02	200.46	-337.52	0.94	1395933.50	3186667.79	40.418302	-104.829576
	3287.00	10.51	310.06	3256.69	356.44	210.52	-350.66	1.27	1395943.46	3186654.58	40.418330	-104.829623
	3379.00	10.95	307.02	3347.08	370.13	221.18	-364.06	0.78	1395954.02	3186641.10	40.418359	-104.829671
	3472.00	10.16	307.50	3438.51	383.98	231.49	-377.62	0.85	1395964.23	3186627.46	40.418387	-104.829720
	3566.00	10.22	305.53	3531.03	397.61	241.39	-390.99	0.38	1395974.02	3186614.03	40.418415	-104.829768
	3660.00	10.76	308.03	3623.46	411.59	251.64	-404.68	0.75	1395984.17	3186600.25	40.418443	-104.829817
	3754.00	10.86	304.53	3715.79	426.09	262.06	-418.89	0.71	1395994.49	3186585.97	40.418471	-104.829866
	3848.00	11.21	308.53	3808.05	440.83	272.78	-433.33	0.90	1396005.09	3186571.44	40.418501	-104.829920
	3941.00	11.05	306.64	3899.30	455.35	283.73	-447.56	0.43	1396015.93	3186557.14	40.418531	-104.829971
	4034.00	10.77	309.09	3990.62	469.55	294.52	-461.45	0.58	1396026.62	3186543.16	40.418560	-104.830021
	4127.00	10.12	307.02	4082.08	483.10	304.92	-474.72	0.81	1396036.92	3186529.81	40.418589	-104.830069
	4220.00	10.84	310.02	4173.53	496.61	315.46	-487.94	0.97	1396047.36	3186516.51	40.418618	-104.830116
	4313.00	10.31	308.51	4264.95	510.12	326.27	-501.15	0.64	1396058.07	3186503.22	40.418648	-104.830164
	4406.00	10.98	307.82	4356.35	523.92	336.88	-514.66	0.73	1396068.57	3186489.64	40.418677	-104.830212
	4500.00	11.02	309.04	4448.62	538.28	348.03	-528.71	0.25	1396079.62	3186475.50	40.418707	-104.830263
	4592.00	10.44	310.01	4539.01	551.79	358.93	-541.92	0.66	1396090.41	3186462.21	40.418737	-104.830310
	4686.00	10.34	305.61	4631.47	565.46	369.32	-555.31	0.85	1396100.70	3186448.75	40.418766	-104.830358
	4779.00	10.52	309.31	4722.94	579.10	379.55	-568.66	0.75	1396110.83	3186435.32	40.418794	-104.830406
	4872.00	10.30	310.96	4814.41	592.25	390.38	-581.51	0.40	1396121.57	3186422.39	40.418824	-104.830452
	4965.00	9.75	305.85	4905.99	605.19	400.45	-594.17	1.12	1396131.53	3186409.65	40.418851	-104.830498
	5058.00	10.70	307.58	4997.51	618.68	410.32	-607.39	1.07	1396141.31	3186396.35	40.418878	-104.830545
	5150.00	10.39	308.61	5087.96	632.22	420.71	-620.65	0.39	1396151.59	3186383.02	40.418907	-104.830593
	5244.00	10.20	306.29	5180.44	645.84	430.92	-633.98	0.49	1396161.71	3186369.61	40.418935	-104.830641
	5337.00	10.89	309.78	5271.87	659.51	441.42	-647.37	1.01	1396172.10	3186356.15	40.418964	-104.830689
	5429.00	10.42	307.19	5362.29	673.11	452.01	-660.67	0.73	1396182.59	3186342.76	40.418993	-104.830737
	5522.00	10.11	304.69	5453.80	686.79	461.74	-674.08	0.58	1396192.21	3186329.28	40.419019	-104.830785
	5616.00	10.36	305.02	5546.30	700.76	471.28	-687.79	0.27	1396201.66	3186315.50	40.419046	-104.830834
	5708.00	9.89	302.68	5636.87	714.43	480.30	-701.22	0.68	1396210.57	3186302.01	40.419070	-104.830882
	5802.00	10.48	305.29	5729.39	728.46	489.60	-714.99	0.80	1396219.76	3186288.16	40.419096	-104.830932
	5894.00	10.32	304.26	5819.88	742.36	499.07	-728.63	0.27	1396229.13	3186274.45	40.419122	-104.830981
	5988.00	10.38	303.19	5912.35	756.67	508.44	-742.67	0.21	1396238.40	3186260.34	40.419148	-104.831031
	6082.00	5.63	298.23	6005.41	768.01	515.26	-753.83	5.10	1396245.13	3186249.13	40.419166	-104.831071
	6175.00	2.37	297.49	6098.17	773.82	518.31	-759.56	3.51	1396248.13	3186243.38	40.419175	-104.831092
	6267.00	0.33	325.03	6190.14	775.69	519.41	-761.40	2.26	1396249.22	3186241.53	40.419178	-104.831098
	6362.00	0.16	314.37	6285.14	775.95	519.72	-761.65	0.18	1396249.53	3186241.28	40.419179	-104.831099
	6454.00	0.20	156.82	6377.14	775.98	519.67	-761.68	0.38	1396249.47	3186241.25	40.419178	-104.831099
	6548.00	7.07	277.00	6470.90	781.67	520.22	-767.36	7.63	1396249.99	3186235.56	40.419180	-104.831120
	6642.00	15.44	268.46	6563.02	799.96	520.59	-785.64	9.06	1396250.22	3186217.28	40.419181	-104.831186

Comments	MD (ft)	Incl (°)	Azim True (°)	TVD (ft)	VSEC (ft)	NS (ft)	EW (ft)	DLS (°/100ft)	Northing (ftUS)	Easting (ftUS)	Latitude (°)	Longitude (°)
	6735.00	21.84	261.55	6651.10	829.39	517.71	-815.16	7.27	1396247.11	3186187.78	40.419173	-104.831292
	6828.00	27.85	262.79	6735.46	867.92	512.44	-853.86	6.49	1396241.55	3186149.13	40.419159	-104.831431
	6922.00	35.72	265.51	6815.30	916.98	507.53	-903.08	8.51	1396236.26	3186099.95	40.419145	-104.831607
	7015.00	41.23	263.44	6888.09	974.36	501.90	-960.64	6.08	1396230.20	3186042.44	40.419130	-104.831814
	7109.00	47.85	262.85	6955.05	1039.54	494.01	-1026.06	7.06	1396221.82	3185977.08	40.419108	-104.832049
	7203.00	54.52	262.42	7013.94	1111.84	484.61	-1098.66	7.10	1396211.87	3185904.56	40.419082	-104.832310
	7297.00	64.91	265.07	7061.28	1192.14	475.88	-1179.23	11.32	1396202.53	3185824.06	40.419058	-104.832599
	7390.00	70.18	266.01	7096.79	1277.58	469.21	-1264.89	5.74	1396195.21	3185738.45	40.419040	-104.832907
	7483.00	77.47	268.48	7122.69	1366.57	464.96	-1354.04	8.24	1396190.29	3185649.34	40.419028	-104.833227
	7576.00	84.38	268.82	7137.34	1458.23	462.80	-1445.80	7.44	1396187.43	3185557.61	40.419022	-104.833556
	7669.00	90.17	269.49	7141.76	1551.00	461.43	-1538.64	6.27	1396185.36	3185464.78	40.419018	-104.833890
	7761.00	89.58	266.71	7141.97	1642.81	458.38	-1630.58	3.09	1396181.61	3185372.87	40.419010	-104.834220
	7854.00	89.60	266.58	7142.63	1735.46	452.94	-1723.42	0.14	1396175.47	3185280.08	40.418995	-104.834553
	7947.00	89.67	265.90	7143.22	1828.05	446.84	-1816.22	0.74	1396168.67	3185187.34	40.418978	-104.834887
	8041.00	90.29	266.68	7143.26	1921.65	440.76	-1910.02	1.06	1396161.88	3185093.59	40.418962	-104.835224
	8134.00	90.16	266.23	7142.89	2014.27	435.01	-2002.84	0.50	1396155.42	3185000.82	40.418946	-104.835557
	8226.00	90.21	266.36	7142.59	2105.87	429.06	-2094.65	0.15	1396148.78	3184909.06	40.418929	-104.835887
	8318.00	90.65	267.32	7141.90	2197.55	423.99	-2186.50	1.15	1396143.02	3184817.25	40.418916	-104.836217
	8411.00	90.69	267.32	7140.82	2290.28	419.64	-2279.39	0.04	1396137.96	3184724.40	40.418904	-104.836550
	8506.00	89.99	265.68	7140.25	2384.90	413.85	-2374.21	1.88	1396131.45	3184629.63	40.418888	-104.836891
	8599.00	90.19	266.18	7140.11	2477.44	407.24	-2466.98	0.58	1396124.14	3184536.92	40.418870	-104.837224
	8692.00	90.00	265.05	7139.95	2569.93	400.13	-2559.70	1.23	1396116.33	3184444.26	40.418850	-104.837557
	8785.00	90.29	266.66	7139.72	2662.46	393.41	-2652.46	1.76	1396108.91	3184351.56	40.418831	-104.837890
	8877.00	89.97	265.94	7139.51	2754.07	387.48	-2744.26	0.86	1396102.28	3184259.80	40.418815	-104.838220
	8971.00	89.72	266.93	7139.76	2847.68	381.63	-2838.08	1.09	1396095.72	3184166.04	40.418799	-104.838557
	9064.00	90.13	266.31	7139.88	2940.33	376.15	-2930.92	0.80	1396089.54	3184073.25	40.418784	-104.838890
	9157.00	89.76	265.43	7139.97	3032.86	369.45	-3023.67	1.03	1396082.14	3183980.55	40.418766	-104.839223
	9252.00	90.32	268.57	7139.91	3127.54	364.48	-3118.53	3.36	1396076.45	3183885.74	40.418752	-104.839564
	9345.00	90.63	269.97	7139.14	3220.46	363.29	-3211.52	1.54	1396074.56	3183792.76	40.418749	-104.839898
	9437.00	90.41	269.63	7138.30	3312.41	362.97	-3303.51	0.44	1396073.54	3183700.78	40.418748	-104.840228
	9531.00	90.53	269.83	7137.53	3406.35	362.53	-3397.51	0.25	1396072.39	3183606.79	40.418746	-104.840566
	9624.00	89.86	268.49	7137.21	3499.27	361.17	-3490.50	1.61	1396070.32	3183513.82	40.418743	-104.840900
	9717.00	90.06	268.81	7137.28	3592.14	358.98	-3583.47	0.41	1396067.42	3183420.87	40.418737	-104.841234
	9809.00	90.03	268.72	7137.21	3684.03	356.99	-3675.45	0.10	1396064.74	3183328.91	40.418731	-104.841564
	9902.00	90.32	269.30	7136.92	3776.93	355.39	-3768.43	0.70	1396062.43	3183235.95	40.418727	-104.841898
	9995.00	90.38	269.87	7136.35	3869.87	354.71	-3861.43	0.62	1396061.05	3183142.96	40.418725	-104.842232
	10088.00	90.34	269.20	7135.77	3962.81	353.96	-3954.42	0.72	1396059.60	3183049.98	40.418723	-104.842566
	10181.00	90.14	268.84	7135.38	4055.71	352.37	-4047.41	0.44	1396057.30	3182957.01	40.418718	-104.842900
	10275.00	90.12	269.10	7135.17	4149.61	350.68	-4141.39	0.28	1396054.90	3182863.05	40.418714	-104.843237
	10367.00	90.54	269.75	7134.64	4241.54	349.75	-4233.39	0.84	1396053.28	3182771.07	40.418711	-104.843568
	10459.00	90.69	269.95	7133.65	4333.49	349.51	-4325.38	0.27	1396052.34	3182679.08	40.418710	-104.843898
	10552.00	90.49	271.36	7132.69	4426.47	350.58	-4418.37	1.53	1396052.70	3182586.10	40.418713	-104.844232
	10645.00	90.25	269.86	7132.09	4519.45	351.57	-4511.36	1.63	1396052.99	3182493.10	40.418716	-104.844566
	10738.00	90.40	270.54	7131.56	4612.42	351.89	-4604.36	0.75	1396052.61	3182400.11	40.418717	-104.844900
	10830.00	90.03	270.25	7131.22	4704.40	352.52	-4696.35	0.51	1396052.54	3182308.12	40.418718	-104.845230
	10923.00	89.93	270.87	7131.25	4797.39	353.43	-4789.35	0.68	1396052.75	3182215.12	40.418721	-104.845564
	11017.00	90.93	270.19	7130.54	4891.37	354.30	-4883.34	1.29	1396052.91	3182121.13	40.418723	-104.845890
	11109.00	90.61	269.71	7129.31	4983.32	354.22	-4975.33	0.63	1396052.13	3182029.14	40.418723	-104.846232
	11202.00	91.19	271.11	7127.85	5076.28	354.89	-5068.31	1.63	1396052.09	3181936.16	40.418725	-104.846566
	11295.00	89.79	271.03	7127.05	5169.27	356.62	-5161.29	1.51	1396053.12	3181843.18	40.418729	-104.846900
	11388.00	87.96	270.38	7128.88	5262.24	357.77	-5254.26	2.09	1396053.56	3181750.20	40.418733	-104.847234
	11481.00	87.43	270.33	7132.62	5355.14	358.34	-5347.19	0.57	1396053.43	3181657.28	40.418734	-104.847568
	11574.00	87.21	270.24	7136.97	5448.02	358.81	-5440.08	0.26	1396053.19	3181564.39	40.418735	-104.847901
	11669.00	88.36	270.71	7140.64	5542.92	359.59	-5535.01	1.31	1396053.26	3181469.47	40.418737	-104.848242
	11763.00	88.47	270.73	7143.24	5636.88	360.77	-5628.96	0.12	1396053.73	3181375.51	40.418741	-104.848580
	11856.00	88.12	269.15	7146.01	5729.79	360.68	-5721.92	1.74	1396052.93	3181282.56	40.418740	-104.848914
	11948.00	87.61	269.50	7149.43	5821.66	359.59	-5813.85	0.67	1396051.15	3181190.64	40.418737	-104.849244
	12042.00	87.94	270.16	7153.08	5915.54	359.32	-5907.78	0.78	1396050.16	3181096.73	40.418736	-104.849581
	12136.00	89.23	269.57	7155.40	6009.46	359.09	-6001.74	1.51	1396049.23	3181002.76	40.418736	-104.849919
	12229.00	90.06	270.53	7155.98	6102.43	359.18	-6094.74	1.36	1396048.60	3180909.77	40.418736	-104.850253
	12323.00	90.25	270.57	7155.73	6196.41	360.08	-6188.74	0.21	1396048.79	3180815.78	40.418738	-104.850590
	12417.00	90.06	269.81	7155.47	6290.38	360.39	-6282.73	0.83	1396048.39	3180721.78	40.418739	-104.850928
	12511.00	89.91	268.88	7155.50	6384.31	359.31	-6376.73	1.00	1396046.61	3180627.81	40.418736	-104.851265
	12604.00	89.82	269.00	7155.72	6477.20	357.59	-6469.71	0.16	1396044.18	3180534.84	40.418731	-104.851599
	12697.00	90.21	268.72	7155.69	6570.10	355.74	-6562.69	0.52	1396041.63	3180441.88	40.418726	-104.851933
	12791.00	90.11	269.29	7155.43	6664.00	354.11	-6656.68	0.62	1396039.28	3180347.92	40.418722	-104.852271
	12884.00	90.65	269.38	7154.81	6756.92	353.03	-6749.67	0.59	1396037.50	3180254.94	40.418719	-104.852605
	12977.00	90.55	269.15	7153.84	6849.84	351.84	-6842.66	0.27	1396035.60	3180161.97	40.418715	-104.852939
	13070.00	90.40	268.30	7153.07	6942.72	349.77	-6935.63	0.93	1396032.83	3180069.02	40.418709	-104.853272
	13166.00	90.57	269.18	7152.25	7038.59	347.66	-7031.60	0.93	1396029.99	3179973.07	40.418704	-104.853617
	13259.00	90.64	269.42	7151.27	7131.51	346.52	-7124.59	0.27	1396028.15	3179880.09	40.418700	-104.853951
	13351.00	90.51	268.42	7150.35	7223.41	344.79	-7216.57	1.10	1396025.72	3179788.14	40.418696	-104.854281
	13444.00	90.07	269.16	7149.88	7316.29	342.83	-7309.54	0.93	1396023.05	3179695.18	40.418690	-104.854615
	13537.00	89.74	268.80	7150.03	7409.19	341.17	-7402.53	0.53	1396020.69	3179602.21	40.418685	-104.854949
	13629.00	89.67	268.74	7150.51	7501.08	339.19	-7494.51	0.10	1396018.02	3179510.26	40.418680	-104.855280
	13722.00	90.99	268.95	7149.97	7593.97	337.32	-7587.48	1.44	1396015.44	3179417.30	40.418675	-104.855613
	13815.00	90.91	269.31	7148.43	7686.87	335.91	-7680.46	0.40	1396013.33	3179324.34	40.418671	-104.855947
	13909.00	91.35	268.78	7146.57	7780.75	334.34	-7774.43	0.7				

Comments	MD (ft)	Incl (°)	Azim True (°)	TVD (ft)	VSEC (ft)	NS (ft)	EW (ft)	DLS (°/100ft)	Northing (ftUS)	Easting (ftUS)	Latitude (°)	Longitude (°)
	16880.00	90.10	268.51	7118.85	10749.77	323.08	-10744.93	0.27	1395977.29	3176260.18	40.418632	-104.866953
	16972.00	90.12	268.72	7118.68	10841.64	320.86	-10836.91	0.23	1395974.37	3176168.23	40.418626	-104.867283
	17064.00	90.35	269.37	7118.30	10933.55	319.33	-10928.89	0.75	1395972.14	3176076.26	40.418622	-104.867614
	17159.00	89.99	269.10	7118.02	11028.47	318.06	-11023.88	0.47	1395970.16	3175981.29	40.418618	-104.867955
Last SLB_MWD Survey	17173.00	89.56	268.47	7118.07	11042.45	317.76	-11037.88	5.45	1395969.75	3175967.29	40.418617	-104.868005
Projection to Bit	17195.00	89.56	268.47	7118.24	11064.42	317.17	-11059.87	0.00	1395969.00	3175945.31	40.418616	-104.868084

Survey Type: Def Survey

Survey Error Model: ISCWSA Rev 0 *** 3-D 95.000% Confidence 2.7955 sigma
Survey Program:

Description	Part	MD From (ft)	MD To (ft)	EOU Freq (ft)	Hole Size	Casing Diameter (in)	Survey Tool Type	Borehole / Survey
	1	0.000	20.000	1/98.425	13.500	9.625	NAL_MWD_IFR1-Depth Only	Original Hole / Bost Farm 4C-11-L2 IFR 0' to 17195' Definitive
	1	20.000	20.000	Act Stns	13.500	9.625	NAL_MWD_IFR1-Depth Only	Original Hole / Bost Farm 4C-11-L2 IFR 0' to 17195' Definitive
	1	20.000	1801.000	Act Stns	13.500	9.625	NAL_MWD_IFR1	Original Hole / Bost Farm 4C-11-L2 IFR 0' to 17195' Definitive
	1	1801.000	17195.000	Act Stns	8.500	5.500	NAL_MWD_IFR1+MS	Original Hole / Bost Farm 4C-11-L2 IFR 0' to 17195' Definitive

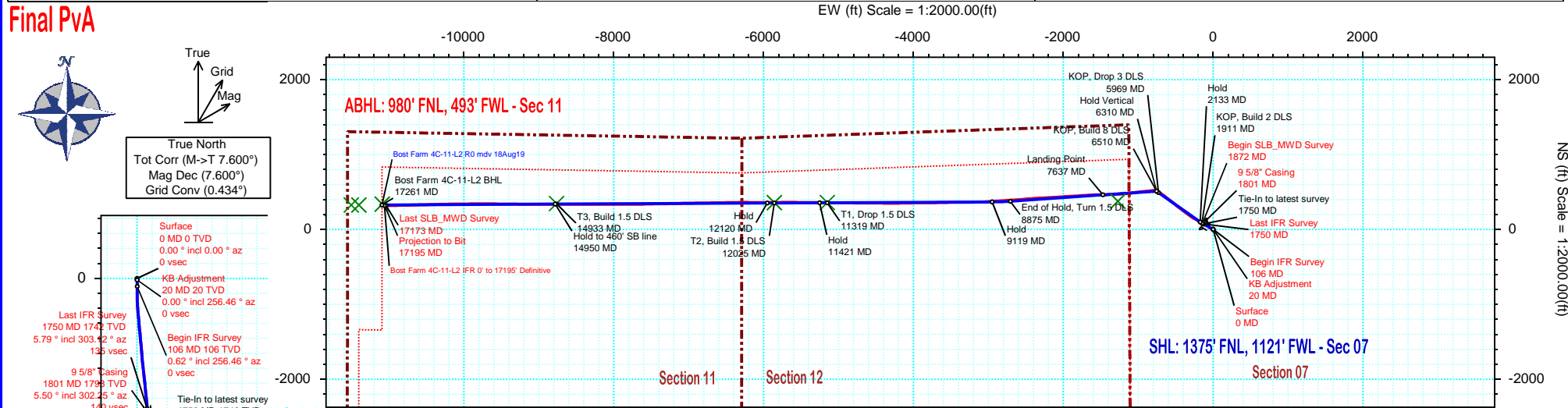


SRC Energy

Schlumberger

Borehole:	Well:	Field:	Structure:
Original Hole	Bost Farm 4C-11-L2	CO, Weld County (NAD 83 NZ) - SRC	SRC Energy 07-05N-66W (Bost Farm 5-7 Pad DSU 22)

Gravity & Magnetic Parameters				Surface Location				Miscellaneous			
Model:	Magvar IFR	Dip:	66.61°	Date:	18-Aug-2019	Lat:	N 40 25 3.91	Northing:	1395735.61ftUS	Grid Conv:	0.434°
MagDec:	7.6°	FS:	52238NT	Gravity FS:	999.025mgn (9.80665 Based)	Lon:	W 104 49 42.11	Easting:	3187006.81ftUS	Scale Fact:	0.99996108
								Slot: Bost Farm 4C-11-L2			
								Plan: Bost Farm 4C-11-L2 IFR 0' to 17195' Definitive			



Northing: 1395735.61286688		Easting: 3187006.81127309		Latitude: N 40 25 3.91		Longitude: W 104 49 42.11		VSec Azimuth: 271.61	
Target Description		Grid Coord		Surface Location		Local Coord			
Target Name	Latitude	Longitude	Northing	Easting	TVD	VSec	N(+)S(-)	E(+)W(-)	DLS
Bost Farm 5-7 Pad DSU 22 - Sec 12-11	N 40 24 50.94	W 104 49 41.85	1394423.60	3187036.52	4898.00	-56.63	-1312.26	19.77	
Bost Farm 5-7 Pad DSU 22 - Sec 12-11 - CL	N 40 24 50.94	W 104 49 41.85	1394423.60	3187036.52	4898.00	-56.63	-1312.26	19.77	
Bost Farm 5-7 Pad DSU 22 - Sec 12-11 - HL	N 40 25 2.72	W 104 49 42.12	1395615.75	3187006.61	4898.00	-2.25	-119.86	-1.11	
Bost Farm 4C-11-L2 - T1	N 40 25 7.45	W 104 50 48.71	14679255.05	1683039.69	7142.50	5159.05	359.44	-5150.99	
Bost Farm 4C-11-L2 BHL	N 40 25 7.08	W 104 52 10.83	1395972.47	3175502.03	7146.10	11507.69	324.00	-11503.13	
Bost Farm 4C-11-L2 - T4	N 40 25 7.21	W 104 52 5.49	14679220.51	1677103.32	7146.10	11094.87	336.41	-11089.79	
Bost Farm 4C-11-L2 TOP	N 40 25 7.61	W 104 49 58.56	1396100.86	3185731.57	7152.00	1282.52	374.91	-1272.49	
Bost Farm 4C-11-L2 - T3	N 40 25 7.31	W 104 51 35.43	14679234.03	1679427.02	7157.70	8771.38	345.42	-8765.14	
Bost Farm 4C-11-L2 - T2	N 40 25 7.43	W 104 50 57.84	14679250.94	1682333.40	7158.20	5865.28	356.70	-5857.57	
Bost Farm 4C-11-L2 BPZ	N 40 25 7.09	W 104 52 9.54	1395973.55	3175602.26	7181.00	11407.50	324.32	-11402.89	

Critical Points									
Critical Point	MD	INCL	AZIM	TVD	VSEC	N(+)S(-)	E(+)W(-)	DLS	
Surface	0.00	0.00	0.00	0.00	0.00	0.00	0.00		
KB Adjustment	20.00	0.00	256.46	20.00	0.00	0.00	0.00	0.00	
Begin IFR Survey	106.00	0.62	256.46	106.00	0.45	-0.11	-0.45	0.72	
Last IFR Survey	1750.00	5.79	303.12	1741.79	137.85	72.87	-135.86	0.31	
9 5/8" Casing	1801.00	5.50	302.25	1792.54	142.15	75.58	-140.08	0.59	
Begin SLB_MWD Survey	1872.00	5.10	300.87	1863.23	147.83	79.01	-145.67	0.59	
Last SLB_MWD Survey	17173.00	89.56	268.47	7118.07	11042.45	317.76	-11037.88	5.45	
Projection to Bit	17195.00	89.56	268.47	7118.24	11064.42	317.17	-11059.87	0.00	

Vertical Section (ft) Azim = 269.67° Scale = 1:2000.00(ft) Origin = 0N/-S, 0E/-W