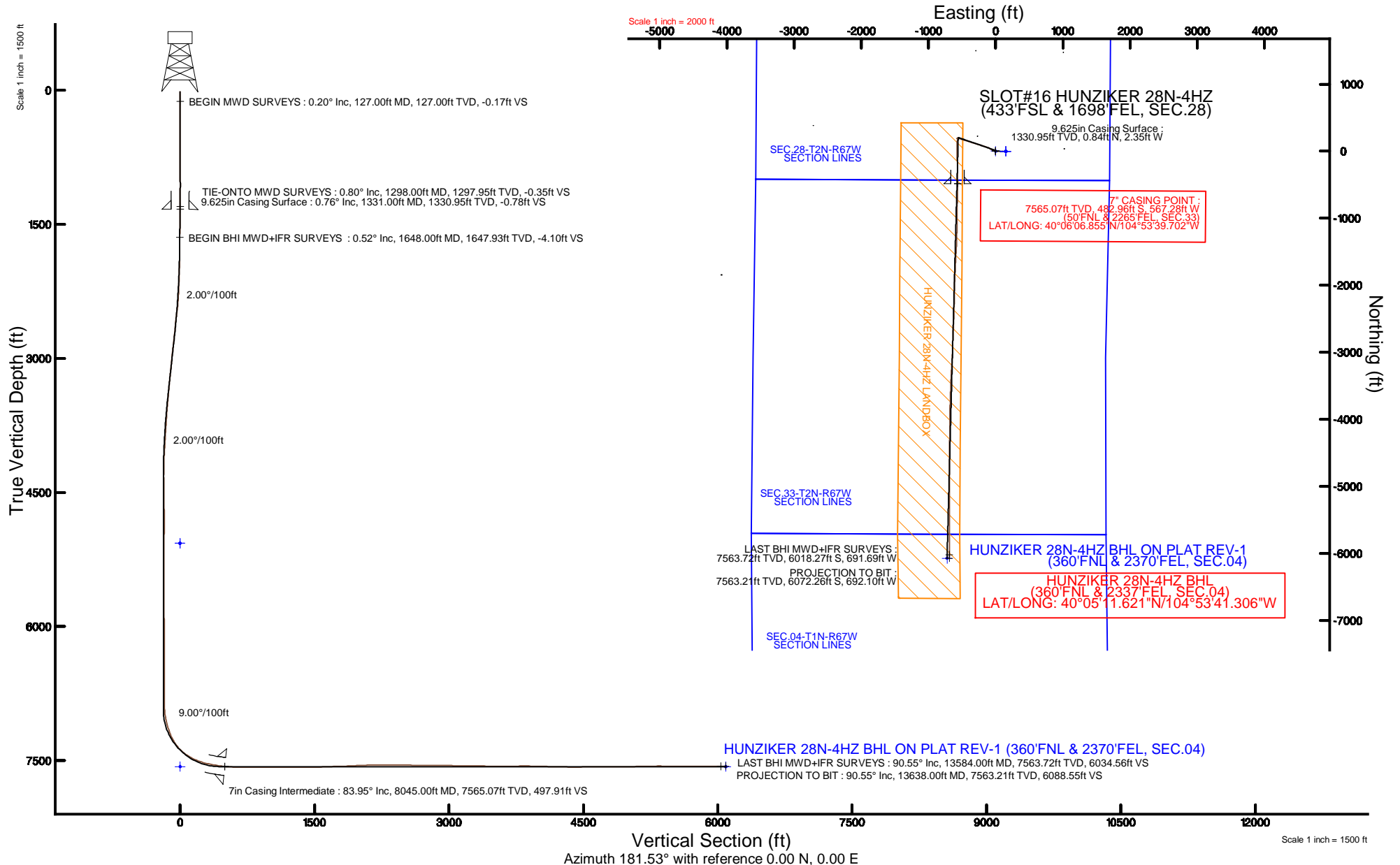


KERR-MCGEE OIL & GAS ONSHORE LP (WA)

Location: COLORADO Slot: SLOT#16 HUNZIKER 28N-4HZ (433'FSL & 1698'FEL, SEC.28)
 Field: WELD COUNTY (UTM/TRUE NORTH) Well: HUNZIKER 28N-4HZ
 Facility: SEC.28-T2N-R67W Wellbore: HUNZIKER 28N-4HZ PWB

Plot reference wellpath is HUNZIKER 28N-4HZ (REV-B.0) PWP

True vertical depths are referenced to PRECISION 460 (RKB)	Grid System: NAD83 / UTM Zone 13 North, US feet
Measured depths are referenced to PRECISION 460 (RKB)	North Reference: True north
PRECISION 460 (RKB) to Mean Sea Level: 5069 feet	Scale: True distance
Mean Sea Level to Mud line (At Slot: SLOT#16 HUNZIKER 28N-4HZ (433'FSL & 1698'FEL, SEC.28)): 0 feet	Depths are in feet
Coordinates are in feet referenced to Slot	Created by: amarc on 05/Jun/2015





Actual Wellpath Report

HUNZIKER 28N-4HZ AWP

Page 1 of 6



REFERENCE WELLPATH IDENTIFICATION

Operator	KERR-MCGEE OIL & GAS ONSHORE LP (WA)	Slot	SLOT#16 HUNZIKER 28N-4HZ (433'FSL & 1698'FEL, SEC.28)
Area	COLORADO	Well	HUNZIKER 28N-4HZ
Field	WELD COUNTY (UTM/TRUE NORTH)	Wellbore	HUNZIKER 28N-4HZ AWB <13638>
Facility	SEC.28-T2N-R67W		

REPORT SETUP INFORMATION

Projection System	NAD83 / UTM Zone 13 North, US feet	Software System	WellArchitect® 4.0.0
North Reference	True	User	Amarcar
Scale	0.999601	Report Generated	05/Jun/2015 at 13:58
Convergence at slot	0.07° East	Database/Source file	KERR MCGEE UTM/ HUNZIKER 28N-4HZ AWB 13638 .xml

WELLPATH LOCATION

	Local coordinates		Grid coordinates		Geographic coordinates	
	North[ft]	East[ft]	Easting[US ft]	Northing[US ft]	Latitude	Longitude
Slot Location	-4193.00	-1050.12	1670523.21	14564342.25	40°06'11.628"N	104°53'32.402"W
Facility Reference Pt			1671567.66	14568534.88	40°06'53.064"N	104°53'18.888"W
Field Reference Pt			1698235.31	14552047.82	40°04'09.600"N	104°47'36.000"W

WELLPATH DATUM

Calculation method	Minimum curvature	PRECISION 460 (RKB) to Facility Vertical Datum	5069.00ft
Horizontal Reference Pt	Slot	PRECISION 460 (RKB) to Mean Sea Level	5069.00ft
Vertical Reference Pt	PRECISION 460 (RKB)	PRECISION 460 (RKB) to Mud Line at Slot (SLOT#16 HUNZIKER 28N-4HZ (433'FSL & 1698'FEL, SEC.28))	5069.00ft
MD Reference Pt	PRECISION 460 (RKB)	Section Origin	N 0.00, E 0.00 ft
Field Vertical Reference	Mean Sea Level	Section Azimuth	181.53°

REFERENCE WELLPATH IDENTIFICATION			
Operator	KERR-MCGEE OIL & GAS ONSHORE LP (WA)	Slot	SLOT#16 HUNZIKER 28N-4HZ (433'FSL & 1698'FEL, SEC.28)
Area	COLORADO	Well	HUNZIKER 28N-4HZ
Field	WELD COUNTY (UTM/TRUE NORTH)	Wellbore	HUNZIKER 28N-4HZ AWB <13638>
Facility	SEC.28-T2N-R67W		

WELLPATH DATA (112 stations) † = interpolated/extrapolated station										
MD [ft]	Inclination [°]	Azimuth [°]	TVD [ft]	Vert Sect [ft]	North [ft]	East [ft]	Latitude	Longitude	DLS [°/100ft]	Comments
0.00†	0.000	338.900	0.00	0.00	0.00	0.00	40°06'11.628"N	104°53'32.402"W	0.00	
20.00	0.000	338.900	20.00	0.00	0.00	0.00	40°06'11.628"N	104°53'32.402"W	0.00	
127.00	0.200	338.900	127.00	-0.17	0.17	-0.07	40°06'11.630"N	104°53'32.403"W	0.19	BEGIN MWD SURVEYS
213.00	0.500	350.800	213.00	-0.68	0.68	-0.18	40°06'11.635"N	104°53'32.404"W	0.36	
302.00	0.500	350.500	301.99	-1.44	1.45	-0.31	40°06'11.642"N	104°53'32.406"W	0.00	
390.00	0.600	341.900	389.99	-2.25	2.27	-0.51	40°06'11.650"N	104°53'32.409"W	0.15	
479.00	0.500	343.200	478.99	-3.06	3.08	-0.77	40°06'11.658"N	104°53'32.412"W	0.11	
576.00	0.300	163.100	575.99	-3.22	3.24	-0.82	40°06'11.660"N	104°53'32.413"W	0.82	
671.00	0.700	180.300	670.98	-2.41	2.43	-0.75	40°06'11.652"N	104°53'32.412"W	0.45	
765.00	0.900	181.500	764.97	-1.09	1.11	-0.77	40°06'11.639"N	104°53'32.412"W	0.21	
861.00	0.500	200.700	860.97	0.06	-0.03	-0.94	40°06'11.628"N	104°53'32.414"W	0.48	
957.00	0.500	186.900	956.96	0.87	-0.84	-1.14	40°06'11.620"N	104°53'32.417"W	0.13	
1050.00	0.200	272.600	1049.96	1.27	-1.23	-1.35	40°06'11.616"N	104°53'32.419"W	0.56	
1146.00	0.300	314.500	1145.96	1.10	-1.05	-1.70	40°06'11.618"N	104°53'32.424"W	0.21	
1239.00	0.700	347.400	1238.96	0.38	-0.33	-1.99	40°06'11.625"N	104°53'32.428"W	0.51	
1298.00	0.800	340.200	1297.95	-0.35	0.41	-2.21	40°06'11.632"N	104°53'32.430"W	0.23	TIE-ONTO MWD SURVEYS
1648.00	0.520	23.900	1647.93	-4.10	4.16	-2.40	40°06'11.669"N	104°53'32.433"W	0.16	BEGIN BHI MWD+IFR SURVEYS
1738.00	0.430	45.590	1737.93	-4.72	4.77	-1.99	40°06'11.675"N	104°53'32.428"W	0.22	
1828.00	1.700	310.050	1827.91	-5.79	5.87	-2.77	40°06'11.686"N	104°53'32.438"W	1.99	
1917.00	3.120	281.920	1916.83	-7.05	7.22	-6.15	40°06'11.699"N	104°53'32.481"W	2.03	
2007.00	5.240	297.250	2006.59	-9.28	9.61	-12.20	40°06'11.723"N	104°53'32.559"W	2.64	
2097.00	7.130	284.260	2096.07	-12.29	12.87	-21.27	40°06'11.755"N	104°53'32.676"W	2.60	
2187.00	8.280	284.210	2185.25	-14.95	15.83	-32.97	40°06'11.784"N	104°53'32.826"W	1.28	
2277.00	9.730	287.510	2274.14	-18.47	19.71	-46.50	40°06'11.823"N	104°53'33.000"W	1.71	
2367.00	11.500	293.060	2362.60	-23.85	25.51	-62.01	40°06'11.880"N	104°53'33.200"W	2.27	
2457.00	13.970	304.620	2450.40	-33.08	35.20	-79.21	40°06'11.976"N	104°53'33.421"W	3.93	
2547.00	15.730	294.140	2537.40	-43.71	46.37	-99.29	40°06'12.086"N	104°53'33.680"W	3.56	
2636.00	16.580	290.250	2622.89	-52.42	55.70	-122.21	40°06'12.178"N	104°53'33.975"W	1.55	
2726.00	19.030	289.490	2708.57	-61.07	65.04	-148.10	40°06'12.271"N	104°53'34.308"W	2.73	
2816.00	20.980	287.220	2793.14	-69.95	74.70	-177.32	40°06'12.366"N	104°53'34.684"W	2.33	
2906.00	21.420	289.070	2877.05	-79.26	84.84	-208.24	40°06'12.466"N	104°53'35.082"W	0.89	
2996.00	21.040	287.580	2960.94	-88.69	95.09	-239.18	40°06'12.568"N	104°53'35.480"W	0.73	
3086.00	20.270	286.980	3045.16	-97.31	104.53	-269.49	40°06'12.661"N	104°53'35.870"W	0.89	
3266.00	20.250	286.970	3214.02	-113.91	122.72	-329.10	40°06'12.841"N	104°53'36.637"W	0.01	
3355.00	19.840	287.160	3297.63	-122.08	131.68	-358.27	40°06'12.929"N	104°53'37.013"W	0.47	
3445.00	18.940	287.150	3382.52	-130.13	140.49	-386.82	40°06'13.016"N	104°53'37.380"W	1.00	
3535.00	16.230	288.240	3468.31	-137.68	148.73	-412.72	40°06'13.098"N	104°53'37.713"W	3.03	
3625.00	15.000	288.110	3554.99	-144.62	156.29	-435.74	40°06'13.172"N	104°53'38.010"W	1.37	
3715.00	14.060	287.220	3642.11	-150.90	163.15	-457.25	40°06'13.240"N	104°53'38.286"W	1.07	
3805.00	13.180	286.560	3729.57	-156.52	169.31	-477.53	40°06'13.301"N	104°53'38.547"W	0.99	
3895.00	12.410	288.660	3817.34	-162.03	175.33	-496.53	40°06'13.361"N	104°53'38.792"W	1.00	
3984.00	10.320	291.490	3904.59	-167.57	181.31	-513.01	40°06'13.420"N	104°53'39.004"W	2.43	
4074.00	9.800	290.420	3993.21	-172.81	186.93	-527.69	40°06'13.475"N	104°53'39.193"W	0.61	
4164.00	7.190	299.370	4082.22	-177.92	192.37	-539.78	40°06'13.529"N	104°53'39.348"W	3.24	
4254.00	6.080	281.540	4171.62	-181.38	196.09	-549.36	40°06'13.566"N	104°53'39.472"W	2.59	

Actual Wellpath Report

HUNZIKER 28N-4HZ AWP
Page 3 of 6

REFERENCE WELLPATH IDENTIFICATION			
Operator	KERR-MCGEE OIL & GAS ONSHORE LP (WA)	Slot	SLOT#16 HUNZIKER 28N-4HZ (433'FSL & 1698'FEL, SEC.28)
Area	COLORADO	Well	HUNZIKER 28N-4HZ
Field	WELD COUNTY (UTM/TRUE NORTH)	Wellbore	HUNZIKER 28N-4HZ AWB <13638>
Facility	SEC.28-T2N-R67W		

WELLPATH DATA (112 stations) † = interpolated/extrapolated station										
MD [ft]	Inclination [°]	Azimuth [°]	TVD [ft]	Vert Sect [ft]	North [ft]	East [ft]	Latitude	Longitude	DLS [°/100ft]	Comments
4344.00	3.320	289.830	4261.31	-183.02	197.92	-556.48	40°06'13.584"N	104°53'39.563"W	3.15	
4434.00	1.600	240.910	4351.23	-183.20	198.20	-560.03	40°06'13.587"N	104°53'39.609"W	2.85	
4523.00	1.730	254.650	4440.20	-182.18	197.24	-562.41	40°06'13.577"N	104°53'39.640"W	0.47	
4613.00	1.390	239.300	4530.16	-181.20	196.32	-564.66	40°06'13.568"N	104°53'39.669"W	0.60	
4793.00	1.480	216.370	4710.11	-178.13	193.33	-567.91	40°06'13.538"N	104°53'39.711"W	0.32	
4883.00	0.830	305.700	4800.09	-177.54	192.78	-569.13	40°06'13.533"N	104°53'39.726"W	1.88	
4973.00	0.940	290.670	4890.08	-178.15	193.42	-570.35	40°06'13.539"N	104°53'39.742"W	0.28	
5063.00	0.930	285.880	4980.07	-178.58	193.88	-571.75	40°06'13.544"N	104°53'39.760"W	0.09	
5152.00	0.520	52.140	5069.07	-179.01	194.33	-572.12	40°06'13.548"N	104°53'39.765"W	1.47	
5242.00	0.340	60.070	5159.06	-179.41	194.71	-571.57	40°06'13.552"N	104°53'39.758"W	0.21	
5422.00	0.110	85.310	5339.06	-179.71	194.99	-570.93	40°06'13.555"N	104°53'39.749"W	0.14	
5602.00	0.150	299.500	5519.06	-179.84	195.12	-570.97	40°06'13.556"N	104°53'39.750"W	0.14	
5781.00	0.330	218.220	5698.06	-179.53	194.83	-571.49	40°06'13.553"N	104°53'39.757"W	0.19	
5961.00	0.330	177.680	5878.06	-178.60	193.91	-571.79	40°06'13.544"N	104°53'39.760"W	0.13	
6141.00	0.500	182.180	6058.05	-177.30	192.60	-571.80	40°06'13.531"N	104°53'39.761"W	0.10	
6320.00	0.240	243.240	6237.05	-176.34	191.65	-572.16	40°06'13.522"N	104°53'39.765"W	0.24	
6500.00	0.300	306.560	6417.05	-176.43	191.76	-572.88	40°06'13.523"N	104°53'39.774"W	0.16	
6769.00	0.520	137.500	6686.05	-175.96	191.28	-572.62	40°06'13.518"N	104°53'39.771"W	0.30	
6949.00	0.510	100.590	6866.04	-175.24	190.53	-571.28	40°06'13.511"N	104°53'39.754"W	0.18	
7039.00	5.040	186.810	6955.92	-171.24	186.53	-571.35	40°06'13.471"N	104°53'39.755"W	5.59	
7129.00	12.300	177.890	7044.84	-157.72	173.01	-571.47	40°06'13.338"N	104°53'39.756"W	8.18	
7219.00	17.630	185.460	7131.76	-134.54	149.84	-572.41	40°06'13.109"N	104°53'39.768"W	6.30	
7308.00	21.830	179.950	7215.53	-104.53	119.86	-573.68	40°06'12.812"N	104°53'39.785"W	5.16	
7398.00	31.880	180.020	7295.72	-63.94	79.26	-573.68	40°06'12.411"N	104°53'39.785"W	11.17	
7488.00	43.110	182.720	7367.01	-9.26	24.60	-575.15	40°06'11.871"N	104°53'39.804"W	12.61	
7578.00	54.140	179.730	7426.42	58.16	-42.81	-576.44	40°06'11.205"N	104°53'39.820"W	12.50	
7668.00	63.410	176.640	7473.03	134.88	-119.63	-573.91	40°06'10.446"N	104°53'39.788"W	10.71	
7758.00	70.440	177.860	7508.28	217.40	-202.28	-569.96	40°06'09.629"N	104°53'39.737"W	7.91	
7847.00	77.110	179.960	7533.14	302.71	-287.67	-568.36	40°06'08.785"N	104°53'39.716"W	7.83	
7937.00	80.740	179.380	7550.43	390.98	-375.98	-567.85	40°06'07.912"N	104°53'39.710"W	4.08	
8006.00	82.510	179.720	7560.48	459.20	-444.24	-567.31	40°06'07.238"N	104°53'39.703"W	2.61	
8045.00†	83.947	180.170	7565.07	497.91	-482.96	-567.28	40°06'06.855"N	104°53'39.702"W	3.86	7" CASING POINT
8155.00	88.000	181.430	7572.80	607.60	-592.66	-568.81	40°06'05.771"N	104°53'39.722"W	3.86	
8244.00	89.870	181.050	7574.45	696.58	-681.62	-570.74	40°06'04.892"N	104°53'39.747"W	2.14	
8334.00	89.840	180.890	7574.68	786.58	-771.60	-572.26	40°06'04.003"N	104°53'39.766"W	0.18	
8514.00	90.060	181.000	7574.84	966.57	-951.58	-575.23	40°06'02.224"N	104°53'39.804"W	0.14	
8604.00	90.490	180.940	7574.40	1056.56	-1041.56	-576.75	40°06'01.335"N	104°53'39.824"W	0.48	
8694.00	89.870	180.900	7574.12	1146.56	-1131.55	-578.20	40°06'00.446"N	104°53'39.843"W	0.69	
8783.00	89.440	180.120	7574.66	1235.54	-1220.54	-578.99	40°05'59.566"N	104°53'39.853"W	1.00	
8963.00	90.430	183.440	7574.86	1415.51	-1400.43	-584.58	40°05'57.789"N	104°53'39.925"W	1.92	
9143.00	92.430	183.020	7570.37	1595.37	-1580.08	-594.72	40°05'56.013"N	104°53'40.055"W	1.14	
9323.00	91.530	182.650	7564.15	1775.21	-1759.75	-603.62	40°05'54.238"N	104°53'40.169"W	0.54	
9502.00	92.980	182.460	7557.11	1954.04	-1938.43	-611.59	40°05'52.472"N	104°53'40.272"W	0.82	
9682.00	92.360	180.720	7548.72	2133.83	-2118.16	-616.58	40°05'50.696"N	104°53'40.336"W	1.03	
9862.00	88.830	180.900	7546.85	2313.78	-2298.10	-619.12	40°05'48.918"N	104°53'40.369"W	1.96	

REFERENCE WELLPATH IDENTIFICATION			
Operator	KERR-MCGEE OIL & GAS ONSHORE LP (WA)	Slot	SLOT#16 HUNZIKER 28N-4HZ (433'FSL & 1698'FEL, SEC.28)
Area	COLORADO	Well	HUNZIKER 28N-4HZ
Field	WELD COUNTY (UTM/TRUE NORTH)	Wellbore	HUNZIKER 28N-4HZ AWB <13638>
Facility	SEC.28-T2N-R67W		

WELLPATH DATA (112 stations)										
MD [ft]	Inclination [°]	Azimuth [°]	TVD [ft]	Vert Sect [ft]	North [ft]	East [ft]	Latitude	Longitude	DLS [°/100ft]	Comments
10041.00	89.070	182.440	7550.13	2492.75	-2476.99	-624.34	40°05'47.150"N	104°53'40.436"W	0.87	
10221.00	90.150	182.300	7551.36	2672.72	-2656.83	-631.78	40°05'45.373"N	104°53'40.532"W	0.61	
10401.00	89.470	182.510	7551.96	2852.70	-2836.67	-639.33	40°05'43.596"N	104°53'40.629"W	0.40	
10580.00	88.120	181.370	7555.72	3031.64	-3015.52	-645.39	40°05'41.828"N	104°53'40.707"W	0.99	
10760.00	90.030	184.070	7558.63	3211.56	-3195.27	-653.93	40°05'40.052"N	104°53'40.816"W	1.84	
10940.00	88.460	182.330	7561.00	3391.45	-3374.96	-663.98	40°05'38.276"N	104°53'40.946"W	1.30	
11119.00	89.870	182.190	7563.61	3570.41	-3553.79	-671.04	40°05'36.509"N	104°53'41.036"W	0.79	
11299.00	91.220	181.780	7561.89	3750.40	-3733.67	-677.27	40°05'34.731"N	104°53'41.117"W	0.78	
11479.00	88.980	180.720	7561.58	3930.38	-3913.62	-681.20	40°05'32.953"N	104°53'41.167"W	1.38	
11658.00	87.990	180.230	7566.31	4109.28	-4092.54	-682.68	40°05'31.185"N	104°53'41.186"W	0.62	
11838.00	89.100	181.110	7570.88	4289.20	-4272.47	-684.79	40°05'29.407"N	104°53'41.213"W	0.79	
12018.00	90.550	181.280	7571.43	4469.19	-4452.42	-688.54	40°05'27.628"N	104°53'41.261"W	0.81	
12197.00	90.610	179.940	7569.62	4648.16	-4631.40	-690.45	40°05'25.860"N	104°53'41.286"W	0.75	
12377.00	90.360	179.580	7568.10	4828.06	-4811.39	-689.69	40°05'24.081"N	104°53'41.276"W	0.24	
12557.00	90.270	179.100	7567.11	5007.93	-4991.38	-687.62	40°05'22.302"N	104°53'41.249"W	0.27	
12736.00	91.870	180.120	7563.77	5186.79	-5170.33	-686.40	40°05'20.534"N	104°53'41.233"W	1.06	
12916.00	89.750	179.990	7561.22	5366.70	-5350.31	-686.57	40°05'18.755"N	104°53'41.236"W	1.18	
13095.00	89.750	180.260	7562.00	5545.65	-5529.30	-686.96	40°05'16.986"N	104°53'41.241"W	0.15	
13275.00	89.440	180.340	7563.27	5725.60	-5709.30	-687.91	40°05'15.208"N	104°53'41.253"W	0.18	
13455.00	89.930	181.020	7564.26	5905.58	-5889.28	-690.04	40°05'13.429"N	104°53'41.280"W	0.47	
13584.00	90.550	180.440	7563.72	6034.56	-6018.27	-691.69	40°05'12.154"N	104°53'41.301"W	0.66	LAST BHI MWD+IFR SURVEYS
13638.00	90.550	180.440	7563.21	6088.55	-6072.26	-692.10	40°05'11.621"N	104°53'41.306"W	0.00	PROJECTION TO BIT

HOLE & CASING SECTIONS - Ref Wellbore: HUNZIKER 28N-4HZ AWB <13638> Ref Wellpath: HUNZIKER 28N-4HZ AWP									
String/Diameter	Start MD [ft]	End MD [ft]	Interval [ft]	Start TVD [ft]	End TVD [ft]	Start N/S [ft]	Start E/W [ft]	End N/S [ft]	End E/W [ft]
13.5in Open Hole	20.00	1341.00	1321.00	20.00	1340.95	0.00	0.00	0.97	-2.39
9.625in Casing Surface	20.00	1331.00	1311.00	20.00	1330.95	0.00	0.00	0.84	-2.35
8.75in Open Hole	1341.00	8055.00	6714.00	1340.95	7566.10	0.97	-2.39	-492.91	-567.32
7in Casing Intermediate	20.00	8045.00	8025.00	20.00	7565.07	0.00	0.00	-482.96	-567.28
6.125in Open Hole	8055.00	13638.00	5583.00	7566.10	7563.21	-492.91	-567.32	-6072.26	-692.10



Actual Wellpath Report

HUNZIKER 28N-4HZ AWP

Page 5 of 6



REFERENCE WELLPATH IDENTIFICATION			
Operator	KERR-MCGEE OIL & GAS ONSHORE LP (WA)	Slot	SLOT#16 HUNZIKER 28N-4HZ (433'FSL & 1698'FEL, SEC.28)
Area	COLORADO	Well	HUNZIKER 28N-4HZ
Field	WELD COUNTY (UTM/TRUE NORTH)	Wellbore	HUNZIKER 28N-4HZ AWB <13638>
Facility	SEC.28-T2N-R67W		

TARGETS								
Name	TVD [ft]	North [ft]	East [ft]	Grid East [US ft]	Grid North [US ft]	Latitude	Longitude	Shape
SEC.04-T1N-R67W SECTION LINES	5069.00	-1.09	150.19	1670673.34	14564341.34	40°06'11.617"N	104°53'30.469"W	polygon
SEC.28-T2N-R67W SECTION LINES	5069.00	-1.09	150.19	1670673.34	14564341.34	40°06'11.617"N	104°53'30.469"W	polygon
SEC.33-T2N-R67W SECTION LINES	5069.00	-1.09	150.19	1670673.34	14564341.34	40°06'11.617"N	104°53'30.469"W	polygon
HUNZIKER 28N-4HZ BHL ON PLAT REV-1 (360'FNL & 2370'FEL, SEC.04)	7567.00	-6072.39	-725.30	1669805.55	14558271.42	40°05'11.620"N	104°53'41.734"W	point
HUNZIKER 28N-4HZ LANDBOX	7567.00	0.00	0.00	1670523.21	14564342.25	40°06'11.628"N	104°53'32.402"W	polygon

WELLPATH COMPOSITION - Ref Wellbore: HUNZIKER 28N-4HZ AWB <13638>				Ref Wellpath: HUNZIKER 28N-4HZ AWP	
Start MD [ft]	End MD [ft]	Positional Uncertainty Model	Log Name/Comment	Wellbore	
20.00	1298.00	ISCWSA MWD, Rev. 2 (Standard)	CATHEDRAL MWD SURVEYS 13.5" <127-1298>	HUNZIKER 28N-4HZ AWB <13638>	
1298.00	8006.00	Custom APC ISCWSA REV 2 MWD+IFR1+SC (approximation)	BHI MWD+IFR SURVEYS 8.75" <1648-8006>	HUNZIKER 28N-4HZ AWB <13638>	
8006.00	13584.00	Custom APC ISCWSA REV 2 MWD+IFR1+SC (approximation)	BHI MWD+IFR SURVEYS 6.125" <8155-13584>	HUNZIKER 28N-4HZ AWB <13638>	
13584.00	13638.00	Blind Drilling (std)	Projection to bit	HUNZIKER 28N-4HZ AWB <13638>	



Actual Wellpath Report

HUNZIKER 28N-4HZ AWP
Page 6 of 6



REFERENCE WELLPATH IDENTIFICATION			
Operator	KERR-MCGEE OIL & GAS ONSHORE LP (WA)	Slot	SLOT#16 HUNZIKER 28N-4HZ (433'FSL & 1698'FEL, SEC.28)
Area	COLORADO	Well	HUNZIKER 28N-4HZ
Field	WELD COUNTY (UTM/TRUE NORTH)	Wellbore	HUNZIKER 28N-4HZ AWB <13638>
Facility	SEC.28-T2N-R67W		

WELLPATH COMMENTS					
MD [ft]	Inclination [°]		Azimuth [°]	TVD [ft]	Comment
127.00	0.200		338.900	127.00	BEGIN MWD SURVEYS
1298.00	0.800		340.200	1297.95	TIE-ONTO MWD SURVEYS
1648.00	0.520		23.900	1647.93	BEGIN BHI MWD+IFR SURVEYS
8045.00	83.947		180.170	7565.07	7" CASING POINT
13584.00	90.550		180.440	7563.72	LAST BHI MWD+IFR SURVEYS
13638.00	90.550		180.440	7563.21	PROJECTION TO BIT