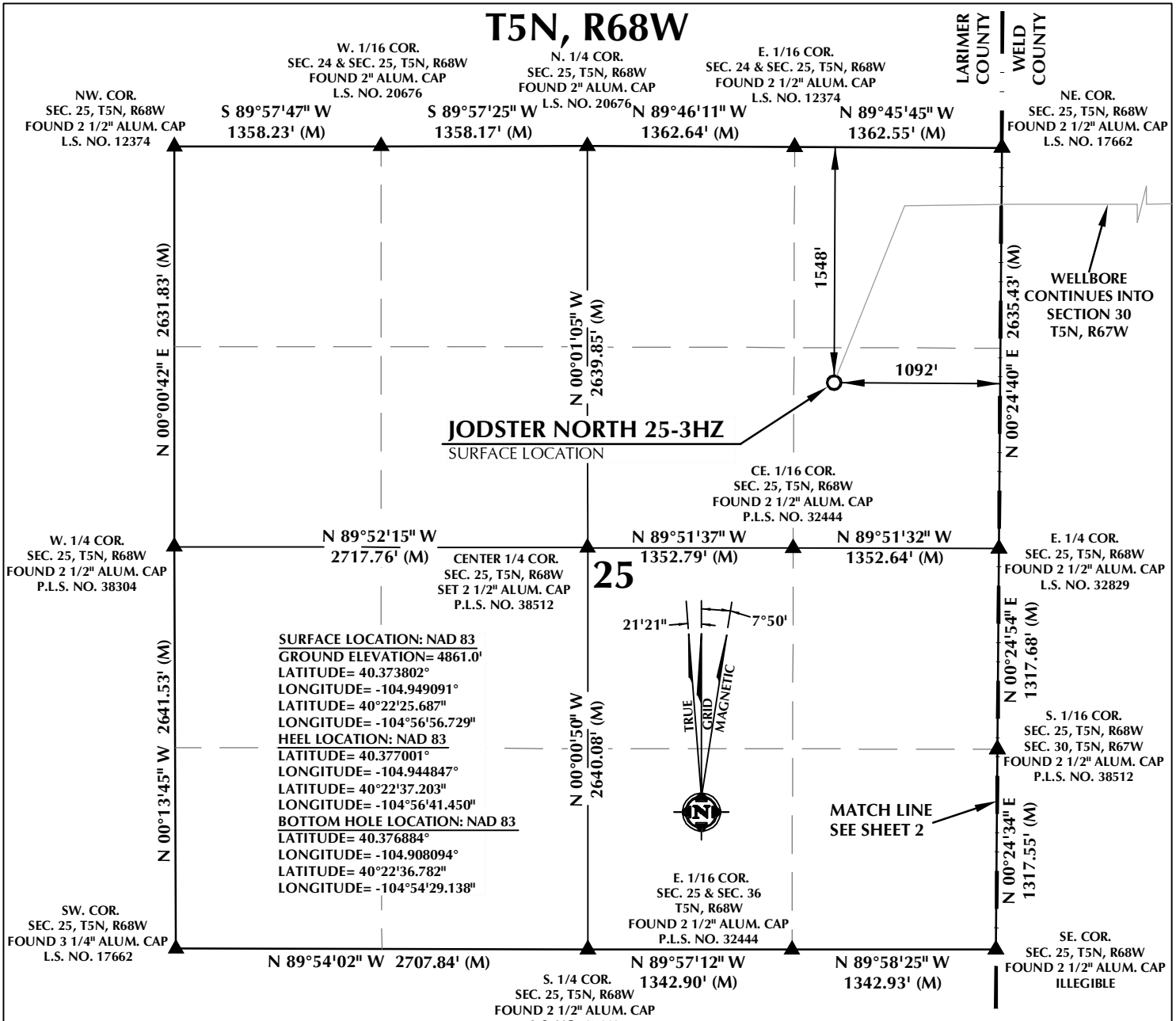


T5N, R68W



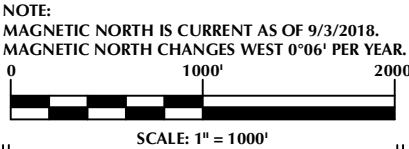
SURFACE LOCATION: NAD 83
 GROUND ELEVATION= 4861.0'
 LATITUDE= 40.373802°
 LONGITUDE= -104.949091°
 LATITUDE= 40°22'25.687"
 LONGITUDE= -104°56'56.729"
HEEL LOCATION: NAD 83
 LATITUDE= 40.377001°
 LONGITUDE= -104.944847°
 LATITUDE= 40°22'37.203"
 LONGITUDE= -104°56'41.450"
BOTTOM HOLE LOCATION: NAD 83
 LATITUDE= 40.376884°
 LONGITUDE= -104.908094°
 LATITUDE= 40°22'36.782"
 LONGITUDE= -104°54'29.138"

CERTIFICATE OF SURVEYOR:

THIS IS TO CERTIFY THAT THE ABOVE PLAT WAS PREPARED FROM FIELD NOTES OF ACTUAL SURVEYS MADE BY ME OR UNDER MY SUPERVISION AND THAT THE SAME ARE TRUE AND CORRECT TO THE BEST OF MY KNOWLEDGE AND BELIEF. THIS CERTIFICATE DOES NOT REPRESENT A LAND SURVEY THAT OR IMPROVEMENT SURVEY PLAT AS DEFINED BY C.R.S. 38-50-102 AND CANNOT BE RELIED UPON TO DETERMINE OWNERSHIP.

Randall K. French
 RANDALL K. FRENCH
 PROFESSIONAL LAND SURVEYOR
 COLORADO REGISTRATION NUMBER 38512
 10/3/19

NOTICE:
 ACCORDING TO COLORADO STATE LAW YOU MUST COMMENCE LEGAL ACTION BASED UPON ANY DEFECT IN THIS SURVEY WITHIN THREE YEARS AFTER YOU FIRST DISCOVER SUCH DEFECT. IN NO EVENT MAY ANY ACTION BASED UPON ANY DEFECT IN THIS SURVEY BE COMMENCED MORE THAN TEN YEARS FROM THE DATE ON THE CERTIFICATION SHOWN HEREON.



NOTES:

- ▲ INDICATES SECTION CORNER.
- INDICATES CALCULATED CORNER.
- ELEVATION BASED ON NAVD88 (GEOID12B).
- BASIS OF BEARING DERIVED FROM COLORADO COORDINATE SYSTEM OF 1983 NORTH ZONE.
- ALL MEASURED DISTANCES ARE GRID.
 COMBINED SCALE FACTOR: .99972964 CALCULATED FROM THE E. 1/4 CORNER OF SECTION 25, T5N, R68W.
 OPERATOR: ROB WILSON / PDOP = 1.4.
- SEE ADDENDUM TO WELL LOCATION CERTIFICATE FOR EXISTING IMPROVEMENTS WITHIN 500' OF THE WELL PAD.
- WELL FOOTAGES ARE MEASURED AT RIGHT ANGLES TO THE SECTION LINES.
- THE BOTTOM OF HOLE BEARS N89°52'03"E, 10240' FROM THE HEEL LOCATION.

WELL PAD - JODSTER NORTH 8-25HZ

JODSTER NORTH 25-3HZ
WELL LOCATION CERTIFICATE
 1548' FNL & 1092' FEL SENE (SURFACE)
 LOCATED IN SECTION 25, T5N, R68W, 6TH P.M.
 LARIMER COUNTY, COLORADO
 371' FNL & 75' FWL LOT 2 (NWNW) (HEEL)
 LOCATED IN SECTION 30
 345' FNL & 160' FEL NENE (BOTTOM)
 LOCATED IN SECTION 29, T5N, R67W, 6TH P.M.
 WELD COUNTY, COLORADO

Kerr-McGee Oil & Gas Onshore L.P.
 1099 18th Street
 Denver, Colorado 80202

609

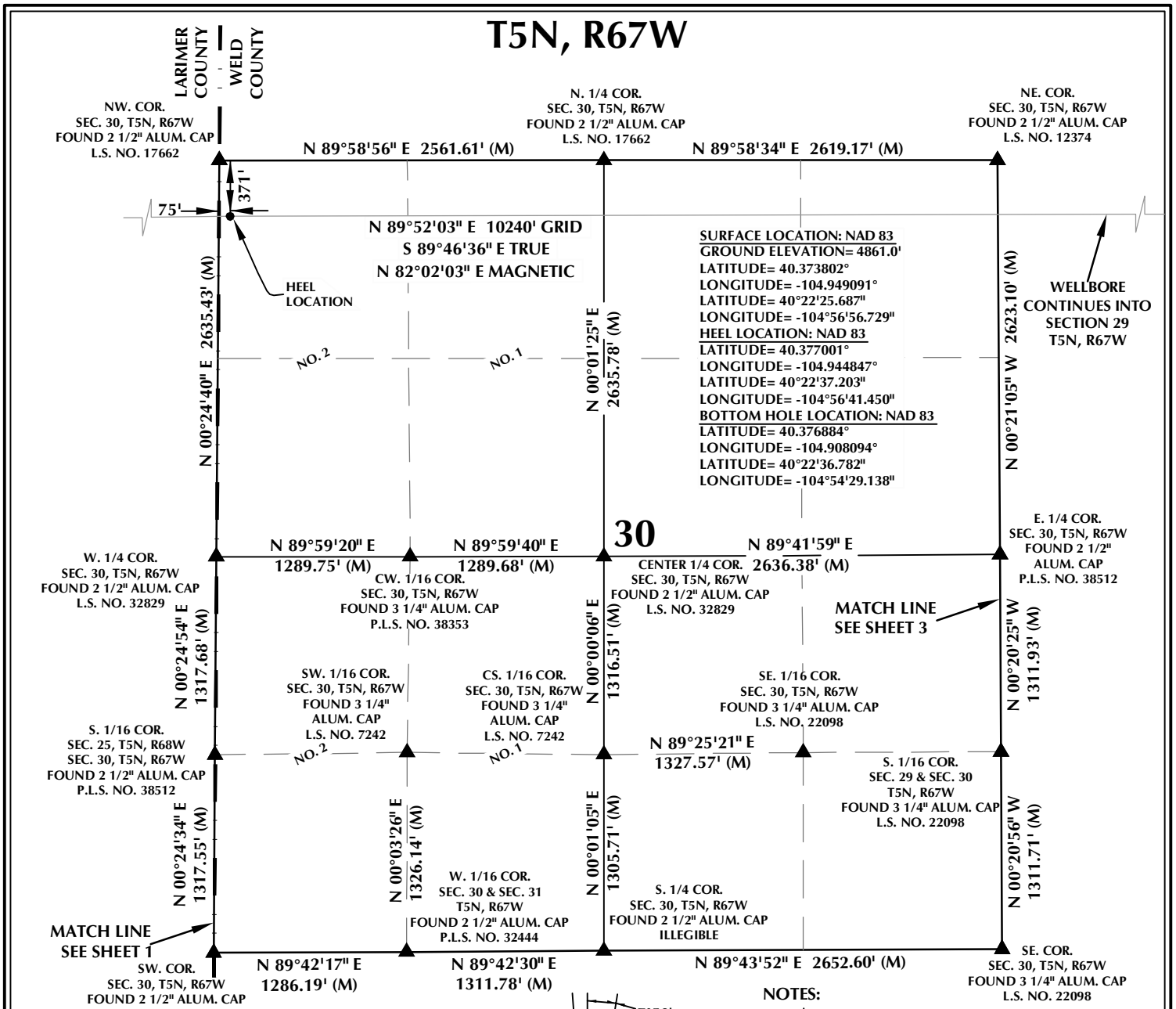
CONSULTING, LLC

SHERIDAN OFFICE
 1095 Saberton Avenue
 Sheridan, Wyoming 82801
 Phone 307-674-0609

LOVELAND OFFICE
 6706 North Franklin Avenue
 Loveland, Colorado 80538
 Phone 970-776-4331

DRAFTED BY: LMO	CHECKED BY: RKF	SHEET NO:	1
DATE DRAFTED: 9/20/18	DATE SURVEYED: 9/3/18		
REVISED: 10/3/19	FILE NAME: 16-95		1 OF 3

T5N, R67W



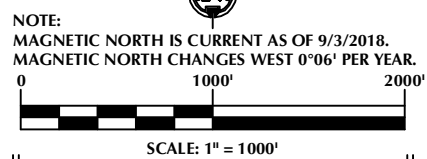
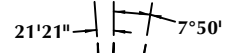
SURFACE LOCATION: NAD 83
 GROUND ELEVATION= 4861.0'
 LATITUDE= 40.373802°
 LONGITUDE= -104.949091°
 LATITUDE= 40°22'25.687"
 LONGITUDE= -104°56'56.729"
HEEL LOCATION: NAD 83
 LATITUDE= 40.377001°
 LONGITUDE= -104.944847°
 LATITUDE= 40°22'37.203"
 LONGITUDE= -104°56'41.450"
BOTTOM HOLE LOCATION: NAD 83
 LATITUDE= 40.376884°
 LONGITUDE= -104.908094°
 LATITUDE= 40°22'36.782"
 LONGITUDE= -104°54'29.138"

CERTIFICATE OF SURVEYOR:

THIS IS TO CERTIFY THAT THE ABOVE PLAT WAS PREPARED FROM FIELD NOTES OF ACTUAL SURVEYS MADE BY ME OR UNDER MY SUPERVISION AND THAT THE SAME ARE TRUE AND CORRECT TO THE BEST OF MY KNOWLEDGE AND BELIEF. THIS CERTIFICATE DOES NOT REPRESENT A LAND SURVEY THAT OR IMPROVEMENT SURVEY PLAT AS DEFINED BY C.R.S. 38-5-102 AND CANNOT BE RELIED UPON TO DETERMINE OWNERSHIP.

Randall K. French
PROFESSIONAL LAND SURVEYOR
 COLORADO REGISTRATION NUMBER 38512
 10/3/19

NOTICE:
 ACCORDING TO COLORADO STATE LAW YOU MUST COMMENCE LEGAL ACTION BASED UPON ANY DEFECT IN THIS SURVEY WITHIN THREE YEARS AFTER YOU FIRST DISCOVER SUCH DEFECT. IN NO EVENT MAY ANY ACTION BASED UPON ANY DEFECT IN THIS SURVEY BE COMMENCED MORE THAN TEN YEARS FROM THE DATE ON THE CERTIFICATION SHOWN HEREON.



NOTES:

- ▲ INDICATES SECTION CORNER.
- INDICATES CALCULATED CORNER.
- ELEVATION BASED ON NAVD88 (GEOID12B).
- BASIS OF BEARING DERIVED FROM COLORADO COORDINATE SYSTEM OF 1983 NORTH ZONE.
- ALL MEASURED DISTANCES ARE GRID. COMBINED SCALE FACTOR: .99972964 CALCULATED FROM THE E. 1/4 CORNER OF SECTION 25, T5N, R68W.
- OPERATOR: ROB WILSON / PDOP = 1.4.
- SEE ADDENDUM TO WELL LOCATION CERTIFICATE FOR EXISTING IMPROVEMENTS WITHIN 500' OF THE WELL PAD.
- WELL FOOTAGES ARE MEASURED AT RIGHT ANGLES TO THE SECTION LINES.
- THE BOTTOM OF HOLE BEARS N89°52'03"E, 10240' FROM THE HEEL LOCATION.
- NO. 1 & NO. 2 AS SHOWN HEREON ARE GOVERNMENT LOTS 1 & 2 PER THE ORIGINAL GLO SURVEY.

WELL PAD - JODSTER NORTH 8-25HZ

JODSTER NORTH 25-3HZ
WELL LOCATION CERTIFICATE
 1548' FNL & 1092' FEL SENE (SURFACE)
 LOCATED IN SECTION 25, T5N, R68W, 6TH P.M.
 LARIMER COUNTY, COLORADO
 371' FNL & 75' FWL LOT 2 (NWNW) (HEEL)
 LOCATED IN SECTION 30
 345' FNL & 160' FEL NENE (BOTTOM)
 LOCATED IN SECTION 29, T5N, R67W, 6TH P.M.
 WELD COUNTY, COLORADO

Kerr-McGee Oil & Gas Onshore L.P.
 1099 18th Street
 Denver, Colorado 80202



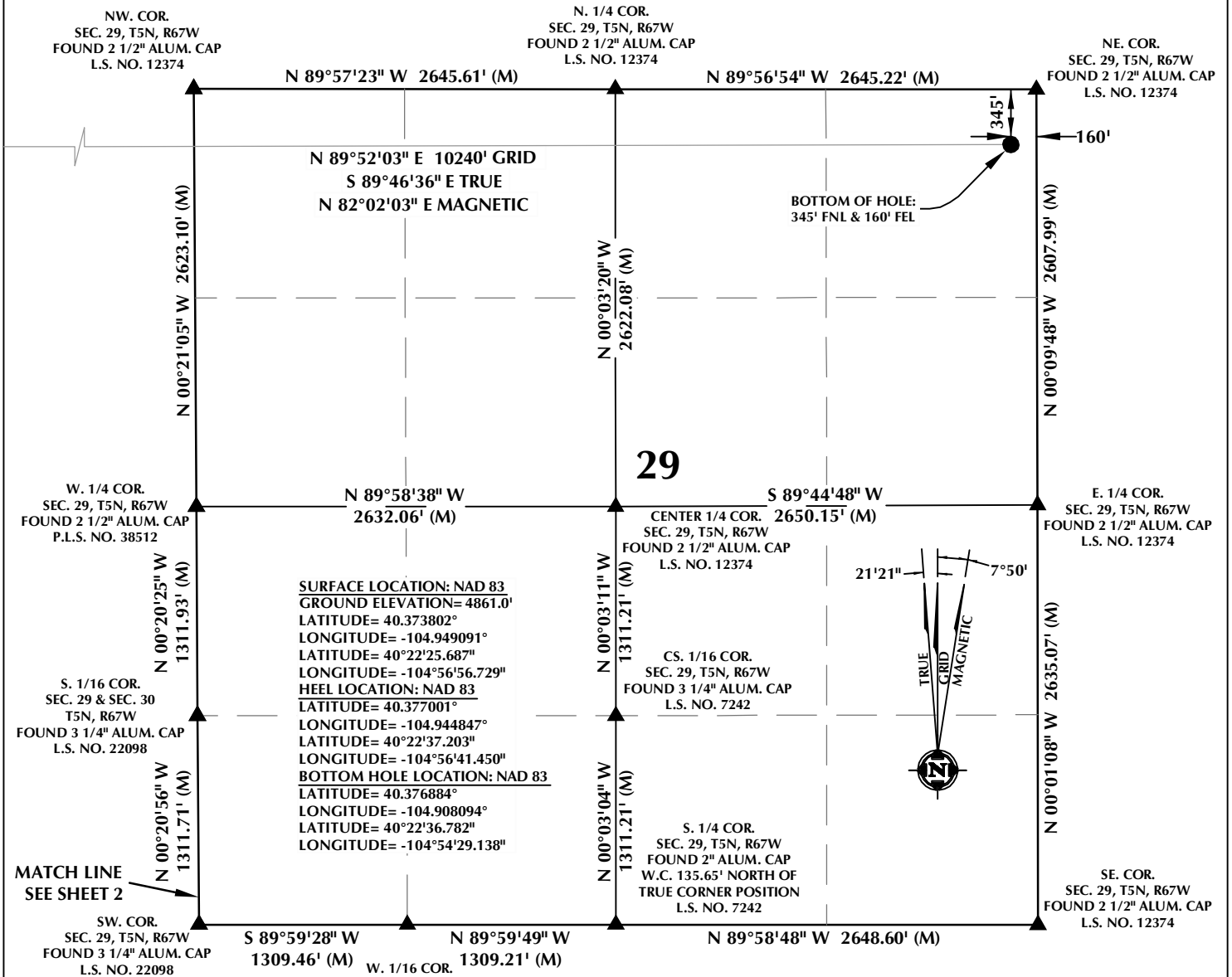
CONSULTING, LLC

SHERIDAN OFFICE
 1095 Saberton Avenue
 Sheridan, Wyoming 82801
 Phone 307-674-0609

LOVELAND OFFICE
 6706 North Franklin Avenue
 Loveland, Colorado 80538
 Phone 970-776-4331

DRAFTED BY: LMO	CHECKED BY: RKF	SHEET NO: 2 2 OF 3
DATE DRAFTED: 9/20/18	DATE SURVEYED: 9/3/18	
REVISED: 10/3/19	FILE NAME: 16-95	

T5N, R67W

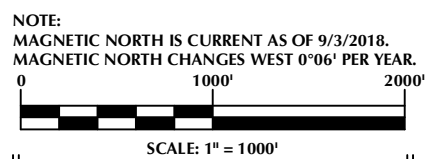


CERTIFICATE OF SURVEYOR:

THIS IS TO CERTIFY THAT THE ABOVE PLAT WAS PREPARED FROM FIELD NOTES OF ACTUAL SURVEYS MADE BY ME OR UNDER MY SUPERVISION AND THAT THE SAID BEARINGS AND CORRECT TO THE BEST OF MY KNOWLEDGE AND BELIEF. THIS CERTIFICATE DOES NOT REPRESENT A LAND SURVEY THAT OR IMPROVEMENT SURVEY PLAT AS DEFINED BY C.S. 6-5-102 AND CANNOT BE RELIED UPON TO DETERMINE OWNERSHIP.

Randall K. French
RANDALL K. FRENCH
 PROFESSIONAL LAND SURVEYOR
 COLORADO REGISTRATION NUMBER 38512
 10/3/19

NOTICE:
 ACCORDING TO COLORADO STATE LAW YOU MUST COMMENCE LEGAL ACTION BASED UPON ANY DEFECT IN THIS SURVEY WITHIN THREE YEARS AFTER YOU FIRST DISCOVER SUCH DEFECT. IN NO EVENT MAY ANY ACTION BASED UPON ANY DEFECT IN THIS SURVEY BE COMMENCED MORE THAN TEN YEARS FROM THE DATE ON THE CERTIFICATION SHOWN HEREON.



NOTES:

- ▲ INDICATES SECTION CORNER.
- INDICATES CALCULATED CORNER.
- ELEVATION BASED ON NAVD88 (GEOID12B).
- BASIS OF BEARING DERIVED FROM COLORADO COORDINATE SYSTEM OF 1983 NORTH ZONE.
- ALL MEASURED DISTANCES ARE GRID.
- COMBINED SCALE FACTOR: .99972964 CALCULATED FROM THE E. 1/4 CORNER OF SECTION 25, T5N, R68W.
- OPERATOR: ROB WILSON / PDOP = 1.4.
- SEE ADDENDUM TO WELL LOCATION CERTIFICATE FOR EXISTING IMPROVEMENTS WITHIN 500' OF THE WELL PAD.
- WELL FOOTAGES ARE MEASURED AT RIGHT ANGLES TO THE SECTION LINES.
- THE BOTTOM OF HOLE BEARS N89°52'03"E, 10240' FROM THE HEEL LOCATION.

WELL PAD - JODSTER NORTH 8-25HZ

JODSTER NORTH 25-3HZ
WELL LOCATION CERTIFICATE
 1548' FNL & 1092' FEL SENE (SURFACE)
 LOCATED IN SECTION 25, T5N, R68W, 6TH P.M.
 LARIMER COUNTY, COLORADO
 371' FNL & 75' FWL LOT 2 (NWNW) (HEEL)
 LOCATED IN SECTION 30
 345' FNL & 160' FEL NENE (BOTTOM)
 LOCATED IN SECTION 29, T5N, R67W, 6TH P.M.
 WELD COUNTY, COLORADO

Kerr-McGee Oil & Gas Onshore L.P.
 1099 18th Street
 Denver, Colorado 80202

609 CONSULTING, LLC

SHERIDAN OFFICE
 1095 Saberton Avenue
 Sheridan, Wyoming 82801
 Phone 307-674-0609

LOVELAND OFFICE
 6706 North Franklin Avenue
 Loveland, Colorado 80538
 Phone 970-776-4331

DRAFTED BY: LMO	CHECKED BY: RKF	SHEET NO: 3 3 OF 3
DATE DRAFTED: 9/20/18	DATE SURVEYED: 9/3/18	
REVISED: 10/3/19	FILE NAME: 16-95	