

Bost Farm 4N-11C-L IFR 0' to 17222' Definitive Survey Geodetic Report

(Def Survey)

Report Date: September 24, 2019 - 09:35 AM
Client: SRC Energy
Field: CO, Weld County (NAD 83 NZ) - SRC
Structure / Slot: SRC Energy 07-05N-66W (Bost Farm 5-7 Pad DSU 22) / Bost Farm 4N-11C-L
Well: Bost Farm 4N-11C-L
Borehole: Original Hole
UWI / API#: Unknown / 05-123-47658
Survey Name: Bost Farm 4N-11C-L IFR 0' to 17222' Definitive
Survey Date: May 20, 2019
Tort / AHD / DDI / ERD Ratio: 162.600 ° / 11490.187 ft / 6.659 / 1.629
Coordinate Reference System: NAD83 Colorado State Plane, Northern Zone, US Feet
Location Lat / Long: N 40° 25' 4.30320", W 104° 49' 42.10680"
Location Grid N/E Y/X: N 1395775.687 ftUS, E 3187006.786 ftUS
CRS Grid Convergence Angle: 0.4340 °
Grid Scale Factor: 0.99996109
Version / Patch: 2.10.782.0

Survey / DLS Computation: Minimum Curvature / Lubinski
Vertical Section Azimuth: 269.520 ° (True North)
Vertical Section Origin: 0.000 ft, 0.000 ft
TVD Reference Datum: KB 20ft
TVD Reference Elevation: 4898.000 ft above MSL
Seabed / Ground Elevation: 4878.000 ft above MSL
Magnetic Declination: 7.610 °
Total Gravity Field Strength: 999.0247mgn (9.80665 Based)
Gravity Model: GARM
Total Magnetic Field Strength: 52198.501 nT
Magnetic Dip Angle: 66.610 °
Declination Date: August 01, 2019
Magnetic Declination Model: Magvar IFR
North Reference: True North
Grid Convergence Used: 0.0000 °
Total Corr Mag North->True North: 7.6100 °
Local Coord Referenced To: Well Head

Comments	MD (ft)	Incl (°)	Azim True (°)	TVD (ft)	VSEC (ft)	NS (ft)	EW (ft)	DLS (°/100ft)	Northing (ftUS)	Easting (ftUS)	Latitude (°)	Longitude (°)
Surface	0.00	0.00	0.00	0.00	0.00	0.00	0.00	N/A	1395775.69	3187006.79	40.417862	-104.828363
KB Adjustment	20.00	0.00	0.53	20.00	0.00	0.00	0.00	0.00	1395775.69	3187006.79	40.417862	-104.828363
Begin IFR Survey	105.00	0.10	0.53	105.00	0.00	0.07	0.00	0.12	1395775.76	3187006.79	40.417862	-104.828363
	191.00	0.13	20.49	191.00	-0.04	0.24	0.04	0.06	1395775.93	3187006.82	40.417863	-104.828363
	281.00	0.97	326.78	281.00	0.34	0.97	-0.35	1.00	1395776.66	3187006.43	40.417865	-104.828364
	370.00	2.82	323.27	369.94	2.04	3.36	-2.07	2.08	1395779.03	3187004.69	40.417871	-104.828370
	460.00	4.84	328.02	459.74	5.33	8.35	-5.40	2.27	1395784.00	3187001.32	40.417885	-104.828382
	550.00	6.81	319.35	549.27	10.76	15.62	-10.89	2.39	1395791.23	3186995.78	40.417905	-104.828402
	640.00	8.08	313.09	638.51	18.78	23.99	-18.99	1.67	1395799.53	3186987.92	40.417928	-104.828431
	730.00	8.65	312.00	727.55	28.36	32.84	-28.64	0.66	1395808.31	3186977.90	40.417952	-104.828466
	820.00	8.61	311.55	816.53	38.35	41.84	-38.71	0.09	1395817.23	3186967.77	40.417977	-104.828502
	910.00	8.17	316.30	905.57	47.74	50.93	-48.17	0.91	1395826.25	3186958.24	40.418002	-104.828536
	1000.00	8.15	317.21	994.66	56.41	60.24	-56.92	0.15	1395835.49	3186949.42	40.418027	-104.828570
	1090.00	7.98	317.00	1083.77	64.93	69.49	-65.51	0.19	1395844.67	3186940.75	40.418053	-104.828598
	1180.00	8.97	316.57	1172.79	73.93	79.15	-74.60	1.10	1395854.27	3186931.59	40.418079	-104.828631
	1270.00	8.98	315.98	1261.68	83.55	89.30	-84.30	0.10	1395864.34	3186921.81	40.418107	-104.828666
	1360.00	9.00	317.10	1350.58	93.14	99.51	-93.97	0.20	1395874.47	3186912.06	40.418135	-104.828700
	1450.00	8.61	318.22	1439.52	102.33	109.69	-103.26	0.47	1395884.58	3186902.71	40.418163	-104.828734
	1540.00	8.92	321.73	1528.47	111.05	120.19	-112.07	0.69	1395895.02	3186893.92	40.418192	-104.828765
	1630.00	9.28	321.99	1617.33	119.75	131.38	-120.86	0.40	1395906.15	3186884.94	40.418223	-104.828797
	1720.00	9.23	322.61	1706.16	128.51	142.84	-129.71	0.12	1395917.53	3186876.01	40.418254	-104.828829
Last IFR Survey 9 5/8" Casing Begin	1750.00	8.96	320.92	1735.79	131.41	146.56	-132.64	1.27	1395921.23	3186873.04	40.418264	-104.828839
SLB_MWD Survey	1797.00	8.90	322.39	1782.22	135.89	152.28	-137.17	0.50	1395926.92	3186868.47	40.418280	-104.828856
	1873.00	8.82	324.80	1857.31	142.76	161.70	-144.12	0.50	1395936.29	3186861.46	40.418306	-104.828881
	1968.00	10.05	322.53	1951.02	151.89	174.23	-153.36	1.35	1395948.75	3186852.12	40.418340	-104.828914
	2061.00	11.67	319.59	2042.35	162.81	187.84	-164.39	1.84	1395962.27	3186840.98	40.418378	-104.828953
	2157.00	10.50	318.20	2136.56	174.82	201.75	-176.52	1.25	1395976.09	3186828.75	40.418416	-104.828997
	2252.00	10.45	318.02	2229.98	186.24	214.61	-188.05	0.06	1395988.86	3186817.13	40.418451	-104.829038
	2347.00	10.32	309.27	2323.43	198.50	226.40	-200.40	1.66	1396000.55	3186804.69	40.418483	-104.829083
	2440.00	11.05	314.67	2414.82	211.19	237.94	-213.19	1.33	1396011.99	3186791.81	40.418515	-104.829129
	2534.00	11.09	312.75	2507.07	224.13	250.41	-226.23	0.39	1396024.36	3186778.67	40.418549	-104.829175
	2628.00	11.13	316.65	2599.31	236.89	263.14	-239.10	0.80	1396037.00	3186765.71	40.418584	-104.829222
	2724.00	11.63	314.45	2693.42	250.04	276.66	-252.37	0.69	1396050.41	3186752.34	40.418621	-104.829269
	2819.00	11.07	313.20	2786.56	263.42	289.61	-265.85	0.64	1396063.26	3186738.76	40.418657	-104.829318
	2914.00	11.37	312.76	2879.75	276.83	302.21	-279.38	0.33	1396075.76	3186725.14	40.418692	-104.829366
	3008.00	11.12	313.09	2971.94	290.15	314.69	-292.80	0.27	1396088.14	3186711.63	40.418726	-104.829415
	3101.00	11.05	313.78	3063.21	303.03	326.98	-305.78	0.16	1396100.33	3186698.55	40.418760	-104.829461
	3194.00	11.00	313.07	3154.49	315.85	339.21	-318.70	0.16	1396112.46	3186685.54	40.418793	-104.829508
	3287.00	11.15	313.15	3245.76	328.78	351.42	-331.74	0.16	1396124.57	3186672.41	40.418827	-104.829554
	3380.00	10.91	312.78	3337.04	341.70	363.55	-344.76	0.27	1396136.60	3186659.30	40.418860	-104.829601
	3473.00	10.57	314.38	3428.41	354.16	375.49	-357.32	0.49	1396148.44	3186646.65	40.418893	-104.829646
	3567.00	10.55	312.98	3520.82	366.52	387.39	-369.77	0.27	1396160.24	3186634.10	40.418925	-104.829691
	3660.00	10.93	313.48	3612.19	379.04	399.26	-382.40	0.42	1396172.02	3186621.39	40.418958	-104.829736
	3755.00	10.90	315.54	3705.47	391.76	411.86	-395.23	0.41	1396184.53	3186608.47	40.418993	-104.829782
	3849.00	11.04	313.66	3797.76	404.39	424.42	-407.96	0.41	1396196.99	3186595.64	40.419027	-104.829828
	3942.00	11.09	313.29	3889.03	417.24	436.70	-420.92	0.09	1396209.17	3186582.59	40.419061	-104.829875
	4035.00	11.03	315.99	3980.30	429.83	449.23	-433.61	0.56	1396221.61	3186569.81	40.419095	-104.829920
	4127.00	10.54	315.25	4070.68	441.76	461.54	-445.65	0.55	1396233.82	3186557.58	40.419129	-104.829963
	4221.00	11.01	313.62	4163.02	454.21	473.84	-458.20	0.60	1396246.02	3186545.03	40.419163	-104.830009
	4313.00	10.91	311.47	4253.34	466.99	485.66	-471.08	0.46	1396257.75	3186532.06	40.419195	-104.830055
	4407.00	10.87	313.33	4345.65	480.01	497.64	-484.19	0.38	1396269.62	3186518.86	40.419228	-104.830102
	4500.00	10.77	312.82	4436.99	492.66	509.56	-496.95	0.15	1396281.45	3186506.02	40.419261	-104.830148
	4593.00	10.72	315.29	4528.36	505.02	521.61	-509.40	0.50	1396293.41	3186493.47	40.419294	-104.830192
	4686.00	10.92	314.28	4619.71	517.30	533.91	-521.80	0.30	1396305.61	3186480.98	40.419328	-104.830237
	4780.00	10.91	312.66	4712.01	530.12	546.15	-534.71	0.33	1396317.75	3186467.98	40.419361	-104.830283
	4872.00	10.99	313.91	4802.34	542.74	558.14	-547.43	0.27	1396329.64	3186455.17	40.419394	-104.830329
	4965.00	10.90	313.44	4893.64	555.40	570.33	-560.20	0.14	1396341.73	3186442.30	40.419427	-104.830375
	5058.00	10.94	312.68	4984.96	568.18	582.36	-573.07	0.16	1396353.66	3186429.34	40.419460	-104.830421
	5151.00	10.76	313.94	5076.30	580.81	594.36	-585.81	0.32	1396365.57	3186416.51	40.419493	-104.830467
	5245.00	10.86	312.75	5168.63	593.53	606.46	-598.63	0.26	1396377.57	3186403.60	40.419527	-104.830513
	5337.00	10.88	313.31	5258.98	606.12	618.30	-611.32	0.12	1396389.32	3186390.83	40.419559	-104.830558
	5430.00	10.89	312.64	5350.31	618.86	630.27	-624.17	0.14	1396401.19	3186377.87	40.419592	-104.830605
	5523.00	11.00	312.11	5441.61	631.81	642.18	-637.21	0.16	1396412.99	3186364.76	40.419625	-104.830651
	5616.00	10.71	313.79	5532.95	644.53	654.10	-650.03	0.46	1396424.82	3186351.85	40.419657	-104.830698
	5710.00	10.92	313.15	5625.28	657.23	666.24	-662.83	0.26	1396436.86	3186338.95	40.419691	-104.830744
	5802.00	10.81	313.59	5715.63	669.73	678.15	-675.44	0.15	1396448.67	3186326.26	40.419723	-104.830791
	5895.00	10.86	313.21	5806.97	682.33	690.16	-688.14	0.09	1396460.59	3186313.47	40.419756	-104.830834
	5989.00	10.93	313.32	5899.28	695.17	702.34	-701.08	0.08	1396472.66	3186300.44	40.419790	-104.830881
	6082.00	10.84	313.71	5990.61	707.80	714.43	-713.81	0.13	1396484.66	3186287.61	40.419823	-104.830927
	6175.00	10.59	314.01	6081.98	720.17	726.41	-726.28	0.28	1396496.54	3186275.05	40.419856	-104.830971
	6268.00	10.41	314.66	6173.43	732.19	738.25	-738.40	0.23	1396508.29	3186262.84	40.419888	-104.831015
	6362.00	10.56	314.40	6265.86	744.29	750.25	-750.60	0.17	1396520.20	3186250.56	40.419921	-104.831059
	6456.00	10.35	314.80	6358.30	756.33							

Comments	MD (ft)	Incl (°)	Azim True (°)	TVD (ft)	VSEC (ft)	NS (ft)	EW (ft)	DLS (°/100ft)	Northing (ftUS)	Easting (ftUS)	Latitude (°)	Longitude (°)
	6736.00	25.13	272.44	6625.40	831.87	785.64	-838.48	7.01	1396554.93	3186162.42	40.420018	-104.831374
	6828.00	32.78	272.61	6705.84	876.31	787.61	-882.94	8.32	1396556.56	3186117.94	40.420024	-104.831534
	6923.00	41.36	275.02	6781.58	933.34	791.54	-940.01	9.16	1396560.05	3186060.85	40.420035	-104.831739
	7017.00	49.86	277.82	6847.28	999.94	799.16	-1006.67	9.29	1396567.17	3185994.13	40.420056	-104.831978
	7110.00	55.41	276.90	6903.70	1073.14	808.60	-1079.95	6.02	1396576.05	3185920.79	40.420081	-104.832242
	7204.00	62.69	273.46	6952.02	1153.30	815.78	-1160.17	8.35	1396582.63	3185840.52	40.420101	-104.832530
	7298.00	71.82	270.41	6988.33	1239.81	818.63	-1246.71	10.16	1396584.82	3185753.96	40.420109	-104.832840
	7390.00	77.72	269.00	7012.49	1328.54	818.16	-1335.44	6.58	1396583.67	3185665.25	40.420108	-104.833159
	7484.00	83.64	268.57	7027.71	1421.25	816.19	-1428.13	6.31	1396581.00	3185572.57	40.420102	-104.833492
	7576.00	89.51	268.67	7033.20	1513.03	813.98	-1519.90	6.38	1396578.10	3185480.82	40.420096	-104.833822
	7669.00	89.70	269.07	7033.84	1606.02	812.14	-1612.88	0.48	1396575.56	3185387.87	40.420091	-104.834156
	7762.00	89.64	269.03	7034.38	1699.02	810.60	-1705.87	0.08	1396573.31	3185294.90	40.420087	-104.834490
	7854.00	89.78	269.32	7034.84	1791.01	809.28	-1797.86	0.35	1396571.29	3185202.93	40.420083	-104.834820
	7949.00	89.82	268.88	7035.18	1886.01	807.78	-1892.84	0.47	1396569.08	3185107.96	40.420079	-104.835161
	8042.00	89.79	268.64	7035.49	1979.00	805.77	-1985.82	0.26	1396566.36	3185015.00	40.420074	-104.835495
	8134.00	89.71	268.12	7035.89	2070.98	803.17	-2077.78	0.57	1396563.06	3184923.06	40.420066	-104.835825
	8227.00	89.66	268.02	7036.41	2163.95	800.04	-2170.73	0.12	1396559.23	3184830.15	40.420058	-104.836159
	8319.00	89.60	268.04	7037.00	2255.92	796.88	-2262.67	0.07	1396555.37	3184737.24	40.420049	-104.836489
	8413.00	89.89	267.89	7037.42	2349.88	793.54	-2356.61	0.35	1396551.32	3184644.33	40.420040	-104.836827
	8507.00	89.60	268.18	7037.84	2443.85	790.32	-2450.56	0.44	1396547.39	3184550.41	40.420031	-104.837164
	8600.00	89.57	268.13	7038.51	2536.82	787.32	-2543.51	0.06	1396543.69	3184457.49	40.420023	-104.837498
	8693.00	89.94	268.11	7038.91	2629.79	784.27	-2636.45	0.40	1396539.93	3184364.58	40.420014	-104.837832
	8785.00	89.97	268.22	7038.98	2721.77	781.32	-2728.41	0.12	1396536.29	3184272.67	40.420006	-104.838162
	8878.00	89.77	267.75	7039.19	2814.73	778.05	-2821.35	0.55	1396532.32	3184179.74	40.419997	-104.838496
	8972.00	89.82	269.00	7039.53	2908.71	775.39	-2915.31	1.33	1396528.94	3184085.81	40.419990	-104.838833
	9066.00	89.66	268.06	7039.95	3002.69	772.98	-3009.29	1.01	1396525.82	3183991.87	40.419983	-104.839171
	9159.00	89.75	268.51	7040.43	3095.67	770.19	-3102.23	0.49	1396522.33	3183898.94	40.419976	-104.839504
	9252.00	89.95	268.24	7040.68	3188.65	767.56	-3195.20	0.36	1396518.99	3183806.00	40.419968	-104.839838
	9345.00	89.78	268.44	7040.90	3281.63	764.86	-3288.16	0.28	1396515.59	3183713.07	40.419961	-104.840172
	9439.00	89.66	267.38	7041.35	3375.59	761.43	-3382.09	1.13	1396511.45	3183619.16	40.419951	-104.840510
	9532.00	89.75	266.95	7041.83	3468.51	756.84	-3474.98	0.47	1396506.15	3183526.32	40.419939	-104.840843
	9625.00	89.58	266.97	7042.38	3561.42	751.90	-3567.84	0.18	1396500.52	3183433.50	40.419925	-104.841177
	9717.00	89.87	267.16	7042.82	3653.33	747.19	-3659.72	0.38	1396495.11	3183341.66	40.419912	-104.841507
	9809.00	89.84	267.16	7043.05	3745.25	743.63	-3751.61	0.03	1396489.86	3183249.81	40.419900	-104.841837
	9903.00	89.63	266.92	7043.49	3839.17	737.78	-3845.48	0.34	1396484.29	3183155.98	40.419886	-104.842174
	9996.00	89.84	267.48	7043.94	3932.09	733.24	-3938.37	0.63	1396479.04	3183063.14	40.419874	-104.842507
	10088.00	89.74	267.27	7044.30	4024.02	729.02	-4030.27	0.24	1396474.14	3182971.27	40.419862	-104.842837
	10182.00	89.85	267.35	7044.64	4117.95	724.61	-4124.17	0.14	1396469.01	3182877.42	40.419850	-104.843175
	10275.00	89.79	267.38	7044.93	4210.89	720.34	-4217.07	0.07	1396464.03	3182784.56	40.419838	-104.843508
	10367.00	89.63	267.42	7045.40	4302.82	716.16	-4308.97	0.18	1396459.16	3182692.69	40.419827	-104.843838
	10460.00	89.79	267.21	7045.87	4395.75	711.81	-4401.87	0.28	1396454.11	3182599.83	40.419815	-104.844172
	10552.00	89.64	267.40	7046.32	4487.68	707.48	-4493.77	0.26	1396449.08	3182507.97	40.419803	-104.844502
	10645.00	89.69	266.96	7046.87	4580.60	702.91	-4586.65	0.48	1396443.81	3182415.13	40.419790	-104.844836
	10738.00	89.42	267.07	7047.59	4673.51	698.06	-4679.52	0.31	1396438.26	3182322.30	40.419777	-104.845169
	10831.00	89.68	266.96	7048.32	4766.42	693.22	-4772.39	0.30	1396432.71	3182229.47	40.419764	-104.845503
	10924.00	89.80	267.22	7048.74	4859.33	688.50	-4865.27	0.31	1396427.29	3182136.64	40.419751	-104.845836
	11017.00	89.71	267.07	7049.14	4952.25	683.87	-4958.16	0.19	1396421.95	3182043.80	40.419738	-104.846170
	11110.00	89.73	267.31	7049.60	5045.18	679.31	-5051.04	0.26	1396416.69	3181950.95	40.419725	-104.846503
	11203.00	89.40	266.31	7050.30	5138.07	674.13	-5143.90	1.13	1396410.81	3181858.14	40.419711	-104.846837
	11296.00	89.84	267.43	7050.92	5230.96	669.05	-5236.75	1.29	1396405.03	3181765.33	40.419697	-104.847170
	11388.00	89.45	267.56	7051.49	5322.90	665.03	-5328.66	0.45	1396400.32	3181673.46	40.419686	-104.847501
	11481.00	89.82	269.62	7052.08	5415.89	662.75	-5421.63	2.25	1396397.32	3181580.52	40.419680	-104.847834
	11575.00	89.77	269.39	7052.42	5509.88	661.93	-5515.62	0.25	1396395.80	3181486.53	40.419677	-104.848172
	11671.00	89.82	269.24	7052.76	5603.86	660.79	-5611.62	0.16	1396393.93	3181390.56	40.419674	-104.848517
	11764.00	89.81	269.51	7053.06	5697.88	659.77	-5704.61	0.29	1396392.21	3181297.58	40.419671	-104.848851
	11857.00	89.83	269.52	7053.35	5791.88	658.98	-5797.61	0.02	1396390.72	3181204.59	40.419669	-104.849185
	11949.00	89.83	269.34	7053.63	5883.88	658.07	-5889.60	0.20	1396389.10	3181112.61	40.419666	-104.849515
	12043.00	90.24	269.24	7053.57	5977.88	656.90	-5983.59	0.45	1396387.23	3181018.63	40.419663	-104.849853
	12137.00	90.12	269.77	7053.27	6071.88	656.09	-6077.59	0.58	1396385.70	3180924.65	40.419661	-104.850190
	12230.00	90.08	269.26	7053.11	6164.88	655.30	-6170.59	0.55	1396384.21	3180831.67	40.419659	-104.850524
	12324.00	90.22	269.39	7052.86	6258.88	654.20	-6264.58	0.20	1396382.39	3180737.69	40.419656	-104.850862
	12418.00	90.31	269.51	7052.43	6352.88	653.00	-6358.57	0.16	1396380.78	3180643.71	40.419653	-104.851199
	12512.00	90.27	268.73	7051.95	6446.87	651.85	-6452.56	0.83	1396378.62	3180549.74	40.419649	-104.851537
	12605.00	90.12	269.23	7051.64	6539.87	650.20	-6545.54	0.56	1396376.26	3180456.77	40.419644	-104.851871
	12698.00	90.27	269.36	7051.32	6632.87	649.05	-6638.54	0.21	1396374.41	3180363.80	40.419641	-104.852205
	12792.00	89.33	269.01	7051.65	6726.86	647.71	-6732.53	1.07	1396372.37	3180269.82	40.419637	-104.852542
	12885.00	90.39	269.42	7051.88	6819.86	646.44	-6825.52	1.22	1396370.39	3180176.85	40.419634	-104.852876
	12978.00	90.40	269.91	7051.24	6912.86	645.90	-6918.51	0.53	1396369.14	3180083.86	40.419632	-104.853210
	13072.00	90.29	269.41	7050.67	7006.85	645.34	-7012.51	0.54	1396367.87	3179989.88	40.419631	-104.853548
	13167.00	90.35	269.79	7050.14	7101.85	644.68	-7107.50	0.40	1396366.49	3179894.89	40.419629	-104.853889
	13259.00	90.35	269.46	7049.58	7193.85	644.07	-7199.50	0.36	1396365.19	3179802.91	40.419627	-104.854219
	13352.00	90.28	269.42	7049.07	7286.85	643.16	-7292.49	0.09	1396363.58	3179709.93	40.419624	-104.854553
	13445.00	90.39	270.29	7048.52	7379.85	642.93	-7385.49	0.94	1396362.64	3179616.94	40.419624	-104.854887
	13537.00	90.44	270.55	7047.86	7471.83	643.60	-7477.49	0.29	1396362.61	3179524.95	40.419626	-104.855218
	13630.00	90.47	270.73	7047.12	7564.81	644.64	-7570.48	0.20	1396362.95	3179431.95	40.419628	-104.855552
	13723.00	90.36	270.91	7046.44	7657.78	645.97	-7663.47	0.23	1396363.57	3179338.96	40.419632	-104.855886
	13817.00	90.34	270.48	7045.87	7751.76	647.11	-7757.46	0.46	1396364.00	3179244.97	40.419635	-104.856223
	13910.00	90.25	270.52	7045.39	7844.							

Comments	MD (ft)	Incl (°)	Azim True (°)	TVD (ft)	VSEC (ft)	NS (ft)	EW (ft)	DLS (°/100ft)	Northing (ftUS)	Easting (ftUS)	Latitude (°)	Longitude (°)
	16881.00	90.17	270.42	7028.69	10814.88	690.63	-10821.05	0.29	1396384.31	3176181.26	40.419751	-104.867226
	16973.00	90.42	271.33	7028.22	10906.86	692.04	-10913.04	1.03	1396385.02	3176089.27	40.419755	-104.867556
	17066.00	90.39	270.33	7027.56	10999.83	693.38	-11006.02	1.08	1396385.66	3175996.28	40.419759	-104.867890
	17159.00	90.30	270.55	7027.00	11092.81	694.10	-11099.02	0.26	1396385.67	3175903.28	40.419760	-104.868224
Last SLB_MWD Survey	17200.00	90.35	271.42	7026.77	11133.80	694.80	-11140.01	2.13	1396386.07	3175862.29	40.419762	-104.868372
Projection to Bit	17222.00	90.35	271.42	7026.63	11155.79	695.35	-11162.00	0.00	1396386.45	3175840.29	40.419764	-104.868451

Survey Type: Def Survey

Survey Error Model: ISCWSA Rev 0 *** 3-D 95.000% Confidence 2.7955 sigma

Survey Program:

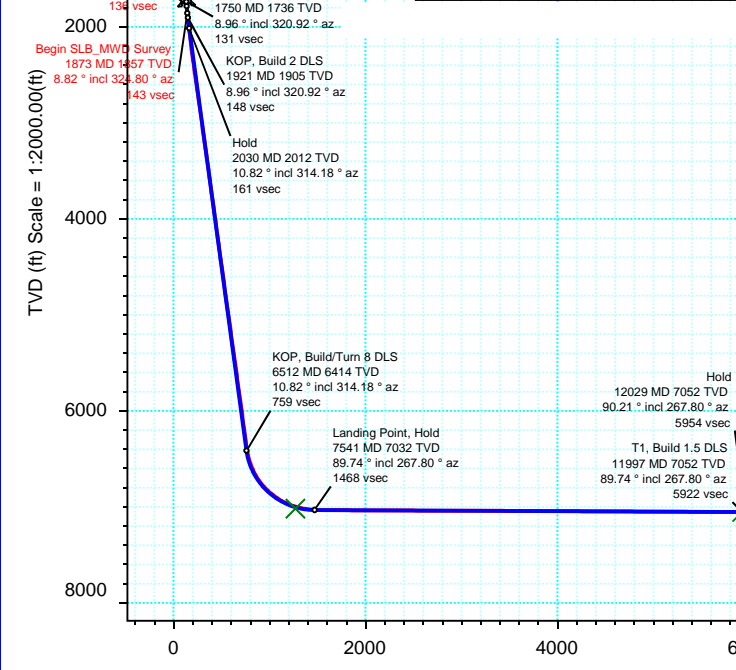
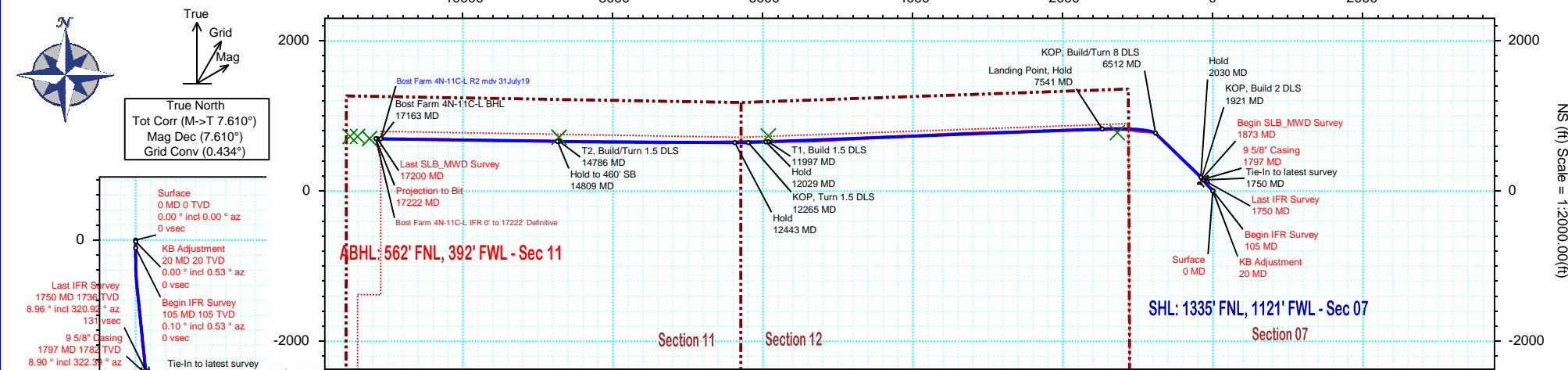
Description	Part	MD From (ft)	MD To (ft)	EOU Freq (ft)	Hole Size (in)	Casing Diameter (in)	Survey Tool Type	Borehole / Survey
	1	0.000	20.000	1/98.425	13.500	9.625	NAL_MWD_IFR1-Depth Only	Original Hole / Bost Farm 4N-11C-L IFR 0' to 17222' Definitive
	1	20.000	20.000	Act Stns	13.500	9.625	NAL_MWD_IFR1-Depth Only	Original Hole / Bost Farm 4N-11C-L IFR 0' to 17222' Definitive
	1	20.000	1797.000	Act Stns	13.500	9.625	NAL_MWD_IFR1	Original Hole / Bost Farm 4N-11C-L IFR 0' to 17222' Definitive
	1	1797.000	17222.000	Act Stns	8.500	5.500	NAL_MWD_IFR1+MS	Original Hole / Bost Farm 4N-11C-L IFR 0' to 17222' Definitive



Borehole: Original Hole	Well: Bost Farm 4N-11C-L	Field: CO, Weld County (NAD 83 NZ) - SRC	Structure: SRC Energy 07-05N-66W (Bost Farm 5-7 Pad DSU 22)
--	---	---	--

Gravity & Magnetic Parameters		Surface Location NAD83 Colorado State Plane, Northern Zone, US Feet			Miscellaneous	
Model: Magvar IFR	Dip: 66.61°	Date: 01-Aug-2019	Lat: N 40 25 4.30	Northing: 1395775.69ftUS	Grid Conv: 0.434°	Slot: Bost Farm 4N-11C-L
MagDec: 7.61°	FS: 52198.50inT	Gravity FS: 999.025mgn (9.80665 Based)	Lon: W 104 49 42.11	Easting: 3187006.79ftUS	Scale Fact: 0.99996109	TVD Ref: KB 20ft(4898ft above MSL)
						Plan: Bost Farm 4N-11C-L IFR 0' to 17222' Definitive

Final PVA



Target Description		Surface Location		Grid Coord		Local Coord	
Latitude	Longitude	Northing	Easting	TVD	VSec	N(+)/S(-)	E(+)/W(-)
N 40 24 50.94	W 104 49 41.85	1394423.60	3187036.52	4898.00	-8.16	-1352.33	19.49
N 40 24 50.94	W 104 49 41.85	1394423.60	3187036.52	4898.00	-8.16	-1352.33	19.49
N 40 25 2.72	W 104 49 42.12	1395615.75	3187006.61	4898.00	2.73	-159.93	-1.39
N 40 25 11.96	W 104 49 58.59	1396540.90	3185726.03	7018.00	1268.44	774.93	-1274.98
N 40 25 11.43	W 104 52 9.54	1396413.61	3175598.85	7027.50	11396.77	724.34	-11403.24
N 40 25 11.16	W 104 52 7.48	14679620.50	1676948.59	7027.50	11237.85	696.79	-11244.08
N 40 25 11.43	W 104 52 10.83	1396412.53	3175498.90	7027.50	11496.73	724.02	-11503.20
N 40 25 11.33	W 104 51 34.80	14679641.69	1679475.32	7041.90	8710.03	713.08	-8716.31
N 40 25 11.52	W 104 50 58.76	14679665.06	1682261.94	7052.20	5922.20	731.05	-5928.53

Critical Points								
Critical Point	MD	INCL	AZIM	TVD	VSEC	N(+)/S(-)	E(+)/W(-)	DLS
Surface	0.00	0.00	0.00	0.00	0.00	0.00	0.00	
KB Adjustment	20.00	0.00	0.53	20.00	0.00	0.00	0.00	0.00
Begin IFR Survey	105.00	0.10	0.53	105.00	0.00	0.07	0.00	0.12
Last IFR Survey	1750.00	8.96	320.92	1735.79	131.41	146.56	-132.64	1.27
9 5/8" Casing	1797.00	8.90	322.39	1782.22	135.89	152.28	-137.17	0.50
Begin SLB_MWD Survey	1873.00	8.82	324.80	1857.31	142.76	161.70	-144.12	0.50
Last SLB_MWD Survey	17200.00	90.35	271.42	7026.77	11133.80	694.80	-11140.01	2.13
Projection to Bit	17222.00	90.35	271.42	7026.63	11155.79	695.35	-11162.00	0.00

Vertical Section (ft) Azim = 269.52° Scale = 1:2000.00(ft) Origin = 0N/-S, 0E/-W