

# Bost Farm 5N-11A-L IFR 0' to 16899' Definitive Survey Geodetic Report

## (Def Survey)

**Report Date:** September 03, 2019 - 02:58 PM  
**Client:** SRC Energy  
**Field:** CO, Weld County (NAD 83 NZ) - SRC  
**Structure / Slot:** SRC Energy 07-05N-66W (Bost Farm 5-7 Pad DSU 22) / Bost Farm 5N-11A-L  
**Well:** Bost Farm 5N-11A-L  
**Borehole:** Original Hole  
**UWI / API#:** Unknown / 05-123-47660  
**Survey Name:** Bost Farm 5N-11A-L IFR 0' to 16899' Definitive  
**Survey Date:** May 20, 2019  
**Tort / AHD / DDI / ERD Ratio:** 206.647° / 11234.800 ft / 6.752 / 1.619  
**Coordinate Reference System:** NAD83 Colorado State Plane, Northern Zone, US Feet  
**Location Lat / Long:** N 40° 25' 3.11880", W 104° 49' 42.12120"  
**Location Grid N/E Y/X:** N 1395655.827 ftUS, E 3187006.580 ftUS  
**CRS Grid Convergence Angle:** 0.4340°  
**Grid Scale Factor:** 0.99996107  
**Version / Patch:** 2.10.782.0

**Survey / DLS Computation:** Minimum Curvature / Lubinski  
**Vertical Section Azimuth:** 269.950° (True North)  
**Vertical Section Origin:** 0.000 ft, 0.000 ft  
**TVD Reference Datum:** KB 20ft  
**TVD Reference Elevation:** 4898.000 ft above MSL  
**Seabed / Ground Elevation:** 4878.000 ft above MSL  
**Magnetic Declination:** 7.610°  
**Total Gravity Field Strength:** 999.0246mgn (9.80665 Based)  
**Gravity Model:** GARM  
**Total Magnetic Field Strength:** 52247.000 nT  
**Magnetic Dip Angle:** 66.610°  
**Declination Date:** July 15, 2019  
**Magnetic Declination Model:** Magvar IFR  
**North Reference:** True North  
**Grid Convergence Used:** 0.0000°  
**Total Corr Mag North→True North:** 7.6100°  
**Local Coord Referenced To:** Well Head

Comments	MD (ft)	Incl (°)	Azim True (°)	TVD (ft)	VSEC (ft)	NS (ft)	EW (ft)	DLS (°/100ft)	Northing (ftUS)	Easting (ftUS)	Latitude (°)	Longitude (°)
Surface	0.00	0.00	0.00	0.00	0.00	0.00	0.00	N/A	1395655.83	3187006.58	40.417533	-104.828367
KB Adjustment	20.00	0.00	310.68	20.00	0.00	0.00	0.00	0.00	1395655.83	3187006.58	40.417533	-104.828367
Begin IFR Survey	106.00	0.41	310.68	106.00	0.23	0.20	-0.23	0.48	1395656.03	3187006.35	40.417534	-104.828368
	191.00	0.51	312.80	191.00	0.74	0.66	-0.74	0.12	1395656.48	3187005.83	40.417535	-104.828370
	281.00	0.84	260.76	280.99	1.69	0.82	-1.69	0.74	1395656.64	3187004.89	40.417535	-104.828373
	370.00	2.20	237.99	369.96	3.78	-0.19	-3.78	1.64	1395655.61	3187002.80	40.417532	-104.828381
	460.00	4.19	226.37	459.81	7.63	-3.37	-7.62	2.31	1395652.40	3186998.98	40.417524	-104.828394
	550.00	6.45	228.30	549.42	13.79	-9.01	-13.78	2.52	1395646.72	3186992.87	40.417508	-104.828416
	640.00	8.38	234.00	638.67	22.87	-16.22	-22.86	2.29	1395639.43	3186983.84	40.417488	-104.828449
	730.00	8.97	236.20	727.64	34.02	-23.98	-34.00	0.75	1395631.59	3186972.77	40.417467	-104.828489
	820.00	7.89	242.01	816.66	45.31	-30.78	-45.28	1.53	1395624.70	3186961.53	40.417449	-104.828530
	910.00	7.50	242.55	905.85	55.98	-36.39	-55.95	0.44	1395619.02	3186950.91	40.417433	-104.828568
	1000.00	6.57	241.98	995.17	65.74	-41.52	-65.71	1.04	1395613.82	3186941.19	40.417419	-104.828603
	1090.00	6.22	239.58	1084.61	74.50	-46.40	-74.46	0.49	1395608.86	3186932.48	40.417406	-104.828634
	1180.00	6.30	237.56	1174.08	82.87	-51.52	-82.83	0.26	1395603.68	3186924.15	40.417392	-104.828664
	1270.00	6.49	240.06	1263.52	91.45	-56.71	-91.40	0.37	1395598.43	3186915.61	40.417377	-104.828695
	1360.00	6.44	238.47	1352.95	100.17	-61.89	-100.11	0.21	1395593.19	3186906.94	40.417363	-104.828727
	1450.00	5.90	241.86	1442.42	108.55	-66.71	-108.49	0.72	1395588.30	3186898.60	40.417350	-104.828757
	1540.00	5.45	239.77	1531.98	116.33	-71.04	-116.27	0.55	1395583.91	3186890.86	40.417338	-104.828785
	1630.00	5.70	241.34	1621.56	123.95	-75.34	-123.88	0.33	1395579.56	3186883.28	40.417326	-104.828812
	1720.00	6.39	242.19	1711.06	132.30	-79.82	-132.23	0.77	1395575.01	3186874.96	40.417314	-104.828842
	1750.00	6.27	242.53	1740.87	135.23	-81.35	-135.16	0.42	1395573.46	3186872.04	40.417310	-104.828852
Last IFR Survey 9 5/8" Casing Begin	1796.00	6.27	242.53	1786.60	139.69	-83.67	-139.62	0.00	1395571.11	3186867.60	40.417303	-104.828868
SLB_MWD Survey	1807.00	6.27	242.53	1797.53	140.76	-84.22	-140.69	0.00	1395570.54	3186866.54	40.417302	-104.828872
	1871.00	6.74	249.77	1861.12	147.39	-87.13	-147.31	1.48	1395567.58	3186859.94	40.417294	-104.828896
	1965.00	6.81	250.24	1954.47	157.81	-90.93	-157.73	0.09	1395563.71	3186849.55	40.417283	-104.828933
	2059.00	9.40	204.72	2047.52	170.38	-95.14	-170.29	2.77	1395559.41	3186837.02	40.417272	-104.828979
	2154.00	7.69	251.56	2141.46	183.80	-99.50	-183.72	1.80	1395554.94	3186823.63	40.417260	-104.829027
	2249.00	9.10	251.48	2235.44	196.96	-103.90	-196.87	1.48	1395550.45	3186810.51	40.417248	-104.829074
	2343.00	9.17	248.73	2328.25	211.00	-108.97	-210.90	0.47	1395545.26	3186796.52	40.417234	-104.829124
	2439.00	9.42	252.91	2422.99	225.64	-114.06	-225.54	0.75	1395540.07	3186781.92	40.417220	-104.829177
	2531.00	9.07	266.19	2513.80	240.07	-116.75	-239.97	2.34	1395537.27	3186767.51	40.417213	-104.829229
	2626.00	9.27	292.76	2607.63	254.61	-114.29	-254.51	4.42	1395539.62	3186752.96	40.417219	-104.829281
	2721.00	12.00	276.67	2701.01	271.47	-110.18	-271.38	4.22	1395543.60	3186736.06	40.417231	-104.829342
	2817.00	12.17	263.59	2794.90	291.45	-110.15	-291.35	2.85	1395543.48	3186716.09	40.417231	-104.829413
	2911.00	12.13	248.15	2886.82	310.47	-114.93	-310.37	3.45	1395538.55	3186697.11	40.417218	-104.829482
	3004.00	11.85	256.41	2977.80	328.82	-120.81	-328.72	1.87	1395532.53	3186678.80	40.417201	-104.829548
	3097.00	11.43	256.28	3068.89	347.06	-125.24	-346.95	0.45	1395527.96	3186660.60	40.417189	-104.829613
	3191.00	11.93	255.08	3160.94	365.50	-129.95	-365.39	0.59	1395523.11	3186642.20	40.417176	-104.829679
	3284.00	11.64	256.36	3251.98	383.91	-134.64	-383.79	0.42	1395518.29	3186623.83	40.417163	-104.829745
	3377.00	11.80	254.87	3343.04	402.21	-139.34	-402.09	0.37	1395513.46	3186605.57	40.417151	-104.829811
	3470.00	11.55	257.27	3434.12	420.48	-143.87	-420.35	0.59	1395508.78	3186587.57	40.417138	-104.829877
	3565.00	11.76	257.34	3527.16	439.20	-148.09	-439.08	0.22	1395504.42	3186568.66	40.417127	-104.829944
	3658.00	11.89	257.43	3618.18	457.81	-152.25	-457.67	0.14	1395500.12	3186550.59	40.417115	-104.830011
	3752.00	12.10	255.35	3710.13	476.79	-156.85	-476.66	0.51	1395495.38	3186531.14	40.417102	-104.830079
	3846.00	11.98	256.70	3802.06	495.82	-161.58	-495.68	0.33	1395490.50	3186512.16	40.417089	-104.830147
	3939.00	12.03	254.42	3893.03	514.56	-166.41	-514.41	0.51	1395485.53	3186493.47	40.417076	-104.830214
	4031.00	11.63	255.50	3983.08	532.77	-171.31	-532.62	0.50	1395480.50	3186475.29	40.417063	-104.830280
	4125.00	11.94	256.58	4075.10	551.41	-175.93	-551.26	0.40	1395475.73	3186456.70	40.417050	-104.830347
	4217.00	12.15	256.53	4165.07	570.09	-180.40	-569.93	0.23	1395471.13	3186438.06	40.417038	-104.830414
	4310.00	11.84	259.22	4256.04	588.98	-184.46	-588.82	0.69	1395466.92	3186419.20	40.417027	-104.830482
	4404.00	12.18	257.28	4347.98	608.13	-188.45	-607.96	0.56	1395462.79	3186400.09	40.417016	-104.830550
	4497.00	11.98	257.17	4438.92	627.11	-192.75	-626.95	0.22	1395458.34	3186381.14	40.417004	-104.830619
	4591.00	11.93	259.15	4530.89	646.17	-196.75	-646.00	0.44	1395454.20	3186362.12	40.416993	-104.830687
	4683.00	11.57	258.92	4620.96	664.57	-200.31	-664.39	0.39	1395450.50	3186343.75	40.416983	-104.830753
	4776.00	11.91	257.65	4712.01	683.10	-204.16	-682.92	0.46	1395446.51	3186325.25	40.416973	-104.830820
	4870.00	11.90	256.82	4803.99	702.01	-208.44	-701.83	0.18	1395442.09	3186306.38	40.416961	-104.830887
	4962.00	11.78	257.55	4894.03	720.42	-212.63	-720.24	0.21	1395437.76	3186288.00	40.416949	-104.830954
	5055.00	11.02	253.84	4985.20	738.23	-217.15	-738.04	1.14	1395433.10	3186270.23	40.416937	-104.831018
	5149.00	11.07	251.98	5077.46	755.45	-222.44	-755.26	0.38	1395427.68	3186253.06	40.416922	-104.831079
	5241.00	11.19	253.19	5167.73	772.40	-227.75	-772.20	0.29	1395422.24	3186236.16	40.416908	-104.831140
	5334.00	11.30	255.16	5258.94	789.85	-232.70	-789.65	0.43	1395417.16	3186218.75	40.416894	-104.831203
	5426.00	11.11	256.62	5349.19	807.19	-237.06	-806.98	0.37	1395412.67	3186201.45	40.416882	-104.831265
	5520.00	11.33	259.40	5441.39	825.08	-240.85	-824.87	0.62	1395408.74	3186183.59	40.416872	-104.831329
	5613.00	11.10	261.73	5532.62	842.92	-243.82	-842.71	0.55	1395405.64	3186165.78	40.416864	-104.831393
	5706.00	11.04	259.78	5623.89	860.55	-246.69	-860.33	0.41	1395402.64	3186148.18	40.416856	-104.831457
	5799.00	10.59	259.08	5715.24	877.70	-249.89	-877.49	0.50	1395399.31	3186131.05	40.416847	-104.831518
	5893.00	10.71	259.85	5807.62	894.78	-253.06	-894.56	0.20	1395396.01	3186114.00	40.416838	-104.831580
	5985.00	11.39	260.27	5897.91	912.16	-256.10	-911.93	0.74	1395392.83	3186096.65	40.416830	-104.831642
	6080.00	11.10	260.54	5989.09	930.42	-259.19	-930.20	0.31	1395389.61	3186078.41	40.416821	-104.831708
	6172.00	10.94	259.28	6081.39	947.74	-262.27	-947.51	0.31	1395386.40	3186061.12	40.416813	-104.831770
	6266.00	11.25	260.49	6173.63	965.55	-265.45	-965.32	0.41	1395383.09	3186043.34	40.416804	-104.831834
	6359.00	10.95	260.86	6264.89	983.22	-268.35	-982.99</					

Comments	MD (ft)	Incl (°)	Azim True (°)	TVD (ft)	VSEC (ft)	NS (ft)	EW (ft)	DLS (°/100ft)	Northing (ftUS)	Easting (ftUS)	Latitude (°)	Longitude (°)
	6639.00	28.11	261.94	6530.46	1067.59	-278.69	-1067.34	8.68	1395369.07	3185941.42	40.416768	-104.832200
	6733.00	35.38	260.07	6610.35	1116.39	-286.50	-1116.14	7.80	1395360.89	3185892.69	40.416747	-104.832375
	6826.00	42.81	258.29	6682.47	1173.94	-297.57	-1173.69	8.08	1395349.39	3185835.23	40.416716	-104.832582
	6920.00	51.22	261.05	6746.51	1241.55	-309.78	-1241.28	9.20	1395336.67	3185767.73	40.416683	-104.832825
	7013.00	58.54	260.94	6799.98	1316.64	-321.68	-1316.36	7.87	1395324.20	3185692.75	40.416650	-104.833094
	7108.00	65.70	262.12	6844.38	1399.66	-334.01	-1399.37	7.62	1395311.24	3185609.84	40.416616	-104.833392
	7202.00	72.19	262.42	6878.13	1486.55	-345.80	-1486.25	6.91	1395298.79	3185523.05	40.416584	-104.833705
	7294.00	79.18	263.16	6900.86	1574.94	-356.97	-1574.63	7.64	1395286.95	3185434.76	40.416553	-104.834022
	7388.00	87.90	263.64	6911.43	1667.65	-367.69	-1667.33	9.29	1395275.53	3185342.15	40.416524	-104.834355
	7481.00	88.38	263.71	6914.45	1760.04	-377.93	-1759.71	0.52	1395264.59	3185249.85	40.416495	-104.834687
	7573.00	88.28	264.95	6917.13	1851.56	-387.02	-1851.22	1.35	1395254.81	3185158.42	40.416470	-104.835015
	7666.00	88.44	265.44	6919.79	1944.20	-394.81	-1943.86	0.55	1395246.33	3185065.85	40.416449	-104.835348
	7759.00	88.31	264.75	6922.43	2036.83	-402.76	-2036.48	0.75	1395237.68	3184973.29	40.416427	-104.835681
	7851.00	89.34	264.97	6924.31	2128.45	-411.00	-2128.09	1.14	1395228.74	3184881.75	40.416405	-104.836010
	7945.00	90.04	267.34	6924.82	2222.23	-417.30	-2221.87	2.63	1395221.73	3184788.03	40.416387	-104.836346
	8038.00	90.35	269.41	6924.51	2315.19	-419.94	-2314.82	2.25	1395218.39	3184695.10	40.416380	-104.836680
	8131.00	90.23	268.96	6924.03	2408.18	-421.26	-2407.81	0.50	1395216.36	3184602.12	40.416376	-104.837014
	8223.00	90.18	268.85	6923.71	2500.16	-423.02	-2499.80	0.13	1395213.91	3184510.16	40.416372	-104.837344
	8316.00	90.15	268.84	6923.44	2593.15	-424.89	-2592.78	0.03	1395211.33	3184417.20	40.416366	-104.837678
	8410.00	90.36	269.83	6923.02	2687.14	-425.98	-2686.77	1.08	1395209.53	3184323.23	40.416363	-104.838016
	8503.00	90.51	269.77	6922.31	2780.14	-426.31	-2779.76	0.17	1395208.50	3184230.24	40.416362	-104.838350
	8597.00	89.86	269.36	6922.01	2874.13	-427.02	-2873.76	0.82	1395207.07	3184136.25	40.416360	-104.838687
	8689.00	90.06	269.68	6922.07	2966.13	-427.79	-2965.76	0.41	1395205.60	3184044.27	40.416358	-104.839018
	8782.00	89.65	269.22	6922.31	3059.13	-428.68	-3058.75	0.66	1395204.01	3183951.29	40.416356	-104.839352
	8875.00	89.69	268.86	6922.84	3152.11	-430.24	-3151.74	0.39	1395201.75	3183858.32	40.416351	-104.839686
	8969.00	89.74	269.10	6923.10	3246.10	-431.92	-3245.72	0.26	1395199.36	3183764.36	40.416347	-104.840023
	9062.00	90.02	270.23	6923.51	3339.09	-432.46	-3338.72	1.25	1395198.11	3183671.37	40.416345	-104.840357
	9156.00	89.95	270.21	6923.53	3433.09	-432.10	-3432.72	0.08	1395197.76	3183577.37	40.416346	-104.840695
	9249.00	89.76	269.16	6923.77	3526.09	-432.61	-3525.71	1.15	1395196.55	3183484.39	40.416345	-104.841029
	9342.00	89.81	269.13	6924.12	3619.08	-434.00	-3618.70	0.06	1395194.45	3183391.42	40.416341	-104.841363
	9435.00	89.82	269.58	6924.42	3712.08	-435.04	-3711.70	0.48	1395192.70	3183298.44	40.416338	-104.841697
	9529.00	89.83	269.47	6924.70	3806.07	-435.82	-3805.69	0.12	1395191.21	3183204.45	40.416336	-104.842034
	9621.00	91.01	271.01	6924.03	3898.06	-435.44	-3897.69	2.11	1395190.90	3183112.46	40.416337	-104.842365
	9714.00	90.17	270.33	6923.07	3991.05	-434.35	-3990.67	1.16	1395191.28	3183019.47	40.416340	-104.842699
	9807.00	89.42	270.16	6923.40	4084.05	-433.95	-4083.67	0.83	1395190.98	3182926.48	40.416341	-104.843032
	9900.00	89.67	269.84	6924.14	4177.04	-433.95	-4176.67	0.44	1395190.27	3182833.49	40.416341	-104.843366
	9993.00	89.50	270.30	6924.82	4270.04	-433.84	-4269.66	0.53	1395189.68	3182740.50	40.416341	-104.843700
	10085.00	89.07	269.21	6925.96	4362.03	-434.23	-4361.66	1.27	1395188.59	3182648.52	40.416340	-104.844031
	10179.00	89.14	269.85	6927.43	4456.02	-435.00	-4455.64	0.68	1395187.11	3182554.54	40.416338	-104.844368
	10272.00	88.76	269.12	6929.14	4549.00	-435.84	-4548.62	0.88	1395185.57	3182461.58	40.416336	-104.844702
	10366.00	89.09	269.76	6930.86	4640.98	-436.74	-4640.60	0.78	1395183.97	3182369.61	40.416333	-104.845033
	10456.00	90.00	270.21	6931.59	4732.97	-436.76	-4732.59	1.10	1395183.25	3182277.62	40.416333	-104.845363
	10550.00	89.98	269.94	6931.61	4826.97	-436.64	-4826.59	0.29	1395182.66	3182183.63	40.416333	-104.845701
	10643.00	90.03	269.84	6931.60	4919.97	-436.82	-4919.59	0.12	1395181.78	3182090.64	40.416333	-104.846034
	10735.00	89.63	269.13	6931.87	5011.97	-437.64	-5011.59	0.89	1395180.26	3181998.65	40.416330	-104.846365
	10828.00	89.72	269.45	6932.40	5104.96	-438.80	-5104.58	0.36	1395178.40	3181905.68	40.416327	-104.846699
	10921.00	89.52	269.00	6933.02	5197.95	-440.06	-5197.57	0.53	1395176.44	3181812.71	40.416324	-104.847033
	11014.00	89.68	269.00	6933.67	5290.94	-441.68	-5290.55	0.17	1395174.11	3181719.74	40.416319	-104.847367
	11107.00	89.61	269.68	6934.24	5383.93	-442.75	-5383.54	0.74	1395172.34	3181626.76	40.416316	-104.847701
	11200.00	89.93	270.52	6934.62	5476.93	-442.59	-5476.54	0.97	1395171.79	3181533.77	40.416316	-104.848035
	11292.00	89.88	270.57	6934.77	5568.92	-441.71	-5568.54	0.08	1395171.97	3181441.77	40.416319	-104.848365
	11385.00	89.81	270.29	6935.02	5661.92	-441.01	-5661.54	0.31	1395171.97	3181348.78	40.416321	-104.848699
	11478.00	89.98	270.41	6935.19	5754.92	-440.45	-5754.53	0.22	1395171.83	3181255.78	40.416322	-104.849033
	11572.00	89.86	270.34	6935.32	5848.91	-439.83	-5848.53	0.15	1395171.73	3181161.79	40.416324	-104.849371
	11668.00	90.03	270.29	6935.42	5944.91	-439.30	-5944.53	0.18	1395171.53	3181065.79	40.416325	-104.849715
	11760.00	89.83	270.14	6935.53	6036.91	-438.96	-6036.53	0.27	1395171.18	3180973.80	40.416326	-104.850046
	11853.00	89.91	270.07	6935.74	6129.91	-438.79	-6129.53	0.11	1395170.65	3180880.80	40.416326	-104.850380
	11946.00	89.75	268.37	6936.02	6222.90	-440.05	-6222.52	1.84	1395168.68	3180787.83	40.416323	-104.850714
	12041.00	89.99	269.49	6936.23	6317.88	-441.83	-6317.50	1.21	1395166.18	3180692.87	40.416318	-104.851055
	12134.00	90.04	269.56	6936.21	6410.88	-442.60	-6410.49	0.09	1395164.71	3180599.88	40.416316	-104.851389
	12227.00	89.85	268.16	6936.30	6503.86	-444.45	-6503.47	1.52	1395162.15	3180506.93	40.416311	-104.851723
	12321.00	89.49	268.02	6936.84	6597.81	-447.58	-6597.42	0.41	1395158.31	3180413.01	40.416302	-104.852060
	12416.00	89.95	269.07	6937.30	6692.78	-449.99	-6692.39	1.21	1395155.18	3180318.07	40.416295	-104.852401
	12509.00	89.97	269.23	6937.37	6785.77	-451.37	-6785.38	0.17	1395153.10	3180225.09	40.416291	-104.852735
	12602.00	89.73	269.59	6937.61	6878.76	-452.33	-6878.37	0.47	1395151.43	3180132.11	40.416289	-104.853069
	12696.00	90.04	269.75	6937.80	6972.76	-452.87	-6972.37	0.37	1395150.18	3180038.13	40.416287	-104.853406
	12788.00	89.83	269.66	6937.90	7064.76	-453.35	-7064.37	0.25	1395149.01	3179946.14	40.416286	-104.853737
	12879.00	89.79	268.24	6938.52	7251.73	-456.77	-7251.33	0.76	1395144.17	3179759.21	40.416276	-104.854408
	13070.00	90.20	269.65	6938.53	7346.71	-458.52	-7346.31	1.55	1395141.70	3179664.25	40.416271	-104.854749
	13163.00	90.57	269.88	6937.91	7439.71	-458.90	-7439.31	0.47	1395140.61	3179571.27	40.416270	-104.855083
	13256.00	90.33	270.16	6937.18	7532.70	-458.87	-7532.31	0.40	1395139.94	3179478.27	40.416270	-104.855417
	13349.00	90.39	270.60	6936.59	7625.70	-458.25	-7625.30	0.48	1395139.85	3179385.28	40.416272	-104.855751
	13442.00	90.27	269.30	6936.06	7718.69	-458.34	-7718.30	1.40	1395139.07	3179292.29	40.416272	-104.856085
	13534.00	90.41	270.26	6935.51	7810.69	-458.69	-7810.29	1.05	1395138.02	3179200.30	40.416271	-104.856416
	13627.00	90.47	269.64	6934.80	7903.69	-458.77	-7903.29	0.67	1395137.23	3179107.31	40.416270	-104.856750
	13720.00	89.97	269.45	6934.44	7996.69	-459.51	-7996.29	0.58	1395135.79	3179014.33	40.416268	-104.857084
	13814.00	89.87	269.43	6934.57	8090.68	-460.43	-8090.28	0.11	1395134.16	3178920.35	40.416266	-104.857421
	13906.00	90.28	270.95	6934.45	8							

Comments	MD (ft)	Incl (°)	Azim True (°)	TVD (ft)	VSEC (ft)	NS (ft)	EW (ft)	DLS (°/100ft)	Northing (ftUS)	Easting (ftUS)	Latitude (°)	Longitude (°)
Last SLB_MWD Survey	16877.00	90.43	269.98	6914.09	11153.19	-475.49	-11152.78	0.54	1395095.90	3175858.18	40.416221	-104.868419
Projection to Bit	16899.00	90.43	269.98	6913.93	11175.19	-475.50	-11174.78	0.00	1395095.73	3175836.18	40.416221	-104.868498

Survey Type: Def Survey

Survey Error Model: ISCWSA Rev 0 \*\*\* 3-D 95.000% Confidence 2.7955 sigma  
 Survey Program:

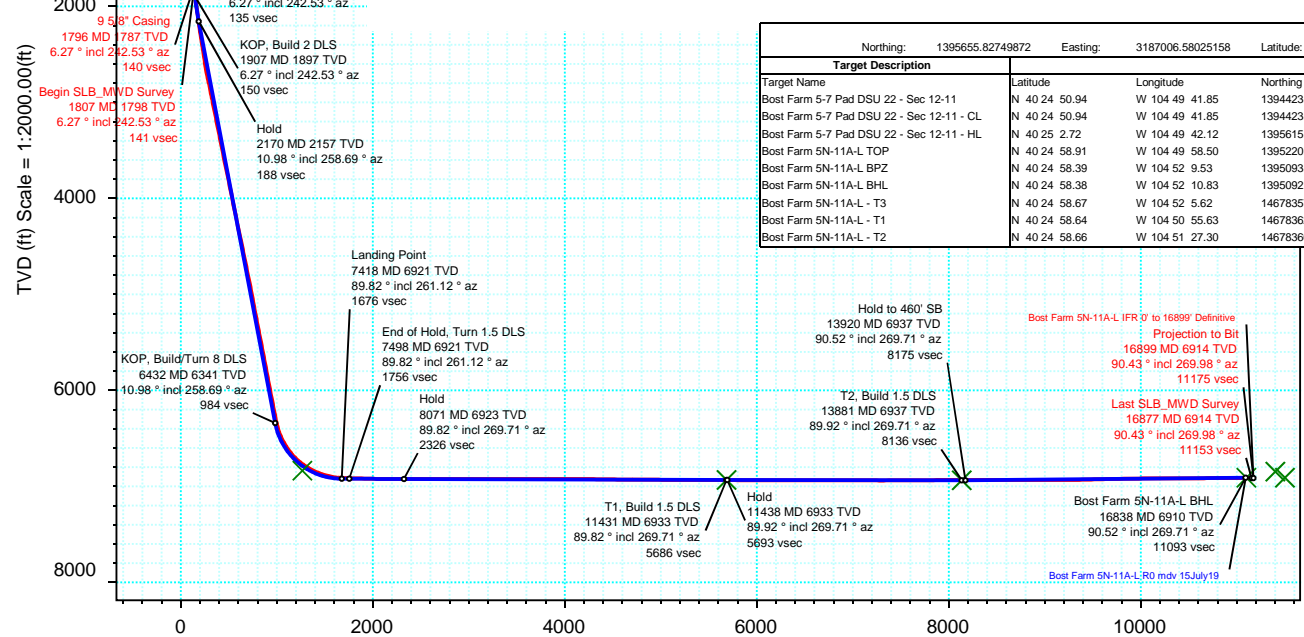
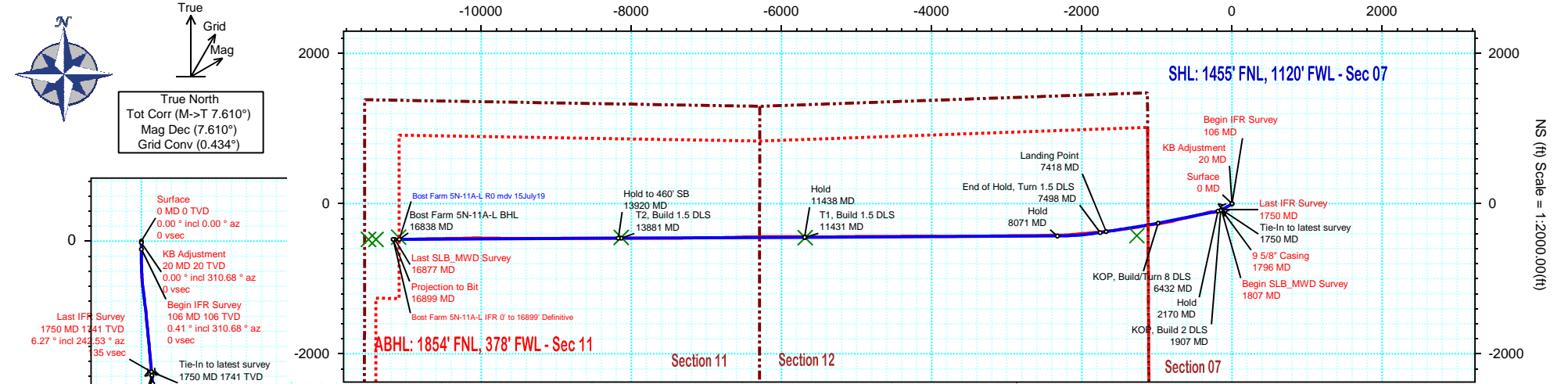
Description	Part	MD From (ft)	MD To (ft)	EOU Freq (ft)	Hole Size (in)	Casing Diameter (in)	Survey Tool Type	Borehole / Survey
	1	0.000	20.000	1/98.425	13.500	9.625	NAL_MWD_IFR1-Depth Only	Original Hole / Bost Farm 5N-11A-L IFR 0' to 16899' Definitive
	1	20.000	20.000	Act Stns	13.500	9.625	NAL_MWD_IFR1-Depth Only	Original Hole / Bost Farm 5N-11A-L IFR 0' to 16899' Definitive
	1	20.000	1796.000	Act Stns	13.500	9.625	NAL_MWD_IFR1	Original Hole / Bost Farm 5N-11A-L IFR 0' to 16899' Definitive
	1	1796.000	16899.000	Act Stns	8.500	5.500	NAL_MWD_IFR1+MS	Original Hole / Bost Farm 5N-11A-L IFR 0' to 16899' Definitive



<b>Borehole:</b> <b>Original Hole</b>	<b>Well:</b> <b>Bost Farm 5N-11A-L</b>	<b>Field:</b> <b>CO, Weld County (NAD 83 NZ) - SRC</b>	<b>Structure:</b> <b>SRC Energy 07-05N-66W (Bost Farm 5-7 Pad DSU 22)</b>
--	---	---	--

<b>Gravity &amp; Magnetic Parameters</b>		<b>Surface Location</b> NAD83 Colorado State Plane, Northern Zone, US Feet			<b>Miscellaneous</b>	
Model: Magvar IFR	Dip: 66.61°	Date: 15-Jul-2019	Lat: N 40 25 3.12	Northing: 1395655.83ftUS	Grid Conv: 0.434°	Slot: Bost Farm 5N-11A-L
MagDec: 7.61°	FS: 52247nT	Gravity FS: 999.025mgn (9.80665 Based)	Lon: W 104 49 42.12	Easting: 3187006.58ftUS	Scale Fact: 0.99996107	TVD Ref: KB 20ft(4898ft above MSL)
						Plan: Bost Farm 5N-11A-L IFR 0' to 16899' Definitive

## Final PVA



Target Description	Surface Location			Grid Coord		Local Coord	
	Northing	Easting	Latitude	Longitude	VSec	Local Coord	Local Coord
Bost Farm 5-7 Pad DSU 22 - Sec 12-11	N 40 24 50.94	W 104 49 41.85	1394423.60	3187036.52	4898.00	-1232.47	20.61
Bost Farm 5-7 Pad DSU 22 - Sec 12-11 - CL	N 40 24 50.94	W 104 49 41.85	1394423.60	3187036.52	4898.00	-1232.47	20.61
Bost Farm 5-7 Pad DSU 22 - Sec 12-11 - HL	N 40 25 2.72	W 104 49 42.12	1395615.75	3187006.61	4898.00	0.31	-40.07
Bost Farm 5N-11A-L TOP	N 40 24 58.91	W 104 49 58.50	1395220.77	3185742.64	6838.04	1267.62	-425.49
Bost Farm 5N-11A-L BPZ	N 40 24 58.39	W 104 52 9.53	1395093.43	3175608.84	6846.08	11402.59	-476.07
Bost Farm 5N-11A-L BHL	N 40 24 58.38	W 104 52 10.83	1395092.35	3175508.84	6910.40	11502.56	-476.39
Bost Farm 5N-11A-L - T3	N 40 24 58.67	W 104 52 5.62	14678357.23	1677094.67	6910.40	11099.67	-447.41
Bost Farm 5N-11A-L - T1	N 40 24 58.64	W 104 50 55.63	14678362.39	1682506.35	6933.40	5685.83	-452.76
Bost Farm 5N-11A-L - T2	N 40 24 58.66	W 104 51 27.30	14678360.05	1680057.44	6936.80	8135.72	-450.34

Critical Point	Critical Points						
	MD	INCL	AZIM	TVD	VSEC	N(+)/S(-)	E(+)/W(-)
Surface	0.00	0.00	0.00	0.00	0.00	0.00	0.00
KB Adjustment	20.00	0.00	310.68	20.00	0.00	0.00	0.00
Begin IFR Survey	106.00	0.41	310.68	106.00	0.23	0.20	-0.23
Last IFR Survey	1750.00	6.27	242.53	1740.87	135.23	-81.35	-135.16
9 5/8\" Casing	1796.00	6.27	242.53	1786.60	139.69	-83.67	-139.62
Begin SLB_MWD Survey	1807.00	6.27	242.53	1797.53	140.76	-84.22	-140.69
Last SLB_MWD Survey	16877.00	90.43	269.98	6914.09	11153.19	-475.49	-11152.78
Projection to Bit	16899.00	90.43	269.98	6913.93	11175.19	-475.50	-11174.78

Vertical Section (ft) Azim = 269.95° Scale = 1:2000.00(ft) Origin = 0N/-S, 0E/-W