

Bost Farm 5C-11-L IFR 0' to 17227' Definitive Survey Geodetic Report

(Def Survey)

Report Date: September 03, 2019 - 02:24 PM
Client: SRC Energy
Field: CO, Weld County (NAD 83 NZ) - SRC
Structure / Slot: SRC Energy 07-05N-66W (Bost Farm 5-7 Pad DSU 22) / Bost Farm 5C-11-L
Well: Bost Farm 5C-11-L
Borehole: Original Hole
UWI / API#: Unknown / 05-123-47661
Survey Name: Bost Farm 5C-11-L IFR 0' to 17227' Definitive
Survey Date: May 20, 2019
Tort / AHD / DDI / ERD Ratio: 248.148 ° / 11266.951 ft / 6.827 / 1.572
Coordinate Reference System: NAD83 Colorado State Plane, Northern Zone, US Feet
Location Lat / Long: N 40° 25' 2.92080", W 104° 49' 42.12120"
Location Grid N/E Y/X: N 1395635.792 ftUS, E 3187006.732 ftUS
CRS Grid Convergence Angle: 0.4340 °
Grid Scale Factor: 0.99996107
Version / Patch: 2.10.782.0

Survey / DLS Computation: Minimum Curvature / Lubinski
Vertical Section Azimuth: 266.640 ° (True North)
Vertical Section Origin: 0.000 ft, 0.000 ft
TVD Reference Datum: KB 20ft
TVD Reference Elevation: 4898.000 ft above MSL
Seabed / Ground Elevation: 4878.000 ft above MSL
Magnetic Declination: 7.610 °
Total Gravity Field Strength: 999.0246mgn (9.80665 Based)
Gravity Model: GARM
Total Magnetic Field Strength: 52249.000 nT
Magnetic Dip Angle: 66.610 °
Declination Date: June 07, 2019
Magnetic Declination Model: Magvar IFR
North Reference: True North
Grid Convergence Used: 0.0000 °
Total Corr Mag North-True North: 7.6100 °
Local Coord Referenced To: Well Head

Comments	MD (ft)	Incl (°)	Azim True (°)	TVD (ft)	VSEC (ft)	NS (ft)	EW (ft)	DLS ("/100ft)	Northing (ftUS)	Easting (ftUS)	Latitude (°)	Longitude (°)
Surface	0.00	0.00	0.00	0.00	0.00	0.00	0.00	N/A	1395635.79	3187006.73	40.417478	-104.828367
KB Adjustment	20.00	0.00	87.79	20.00	0.00	0.00	0.00	0.00	1395635.79	3187006.73	40.417478	-104.828367
Begin IFR Survey	106.00	0.24	87.79	106.00	-0.18	0.01	0.18	0.28	1395635.80	3187006.91	40.417478	-104.828366
	191.00	0.37	115.77	191.00	-0.60	-0.11	0.61	0.23	1395635.69	3187007.34	40.417478	-104.828365
	281.00	0.55	204.82	281.00	-0.65	-0.62	0.69	0.73	1395635.17	3187007.42	40.417476	-104.828365
	370.00	1.78	215.96	369.98	0.43	-2.13	-0.31	1.40	1395633.66	3187006.44	40.417472	-104.828368
	460.00	3.88	223.77	459.86	3.55	-5.46	-3.23	2.37	1395630.31	3187003.54	40.417463	-104.828379
	550.00	5.42	233.78	549.56	9.35	-10.17	-8.77	1.93	1395625.55	3186998.04	40.417450	-104.828398
	640.00	7.47	225.90	638.99	17.35	-16.76	-16.40	2.48	1395618.91	3186990.46	40.417432	-104.828426
	730.00	7.90	225.93	728.18	26.48	-25.13	-25.05	0.48	1395610.47	3186981.88	40.417409	-104.828457
	820.00	8.30	226.18	817.29	36.11	-33.93	-34.18	0.45	1395601.61	3186972.81	40.417385	-104.828490
	910.00	7.75	223.86	906.40	45.50	-42.80	-43.07	0.71	1395592.67	3186963.99	40.417361	-104.828522
	1000.00	7.38	226.75	995.62	54.39	-51.14	-51.48	0.59	1395584.27	3186955.64	40.417338	-104.828552
	1090.00	7.25	222.93	1084.89	62.93	-59.26	-59.56	0.56	1395576.09	3186947.62	40.417315	-104.828581
	1180.00	7.48	227.32	1174.15	71.57	-67.39	-67.74	0.68	1395567.90	3186939.51	40.417293	-104.828610
	1270.00	8.41	231.38	1263.28	81.48	-75.47	-77.19	1.21	1395559.75	3186930.12	40.417271	-104.828644
	1360.00	8.43	232.39	1352.31	92.30	-83.60	-87.55	0.17	1395551.54	3186919.82	40.417249	-104.828681
	1450.00	7.51	231.97	1441.44	102.59	-91.25	-97.41	1.02	1395543.81	3186910.02	40.417228	-104.828717
	1540.00	7.94	234.49	1530.63	112.69	-98.48	-107.11	0.61	1395536.50	3186900.38	40.417208	-104.828752
	1630.00	7.87	233.24	1619.77	123.10	-105.78	-117.10	0.21	1395529.13	3186890.44	40.417188	-104.828788
	1720.00	7.51	233.56	1708.96	133.17	-112.96	-126.77	0.40	1395521.88	3186880.83	40.417168	-104.828822
Last IFR Survey 9 5/8" Casing Begin	1790.00	7.74	236.41	1738.70	136.56	-115.24	-130.03	1.48	1395519.57	3186877.58	40.417162	-104.828834
SLB_MWD Survey	1798.00	7.86	237.62	1786.25	142.22	-118.79	-135.49	0.42	1395515.98	3186872.15	40.417152	-104.828854
	1869.00	8.04	239.34	1856.57	150.88	-123.92	-143.86	0.42	1395510.79	3186863.82	40.417138	-104.828884
	1965.00	8.27	242.07	1951.60	163.12	-130.58	-155.74	0.47	1395504.04	3186851.99	40.417120	-104.828926
	2061.00	10.09	243.63	2046.37	177.14	-137.55	-169.37	1.91	1395496.97	3186838.31	40.417100	-104.828975
	2155.00	10.15	235.57	2138.91	191.82	-145.89	-183.58	1.51	1395488.52	3186824.27	40.417078	-104.829026
	2249.00	10.28	239.17	2231.42	206.36	-154.87	-197.62	0.69	1395479.43	3186810.30	40.417053	-104.829077
	2343.00	10.54	231.80	2323.88	220.85	-164.49	-211.58	1.44	1395469.71	3186796.42	40.417026	-104.829127
	2436.00	10.37	235.46	2415.33	235.00	-174.49	-225.16	0.74	1395459.61	3186782.91	40.416999	-104.829176
	2532.00	9.89	240.66	2509.84	249.80	-183.43	-239.46	1.08	1395450.56	3186768.68	40.416974	-104.829227
	2628.00	10.42	236.40	2604.34	264.71	-192.28	-253.88	0.96	1395441.61	3186754.33	40.416950	-104.829279
	2723.00	10.38	240.69	2697.78	279.83	-201.22	-268.50	0.82	1395432.55	3186739.78	40.416926	-104.829331
	2816.00	10.21	240.22	2789.28	294.74	-209.41	-282.96	0.20	1395424.25	3186725.38	40.416903	-104.829383
	2909.00	9.77	243.49	2880.87	309.38	-217.03	-297.17	0.77	1395416.53	3186711.22	40.416882	-104.829434
	3002.00	9.99	237.59	2972.49	323.69	-224.88	-311.04	1.11	1395408.58	3186697.41	40.416861	-104.829484
	3096.00	9.99	245.73	3065.07	338.43	-232.60	-325.36	1.50	1395400.75	3186683.16	40.416840	-104.829535
	3188.00	9.89	239.25	3155.69	352.90	-239.92	-339.43	1.22	1395393.32	3186669.15	40.416819	-104.829586
	3281.00	9.13	243.58	3247.42	366.78	-247.28	-352.90	1.12	1395385.85	3186655.73	40.416799	-104.829634
	3376.00	9.10	239.24	3341.22	380.39	-254.48	-366.10	0.72	1395378.56	3186642.58	40.416779	-104.829682
	3469.00	9.66	238.59	3432.97	393.80	-262.31	-379.08	0.61	1395370.63	3186629.66	40.416758	-104.829728
	3564.00	9.41	237.14	3526.66	407.60	-270.68	-392.41	0.36	1395362.16	3186616.10	40.416735	-104.829776
	3657.00	9.34	236.96	3618.42	420.77	-278.92	-405.12	0.08	1395353.83	3186603.75	40.416712	-104.829822
	3751.00	10.08	231.52	3711.07	434.13	-288.19	-417.96	1.25	1395344.45	3186590.99	40.416687	-104.829868
	3844.00	9.97	227.34	3802.66	447.02	-298.71	-430.25	0.79	1395333.84	3186578.78	40.416668	-104.829912
	3937.00	10.04	236.71	3894.25	460.27	-308.62	-442.94	1.75	1395323.84	3186566.16	40.416631	-104.829958
	4030.00	9.78	234.80	3985.86	474.01	-317.62	-456.18	0.45	1395314.74	3186552.99	40.416606	-104.830005
	4122.00	9.86	228.72	4076.51	486.86	-327.32	-468.48	1.13	1395304.94	3186540.40	40.416580	-104.830049
	4216.00	9.95	237.22	4169.12	500.28	-337.03	-481.36	1.56	1395295.14	3186527.96	40.416553	-104.830096
	4310.00	9.74	238.82	4261.73	514.39	-345.54	-494.99	0.37	1395286.52	3186514.40	40.416530	-104.830145
	4403.00	10.51	237.19	4353.29	528.73	-354.21	-508.85	0.88	1395277.75	3186500.60	40.416506	-104.830194
	4496.00	10.40	243.72	4444.74	543.85	-362.53	-523.50	1.28	1395269.33	3186486.01	40.416483	-104.830247
	4589.00	10.14	237.69	4536.26	558.75	-370.62	-537.95	1.19	1395261.13	3186471.63	40.416461	-104.830299
	4681.00	10.23	236.62	4626.81	572.91	-379.44	-551.62	0.23	1395252.20	3186458.03	40.416436	-104.830348
	4774.00	10.64	242.72	4718.27	587.91	-387.92	-566.14	1.27	1395243.61	3186443.57	40.416413	-104.830400
	4868.00	10.28	234.26	4810.72	602.92	-396.80	-580.66	1.68	1395234.62	3186429.11	40.416389	-104.830452
	4960.00	10.16	236.48	4901.26	616.87	-406.07	-594.09	0.45	1395225.25	3186415.76	40.416363	-104.830501
	5054.00	10.29	236.68	4993.76	631.31	-415.26	-608.02	0.14	1395215.95	3186401.90	40.416338	-104.830551
	5146.00	10.16	233.23	5084.30	645.21	-424.64	-621.39	0.68	1395206.48	3186388.60	40.416312	-104.830599
	5239.00	10.32	235.81	5175.82	659.21	-434.23	-634.85	0.52	1395196.79	3186375.22	40.416286	-104.830647
	5332.00	10.49	241.73	5267.30	674.04	-442.92	-649.20	1.16	1395187.99	3186360.94	40.416262	-104.830698
	5426.00	10.18	240.47	5359.77	689.25	-451.06	-663.96	0.41	1395179.73	3186346.24	40.416240	-104.830751
	5519.00	10.07	237.10	5451.32	703.70	-459.53	-677.94	0.65	1395171.16	3186332.32	40.416217	-104.830802
	5611.00	10.50	236.56	5541.84	717.96	-468.52	-691.69	0.48	1395162.07	3186318.64	40.416192	-104.830851
	5705.00	10.11	241.09	5634.33	732.81	-477.23	-706.06	0.96	1395153.25	3186304.34	40.416168	-104.830903
	5798.00	10.25	240.73	5725.87	747.62	-485.22	-720.42	0.17	1395145.15	3186290.04	40.416146	-104.830954
	5891.00	9.94	235.07	5817.43	761.90	-493.86	-734.22	1.12	1395136.40	3186276.31	40.416122	-104.831004
	5985.00	9.17	237.98	5910.12	775.39	-502.48	-747.22	0.97	1395127.69	3186262.37	40.416099	-104.831050
	6077.00	5.23	242.22	6001.38	785.64	-508.32	-757.15	4.32	1395121.77	3186253.49	40.416083	-104.831086
	6172.00	2.28	242.37	6096.17	791.31	-511.22	-762.66	3.11	1395118.83	3186248.00	40.416075	-104.831100
	6265.00	0.35	51.57	6189.14	792.76	-511.90	-764.07	2.82	1395118.14	3186246.59	40.416073	-104.831111
	6359.00	0.26	42.59	6283.14	792.37	-511.56	-763.70	0.11	1395118.48	3186246.96	40.416074	-104.831110
	6452.00	0.32	31.98	6376.14	792.07							

Comments	MD (ft)	Incl (°)	Azim True (°)	TVD (ft)	VSEC (ft)	NS (ft)	EW (ft)	DLS (°/100ft)	Northing (ftUS)	Easting (ftUS)	Latitude (°)	Longitude (°)
	6732.00	21.56	264.09	6648.95	846.87	-518.12	-817.91	6.62	1395111.51	3186192.80	40.416056	-104.831304
	6826.00	27.80	262.46	6734.32	886.03	-522.78	-856.86	6.68	1395106.56	3186153.89	40.416043	-104.831444
	6919.00	35.16	265.28	6813.58	934.50	-527.84	-905.12	8.07	1395101.14	3186105.68	40.416029	-104.831617
	7013.00	41.66	262.61	6887.21	992.78	-534.09	-963.14	7.14	1395094.44	3186047.71	40.416012	-104.831826
	7107.00	48.73	261.76	6953.41	1059.23	-543.18	-1029.16	7.55	1395084.85	3185981.75	40.415987	-104.832063
	7200.00	55.66	261.55	7010.38	1132.39	-553.85	-1101.82	7.45	1395073.64	3185909.18	40.415958	-104.832324
	7293.00	62.34	262.09	7058.25	1211.78	-565.17	-1180.68	7.20	1395061.72	3185830.41	40.415927	-104.832607
	7386.00	71.94	262.32	7094.34	1297.12	-576.77	-1265.49	10.33	1395049.47	3185745.70	40.415895	-104.832912
	7479.00	81.59	260.44	7115.60	1387.15	-590.35	-1354.88	10.56	1395035.22	3185656.42	40.415857	-104.833233
	7572.00	82.47	260.31	7128.50	1478.70	-605.75	-1445.68	0.96	1395019.13	3185565.74	40.415815	-104.833559
	7664.00	87.98	260.26	7136.15	1569.78	-621.22	-1536.02	5.99	1395002.98	3185475.53	40.415773	-104.833883
	7758.00	89.36	261.80	7138.34	1663.30	-635.87	-1628.84	2.20	1394987.63	3185382.82	40.415732	-104.834217
	7851.00	89.30	263.10	7139.42	1756.05	-648.09	-1721.02	1.40	1394974.71	3185290.74	40.415689	-104.834548
	7943.00	89.10	264.81	7140.71	1847.93	-657.78	-1812.50	1.87	1394964.33	3185199.34	40.415672	-104.834876
	8036.00	90.31	265.42	7141.19	1940.90	-665.69	-1905.16	1.46	1394955.71	3185106.75	40.415651	-104.835209
	8128.00	90.10	267.54	7140.86	2032.89	-671.34	-1996.98	2.32	1394949.37	3185014.98	40.415635	-104.835539
	8222.00	90.26	269.84	7140.56	2126.82	-673.49	-2090.95	2.45	1394946.51	3184921.03	40.415629	-104.835876
	8316.00	90.35	268.96	7140.06	2220.71	-674.48	-2184.94	0.94	1394944.81	3184827.05	40.415626	-104.836214
	8409.00	90.00	269.21	7139.78	2313.63	-675.96	-2277.93	0.46	1394942.63	3184734.08	40.415622	-104.836548
	8502.00	90.29	269.17	7139.54	2406.54	-677.28	-2370.92	0.31	1394940.61	3184641.11	40.415619	-104.836881
	8595.00	90.11	269.49	7139.22	2499.43	-678.36	-2463.91	0.39	1394938.81	3184548.13	40.415616	-104.837215
	8687.00	89.91	269.94	7139.20	2591.30	-678.82	-2555.91	0.54	1394937.66	3184456.14	40.415614	-104.837546
	8780.00	90.31	269.95	7139.02	2684.14	-678.91	-2648.91	0.43	1394936.87	3184363.15	40.415614	-104.837880
	8874.00	90.33	269.96	7138.50	2777.99	-678.98	-2742.91	0.02	1394936.08	3184269.16	40.415614	-104.838217
	8968.00	90.07	269.36	7138.17	2871.85	-679.54	-2836.90	0.70	1394934.81	3184175.17	40.415612	-104.838555
	9061.00	90.06	269.56	7138.07	2964.74	-680.42	-2929.90	0.22	1394933.23	3184082.19	40.415610	-104.838889
	9154.00	90.24	269.81	7137.82	3057.61	-680.93	-3022.90	0.33	1394932.01	3183989.20	40.415608	-104.839223
	9247.00	89.88	269.31	7137.72	3150.49	-681.64	-3115.89	0.66	1394930.80	3183896.22	40.415606	-104.839557
	9341.00	90.12	269.68	7137.72	3244.37	-682.47	-3209.89	0.47	1394929.06	3183802.23	40.415604	-104.839894
	9434.00	90.14	269.67	7137.51	3337.24	-683.00	-3302.89	0.02	1394927.82	3183709.25	40.415603	-104.840228
	9527.00	90.22	270.38	7137.22	3430.08	-682.96	-3395.89	0.77	1394927.16	3183616.25	40.415603	-104.840562
	9619.00	90.03	270.00	7137.02	3521.90	-682.65	-3487.89	0.46	1394926.77	3183524.26	40.415604	-104.840893
	9711.00	89.95	269.74	7137.04	3613.75	-682.86	-3579.89	0.30	1394925.86	3183432.27	40.415603	-104.841223
	9805.00	90.38	270.53	7136.77	3707.58	-682.64	-3673.88	0.96	1394925.37	3183338.27	40.415603	-104.841561
	9898.00	89.81	269.98	7136.61	3800.39	-682.23	-3766.88	0.85	1394925.08	3183245.28	40.415605	-104.841895
	9990.00	90.40	269.65	7136.44	3892.25	-682.52	-3858.88	0.73	1394924.09	3183153.29	40.415604	-104.842225
	10084.00	90.87	270.47	7135.40	3986.08	-682.43	-3952.87	1.01	1394923.47	3183059.30	40.415604	-104.842563
	10177.00	90.67	270.17	7134.15	4078.88	-681.91	-4046.86	0.39	1394923.29	3182966.31	40.415605	-104.842897
	10269.00	90.18	270.21	7133.47	4170.70	-681.60	-4137.86	0.53	1394922.90	3182874.32	40.415606	-104.843227
	10362.00	90.11	270.26	7133.23	4263.51	-681.22	-4230.86	0.09	1394922.58	3182781.33	40.415607	-104.843561
	10454.00	90.15	270.04	7133.03	4355.34	-680.98	-4322.86	0.24	1394922.12	3182689.33	40.415608	-104.843891
	10547.00	90.05	270.02	7132.86	4448.18	-680.93	-4415.86	0.11	1394921.46	3182596.34	40.415608	-104.844225
	10640.00	90.42	270.72	7132.48	4540.98	-680.33	-4508.86	0.85	1394921.36	3182503.34	40.415609	-104.844559
	10733.00	89.99	270.19	7132.15	4633.77	-679.59	-4601.85	0.73	1394921.39	3182410.35	40.415611	-104.844893
	10826.00	90.21	270.18	7131.99	4726.59	-679.29	-4694.85	0.24	1394920.99	3182317.35	40.415612	-104.845227
	10919.00	90.02	270.25	7131.80	4819.41	-678.94	-4787.85	0.22	1394920.63	3182224.36	40.415613	-104.845561
	11012.00	90.39	270.65	7131.47	4912.21	-678.21	-4880.85	0.59	1394920.66	3182131.36	40.415615	-104.845895
	11104.00	90.05	269.76	7131.11	5004.03	-677.88	-4972.84	1.04	1394920.29	3182039.37	40.415616	-104.846226
	11198.00	90.08	270.86	7131.01	5097.83	-677.37	-5066.84	1.17	1394920.09	3181945.37	40.415617	-104.846563
	11290.00	89.57	269.57	7131.29	5189.65	-677.03	-5158.84	1.51	1394919.74	3181853.38	40.415618	-104.846893
	11383.00	89.83	268.93	7131.78	5282.55	-678.25	-5251.83	0.74	1394917.82	3181760.41	40.415615	-104.847227
	11477.00	90.99	269.92	7131.10	5376.44	-679.19	-5345.82	1.62	1394916.16	3181666.43	40.415612	-104.847565
	11573.00	90.87	270.07	7129.54	5472.26	-679.20	-5441.81	0.20	1394915.43	3181570.45	40.415612	-104.847910
	11669.00	90.88	270.69	7128.08	5568.04	-678.56	-5537.79	0.65	1394915.34	3181474.47	40.415614	-104.848254
	11761.00	90.41	269.54	7127.04	5659.87	-678.38	-5629.78	1.35	1394914.82	3181382.48	40.415614	-104.848585
	11854.00	89.80	269.66	7126.87	5752.74	-679.03	-5722.78	0.67	1394913.47	3181289.49	40.415612	-104.848919
	11947.00	89.71	269.78	7127.27	5845.61	-679.48	-5815.78	0.16	1394912.31	3181196.50	40.415611	-104.849253
	12042.00	90.64	270.96	7126.98	5940.40	-678.87	-5910.77	1.58	1394912.20	3181101.51	40.415613	-104.849594
	12135.00	90.41	270.39	7126.13	6033.17	-677.77	-6003.76	0.66	1394912.60	3181008.52	40.415616	-104.849928
	12229.00	89.93	270.65	7125.85	6126.95	-676.92	-6097.76	0.58	1394912.74	3180914.53	40.415618	-104.850265
	12323.00	89.98	269.45	7125.92	6220.78	-676.84	-6191.76	1.28	1394912.11	3180820.53	40.415618	-104.850603
	12417.00	89.76	269.50	7126.14	6314.67	-677.70	-6285.75	0.24	1394910.53	3180726.55	40.415616	-104.850940
	12503.00	89.63	269.12	7127.13	6500.46	-679.94	-6471.74	0.22	1394906.89	3180540.60	40.415609	-104.851608
	12696.00	89.16	268.55	7128.11	6593.39	-681.83	-6564.71	0.79	1394904.29	3180447.64	40.415604	-104.851942
	12789.00	89.53	269.27	7129.17	6686.31	-683.60	-6657.69	0.87	1394901.82	3180354.69	40.415599	-104.852276
	12883.00	89.54	268.82	7129.93	6780.22	-685.16	-6751.67	0.48	1394899.54	3180260.72	40.415595	-104.852614
	12977.00	88.37	268.49	7131.65	6874.15	-687.37	-6845.63	1.29	1394896.62	3180166.79	40.415589	-104.852951
	13071.00	86.80	269.60	7135.61	6967.98	-688.94	-6939.53	2.04	1394894.35	3180072.91	40.415584	-104.853288
	13164.00	84.39	270.17	7142.75	7060.54	-689.12	-7032.24	2.66	1394893.46	3179980.20	40.415584	-104.853621
	13257.00	83.97	269.60	7152.18	7152.92	-689.31	-7124.76	0.76	1394892.57	3179887.68	40.415583	-104.853954
	13349.00	84.99	266.94	7161.03	7244.44	-692.07	-7216.29	3.08	1394889.11	3179796.19	40.415575	-104.854282
	13442.00	87.86	265.06	7166.83	7337.24	-698.55	-7308.86	3.69	1394881.33	3179703.67	40.415558	-104.854615
	13535.00	91.37	268.50	7167.46	7430.21	-703.77	-7401.69	5.28	1394876.01	3179610.89	40.415543	-104.854948
	13628.00	91.55	269.02	7165.09	7523.12	-705.78	-7494.64	0.59	1394873.29	3179517.96	40.415538	-104.855282
	13721.00	91.50	269.88	7162.61	7615.97	-706.68	-7587.60	0.93	1394871.70	3179425.02	40.415535	-104.855616
	13814.00	91.55	268.95	7160.14	7708.83	-707.63	-7680.56	1.00	1394870.04	3179332.07	40.415532	-104.855949
	13907.00	91.38	268.80	7157.76	7801.73	-709.45	-7773.51	0.24	1394867.52	3179239.14	40.415527	-104.856283
	14000.00	91.50	269.02	7155.42	7894.6							

Comments	MD (ft)	Incl (°)	Azim True (°)	TVD (ft)	VSEC (ft)	NS (ft)	EW (ft)	DLS (°/100ft)	Northing (ftUS)	Easting (ftUS)	Latitude (°)	Longitude (°)
	16970.00	89.59	267.68	7112.81	10860.86	-754.76	-10835.25	0.37	1394799.02	3176177.95	40.415400	-104.867279
	17063.00	89.68	268.43	7113.40	10953.83	-757.92	-10928.20	0.81	1394795.16	3176085.03	40.415391	-104.867612
	17157.00	89.13	266.77	7114.37	11047.81	-761.85	-11022.11	1.86	1394790.51	3175991.16	40.415380	-104.867950
Last SLB_MWD Survey	17205.00	89.69	267.83	7114.87	11095.81	-764.11	-11070.05	2.50	1394787.89	3175943.24	40.415374	-104.868122
Projection to Bit	17227.00	89.69	267.83	7114.99	11117.80	-764.95	-11092.03	0.00	1394786.89	3175921.26	40.415371	-104.868201

Survey Type: Def Survey

Survey Error Model: ISCWSA Rev 0 *** 3-D 95.000% Confidence 2.7955 sigma

Survey Program:

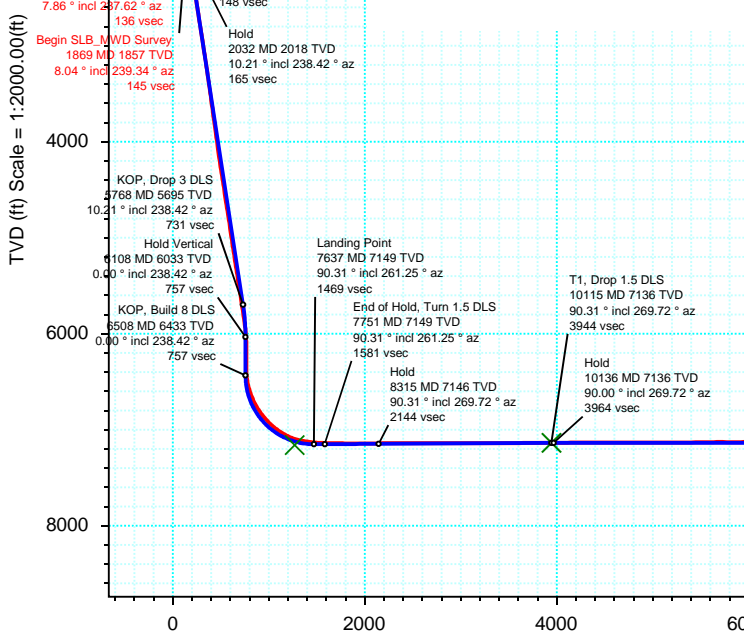
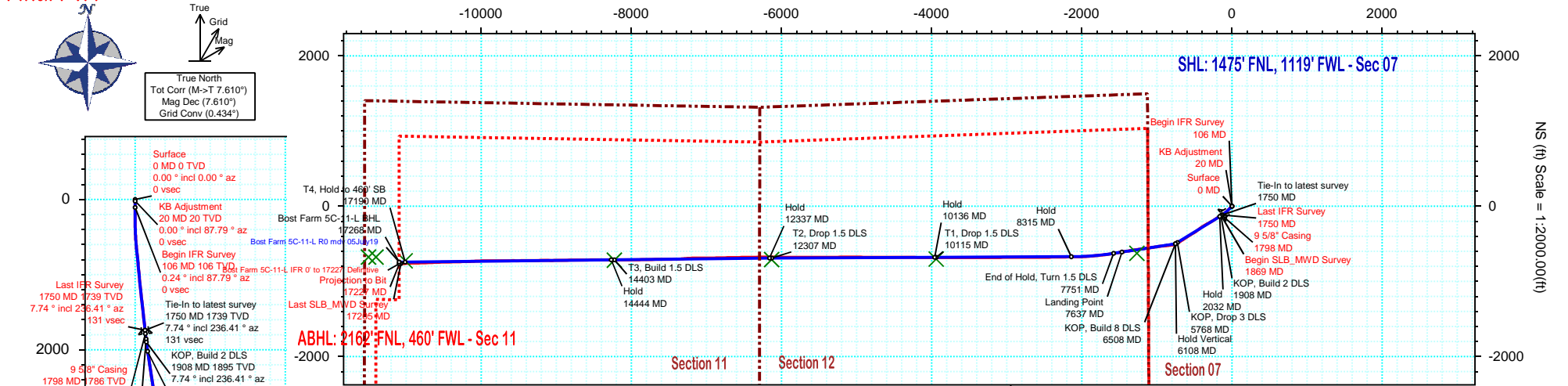
Description	Part	MD From (ft)	MD To (ft)	EOU Freq (ft)	Hole Size (in)	Casing Diameter (in)	Survey Tool Type	Borehole / Survey
	1	0.000	20.000	1/98.425	13.500	9.625	NAL_MWD_IFR1-Depth Only	Original Hole / Bost Farm 5C-11-L IFR 0' to 17227' Definitive
	1	20.000	20.000	Act Stns	13.500	9.625	NAL_MWD_IFR1-Depth Only	Original Hole / Bost Farm 5C-11-L IFR 0' to 17227' Definitive
	1	20.000	1798.000	Act Stns	13.500	9.625	NAL_MWD_IFR1	Original Hole / Bost Farm 5C-11-L IFR 0' to 17227' Definitive
	1	1798.000	17227.000	Act Stns	8.500	5.500	NAL_MWD_IFR1+MS	Original Hole / Bost Farm 5C-11-L IFR 0' to 17227' Definitive



Borehole: Original Hole	Well: Bost Farm 5C-11-L	Field: CO, Weld County (NAD 83 NZ) - SRC	Structure: SRC Energy 07-05N-66W (Bost Farm 5-7 Pad DSU 22)
--	--	---	--

Gravity & Magnetic Parameters		Surface Location NAD83 Colorado State Plane, Northern Zone, US Feet			Miscellaneous	
Model: Magvar IFR	Dip: 66.61°	Date: 07-Jun-2019	Lat: N 40 25 2.92	Northing: 1395635.79ftUS	Grid Conv: 0.434°	Slot: Bost Farm 5C-11-L TVD Ref: KB 20ft(4898ft above MSL)
MagDec: 7.61°	FS: 52249NT	Gravity FS: 999.025mgN (9.80665 Based)	Lon: W 104 49 42.12	Easting: 3187006.73ftUS	Scale Fact: 0.99996107	Plan: Bost Farm 5C-11-L IFR 0' to 17227' Definitive

Final Pva



Target Name	Target Description	Latitude	Longitude	Northing	Easting	TVD	VSec	N(+)/S(-)	Local Coord
Bost Farm 5-7 Pad DSU 22 - Sec 12-11		N 40 24 50.94	W 104 49 41.85	1394423.60	3187036.52	4898.00	50.49	-1212.43	20.61
Bost Farm 5-7 Pad DSU 22 - Sec 12-11 - CL		N 40 24 50.94	W 104 49 41.85	1394423.60	3187036.52	4898.00	50.49	-1212.43	20.61
Bost Farm 5-7 Pad DSU 22 - Sec 12-11 - HL		N 40 25 2.72	W 104 49 42.12	1395615.75	3187006.61	4898.00	1.45	-20.04	-0.28
Bost Farm 5C-11-L BPZ		N 40 24 56.22	W 104 52 9.53	1394873.76	3175810.36	7129.71	11422.28	-675.72	-11402.28
Bost Farm 5C-11-L BHL		N 40 24 56.21	W 104 52 10.83	1394872.32	3175510.41	7129.71	11522.12	-676.40	-11502.25
Bost Farm 5C-11-L T4		N 40 24 55.72	W 104 52 4.52	14678058.17	1677179.90	7130.20	11038.26	-726.72	-11014.60
Bost Farm 5C-11-L T2		N 40 24 55.89	W 104 51 1.40	14678083.52	1682060.59	7135.90	6163.04	-710.84	-6131.92
Bost Farm 5C-11-L T1		N 40 24 55.96	W 104 50 33.06	14678094.90	1684251.51	7135.90	3974.57	-703.71	-3940.10
Bost Farm 5C-11-L T3		N 40 24 55.82	W 104 51 28.49	14678072.64	1679965.98	7146.30	8255.30	-717.65	-8227.38
Bost Farm 5C-11-L TOP		N 40 24 56.74	W 104 49 58.49	1395000.75	3185745.41	7159.00	1300.63	-625.49	-1266.14

Critical Point	MD	INCL	AZIM	TVD	VSEC	N(+)/S(-)	E(+)/W(-)	DLS
Surface	0.00	0.00	0.00	0.00	0.00	0.00	0.00	
KB Adjustment	20.00	0.00	87.79	20.00	0.00	0.00	0.00	0.00
Begin IFR Survey	106.00	0.24	87.79	106.00	-0.18	0.01	0.18	0.28
Last IFR Survey	1750.00	7.74	236.41	1738.70	136.56	-115.24	-130.03	1.48
9 5/8" Casing	1798.00	7.86	237.62	1786.25	142.22	-118.79	-135.49	0.42
Begin SLB_MWD Survey	1869.00	8.04	239.34	1856.57	150.88	-123.92	-143.86	0.42
Last SLB_MWD Survey	17205.00	89.69	267.83	7114.87	11095.81	-764.11	-11070.05	2.50
Projection to Bit	17227.00	89.69	267.83	7114.99	11117.80	-764.95	-11092.03	0.00

Vertical Section (ft) Azim = 269.70° Scale = 1:2000.00(ft) Origin = 0N/-S, 0E/-W