

HALLIBURTON

iCem[®] Service

CONOCO/PHILLIPS COMPANY EBUSINESS

Prosper Farms 4-65 11-12 3BH Surface

Sincerely,
Meghan Jacobs

Legal Notice

Disclaimer:

All information in this report is provided subject to the terms and conditions which govern the services provided by Halliburton. Halliburton personnel use their best efforts in gathering information and their best judgment in interpreting it, but any interpretation, research, analysis or recommendation furnished by Halliburton are opinions based upon inferences from measurements and empirical relationships and assumptions, which inferences and empirical relationships and assumptions are not infallible, and with respect to which professionals in the industry may differ. iCem 3D Displacement results are used to understand how fluids intermix during a cement job. Simulation and 3D displacement results are not intended as and should not be used as a replacement for bond logs in determining top of cement. Current 3D model calculations are known to model more volume than the input volume for standard cases due to known calculation improvements required. For rotational cases, the modeled volume will be impacted by the same calculations impacting the standard cases, as well as additional constraints imposed to make the calculation time required operationally feasible. Therefore, until further notice, 3D displacement results should not be used for replacement of a bond log, or used as an identifier of top of cement. HALLIBURTON IS UNABLE TO GUARANTEE THE ACCURACY OF ANY CHART INTERPRETATION, RESEARCH ANALYSIS, OR JOB RECOMMENDATION and any interpretation or recommendation is not for use of or reliance upon by any third party. The customer has full responsibility for any of its decisions which are based on the information provided in this report.

Table of Contents

1.0 Cementing Job Summary 4

 1.1 Executive Summary and Lab Report4

2.0 Real-Time Job Summary 9

 2.1 Job Event Log9

3.0 Attachments..... 11

 3.1 Prosper Farms 4-65 11-12 3BH Surface – Job Chart with Events11

 3.2 Prosper Farms 4-65 11-12 3BH Surface – Job Chart without Events12

1.0 Cementing Job Summary

1.1 Executive Summary

Halliburton appreciates the opportunity to perform the cementing services on the **Prosper Farms 4-65 11-12 3BH** cement **Surface** casing job. A pre-job safety meeting was held before the job where details of the job were discussed, potential safety hazards were reviewed, and environmental compliance procedures were outlined.

Approximately 95 bbls of cement were returned to surface.

Halliburton maintains a continuous quality improvement process and appreciates any comments or suggestions that you may have. Halliburton again thanks you for the opportunity to perform service work on this well. We hope to be your solutions provider for future projects.

Respectfully,

Halliburton Fort Lupton

The Road to Excellence Starts with Safety

Sold To #: 352431		Ship To #: 3898987		Quote #: 0022543511		Sales Order #: 0905498520				
Customer: CONOCO/PHILLIPS COMPANY-EBUS				Customer Rep: ERICH QUELLETTE						
Well Name: PROSPER FARMS 4-65 11-12			Well #: 3BH		API/UWI #: 05-005-07384-00					
Field: WILDCAT		City (SAP): WATKINS		County/Parish: ARAPAHOE		State: COLORADO				
Legal Description: NW SW-11-4S-65W-2316FSL-490FWL										
Contractor:				Rig/Platform Name/Num: Nabors B16						
Job BOM: 7521 7521										
Well Type: HORIZONTAL OIL										
Sales Person: HALAMERICA\HB41307				Srv Supervisor: Vitali Neverdasov						
Job										
Formation Name										
Formation Depth (MD)		Top				Bottom				
Form Type				BHST						
Job depth MD		2192ft		Job Depth TVD		2192				
Water Depth				Wk Ht Above Floor						
Perforation Depth (MD)		From		To						
Well Data										
Description	New / Used	Size in	ID in	Weight lbm/ft	Thread	Grade	Top MD ft	Bottom MD ft	Top TVD ft	Bottom TVD ft
Casing		16	15.25				0	100	0	98
Casing	0	9.625	8.921	36	STC	J-55	0	2192	0	0
Open Hole Section			13.5				100	2201	0	0
Tools and Accessories										
Type	Size in	Qty	Make	Depth ft		Type	Size in	Qty	Make	
Guide Shoe	9.625					Top Plug	9.625	1	HES	
Float Shoe	9.625	1	N/A	2190		Bottom Plug	9.625	1	HES	
Float Collar	9.625	1	N/A	2145		SSR plug set	9.625			
Insert Float	9.625					Plug Container	9.625	1	HES	
Stage Tool	9.625					Centralizers	9.625	18		
Fluid Data										
Stage/Plug #: 1										

Fluid #	Stage Type	Fluid Name	Qty	Qty UoM	Mixing Density lbm/gal	Yield ft3/sack	Mix Fluid Gal	Rate bbl/min	Total Mix Fluid Gal
1	10 lb/gal Tuned Spacer III	Tuned Spacer III	50	bbl	10	8.97		4	
Fluid #	Stage Type	Fluid Name	Qty	Qty UoM	Mixing Density lbm/gal	Yield ft3/sack	Mix Fluid Gal	Rate bbl/min	Total Mix Fluid Gal
2	SwiftCem	SWIFTCEM (TM) SYSTEM	490	sack	12	2.57		8	15.14
Fluid #	Stage Type	Fluid Name	Qty	Qty UoM	Mixing Density lbm/gal	Yield ft3/sack	Mix Fluid Gal	Rate bbl/min	Total Mix Fluid Gal
3	SwiftCem	SWIFTCEM (TM) SYSTEM	255	sack	14.2	1.59		6.5	7.9
Fluid #	Stage Type	Fluid Name	Qty	Qty UoM	Mixing Density lbm/gal	Yield ft3/sack	Mix Fluid Gal	Rate bbl/min	Total Mix Fluid Gal
4	Displacement	Displacement	165	bbl	8.33			8	
Cement Left In Pipe		Amount	45 ft		Reason			Shoe Joint	
Comment : 95 BBLS OF CEMENT BACK TO SURFACE.									

HALLIBURTON

Rockies, Brighton

Lab Results- Lead

Job Information

Request/Slurry	2536441/1	Rig Name	Nabors B16	Date	19/FEB/2019
Submitted By	Bryce Hinsch	Job Type	Surface Casing	Bulk Plant	Brighton
Customer	ConocoPhillips	Location		Well	Prosper Farms 4-65 11-12 3BH

Well Information

Casing/Liner Size	9.625 in	Depth MD	2147 ft	BHST	35°C / 95°F
Hole Size	13.5 in	Depth TVD	2147 ft	BHCT	34°C / 93°F
Pressure	1214 psi				

Cement Information - Lead Design

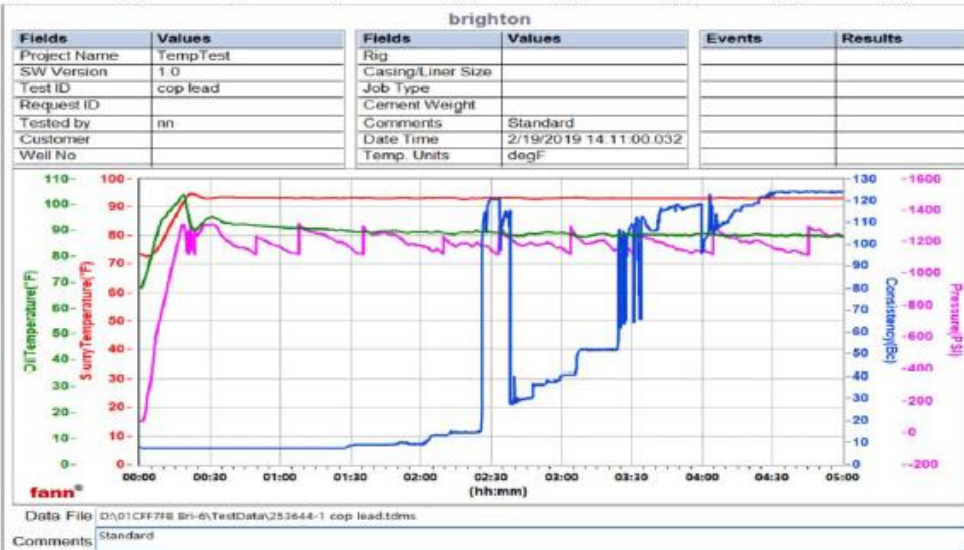
Conc	UOM	Cement/Additive	MP	Sample Type	Sample Date	Lot No.	Cement Properties		
100	% BWOC	Cemex Type I-II					Slurry Density	12	lbm/gal
15.14	gal/sack	Field (Fresh) Water					Slurry Yield	2.57	ft ³ /sack
2	% BWOC	Cal-Seal 60	PB				Water Requirement	15.14	gal/sack
2.3	% BWOC	Econolite (Powder - PB)	PB				Total Mix Fluid	15.14	gal/sack
0.2	% BWOC	VERSASET (PB)	PB				Water Source	Field (Fresh) Water	
6	lb/sk	Mountain Enhancer 923 PB							

Operation Test Results Request ID 2536441/1

Thickening Time, Request Test ID:36250204

20/FEB/2019

Temp (degF)	Pressure (psi)	Reached in (min)	Start BC	30 Bc (hh:mm)	40 Bc (hh:mm)	50 Bc (hh:mm)	70 Bc (hh:mm)	100 Bc (hh:mm)
93	1214	18	8	2:46	2:59	3:06	3:24	3:24



This report is the property of Halliburton Energy Services and neither it nor any part thereof, nor a copy thereof, is to be published or disclosed without first securing the expressed written approval of Halliburton. It may however be used in the course of regular business operations by any person or concern receiving such report from Halliburton. This report is for information purposes only and the content is limited to the sample described. Halliburton makes no warranties, expressed or implied, as to the accuracy of the contents or results. Any user of this report agrees Halliburton shall not be liable for any loss or damage regardless of cause, including any act or omission of Halliburton, resulting from the use hereof.

HALLIBURTON

Lab Results- Tail

Rockies, Brighton

Job Information

Request/Slurry	2536442/1	Rig Name	Nabors B16	Date	19/FEB/2019
Submitted By	Bryce Hinsch	Job Type	Surface Casing	Bulk Plant	Brighton
Customer	ConocoPhillips	Location		Well	Prosper Farms 4-65 11-12 3BH

Well Information

Casing/Liner Size	9.625 in	Depth MD	2147 ft	BHST	35°C / 95°F
Hole Size	13.5 in	Depth TVD	2147 ft	BHCT	34°C / 93°F
Pressure	1214 psi				

Cement Information - Tail Design

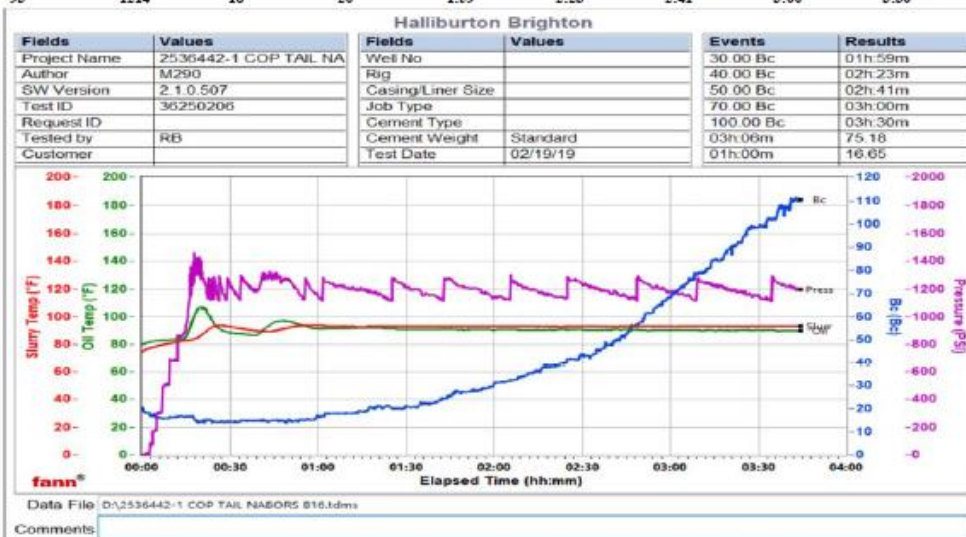
Conc	UOM	Cement/Additive	MP	Sample Type	Sample Date	Lot No.	Cement Properties		
100	% BWOC	Mountain G		Bulk Blend	20.02.19	9795	Slurry Density	14.2	lbm/gal
7.9	gal/sack	Field (Fresh) Water		Lab	09.10.18	8/19/2018	Slurry Yield	1.59	ft ³ /sack
2	% BWOC	Cal-Seal 60	PB	Bulk Blend	20.02.19	0605435	Water Requirement	7.9	gal/sack
1.3	% BWOC	Econolite (Powder - PB)	PB	Bulk Blend	20.02.19	U011011	Total Mix Fluid	7.9	gal/sack
0.2	% BWOC	VERSASET (PB)	PB	Bulk Blend	20.02.19	101376573	Water Source	Field (Fresh) Water	
6	lb/sk	Mountain Enhancer 923	PB	Bulk Blend	20.02.19				

Operation Test Results Request ID 2536442/1

Thickening Time, Request Test ID:36250206

20/FEB/2019

Temp (degF)	Pressure (psi)	Reached in (min)	Start BC	30 Bc (hh:mm)	40 Bc (hh:mm)	50 Bc (hh:mm)	70 Bc (hh:mm)	100 Bc (hh:mm)
93	1214	18	20	1:59	2:23	2:41	3:00	3:30



This report is the property of Halliburton Energy Services and neither it nor any part thereof, nor a copy thereof, is to be published or disclosed without first securing the expressed written approval of Halliburton. It may however be used in the course of regular business operations by any person or concern receiving such report from Halliburton. This report is for information purposes only and the content is limited to the sample described. Halliburton makes no warranties, expressed or implied, as to the accuracy of the contents or results. Any user of this report agrees Halliburton shall not be liable for any loss or damage regardless of cause, including any act or omission of Halliburton, resulting from the use hereof.

2.0 Real-Time Job Summary

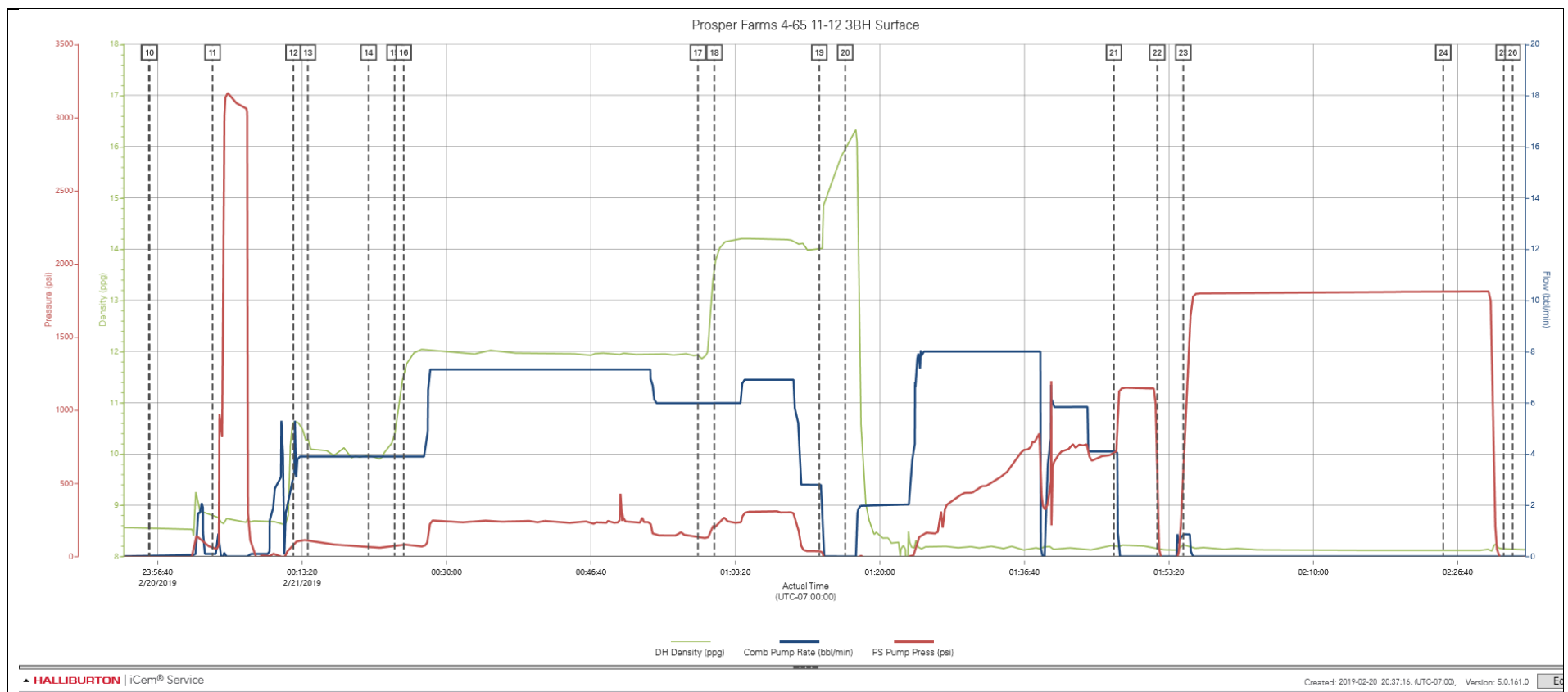
2.1 Job Event Log

Type	Seq. No.	Activity	Graph Label	Date	Time	Source	DH Density (ppg)	Comb Pump Rate (bbl/min)	PS Pump Press (psi)	Comments
Event	1	Call Out	Call Out	2/20/2019	11:30:00	USER				For Location @ 16:30
Event	2	Depart from Service Center or Other Site	Depart from Service Center or Other Site	2/20/2019	13:30:00	USER				Called Journey
Event	3	Arrive at Location from Service Center	Arrive at Location from Service Center	2/20/2019	15:10:00	USER				38 MILES. DISCUSS NUMBERS AND PROCEDURE WITH CUSTOMER. RIG IS RUNNING CASING.
Event	4	Rig-Up Equipment	Rig-Up Equipment	2/20/2019	16:30:00	USER				Rig-up all surface lines and equipment up to the Buffer zone
Event	5	Safety Meeting - Pre Rig-Up	Safety Meeting - Pre Rig-Up	2/20/2019	16:40:00	USER				JSA to discuss the hazards of rig-up
Event	6	Casing on Bottom	Casing on Bottom	2/20/2019	22:24:00	USER				Landing joint brought to floor and landed
Event	7	Circulate Well	Circulate Well	2/20/2019	22:40:00	USER				RIG UP CEMENT HEAD AND MANIFOLD FOR RIG TO CIRCULATE.
Event	8	Pre-Job Safety Meeting	Pre-Job Safety Meeting	2/20/2019	23:35:00	USER	0.03	0.00	-1.00	With all personnel, to discuss the hazards of pumping the job, and pump schedule.
Event	9	Start Job	Start Job	2/20/2019	23:55:39	COM4	8.56	0.00	-3.00	
Event	10	Check Weight	Check Weight	2/20/2019	23:55:44	COM4	8.56	0.00	-3.00	
Event	11	Test Lines	Test Lines	2/21/2019	00:03:00	USER	8.79	0.10	61.00	Test lines @ 3085 psi
Event	12	Pump Spacer	Pump Spacer	2/21/2019	00:12:20	USER	10.62	3.10	73.00	BATCH/ WEIGHT/ PUMP 50 BBLS OF SPACER @ 10 PPG.
Event	13	Drop Top Plug	Drop Top Plug	2/21/2019	00:14:00	USER	10.28	3.90	108.00	Pre-loaded top plug in plug container verified by customer rep.
Event	14	Drop Bottom Plug	Drop Bottom Plug	2/21/2019	00:21:00	USER	9.99	3.90	66.00	DROP BOTTOM PLUG ON THE FLY 47 BBLS INTO SPACER
Event	15	Pump Lead Cement	Pump Lead Cement	2/21/2019	00:24:00	USER	10.38	3.90	70.00	BATCH/ WEIGHT/PUMP 490 sks(224 bbls) of Lead Swiftcem @ 12.0 ppg, verified with pressurized scales

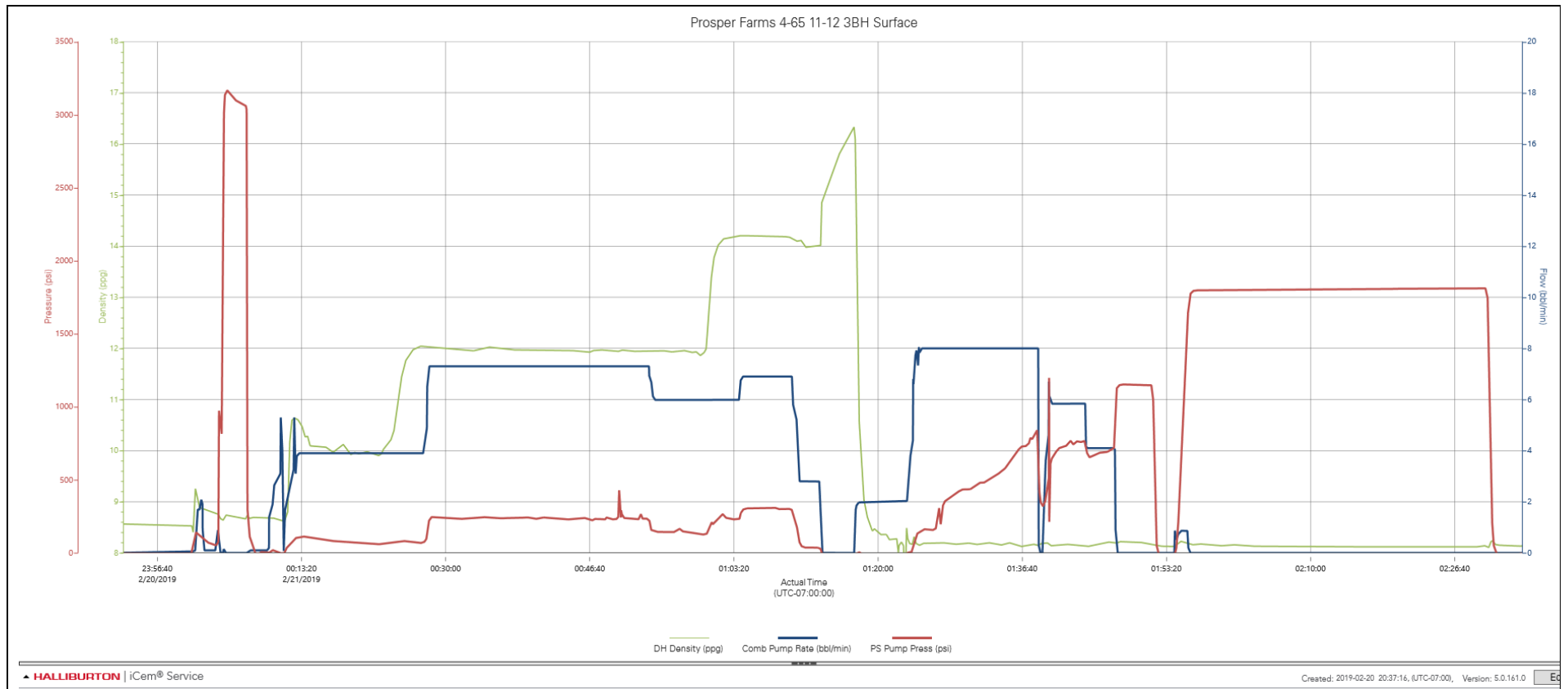
Event	16	Check Weight	Check Weight	2/21/2019	00:25:03	COM4	11.57	3.90	79.00	
Event	17	Pump Tail Cement	Pump Tail Cement	2/21/2019	00:59:00	USER	11.94	5.90	142.00	BATCH/WEIGHT/PUMP 255 SKS (72.2 BBLS) OF TAIL CEMENT @ 14.2 PPG.
Event	18	Check Weight	Check Weight	2/21/2019	01:00:54	COM4	13.65	6.00	200.00	
Event	19	Shutdown	Shutdown	2/21/2019	01:13:00	USER	14.00	2.80	36.00	Finished pumping cement
Event	20	Pump Displacement - Start	Pump Displacement - Start	2/21/2019	01:16:00	USER	15.98	0.00	-33.00	165.8 bbls fresh water. Washing up on top of the plug.
Event	21	Bump Plug	Bump Plug	2/21/2019	01:47:00	USER	8.21	4.10	711.00	@500 psi over final circulating pressure of 730 psi
Event	22	Check Floats	Check Floats	2/21/2019	01:52:00	USER	8.19	0.00	493.00	Floats held. 1 bbl back
Event	23	Event	Event	2/21/2019	01:55:00	USER	8.24	0.90	580.00	PRESSURE UP 1800 PSI FOR 30 MIN CASING TEST.
Event	24	Event	Event	2/21/2019	02:25:00	USER	8.12	0.00	1811.00	BLEED OFF PRESSURE.
Event	25	End Job	End Job	2/21/2019	02:31:58	COM4	8.15	0.00	-10.00	
Event	26	Pre-Rig Down Safety Meeting	Pre-Rig Down Safety Meeting	2/21/2019	02:33:00	USER	8.15	0.00	-7.00	JSA to discuss the hazards of rig-down

3.0 Attachments

3.1 Prosper Farms 4-65 11-12 3BH Surface – Job Chart with Events



3.2 Prosper Farms 4-65 11-12 3BH Surface – Job Chart without Events



HALLIBURTON

iCem[®] Service

CONOCOPHILLIPS COMPANY - EBUS

Prosper Farms 4-65 11-12 3BH Production

Sincerely,
Meghan Jacobs

Legal Notice

Disclaimer:

All information in this report is provided subject to the terms and conditions which govern the services provided by Halliburton. Halliburton personnel use their best efforts in gathering information and their best judgment in interpreting it, but any interpretation, research, analysis or recommendation furnished by Halliburton are opinions based upon inferences from measurements and empirical relationships and assumptions, which inferences and empirical relationships and assumptions are not infallible, and with respect to which professionals in the industry may differ. iCem 3D Displacement results are used to understand how fluids intermix during a cement job. Simulation and 3D displacement results are not intended as and should not be used as a replacement for bond logs in determining top of cement. Current 3D model calculations are known to model more volume than the input volume for standard cases due to known calculation improvements required. For rotational cases, the modeled volume will be impacted by the same calculations impacting the standard cases, as well as additional constraints imposed to make the calculation time required operationally feasible. Therefore, until further notice, 3D displacement results should not be used for replacement of a bond log, or used as an identifier of top of cement. HALLIBURTON IS UNABLE TO GUARANTEE THE ACCURACY OF ANY CHART INTERPRETATION, RESEARCH ANALYSIS, OR JOB RECOMMENDATION and any interpretation or recommendation is not for use of or reliance upon by any third party. The customer has full responsibility for any of its decisions which are based on the information provided in this report.

Table of Contents

1.0 Cementing Job Summary 4

 1.1 Executive Summary and Lab Report4

2.0 Real-Time Job Summary 11

 2.1 Job Event Log11

3.0 Attachments..... 14

 3.1 Prosper Farms 4-65 11-12 3BH Production – Job Chart with Events.....14

 3.2 Prosper Farms 4-65 11-12 3BH Production – Job Chart without Events15

1.0 Cementing Job Summary

1.1 Executive Summary

Halliburton appreciates the opportunity to perform the cementing services on the **Prosper Farms 4-65 11-12 3BH** cement **Production** casing job. A pre-job safety meeting was held before the job where details of the job were discussed, potential safety hazards were reviewed, and environmental compliance procedures were outlined.

Approximately 20 bbls of spacer were returned to surface.

Halliburton maintains a continuous quality improvement process and appreciates any comments or suggestions that you may have. Halliburton again thanks you for the opportunity to perform service work on this well. We hope to be your solutions provider for future projects.

Respectfully,

Halliburton Fort Lupton

The Road to Excellence Starts with Safety

Sold To #: 352431		Ship To #: 3898987		Quote #: 0022543699		Sales Order #: 0905525068					
Customer: CONOCO/PHILLIPS COMPANY-EBUS				Customer Rep: Aron Negusse and Jack Longmire							
Well Name: PROSPER FARMS 4-65 11-12			Well #: 3BH		API/UWI #: 05-005-07384-00						
Field: WILDCAT		City (SAP): WATKINS		County/Parish: ARAPAHOE		State: COLORADO					
Legal Description: NW SW-11-4S-65W-2316FSL-490FWL											
Contractor:				Rig/Platform Name/Num: Nabors B16							
Job BOM: 7523 7523											
Well Type: HORIZONTAL OIL											
Sales Person: HALAMERICA\HB41307				Srv Supervisor: Nicholas Roles							
Job											
Formation Name											
Formation Depth (MD)		Top		Bottom							
Form Type					BHST						
Job depth MD		17911ft			Job Depth TVD						
Water Depth					Wk Ht Above Floor						
Perforation Depth (MD)		From		To							
Well Data											
Description	New / Used	Size in	ID in	Weight lbm/ft	Thread	Grade	Top MD ft	Bottom MD ft	Top TVD ft	Bottom TVD ft	
Casing		9.625	8.921	36	STC	J-55	0	2192	0	2192	
Casing		5.5	4.778	20	TXP-BTC	P-110	0	17911	0	7091	
Open Hole Section			8.5				2153	17930	2192	7091	
Tools and Accessories											
Type	Size in	Qty	Make	Depth ft		Type	Size in	Qty	Make		
Guide Shoe	5.5			17911		Top Plug	5.5	1	ANT		
Float Shoe	5.5					Bottom Plug	5.5	1	ANT		
Float Collar	5.5			17829.7		SSR plug set	5.5		HES		
Insert Float	5.5					Plug Container	5.5	1	HES		
Stage Tool	5.5					Centralizers	5.5		HES		
Fluid Data											
Stage/Plug #: 1											
Fluid #	Stage Type	Fluid Name			Qty	Qty UoM	Mixing Density lbm/gal	Yield ft3/sack	Mix Fluid Gal	Rate bbl/min	Total Mix Fluid Gal
1	10.5 lb/gal Tuned Spacer III	Tuned Spacer III			60	bbl	10.5	6.62		5	

Fluid #	Stage Type	Fluid Name	Qty	Qty UoM	Mixing Density lbm/gal	Yield ft3/sack	Mix Fluid Gal	Rate bbl/min	Total Mix Fluid Gal	
2	ElastiCem	ELASTICEM (TM) SYSTEM	825	sack	13.2	1.57		6	7.54	
Fluid #	Stage Type	Fluid Name	Qty	Qty UoM	Mixing Density lbm/gal	Yield ft3/sack	Mix Fluid Gal	Rate bbl/min	Total Mix Fluid Gal	
3	EconoCem	ECONOCEM (TM) SYSTEM	1505	sack	13.5	1.79		6	8.73	
Fluid #	Stage Type	Fluid Name	Qty	Qty UoM	Mixing Density lbm/gal	Yield ft3/sack	Mix Fluid Gal	Rate bbl/min	Total Mix Fluid Gal	
4	MMCR Displacement	MMCR Displacement	40	bbl	8.34			10		
0.50 gal/bbl		MICRO MATRIX CEMENT RETARDER, 5 GAL PAIL (100003781)								
Fluid #	Stage Type	Fluid Name	Qty	Qty UoM	Mixing Density lbm/gal	Yield ft3/sack	Mix Fluid Gal	Rate bbl/min	Total Mix Fluid Gal	
5	Water	Water	358	bbl	8.33			10		
Cement Left In Pipe		Amount	81.1 ft		Reason			Shoe Joint		
Mix Water:		pH 07	Mix Water Chloride:			0 ppm		Mix Water Temperature:		85 °F °C
Cement Temperature:		82 °F °C	Plug Displaced by:			8.33lb/gal		Disp. Temperature:		90 °F °C
Plug Bumped?		Yes	Bump Pressure:			3600psi MPa		Floats Held?		Yes
Spacer Returns:		20 bbl m3	Returns Density:			## lb/gal kg/m3		Returns Temperature:		## °F °C
Comment First reading of cement temp with bad batch was 115deg. Pumped off roughly 29sks or 7bbls lead cement to pits to batch up new with roughly 84deg water. Mixed perfectly after clean out and cement temp was around 82deg. About 1hour of NPT during water scenario. Got 20bbls Spacer back. Estimated TOT-6312' TOL-895'										

HALLIBURTON

Rockies, Brighton

Lab Results- Lead

Job Information

Request/Slurry	2538487/1	Rig Name	Nabors B16	Date	28/FEB/2019
Submitted By	Meghan Jacobs	Job Type	Production Casing	Bulk Plant	Brighton
Customer	ConocoPhillips	Location	Weld	Well	Prosper Farms 4-65 11-12 3BH

Well Information

Casing/Liner Size	5.5 in	Depth MD	17916 ft	BHST	104°C / 219°F
Hole Size	8.5 in	Depth TVD	7450 ft	BHCT	104°C / 219°F
Pressure	4764 psi				

Cement Information - Lead Design

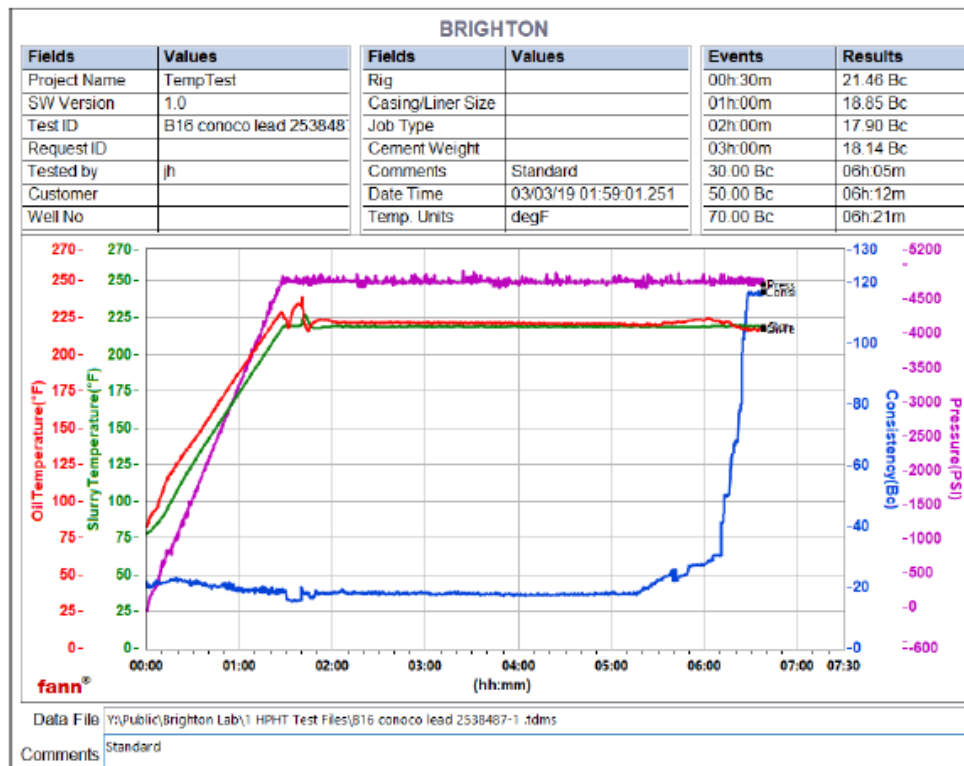
Conc	UOM	Cement/Additive	MP	Sample Type	Sample Date	Lot No.	Cement Properties		
100	% BWOC	Cement Blend					Slurry Density	13.2	lbm/gal
7.54	gal/sack	Field (Fresh) Water		Lab	09.10.18	8/19/2018	Slurry Yield	1.57	ft ³ /sack
5	lb/sk	WellLife 708 (PB)	PB	Bulk Blend	03.03.19	2138	Water Requirement	7.54	gal/sack
0.1	% BWOC	SA-1015 (PB)	PB	Bulk Blend	03.03.19	8F3692W	Total Mix Fluid	7.54	gal/sack
0.35	% BWOC	SCR-100 (PB)	PB	Bulk Blend	03.03.19	CT18J29001			
1	lb/sk	Silicalite - Compacted	PB	Bulk Blend	03.03.19	B25D12-2	Water Source	Field (Fresh)	
0.2	% BWOC	HALAD-344 (PB)	PB	Bulk Blend	03.03.19	20181232	Water Chloride	Water	

Operation Test Results Request ID 2538487/1

Thickening Time - ON-OFF-ON, Request Test ID:36275698										03/MAR/2019
Test Temp (degF)	Pressure (psi)	Reached in (min)	30 Bc (hh:mm)	50 Bc (hh:mm)	70 Bc (hh:mm)	100 Bc (hh:mm)	Start Bc	Stirring before stop (mins)	Static Period (min)	Peak reading (BC)
219	4764	87	6:05	6:12	6:21	6:22	22.5	90	10	18

These are draft results and have not been approved for final use.

This report is the property of Halliburton Energy Services and neither it nor any part thereof, nor a copy thereof, is to be published or disclosed without first securing the expressed written approval of Halliburton. It may however be used in the course of regular business operations by any person or concern receiving such report from Halliburton. This report is for information purposes only and the content is limited to the sample described. Halliburton makes no warranties, expressed or implied, as to the accuracy of the contents or results. Any user of this report agrees Halliburton shall not be liable for any loss or damage regardless of cause, including any act or omission of Halliburton, resulting from the use hereof.



These are draft results and have not been approved for final use.

This report is the property of Halliburton Energy Services and neither it nor any part thereof, nor a copy thereof, is to be published or disclosed without first securing the expressed written approval of Halliburton. It may however be used in the course of regular business operations by any person or concern receiving such report from Halliburton. This report is for information purposes only and the content is limited to the sample described. Halliburton makes no warranties, expressed or implied, as to the accuracy of the contents or results. Any user of this report agrees Halliburton shall not be liable for any loss or damage regardless of cause, including any act or omission of Halliburton, resulting from the use hereof.

HALLIBURTON

Rockies, Brighton

Lab Results- Tail

Job Information

Request/Slurry	2538488/2	Rig Name	Nabors B16	Date	28/FEB/2019
Submitted By	Meghan Jacobs	Job Type	Production Casing	Bulk Plant	Brighton
Customer	ConocoPhillips	Location	Weld	Well	Prosper Farms 4-65 11-12 3BH

Well Information

Casing/Liner Size	5.5 in	Depth MD	17916 ft	BHST	104°C / 219°F
Hole Size	8.5 in	Depth TVD	7450 ft	BHCT	104°C / 219°F
Pressure	4764 psi				

Cement Information - Tail Design

Conc	UOM	Cement/Additive	MP	Sample Type	Sample Date	Lot No.	Cement Properties		
100	% BWOC	Cement Blend					Slurry Density	13.5	lbm/gal
8.73	gal/sack	Field (Fresh) Water		Lab	01.03.19	3/1/19	Slurry Yield	1.79	ft ³ /sack
25	% BWOC	SS-200 silica flour	PB	Bulk Blend	03.03.19		Water Requirement	8.73	gal/sack
0.1	% BWOC	SA-1015 (PB)	PB	Bulk Blend	03.03.19	8F3692W	Total Mix Fluid	8.73	gal/sack
0.3	% BWOC	HR-5 (PB)	PB	Bulk Blend	03.03.19	1180200			
0.8	% BWOC	HALAD-344 (PB)	PB	Bulk Blend	03.03.19	20181232	Water Source	Field (Fresh)	
0.2	% BWOC	HALAD-413 (PB)	PB	Bulk Blend	03.03.19	ZM8J0686A0	Water Chloride	Water	

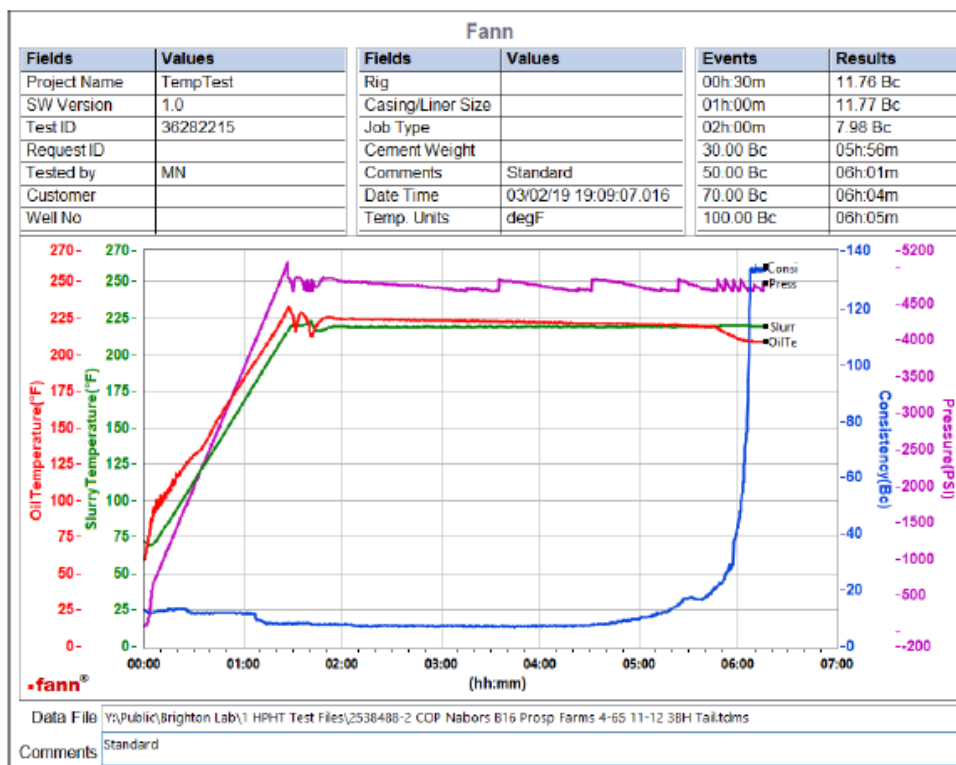
Operation Test Results Request ID 2538488/2

Thickening Time - ON-OFF-ON, Request Test ID:36282215 03/MAR/2019

Test Temp (degF)	Pressure (psi)	Reached in (min)	30 Bc (hh:mm)	50 Bc (hh:mm)	70 Bc (hh:mm)	100 Bc (hh:mm)	Start Bc	Stirring before stop (mins)	Static Period (min)	Peak reading (BC)
219	4764	87	5:56	6:01	6:04	6:05	13.3	90	10	8

These are draft results and have not been approved for final use.

This report is the property of Halliburton Energy Services and neither it nor any part thereof, nor a copy thereof, is to be published or disclosed without first securing the expressed written approval of Halliburton. It may however be used in the course of regular business operations by any person or concern receiving such report from Halliburton. This report is for information purposes only and the content is limited to the sample described. Halliburton makes no warranties, expressed or implied, as to the accuracy of the contents or results. Any user of this report agrees Halliburton shall not be liable for any loss or damage regardless of cause, including any act or omission of Halliburton, resulting from the use hereof.



These are draft results and have not been approved for final use.

This report is the property of Halliburton Energy Services and neither it nor any part thereof, nor a copy thereof, is to be published or disclosed without first securing the expressed written approval of Halliburton. It may however be used in the course of regular business operations by any person or concern receiving such report from Halliburton. This report is for information purposes only and the content is limited to the sample described. Halliburton makes no warranties, expressed or implied, as to the accuracy of the contents or results. Any user of this report agrees Halliburton shall not be liable for any loss or damage regardless of cause, including any act or omission of Halliburton, resulting from the use hereof.

2.0 Real-Time Job Summary

2.1 Job Event Log

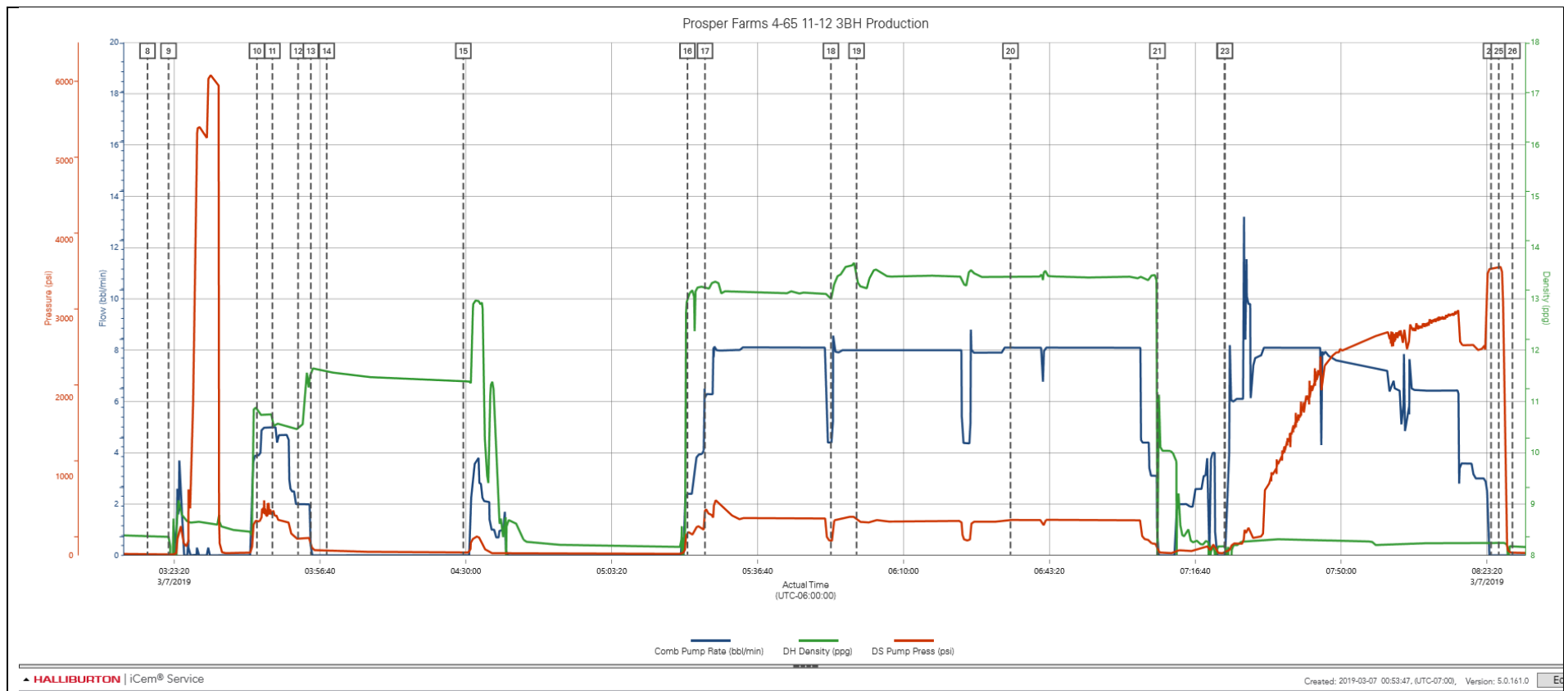
Type	Seq. No.	Activity	Graph Label	Date	Time	Source	Comb Pump Rate (bbl/min)	DH Density (ppg)	DS Pump Press (psi)	Comments
Event	1	Check Floats	Call Out	3/6/2019	19:00:00	USER				Called out by Service Coordinator for O/L at 0000
Event	2	Pre-Convoy Safety Meeting	Pre-Convoy Safety Meeting	3/6/2019	22:15:00	USER				Held meeting with all personnel in convoy to discuss directions and hazards associated with drive, all fit to drive.
Event	3	Depart from Service Center or Other Site	Depart from Service Center or Other Site	3/6/2019	22:30:00	USER				Journey Management prior to departure
Event	4	Arrive at Location from Service Center	Arrive at Location from Service Center	3/7/2019	00:00:00	USER				Upon arrival met with company man to discuss job details and calculations, performed hazard hunt and site assessment.
Event	5	Pre-Rig Up Safety Meeting	Pre-Rig Up Safety Meeting	3/7/2019	00:15:00	USER				Discussed rigging up hazards and procedure according to HMS.
Event	6	Other	Other	3/7/2019	01:00:00	USER				Water test- PH-6, Chlor-0, Temp-89
Event	7	Pre-Job Safety Meeting	Pre-Job Safety Meeting	3/7/2019	02:55:00	USER	0.00	0.00	-3.00	Held safety meeting with all job associated personnel to discuss job procedure, hazards and stop work authority.
Event	8	Start Job	Start Job	3/7/2019	03:17:16	COM4	0.00	8.37	8.00	TD-17930', TP-17910.8' 5.5" 20#, FC-17829.7', TVD-7091', OH-8.5", SURF-2191.8' 9.625" 36#, MUD-9.8#.
Event	9	Test Lines	Test Lines	3/7/2019	03:22:04	COM4	0.00	8.37	10.00	Pumped 3bbls fresh water to fill lines, closed manifold, performed 500psi k/o function test, followed with 5th gear stall at 1400psi, proceeded to bring pressure up to 5000psi. Held pressure and no leaks.
Event	10	Pump Spacer 1	Pump Spacer 1	3/7/2019	03:42:16	COM4	3.90	10.87	436.00	Pumped 60bbls of 10.5# 6.62y 42.5g/s Tuned Spacer III with 40g Dual Spacer B, 40g Musol-A and 5g D-Air at 5bpm 520psi
Event	11	Check Weight	Check Weight	3/7/2019	03:45:47	COM4	5.00	10.55	554.00	Weight verified with pressurized mud scales.
Event	12	Drop Bottom Plug	Drop Bottom Plug	3/7/2019	03:51:40	COM4	2.00	10.48	211.00	Dropped by HES supervisor, witnessed by company man.

Event	13	Pump Lead Cement	Pump Lead Cement	3/7/2019	03:54:34	COM4	0.00	11.56	171.00	Josh Washburn was on pump and as soon as he began to bring on lead cement it turned to a peanut butter consistency and was not able to mix correctly. I tried to diagnose with everything i could think of and i did get the weight up to 12.6# however it still would not stay a smooth consistency and would not mix correctly. After checking oilers 6x5, micro-motion and a few tires at it, it was unmixable at its current state.
Event	14	Other	Other	3/7/2019	03:58:12	COM4	0.00	11.58	57.00	After trying for roughly 10-15min I checked the temperature of cement and 1st reading was 110deg. I immediately made a phone call to get advise on that temp due to it being so high and abnormal mixing temp. After deliberation with company man and HES supervisor we decided to try to circulate colder water through closest tank and the rearest tank. To bring temperature down and not risk wasting any more cement.
Event	15	Other	Other	3/7/2019	04:29:24	COM4	0.00	11.40	38.00	At this time the cement had reached approx. 120deg and I discussed with company man about dumping cement into pits and not downhole. Pumped off approx 8bbbls or 29sks at 12.6# Lead cement.
Event	16	Pump Lead Cement	Pump Lead Cement	3/7/2019	05:20:39	COM4	2.40	12.99	314.00	Began again with cooler water about 80deg with a fresh tub and no issues at all mixing, company man and myself was good with going through and pumping job as planned. Pumped 800sks or 224bbbls of 13.2# 1.57y 7.54g/s Elasticem at 8bpm 470psi
Event	17	Check Weight	Check Weight	3/7/2019	05:24:39	COM4	6.30	13.21	566.00	Weight verified with pressurized mud scales.
Event	18	Pump Tail Cement	Pump Tail Cement	3/7/2019	05:53:25	COM4	4.40	12.98	184.00	Pumped 1505sks or 480bbbls of 13.5# 1.79y 8.73g/s Econocem at 8bpm 523psi.
Event	19	Check Weight	Check Weight	3/7/2019	05:59:16	COM4	8.00	13.40	462.00	Weight verified with pressurized mud scales.
Event	20	Check Weight	Check Weight	3/7/2019	06:34:27	COM4	8.10	13.44	446.00	Weight verified with pressurized mud scales.
Event	21	Shutdown	Shutdown	3/7/2019	07:08:02	COM4	0.00	6.29	86.00	Pumped 10bbbls fresh water through pumps and lines.
Event	22	Drop Top Plug	Drop Top Plug	3/7/2019	07:23:21	COM4	0.00	8.18	30.00	Dropped by HES supervisor, witnessed by company man.
Event	23	Pump Displacement	Pump Displacement	3/7/2019	07:23:27	COM4	0.00	8.18	30.00	Pumped 398bbbls fresh water with 20g of MMCR in first 40bbbls, with 15g biocide, 1bucket oxygen and 2 barrels of Baracore 100 throughout.

Event	24	Bump Plug	Bump Plug	3/7/2019	08:24:15	COM4	0.00	8.25	3639.00	Slowed down at 3750bbls away to 3bpm, final circulating pressure 2600psi, Bump Pressure-3650psi. Held for 5min.
Event	25	Check Floats	Check Floats	3/7/2019	08:26:00	USER	0.00	8.23	3656.00	Released pressure and got 5bbls fresh water back. Floats held.
Event	26	End Job	End Job	3/7/2019	08:29:08	COM4	0.00	8.19	34.00	Got 20bbls Spacer back. Estimated TOT-6312' TOL-895'
Event	27	Pre-Rig Down Safety Meeting	Pre-Rig Down Safety Meeting	3/7/2019	08:35:00	USER	0.00	8.15	28.00	Discussed rigging down hazards and procedure according to HMS with all HES personnel
Event	28	Safety Meeting - Departing Location	Safety Meeting - Departing Location	3/7/2019	10:45:00	USER				Held meeting with all personnel in convoy to discuss directions and hazards associated with drive, all fit to drive.
Event	29	Depart Location for Service Center or Other Site	Depart Location for Service Center or Other Site	3/7/2019	11:00:00	USER				Pre journey management prior to departure.

3.0 Attachments

3.1 Prosper Farms 4-65 11-12 3BH Production – Job Chart with Events



3.2 Prosper Farms 4-65 11-12 3BH Production – Job Chart without Events

