		MEASURED DEPTH SPECTRAL GAMMA ISOTOPE LOG	
Company: CONFLUENCE DJ LLC Well: DESHA 4-15-1 Field: WATTENBURG County: WELD State: CO		COMPANY: CONFLUENCE DJ LLC WELL: DESHA 4-15-1 FIELD: WATTENBURG COUNTY: WELD STATE: CO	
Permanent Datum: GROUND LEVEL Elevation: 5078 ft Log meas. from: KELLY BUSHING 16.0 ft above Perm. Datum Drill. meas. from: KELLY BUSHING		API No. 05-123-47343 Location LAT:40.002280 LONG:-104.676800 SEC 33 TWP 1N RNG 65W 635' FSL & 450' FWL	Other Services NEUTRON-DENSITY PROPAGATION RESISTIVITY
Date	22-AUG-2018		
Run No.	1 (HORIZONTAL)	TVD	
Depth Driller	11504.0 ft	7119.5 ft	
Depth Logger	11504.0 ft	7119.5 ft	
Bottom Logged Interval	11033.0 ft	7142.0 ft	
Top Logged Interval	6567.0 ft	6512.8 ft	
Casing Driller	1560.0 ft	1559.8 ft	
Casing Logger	NA	N/A	
Bitsize	8.75 in		
Type Fluid in Hole	OBM		
Density / Viscosity	9.8 ppq	54 sec/qt	
pH / Water Loss	N/A	N/A	
Source of Sample	N/A		
Rm at Meas. Temp.	N/A		
Rm at Meas. Temp.	N/A		
Rmc at Meas. Temp.	N/A		
Source Rmf/Rmc	N/A	N/A	
Rm at BHT	N/A		
End Circulation	21-AUG-2018 @ 09:10		
Logger on Bottom	21-AUG-2018 @ 12:25		
Max. Recorded Temp.	202.9 °F		
Equip. No / Location	DL-313 OKC		
Recorded by	J. SLAFF	J. BERGERON	
Witnessed by	C. MONTROYA		

Fold Here

In making interpretations of logs, Contractors employees will give the Customer the benefit of their best judgement, but since all interpretations are opinions, based on inferences from electrical or other measurements, Contractor cannot, and does not guarantee the accuracy or the correctness of any interpretation.

ANTARES WinAPIot Software - Copyright (c) 1997 - 2008 ANTARES Datensysteme GmbH

REMARKS

TOOLS PUMPED DOWN FROM SURFACE; LOGGING PERFORMED WHILE TRIPPING OUT
COMPENSATED NEUTRON-DENSITY PRESENTED LIMESTONE MATRIX
MAX DEVIATION: 96.67 DEG @ 8005.0 ft
DRILLING RIG: XTREME 24
SURFACE CASING SIZE: 9.625 in, 36.0 lbm/ft FROM 0.0 ft TO 1560.0 ft
BITSIZE: 8.5 in FROM 1560.0 ft TO 11504.0 ft
ALL LOG DEPTHS WERE RECORDED WITH EDR (PASON), AND CORRECTED TO PIPE TALLY

EQUIPMENT DATA					
Run	Trip	Instrument	Serial No.	Series No.	Distance to Reference
1	1	TELEMETRY	3102018		476.5 ft
1	1	SGR	1460017		
1	1	GR-CN	1473020 U	1473020 L	
1	1	KNUCKLE	0813002		
1	1	DENSITY	1481006		
1	1	PDT	RX0013		436.2 ft
1	1	STEEL COLLAR	DL-45XH-6		
1	1	STEEL COLLAR	DL-L1972-XH-5		
1	1	OMEGA	DOA65007		

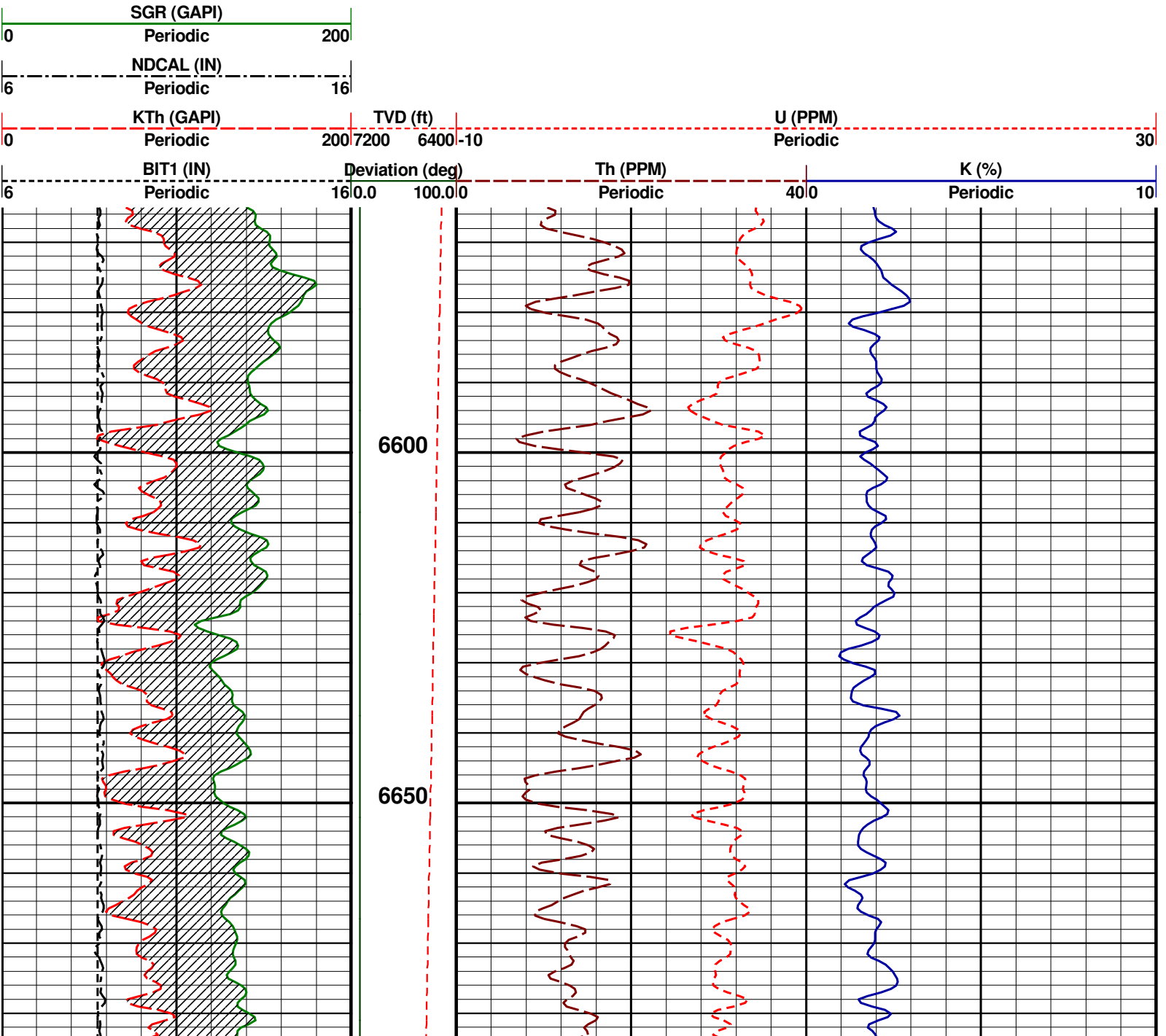
		OMEGA	RSA65007		
		Am241Be / Cs137	77812	79967B	

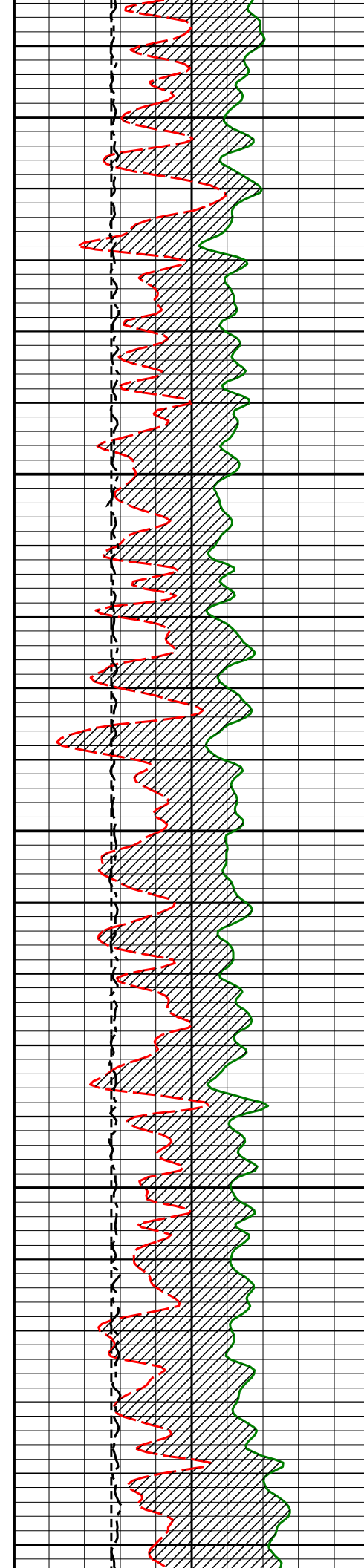
5" MAIN PASS

Company : CONFLUENCE DJ LLC
Well : DESHA 4-15-1
Scale : 1 : 240
Depth in : Feet
Software : WinAPlot Ver. 5, 87, 2, 0

Date : 22-AUG-2018
Time :
Remarks :

File Name : 834_05-123-47343_MAIN MD





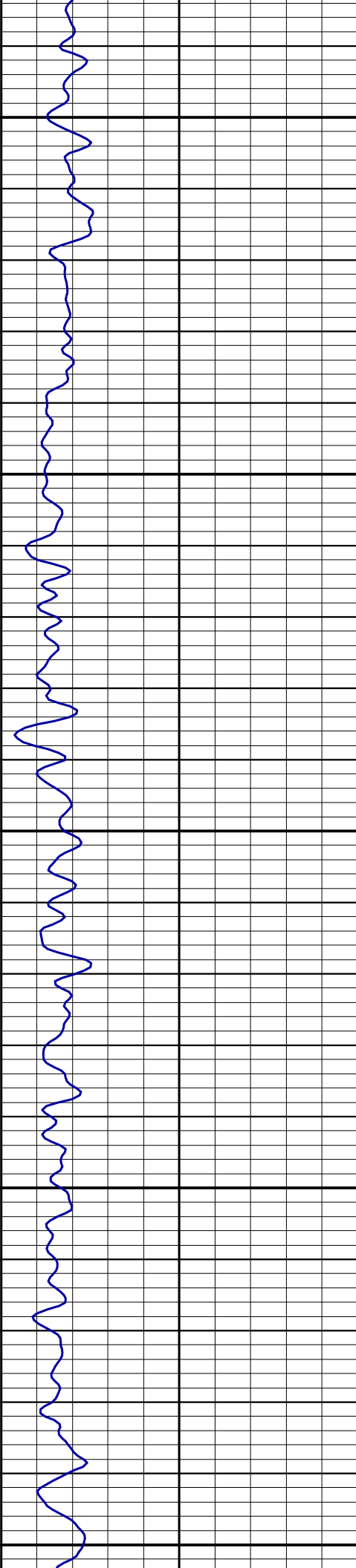
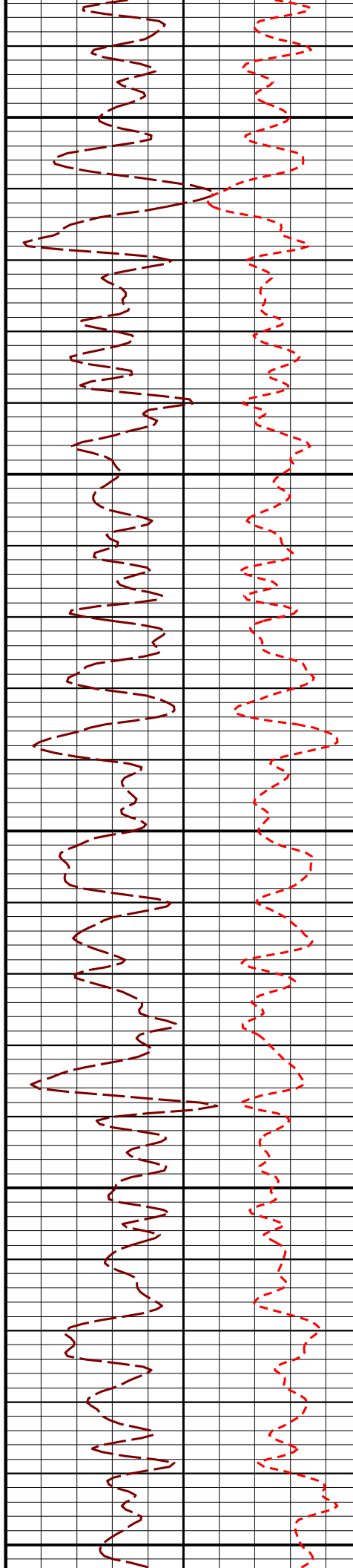
6700

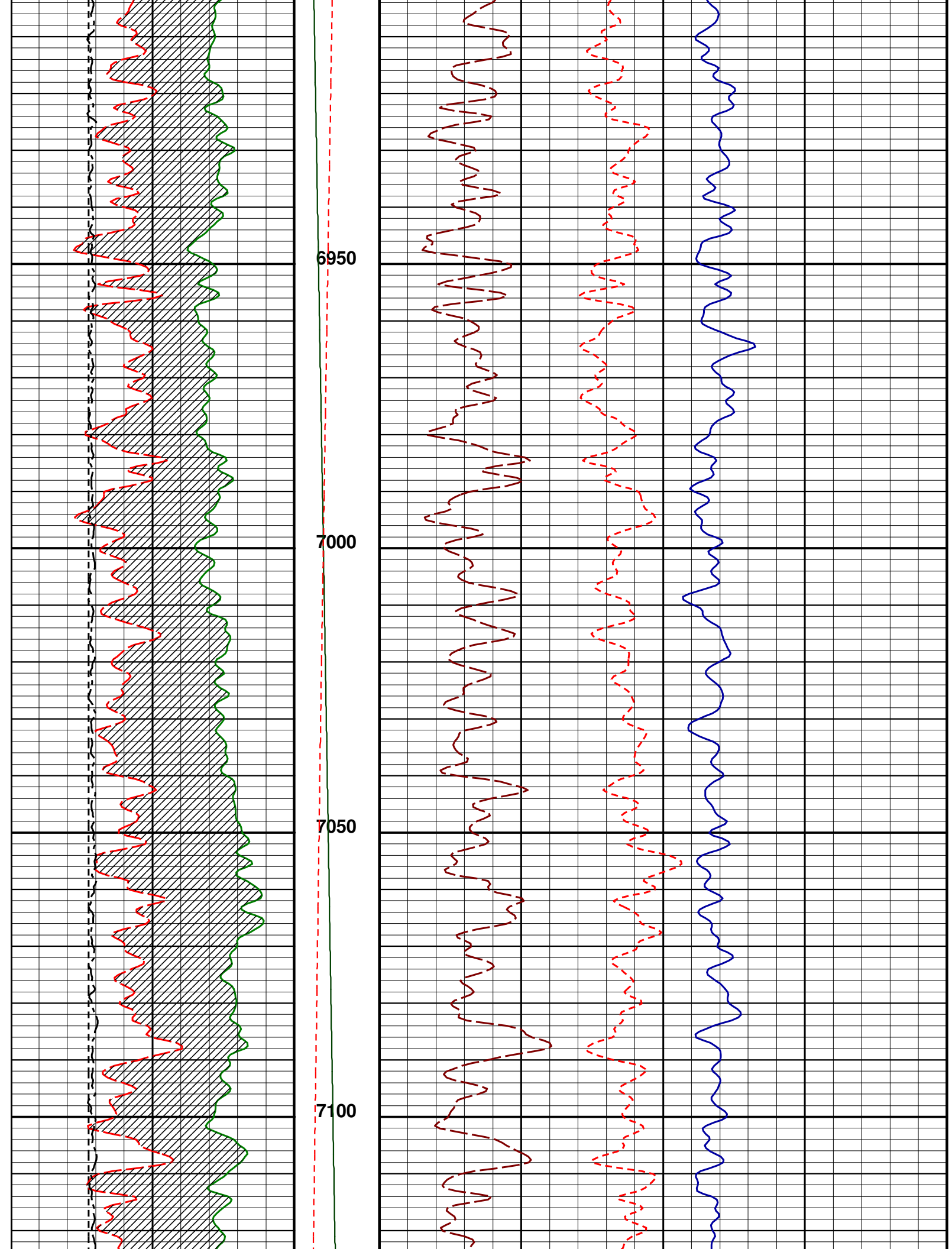
6750

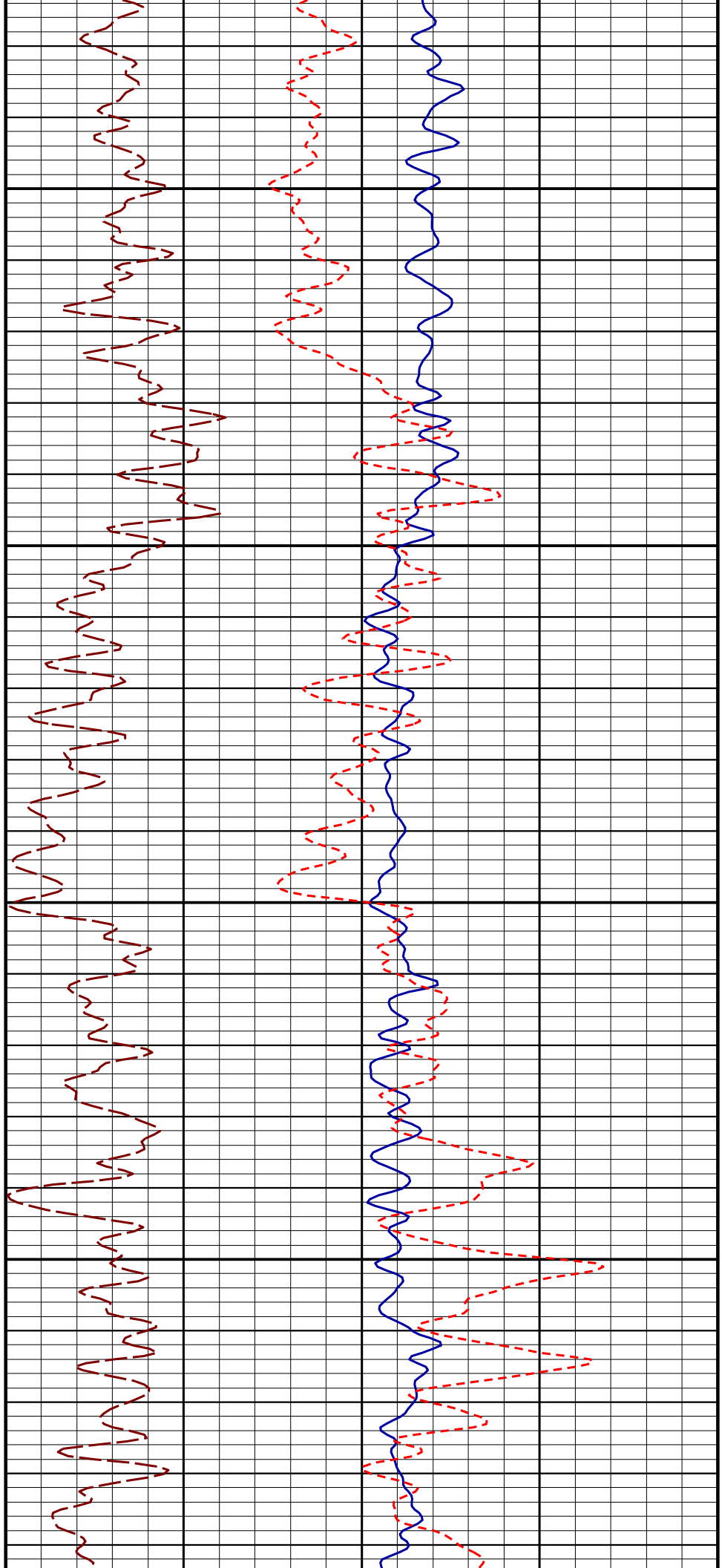
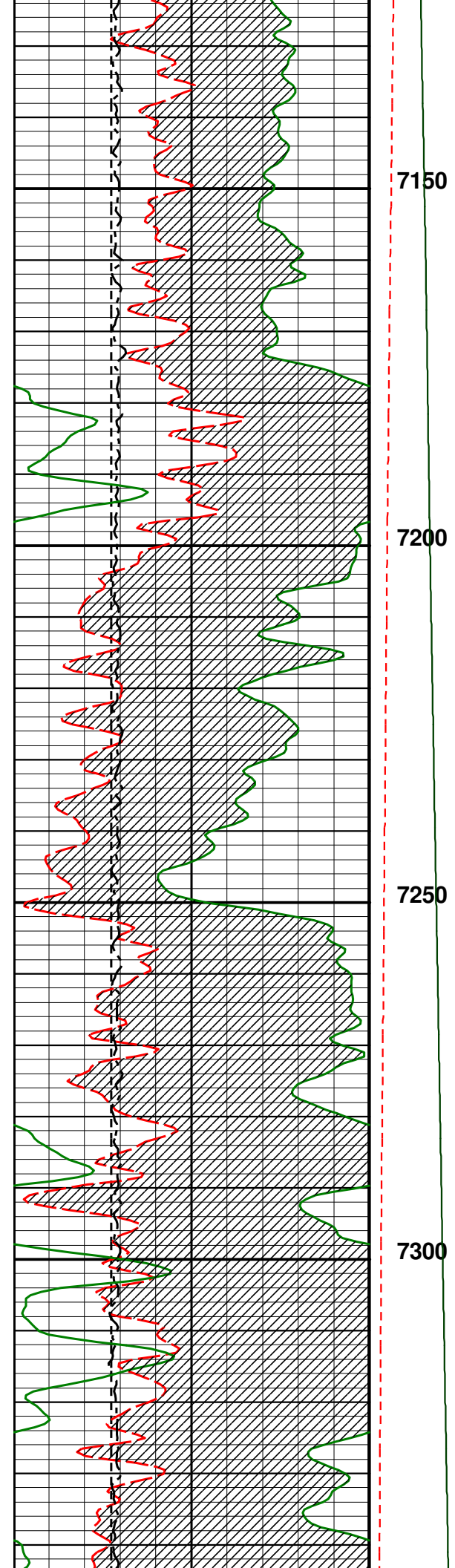
6800

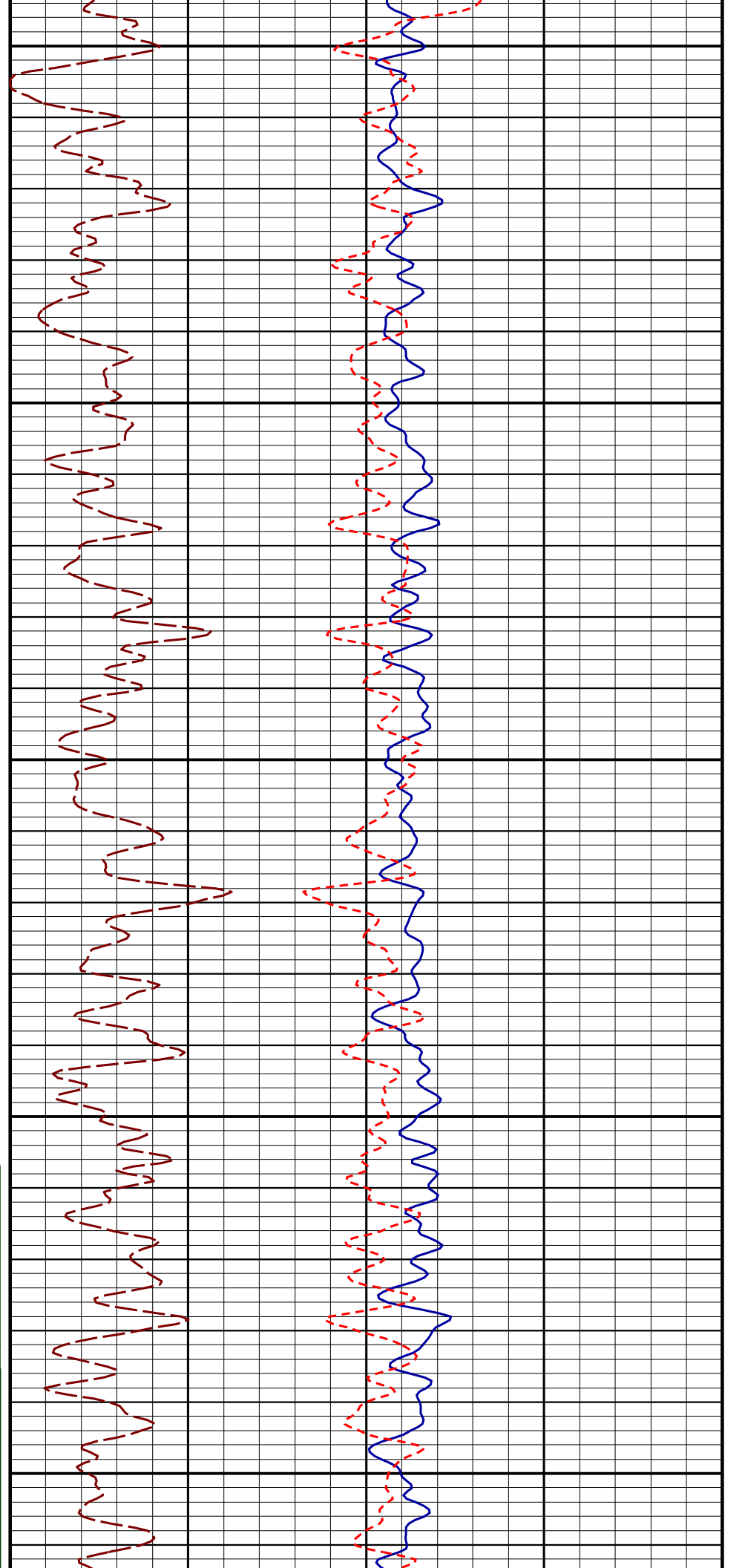
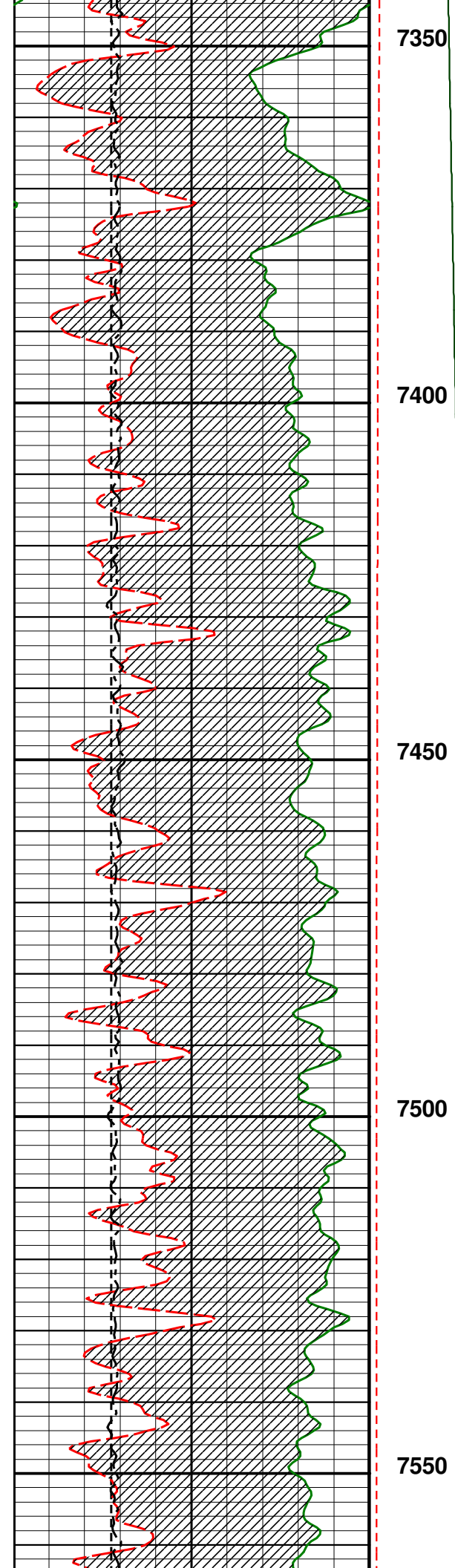
6850

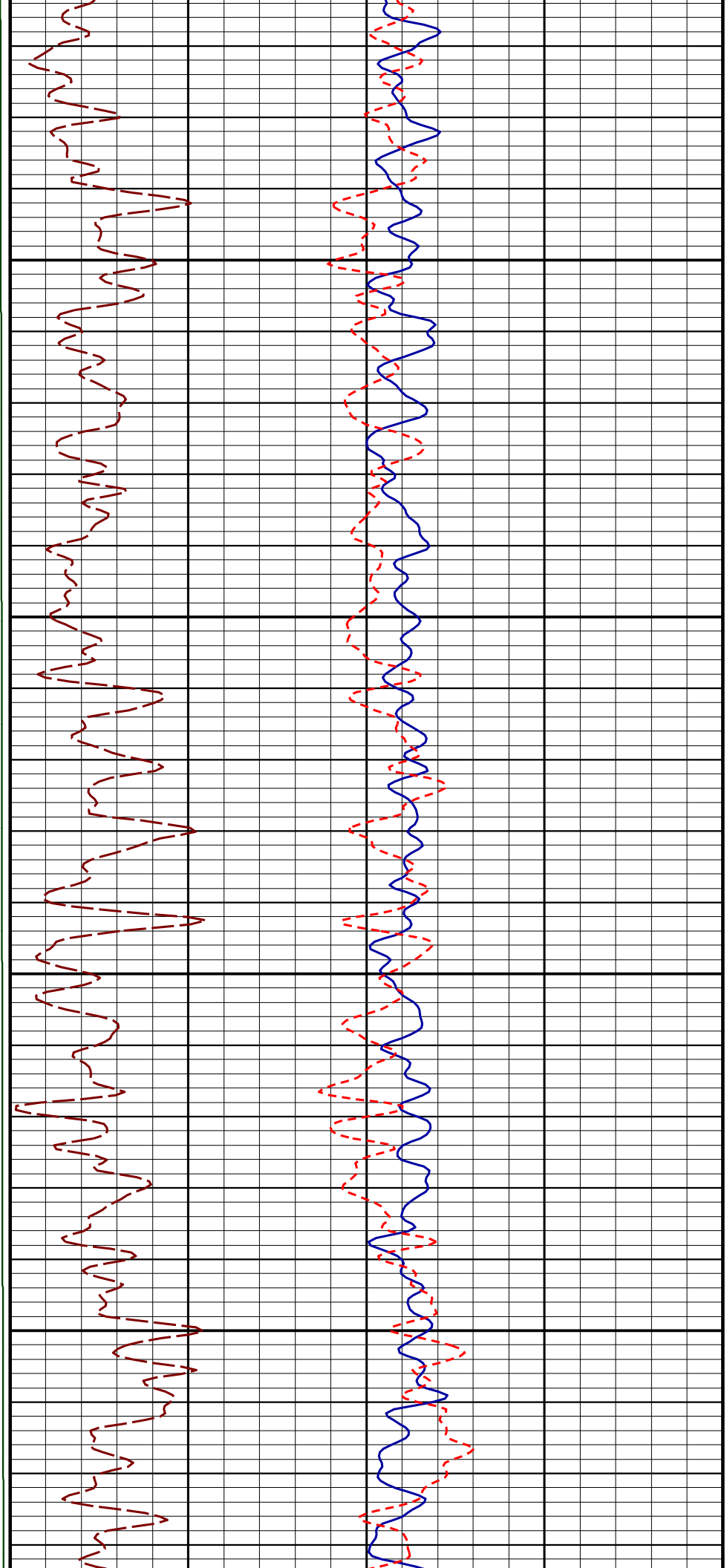
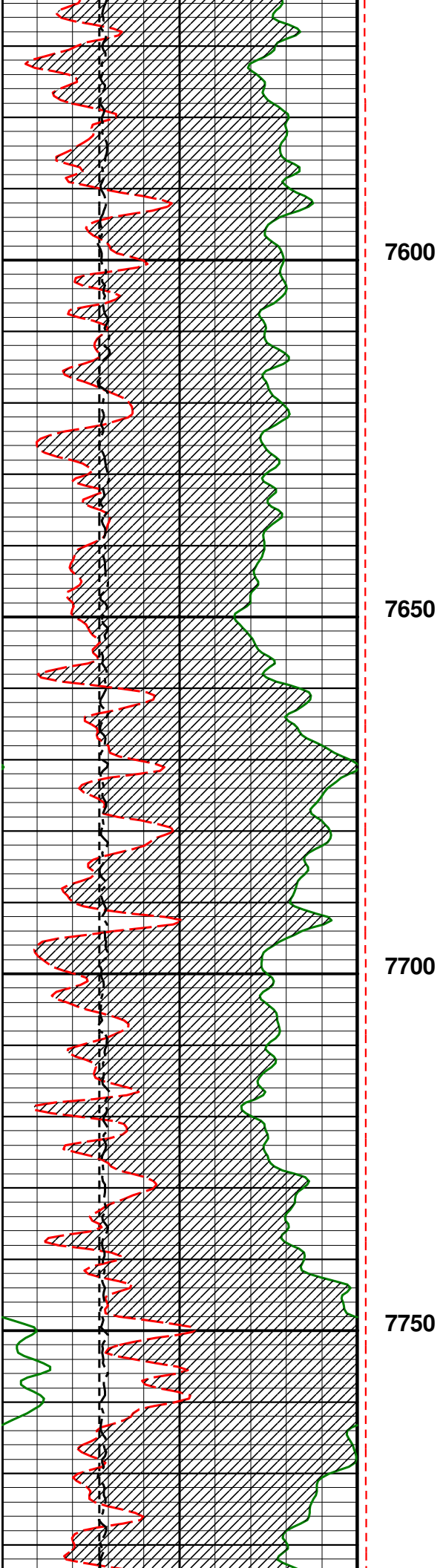
6900

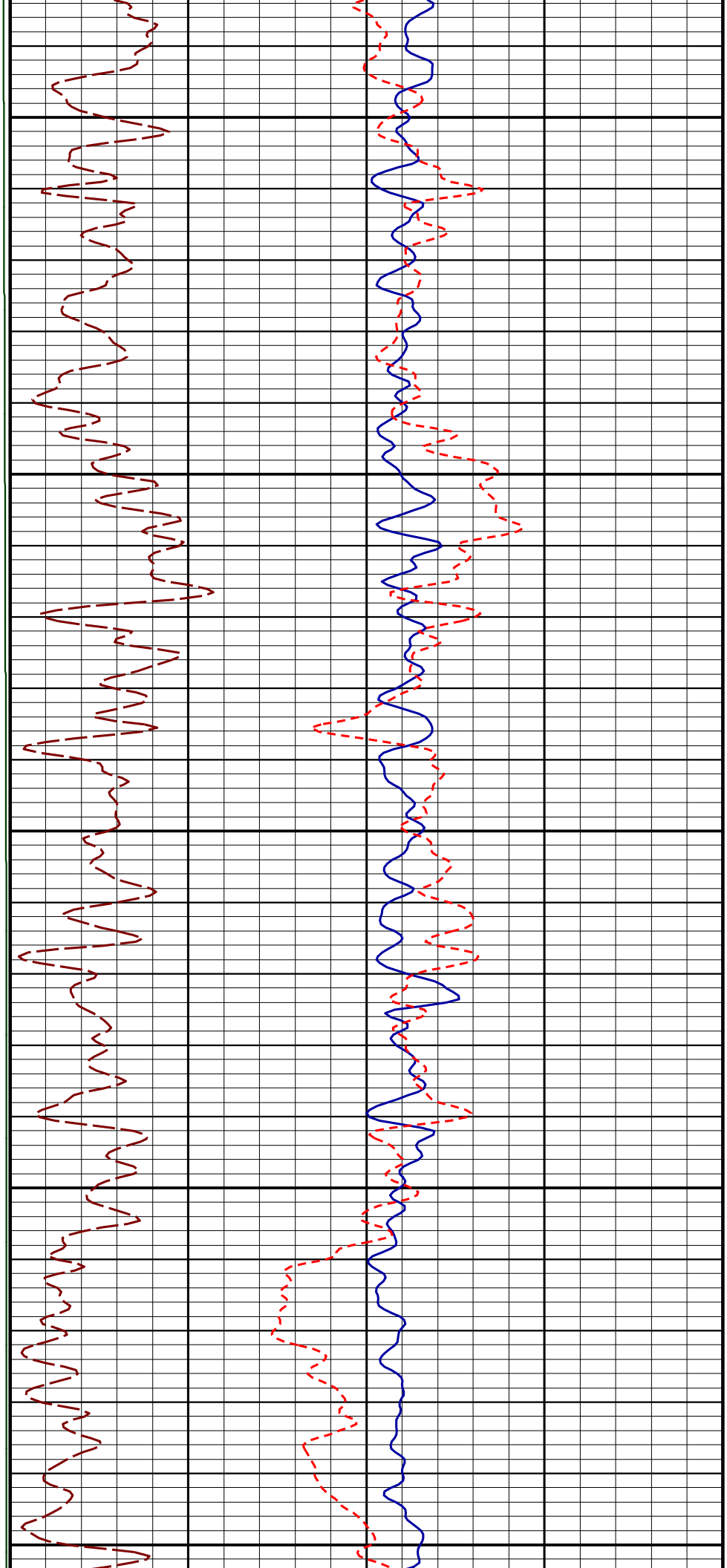
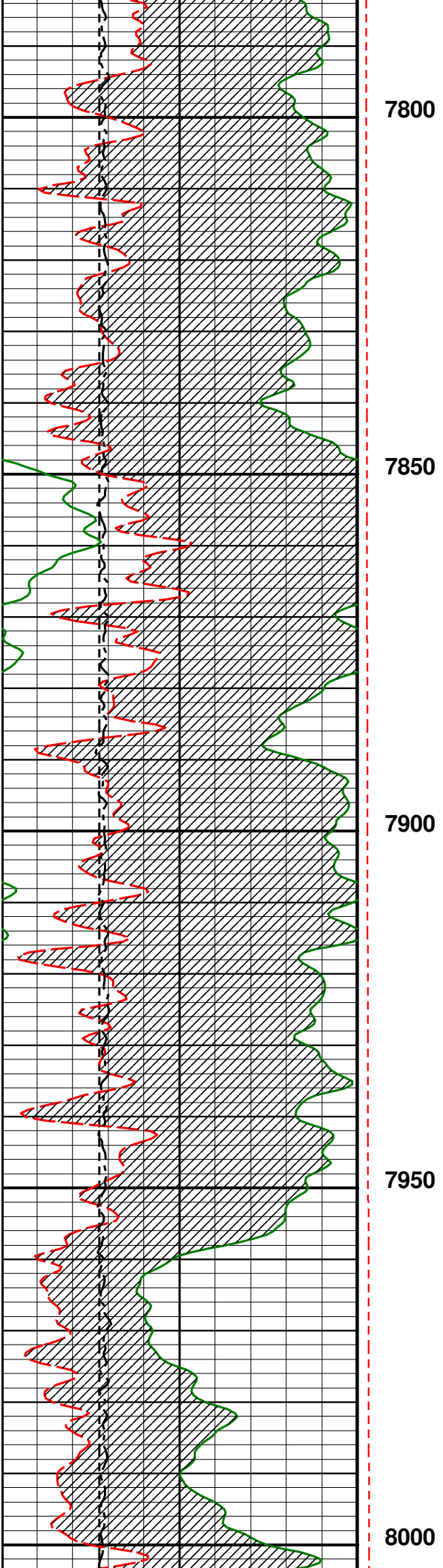


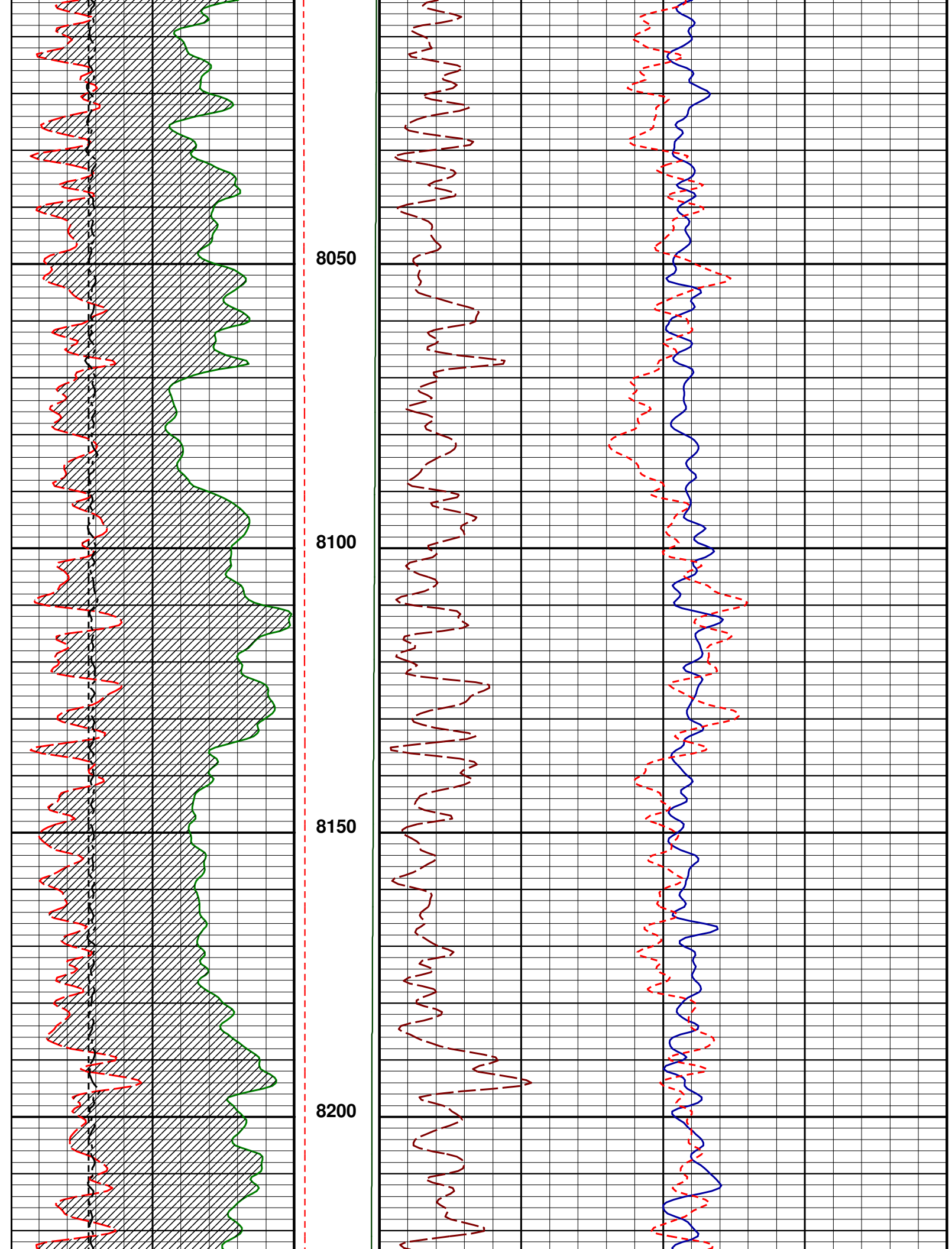


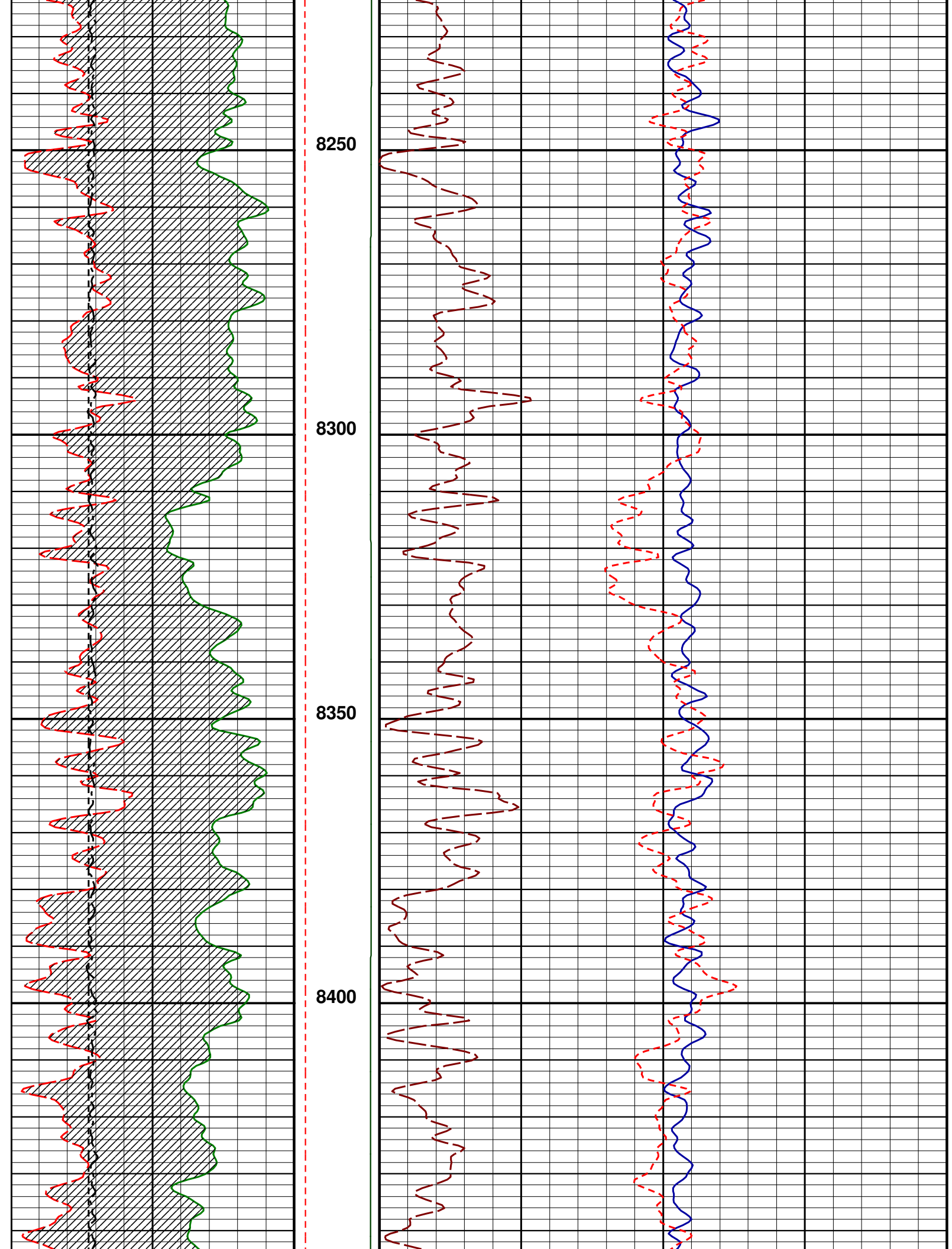


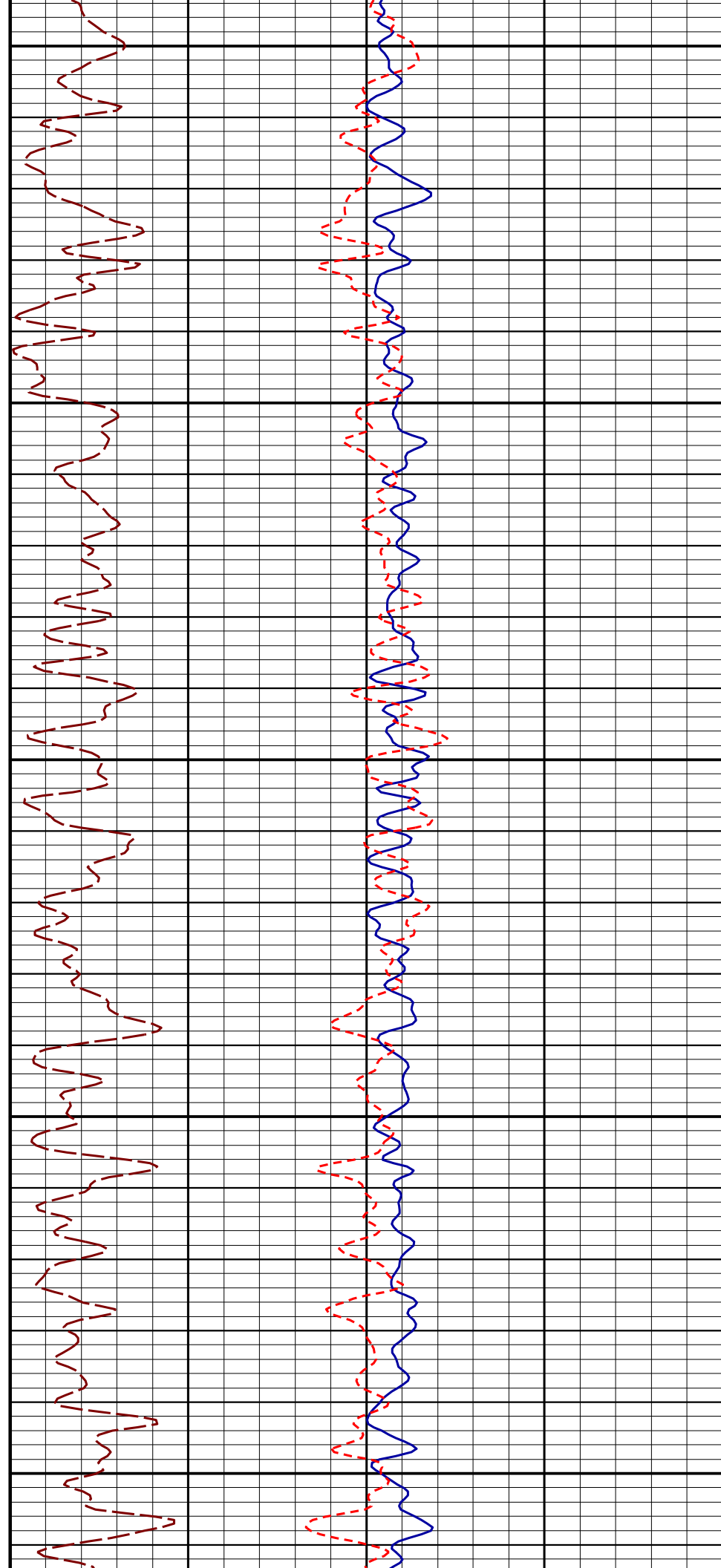
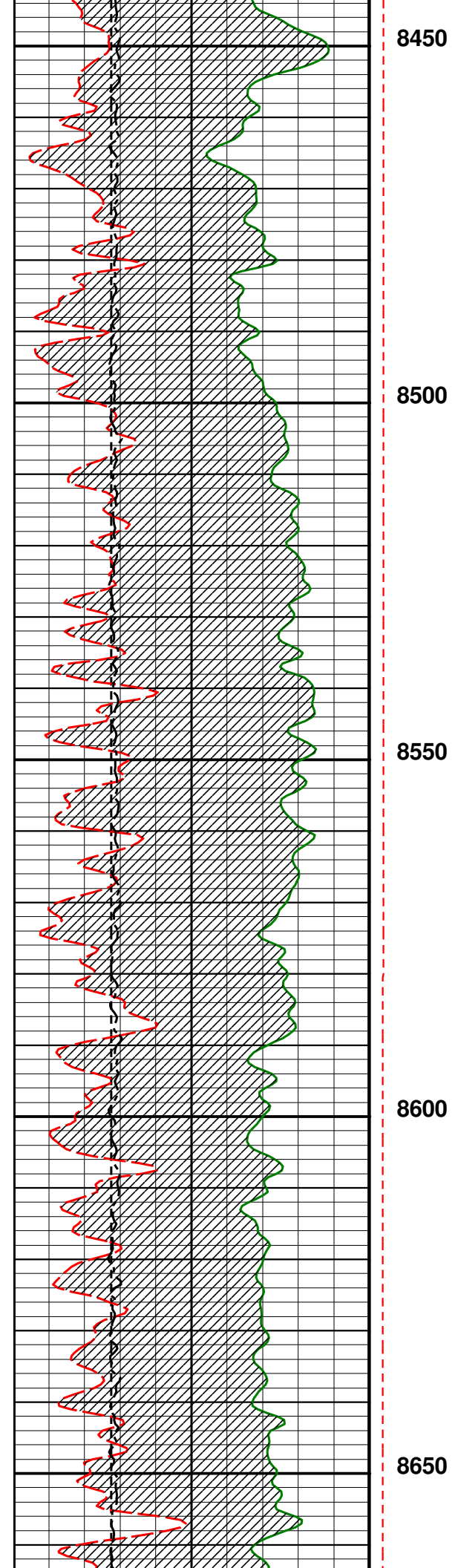


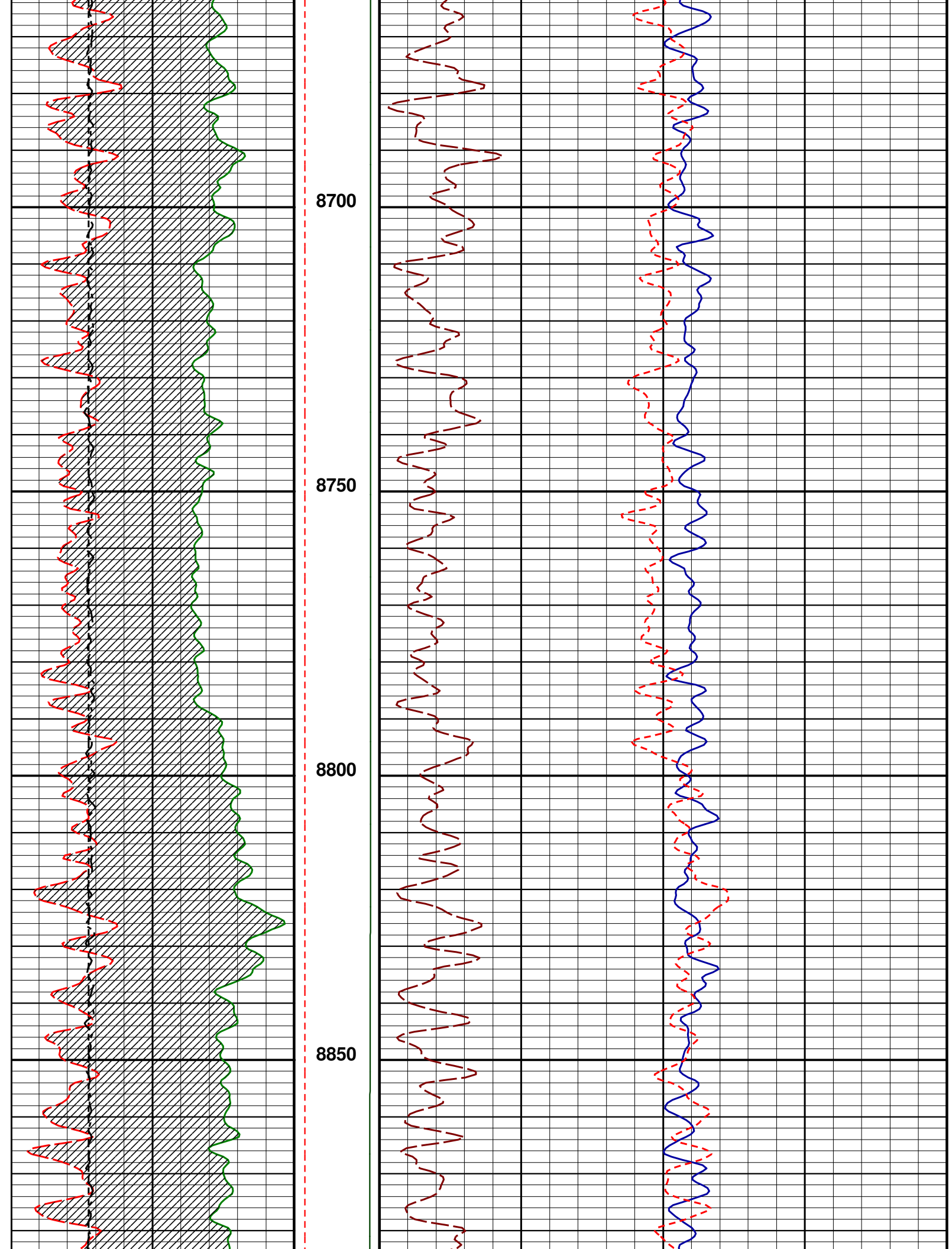


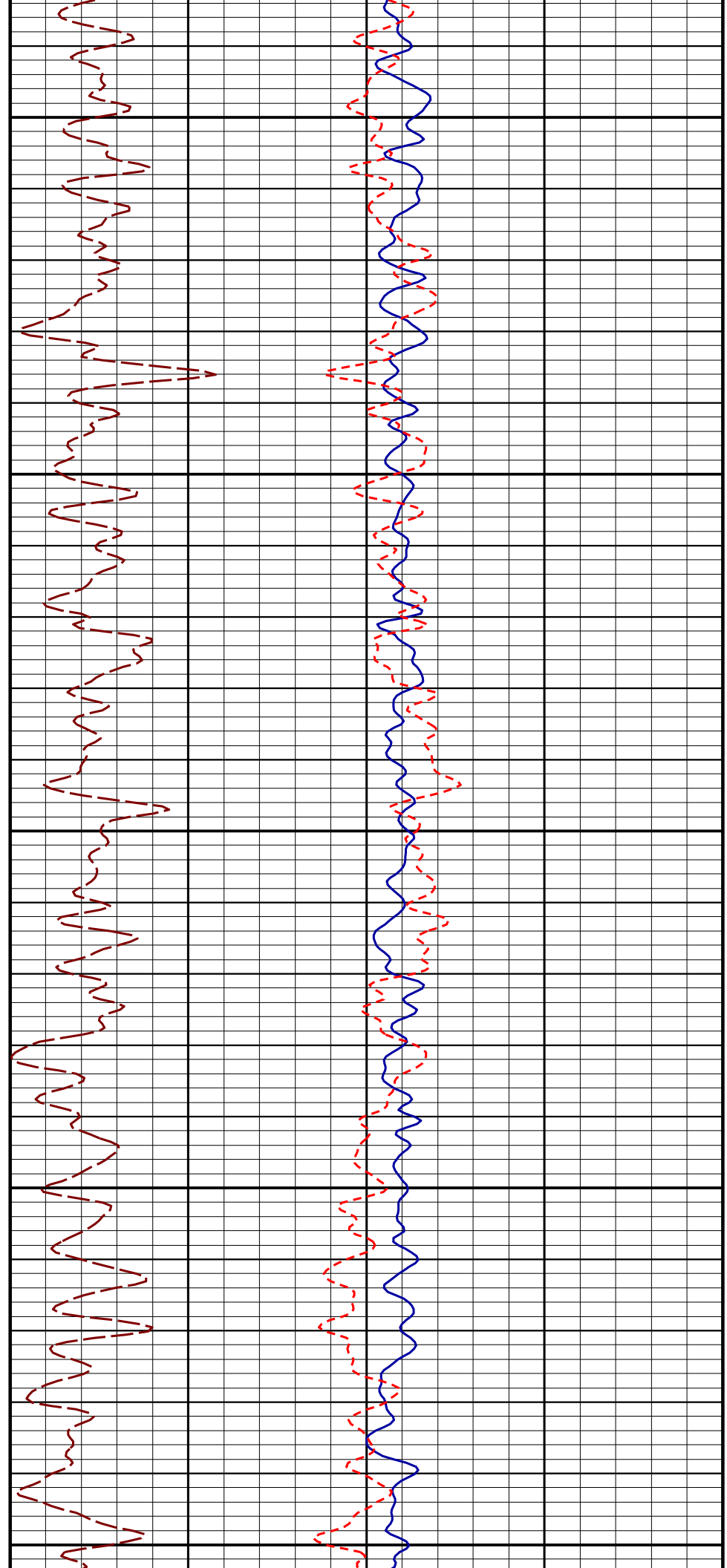
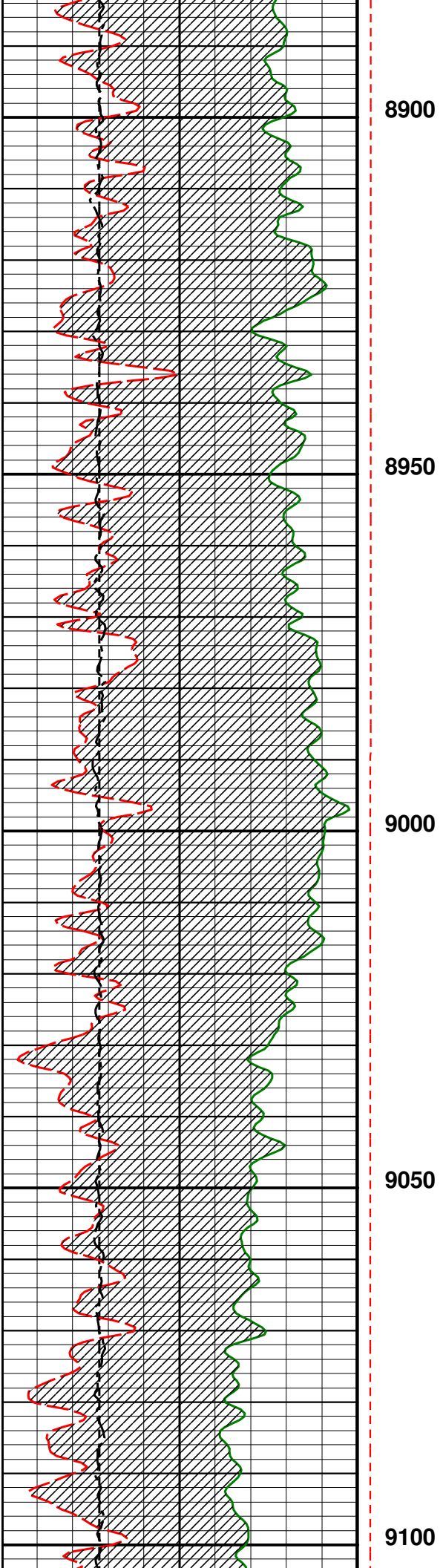


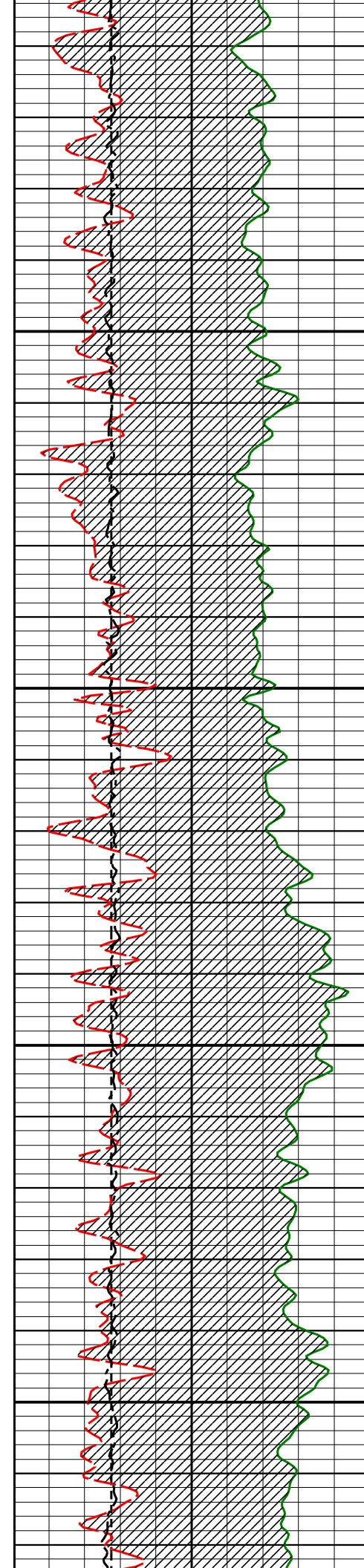










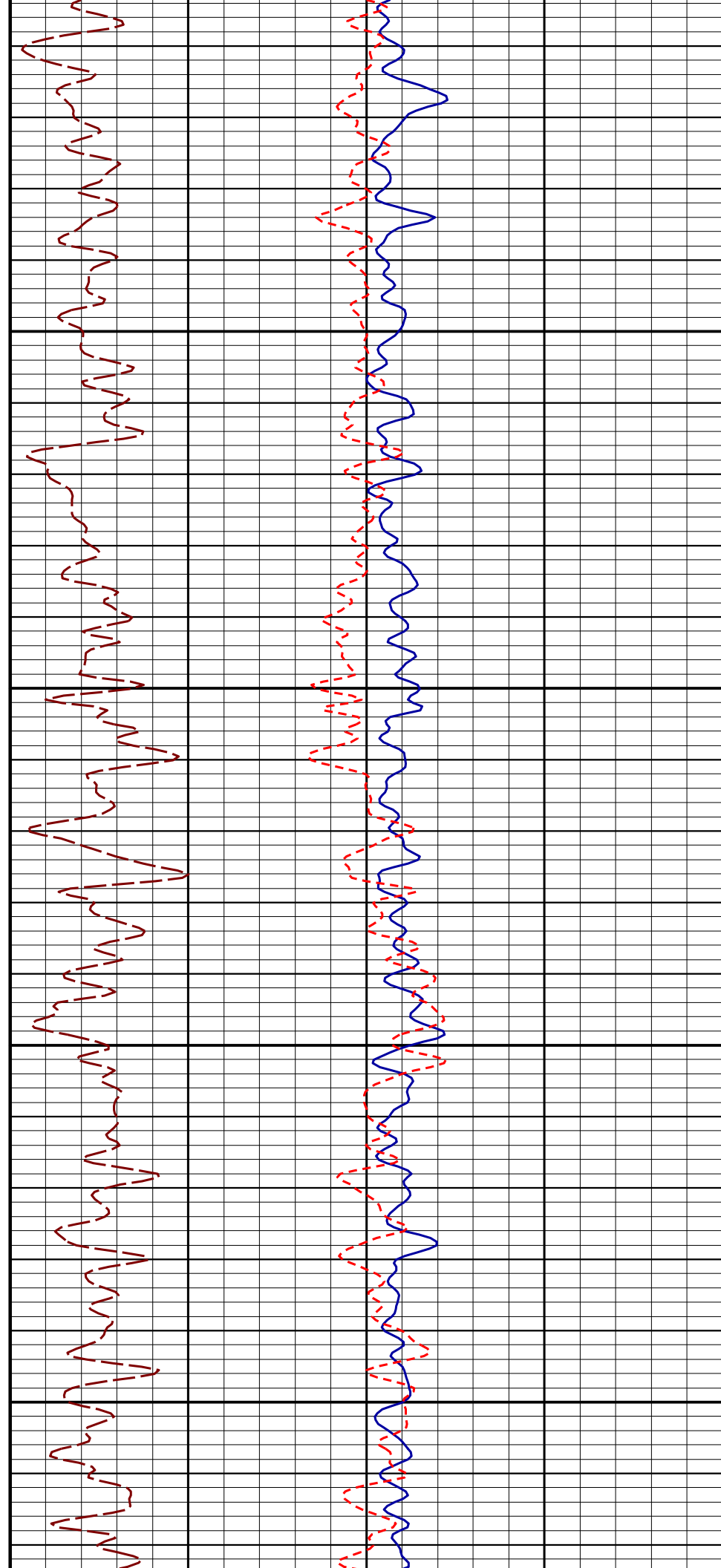


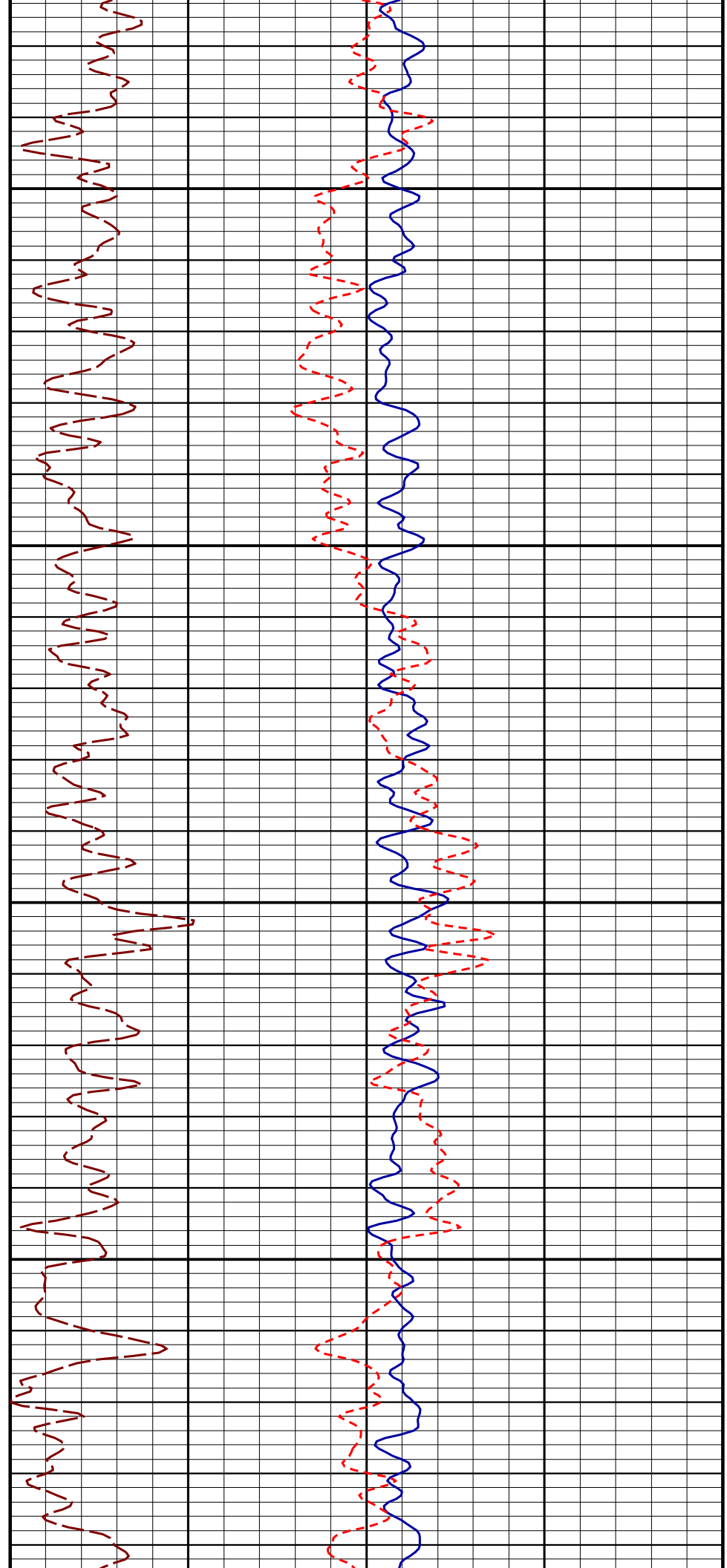
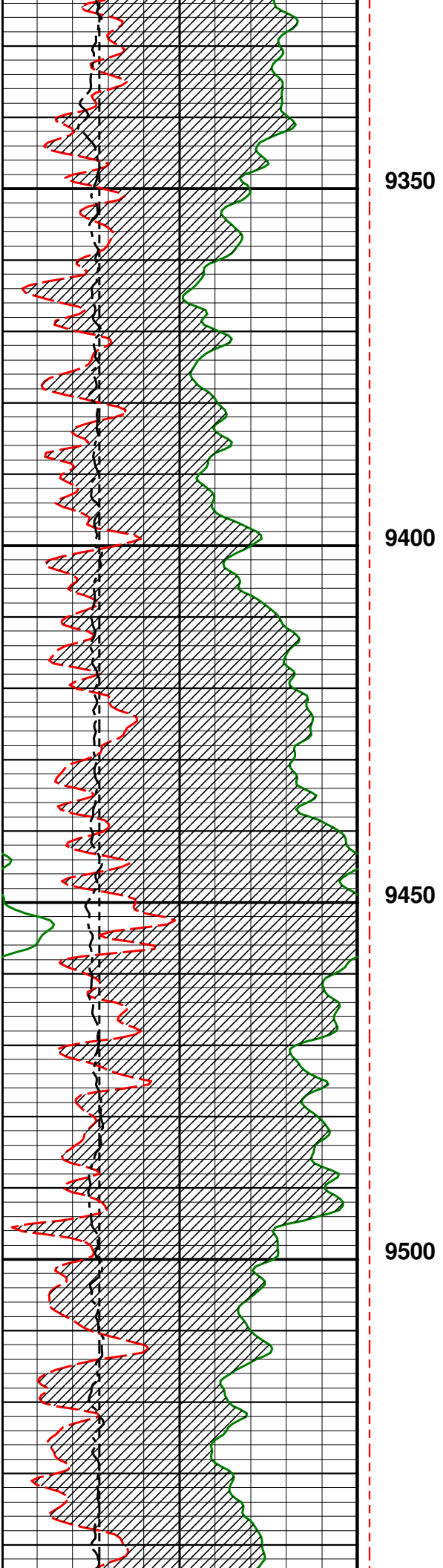
9150

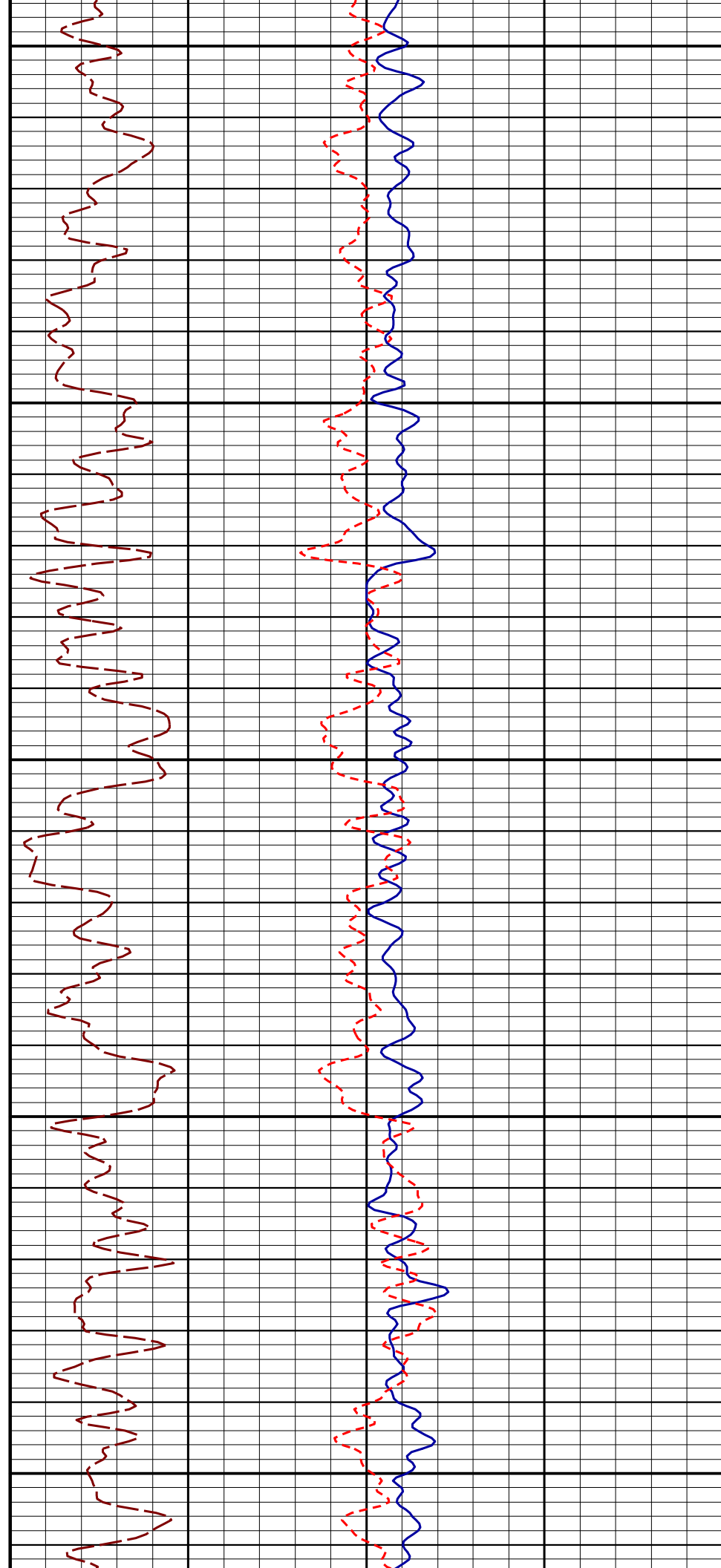
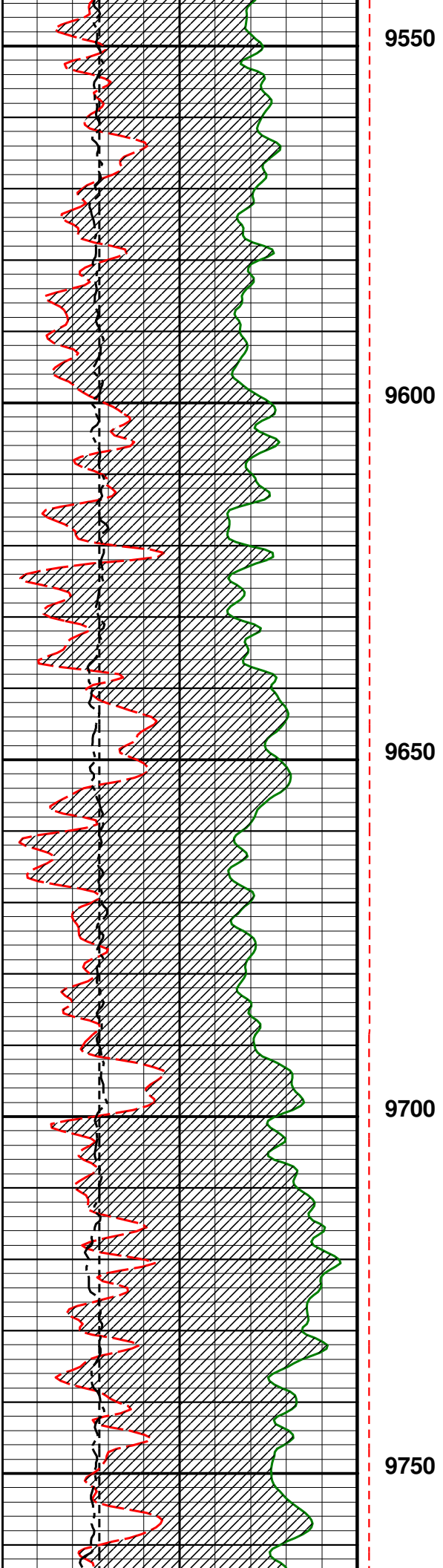
9200

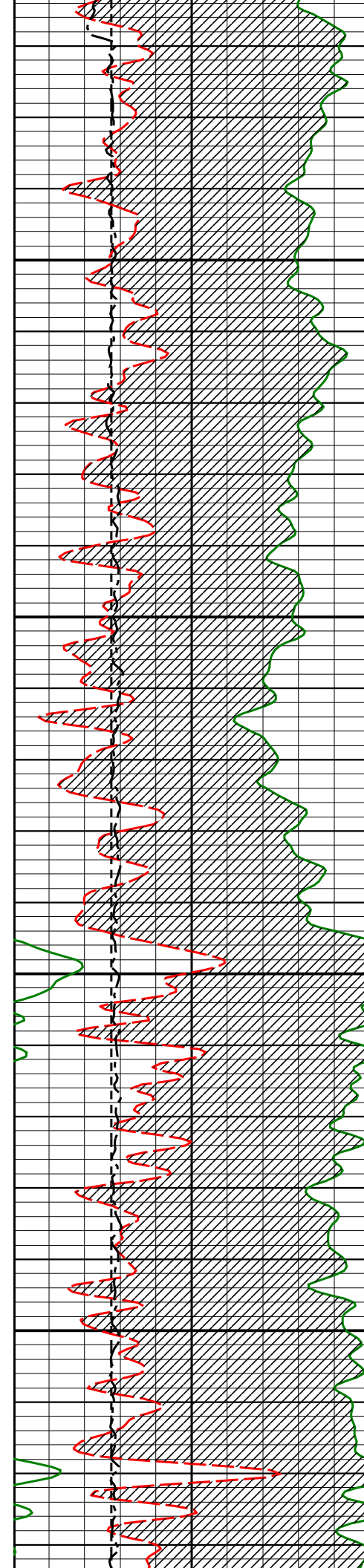
9250

9300







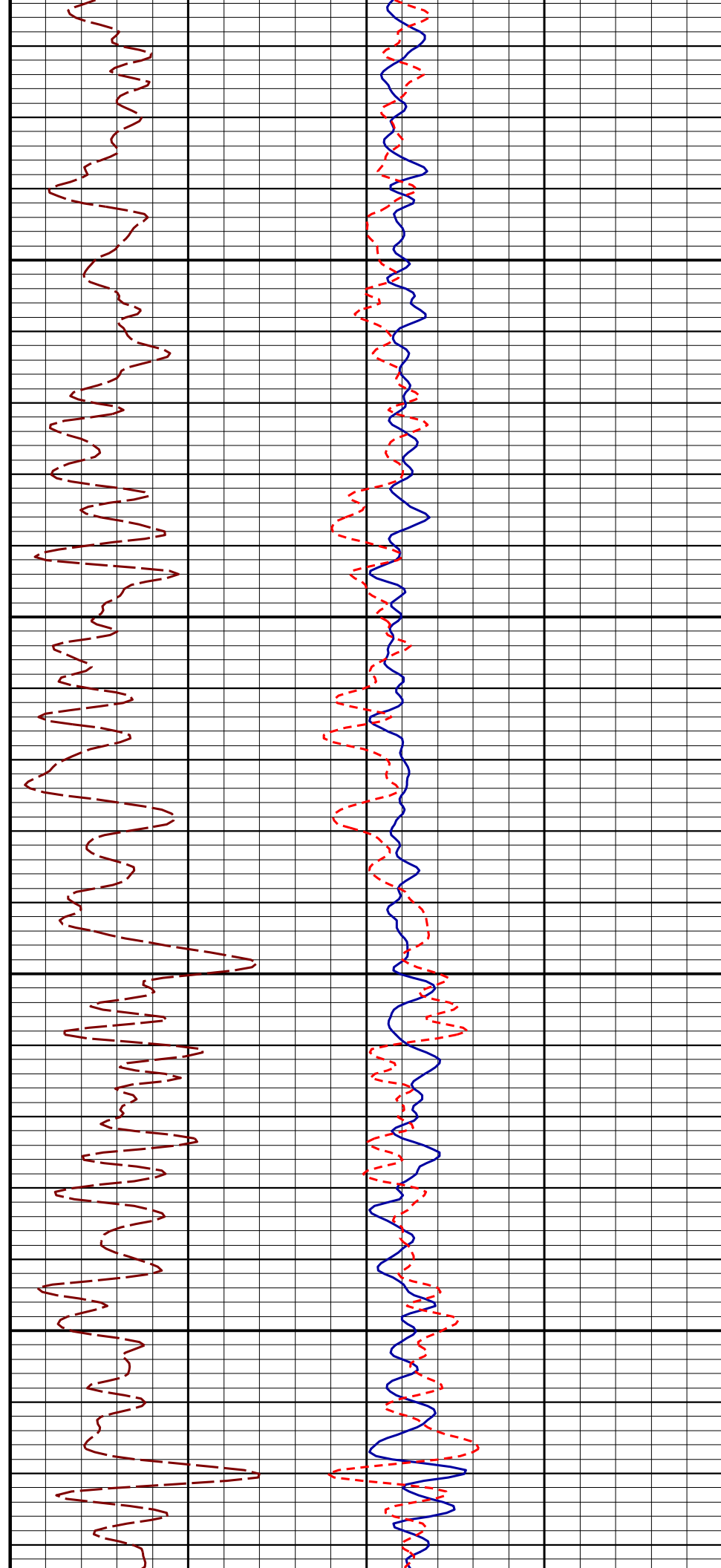


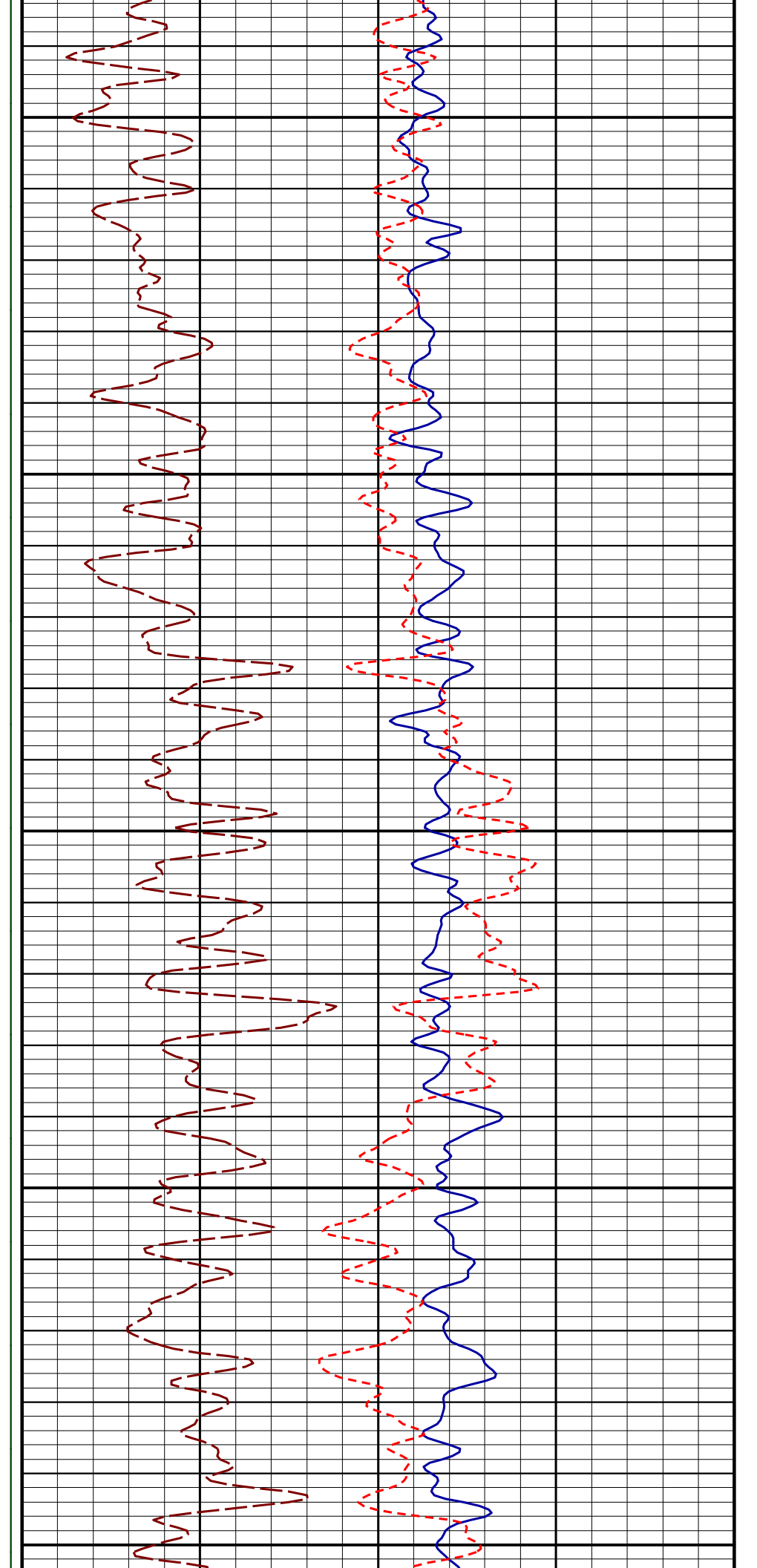
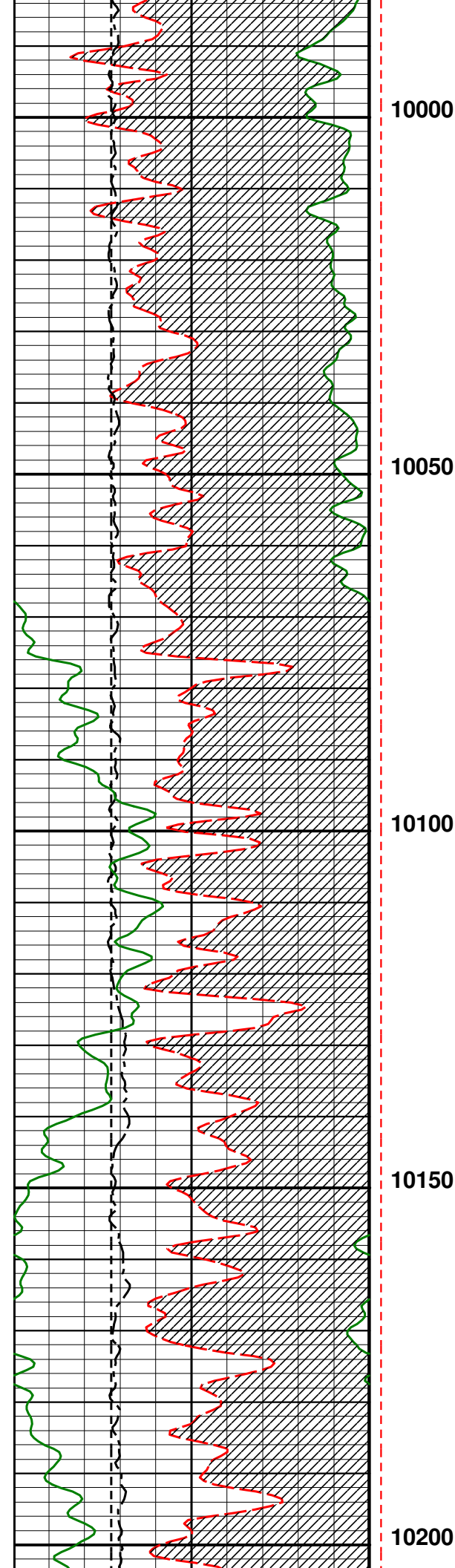
9800

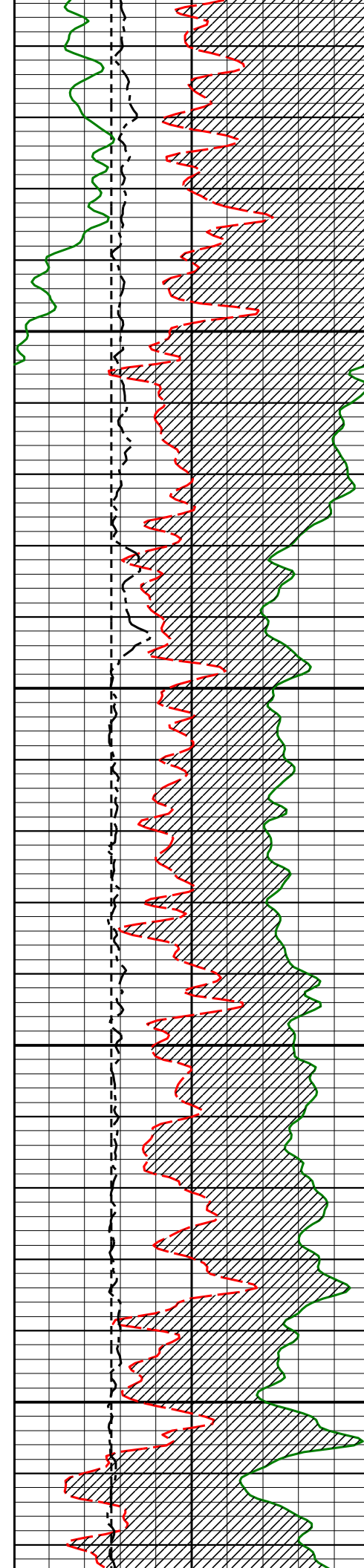
9850

9900

9950





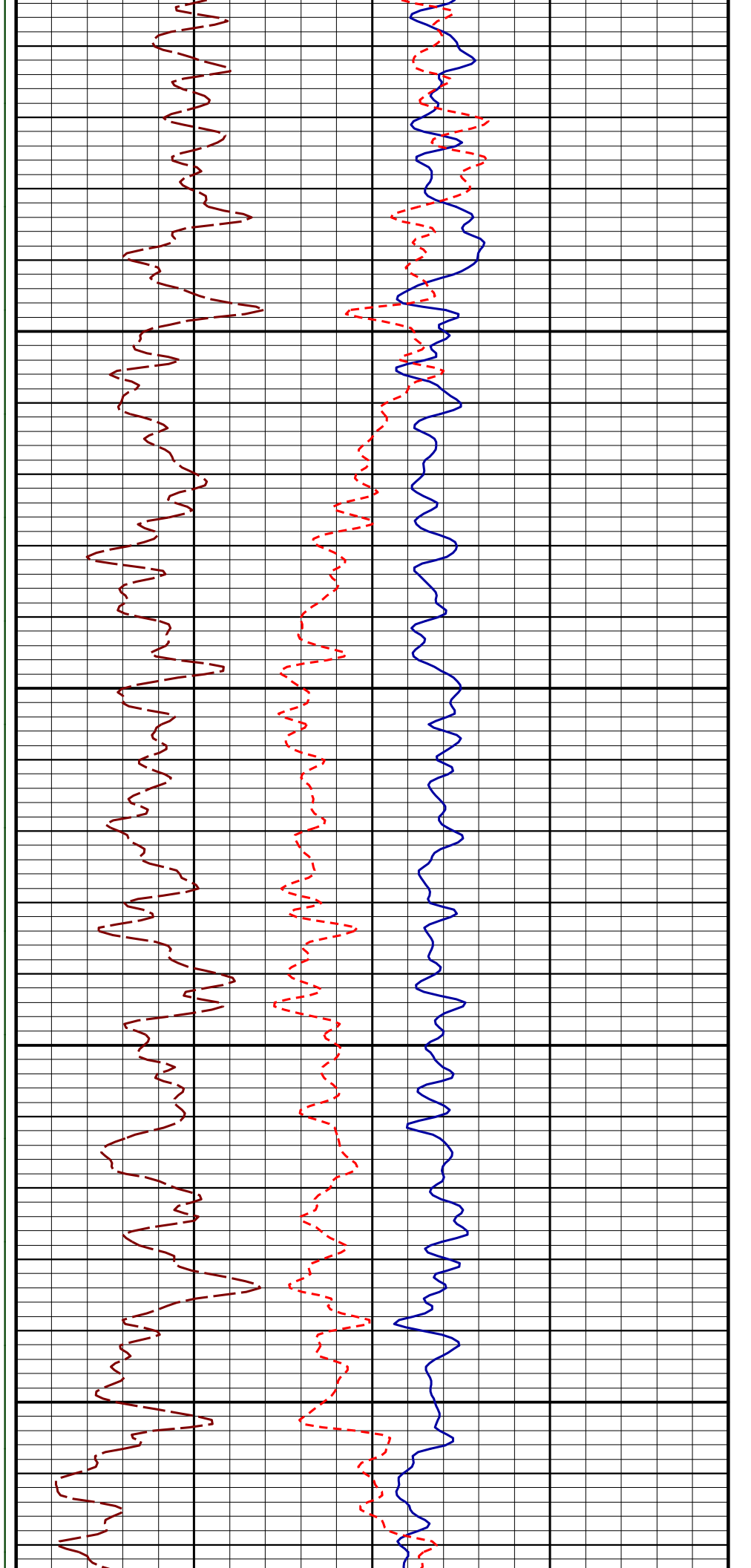


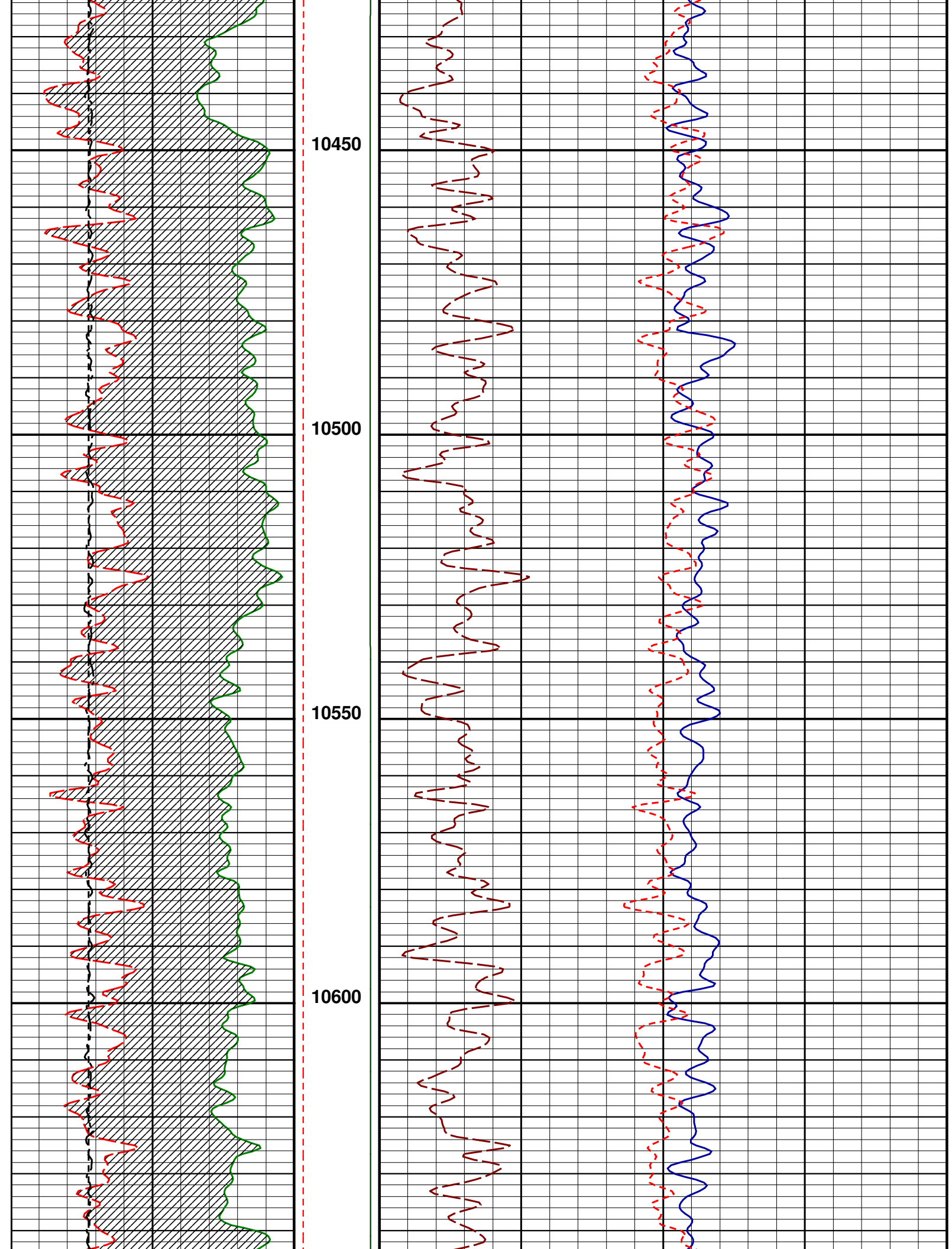
10250

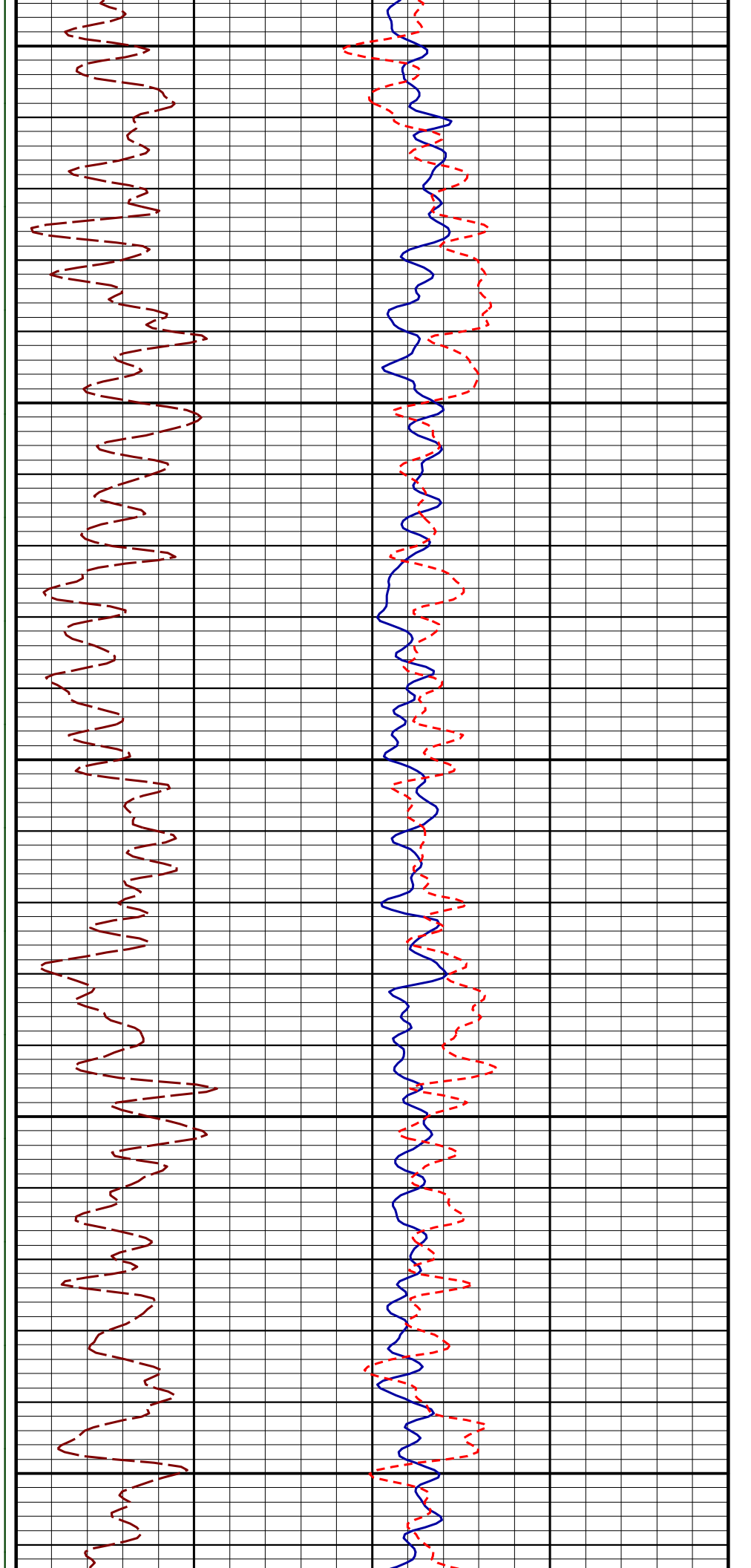
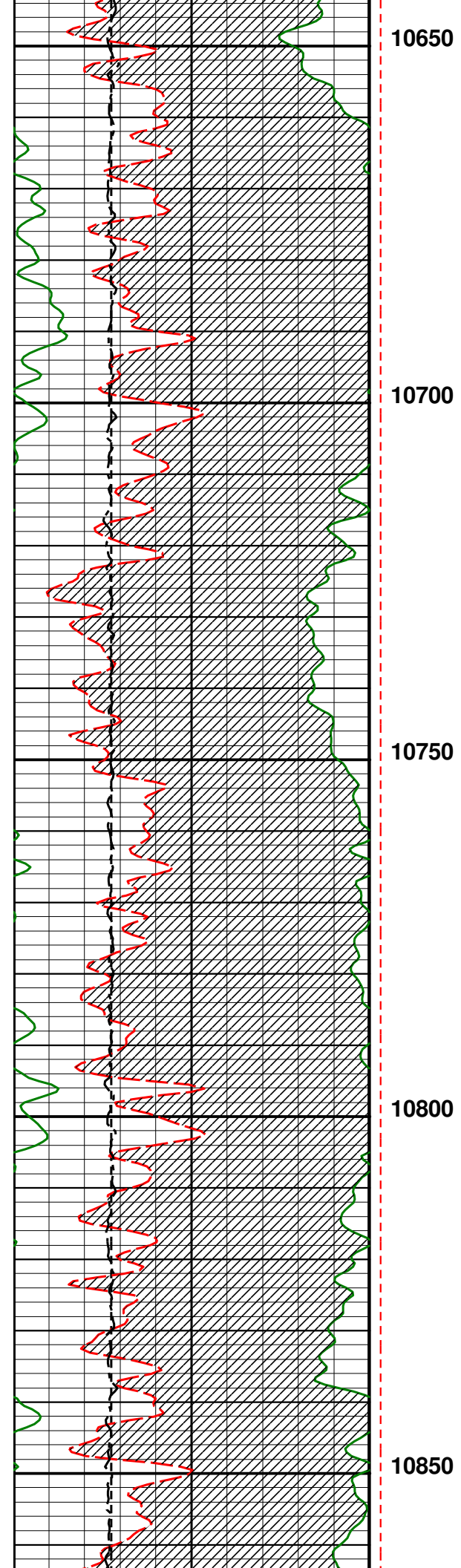
10300

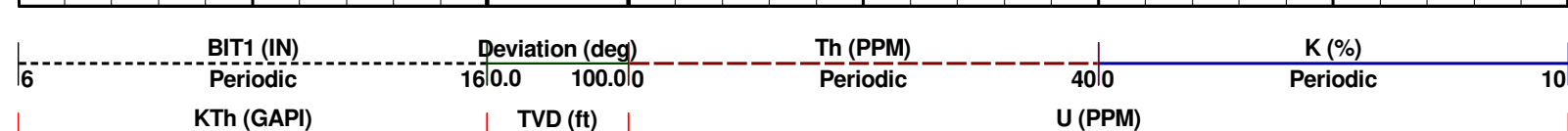
10350

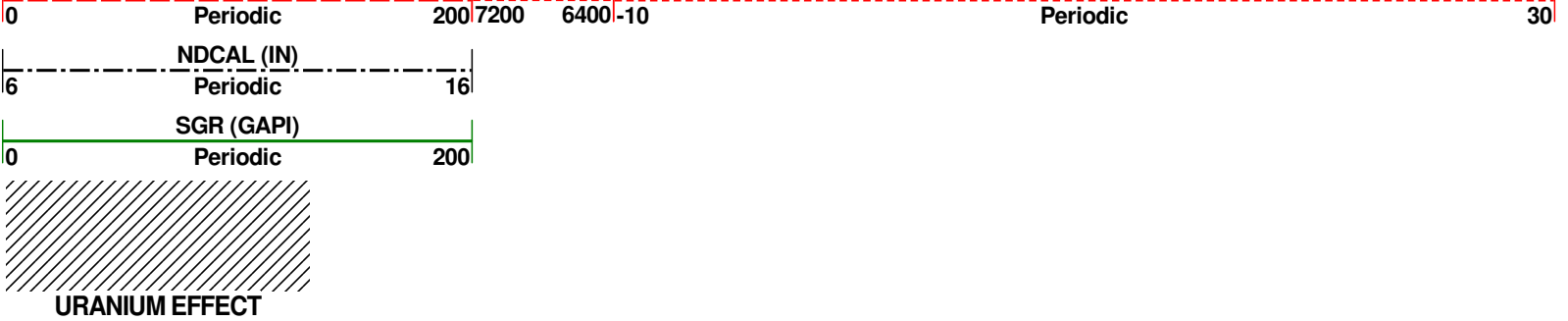
10400











File : C:\Users\Jake Slaff\Desktop\Post Job\MLT_1473_020.cvf

Tool name : Dual NeutronAsset : 020Series : 1473Source ID :

Gamma

Gamma Calibration

TimeAug / 17 / 2018 08:53:00

Setup

Description1473020_1619-93_AUG172018_JS

Setup Version00046

Block	Raw Value	User Value	Device	Device SN	Mult.
Background	36.9237				
Jig ON	339.179				
Gamma	302.2553	249.9999 gAPI	Gamma Ray Jig	1619-93	0.8271151

Gamma Primary Verification

TimeAug / 17 / 2018 08:55:30

Setup

Description1473020_1619-93_AUG172018_JS

Setup Version00046

Block	Device	Device SN	Raw Value	User Value
Background			36.7927	
Jig ON	Gamma Ray JI	1619-93	345.015	
Gamma			254.9352 gAPI	

Tool name : Dual NeutronAsset : 020Series : 1473Source ID :

Ratio

Compensated Neutron Calibration

TimeAug / 17 / 2018 09:19:50

Setup

Description1473020_77812_2018AUG17_JS

Setup Version00046

Curve Name	pt	Raw Value	User Value	Device	Mult.
Ratio	1	16.5413	17 none	Neutron Ratio	1.027731

Compensated Neutron Primary Verification

TimeAug / 17 / 2018 09:22:34

Setup

Description1473020_77812_2018AUG17_JS

Setup Version00046

Curve Name	pt	Device	Device Value	User Value
------------	----	--------	--------------	------------

Curve Name	pt	Device	Device Value	User Value
CN	1	Neutron Porosity	23 pu	24.1332 pu
				21.1624.84

File : C:\Users\Jake Slaff\Desktop\Post Job\MLT_1481_006.cvf

Tool name : **Density**Asset : **006**Series : **1481**Source ID :

Density

Density Calibration

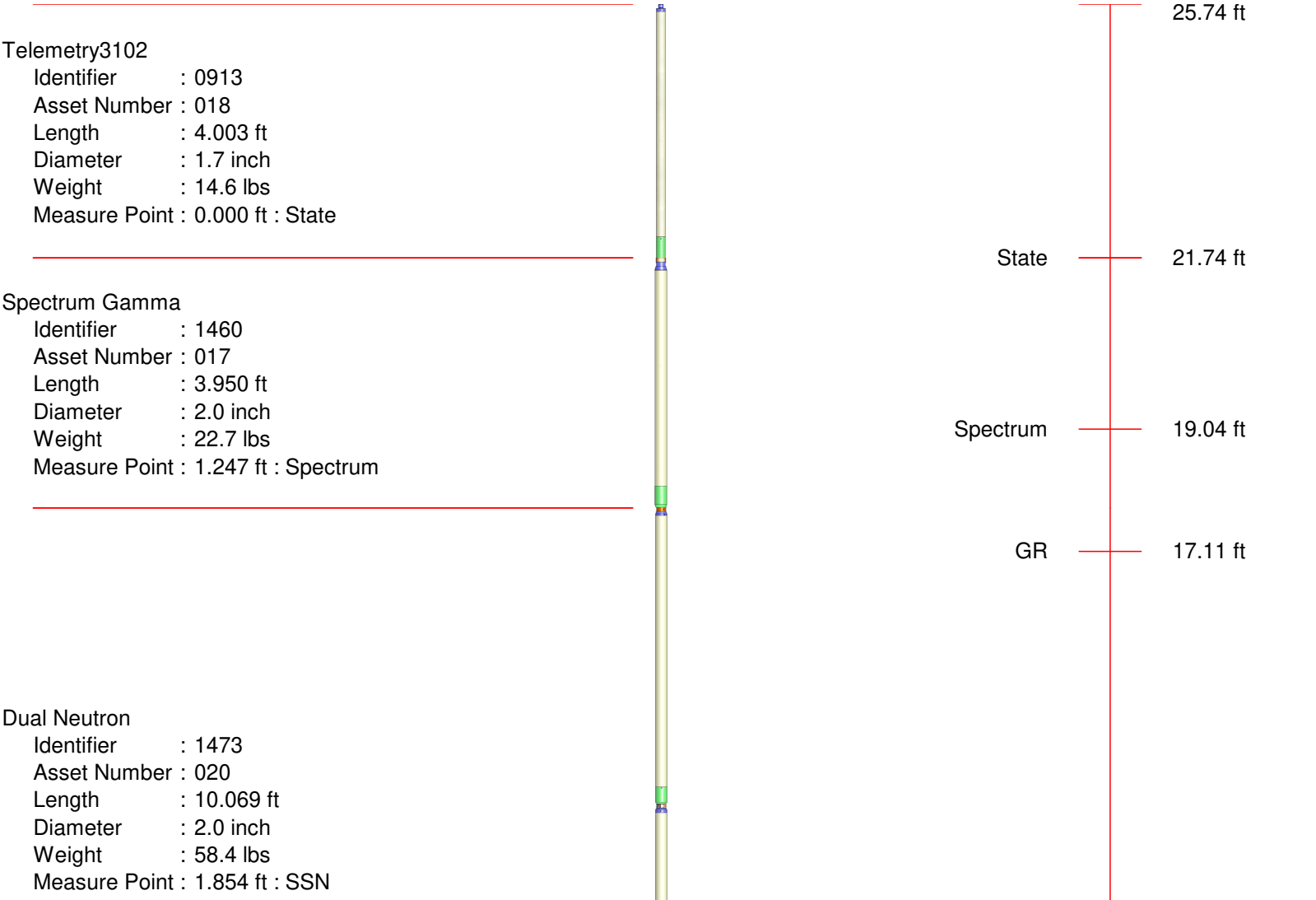
TimeAug / 17 / 2018 10:24:56

Setup

Description1481006_79967B_2018AUG17_JS

Setup Version00046

Curve Name	pt	Raw Value	User Value	Device	Mult.	Add.
LSDensity	1	0.283416	2.7 g/c3	Aluminum Block	30.516950	-5.949
MSDensity	1	0.225191	2.7 g/c3	Aluminum Block	72.310310	-13.584
SSDensity	1	0.249199	2.7 g/c3	Aluminum Block	120.569900	-27.346
LSDensity	2	0.250975	1.71 g/c3	Concrete Block		
MSDensity	2	0.2115	1.71 g/c3	Concrete Block		
SSDensity	2	0.240988	1.71 g/c3	Concrete Block		



Measure Point : 2.343 ft : LSN
Measure Point : 9.383 ft : GR

LSN 10.07 ft
SSN 9.58 ft

Knuckle Joint


Identifier : 0813
Asset Number : None
Length : 2.297 ft
Diameter : 1.7 inch
Weight : 16.1 lbs

Density

Identifier : 1481
Asset Number : 006
Length : 5.427 ft
Diameter : 2.0 inch
Weight : 38.4 lbs
Measure Point : 1.647 ft : Short
Measure Point : 1.870 ft : Mid
Measure Point : 2.139 ft : Long

Long 2.14 ft
Mid 1.87 ft
Short 1.65 ft
0.00 ft

Total Length : 25.74 ft
Total Weight : 150.13 lbs
Max Diameter : 2.0 inch

	<div>COMPANY: CONFLUENCE DJ LLC</div> <div>WELL: DESHA 4-15-1</div> <div>FIELD: WATTENBURG</div> <div>COUNTY: WELD</div> <div>STATE: CO</div>
--	---