

# Pulsed Neutron Emulated OH Log

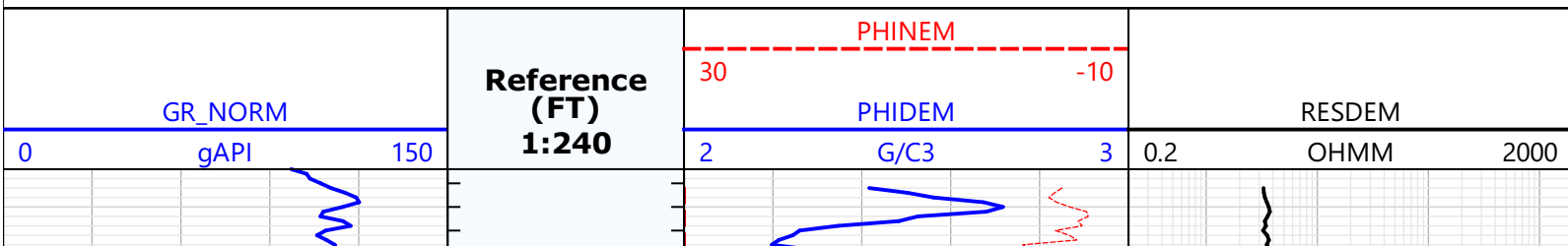


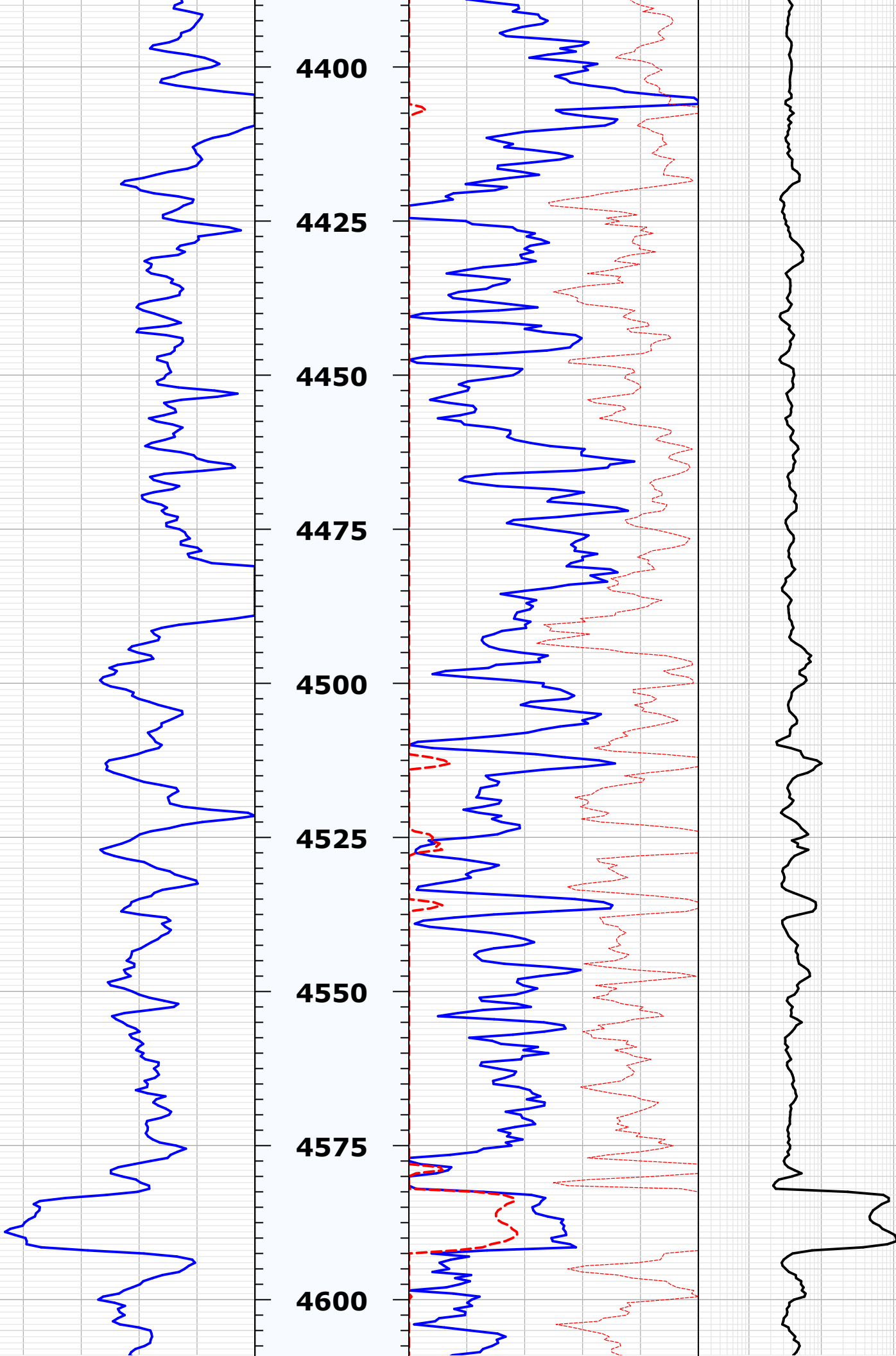
Company:	Laramie Energy LLC
Well:	CC 0697-04-10E
Field:	Grand Valley
County:	Garfield
State:	Colorado
API:	05-045-23988
Location:	Sec: 4 Twp:6S Rng:97W
Date:	July 17, 2019
Recorded by:	J. Donnelly
KB:	8639 ft
DF:	8638 ft
GL:	8609 ft

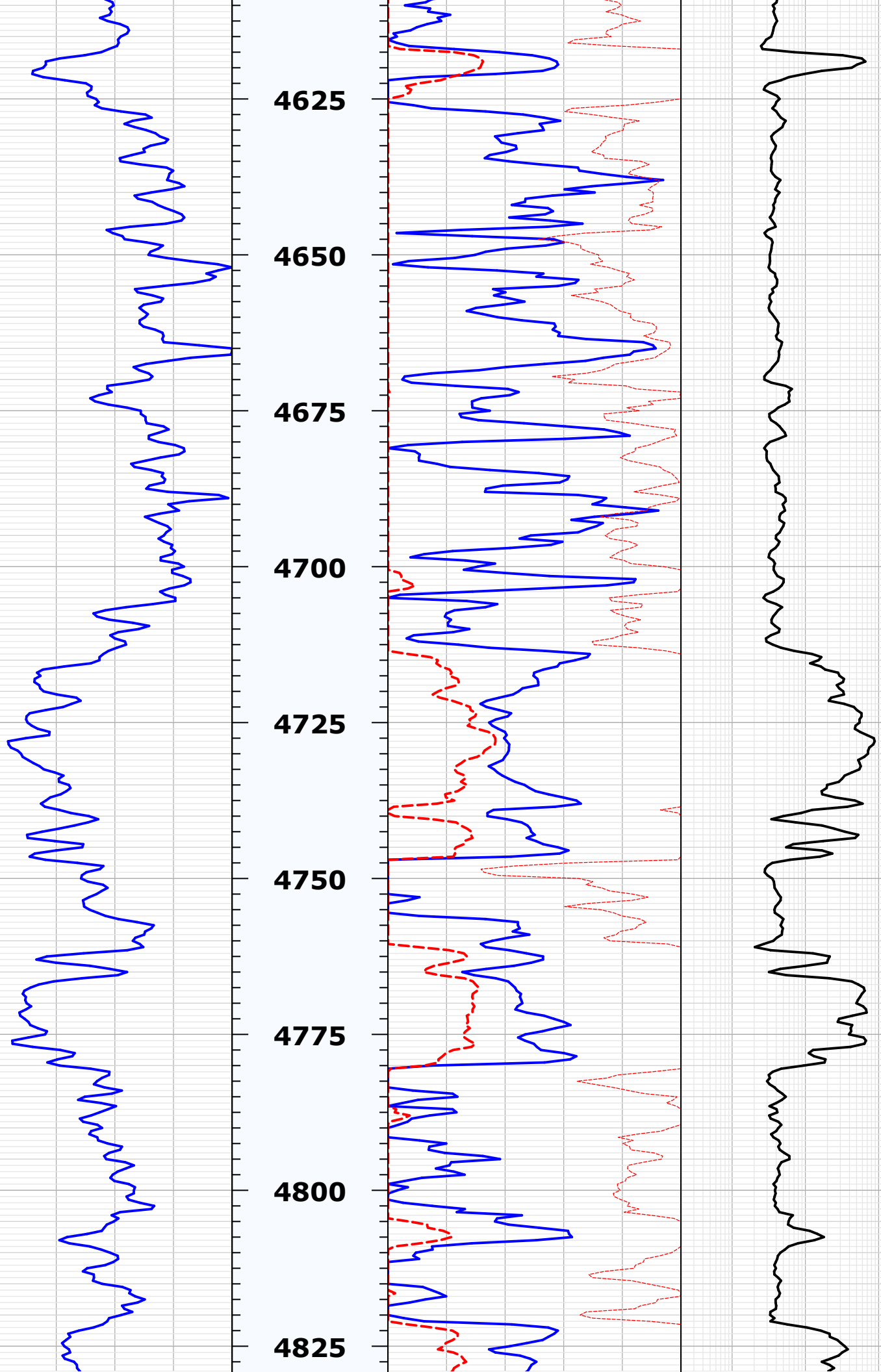
Any interpretation of logs or survey, either through optical or electronic processing means or otherwise, or any recommendation or description of any reservoir based on such interpretations of other data, are opinions based upon measurements, assumptions and empirical relationships, which inferences and assumptions are not incapable of error. We cannot and do not guarantee the accuracy, correctness or completeness of such interpretations, recommendations or descriptions and Company agrees that we shall not be liable or responsible for any loss, cost, damage or expense incurred or sustained by Company resulting directly or indirectly therefrom. Under no circumstances should any such interpretation, recommendation or description be relied upon as the basis for any procedure conducted in or on a well which involves any risk to the safety of personnel, equipment or venture. Company shall always have full responsibility for such decisions and for all decisions concerning other procedures relating to drilling, completion or production operations.

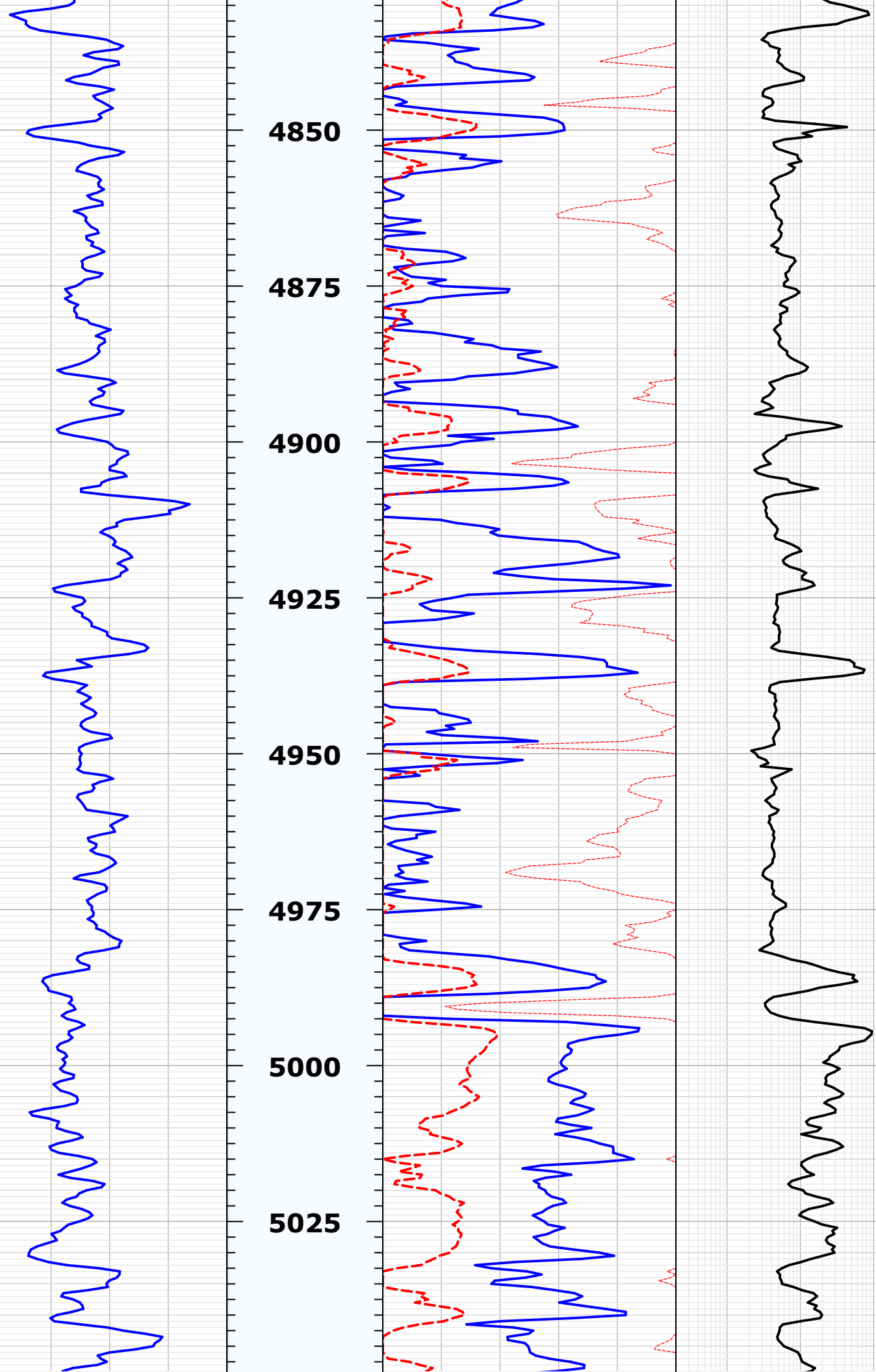
Casing Record	Size (in)	Weight (lb/	Grade	Joint Type	From (ft)	To (ft)
Surface	9.625	36	---	-	Surface	2597
Production	4.50	11.6	---	-	Surface	10078

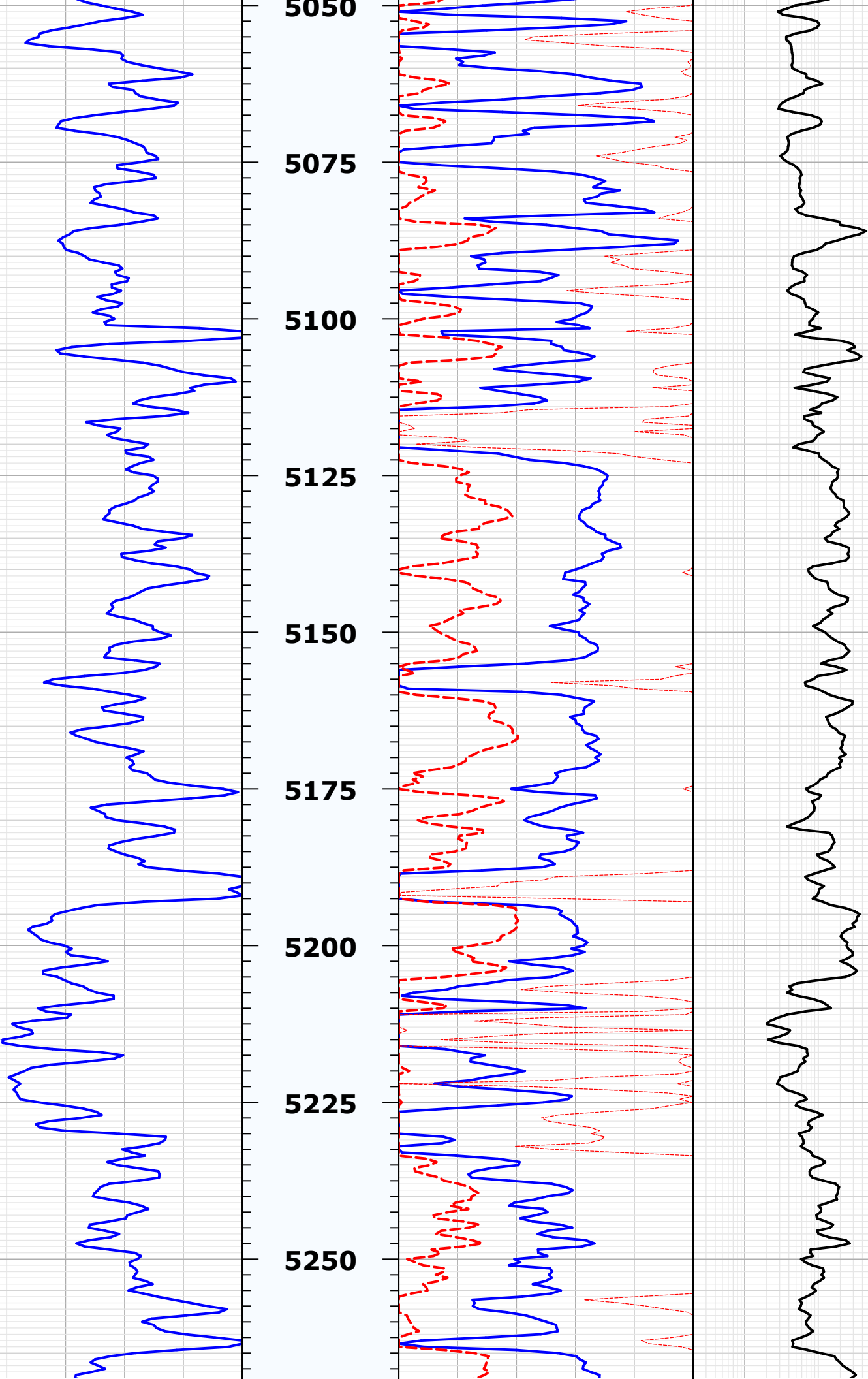
This well is an Offset Well  
 Depth referenced to Reliance RBL dated 12-JUL-2019  
 Reliance Hunter RAS PN data was collected on this well  
 Training Well: CC 0697-04-08E  
 TW models were built using Schlumberger OH provided by the client and Reliance Hunter PN data  
 Density Porosity Matrix = 2.68 g/cc  
 Emulation results may be affected by areas of poor bond  
 Emulation results may be affected by washouts and quality of OH data  
  
 Thank you for choosing Reliance Oilfield Services, LLC!

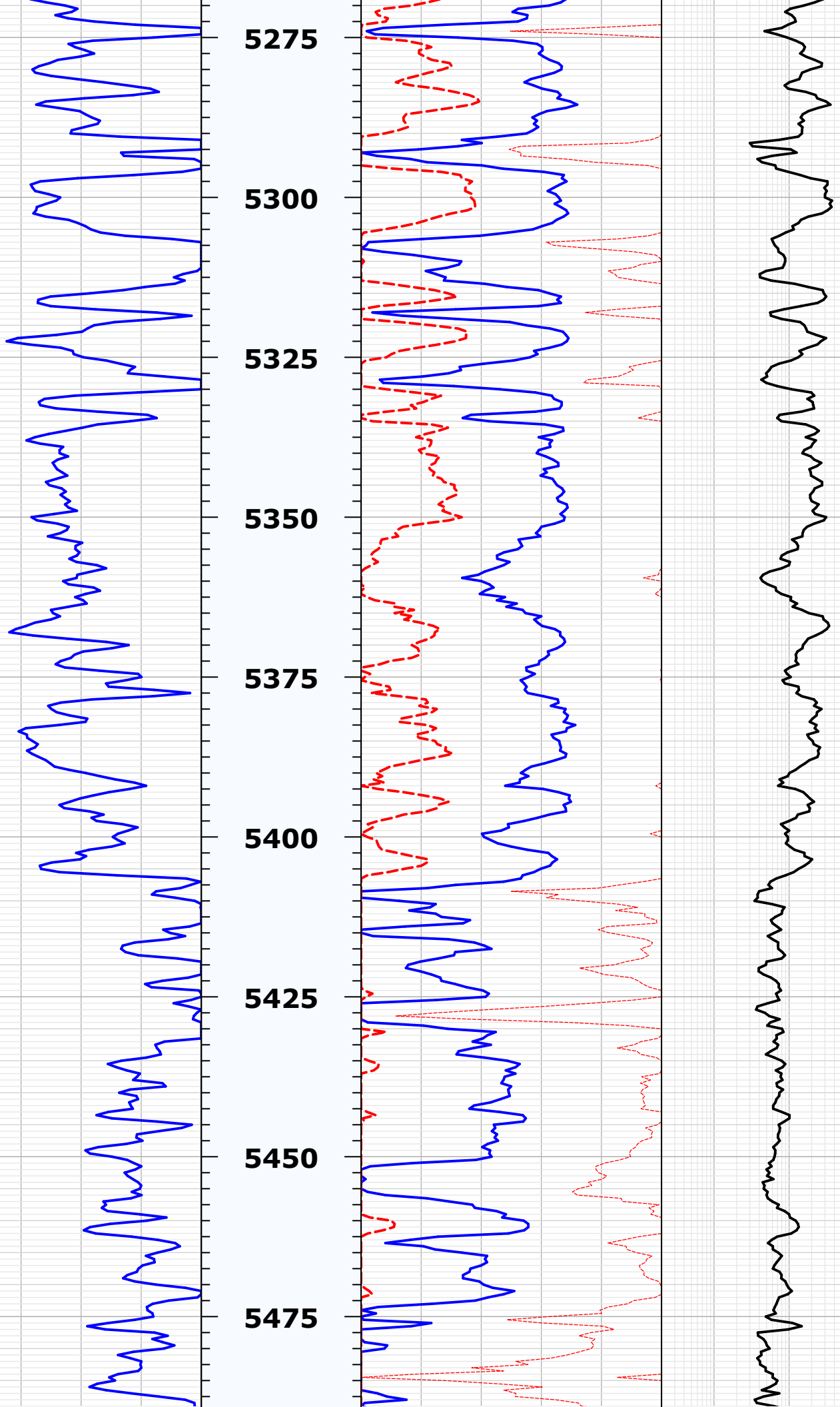


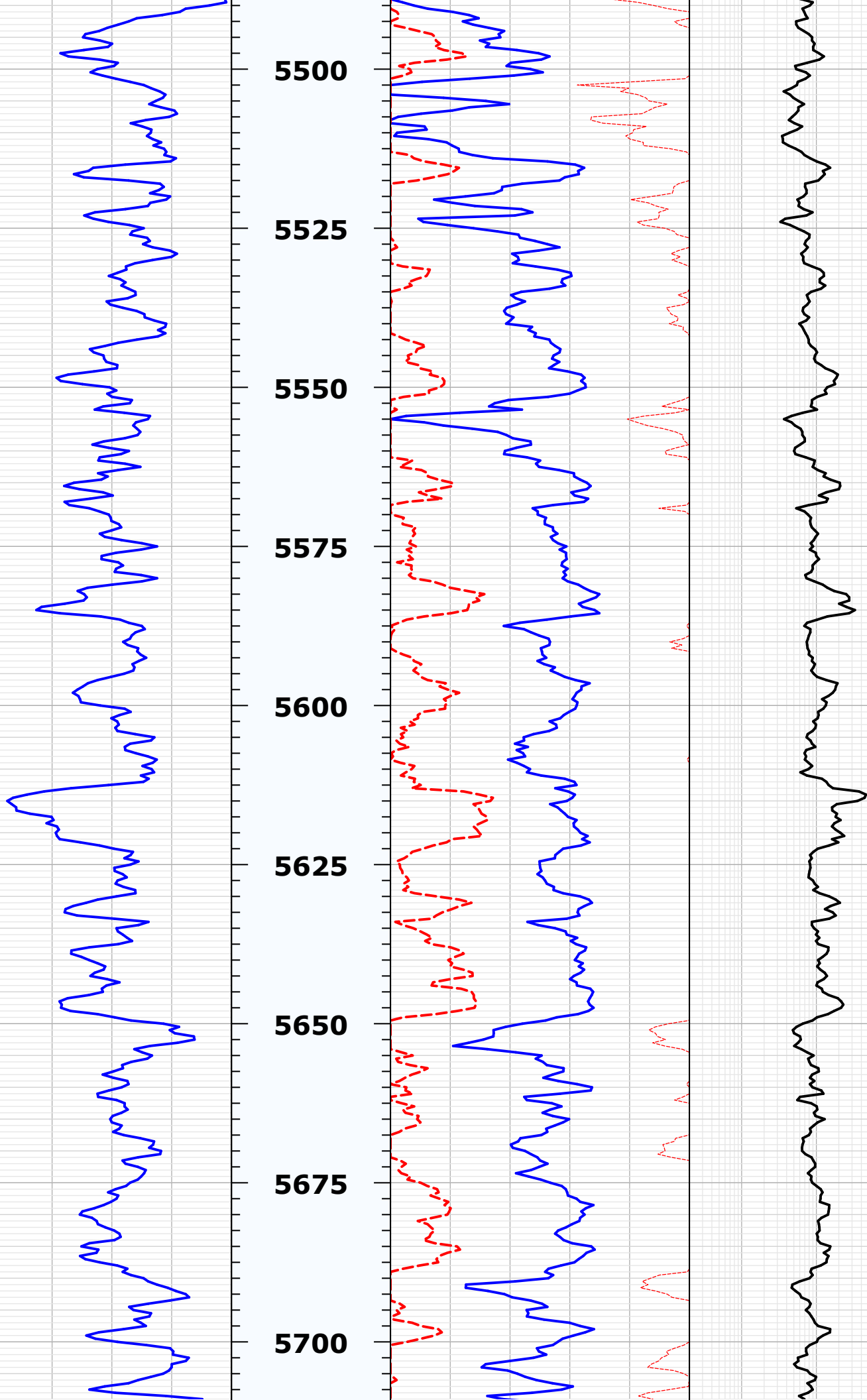


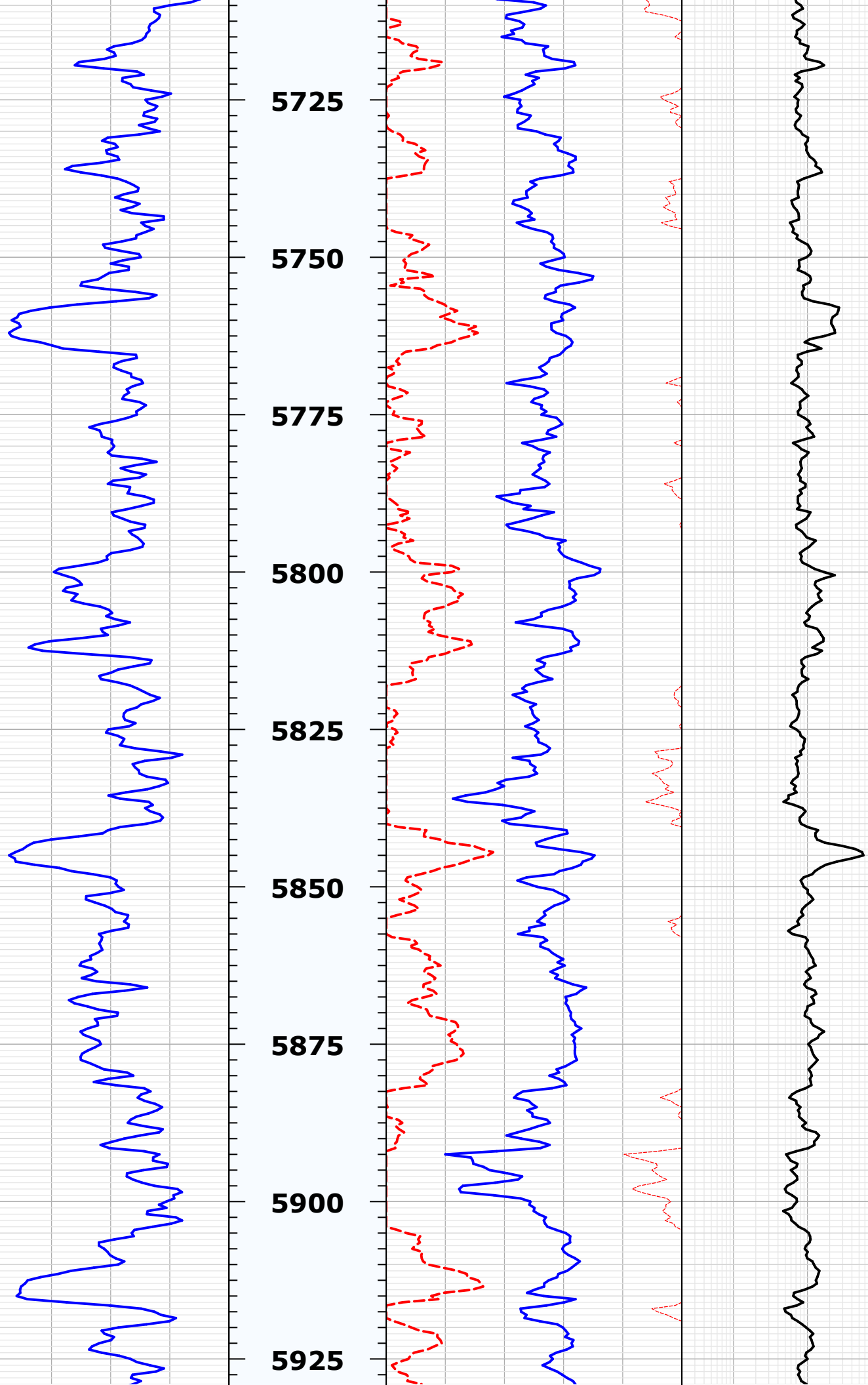


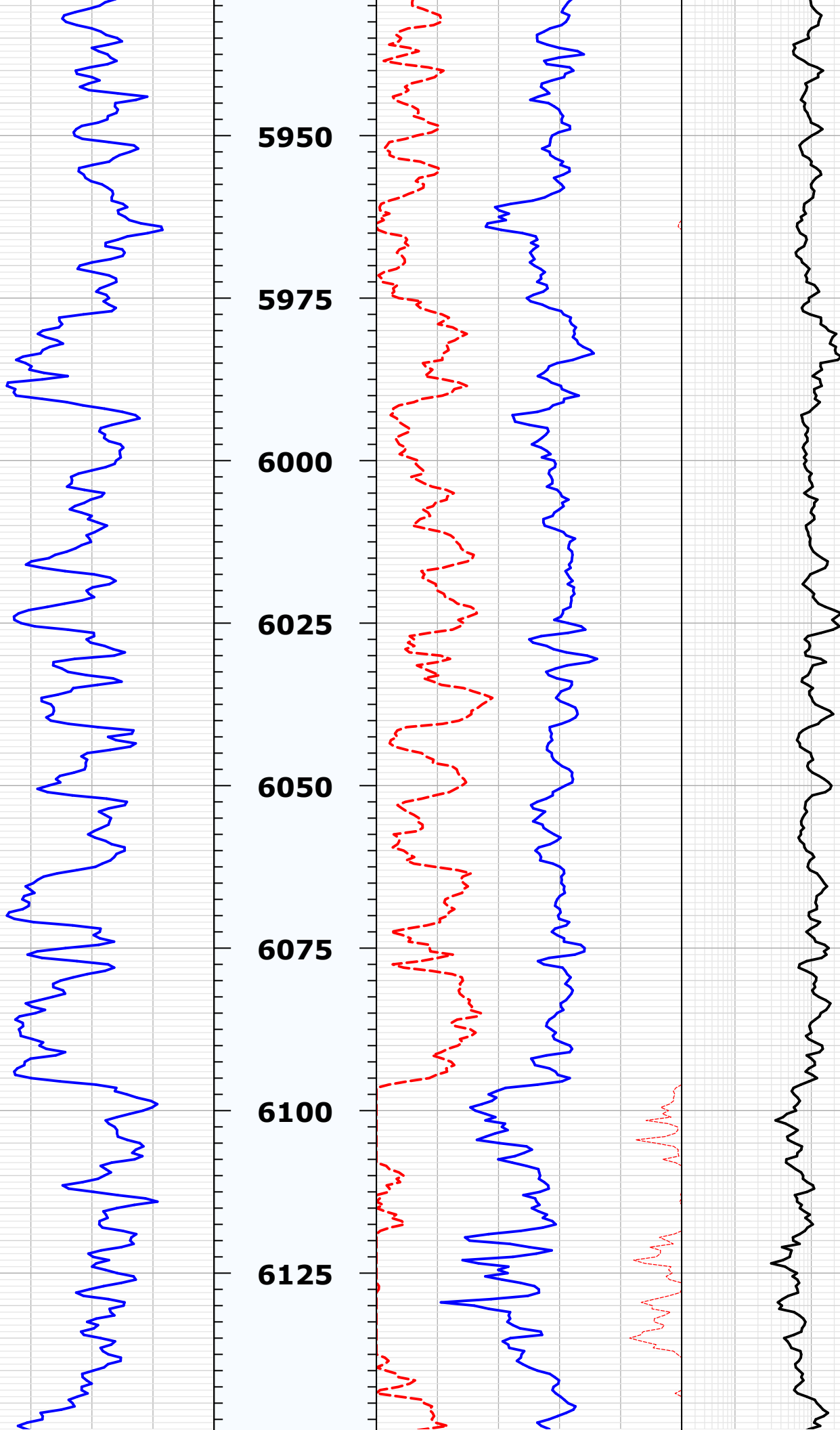


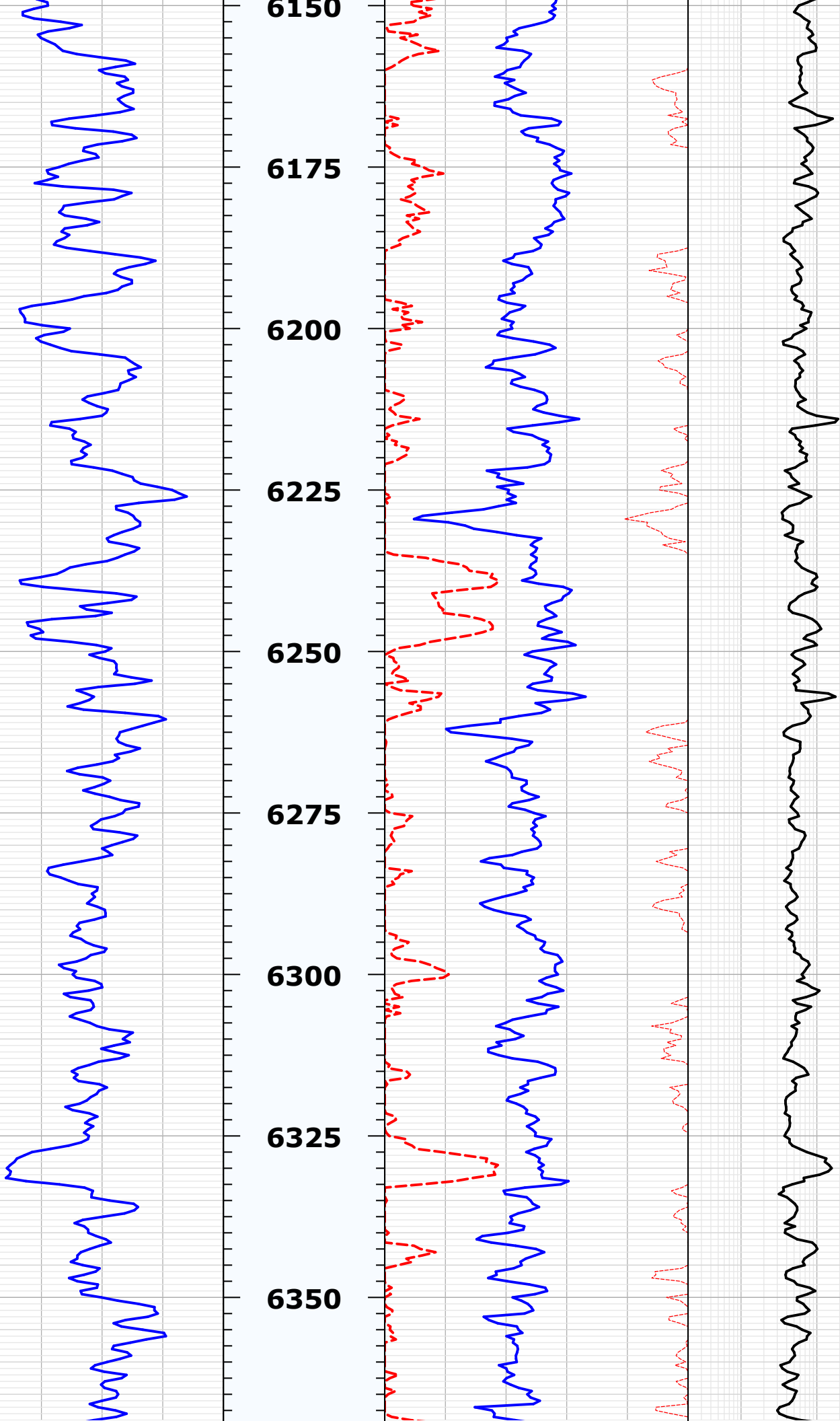


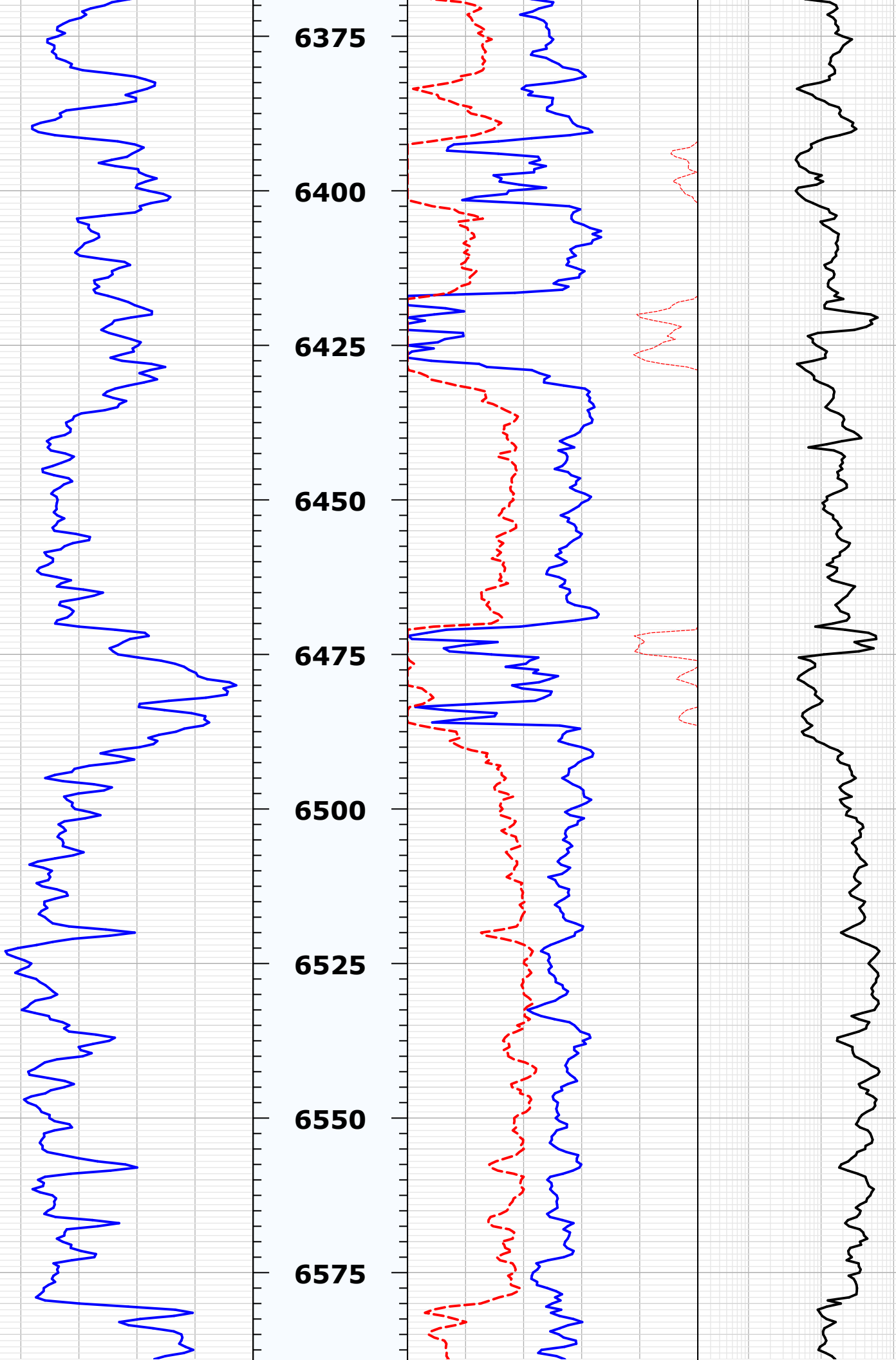


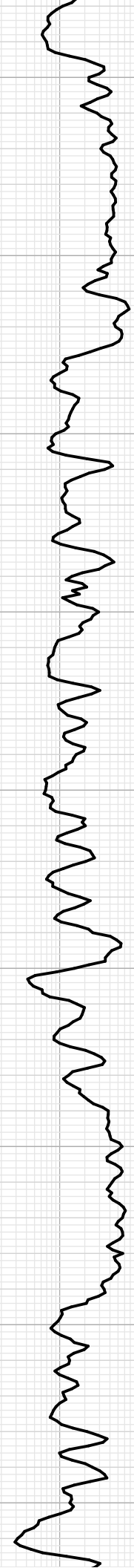
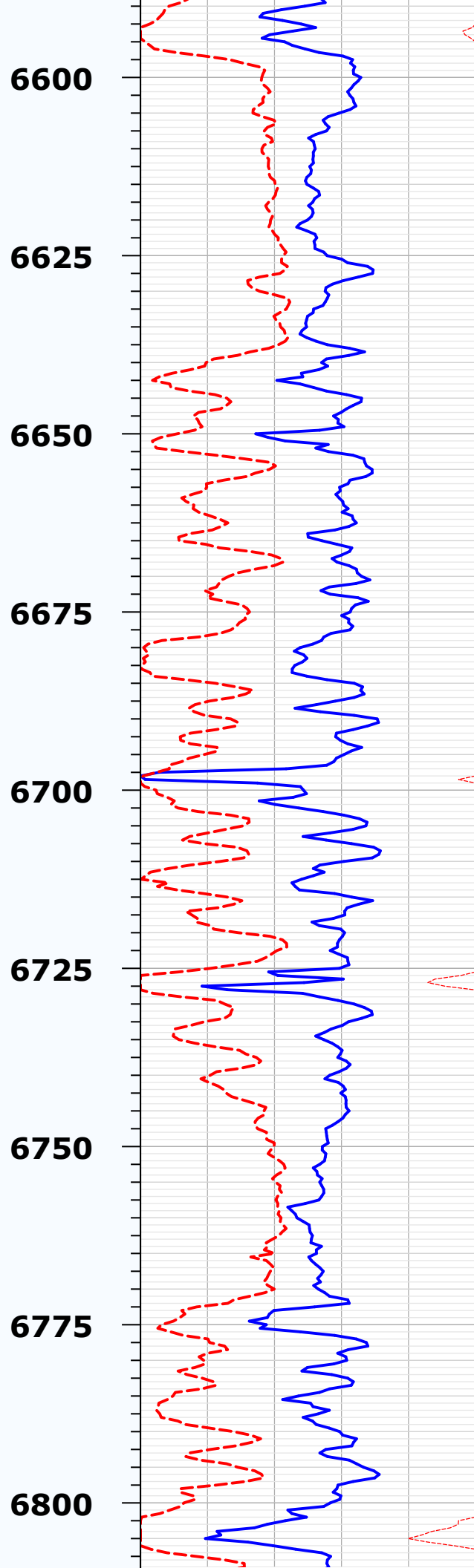
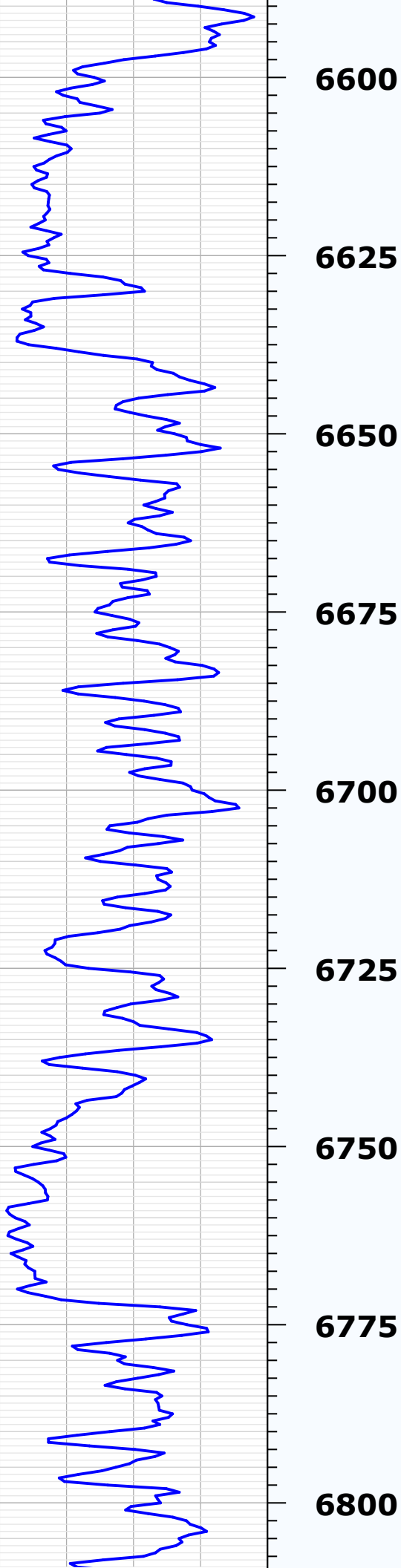


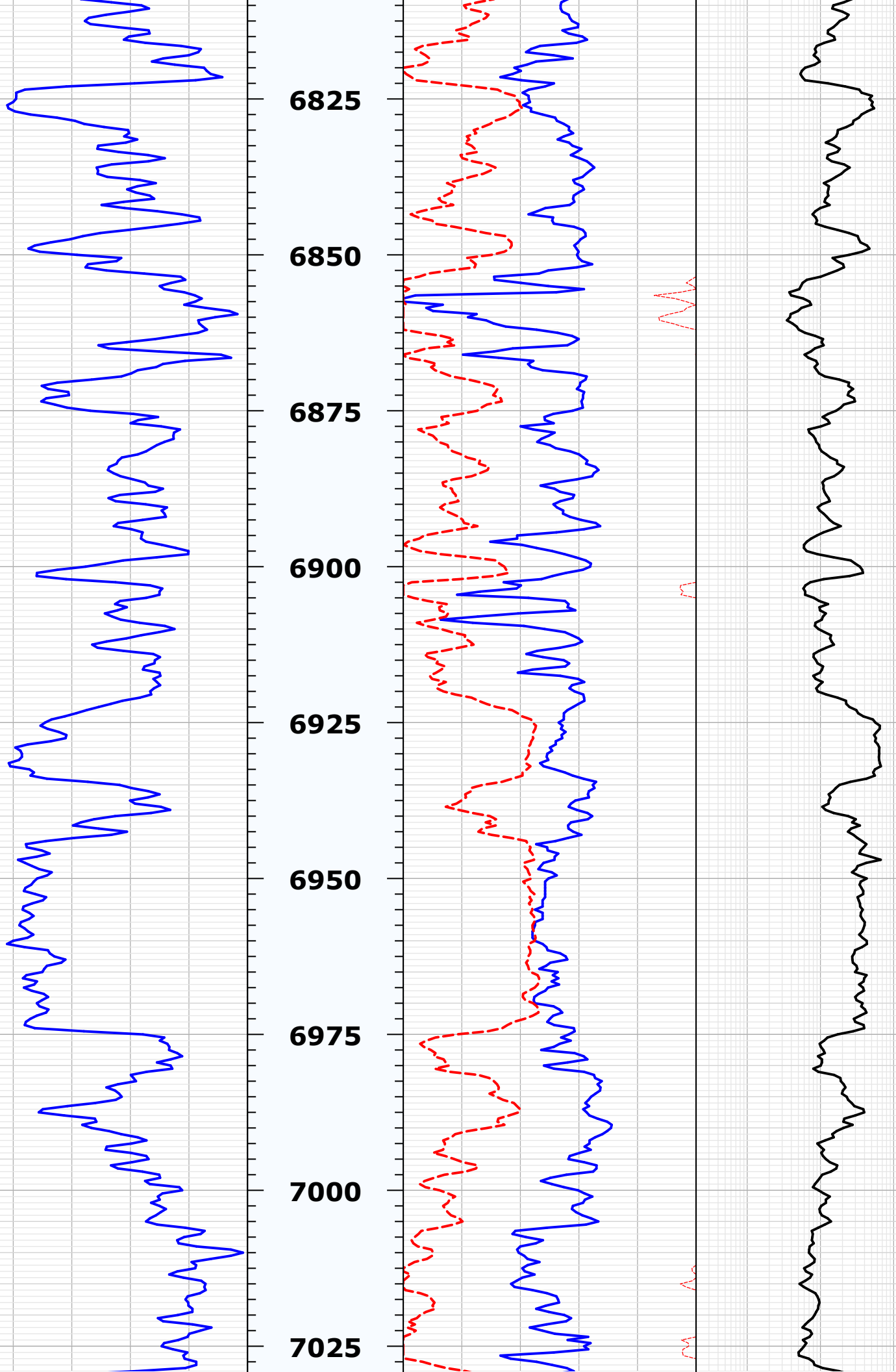


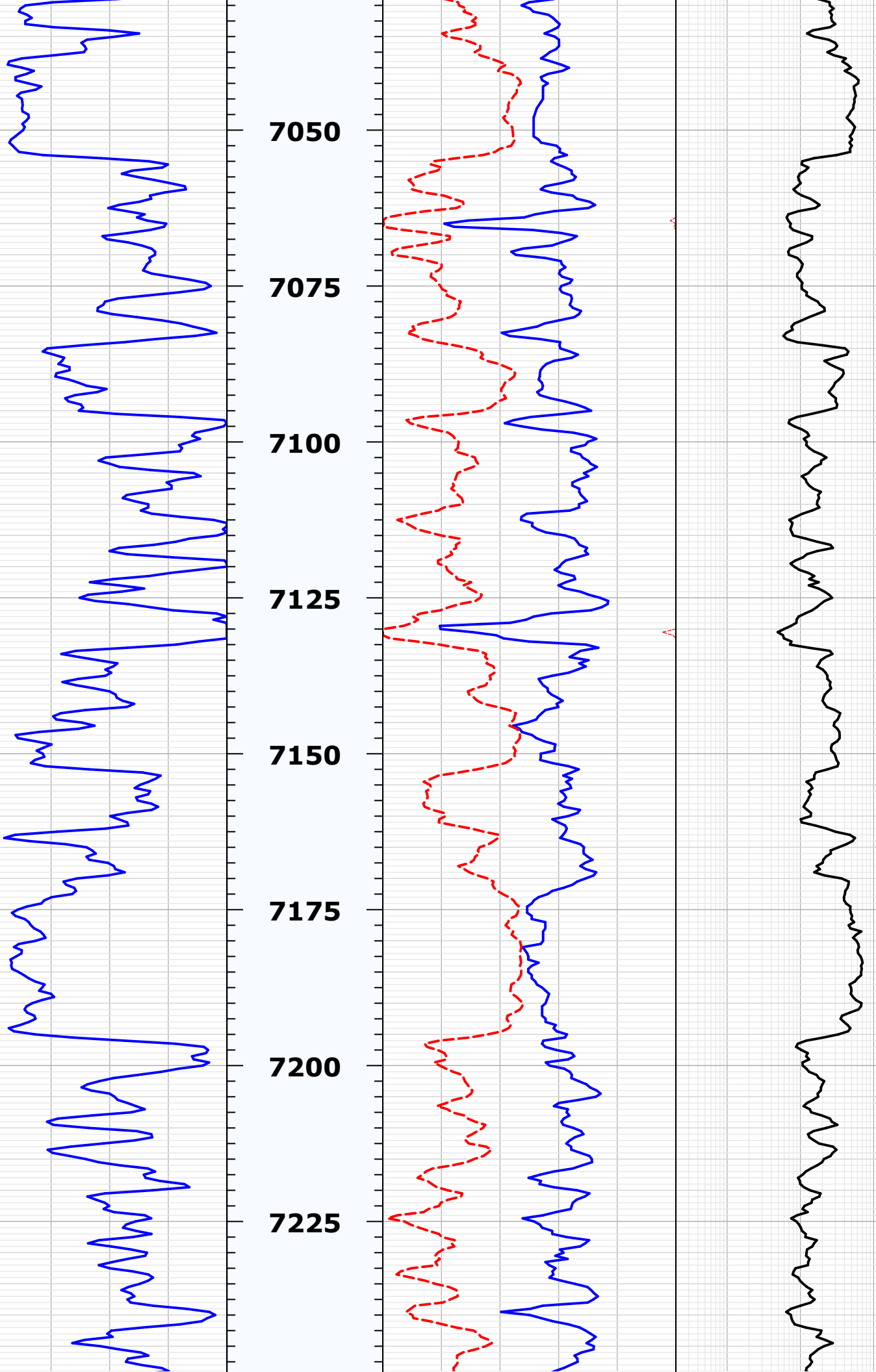


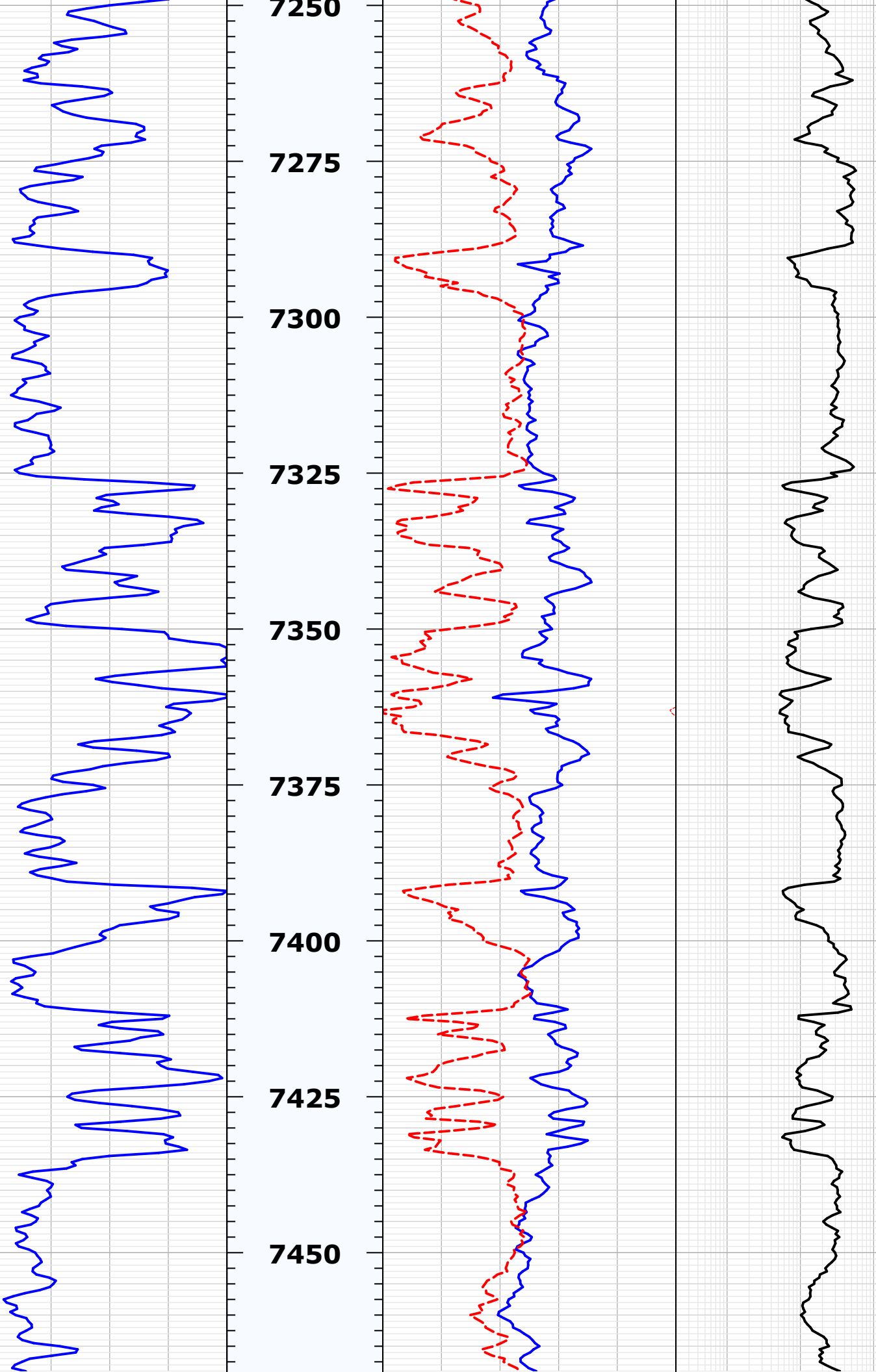


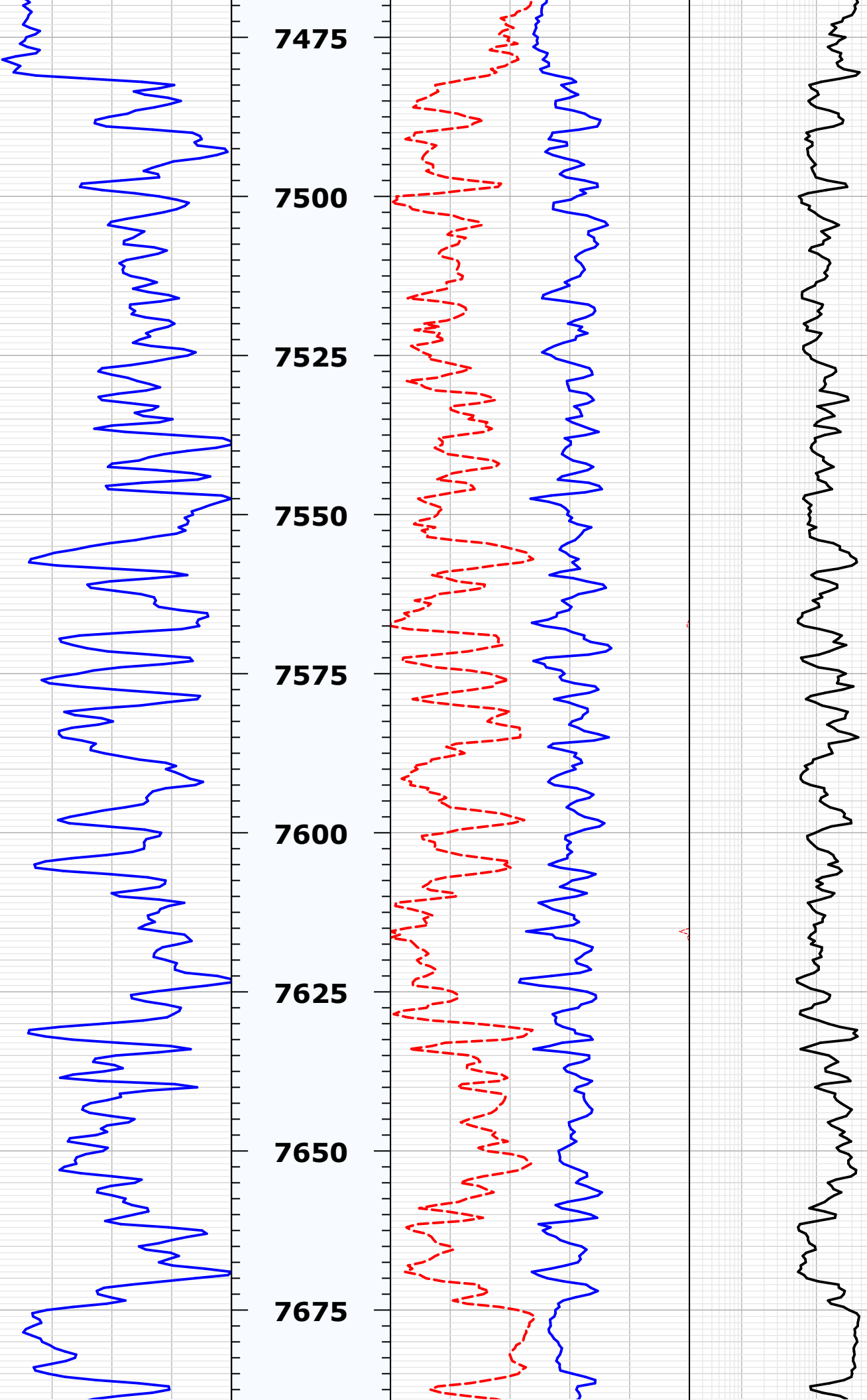


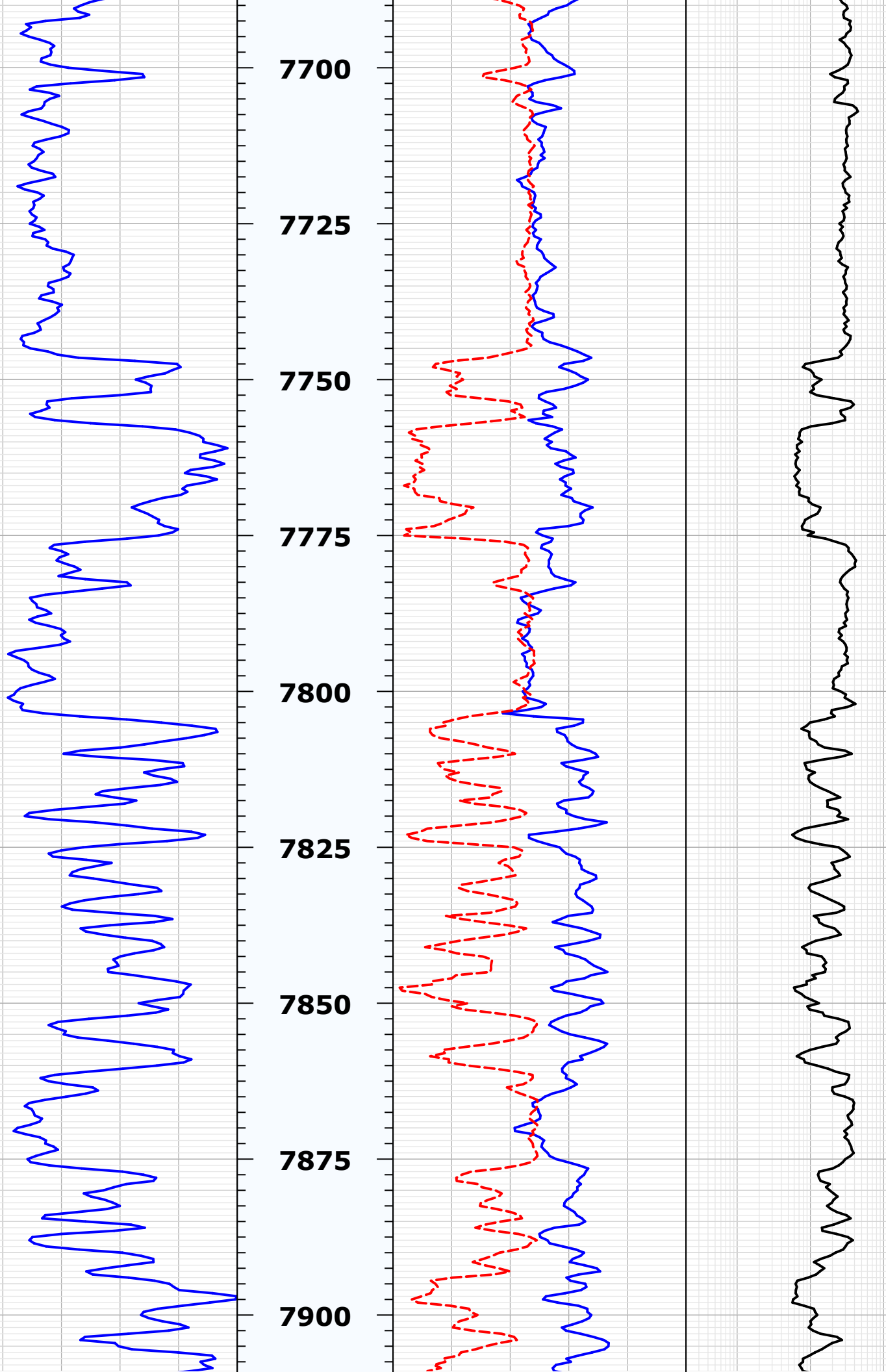


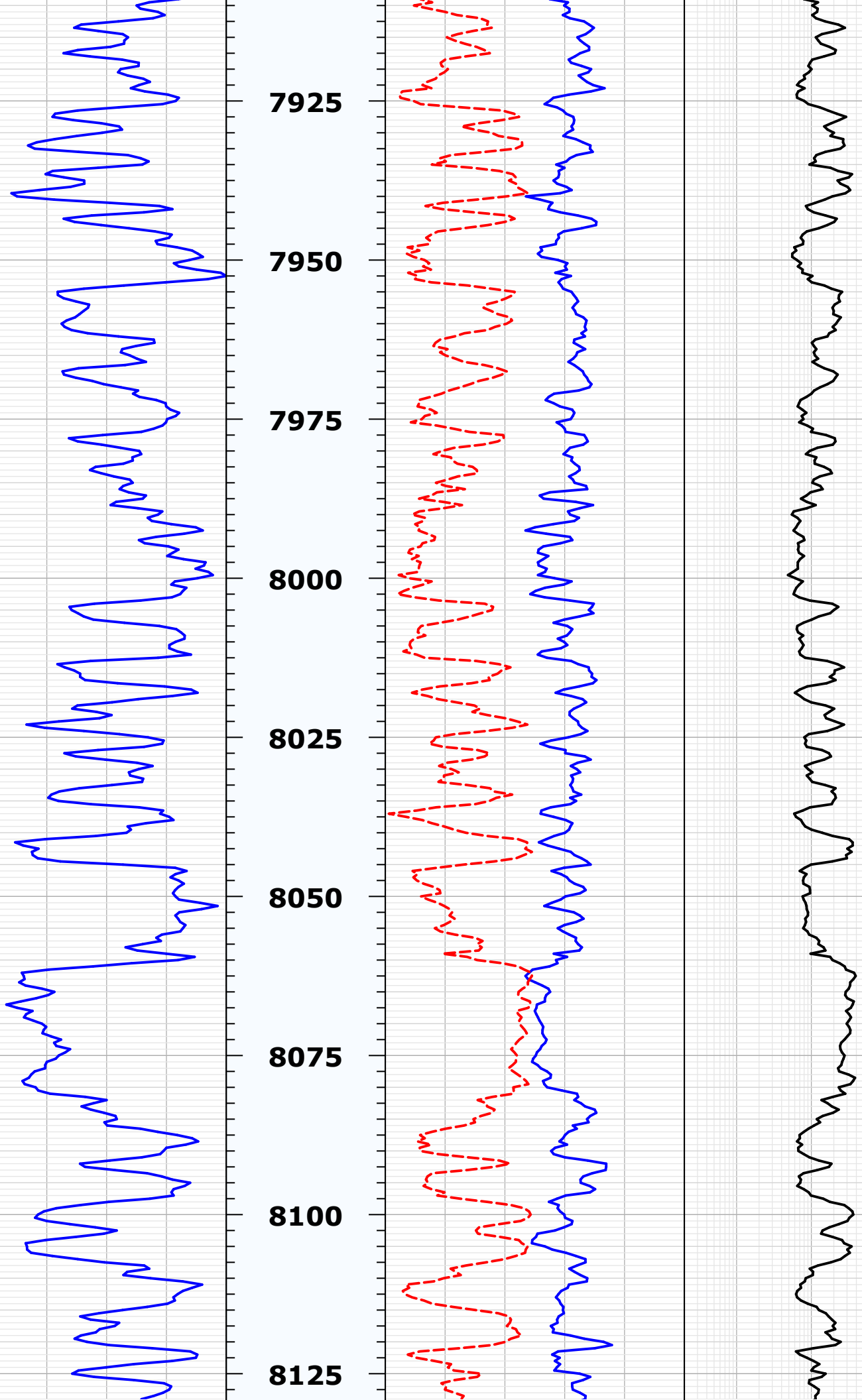


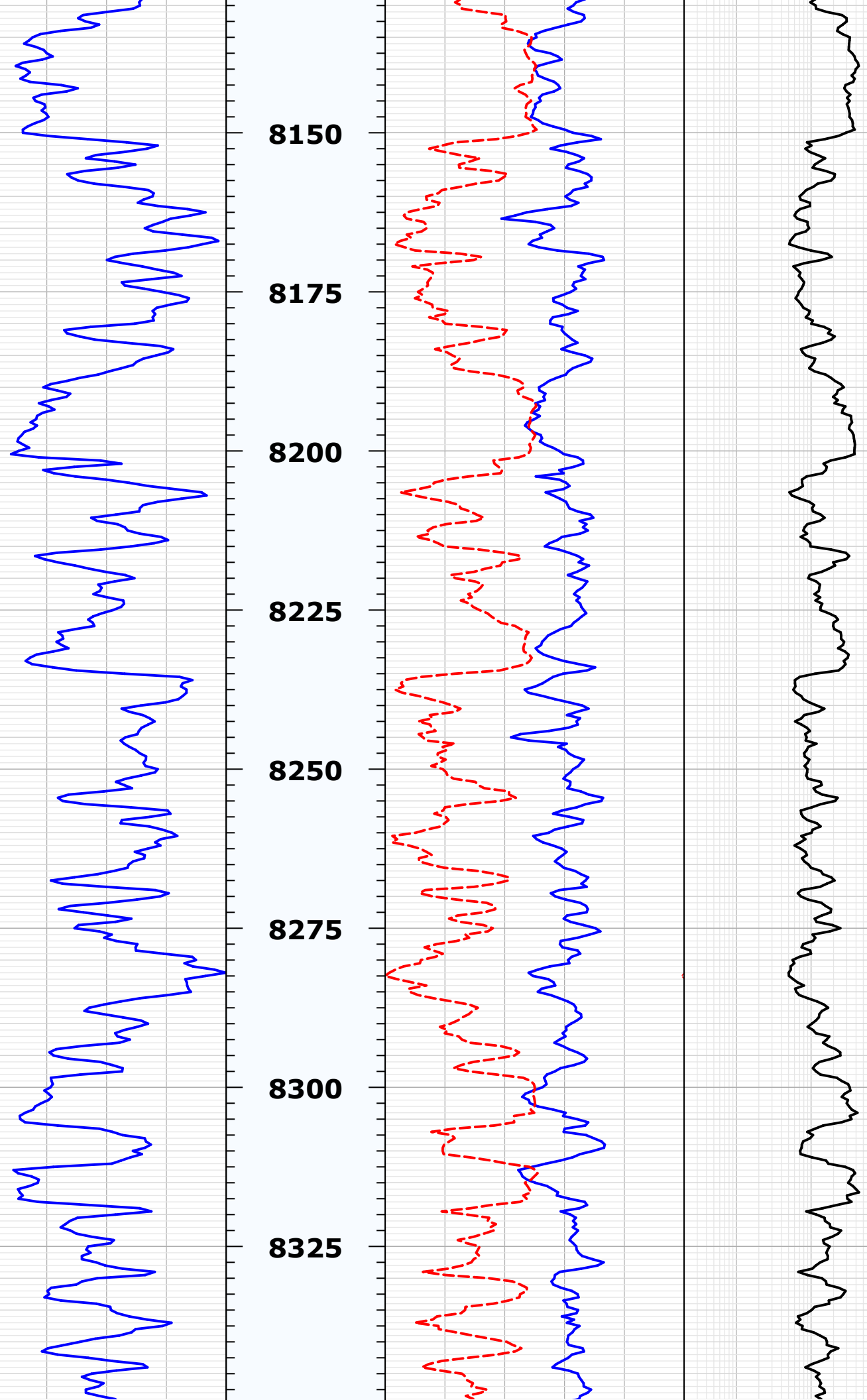


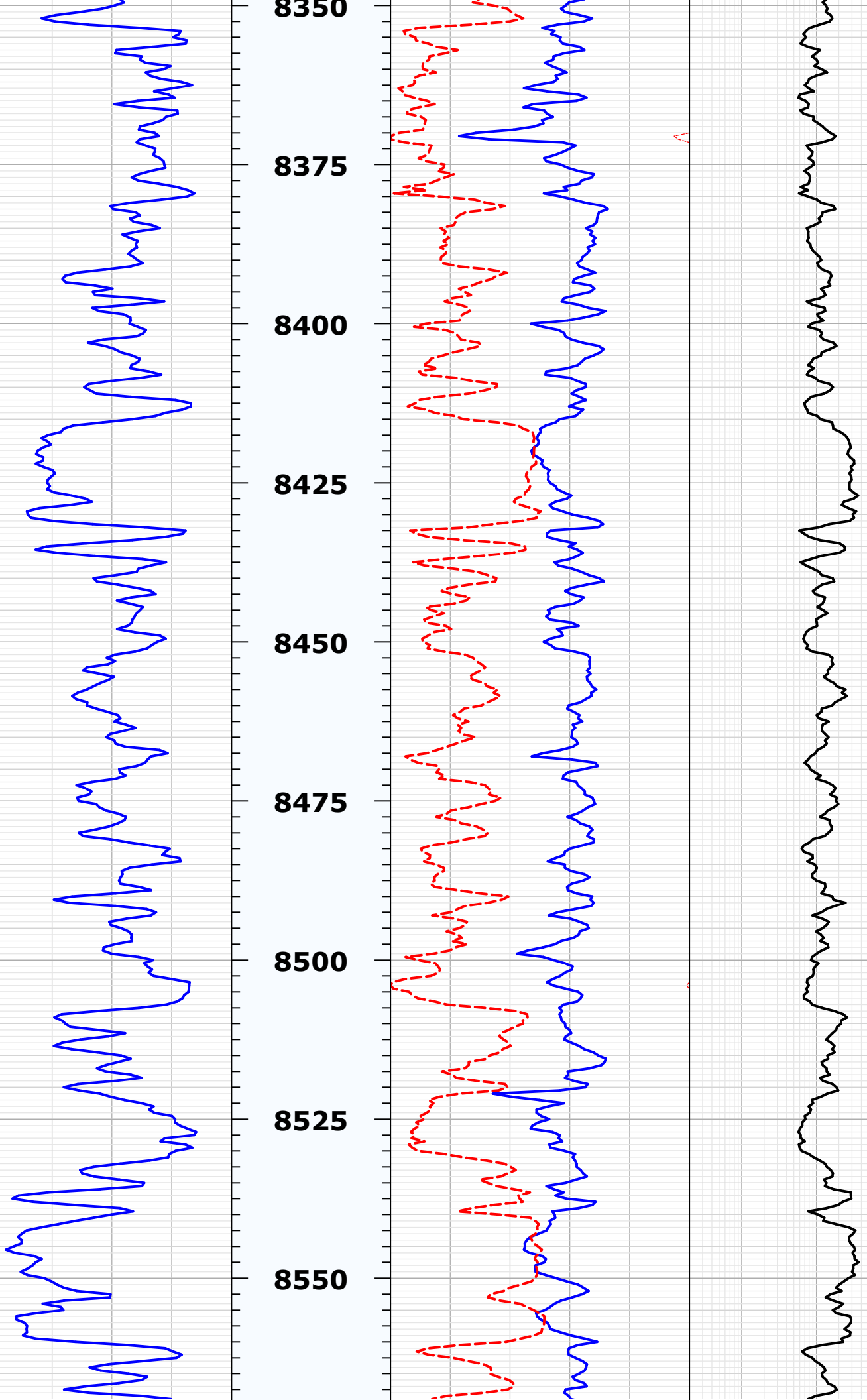


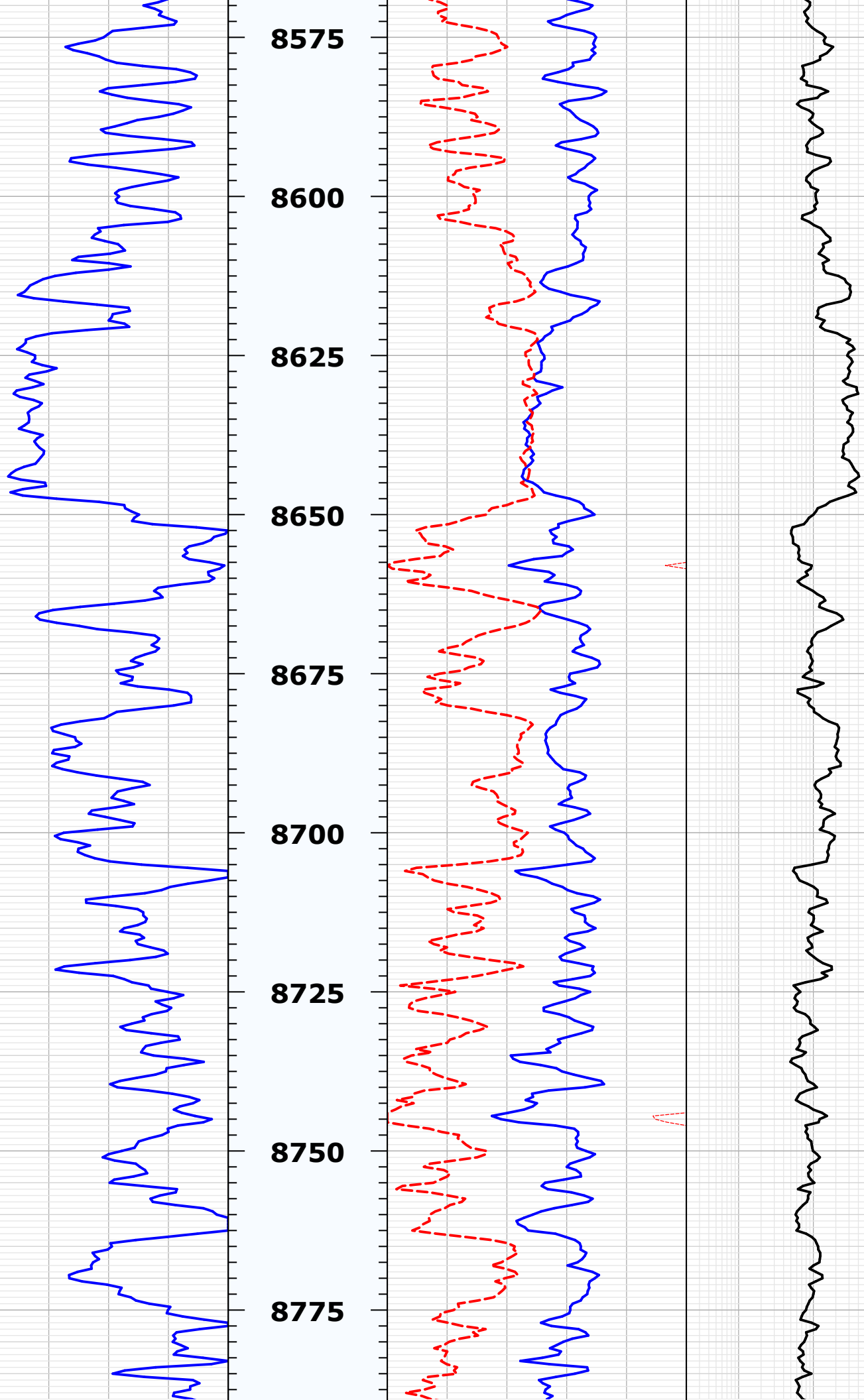


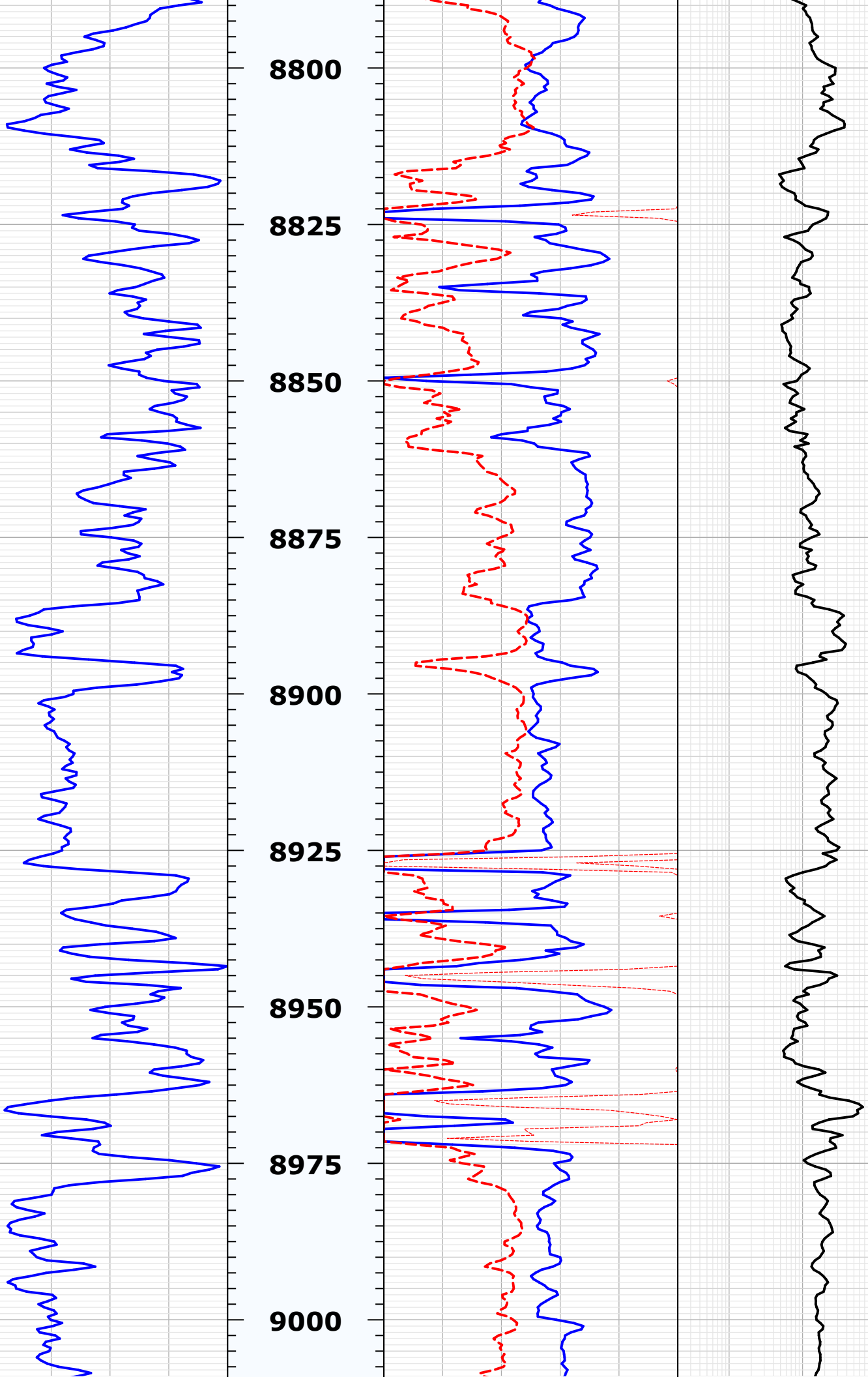


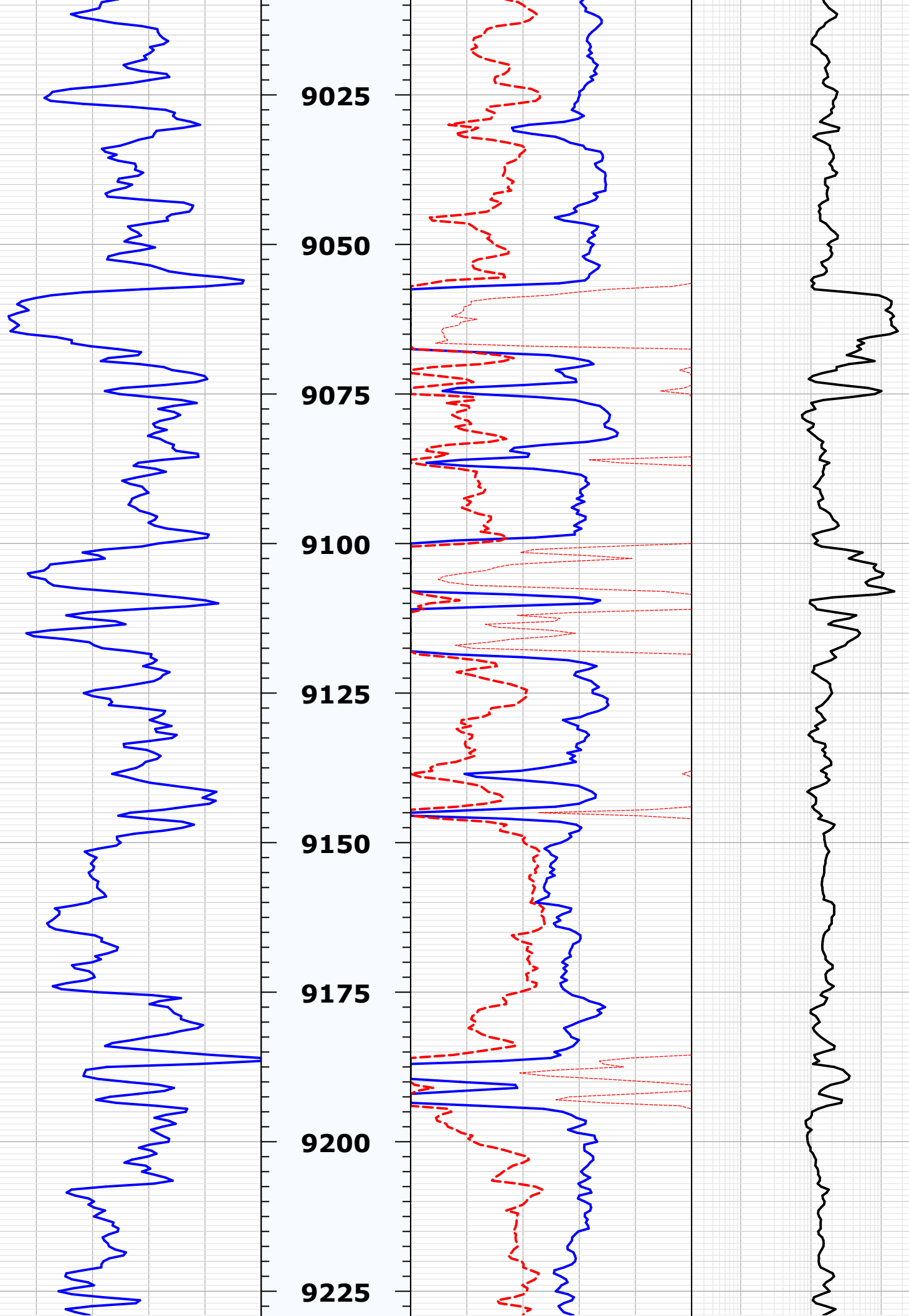


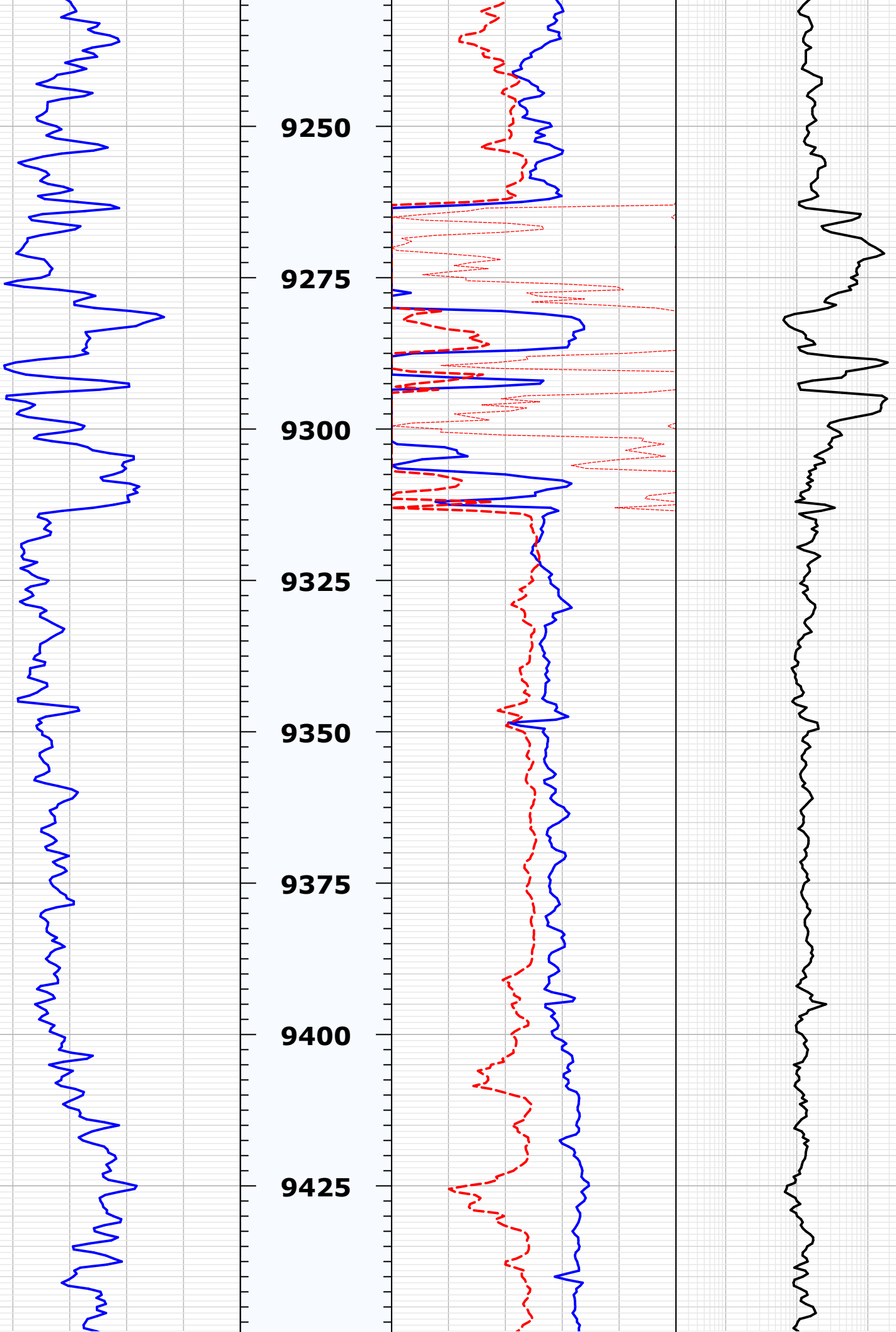


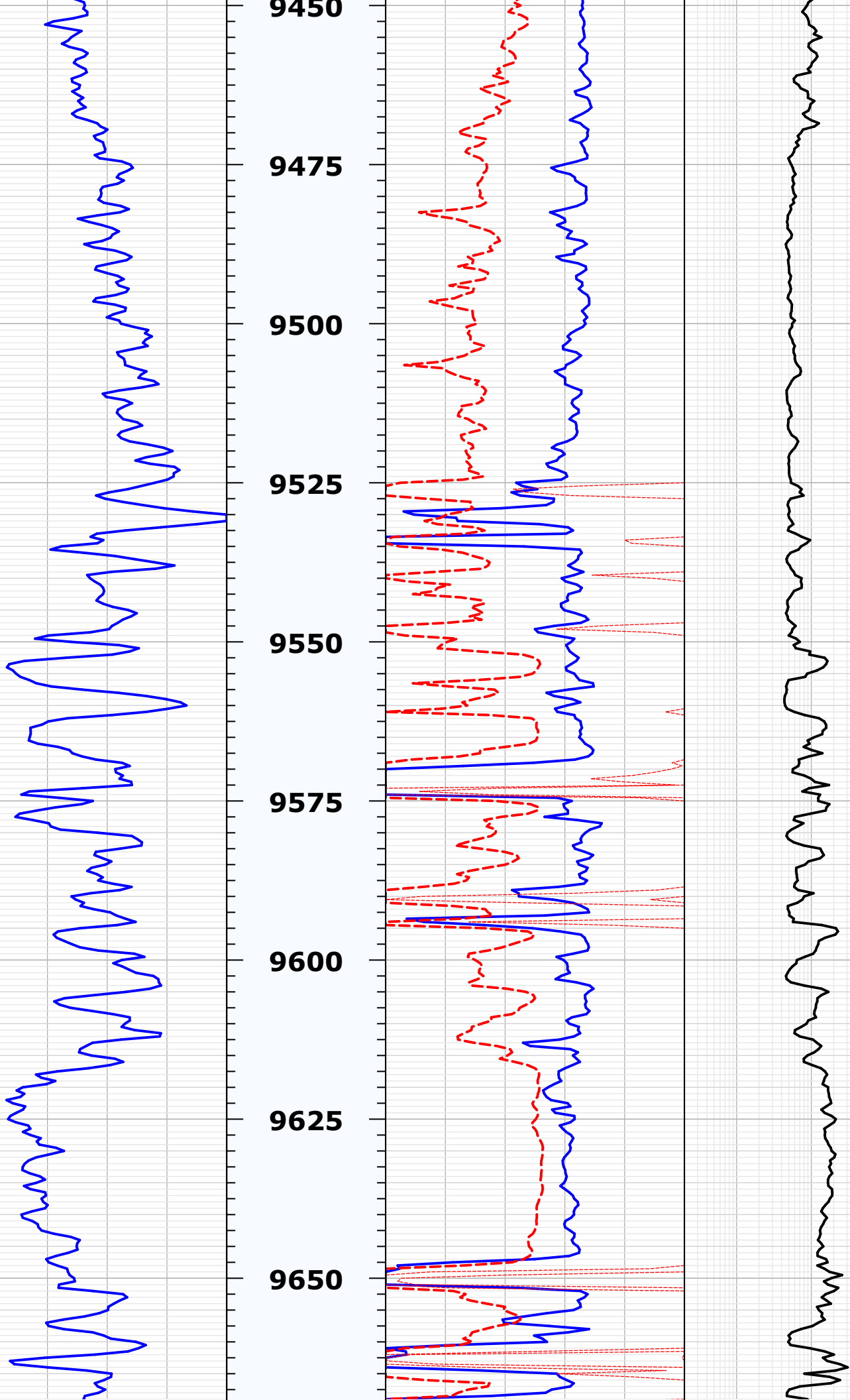


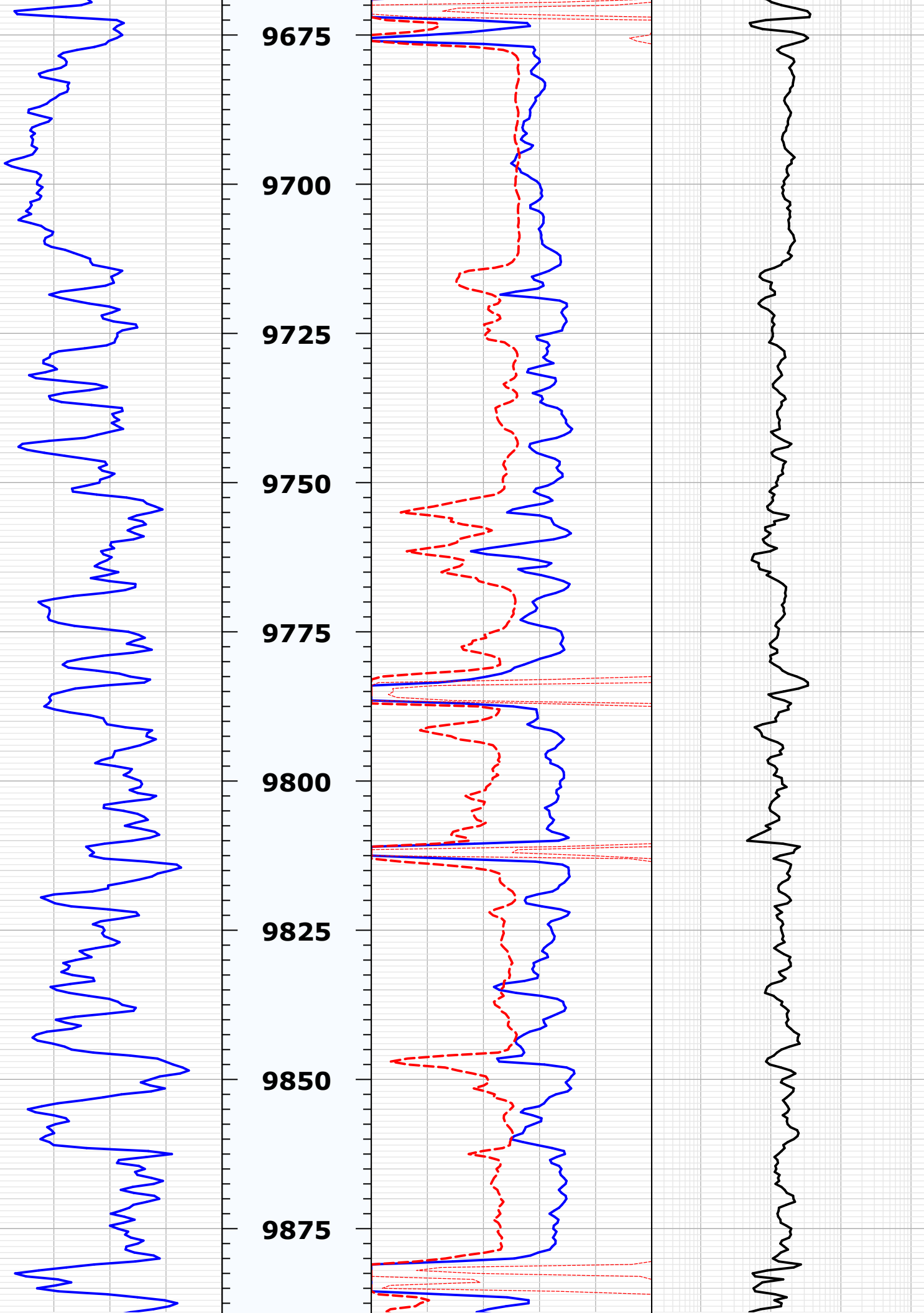


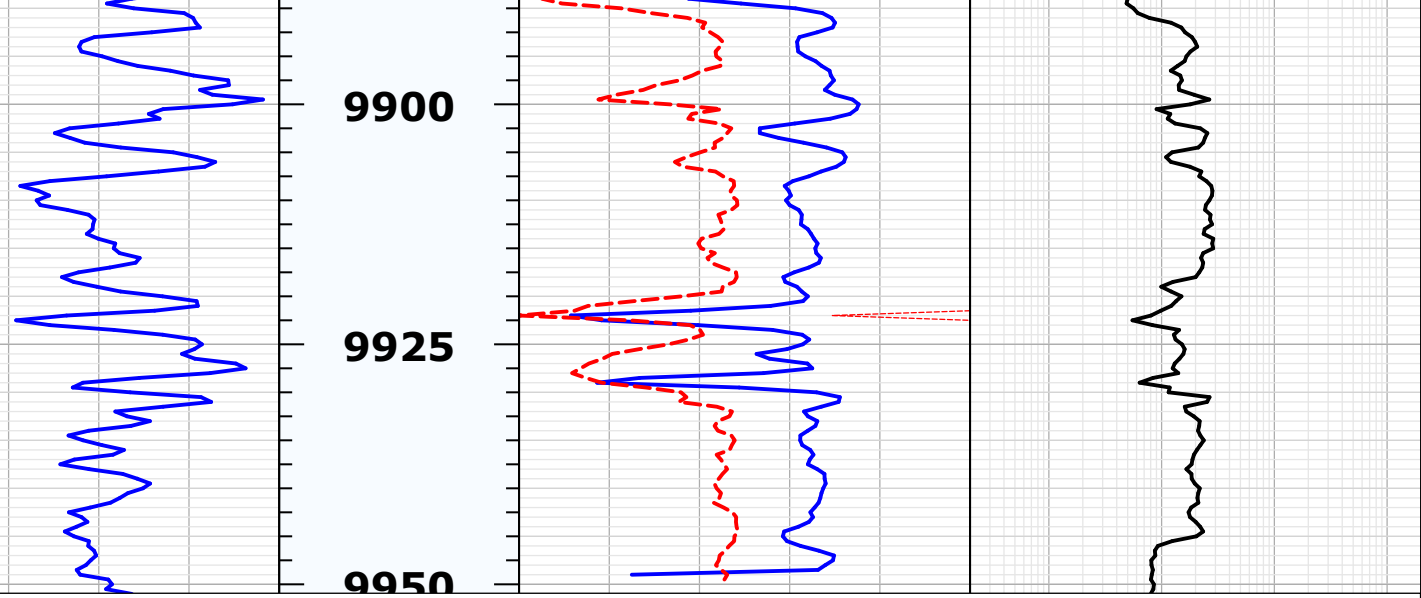












Company: Laramie Energy LLC  
Well: CC 0697-04-10E  
Field: Grand Valley  
County: Garfield  
State: Colorado

