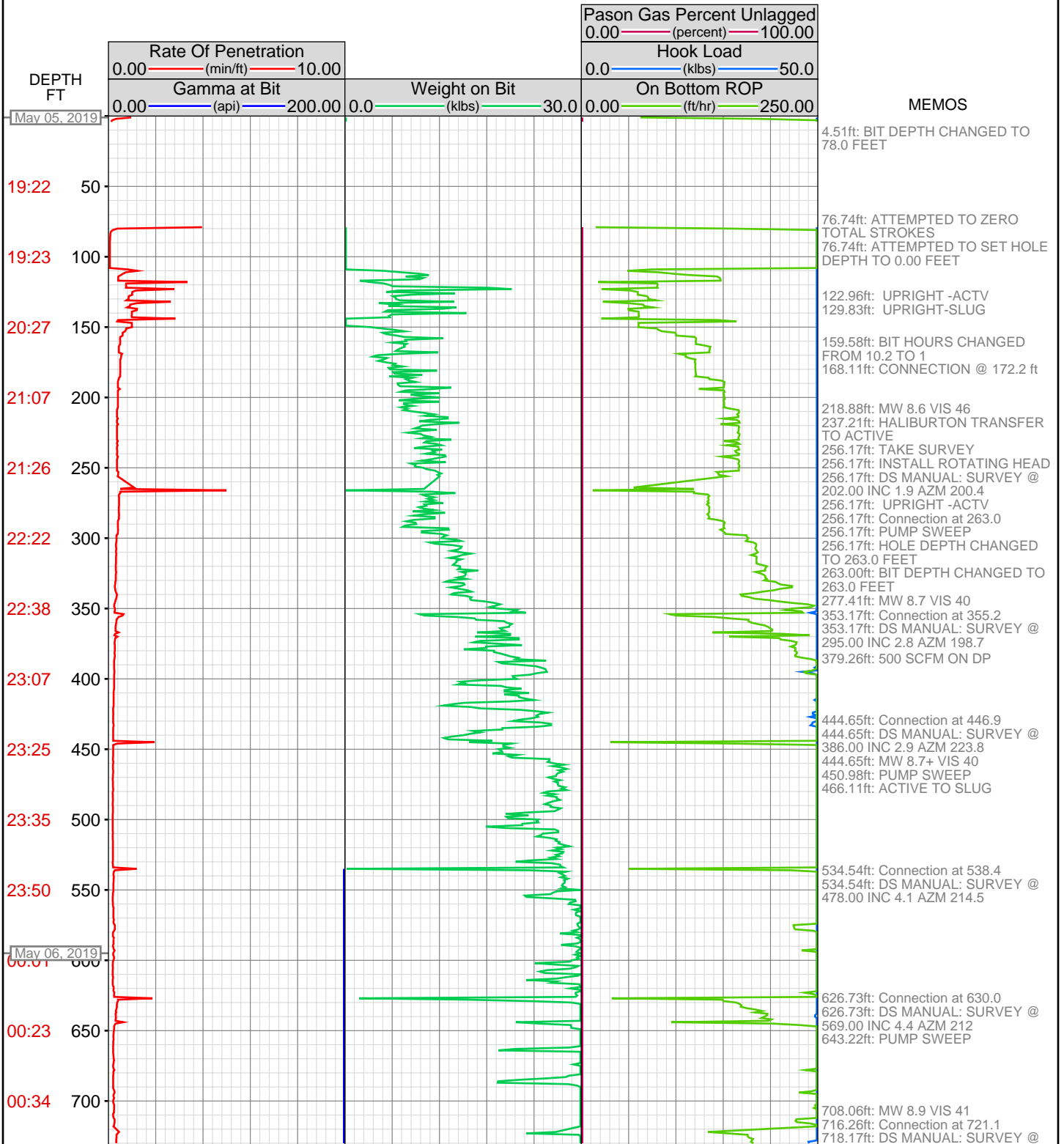


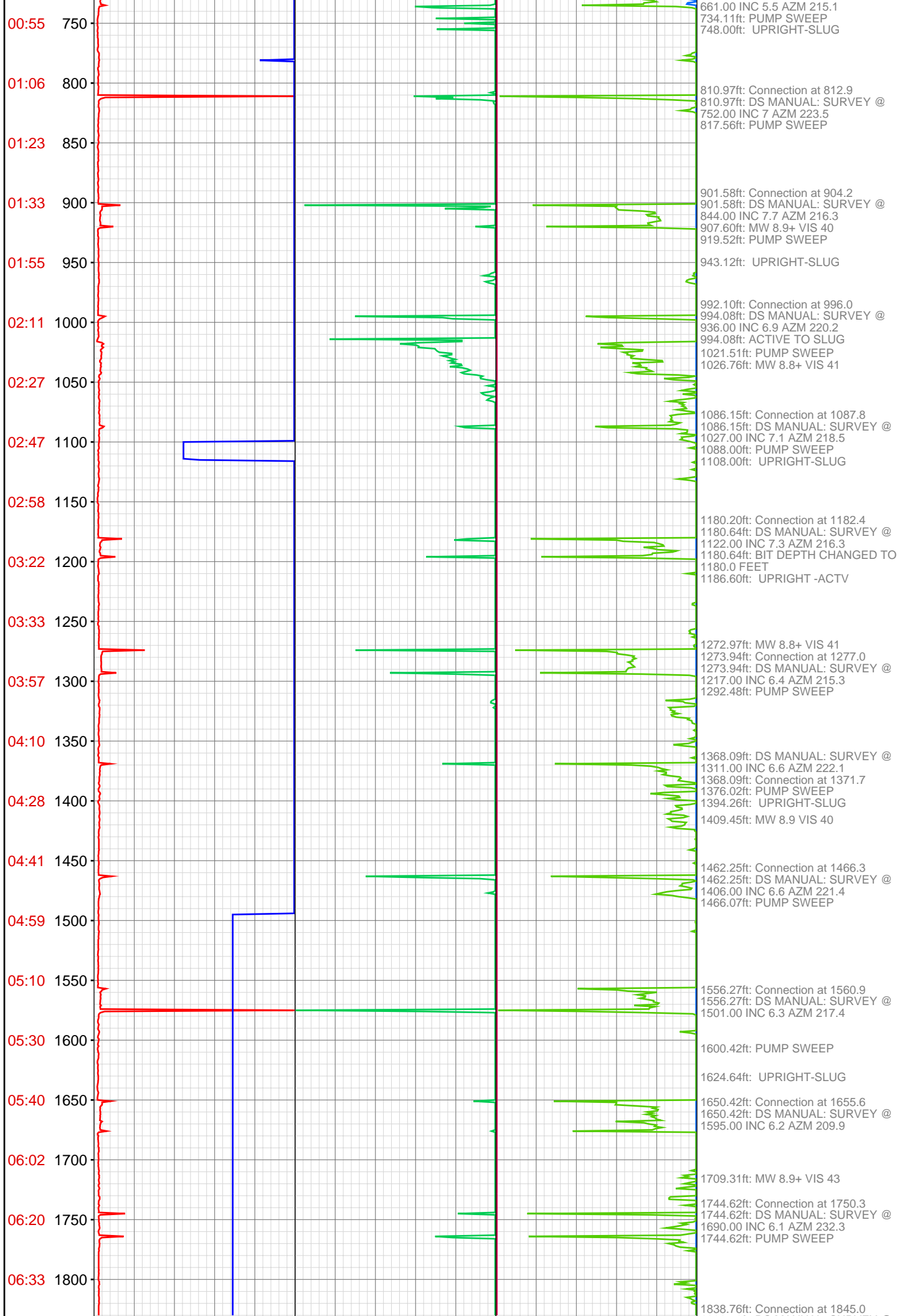
DataHub EDR Log

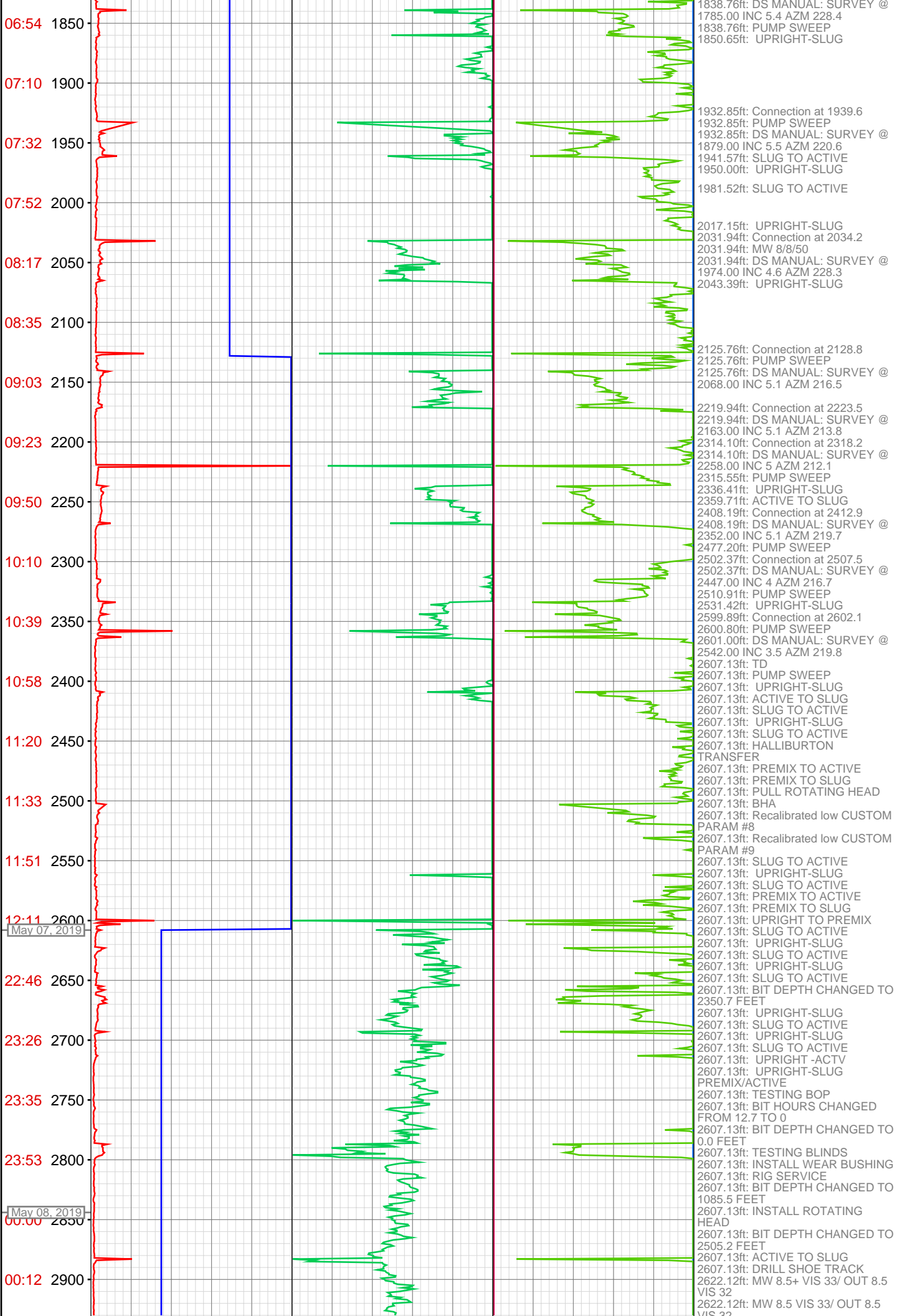
Mon Sep 30, 2019 11:22:07
Well Dossier 1557105082
Andy McCarthy

OPERATOR: Laramie Energy II, LLC
WELL: CC 0697-04-10E
FIELD:
LOCATION: LOT 12 SECTION 4 T6S R97W 6TH P.M.
COUNTRY: USA
RIG: H&P 522

CONTRACTOR: Helmerich and Payne I.D.C.
UNIQUE WELL ID: 05-045-23988-0000
SPUD DATE: May 05, 2019 19:30
RELEASE DATE: May 11, 2019 03:00







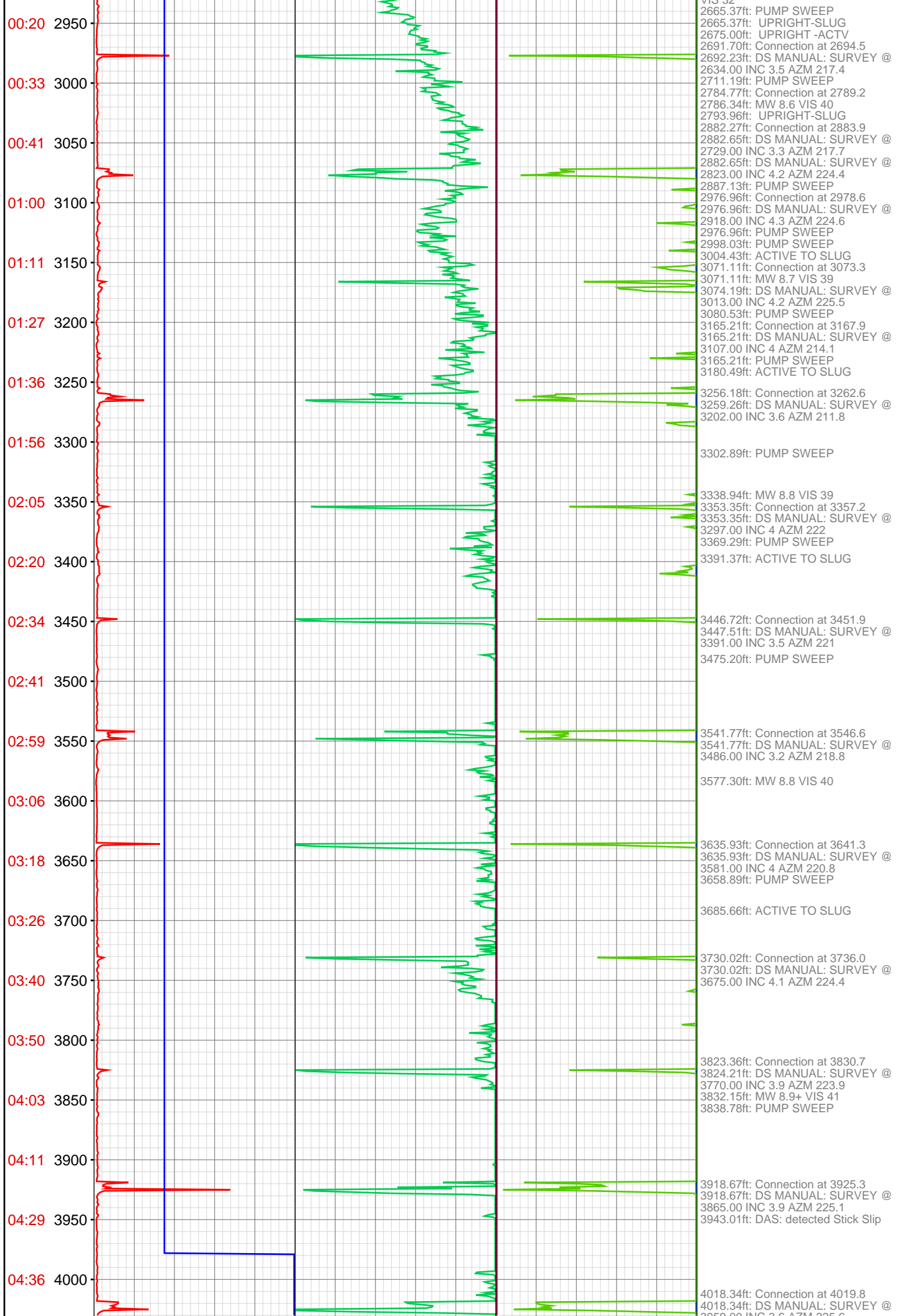
1838.76ft: DS MANUAL: SURVEY @
 1785.00 INC 5.4 AZM 228.4
 1838.76ft: PUMP SWEEP
 1850.65ft: UPRIGHT-SLUG

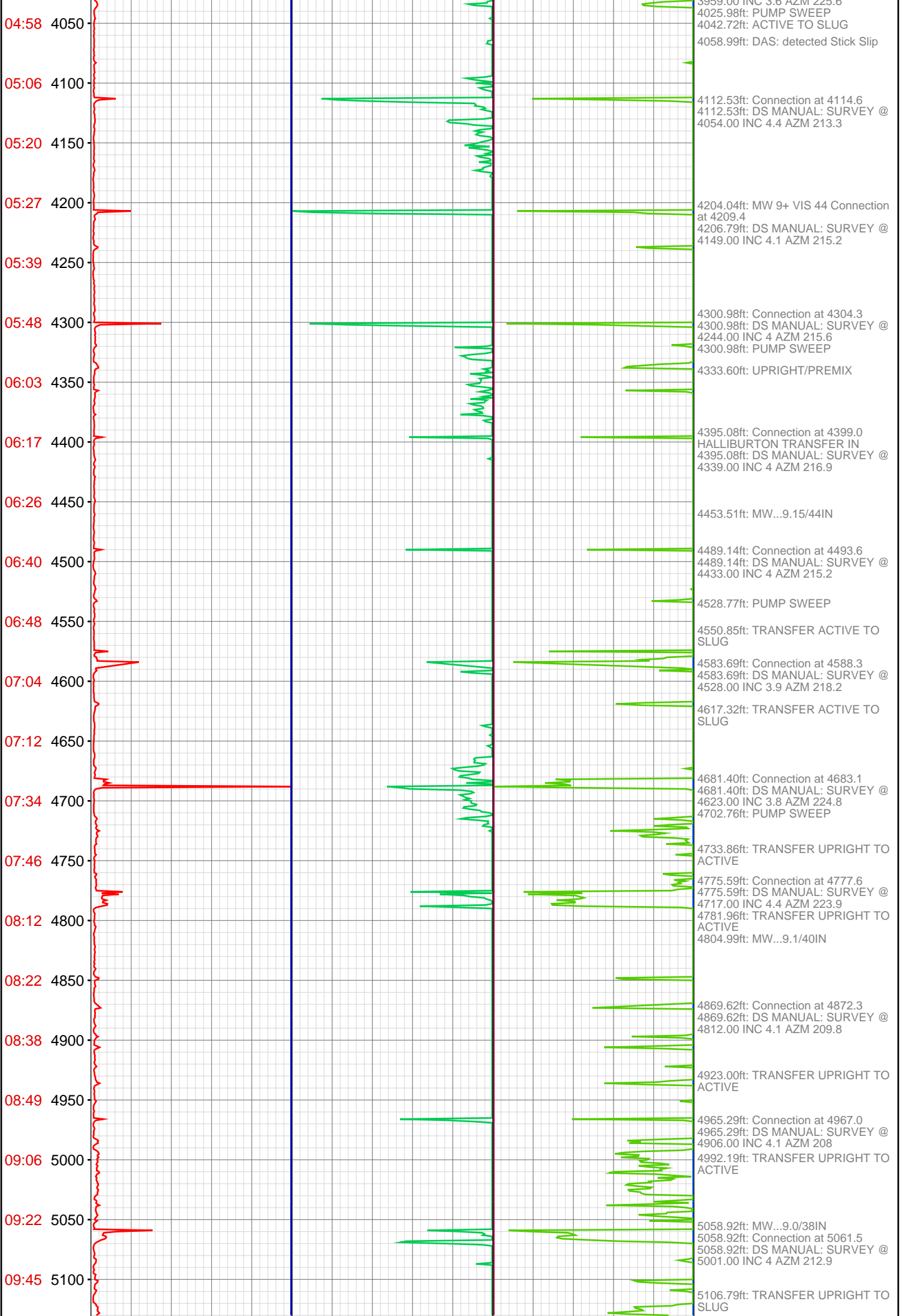
 1932.85ft: Connection at 1939.6
 1932.85ft: PUMP SWEEP
 1932.85ft: DS MANUAL: SURVEY @
 1879.00 INC 5.5 AZM 220.6
 1941.57ft: SLUG TO ACTIVE
 1950.00ft: UPRIGHT-SLUG
 1981.52ft: SLUG TO ACTIVE

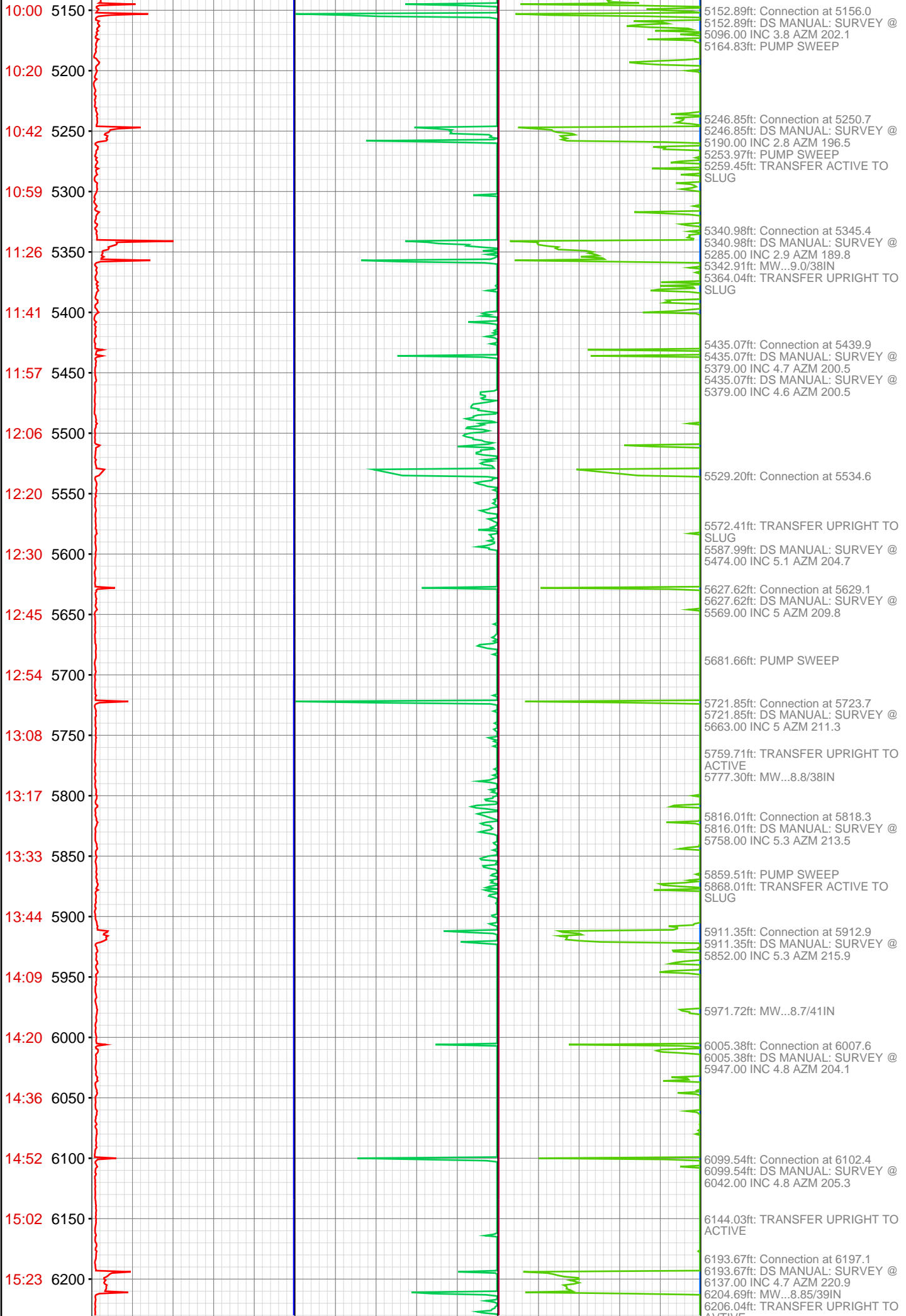
 2017.15ft: UPRIGHT-SLUG
 2031.94ft: Connection at 2034.2
 2031.94ft: MW 8/8/50
 2031.94ft: DS MANUAL: SURVEY @
 1974.00 INC 4.6 AZM 228.3
 2043.39ft: UPRIGHT-SLUG

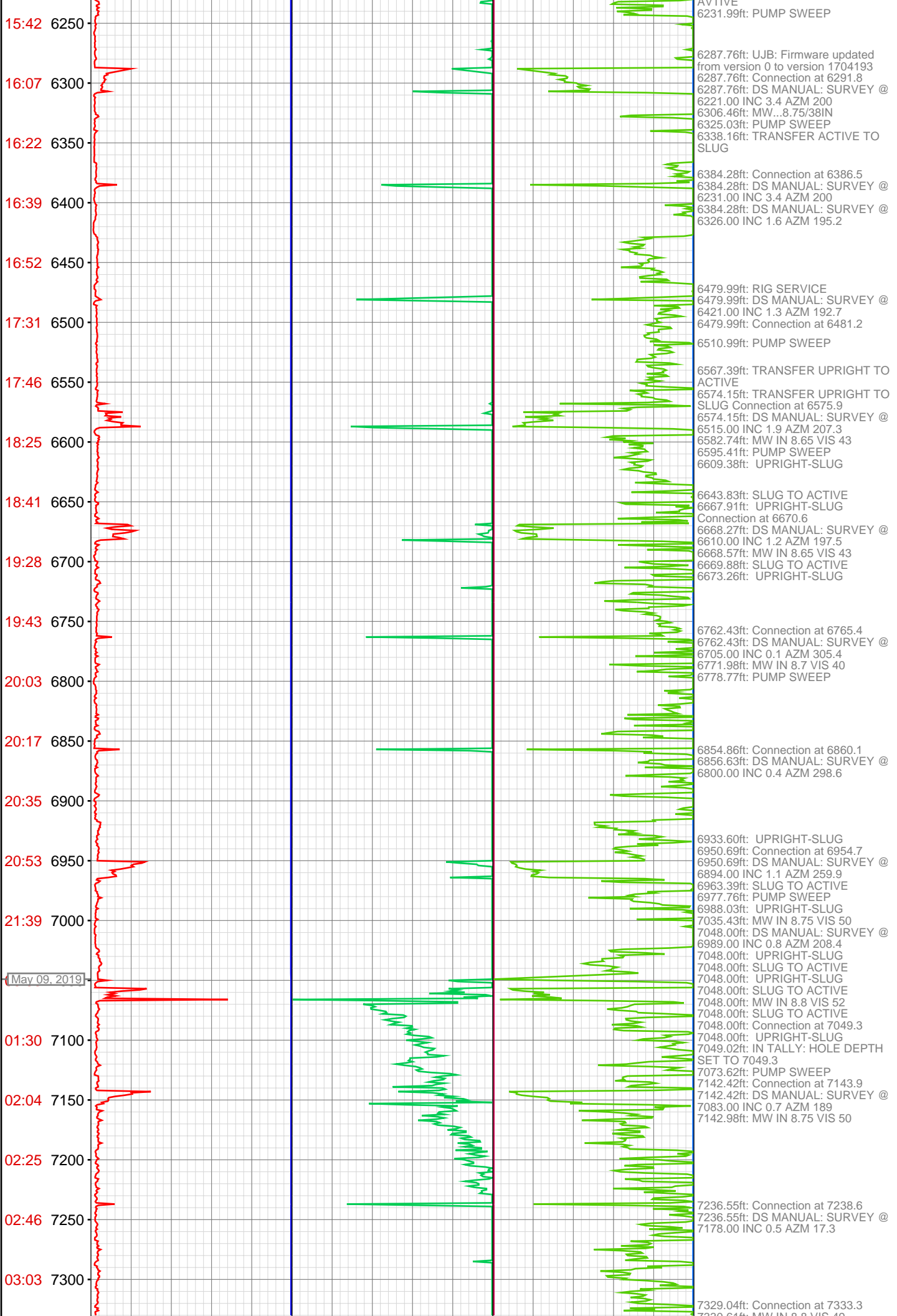
 2125.76ft: Connection at 2128.8
 2125.76ft: PUMP SWEEP
 2125.76ft: DS MANUAL: SURVEY @
 2068.00 INC 5.1 AZM 216.5

 2219.94ft: Connection at 2223.5
 2219.94ft: DS MANUAL: SURVEY @
 2163.00 INC 5.1 AZM 213.8
 2314.10ft: Connection at 2318.2
 2314.10ft: DS MANUAL: SURVEY @
 2258.00 INC 5 AZM 212.1
 2315.55ft: PUMP SWEEP
 2336.41ft: UPRIGHT-SLUG
 2359.71ft: ACTIVE TO SLUG
 2408.19ft: Connection at 2412.9
 2408.19ft: DS MANUAL: SURVEY @
 2352.00 INC 5.1 AZM 219.7
 2477.20ft: PUMP SWEEP
 2502.37ft: Connection at 2507.5
 2502.37ft: DS MANUAL: SURVEY @
 2447.00 INC 4 AZM 216.7
 2510.91ft: PUMP SWEEP
 2531.42ft: UPRIGHT-SLUG
 2599.89ft: Connection at 2602.1
 2600.80ft: PUMP SWEEP
 2601.00ft: DS MANUAL: SURVEY @
 2542.00 INC 3.5 AZM 219.8
 2607.13ft: TD
 2607.13ft: PUMP SWEEP
 2607.13ft: UPRIGHT-SLUG
 2607.13ft: ACTIVE TO SLUG
 2607.13ft: SLUG TO ACTIVE
 2607.13ft: UPRIGHT-SLUG
 2607.13ft: SLUG TO ACTIVE
 2607.13ft: HALLIBURTON
 TRANSFER
 2607.13ft: PREMIX TO ACTIVE
 2607.13ft: PREMIX TO SLUG
 2607.13ft: PULL ROTATING HEAD
 2607.13ft: BHA
 2607.13ft: Recalibrated low CUSTOM
 PARAM #8
 2607.13ft: Recalibrated low CUSTOM
 PARAM #9
 2607.13ft: SLUG TO ACTIVE
 2607.13ft: UPRIGHT-SLUG
 2607.13ft: SLUG TO ACTIVE
 2607.13ft: PREMIX TO ACTIVE
 2607.13ft: PREMIX TO SLUG
 2607.13ft: UPRIGHT TO PREMIX
 2607.13ft: SLUG TO ACTIVE
 2607.13ft: UPRIGHT-SLUG
 2607.13ft: SLUG TO ACTIVE
 2607.13ft: UPRIGHT-SLUG
 2607.13ft: SLUG TO ACTIVE
 2607.13ft: BIT DEPTH CHANGED TO
 2350.7 FEET
 2607.13ft: UPRIGHT-SLUG
 2607.13ft: SLUG TO ACTIVE
 2607.13ft: UPRIGHT-SLUG
 2607.13ft: SLUG TO ACTIVE
 2607.13ft: UPRIGHT -ACTV
 2607.13ft: UPRIGHT-SLUG
 PREMIX/ACTIVE
 2607.13ft: TESTING BOP
 2607.13ft: BIT HOURS CHANGED
 FROM 12.7 TO 0
 2607.13ft: BIT DEPTH CHANGED TO
 0.0 FEET
 2607.13ft: TESTING BLINDS
 2607.13ft: INSTALL WEAR BUSHING
 2607.13ft: RIG SERVICE
 2607.13ft: BIT DEPTH CHANGED TO
 1085.5 FEET
 2607.13ft: INSTALL ROTATING
 HEAD
 2607.13ft: BIT DEPTH CHANGED TO
 2505.2 FEET
 2607.13ft: ACTIVE TO SLUG
 2607.13ft: DRILL SHOE TRACK
 2622.12ft: MW 8.5+ VIS 33/ OUT 8.5
 VIS 32
 2622.12ft: MW 8.5 VIS 33/ OUT 8.5
 VIS 32

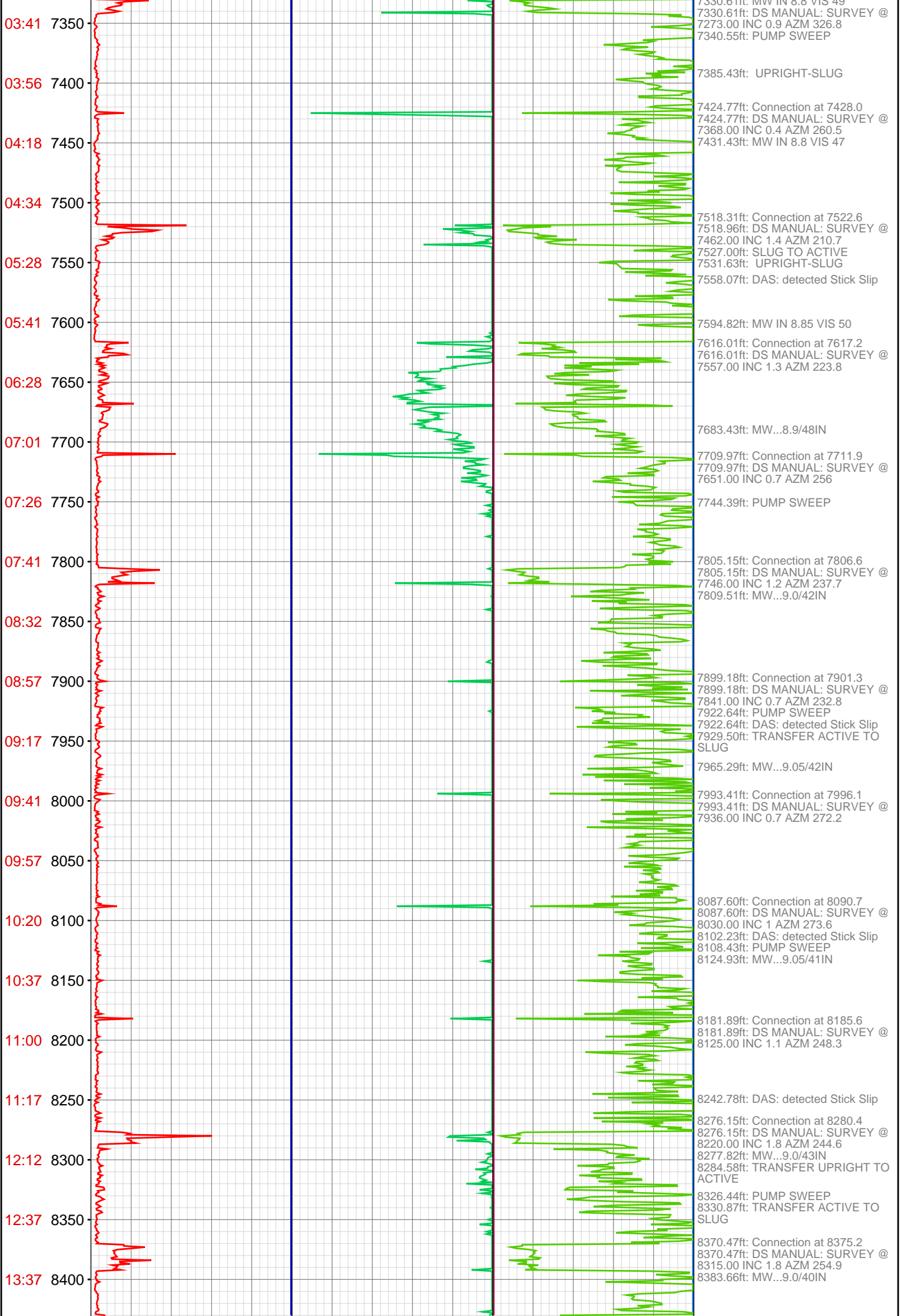


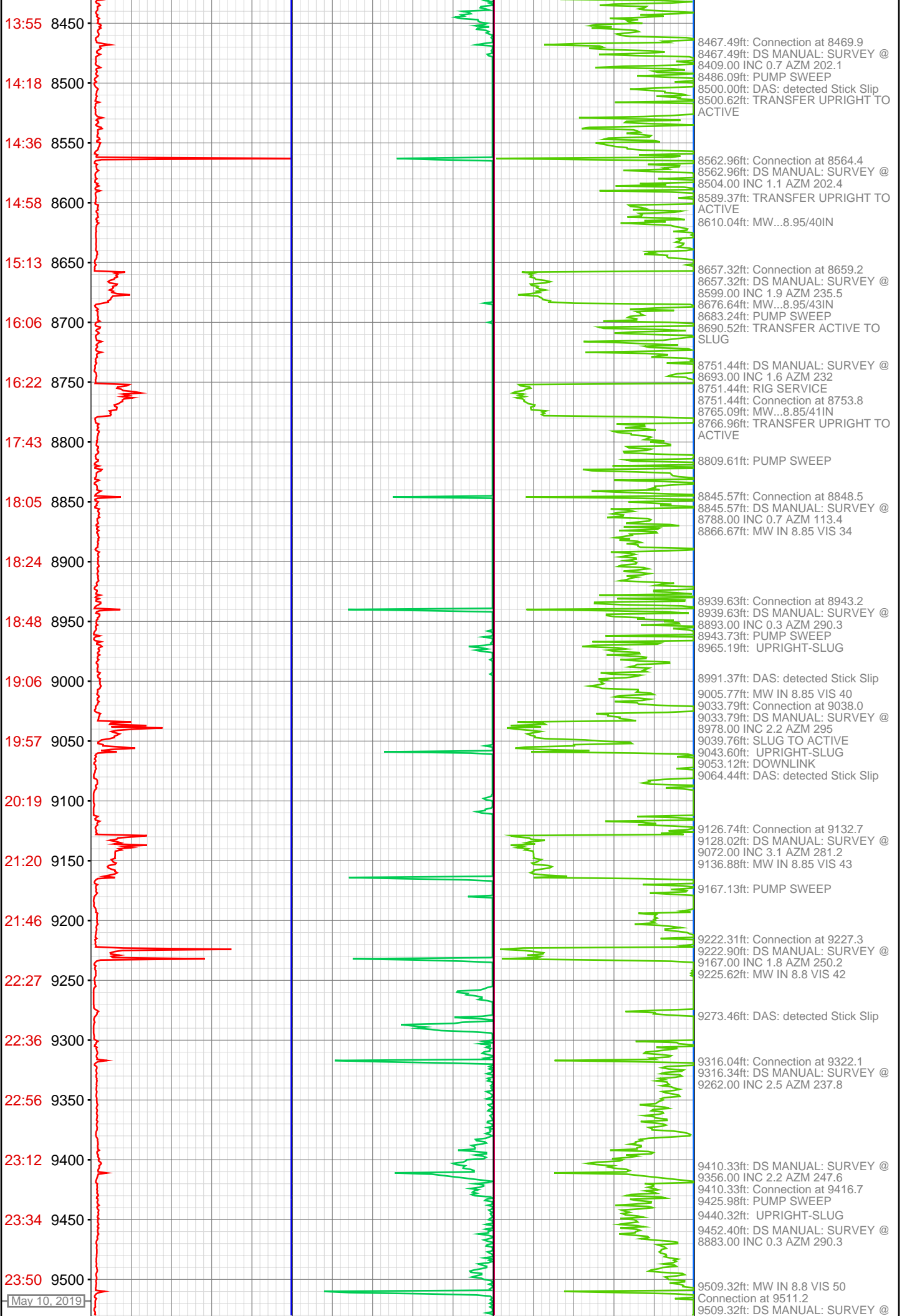






ACTIVE
6231.99ft: PUMP SWEEP
6287.76ft: UJB: Firmware updated from version 0 to version 1704193
6287.76ft: Connection at 6291.8
6287.76ft: DS MANUAL: SURVEY @ 6221.00 INC 3.4 AZM 200
6306.46ft: MW...8.75/38IN
6325.03ft: PUMP SWEEP
6338.16ft: TRANSFER ACTIVE TO SLUG
6384.28ft: Connection at 6386.5
6384.28ft: DS MANUAL: SURVEY @ 6231.00 INC 3.4 AZM 200
6384.28ft: DS MANUAL: SURVEY @ 6326.00 INC 1.6 AZM 195.2
6479.99ft: RIG SERVICE
6479.99ft: DS MANUAL: SURVEY @ 6421.00 INC 1.3 AZM 192.7
6479.99ft: Connection at 6481.2
6510.99ft: PUMP SWEEP
6567.39ft: TRANSFER UPRIGHT TO ACTIVE
6574.15ft: TRANSFER UPRIGHT TO SLUG Connection at 6575.9
6574.15ft: DS MANUAL: SURVEY @ 6515.00 INC 1.9 AZM 207.3
6582.74ft: MW IN 8.65 VIS 43
6595.41ft: PUMP SWEEP
6609.38ft: UPRIGHT-SLUG
6643.83ft: SLUG TO ACTIVE
6667.91ft: UPRIGHT-SLUG Connection at 6670.6
6668.27ft: DS MANUAL: SURVEY @ 6610.00 INC 1.2 AZM 197.5
6668.57ft: MW IN 8.65 VIS 43
6669.88ft: SLUG TO ACTIVE
6673.26ft: UPRIGHT-SLUG
6762.43ft: Connection at 6765.4
6762.43ft: DS MANUAL: SURVEY @ 6705.00 INC 0.1 AZM 305.4
6771.98ft: MW IN 8.7 VIS 40
6778.77ft: PUMP SWEEP
6854.86ft: Connection at 6860.1
6856.63ft: DS MANUAL: SURVEY @ 6800.00 INC 0.4 AZM 298.6
6933.60ft: UPRIGHT-SLUG
6950.69ft: Connection at 6954.7
6950.69ft: DS MANUAL: SURVEY @ 6894.00 INC 1.1 AZM 259.9
6963.39ft: SLUG TO ACTIVE
6977.76ft: PUMP SWEEP
6988.03ft: UPRIGHT-SLUG
7035.43ft: MW IN 8.75 VIS 50
7048.00ft: DS MANUAL: SURVEY @ 6989.00 INC 0.8 AZM 208.4
7048.00ft: UPRIGHT-SLUG
7048.00ft: SLUG TO ACTIVE
7048.00ft: UPRIGHT-SLUG
7048.00ft: SLUG TO ACTIVE
7048.00ft: MW IN 8.8 VIS 52
7048.00ft: SLUG TO ACTIVE
7048.00ft: Connection at 7049.3
7048.00ft: UPRIGHT-SLUG
7049.02ft: IN TALLY: HOLE DEPTH SET TO 7049.3
7073.62ft: PUMP SWEEP
7142.42ft: Connection at 7143.9
7142.42ft: DS MANUAL: SURVEY @ 7083.00 INC 0.7 AZM 189
7142.98ft: MW IN 8.75 VIS 50
7236.55ft: Connection at 7238.6
7236.55ft: DS MANUAL: SURVEY @ 7178.00 INC 0.5 AZM 17.3
7329.04ft: Connection at 7333.3
7329.04ft: MW IN 8.8 VIS 40





13:55 8450

8467.49ft: Connection at 8469.9
 8467.49ft: DS MANUAL: SURVEY @
 8409.00 INC 0.7 AZM 202.1
 8486.09ft: PUMP SWEEP
 8500.00ft: DAS: detected Stick Slip
 8500.62ft: TRANSFER UPRIGHT TO
 ACTIVE

14:18 8500

14:36 8550

8562.96ft: Connection at 8564.4
 8562.96ft: DS MANUAL: SURVEY @
 8504.00 INC 1.1 AZM 202.4

14:58 8600

8589.37ft: TRANSFER UPRIGHT TO
 ACTIVE
 8610.04ft: MW...8.95/40IN

15:13 8650

8657.32ft: Connection at 8659.2
 8657.32ft: DS MANUAL: SURVEY @
 8599.00 INC 1.9 AZM 235.5
 8676.64ft: MW...8.95/43IN

16:06 8700

8683.24ft: PUMP SWEEP
 8690.52ft: TRANSFER ACTIVE TO
 SLUG

16:22 8750

8751.44ft: DS MANUAL: SURVEY @
 8693.00 INC 1.6 AZM 232
 8751.44ft: RIG SERVICE
 8751.44ft: Connection at 8753.8
 8765.09ft: MW...8.85/41IN

17:43 8800

8766.96ft: TRANSFER UPRIGHT TO
 ACTIVE

18:05 8850

8809.61ft: PUMP SWEEP

18:24 8900

8845.57ft: Connection at 8848.5
 8845.57ft: DS MANUAL: SURVEY @
 8788.00 INC 0.7 AZM 113.4
 8866.67ft: MW IN 8.85 VIS 34

18:48 8950

8939.63ft: Connection at 8943.2
 8939.63ft: DS MANUAL: SURVEY @
 8893.00 INC 0.3 AZM 290.3
 8943.73ft: PUMP SWEEP
 8965.19ft: UPRIGHT-SLUG

19:06 9000

8991.37ft: DAS: detected Stick Slip
 9005.77ft: MW IN 8.85 VIS 40
 9033.79ft: Connection at 9038.0
 9033.79ft: DS MANUAL: SURVEY @
 8978.00 INC 2.2 AZM 295
 9039.76ft: SLUG TO ACTIVE
 9043.60ft: UPRIGHT-SLUG
 9053.12ft: DOWNLINK
 9064.44ft: DAS: detected Stick Slip

19:57 9050

20:19 9100

9126.74ft: Connection at 9132.7
 9128.02ft: DS MANUAL: SURVEY @
 9072.00 INC 3.1 AZM 281.2
 9136.88ft: MW IN 8.85 VIS 43

21:20 9150

9167.13ft: PUMP SWEEP

21:46 9200

9222.31ft: Connection at 9227.3
 9222.90ft: DS MANUAL: SURVEY @
 9167.00 INC 1.8 AZM 250.2
 9225.62ft: MW IN 8.8 VIS 42

22:27 9250

9273.46ft: DAS: detected Stick Slip

22:36 9300

9316.04ft: Connection at 9322.1
 9316.34ft: DS MANUAL: SURVEY @
 9262.00 INC 2.5 AZM 237.8

22:56 9350

23:12 9400

9410.33ft: DS MANUAL: SURVEY @
 9356.00 INC 2.2 AZM 247.6
 9410.33ft: Connection at 9416.7
 9425.98ft: PUMP SWEEP

23:34 9450

9440.32ft: UPRIGHT-SLUG
 9452.40ft: DS MANUAL: SURVEY @
 8883.00 INC 0.3 AZM 290.3

23:50 9500

9509.32ft: MW IN 8.8 VIS 50
 Connection at 9511.2
 9509.32ft: DS MANUAL: SURVEY @

