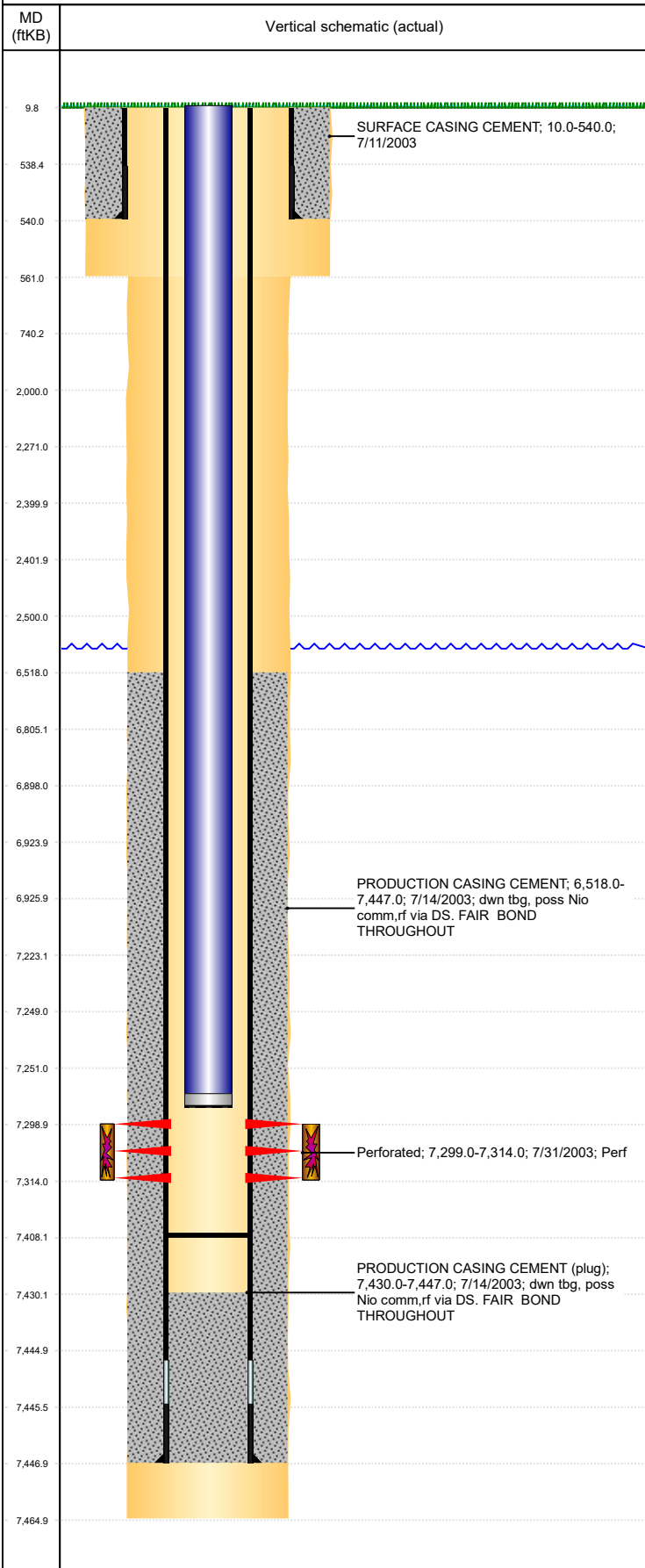


Well Name: STROH O02-08

VERTICAL, ORIGINAL HOLE, 10/21/2019 10:46:38 AM



Well Header									
API 05-123-21406		Business Unit DJ BASIN			District 15		Well Config VERTICAL		
KB - GL / MSL (ft... 10.00		Spud Date 7/10/2003		P & A Date		Well Production Status SI			SoRT No
Comment FORM 5 HAS TD 7/13/03. DRILL REPORTS SHOW TD 7/14 @ 00.30 HRS. FORM 5 SAYS PROD CSG SET @ 7446 BUT DRILL REPORT SAYS SET @ 7447.									
Surface Location (Congressional)									
Qtr 3 SE	Qtr 4 NE	Section 2	Twnshp 4	Twnsh... N	Range 67	Rng E/... W	Actual Latitude (°) 40.34340010		Actual Longitude (°) -104.85019906
Wellbore Sections									
Section Des			Size (in)			Act Top, MD (ftKB)		Act Btm, MD (ftKB)	
SURFACE			12 1/4			10		561	
PRODUCTION			7 7/8			561		7,465	
Casing Strings									
Csg Des		Run Date		OD (in)	Wt/Len (lb/ft)	Grade	Top, MD (ftKB)	MD (ftKB)	
Surface		7/11/2003		8 5/8	24.00	J-55	10.0	540.0	
Production		7/14/2003		4 1/2	11.60	M-80	10.0	7,447.0	
Cement									
Des				Start Date		Top (ftKB)		Btm (ftKB)	
SURFACE CASING CEMENT				7/11/2003		10.0		540.0	
PRODUCTION CASING CEMENT				7/14/2003		6,518.0		7,447.0	
Zone Statuses									
CODE Name	Status Date	Status	Fluid Type	Job				Prod Method	
Zone Name	2/21/2012	PR	Oil	TRI-FRAC, 1/3/2012 00:00					
CODELL	2/9/2017	SI							
Perforation Data									
Linked Zone		Bnch/Stg	Entered Shot Total	Top (ftKB)		Btm (ftKB)		Date	
CODELL, ORIGINAL HOLE			60	7,299.00		7,314.00		7/31/2003	
Stimulation Intervals									
Zone			Start Date			Top (ftKB)		Btm (ftKB)	
CODELL, ORIGINAL HOLE			8/5/2003			7,299.0		7,314.0	
CODELL, ORIGINAL HOLE			2/24/2006			7,299.0		7,314.0	
CODELL, ORIGINAL HOLE			1/10/2012			7,299.0		7,314.0	
			1/10/2012			7,299.0		6,805.0	
Other In Hole									
Run Date		Des				OD (in)	Top (ftKB)	Btm (ftKB)	
Logs									
Date		Type				Top, MD (ftKB)		Btm, MD (ftKB)	
7/14/2003		COMPENSATED DENSITY				4,300.0		7,445.0	
7/14/2003		DUAL INDUCTION				540.0		7,465.0	
7/31/2003		CBL/CCL/GR				6,400.0		7,415.0	
7/28/2016		GYRO				0.0		7,100.0	
Plug Back Total Depths									
Date		Type		Com				Depth (ftKB)	
1/4/2012		FILL		RIH FOR TRIFRAC, TAG @ DEPTH, LEAVING 77' RAT HOLE				7,391.0	
1/13/2012		FILL		FILL				7,408.0	