

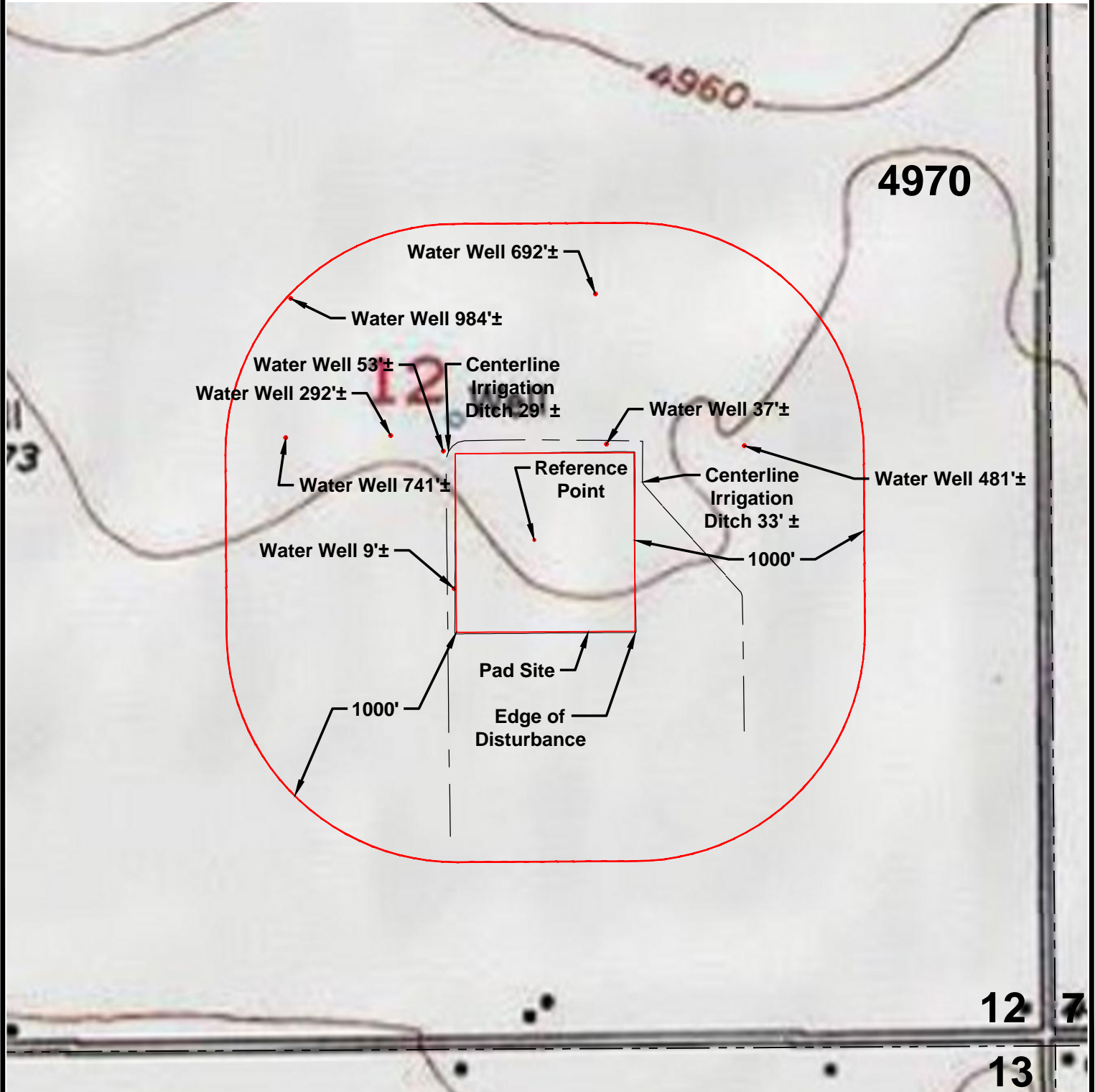
HYDROLOGY MAP

NW 1/4 SE 1/4 SECTION 12
T1N R65W 6TH PM
WELD COUNTY, COLORADO



SCALE: 1" = 600'

0' 300' 600'



VERDAD RESOURCES
SAFI 1224
JOB NO. 125170

MAPP October 16, 2019

SHEET: 1 OF 1

FILE: F2A_SAFI_1224_HYDROLOGY_REV4

REVISION:

INT DATE

NOTE:
ALL PRODUCTION
FACILITIES WILL BE ON PAD

