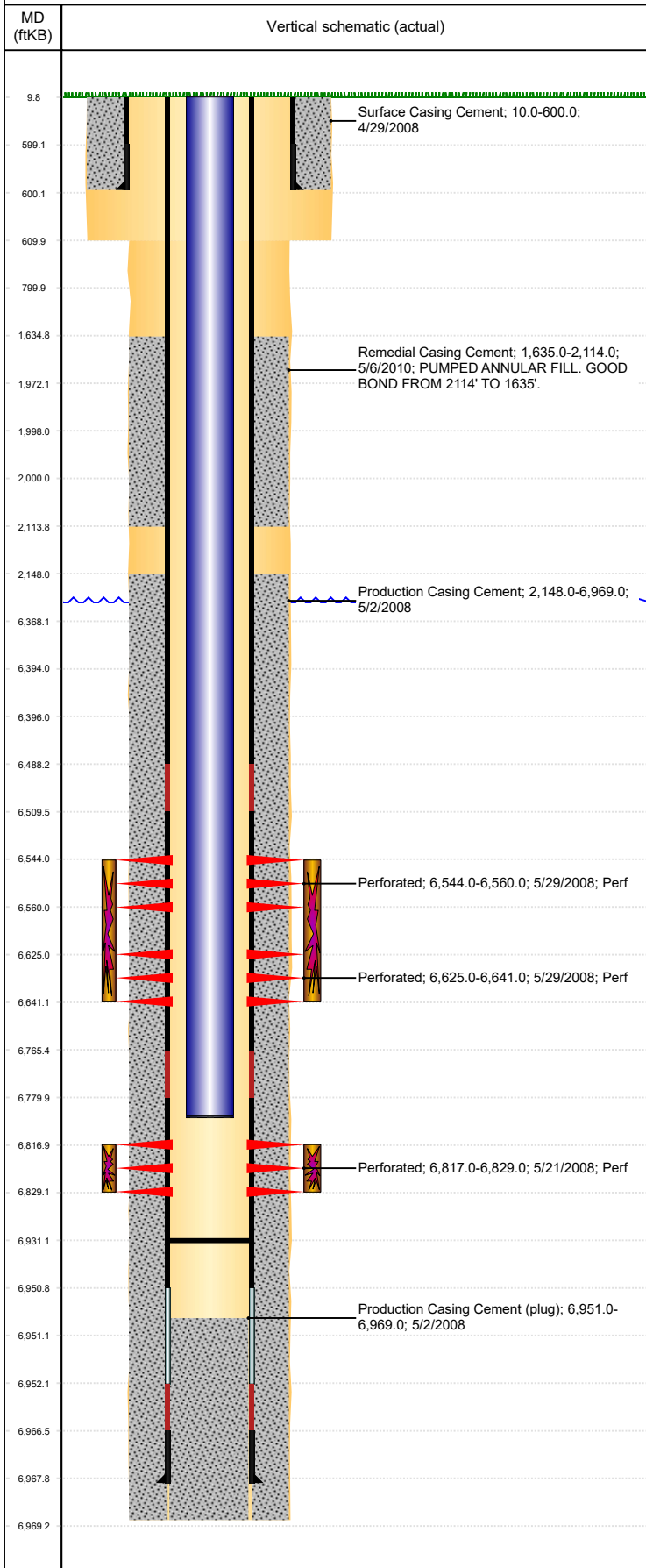


Well Name: RYANN STATE C16-01

VERTICAL, ORIGINAL HOLE, 10/21/2019 10:27:06 AM



Well Header									
API 05-123-25556		Business Unit DJ BASIN			District 15		Well Config VERTICAL		
KB - GL / MSL (ft... 10.00		Spud Date 4/28/2008		P & A Date		Well Production Status SI			SoRT No
Comment									
Surface Location (Congressional)									
Qtr 3 NE	Qtr 4 NE	Section 16	Twonshp 4	Twonsh... N	Range 64	Rng E/... W	Actual Latitude (°) 40.31782357	Actual Longitude (°) -104.54852663	
Wellbore Sections									
Section Des			Size (in)			Act Top, MD (ftKB)		Act Btm, MD (ftKB)	
SURFACE			12 1/4			10		610	
PRODUCTION			7 7/8			610		6,969	
Casing Strings									
Csg Des			Run Date		OD (in)	Wt/Len (lb/ft)	Grade	Top, MD (ftKB)	MD (ftKB)
Surface			4/29/2008		8 5/8	24.00	J-55	10.0	600.0
Production			5/2/2008		4 1/2	11.60	M-80	9.9	6,968.0
Cement									
Des					Start Date		Top (ftKB)		Btm (ftKB)
Surface Casing Cement					4/29/2008		10.0		600.0
Production Casing Cement					5/2/2008		2,148.0		6,969.0
Remedial Casing Cement					5/6/2010		1,635.0		2,114.0
Zone Statuses									
Zone Name	Status Date	Status	Fluid Type	Job				Prod Method	
NIOBRARA	4/16/2010	PR	Water					Flowing	
NIOBRARA	11/29/2016	SI	Water						
CODELL	4/16/2010	PR	Water					Flowing	
CODELL	11/29/2016	SI							
Perforation Data									
Linked Zone			Bnch/Stg	Entered Shot Total	Top (ftKB)		Btm (ftKB)		Date
NIOBRARA, ORIGINAL HOLE				64	6,544.00		6,560.00		5/29/2008
NIOBRARA, ORIGINAL HOLE				64	6,625.00		6,641.00		5/29/2008
CODELL, ORIGINAL HOLE				48	6,817.00		6,829.00		5/21/2008
Stimulation Intervals									
Zone					Start Date		Top (ftKB)		Btm (ftKB)
NIOBRARA, ORIGINAL HOLE					5/29/2008		6,544.0		6,641.0
CODELL, ORIGINAL HOLE					5/29/2008		6,817.0		6,829.0
Other In Hole									
Run Date		Des				OD (in)	Top (ftKB)		Btm (ftKB)
6/28/2016		Plunger Lift				1 7/8			
Logs									
Date		Type					Top, MD (ftKB)		Btm, MD (ftKB)
5/2/2008		Caliper/Comp. Density/Neutron/GR/SP/ML					2,600.0		6,952.0
5/2/2008		DIL/GR/SP/Caliper					599.0		6,972.0
5/20/2008		CBL/CCL/GR					2,000.0		6,905.0
5/7/2010		CBL/CCL/GR					10.0		2,399.0
5/4/2011		GYRO					10.0		6,700.0
Plug Back Total Depths									
Date		Type			Com				Depth (ftKB)
1/5/2009		PLUG REMNANTS			SLICK LINE TAG				6,949.0
5/5/2010		FILL							6,931.0