

Grand Mesa Operating CO, Betty 1-15
073-06750

Inspection #688306026

10/16/2019

Routine Inspection

GRAND MESA OPERATING COMPANY
316-265-3000
BETTY LEASE
SE SW SECT 15-7S-55W, CR 28 & 3V
LINCOLN COUNTY, CO
IN CASE OF EMERGENCY CALL 911

Colorado Oil and Gas Conservation Commission
39.43447, -103.54778, 5357.6ft, 91°
10/16/2019 01:41:58 PM



Colorado Oil and Gas Conservation Commission
39.43389, -103.53988, 5321.5ft, 172°
10/16/2019 01:21:24 PM



Colorado Oil and Gas Conservation Commission
39.43312, -103.54025, 5400.3ft, 217°
10/18/2019 10:33:54 AM



Colorado Oil and Gas Conservation Commission
39.43313, -103.54027, 5403.5ft, 224°
10/18/2019 10:33:59 AM



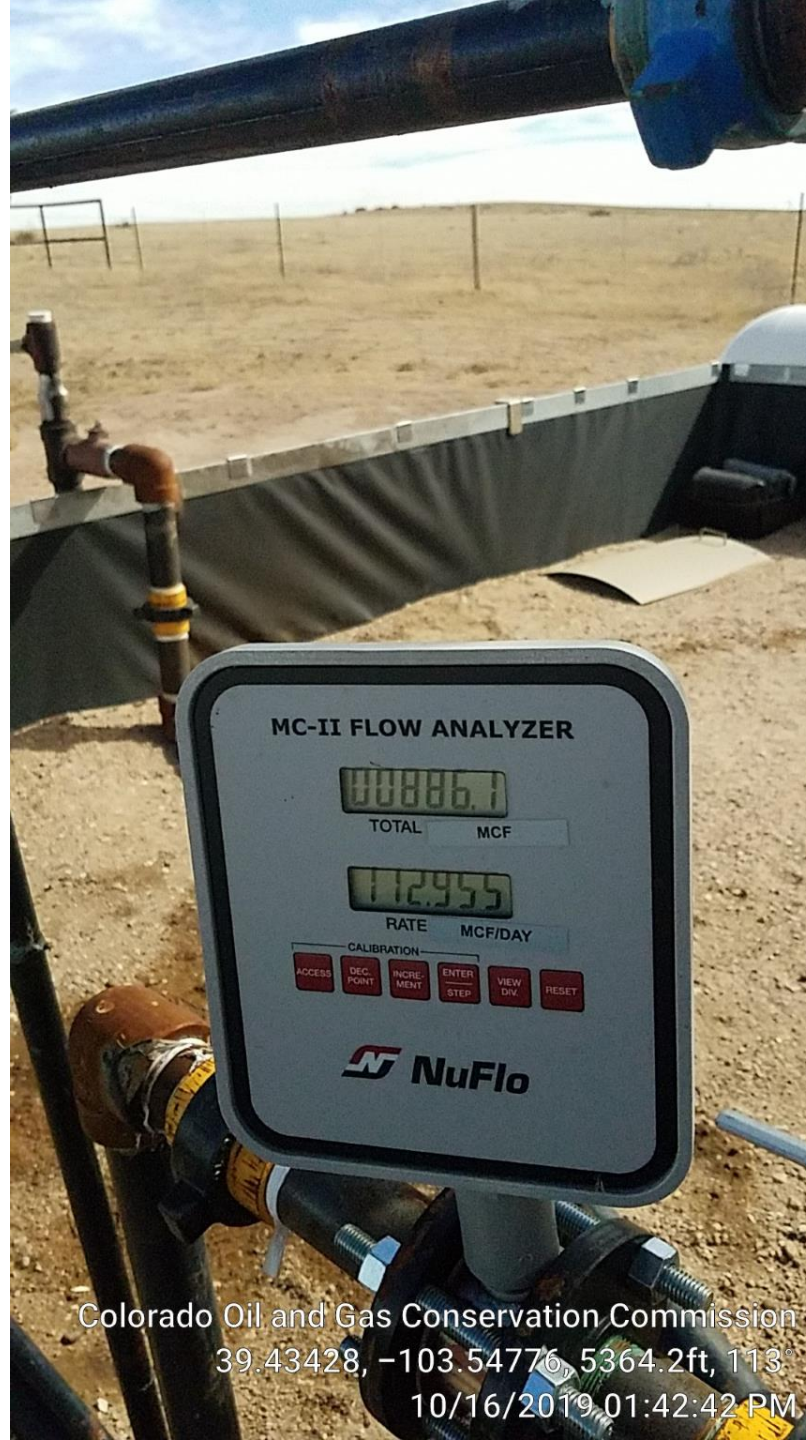
Colorado Oil and Gas Conservation Commission
39.43445, -103.54784, 5374.0ft, 139°
10/16/2019 01:42:02 PM



Colorado Oil and Gas Conservation Commission
39.43428, -103.54787, 5367.5ft, 100°
10/16/2019 01:42:22 PM



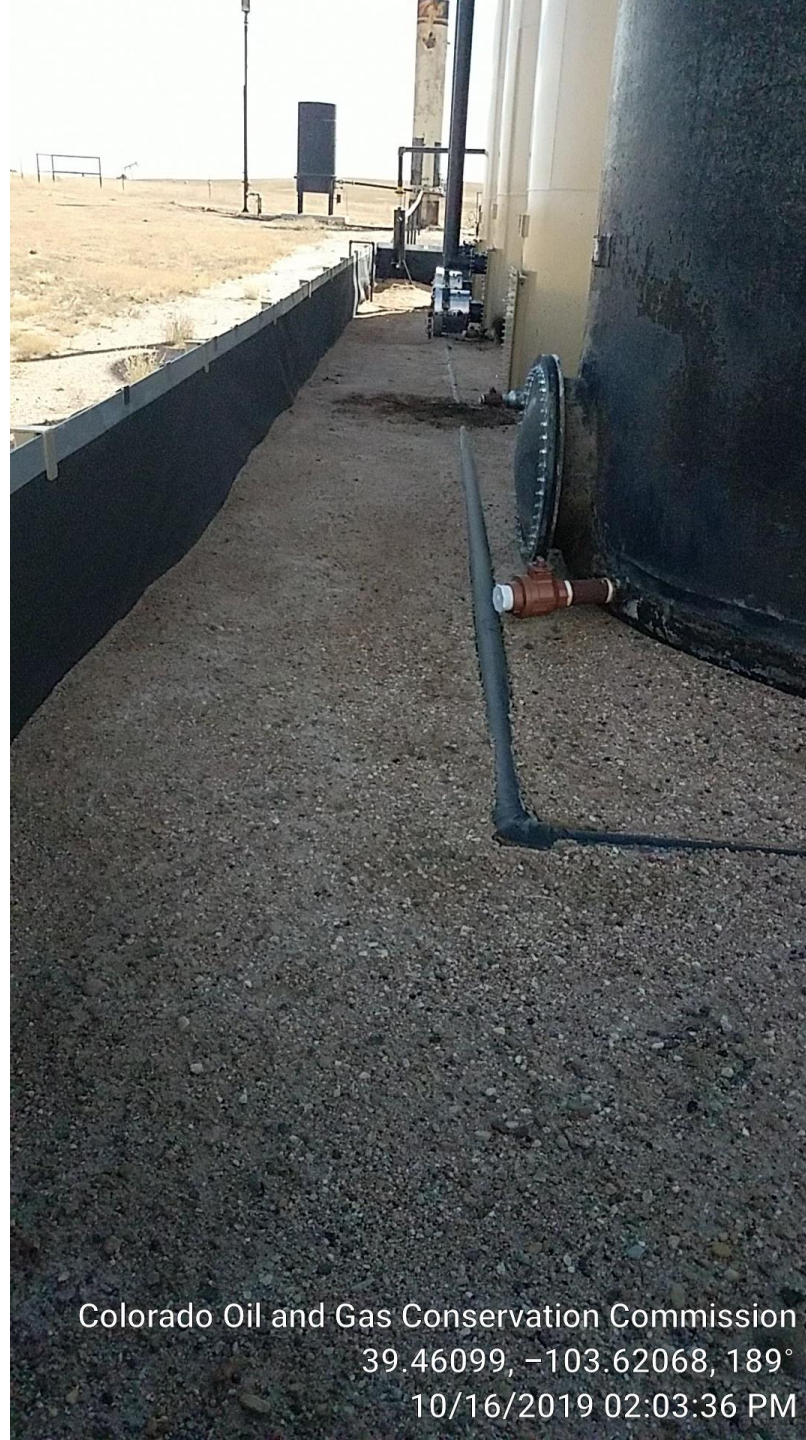
Colorado Oil and Gas Conservation Commission
39.43428, -103.54777, 5360.9ft, 143°
10/16/2019 01:42:38 PM



Colorado Oil and Gas Conservation Commission
39.43428, -103.54776, 5364.2ft, 113°
10/16/2019 01:42:42 PM



Colorado Oil and Gas Conservation Commission
39.43425, -103.54782, 5364.2ft, 51°
.10/16/2019 01:43:42 PM



Colorado Oil and Gas Conservation Commission
39.46099, -103.62068, 189°
10/16/2019 02:03:36 PM

400BBL



Colorado Oil and Gas Conservation Commission
39.43465, -103.5478, 5357.6ft, 85°
10/16/2019 02:04:06 PM