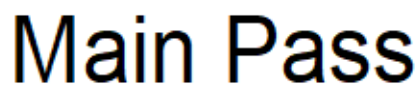


<<< Fold Here >>>
All interpretations are opinions based on inferences from electrical or other measurements and we cannot and do not guarantee the accuracy or correctness of any interpretation, and we shall not, except in the case of gross or willful negligence on our part, be liable or responsible for any loss, costs, damages, or expenses incurred or sustained by anyone resulting from any interpretation made by any of our officers, agents or employees. These interpretations are also subject to our general terms and conditions set out in our current Price Schedule.
Comments
<p>This well is an Offset Well Depth referenced to Reliance RBL dated 03-SEP-2019 Reliance Hunter RAS PN data was collected on this well Training Well: CC 0697-04-08E TW models were built using Schlumberger OH provided by the client and Reliance Hunter PN data Density Porosity Matrix = 2.68 g/cc Emulation results may be affected by areas of poor bond Emulation results may be affected by washouts and quality of OH data Thank you for choosing Reliance Oilfield Services, LLC!</p>



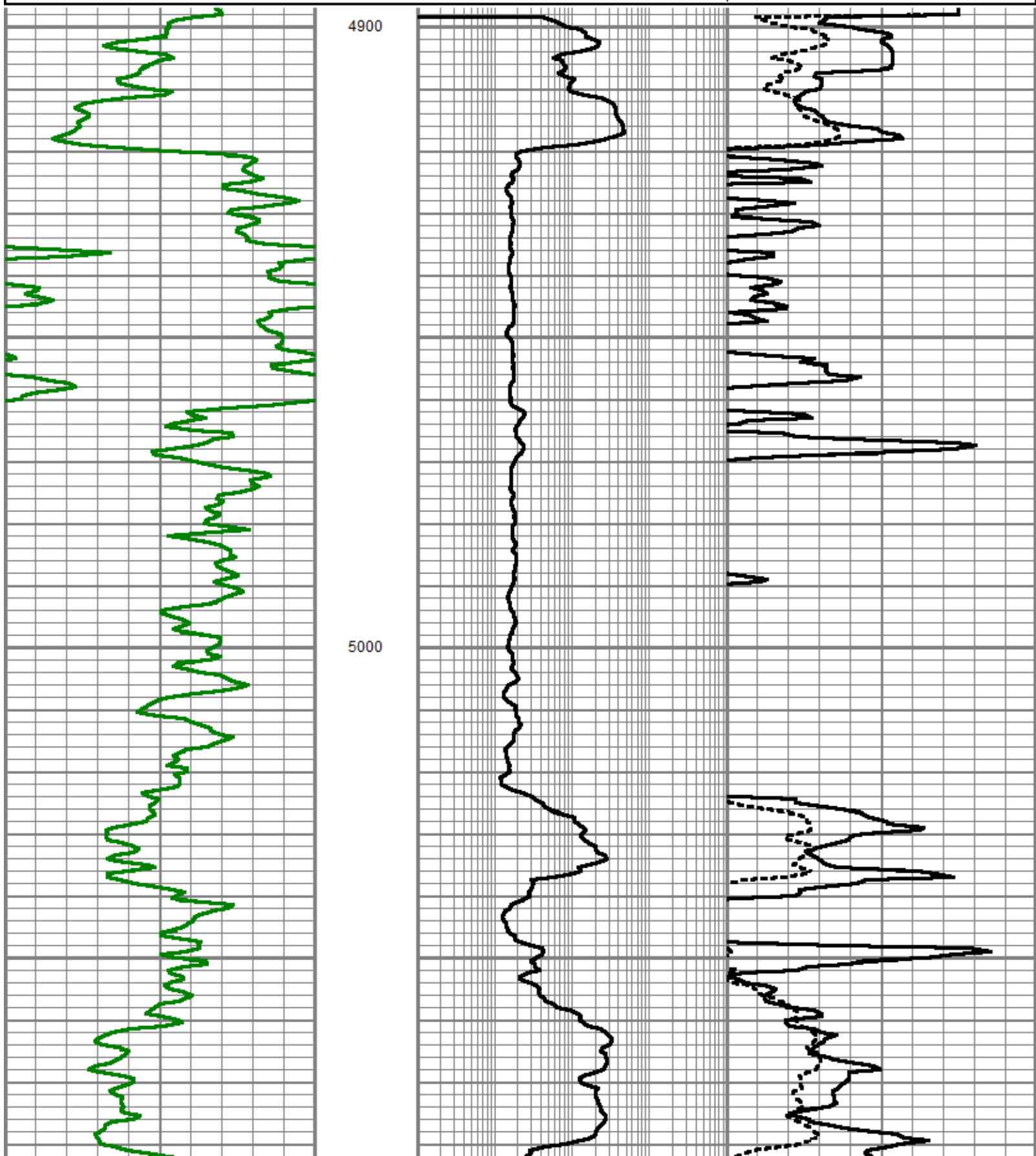
Database File	laramie energy_cc federal 0697-03-08w\processed_laramie energy_cc federal 0697-03-08w_pn_09-05-19.db
Dataset Pathname	EMULATION/merge1
Presentation Format	ros_emulation_output
Dataset Creation	Thu Sep 19 05:58:23 2019
Charted by	Depth in Feet scaled 1:240

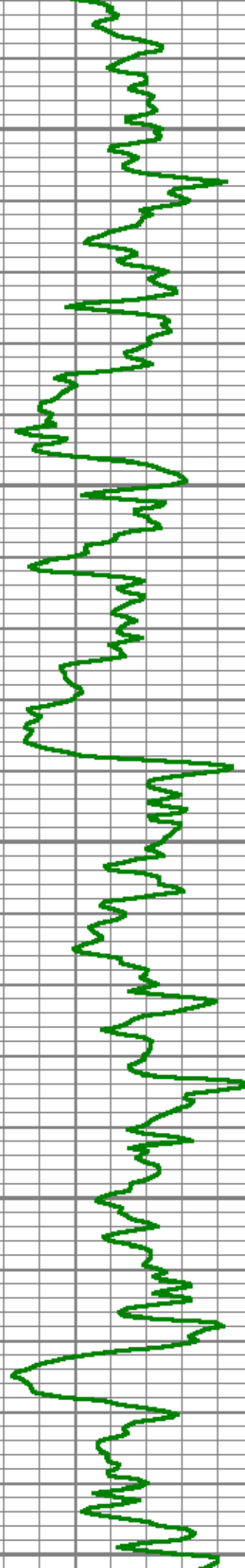
0 Normalized Gamma Ray (GAPI) 150

0.2 Emulated Resistivity (Ohm-m) 2000

0.3 Emulated Density Porosity -0.1

0.3 Emulated Neutron Porosity -0.1

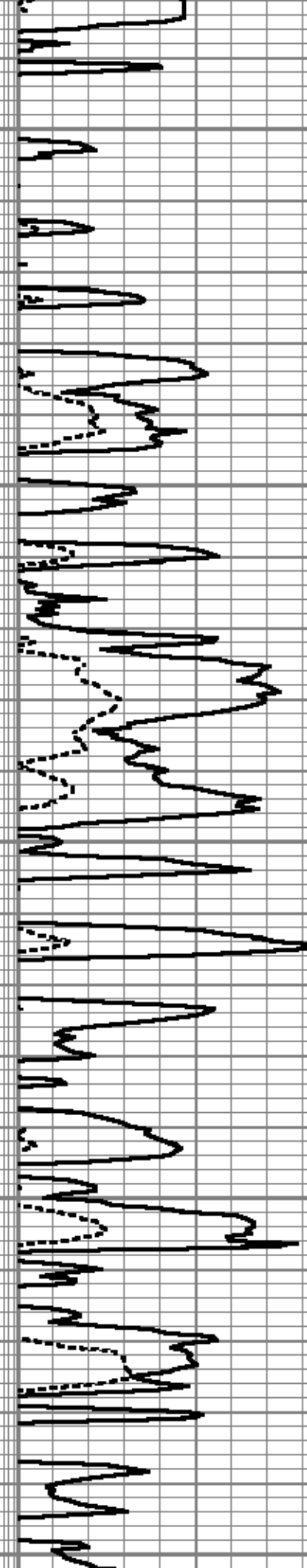


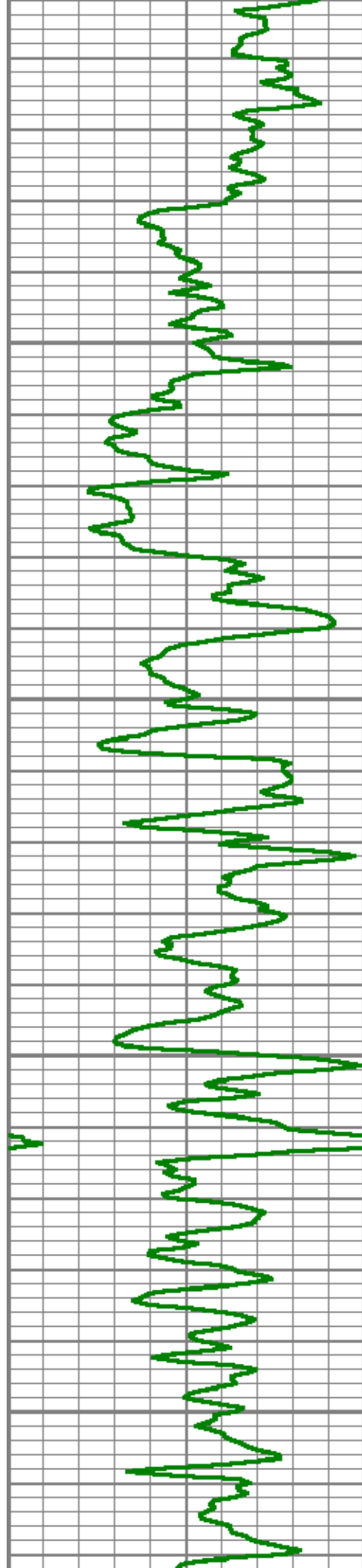


5100

5200

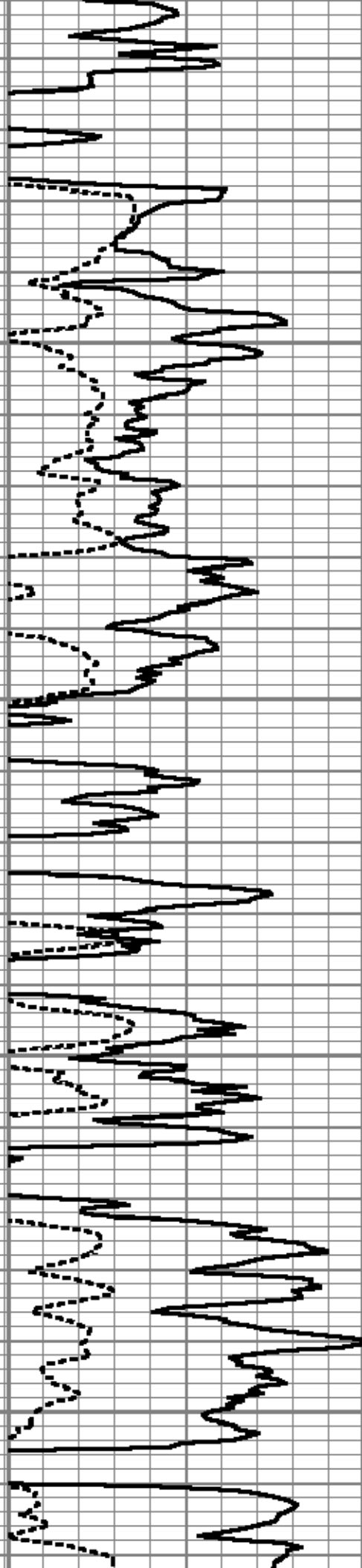
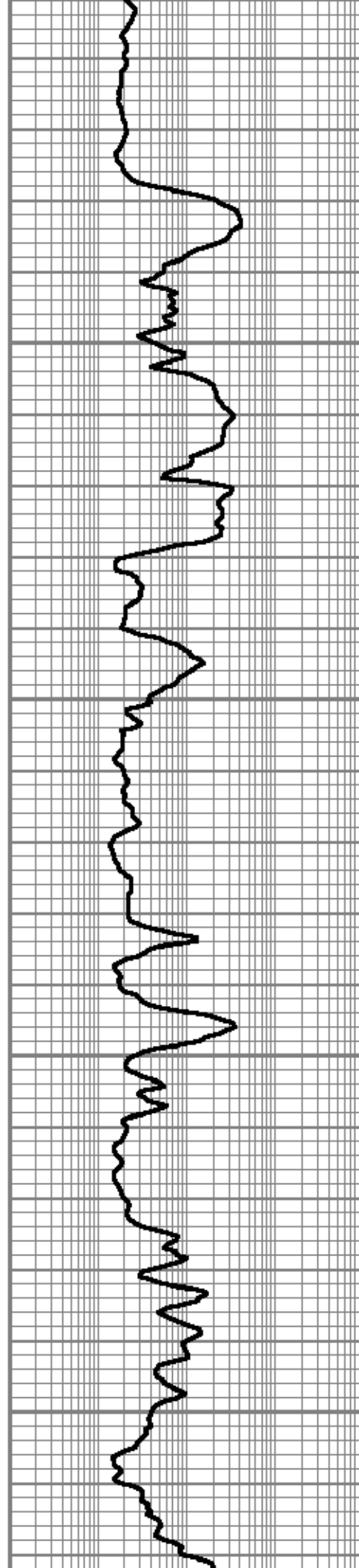
5300

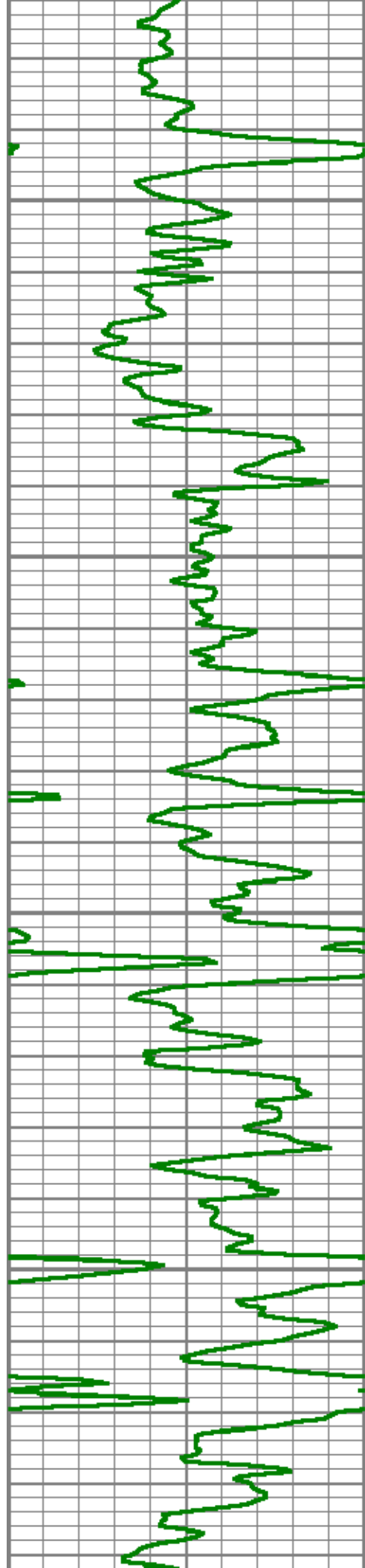




5400

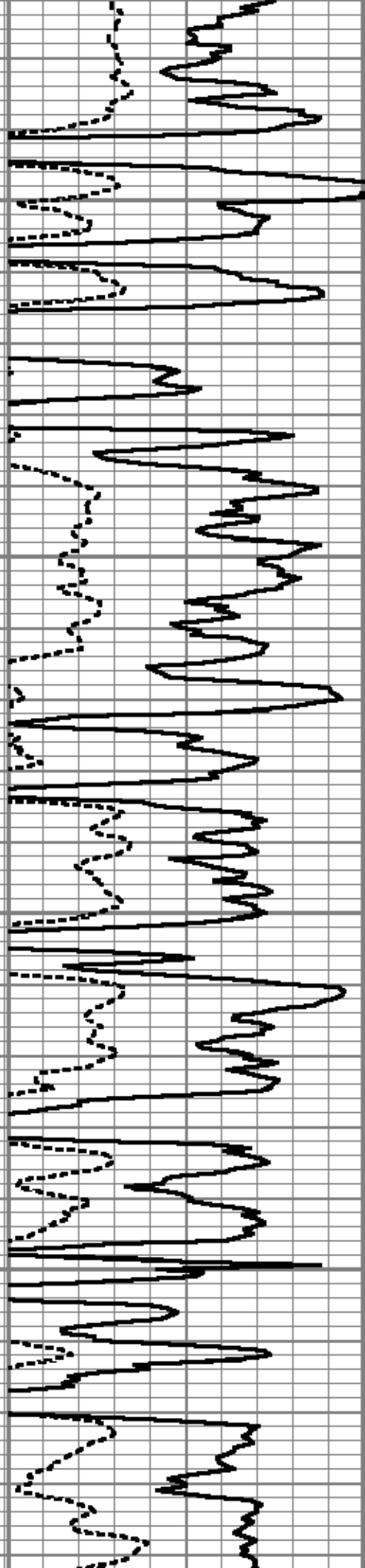
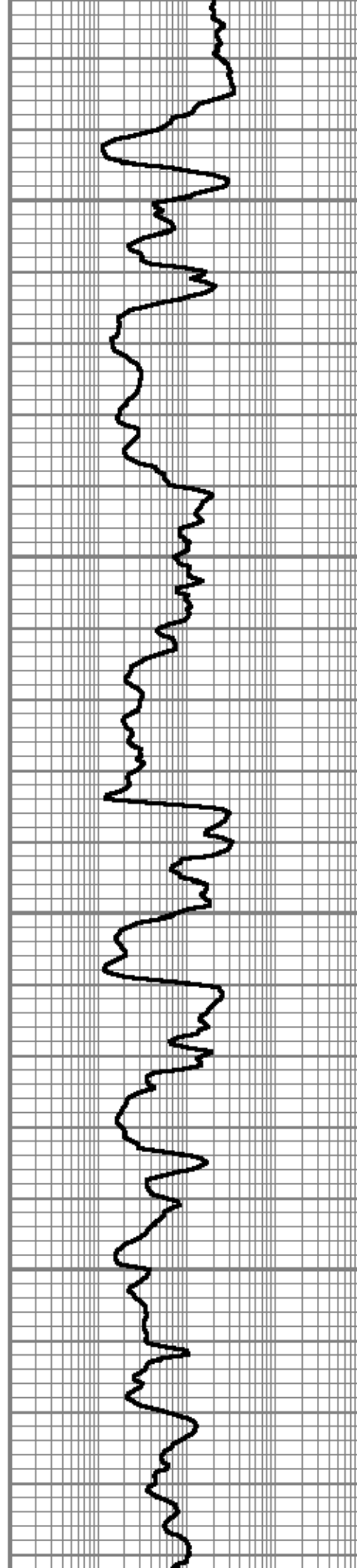
5500

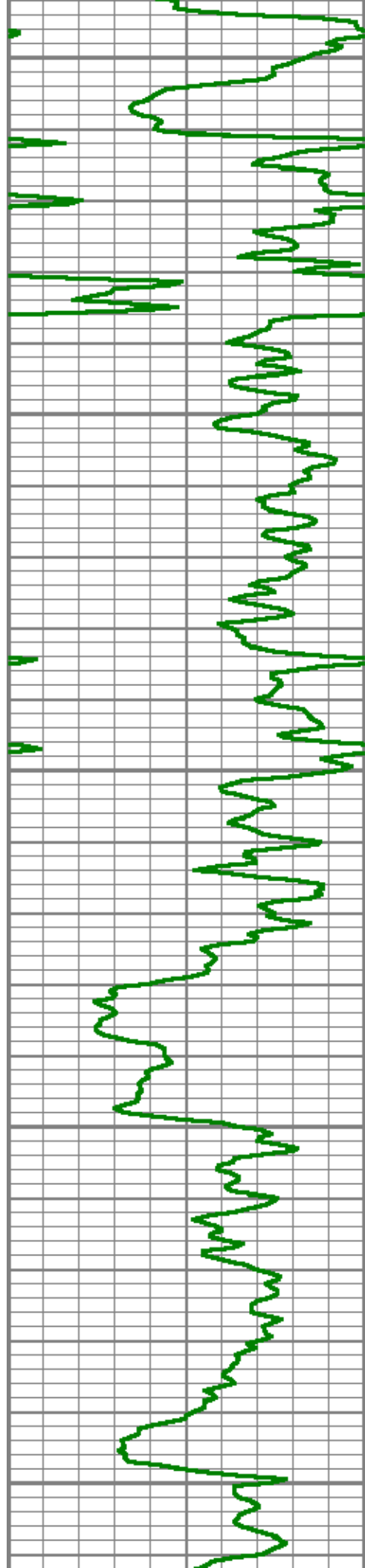




5600

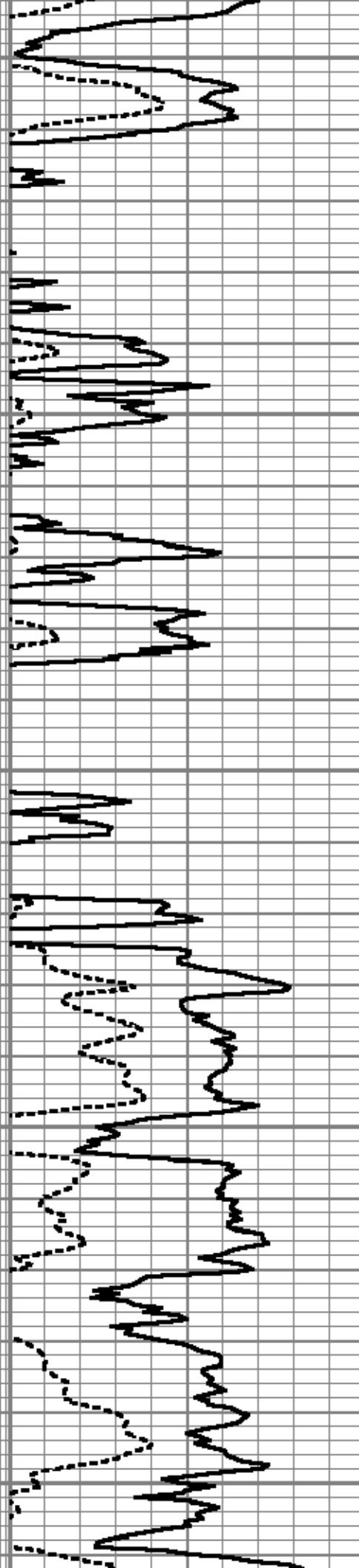
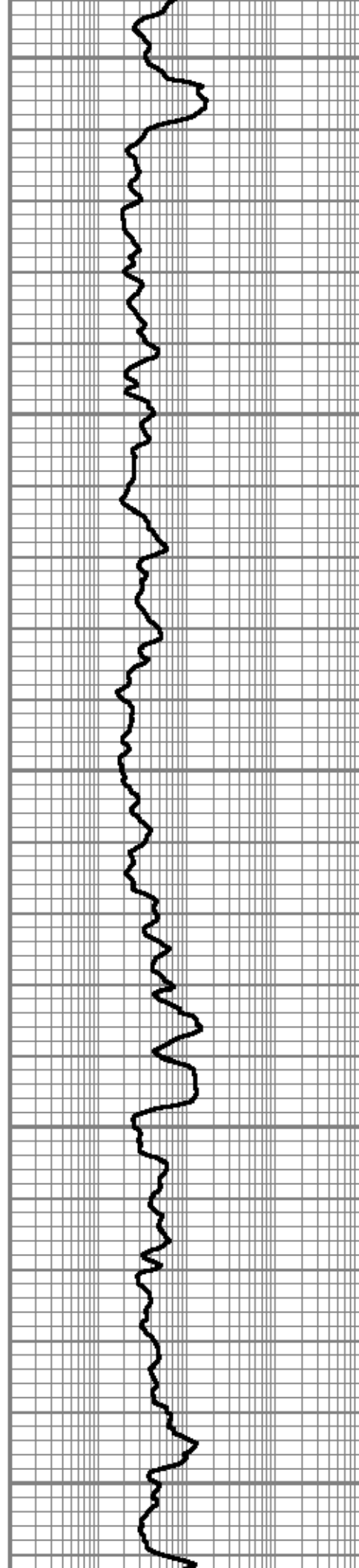
5700

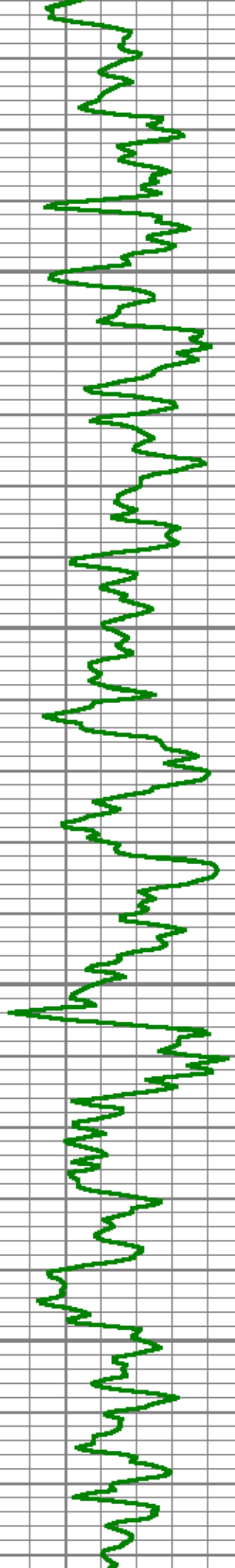




5800

5900





6000

6100

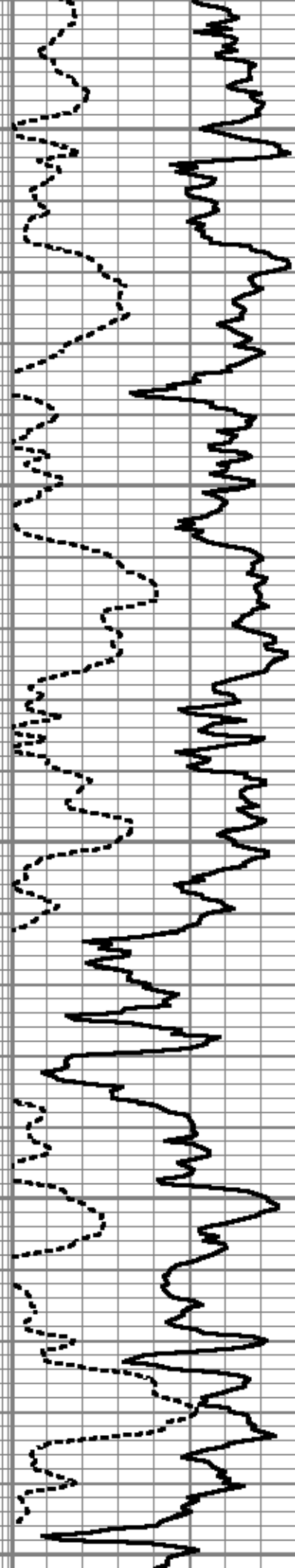


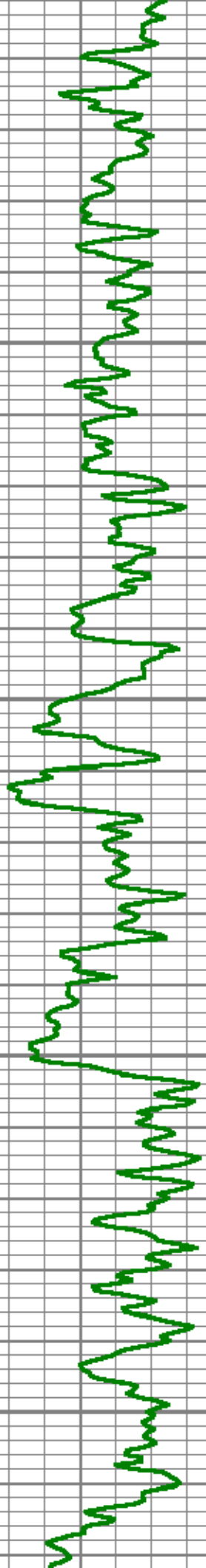


6200

6300

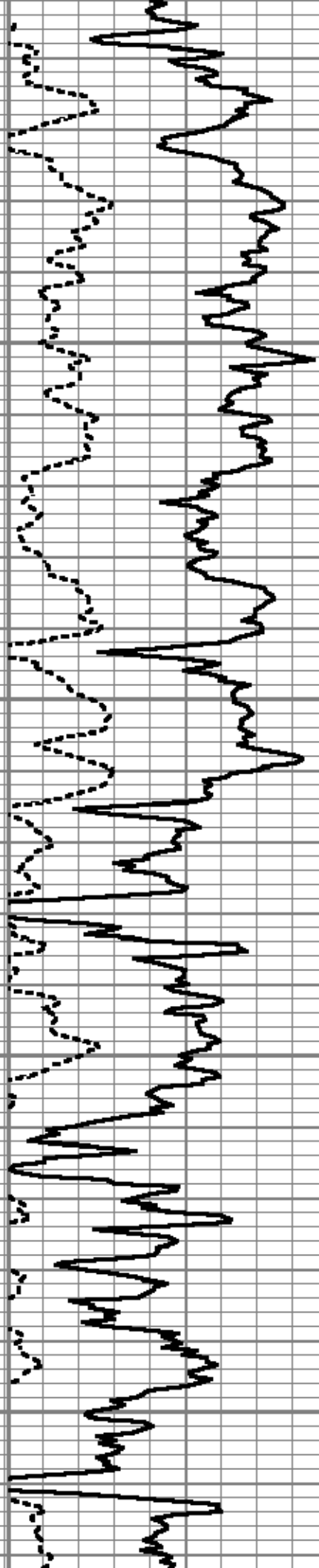
6400

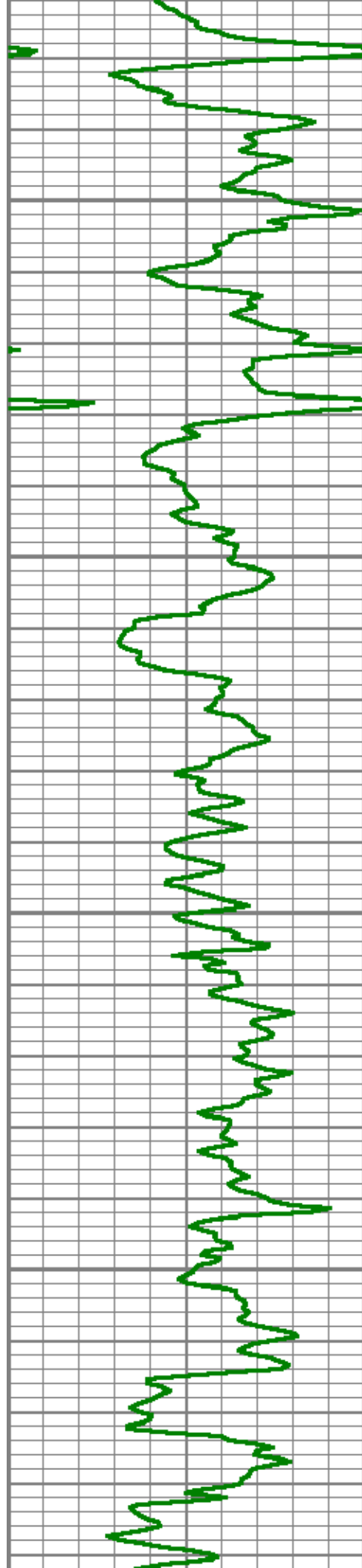




6500

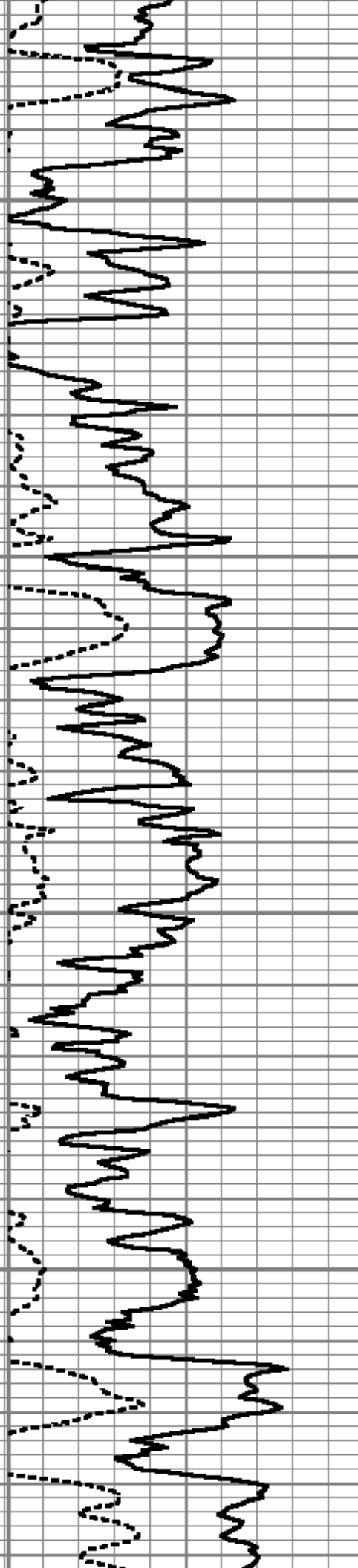
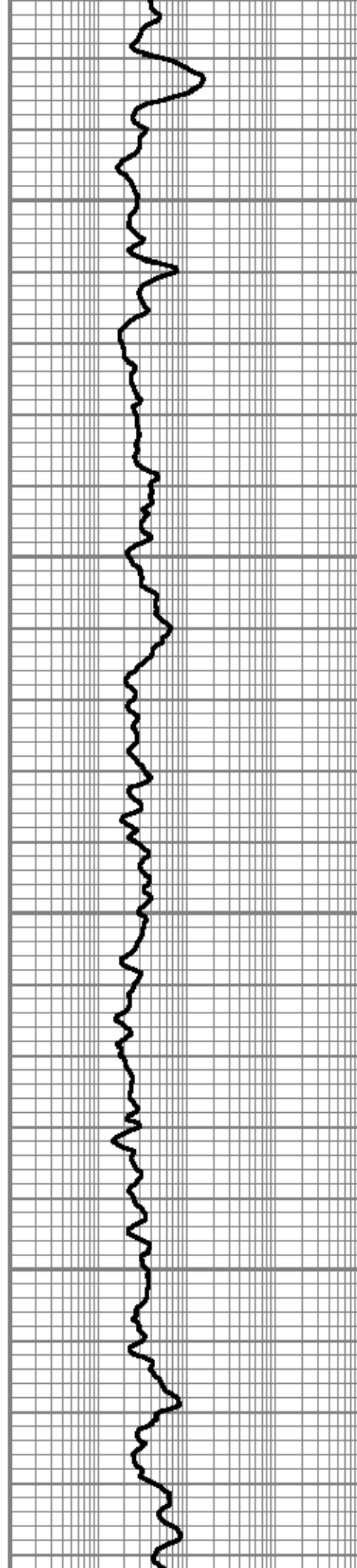
6600

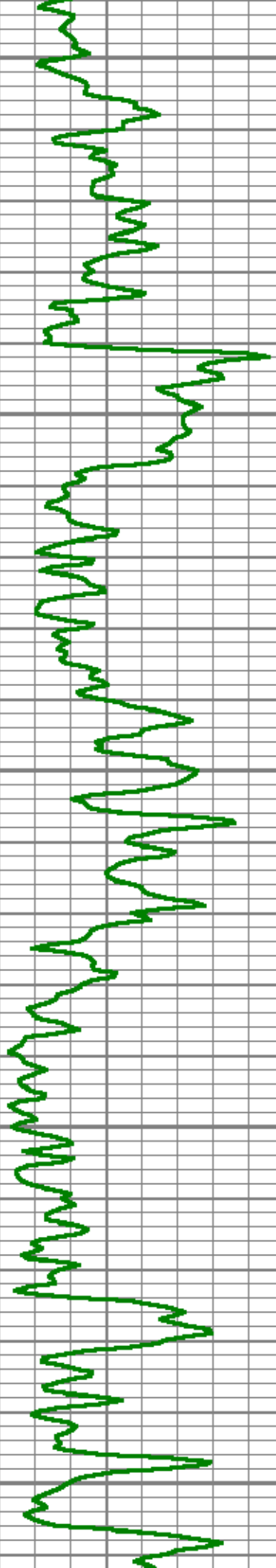




6700

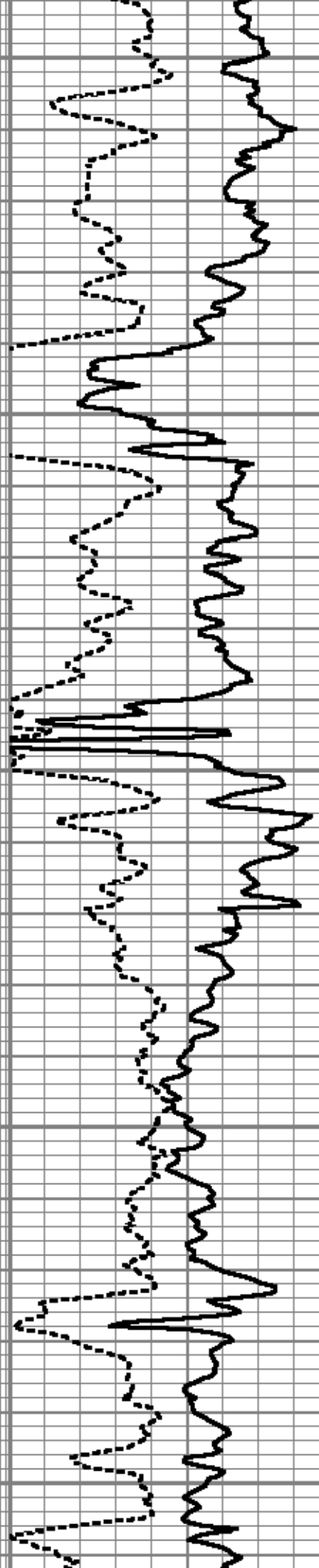
6800

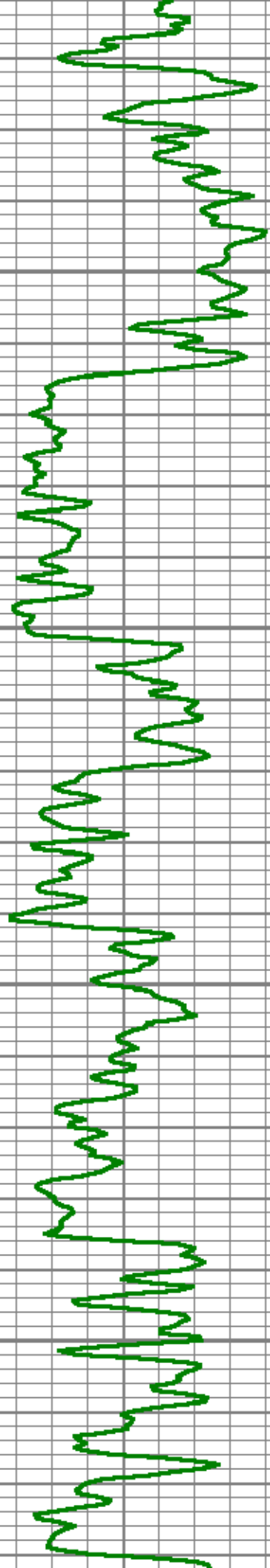




6900

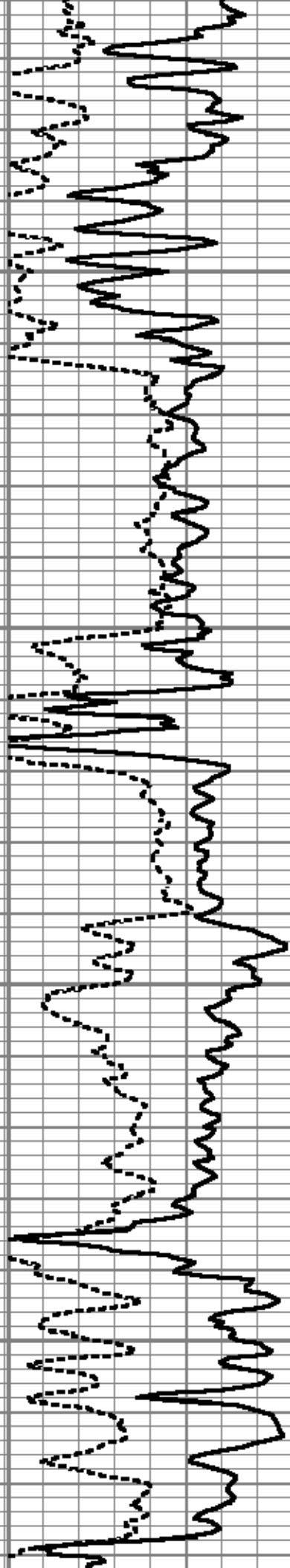
7000

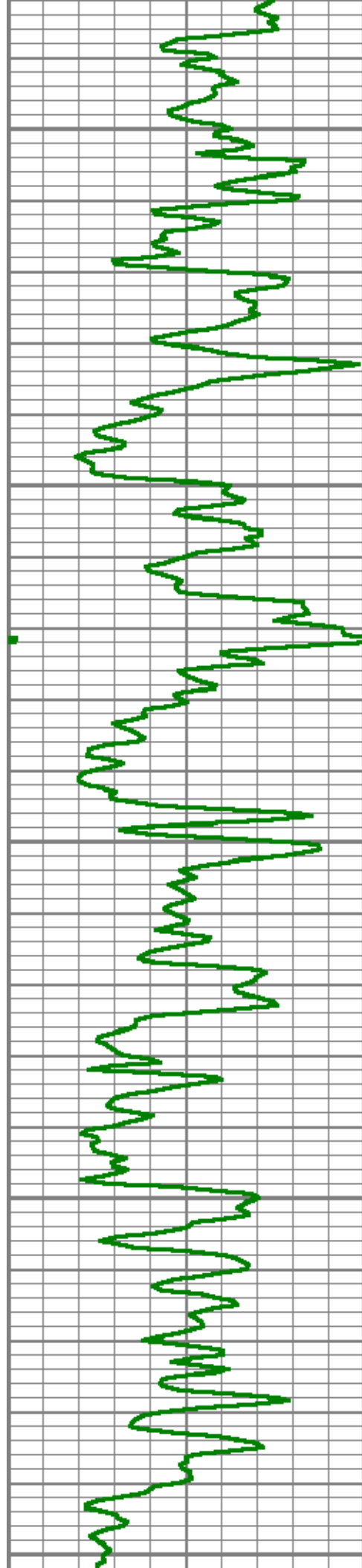




7100

7200

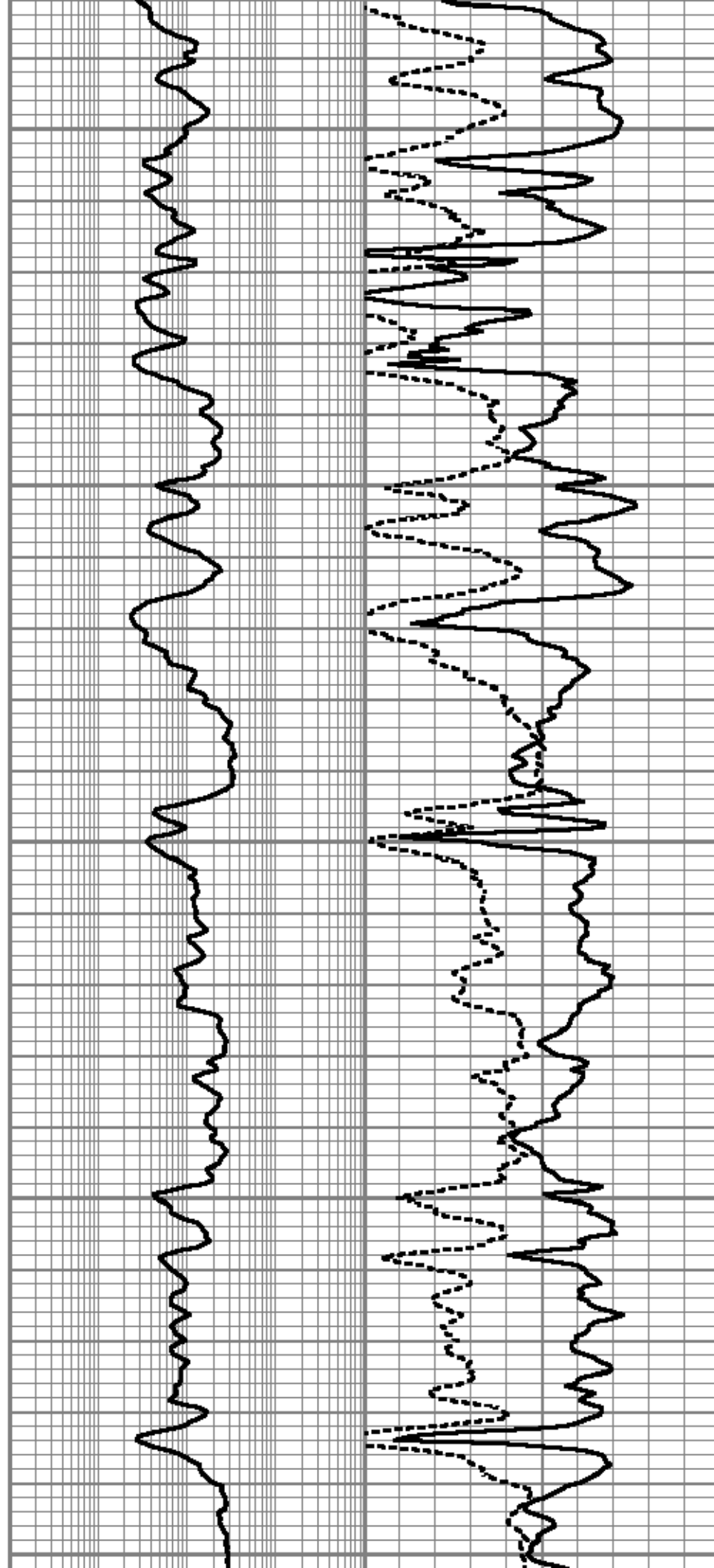


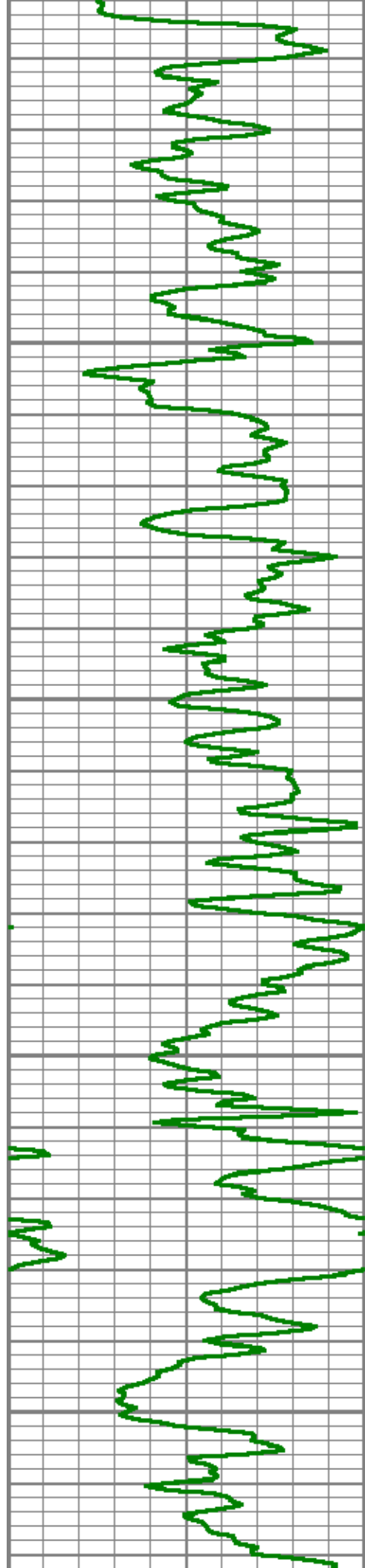


7300

7400

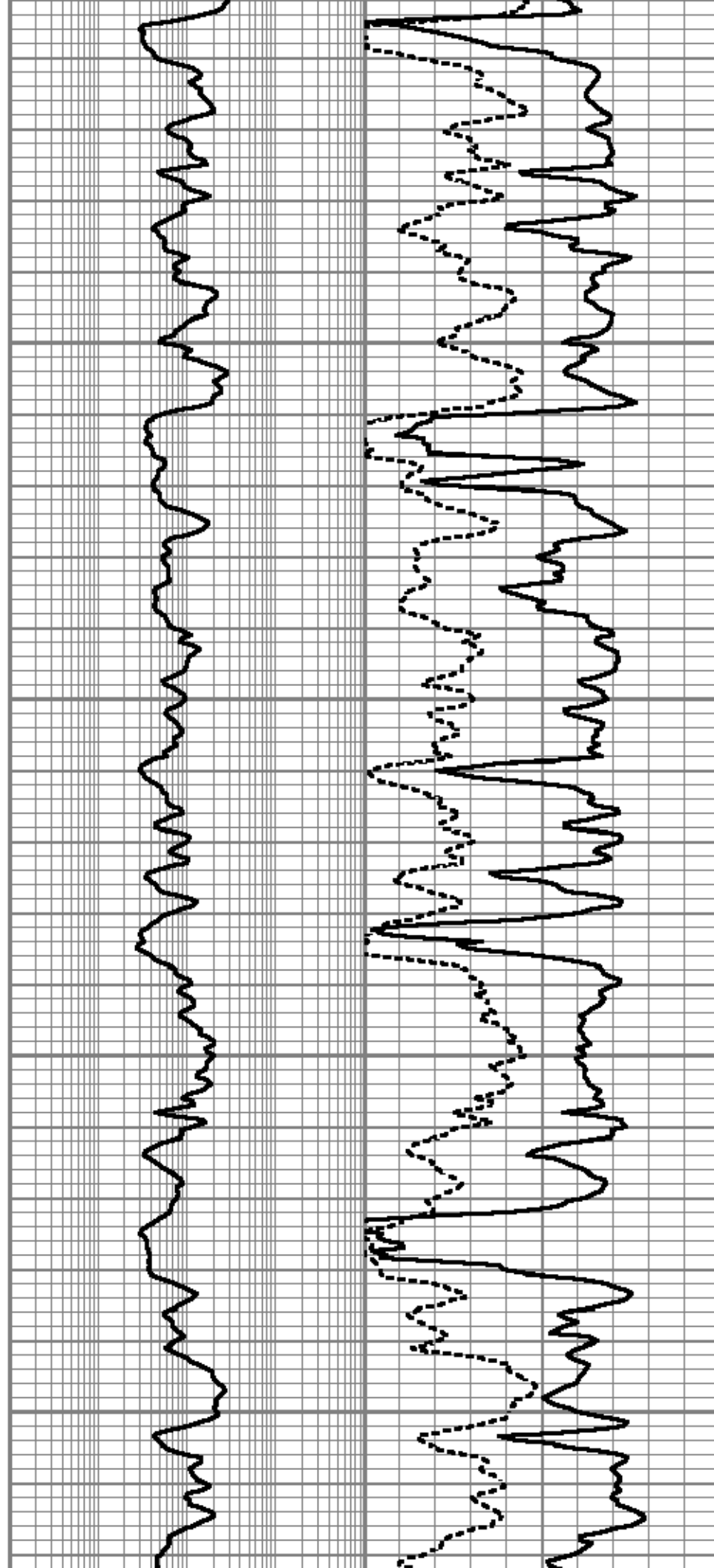
7500

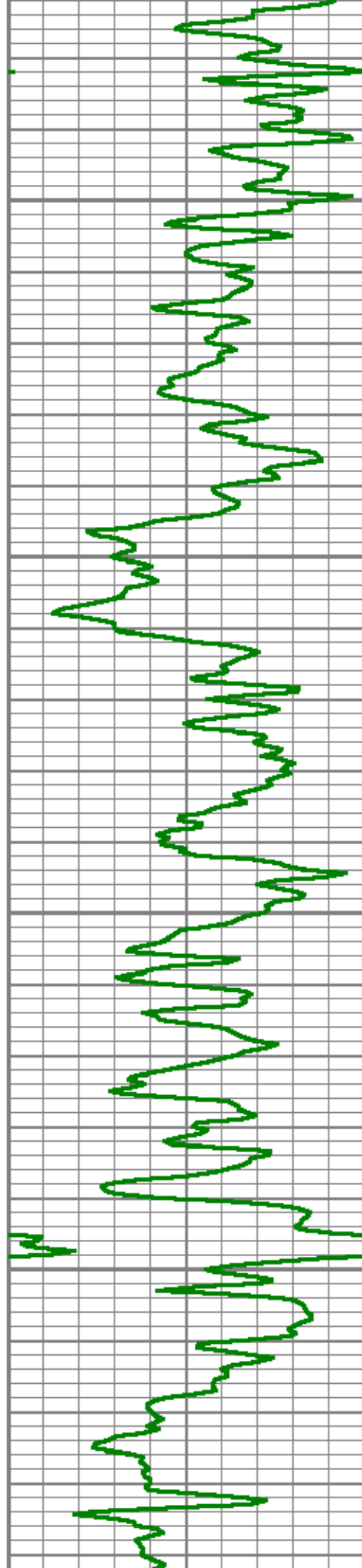




7600

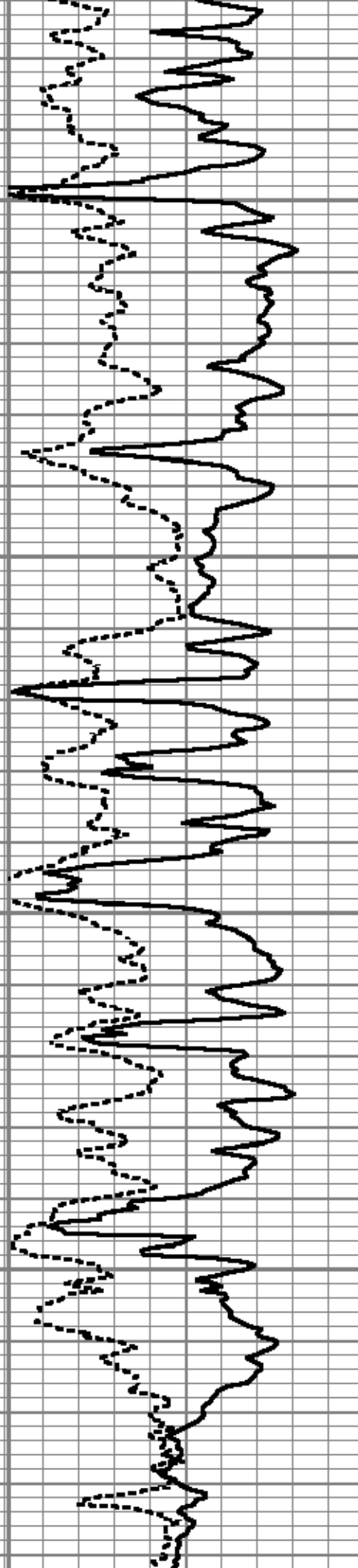
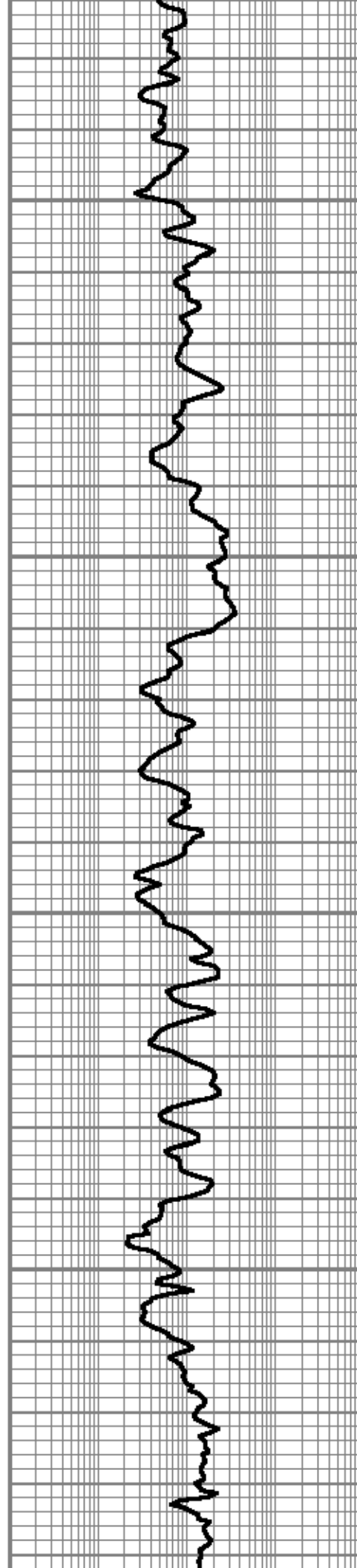
7700

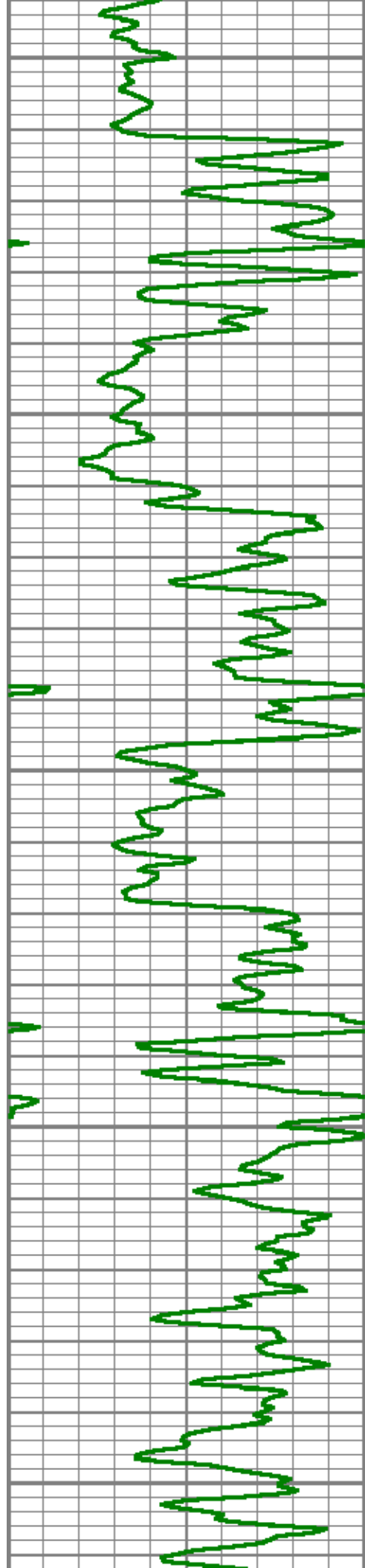




7800

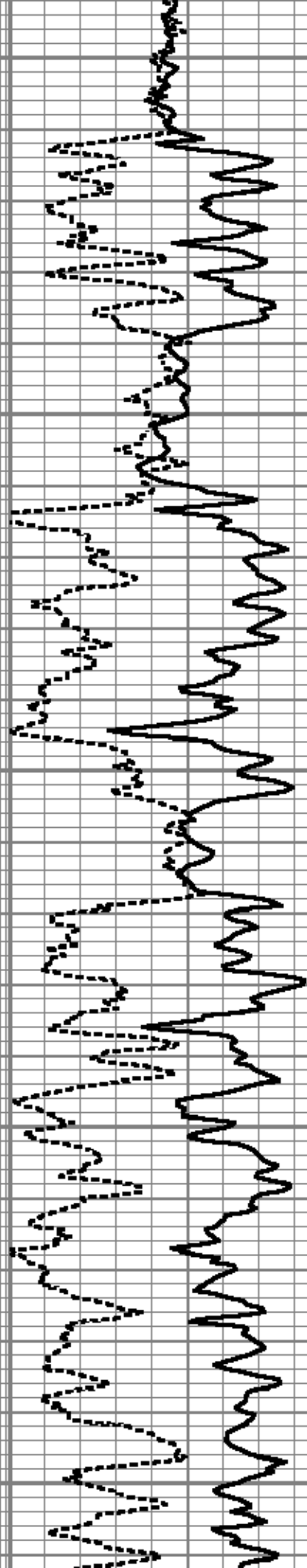
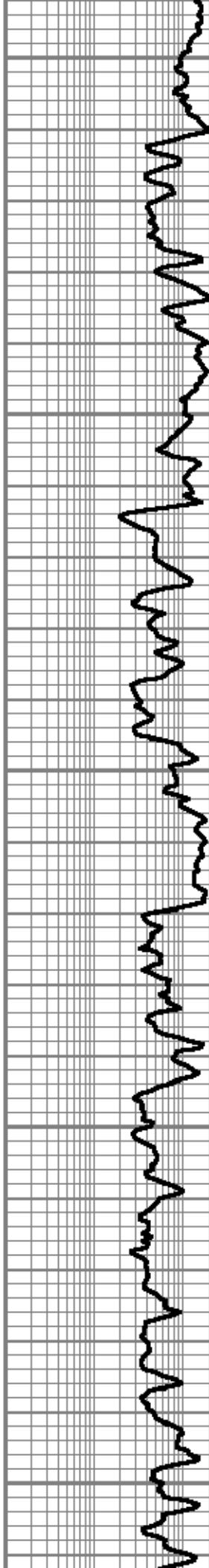
7900

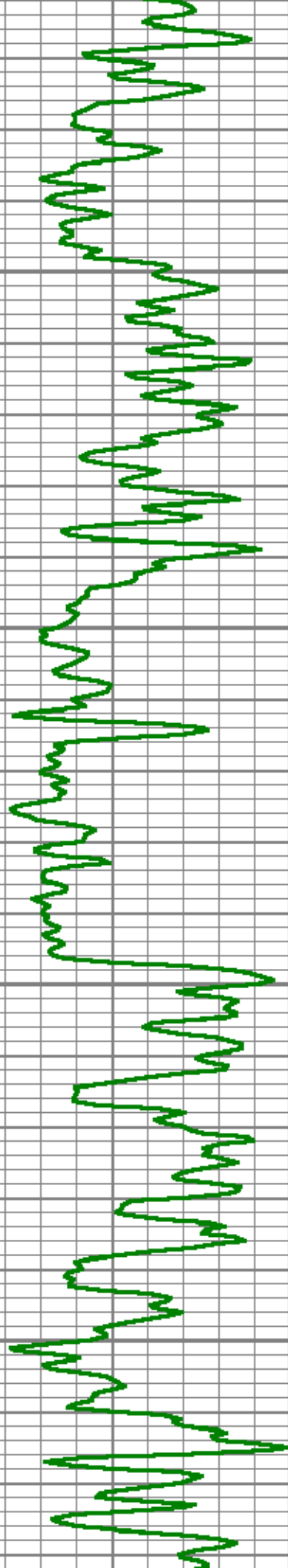




8000

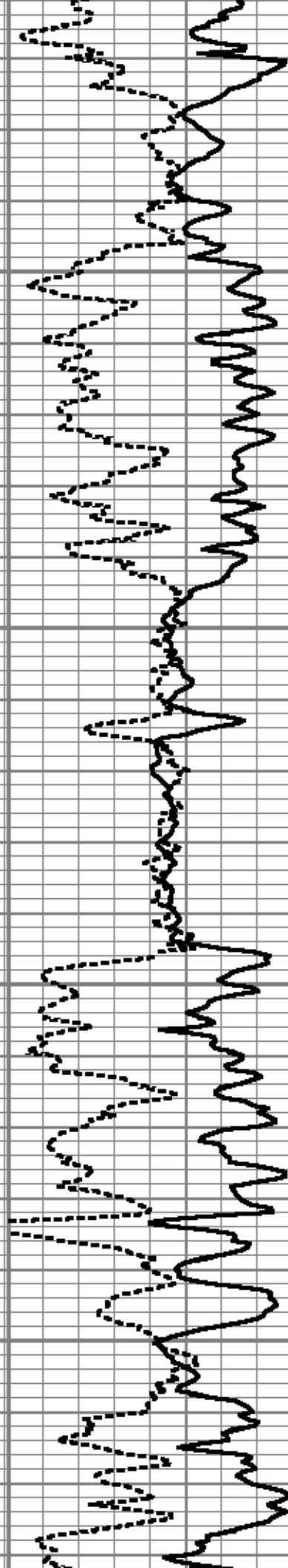
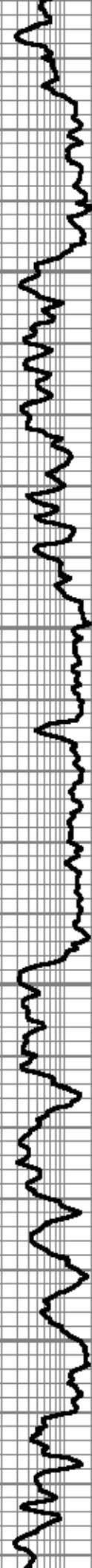
8100

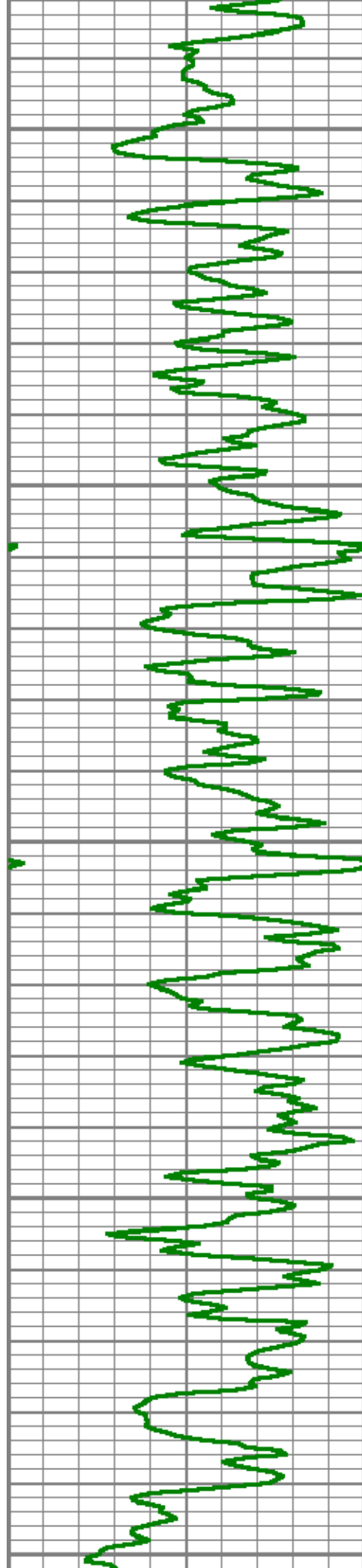




8200

8300

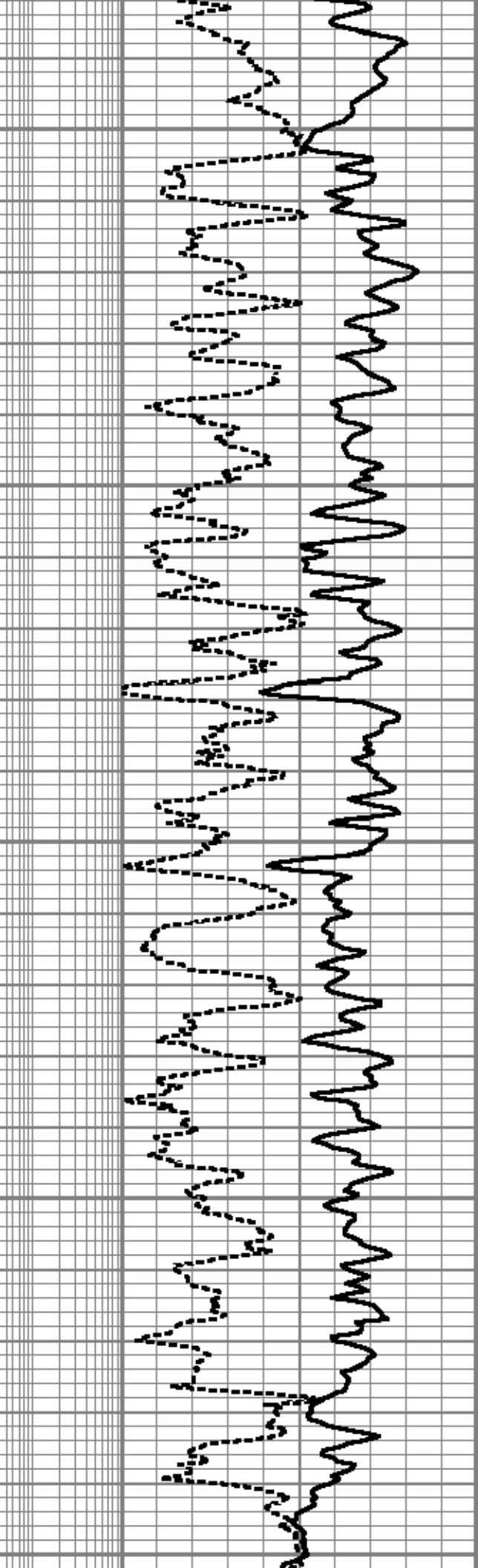
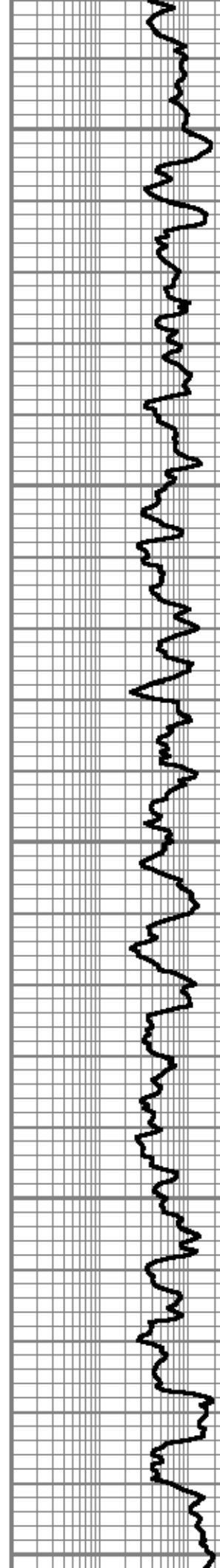


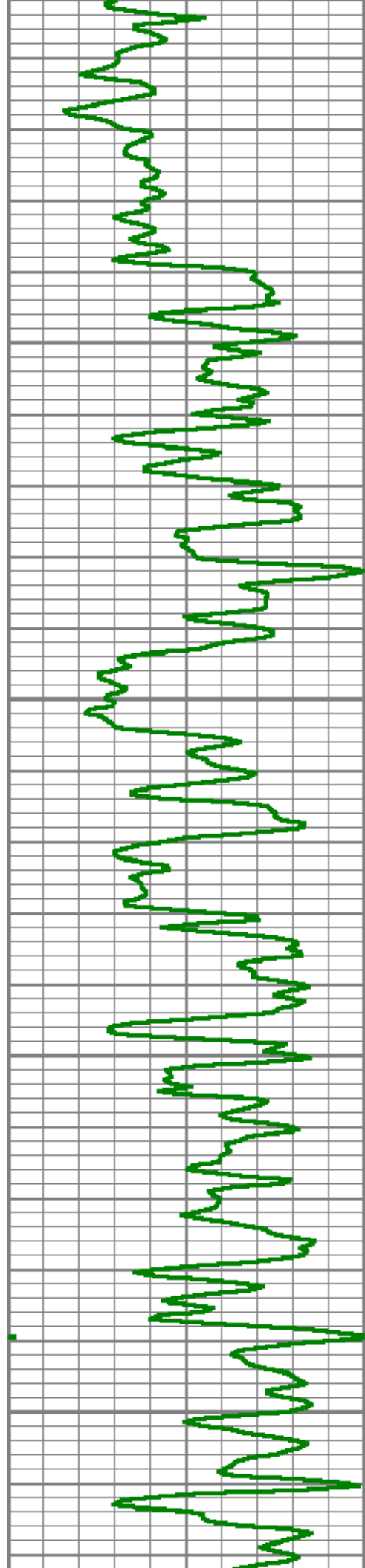


8400

8500

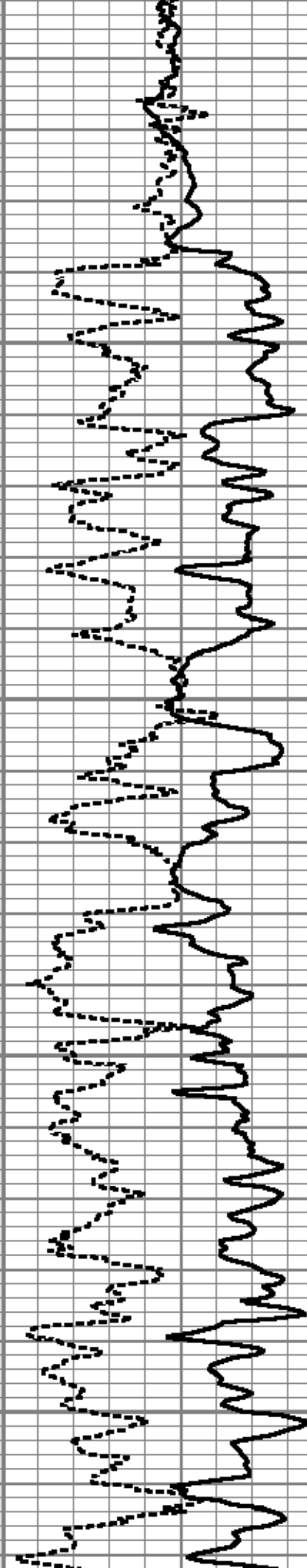
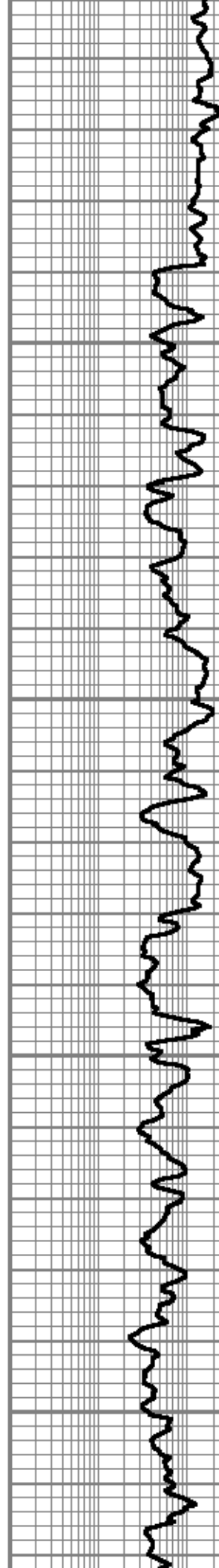
8600

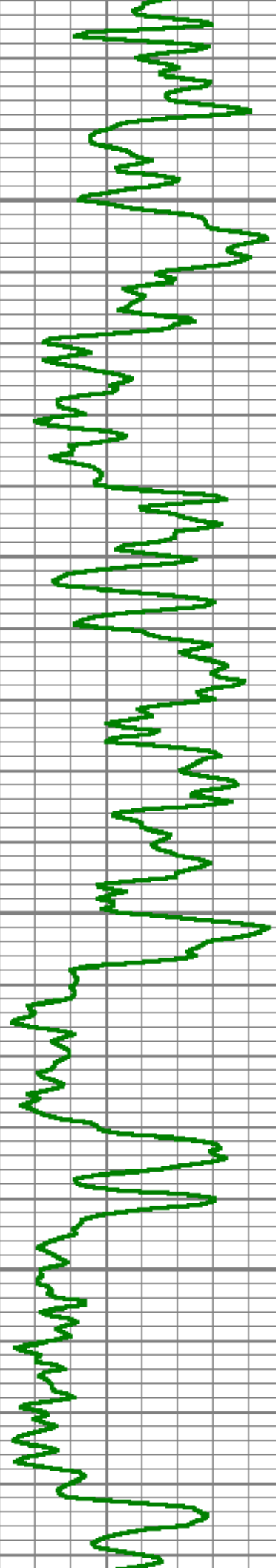




8700

8800

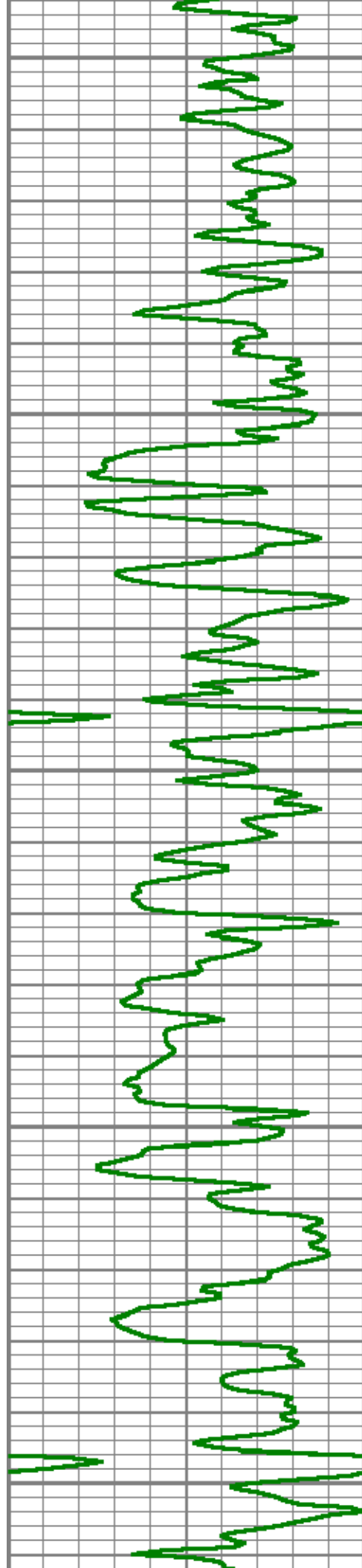




8900

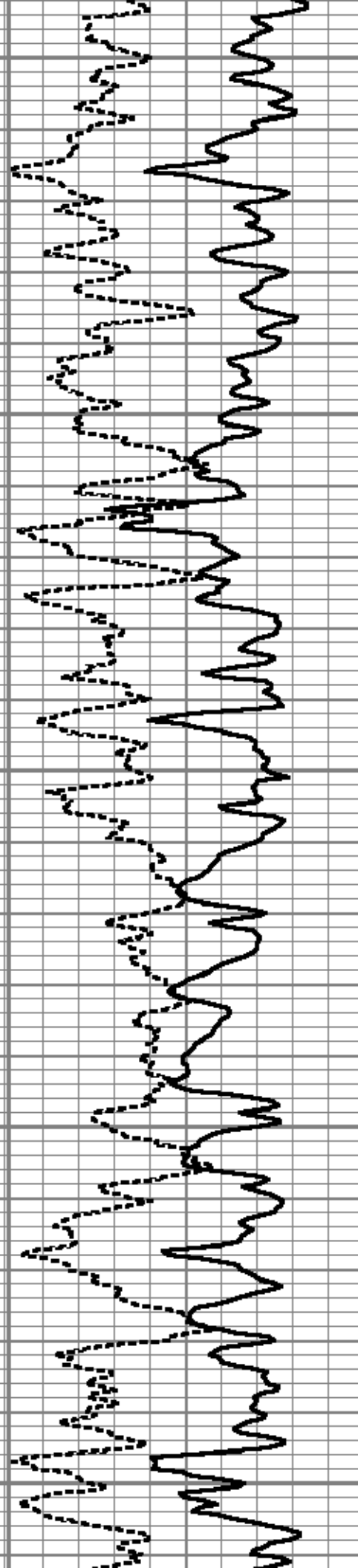
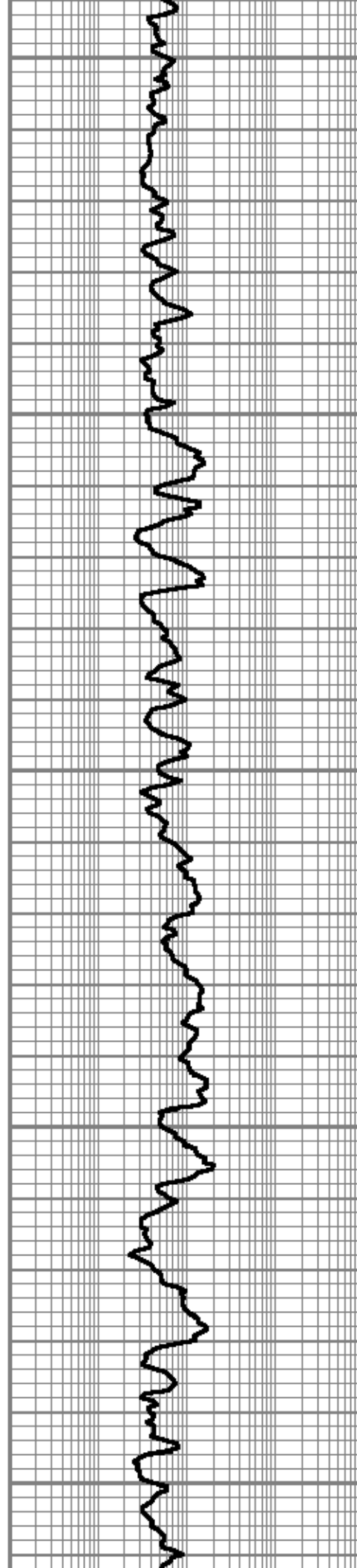
9000

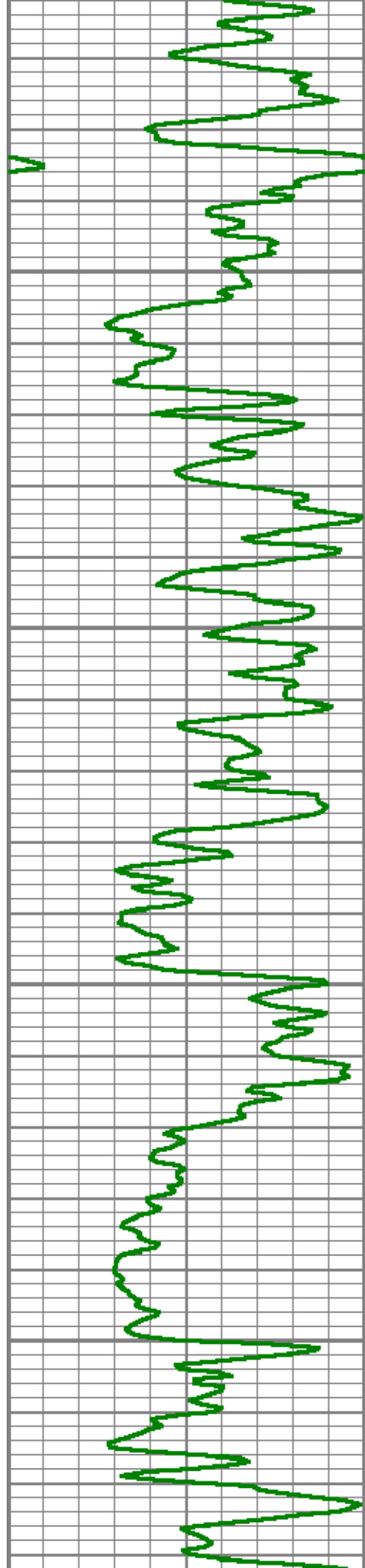




9100

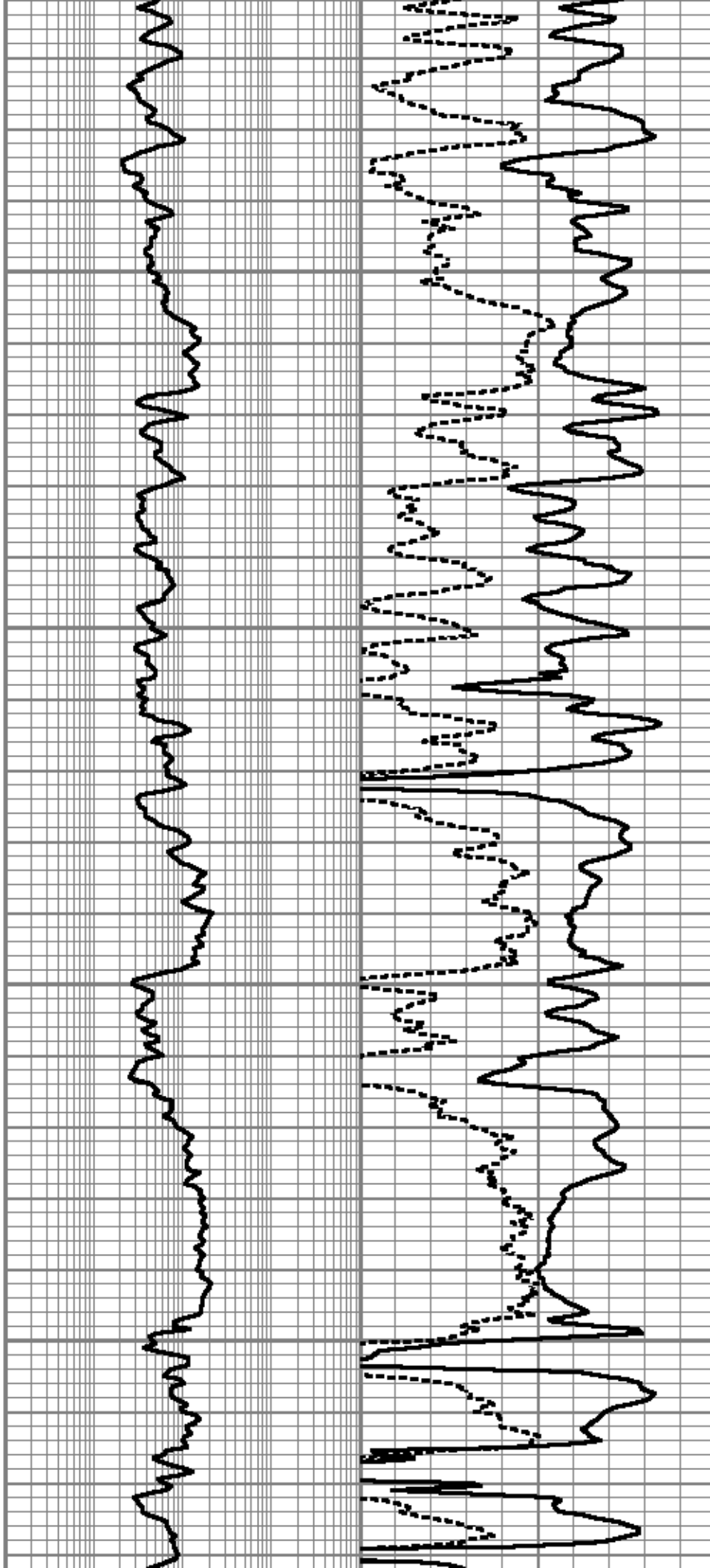
9200





9300

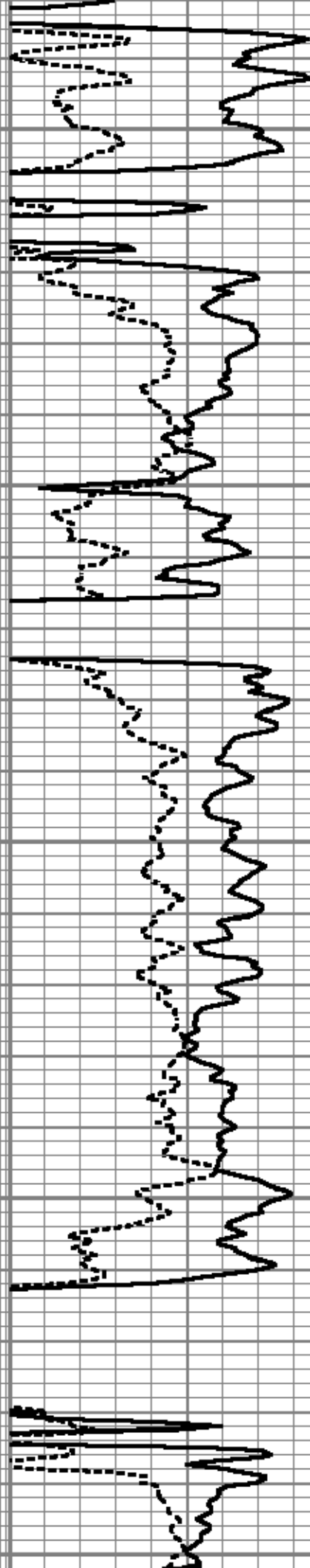
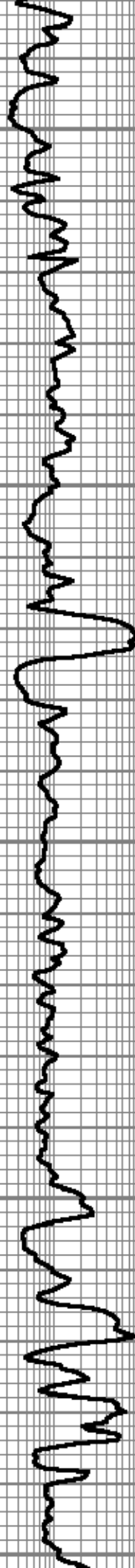
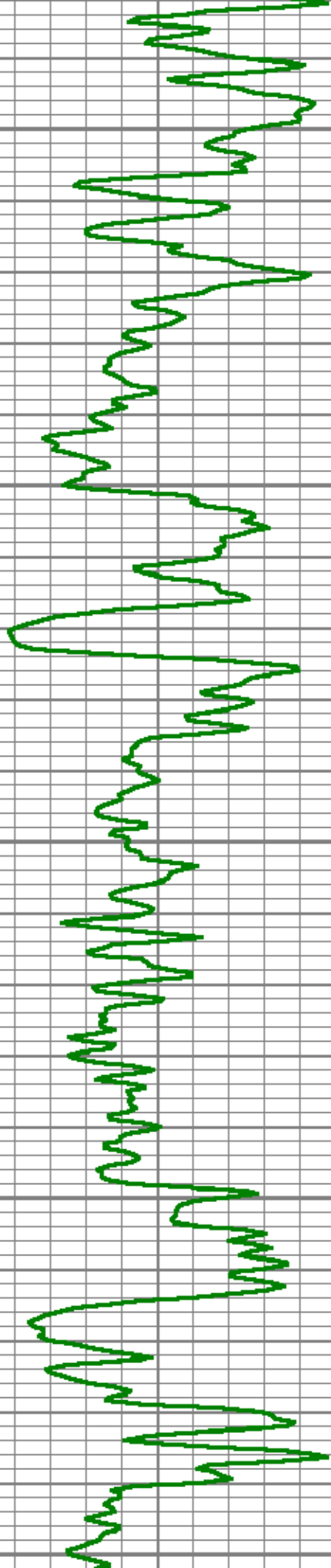
9400

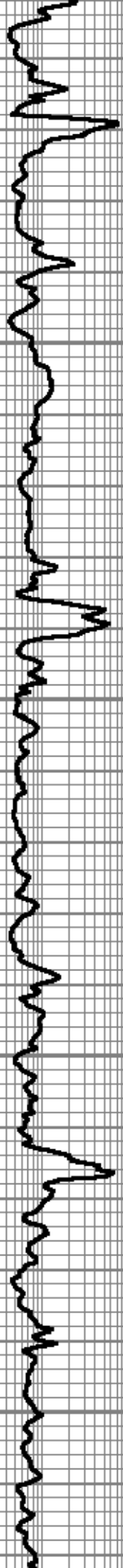
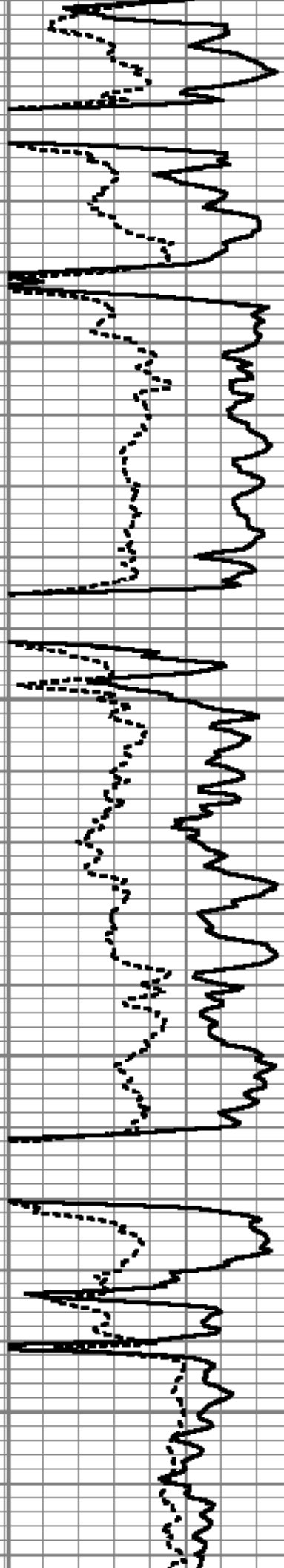


9500

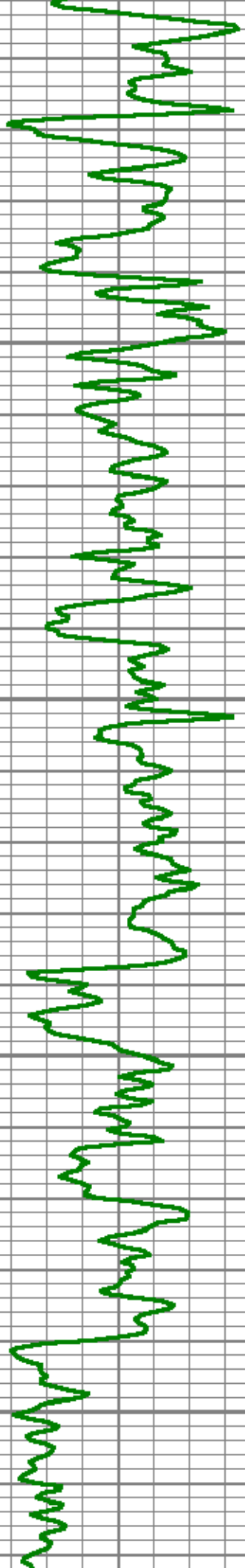
9600

9700

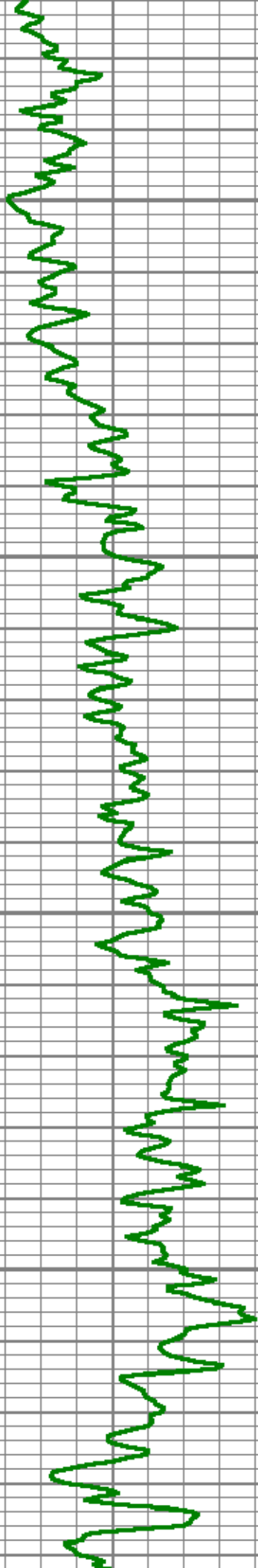




9800

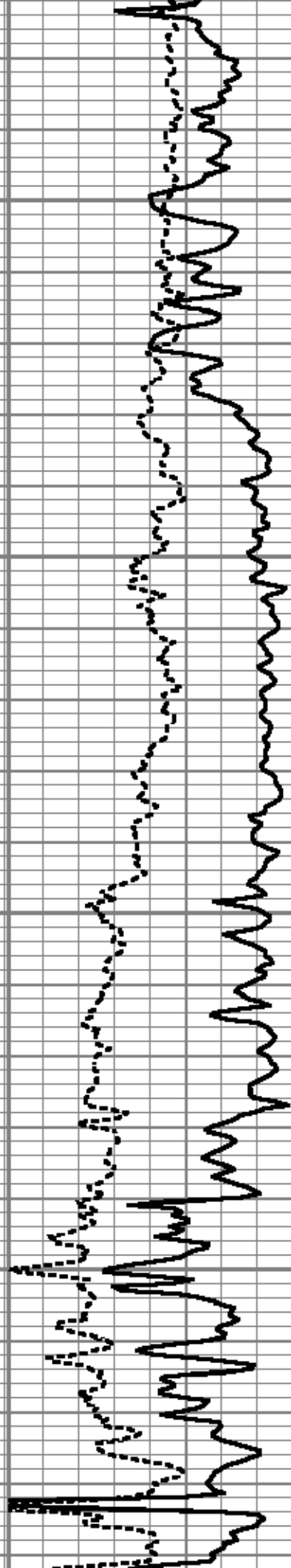
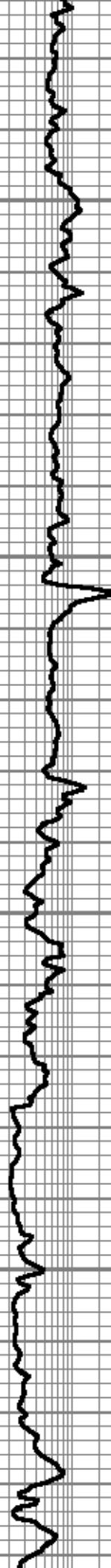


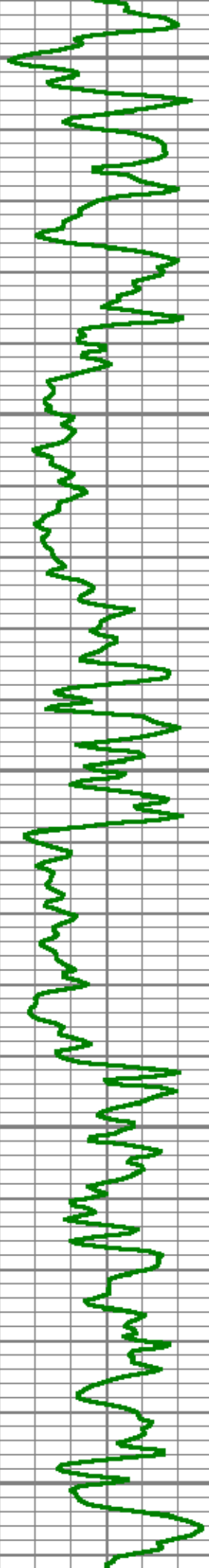
9900



10000

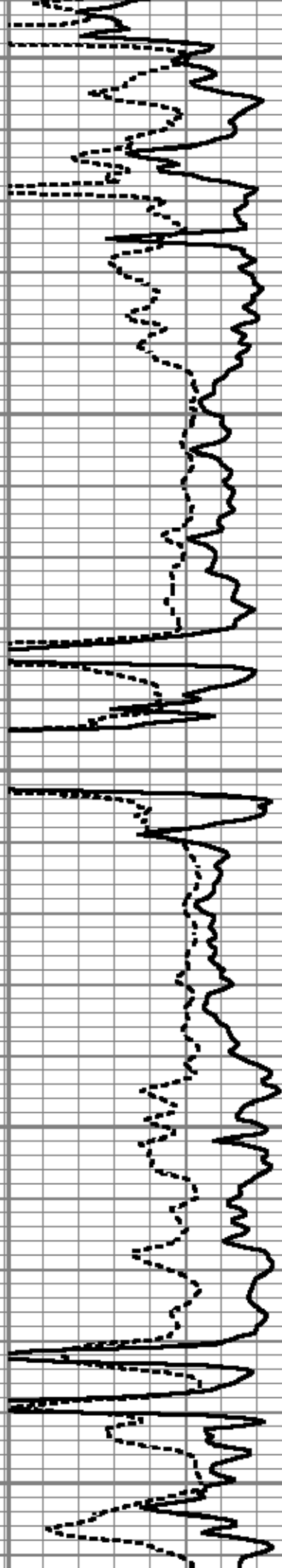
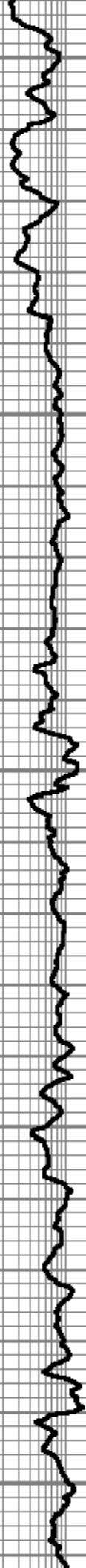
10100

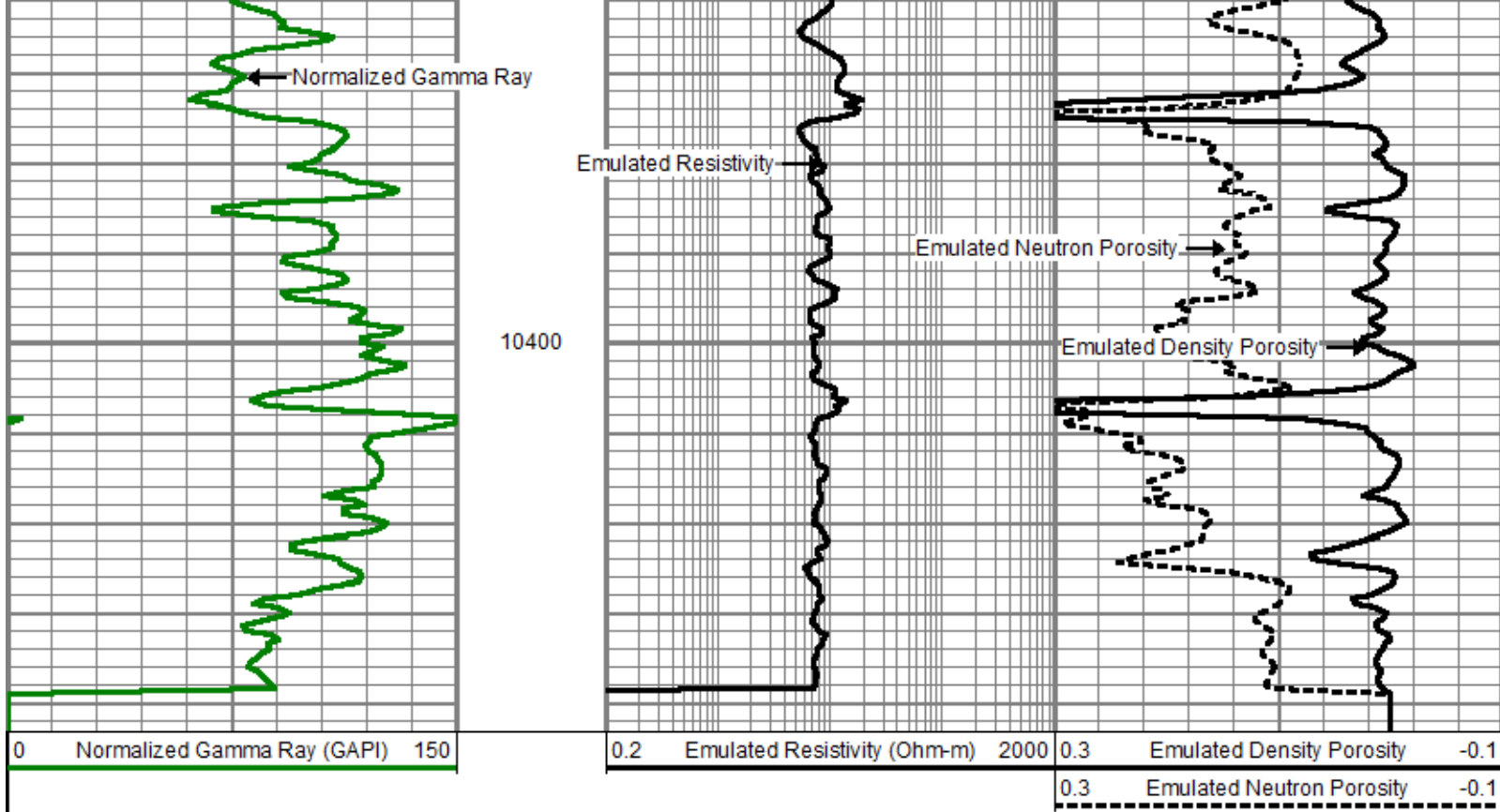




10200

10300





Company	Laramie Energy LLC
Well	CC Federal 0697-03-08W
Field	Grand Valley
County	Garfield
State	Colorado