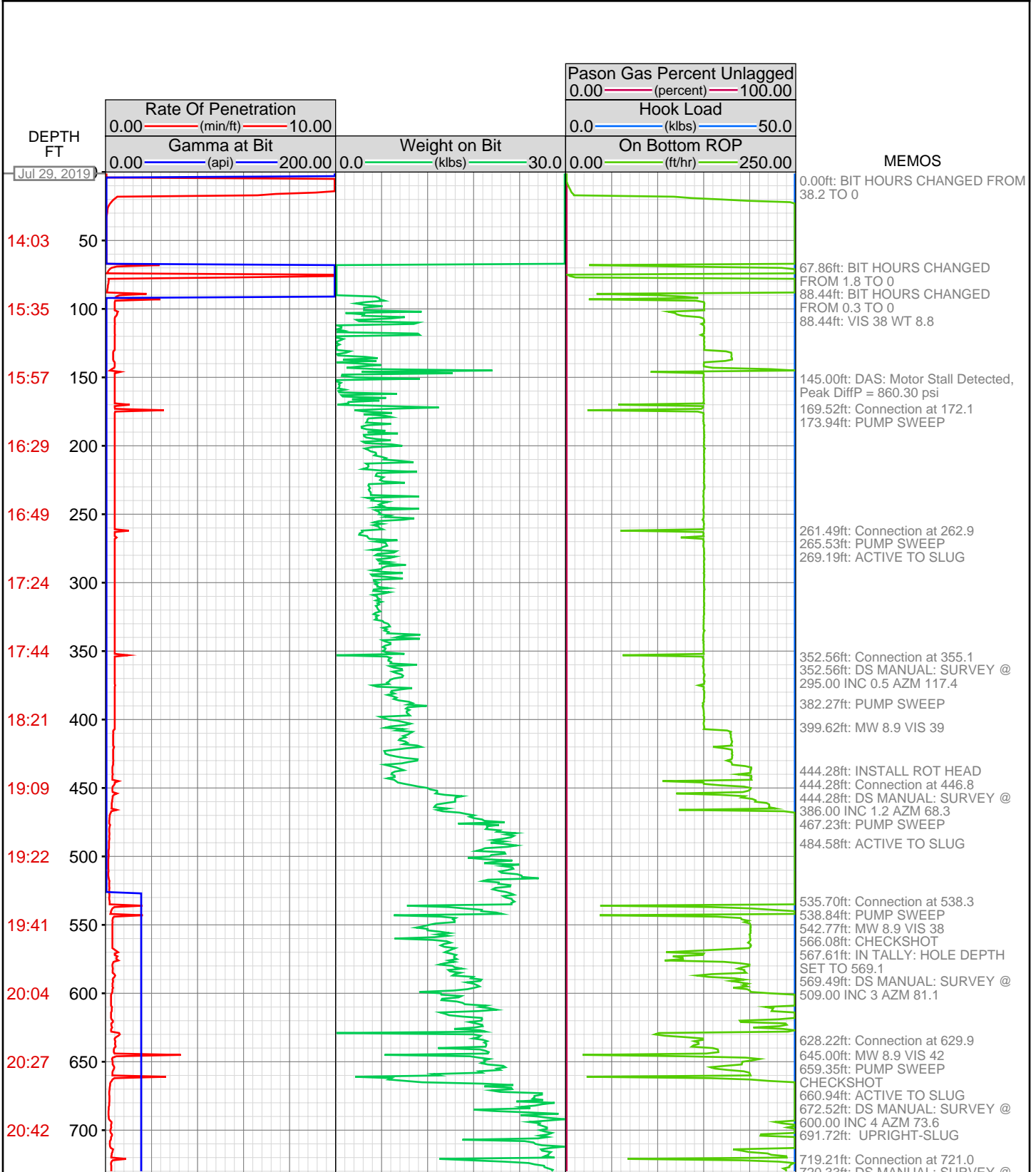


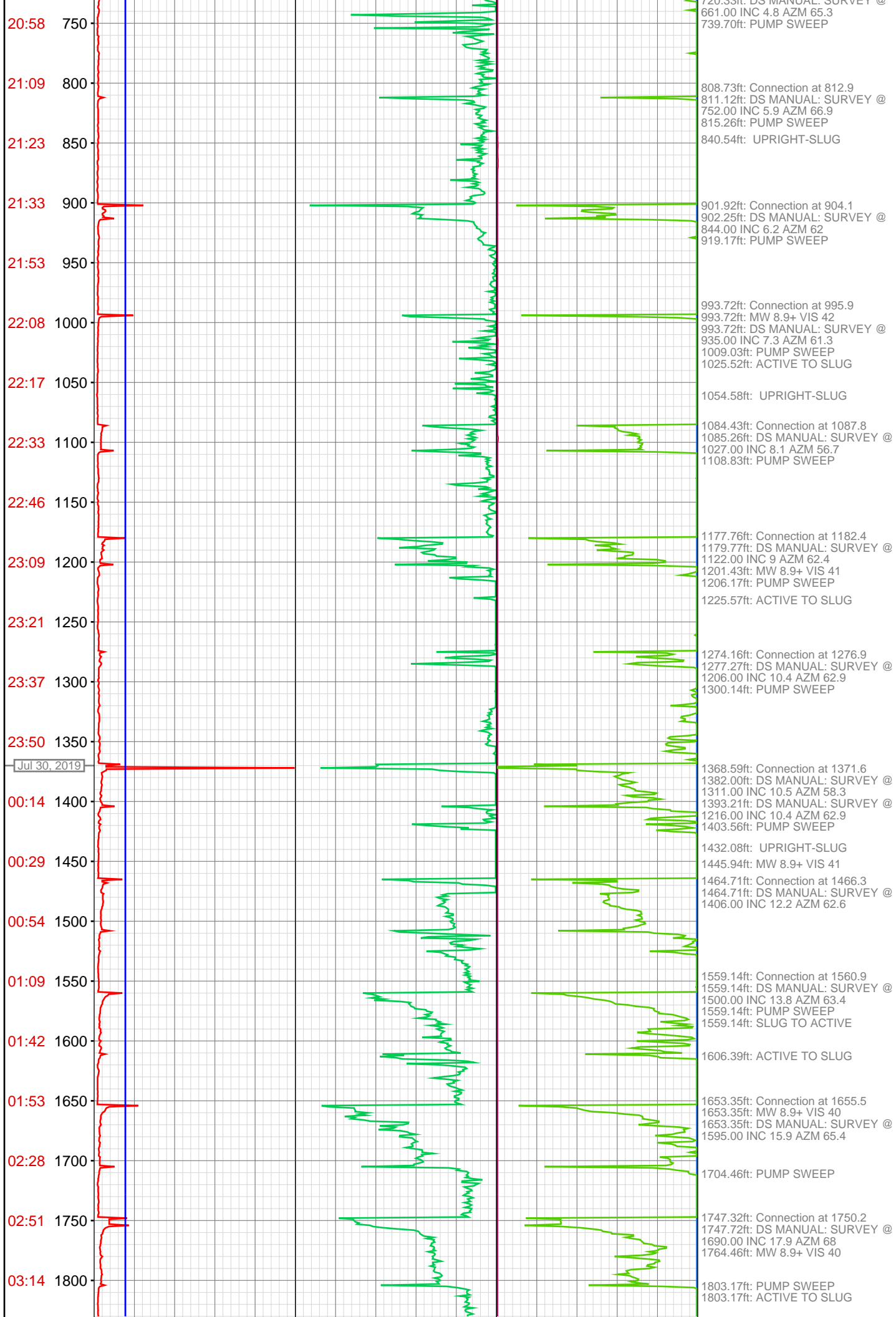
DataHub EDR Log

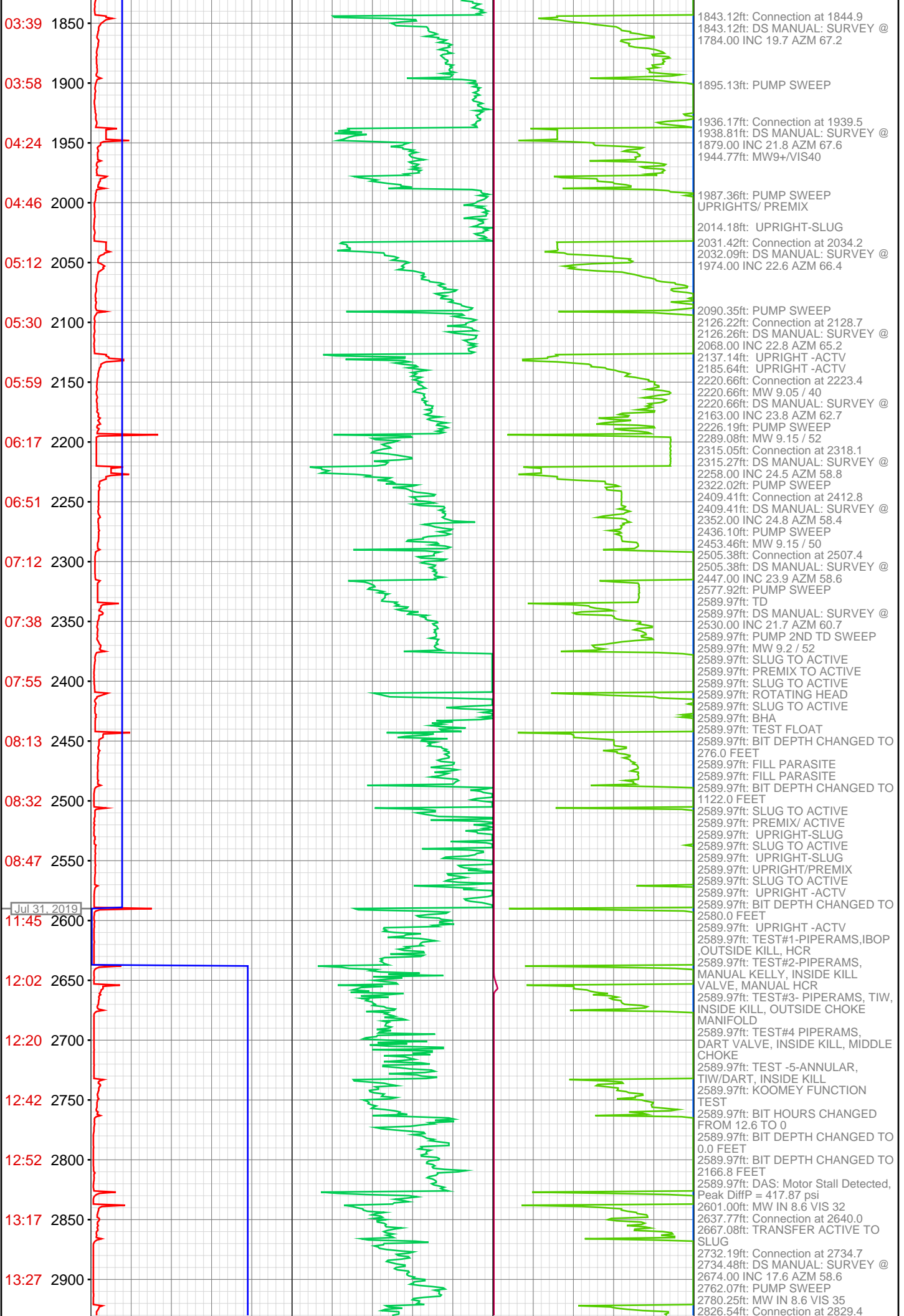
Fri Aug 02, 2019 14:16:44
Well Dossier 1564406935
Andy McCarthy

OPERATOR: Laramie Energy II, LLC
WELL: CASCADE CREEK FEDERAL 0697-03-06W
FIELD:
LOCATION: LOT 12 SECTION 4 T6S R97W 6TH P.M.
COUNTRY: USA
RIG: H&P 522

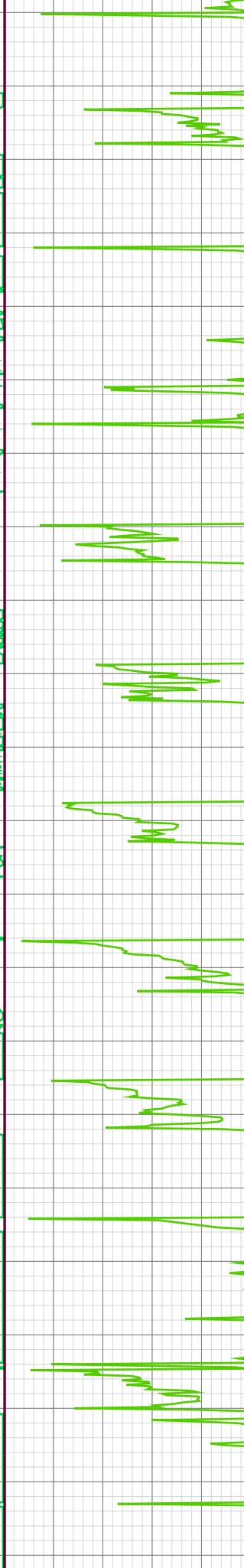
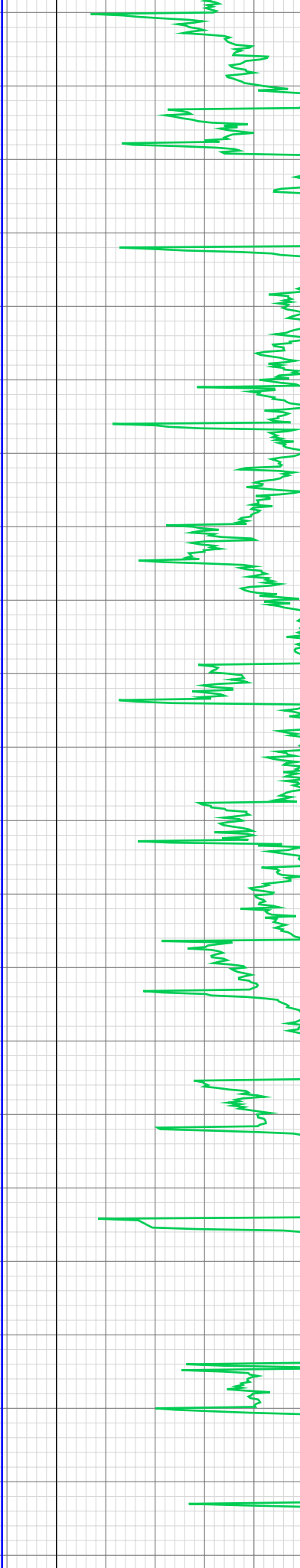
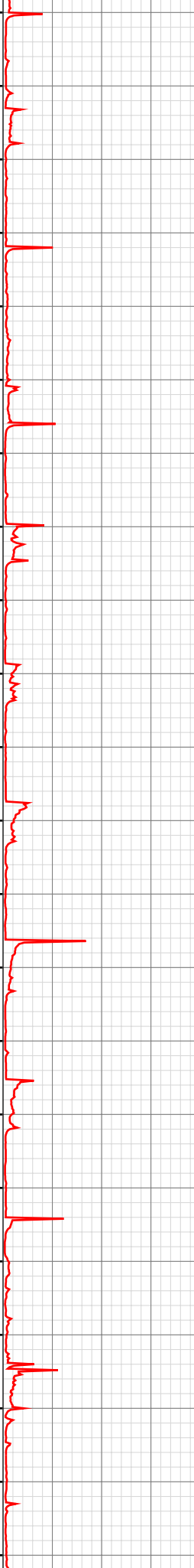
CONTRACTOR: Helmerich and Payne I.D.C.
UNIQUE WELL ID: 05-045-23931-00-00
SPUD DATE: Jul 29, 2019 14:15
RELEASE DATE:







13:48 2950
13:56 3000
14:19 3050
14:26 3100
14:37 3150
14:46 3200
15:07 3250
15:19 3300
15:37 3350
15:50 3400
16:03 3450
16:23 3500
16:36 3550
16:53 3600
17:04 3650
17:24 3700
17:34 3750
17:46 3800
17:54 3850
18:25 3900
18:33 3950
18:45 4000



2835.00ft: DS MANUAL: SURVEY @
2769.00 INC 18.6 AZM 59.2
2865.16ft: MW IN 8.65 VIS 38
2875.09ft: PUMP SWEEP
2921.01ft: Connection at 2924.1
2921.01ft: DS MANUAL: SURVEY @
2864.00 INC 20.3 AZM 62.6
2939.18ft: TRANSFER UPRIGHT TO
SLUG
3015.39ft: Connection at 3018.7
3015.39ft: DS MANUAL: SURVEY @
2958.00 INC 23 AZM 64.1
3023.03ft: MW IN 8.7 VIS 38
3050.09ft: PUMP SWEEP

3109.86ft: Connection at 3113.2
3113.48ft: DS MANUAL: SURVEY @
3052.00 INC 25.3 AZM 65.2

3204.29ft: Connection at 3208.0
3204.29ft: DS MANUAL: SURVEY @
3148.00 INC 24 AZM 65.5
3231.16ft: PUMP SWEEP

3278.40ft: MW IN 8.8 VIS 38
3298.79ft: Connection at 3302.9
3298.79ft: DS MANUAL: SURVEY @
3242.00 INC 24.4 AZM 62.9
3315.62ft: TRANSFER ACTIVE TO
SLUG

3393.24ft: Connection at 3397.7
3393.24ft: DS MANUAL: SURVEY @
3337.00 INC 24.5 AZM 62
3422.87ft: PUMP SWEEP

3487.47ft: Connection at 3492.4 MW
IN 8.85 VIS 39
3487.73ft: DS MANUAL: SURVEY @
3432.00 INC 23.1 AZM 63.6

3581.99ft: Connection at 3587.0
3581.99ft: DS MANUAL: SURVEY @
3527.00 INC 22.9 AZM 61.3
3621.72ft: PUMP SWEEP

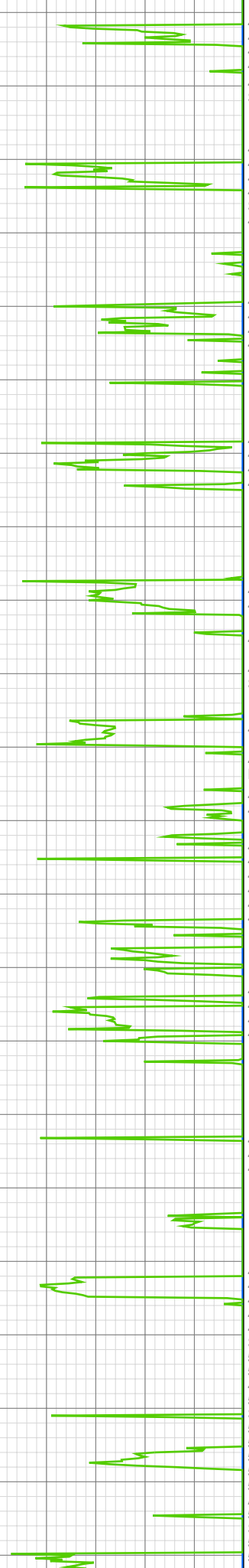
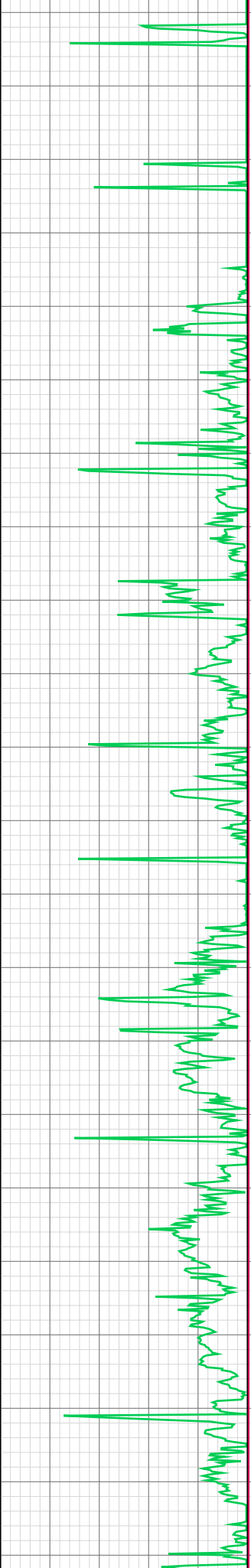
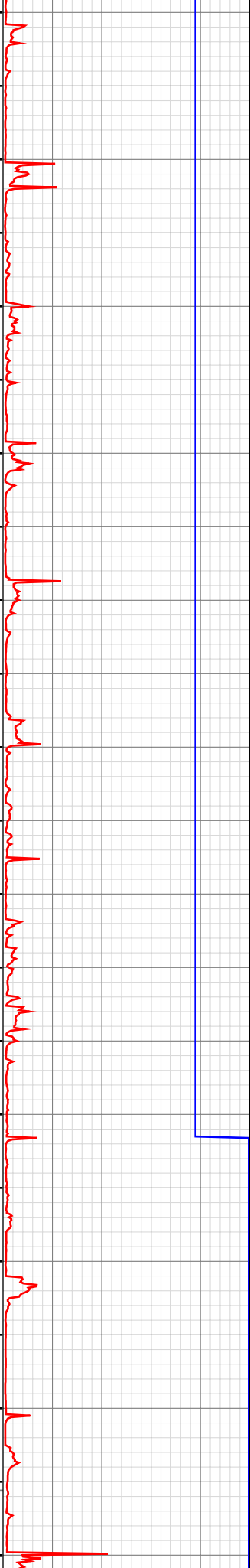
3676.18ft: Connection at 3681.7
3676.51ft: DS MANUAL: SURVEY @
3621.00 INC 23.5 AZM 62
3680.58ft: TRANSFER ACTIVE TO
SLUG
3708.20ft: MW IN 8.9 VIS 38

3770.93ft: Connection at 3776.5
3770.93ft: DS MANUAL: SURVEY @
3716.00 INC 25.4 AZM 63.2
3804.13ft: PUMP SWEEP

3869.69ft: Connection at 3871.0
3869.69ft: DS MANUAL: SURVEY @
3811.00 INC 23.2 AZM 62.6

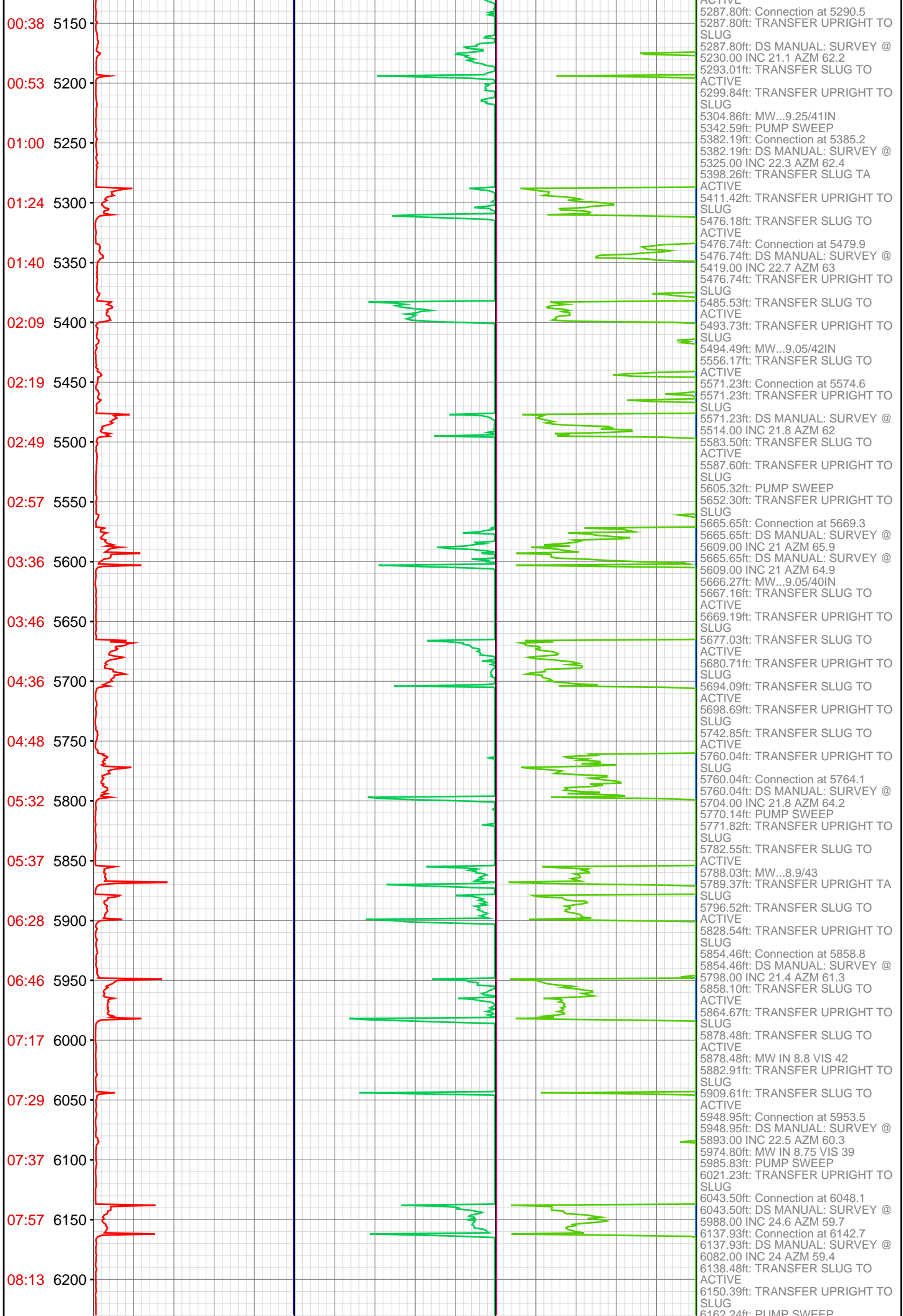
3964.11ft: Connection at 3965.7
3964.11ft: DS MANUAL: SURVEY @
3905.00 INC 24.9 AZM 62.9
3996.13ft: MW...9.15/42IN

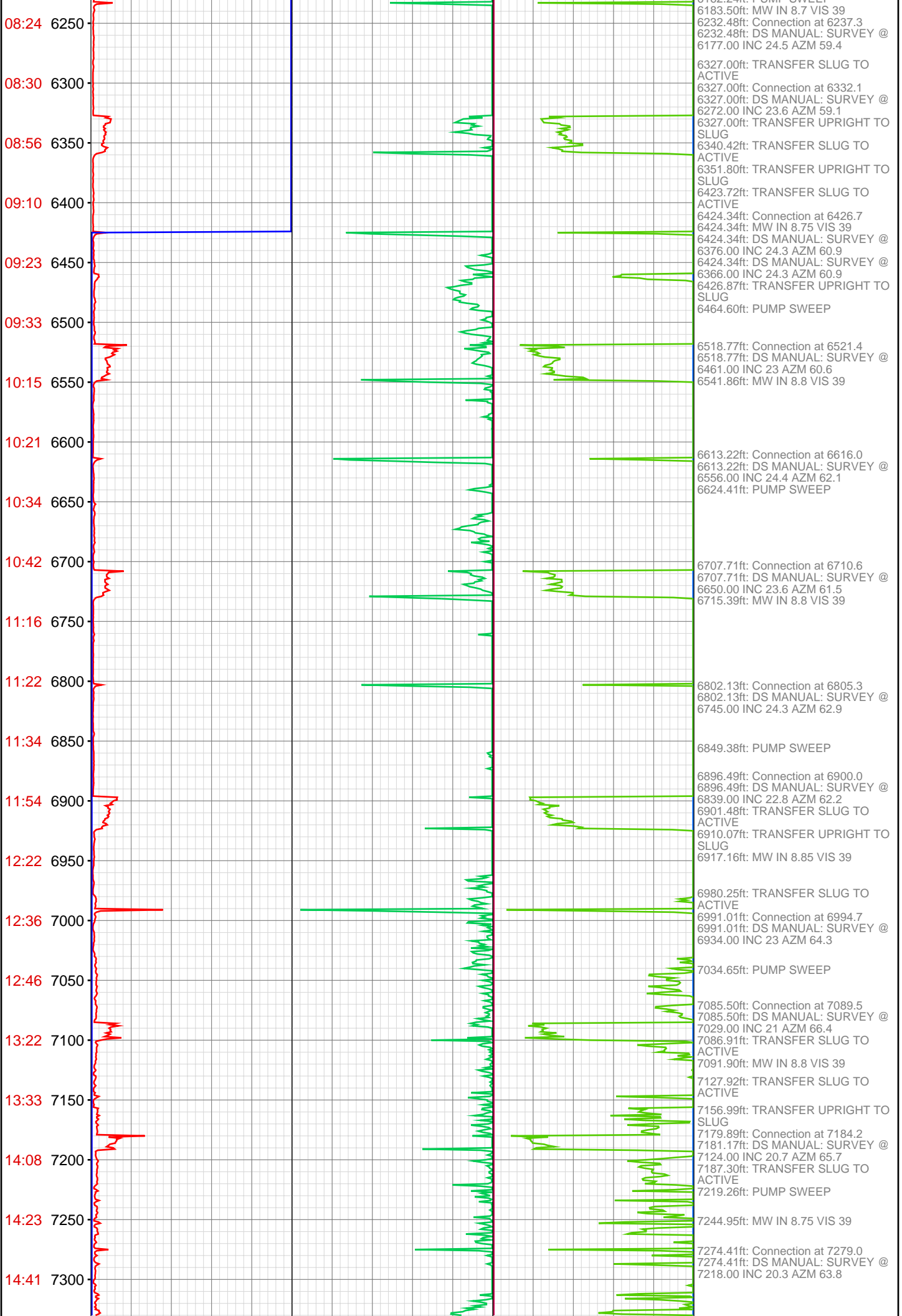
18:52 4050
19:10 4100
19:15 4150
19:38 4200
19:52 4250
20:09 4300
20:24 4350
20:40 4400
20:56 4450
21:08 4500
21:30 4550
21:40 4600
21:53 4650
22:07 4700
22:38 4750
22:47 4800
22:59 4850
23:08 4900
23:36 4950
23:41 5000
23:50 5050
00:14 5100

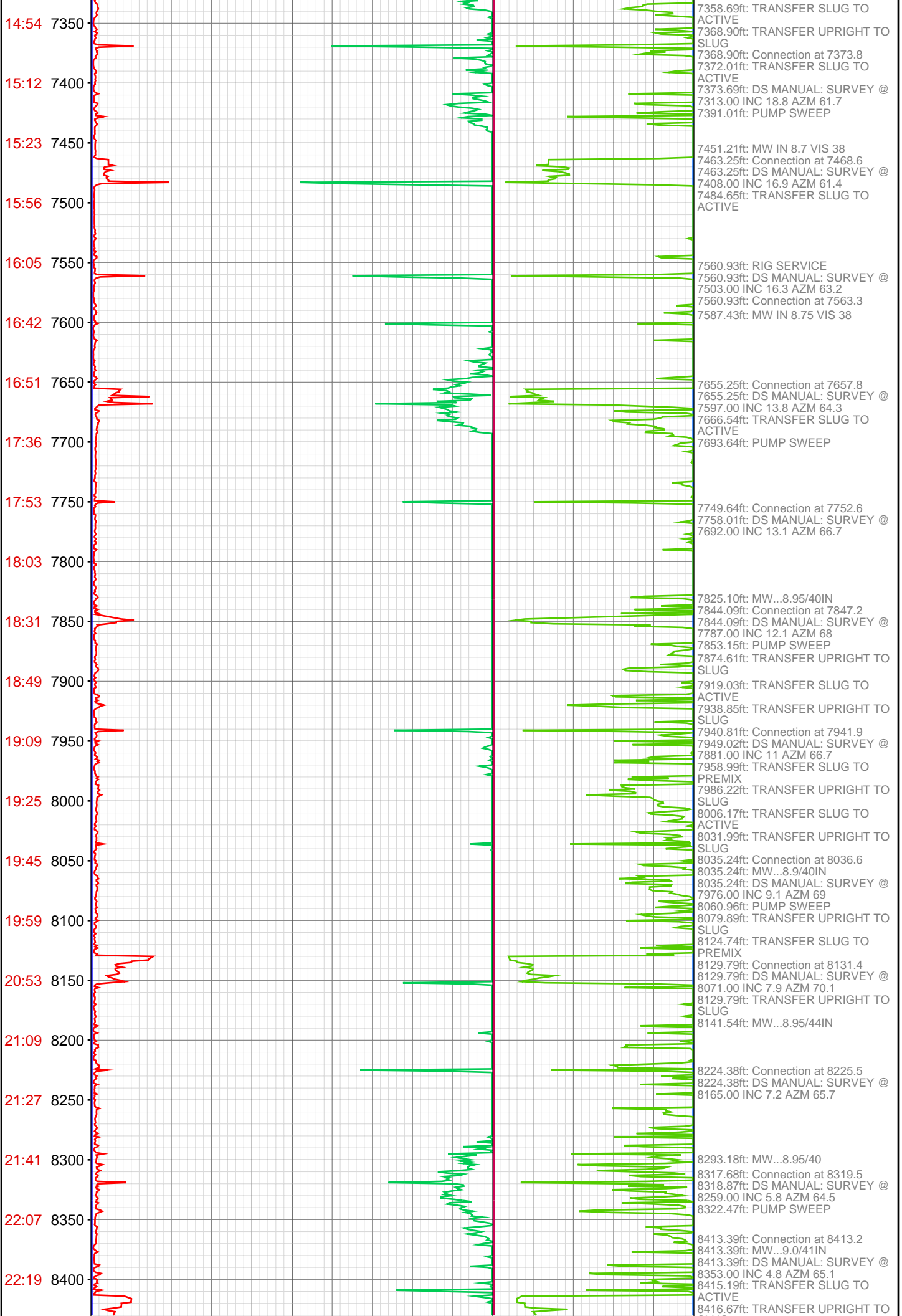


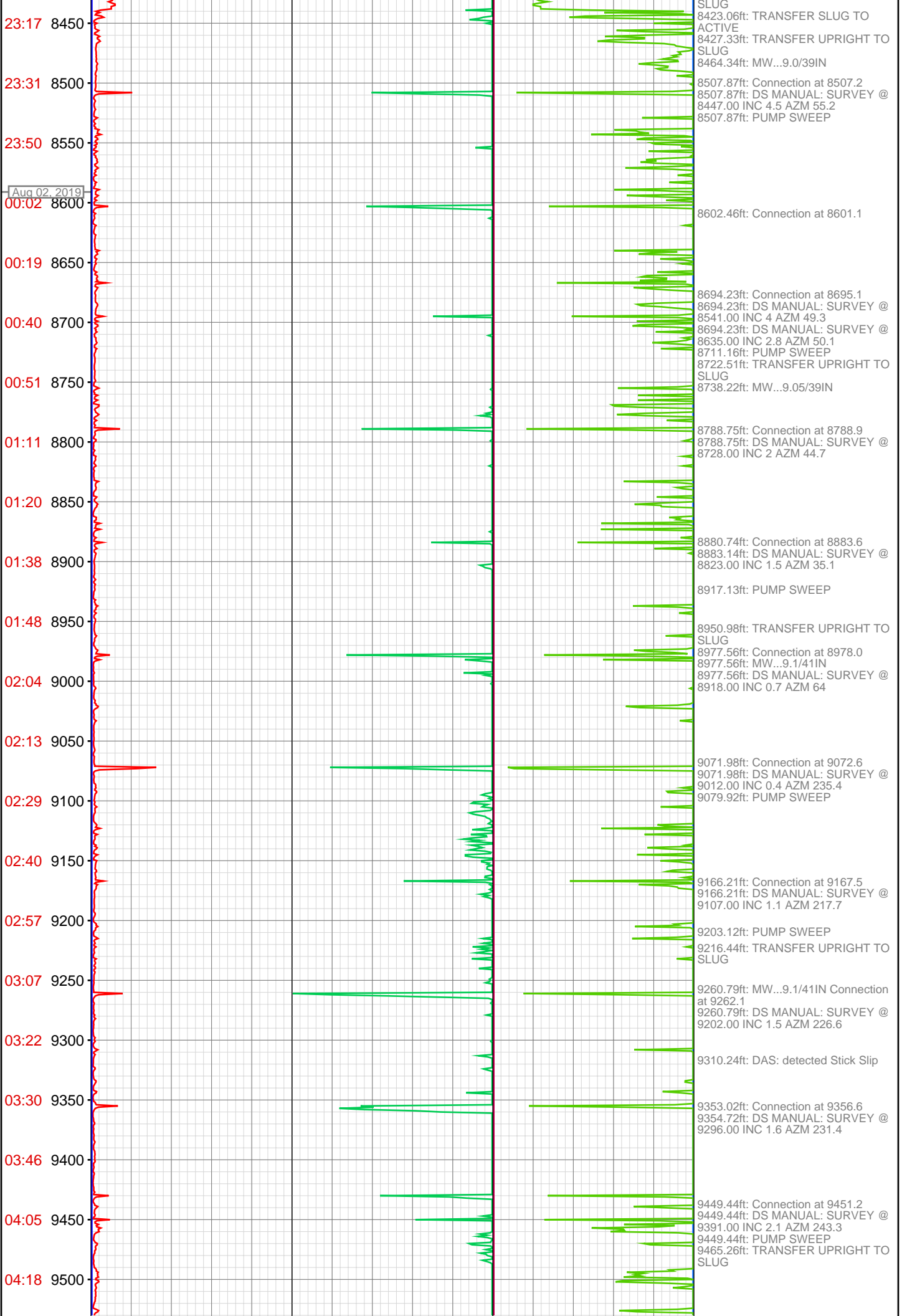
4058.46ft: Connection at 4060.4
4058.46ft: DS MANUAL: SURVEY @
4000.00 INC 23.5 AZM 63.6
4071.88ft: PUMP SWEEP
4091.83ft: TRANSFER ACTIVE TO
SLUG
4152.85ft: Connection at 4154.9
4152.85ft: DS MANUAL: SURVEY @
4094.00 INC 22.6 AZM 62.7
4152.85ft: TRANSFER ACTIVE TO
SLUG
4168.90ft: MW...9.2/43IN
4247.18ft: Connection at 4249.4
4247.18ft: DS MANUAL: SURVEY @
4189.00 INC 22.5 AZM 63
4267.22ft: PUMP SWEEP
4342.68ft: Connection at 4344.1
4342.68ft: DS MANUAL: SURVEY @
4284.00 INC 22.9 AZM 63.6
4356.07ft: MW...9.25/41IN
4436.91ft: DS MANUAL: SURVEY @
4378.00 INC 22.7 AZM 65.6
4470.51ft: PUMP SWEEP
4490.78ft: TRANSFER ACTIVE TO
SLUG
4531.20ft: Connection at 4533.3
4552.49ft: DAS: Motor Stall Detected,
Peak DiffP = 579.97 psi
4577.40ft: DAS: detected Stick Slip
4585.89ft: MW...9.2/41IN
4624.11ft: Connection at 4628.0
4625.79ft: DS MANUAL: SURVEY @
4473.00 INC 23.3 AZM 65.6
4627.99ft: DS MANUAL: SURVEY @
4568.00 INC 24.3 AZM 65.6
4647.21ft: PUMP SWEEP
4720.31ft: Connection at 4722.5
4725.00ft: DS MANUAL: SURVEY @
4662.00 INC 22.9 AZM 65.8
4727.92ft: MW...9.25/40IN
4815.75ft: Connection at 4817.1
4815.75ft: DS MANUAL: SURVEY @
4757.00 INC 23.4 AZM 64.2
4910.11ft: Connection at 4911.7
4910.73ft: DS MANUAL: SURVEY @
4852.00 INC 22.8 AZM 63.8
4926.31ft: PUMP SWEEP
4947.41ft: TRANSFER ACTIVE TO
SLUG
5004.63ft: Connection at 5006.4
5004.66ft: DS MANUAL: SURVEY @
4946.00 INC 23.2 AZM 62.3
5004.66ft: TRANSFER ACTIVE TO
SLUG
5033.89ft: MW...9.25/42IN
5098.98ft: Connection at 5101.1
5098.98ft: DS MANUAL: SURVEY @
5041.00 INC 21.9 AZM 61.8
5121.59ft: TRANSFER SLUG TO
ACTIVE
5157.87ft: TRANSFER UPRIGHT TO
SLUG
5193.47ft: Connection at 5195.8
5193.47ft: DS MANUAL: SURVEY @
5135.00 INC 23 AZM 62.6
5265.26ft: TRANSFER SLUG TO
ACTIVE

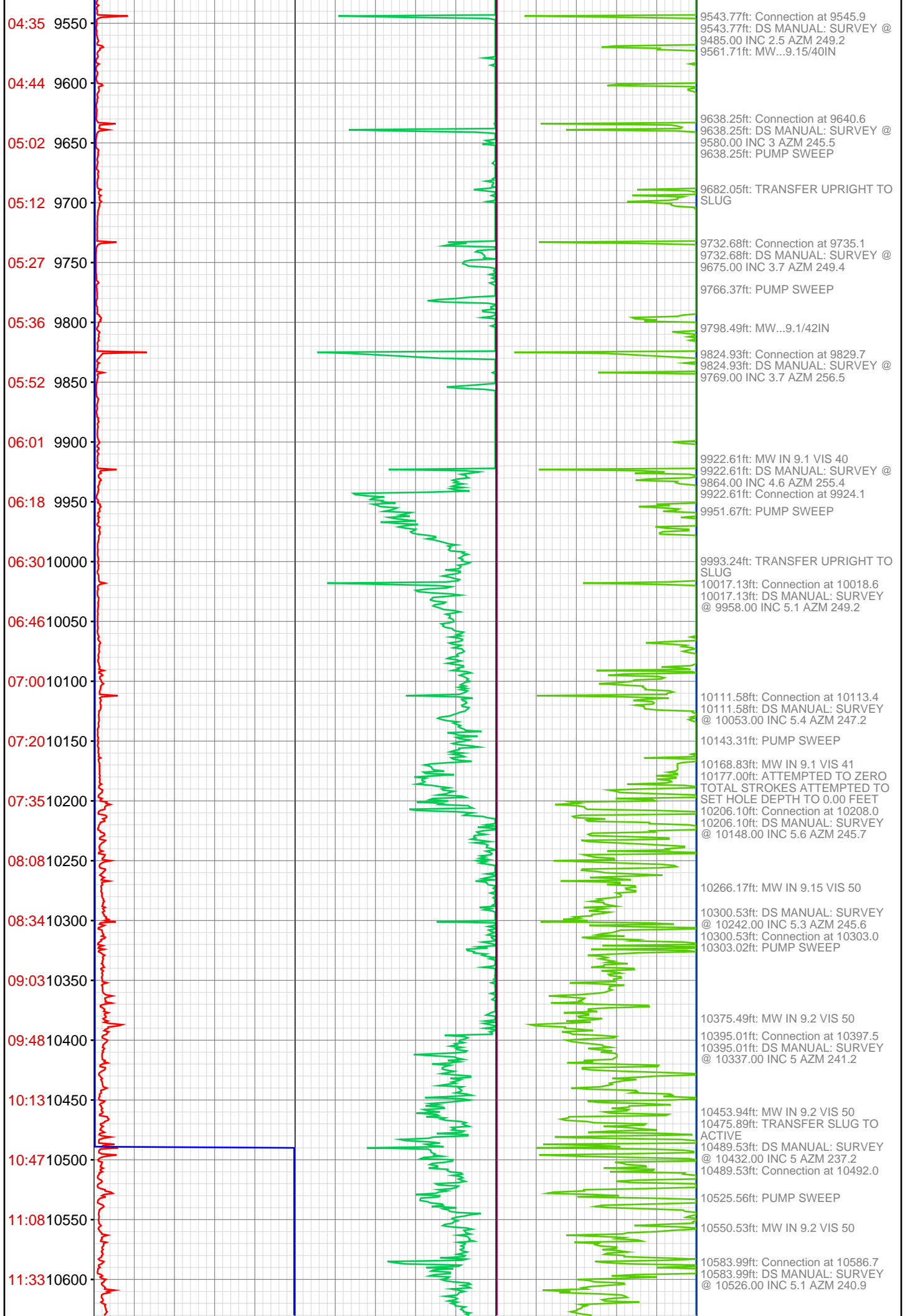
Aug 01, 2019











12:05 10650

10700



10637.11ft: MW IN 9.2 VIS 54
10657.68ft: PUMP SWEEP
10664.96ft: TRANSFER ACTIVE TO SLUG
10666.01ft: FILLING TRIP TANKS
10666.01ft: PUMP SWEEP
10666.01ft: DS MANUAL: SURVEY
@ 10606.00 INC 4.7 AZM 244.6