

CC Federal 0697-03-04W
Garfield County, CO
Q191232 & RM-191073
Design #4

PROJECT DETAILS:	Garfield County, CO
Geodetic System:	US State Plane 1983
Datum:	North American Datum 1983
Ellipsoid:	GRS 1980
Zone:	Colorado Central Zone
System Datum:	Mean Sea Level

Company Name: Laramie Energy, LLC
CC Federal 0697-03-04W
Garfield County, CO
Rig: H&P #522
Created By: Will Jircik
Date: 13:44, July 22 2019

FORMATION TOP DETAILS		
TVDPath	MDPath	Formation
606.0	607.3	Mahogany
4977.0	5335.9	Wasatch 'G' Sand
6877.0	7182.3	Ohio Creek
6827.0	7345.2	Williams Fork
7627.0	8170.3	TOG
9277.0	9820.3	Cameo
9507.0	10050.3	Base Cameo Coal
9527.0	10070.3	Rollins
9765.0	10308.3	Cozzette
10038.0	10581.3	Corcoran

DESIGN TARGET DETAILS							
Name	TVD	+N/-S	+E/-W	Northing	Easting	Latitude	Longitude
PBHL - CC Federal 0697-03-04W	10288.0	1640.0	2240.5	1641030.93	2235845.23	39.562116	-108.210792

WELL DETAILS: CC Federal 0697-03-04W						
+N/-S	+E/-W	Northing	Easting	8609.0	Latitude	Longitude
0.0	0.0	1639458.75	2233556.62		39.557614	-108.218739

DESIGN ANNOTATIONS									
MD	Inc	Azi	TVD	+N/-S	+E/-W	VSect	Departure	Annotation	
300.0	0.00	0.00	300.0	0.0	0.0	0.0	0.0	KOP/ (Build 3.00°/100°)	
1065.7	22.97	53.80	1045.3	89.4	122.2	151.4	151.4	EOB @ 22.97° Inc. / 53.80° Azm	
7404.6	22.97	53.80	6881.7	1550.5	2118.3	2625.2	2625.2	Drop 3° / 100°	
8170.3	0.00	0.00	7627.0	1640.0	2240.5	2776.6	2776.6	EOD @ Vertical	
10831.3	0.00	0.00	10288.0	1640.0	2240.5	2776.6	2776.6	TD @ 10831.3' MD / 10288.0' TVD	



T

M

Azimuths to True North

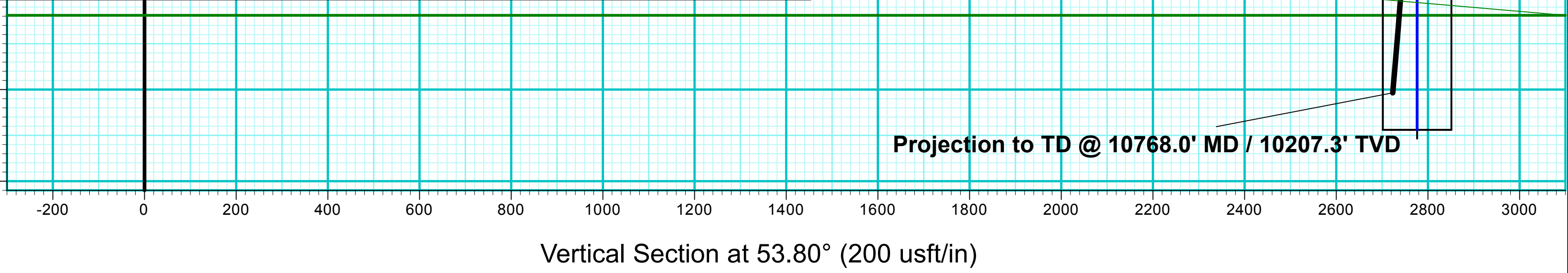
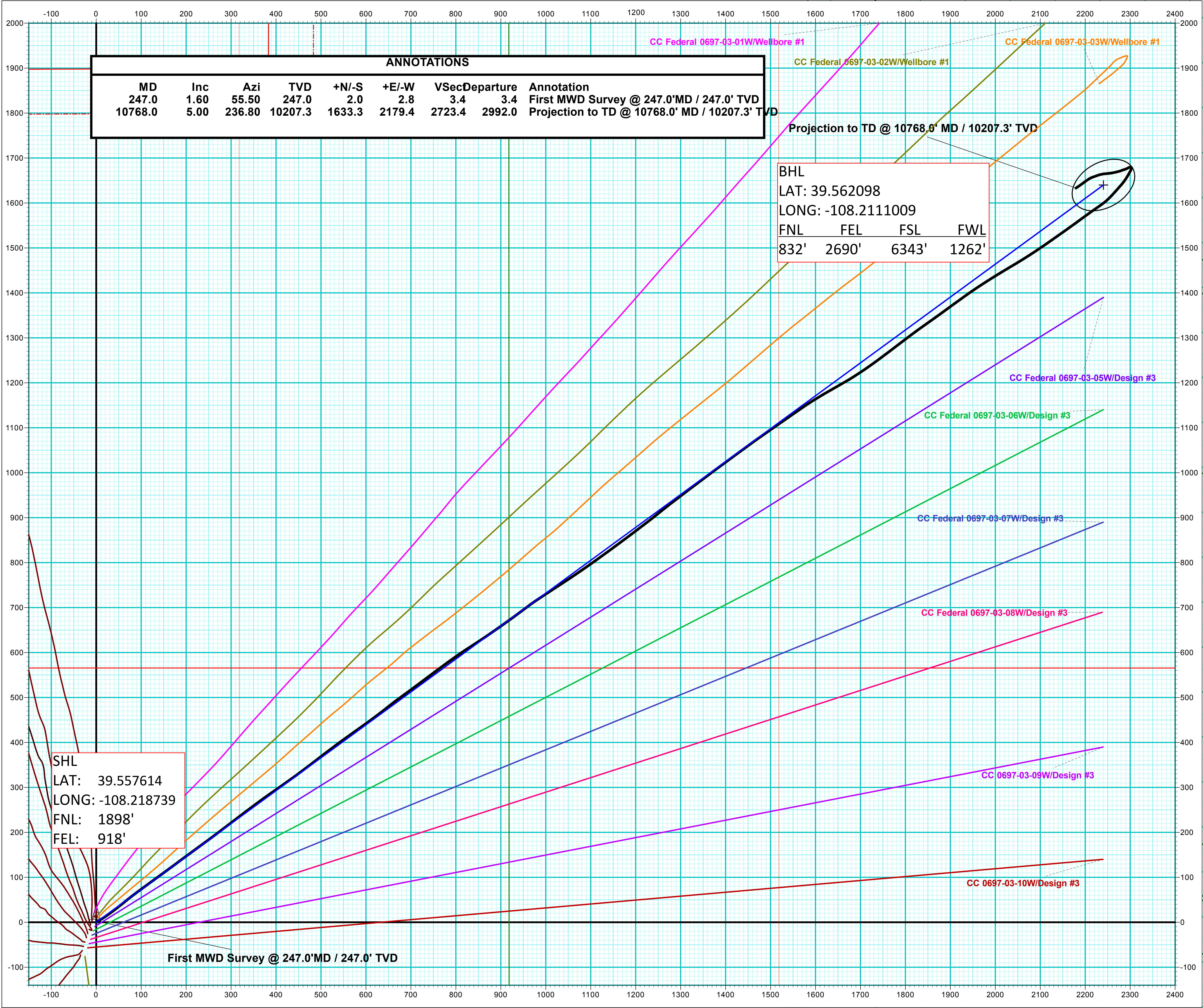
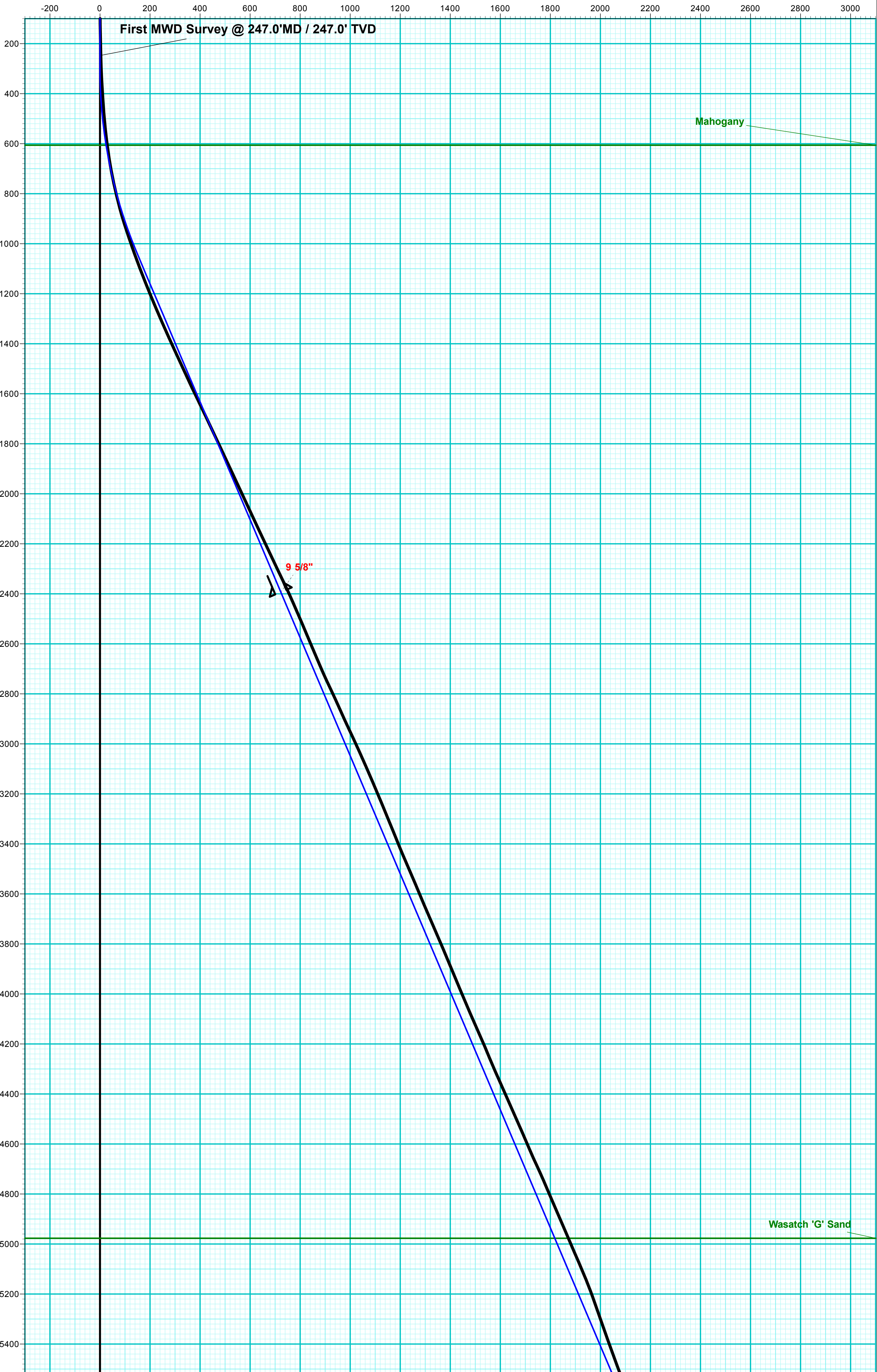
Magnetic North: 9.57°

Strength: 51419.0snT

Dip Angle: 65.80°

Date: 7/17/2019

Model: HDGM



Vertical Section at 53.80° (200 usft/in)