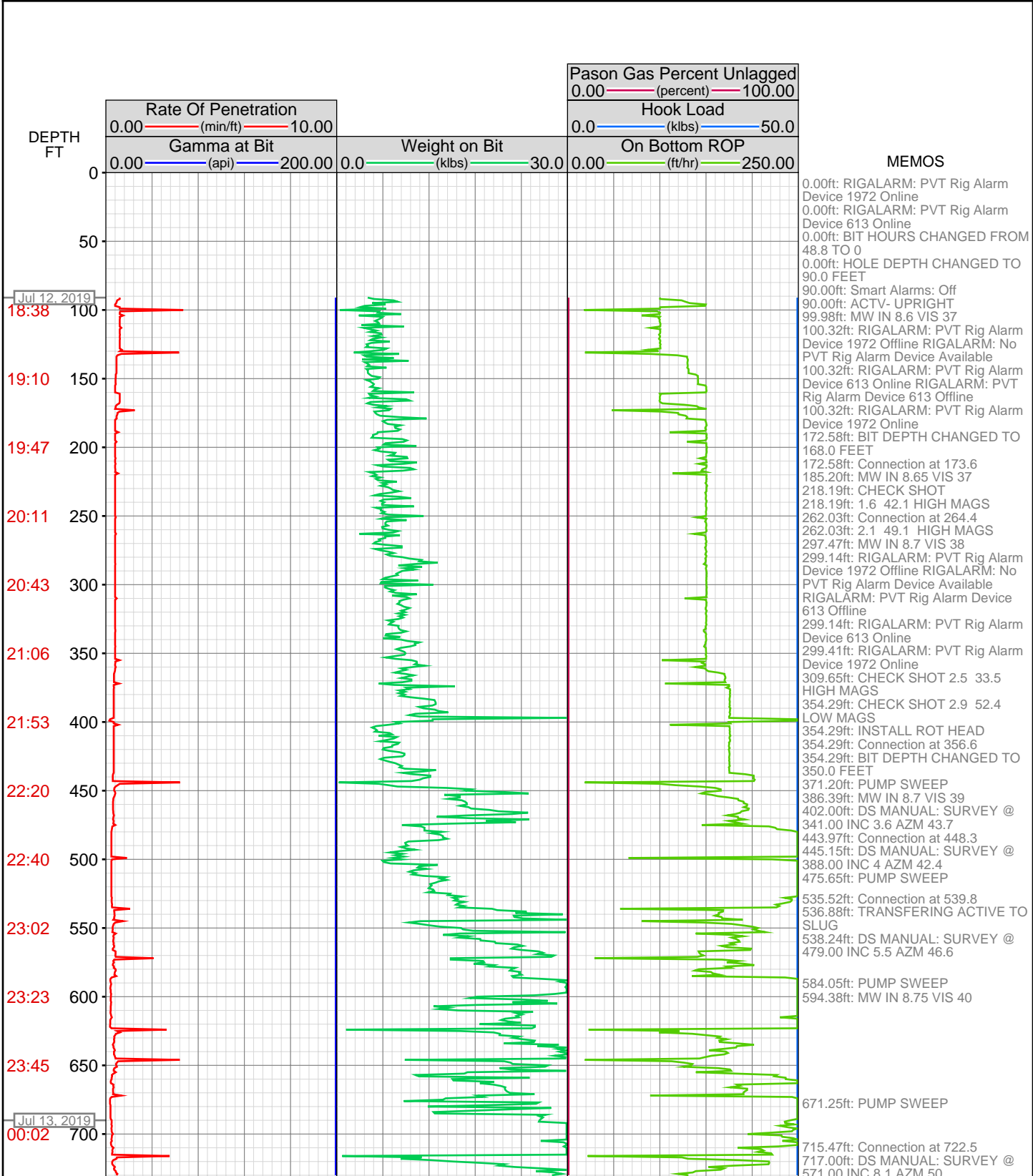
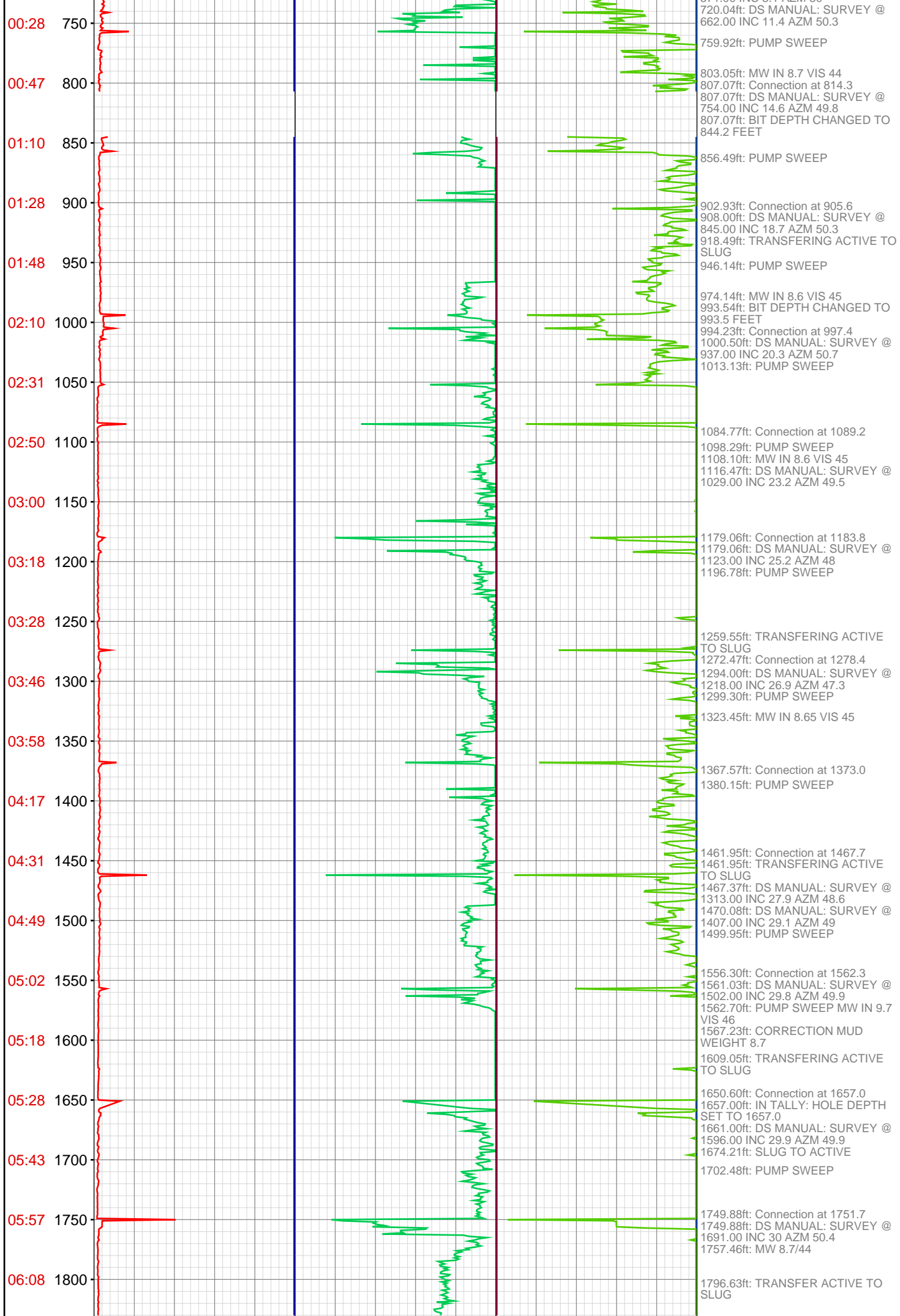


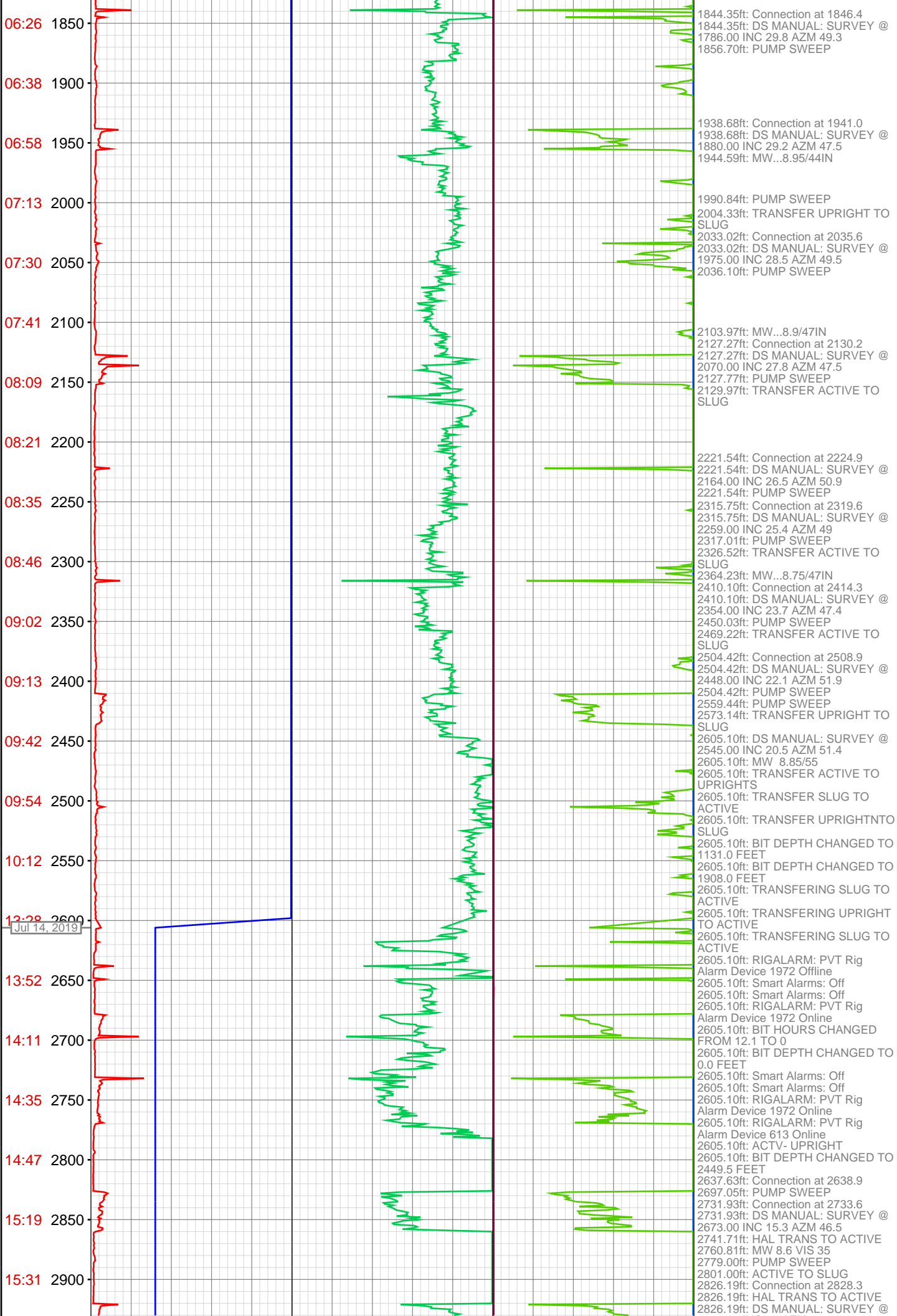
DataHub EDR Log

Wed Jul 17, 2019 07:41:48
Well Dossier 1562956121
Andy McCarthy

OPERATOR: Laramie Energy II, LLC	CONTRACTOR: Helmerich and Payne I.D.C.
WELL: CC FEDERAL 0697-03-03W	UNIQUE WELL ID: 0504523928
FIELD:	SPUD DATE: Jul 12, 2019 18:30
LOCATION: LOT 12 SECTION 4 T6S R97W 6TH P.M.	RELEASE DATE:
COUNTRY: USA	
RIG: H&P 522	

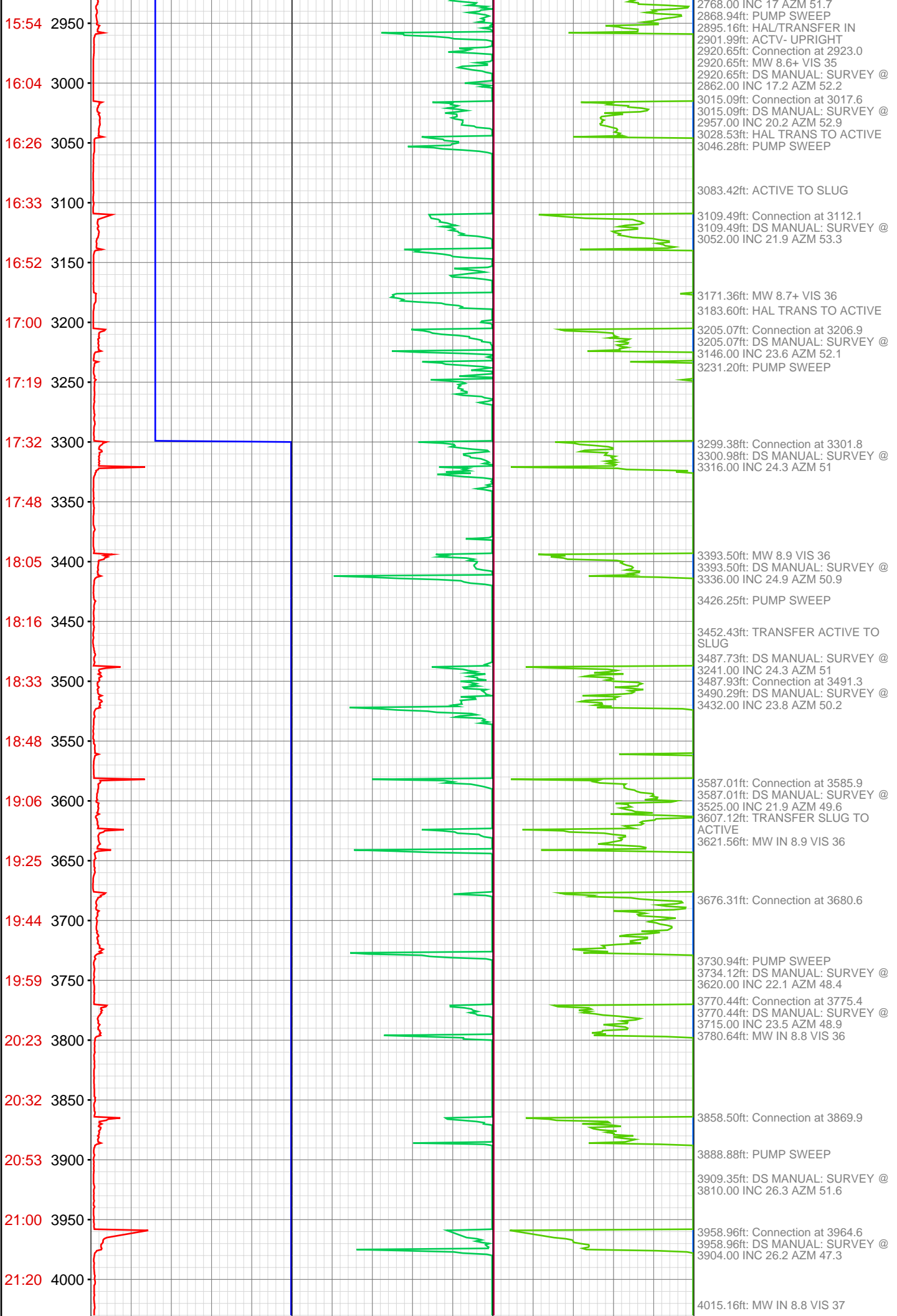






06:26 1850
06:38 1900
06:58 1950
07:13 2000
07:30 2050
07:41 2100
08:09 2150
08:21 2200
08:35 2250
08:46 2300
09:02 2350
09:13 2400
09:42 2450
09:54 2500
10:12 2550
12:28 2600
13:52 2650
14:11 2700
14:35 2750
14:47 2800
15:19 2850
15:31 2900

Jul 14, 2019



15:54 2950

16:04 3000

16:26 3050

16:33 3100

16:52 3150

17:00 3200

17:19 3250

17:32 3300

17:48 3350

18:05 3400

18:16 3450

18:33 3500

18:48 3550

19:06 3600

19:25 3650

19:44 3700

19:59 3750

20:23 3800

20:32 3850

20:53 3900

21:00 3950

21:20 4000

2768.00 INC 17 AZM 51.7
 2868.94ft: PUMP SWEEP
 2895.16ft: HAL/TRANSFER IN
 2901.99ft: ACTV- UPRIGHT
 2920.65ft: Connection at 2923.0
 2920.65ft: MW 8.6+ VIS 35
 2920.65ft: DS MANUAL: SURVEY @
 2862.00 INC 17.2 AZM 52.2
 3015.09ft: Connection at 3017.6
 3015.09ft: DS MANUAL: SURVEY @
 2957.00 INC 20.2 AZM 52.9
 3028.53ft: HAL TRANS TO ACTIVE
 3046.28ft: PUMP SWEEP

 3083.42ft: ACTIVE TO SLUG
 3109.49ft: Connection at 3112.1
 3109.49ft: DS MANUAL: SURVEY @
 3052.00 INC 21.9 AZM 53.3

 3171.36ft: MW 8.7+ VIS 36
 3183.60ft: HAL TRANS TO ACTIVE
 3205.07ft: Connection at 3206.9
 3205.07ft: DS MANUAL: SURVEY @
 3146.00 INC 23.6 AZM 52.1
 3231.20ft: PUMP SWEEP

 3299.38ft: Connection at 3301.8
 3300.98ft: DS MANUAL: SURVEY @
 3316.00 INC 24.3 AZM 51

 3393.50ft: MW 8.9 VIS 36
 3393.50ft: DS MANUAL: SURVEY @
 3336.00 INC 24.9 AZM 50.9
 3426.25ft: PUMP SWEEP

 3452.43ft: TRANSFER ACTIVE TO
 SLUG
 3487.73ft: DS MANUAL: SURVEY @
 3241.00 INC 24.3 AZM 51
 3487.93ft: Connection at 3491.3
 3490.29ft: DS MANUAL: SURVEY @
 3432.00 INC 23.8 AZM 50.2

 3587.01ft: Connection at 3585.9
 3587.01ft: DS MANUAL: SURVEY @
 3525.00 INC 21.9 AZM 49.6
 3607.12ft: TRANSFER SLUG TO
 ACTIVE
 3621.56ft: MW IN 8.9 VIS 36

 3676.31ft: Connection at 3680.6

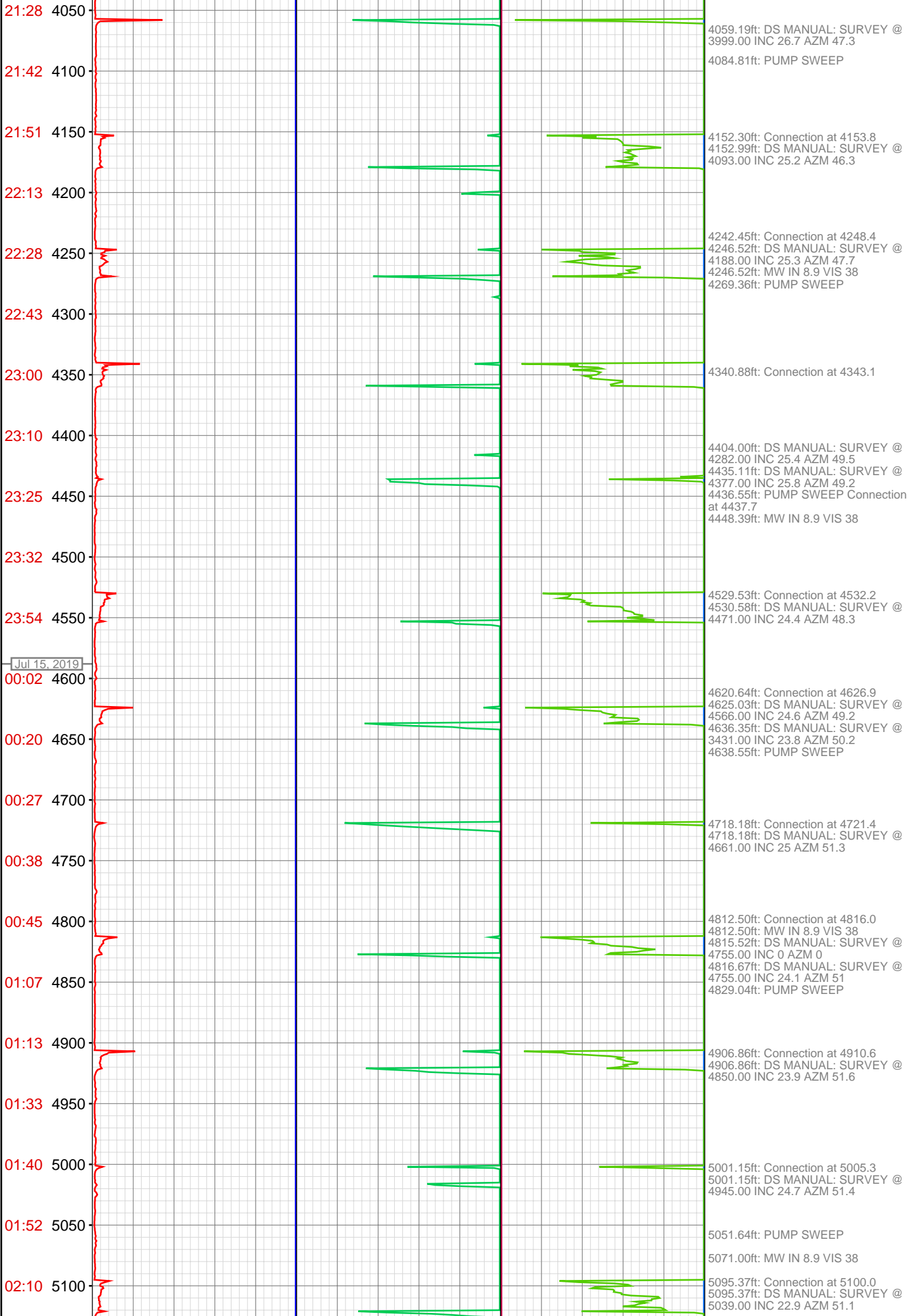
 3730.94ft: PUMP SWEEP
 3734.12ft: DS MANUAL: SURVEY @
 3620.00 INC 22.1 AZM 48.4
 3770.44ft: Connection at 3775.4
 3770.44ft: DS MANUAL: SURVEY @
 3715.00 INC 23.5 AZM 48.9
 3780.64ft: MW IN 8.8 VIS 36

 3858.50ft: Connection at 3869.9

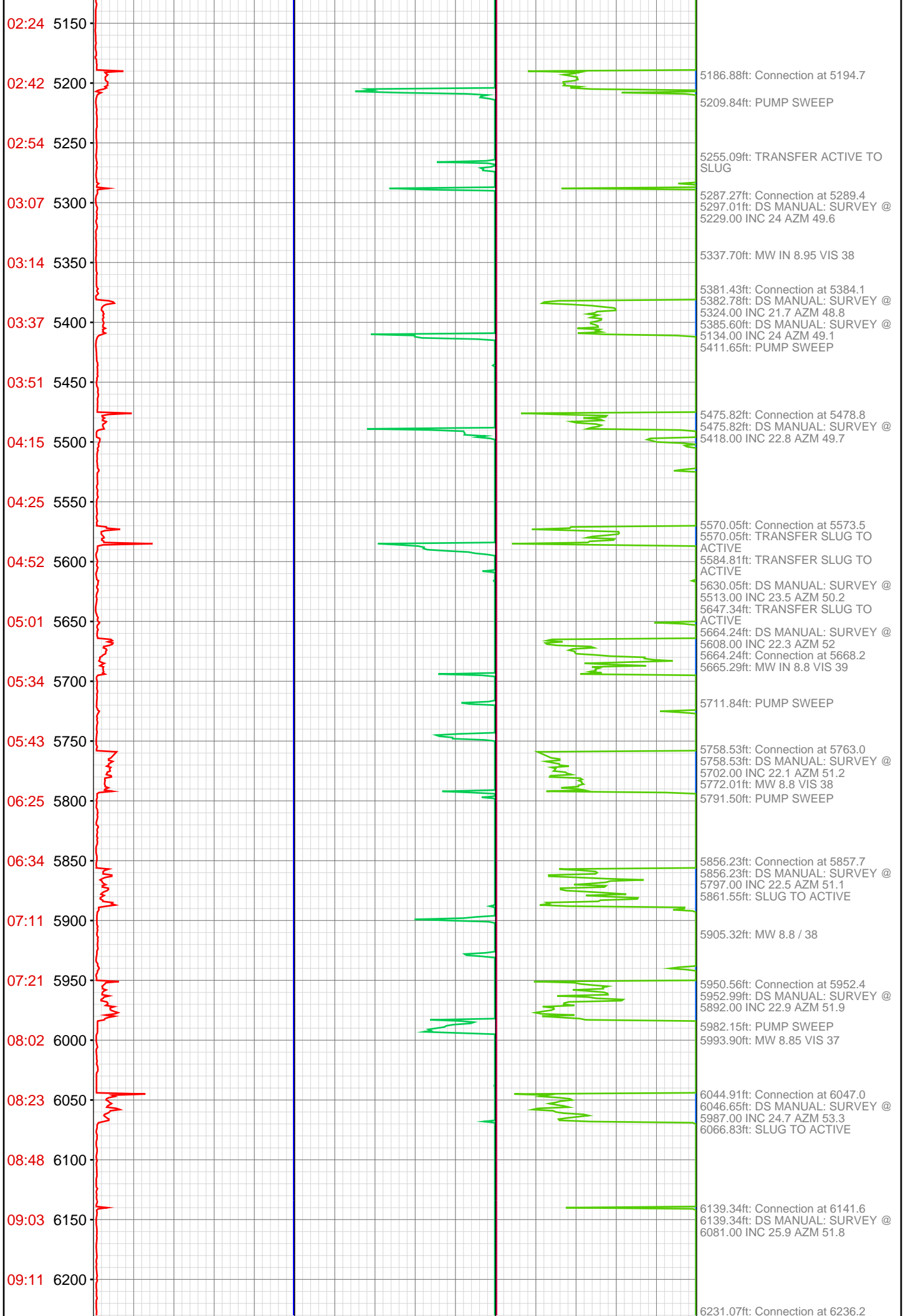
 3888.88ft: PUMP SWEEP
 3909.35ft: DS MANUAL: SURVEY @
 3810.00 INC 26.3 AZM 51.6

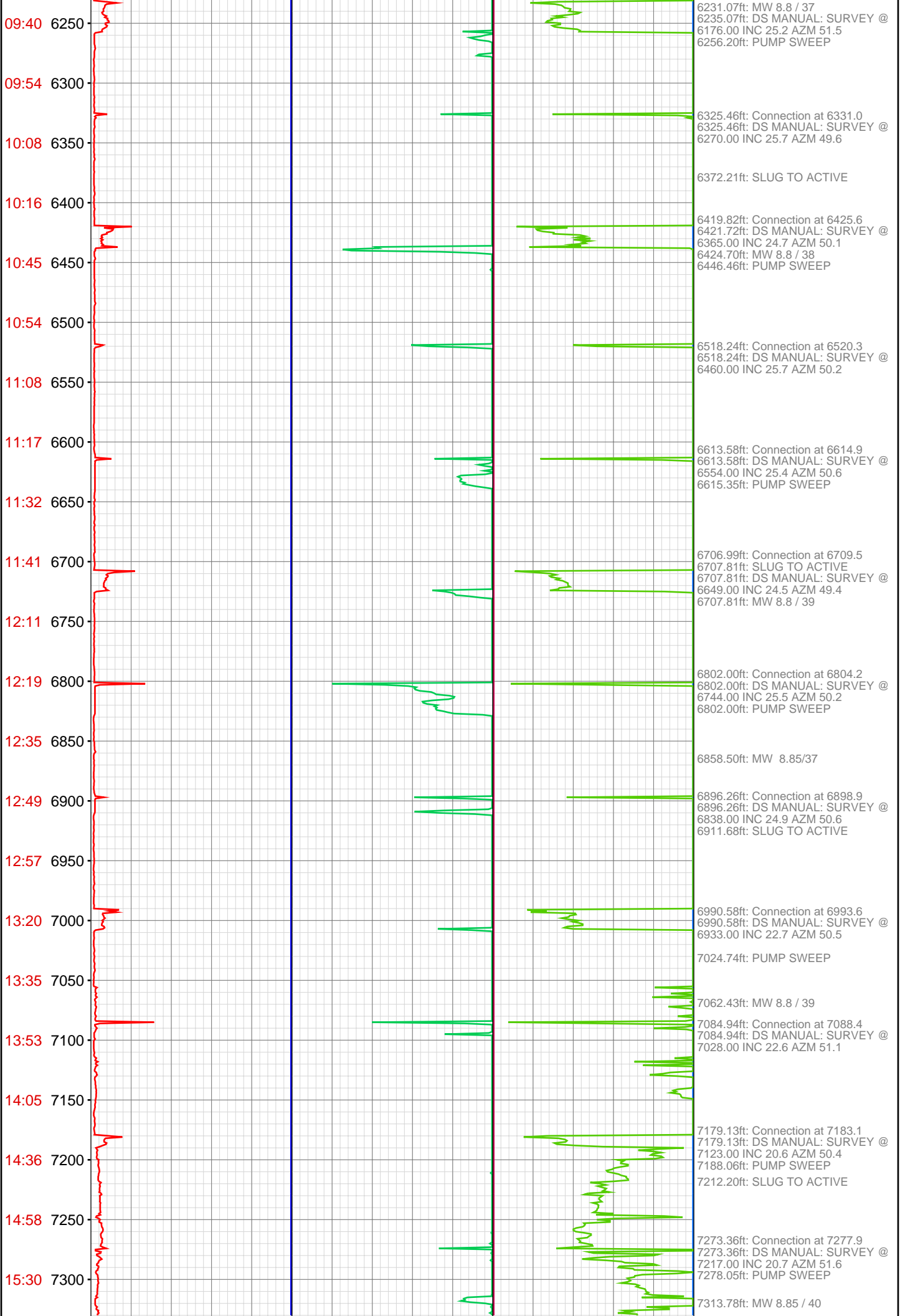
 3958.96ft: Connection at 3964.6
 3958.96ft: DS MANUAL: SURVEY @
 3904.00 INC 26.2 AZM 47.3

 4015.16ft: MW IN 8.8 VIS 37

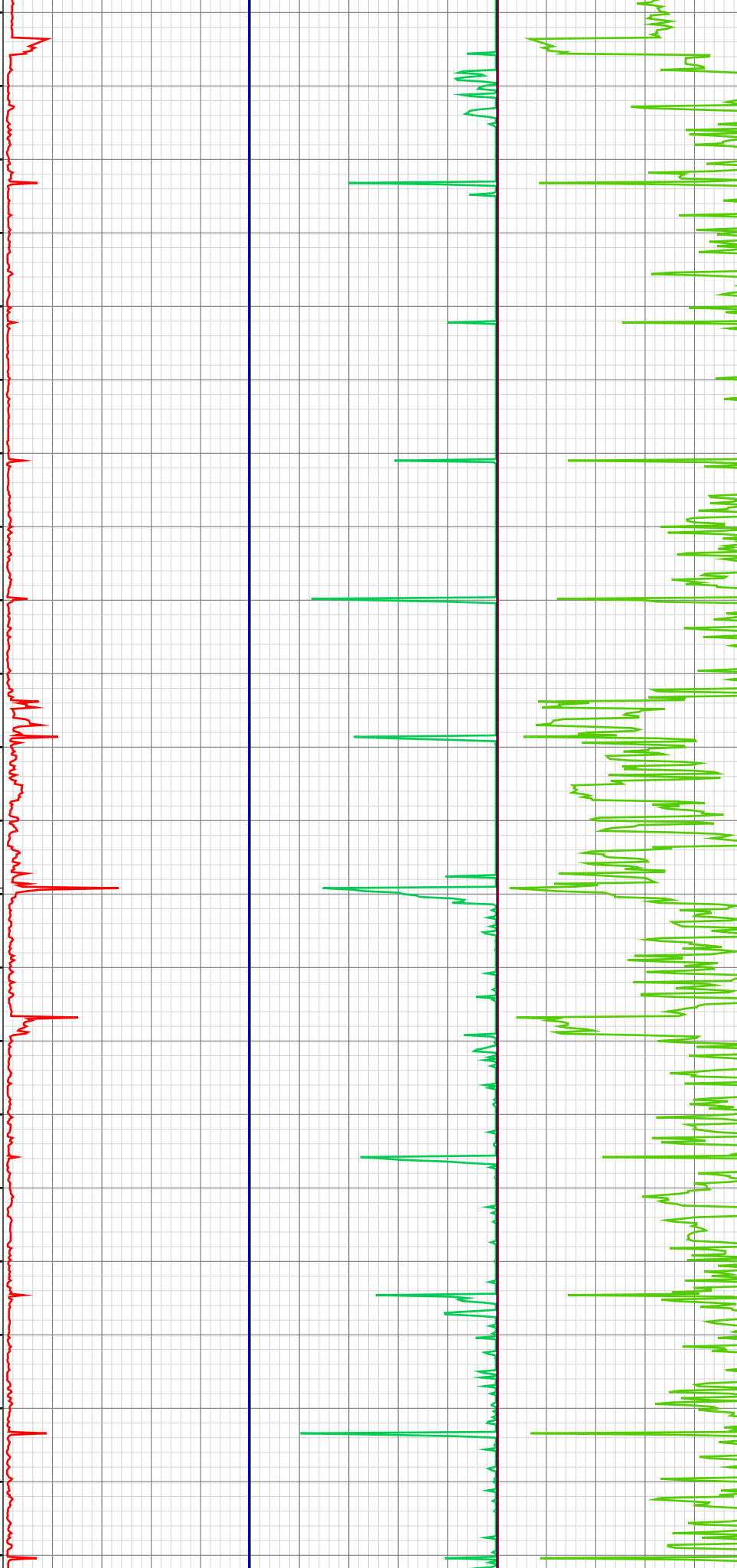


Jul 15, 2019



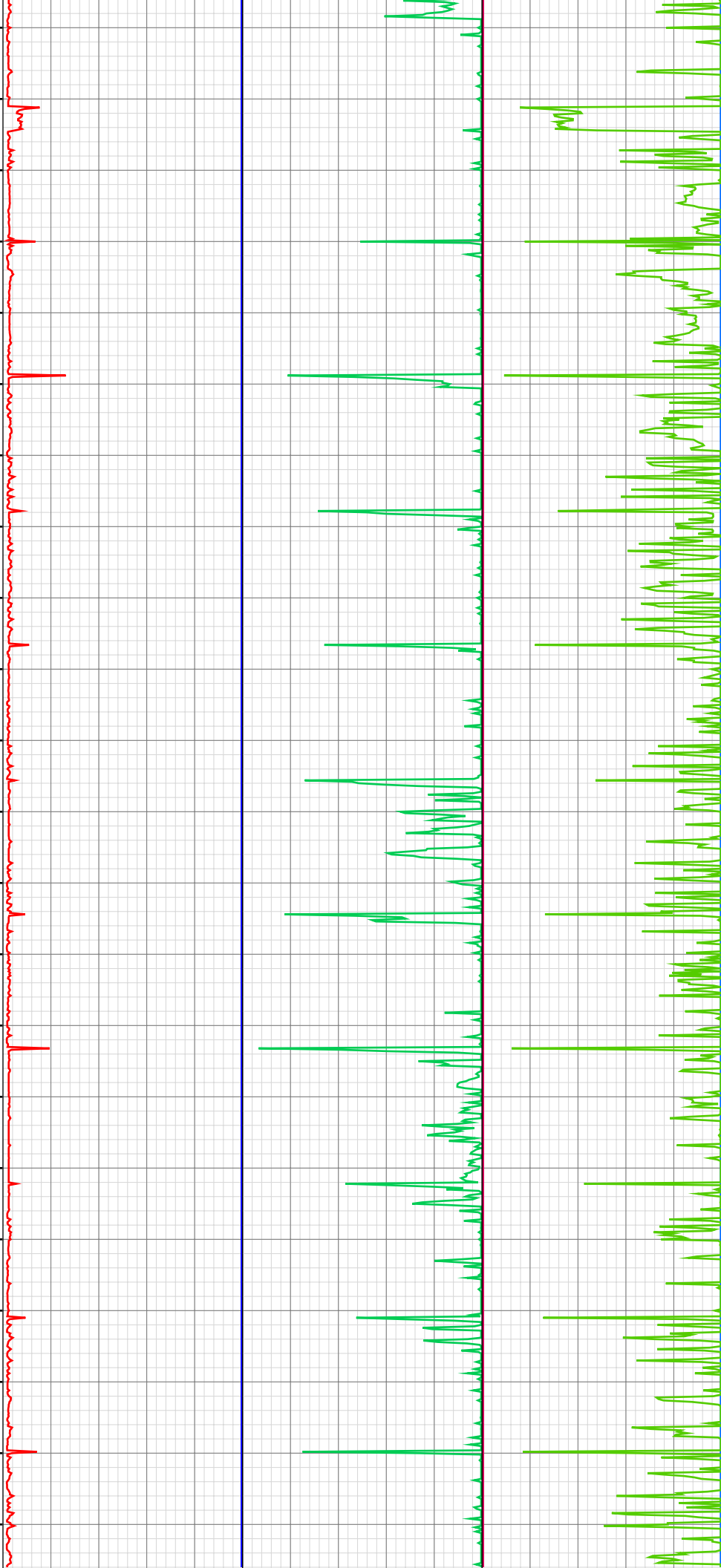


15:47 7350
16:23 7400
16:36 7450
17:19 7500
17:31 7550
17:57 7600
18:08 7650
18:28 7700
18:59 7750
19:11 7800
19:55 7850
20:22 7900
Jul 16, 2019
07:27 7950
07:41 8000
08:16 8050
08:29 8100
08:49 8150
09:04 8200
09:24 8250
09:37 8300
09:56 8350
10:09 8400



7335.86ft: SLUG TO ACTIVE
7367.78ft: MW 8.8/39
7367.78ft: Connection at 7372.7
7367.78ft: DS MANUAL: SURVEY @
7312.00 INC 20.8 AZM 51.3
7465.75ft: DS MANUAL: SURVEY @
7407.00 INC 19.6 AZM 52.2
7465.75ft: RIG SERVICE
7465.75ft: Connection at 7467.5
7465.75ft: PUMP SWEEP
7513.98ft: SLUG TO ACTIVE
7560.01ft: SLUG TO ACTIVE
7560.01ft: Connection at 7562.2
7560.01ft: MW 8.85 / 39
7560.01ft: DS MANUAL: SURVEY @
7502.00 INC 17.7 AZM 51.8
7654.40ft: MW IN 8.8 VIS 38
7654.40ft: Connection at 7656.7
7748.46ft: Connection at 7751.5
7755.54ft: DS MANUAL: SURVEY @
7596.00 INC 15.6 AZM 51.3 DS
MANUAL: SURVEY @ 7691.00 INC
13.8 AZM 50.9
7787.40ft: PUMP SWEEP
7830.91ft: MW IN 8.9 VIS 38
7842.85ft: Connection at 7846.1
7867.42ft: DS MANUAL: SURVEY @
7785.00 INC 11.5 AZM 47.6
7937.14ft: MW IN 8.95 VIS 38
7937.14ft: Connection at 7940.8
7938.22ft: DS MANUAL: SURVEY @
7880.00 INC 9.9 AZM 46
7945.34ft: TRANSFER SLUG TO
ACTIVE
7945.34ft: FILLING TRIP TANKS
7945.34ft: SLUG TO ACTIVE
7945.34ft: PREMIX TO SLUG
7945.34ft: PREMIX TO SLUG
COMPLETE
7945.34ft: SLUG TO ACTIVE
7945.34ft: PREMIX TO SLUG
7945.34ft: PREMIX TO SLUG
COMPLETE
7945.34ft: SLUG TO ACTIVE
7945.34ft: SLUG TO ACTIVE
COMPLETE
7945.34ft: PREMIX TO SLUG
7945.34ft: PREMIX TO SLUG
COMPLETE
7945.34ft: SLUG TO ACTIVE
7945.34ft: PREMIX TO SLUG
7945.34ft: SLUG TO ACTIVE
7945.34ft: ACTIVE TO TRIP TANKS
7945.34ft: OUTSOURCED WATER
TO SLUG
7945.34ft: PULL ROT HEAD
7945.34ft: BIT HOURS CHANGED
FROM 23.5 TO 0
7945.34ft: TRANSFER SLUG TO
ACTIVE
7945.34ft: TRANSFER SLUG TO
ACTIVE
7945.34ft: TRANSFER SLUG TO
ACTIVE
7945.34ft: TRANSFER SLUG TO
ACTIVE
7945.34ft: TRANSFER SLUG TO
ACTIVE
7945.34ft: BIT DEPTH CHANGED TO
7909.3 FEET
7946.82ft: PUMP SWEEP
7953.71ft: MW 8.9 / 45
8033.96ft: Connection at 8035.5
8033.96ft: DS MANUAL: SURVEY @
7975.00 INC 8 AZM 45.1
8037.70ft: SLUG TO ACTIVE
8043.57ft: MW 8.9 / 40
8128.18ft: Connection at 8130.3
8128.18ft: DS MANUAL: SURVEY @
8070.00 INC 8.1 AZM 47.8
8132.25ft: PUMP SWEEP
8148.20ft: ACTIVE TO SLUG
8183.53ft: MW 8.9 / 40
8222.41ft: Connection at 8224.4
8222.41ft: DS MANUAL: SURVEY @
8164.00 INC 6.8 AZM 46.3
8316.80ft: Connection at 8318.4
8316.80ft: DS MANUAL: SURVEY @
8258.00 INC 6.2 AZM 46
8353.51ft: PUMP SWEEP
8363.55ft: MW 8.9 / 40
8411.02ft: Connection at 8412.1
8411.02ft: DS MANUAL: SURVEY @

10:48 8450
11:00 8500
11:32 8550
11:53 8600
12:07 8650
12:27 8700
12:41 8750
13:02 8800
13:17 8850
13:38 8900
13:50 8950
14:10 9000
14:23 9050
14:42 9100
14:55 9150
15:14 9200
15:27 9250
15:47 9300
15:58 9350
16:38 9400
16:57 9450
17:11 9500



8505.38ft: Connection at 8506.1
8505.38ft: DS MANUAL: SURVEY @
8446.00 INC 4.4 AZM 46.8
8523.82ft: PUMP SWEEP
8535.04ft: ACTIVE TO SLUG

8585.40ft: MW 8.85 / 40
8599.74ft: Connection at 8600.0
8599.74ft: DS MANUAL: SURVEY @
8540.00 INC 4.9 AZM 63.4

8693.93ft: Connection at 8694.0
8693.93ft: DS MANUAL: SURVEY @
8633.00 INC 4.2 AZM 67.5
8708.20ft: PUMP SWEEP
8723.43ft: ACTIVE TO SLUG

8788.35ft: Connection at 8787.8
8788.35ft: DS MANUAL: SURVEY @
8727.00 INC 3.6 AZM 67.7
8796.49ft: SLUG TO ACTIVE
8813.16ft: ACTIVE TO SLUG

8862.73ft: MW 8.85 VIS 45
8882.58ft: Connection at 8882.5
8882.58ft: DS MANUAL: SURVEY @
8822.00 INC 2.3 AZM 73.1
8899.15ft: PUMP SWEEP

8977.10ft: Connection at 8976.9
8977.10ft: DS MANUAL: SURVEY @
8916.00 INC 1.8 AZM 86.5
8985.47ft: MW 8.9 / 42

9071.46ft: Connection at 9071.5
9071.46ft: DS MANUAL: SURVEY @
9011.00 INC 0.7 AZM 137.4
9074.64ft: PUMP SWEEP

9165.81ft: Connection at 9166.4
9165.81ft: DS MANUAL: SURVEY @
9106.00 INC 1.1 AZM 197

9260.20ft: Connection at 9261.0 MW
8.9 / 40
9260.20ft: DS MANUAL: SURVEY @
9201.00 INC 2 AZM 199.6
9260.33ft: PUMP SWEEP

9354.50ft: DS MANUAL: SURVEY @
9295.00 INC 2.4 AZM 203.8
9354.50ft: RIG SERVICE
9354.50ft: Connection at 9355.5

9448.79ft: Connection at 9450.1
9448.79ft: DS MANUAL: SURVEY @
9390.00 INC 2.9 AZM 207.4
9451.12ft: PUMP SWEEP
9475.49ft: MW 9.0 / 40

