

Final Reclamation Inspection

October 17, 2019

Operator: HIGHPOINT OPERATING CORPORATION- 10071

Location ID: 323189

Inspection Document #: 697500736

Weld County, CO

SESW Section 9 T6N R66W

Chris Binschus
Reclamation Specialist, COGCC



COLORADO

**Oil & Gas Conservation
Commission**

Department of Natural Resources

Inspection Photos
Location Name: LOVELY-66N66W /9SESW
Location ID: 323189

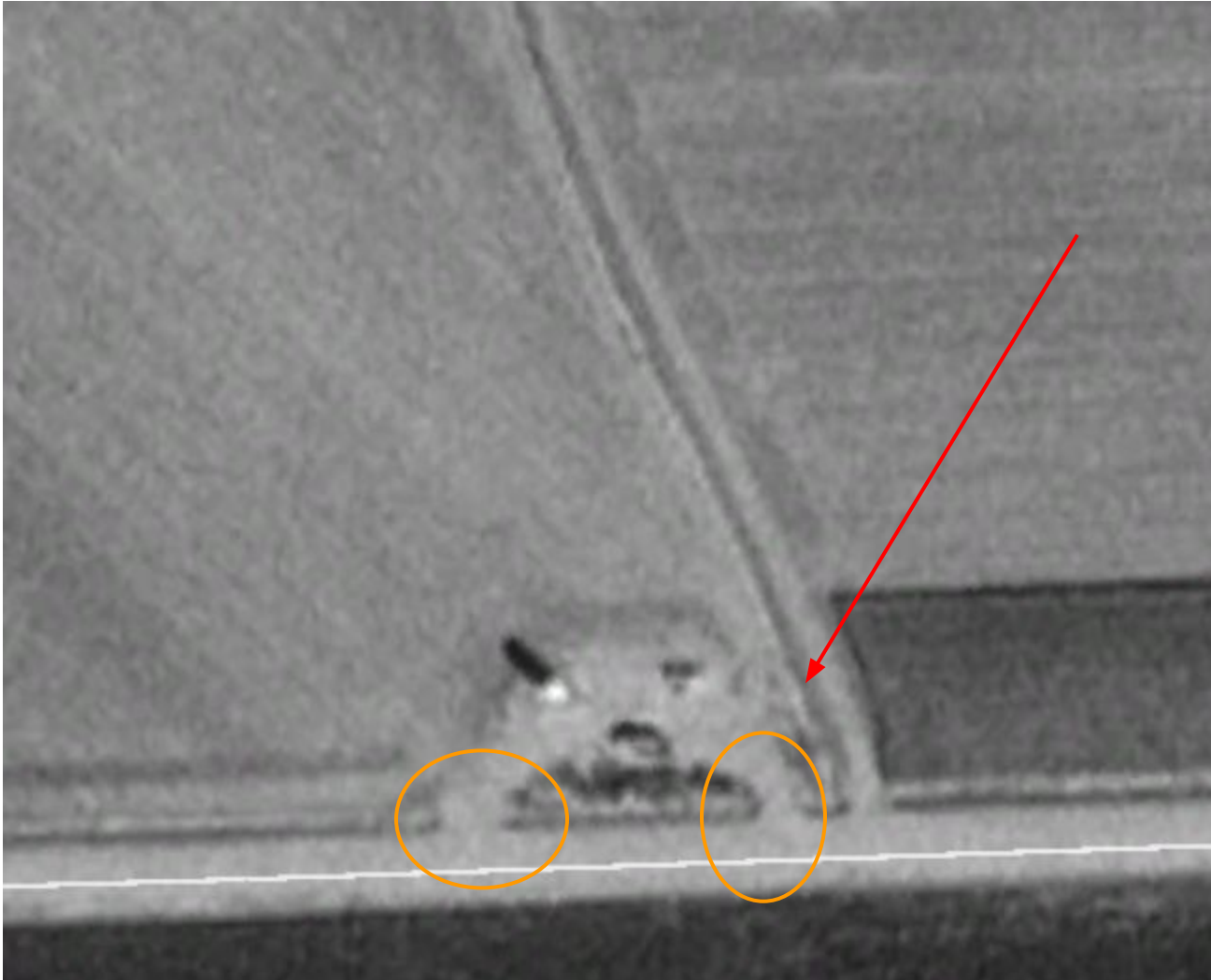


Photo 1. Google Earth aerial imagery taken 10/3/1999. Imagery is illustrating that the original access was limited to two entry points off CR 70 (orange circles). Red arrow illustrates a bar ditch along a two-track.



Photo 2. Google Earth aerial imagery taken 10/7/2004. Imagery is illustrating that an additional access (red arrow) was installed along the eastern perimeter of the location; therefore, a culvert (red circle) was installed and a section of the bar ditch along the eastern perimeter of the location was removed. As of 10/7/2019, Operator has failed to remove the culvert (orange circle) and put the bar ditch back in.



Photo 3. Photo taken on October 7, 2019 of the culvert from the tank battery location that was illustrated in the previous aerial imagery.

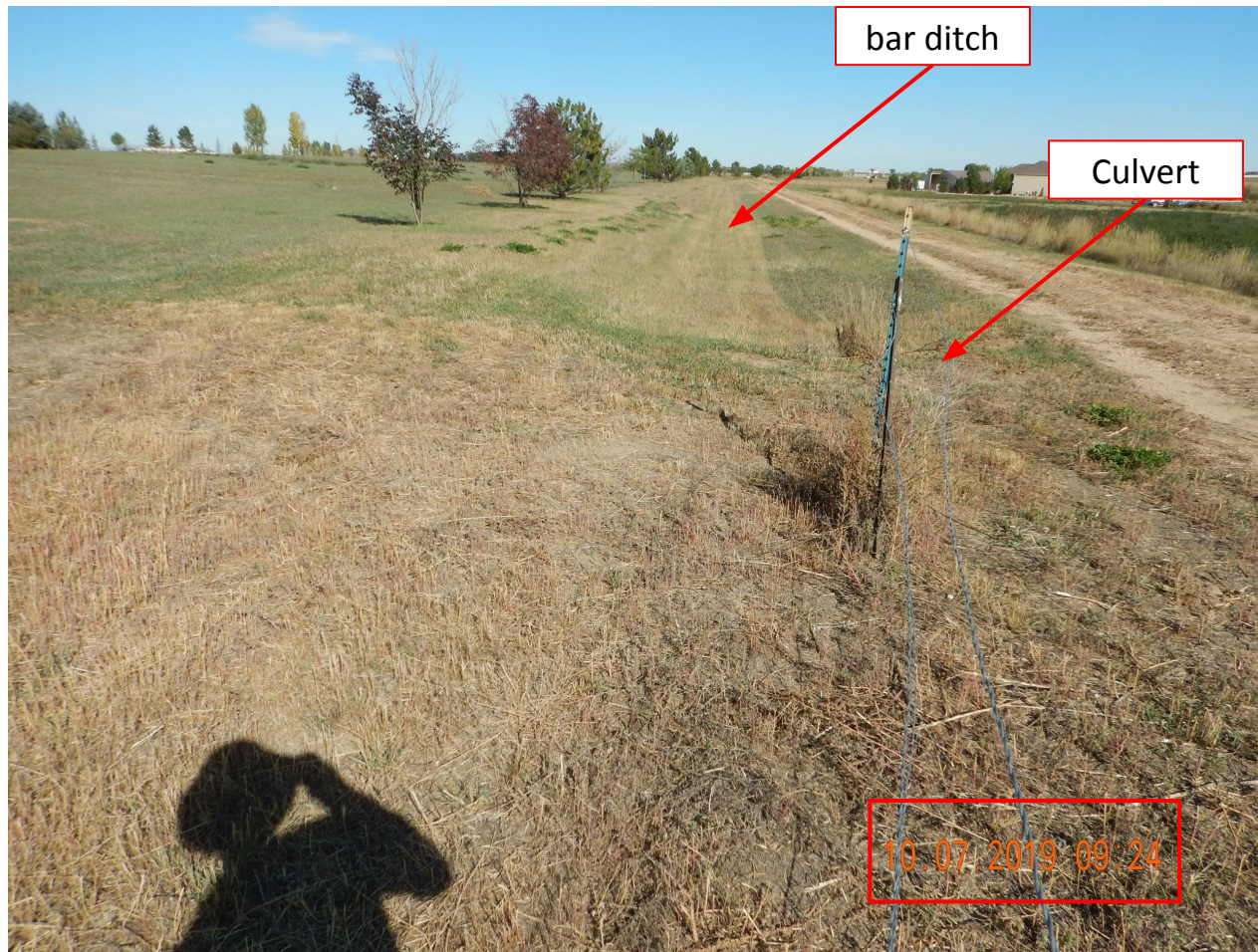


Photo 4. Photo taken on October 7, 2019 from the eastern tank battery location, facing North. Photo illustrates the Operator has failed to remove the culvert and put the bar ditch back in. Bar ditch plays an important role as this area is flooding irrigated.

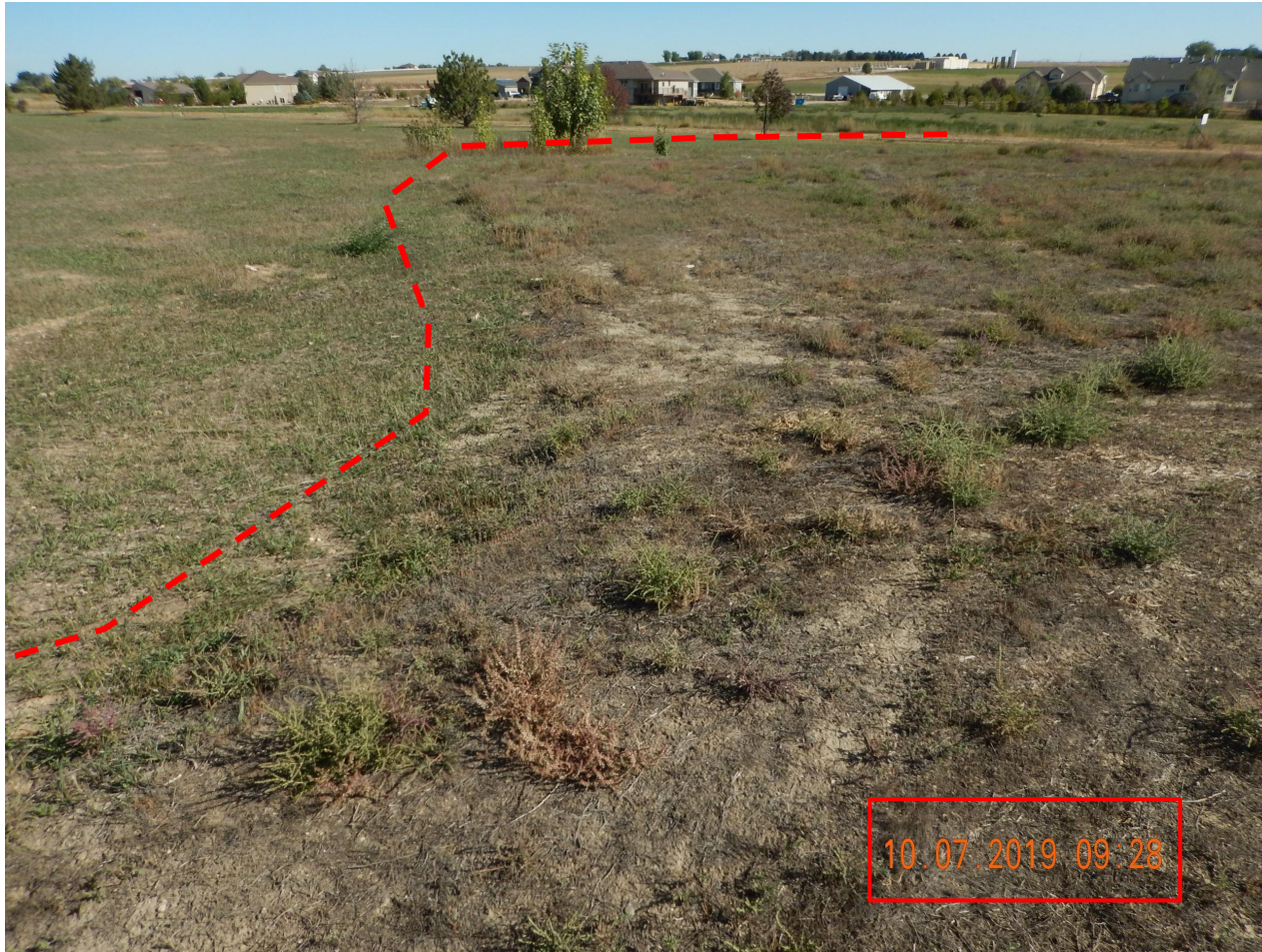


Photo 5. Photo taken on October 7, 2019 from the southwestern tank battery location, facing Northeast. Photo illustrates the Operator failed to properly contour the location to match the surrounding landscape to allow for successful flood irrigation. There appears to be a perimeter ditch along the outside and the location itself is elevated compared to the surrounding landscape. Location is to the right of the red-dashed line.

Inspection Photos
Location Name: LOVELY-66N66W /9SESW
Location ID: 323189



Photo 6. Photo taken on October 7, 2019 from the western tank battery location, facing West. Photo illustrates the reference area vegetation is mostly comprised of Smooth brome. Location is in the foreground of the photo, below the red-dashed line.

Inspection Photos
Location Name: LOVELY-66N66W /9SESW
Location ID: 323189



Photo 7. Photo taken on October 7, 2019 from the central tank battery location, facing South. Photo illustrates the location appears to have been mowed this season. Undesirable species (Kochia and Russian thistle) were observed. Note: Even though the Operator claims to use a seed mix approved by the Surface Owner, it is not reflective of reference area vegetation.



Photo 8. Photo taken on October 17, 2019 from the tank battery location. Photo illustrates a Blue grama (*Bouteloua gracilis*) grass species. Based on a qualitative assessment, this species was most commonly found grass species throughout the tank battery location. The next most abundant grass species were Western wheatgrass (*Pascopyrum smithii*) and Slender wheatgrass (*Elymus trachycaulus*). None of these grass species were a part of the Equestrian Grass Mix.

Inspection Photos

Location Name: LOVELY-66N66W /9SESW

Location ID: 323189



Photo 9. Photo taken on October 17, 2019 from the tank battery location illustrating more Blue grama (*Bouteloua gracilis*) grass species.



Photo 10. Photo taken on October 17, 2019 from the southeastern tank battery location illustrating compaction and a lack of vegetative growth. Photo illustrates COGCC staff could not penetrate the shovel more than a few inches. Operator will have to remove this material anyways as the Operator has failed to properly grade and recontour the location. COGCC staff also performed a compaction test in the reference area and did not observe the same compaction issue.



Photo 11. Photo taken from the Weld County Property Portal database. Please note the property where the culvert that remains (see Photo #3) is owned by the Cattail Creek HOA.