

WELL LOCATION CERTIFICATE

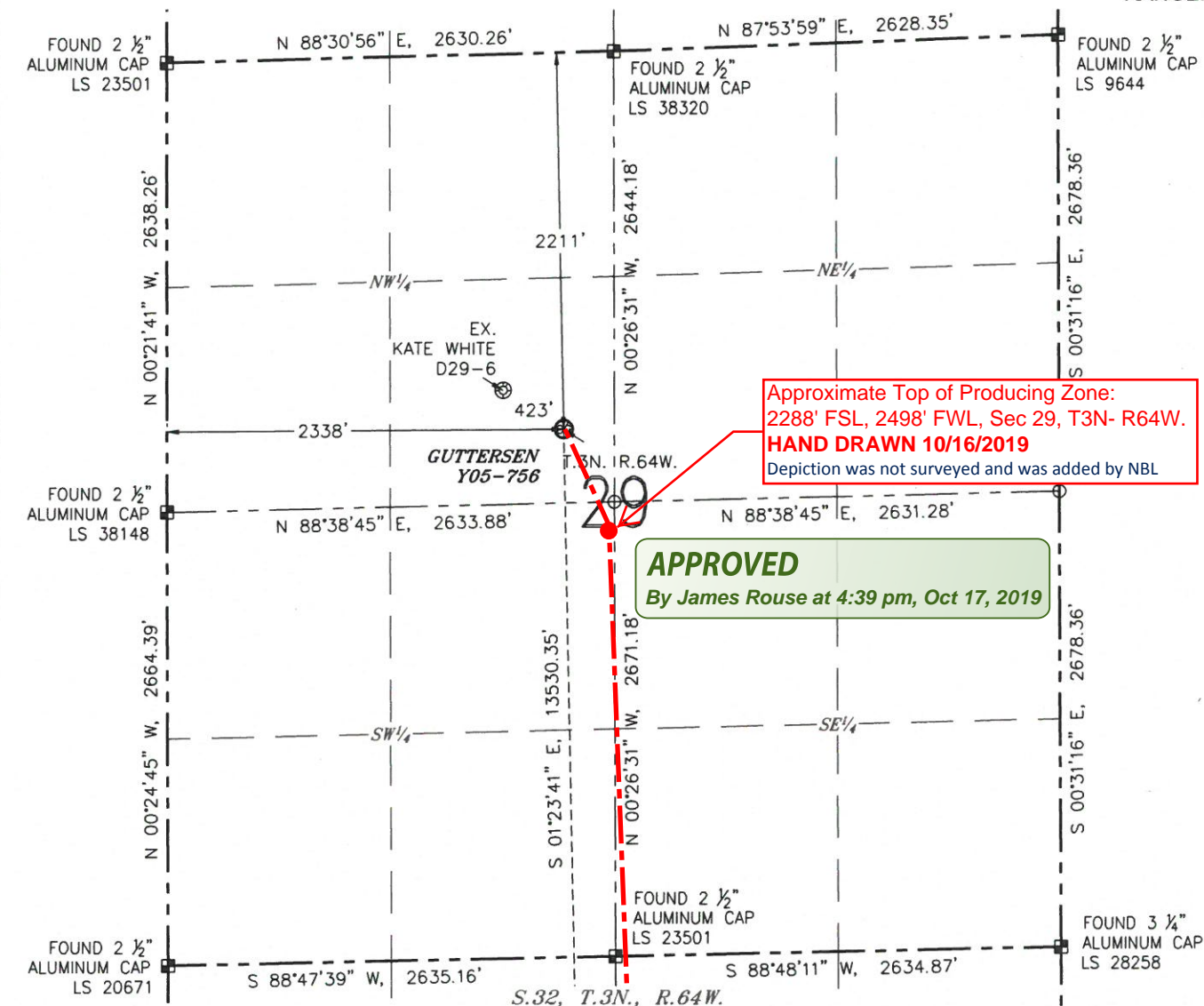
GUTTERSEN Y05-756

(SHEET 1 OF 3)

SECTION: 29

TOWNSHIP: 3N

RANGE: 64W



Approximate Top of Producing Zone:
2288' FSL, 2498' FWL, Sec 29, T3N- R64W.
HAND DRAWN 10/16/2019
Depiction was not surveyed and was added by NBL

APPROVED

By James Rouse at 4:39 pm, Oct 17, 2019

NOTES:

1. BEARINGS ARE GRID BEARINGS OF THE COLORADO STATE PLANE COORDINATE SYSTEM, NORTH ZONE, NAD 83. THE LINEAL DIMENSIONS SHOWN HEREON ARE BASED UPON THE "U.S. SURVEY FOOT".
2. GROUND ELEVATIONS ARE BASED UPON NGS OPUS SOLUTION NAVD 88 DATUM COMPUTED USING GEOID09.
3. IMPROVEMENTS: SEE LOCATION DRAWING FOR ALL VISIBLE IMPROVEMENTS WITHIN 500' OF THE DISTURBED AREA.
4. SURFACE USE: RANGELAND.
5. INSTRUMENT OPERATOR: JASON DOW-PETERSON.
6. THE NEAREST EXISTING WELL: KATE WHITE D29-6, 423' NW.

IN ACCORDANCE WITH A REQUEST FROM MATT CAMPBELL WITH NOBLE ENERGY INC., R&R ENGINEERS-SURVEYORS, INC. HAS DETERMINED THE SURFACE HOLE LOCATION OF THE GUTTERSEN Y05-756 WELL TO BE 2211' FROM THE NORTH LINE AND 2338' FROM THE WEST LINE AS MEASURED AT RIGHT ANGLES FROM THE SECTION LINES OF SECTION 29, TOWNSHIP 3 NORTH, RANGE 64 WEST, AND THE BOTTOM HOLE LOCATION TO BE 75' FROM THE SOUTH LINE AND 2552' FROM THE WEST LINE AS MEASURED AT RIGHT ANGLES FROM THE SECTION LINES OF SECTION 5, TOWNSHIP 2 NORTH, RANGE 64 WEST OF THE 6TH PRINCIPAL MERIDIAN, WELD COUNTY, COLORADO.

I HEREBY CERTIFY THAT THIS WELL LOCATION CERTIFICATE WAS PREPARED BY ME, OR UNDER MY DIRECT SUPERVISION, THAT THE FIELD WORK WAS COMPLETED ON 02/21/2018, FOR AND ON BEHALF OF NOBLE ENERGY INC., THAT IT IS NOT A LAND SURVEY PLAT OR AN IMPROVEMENT SURVEY PLAT, AND THAT IT IS NOT TO BE RELIED UPON FOR ESTABLISHMENT OF FENCES, BUILDINGS, OR OTHER FUTURE IMPROVEMENT LINES.

SURFACE HOLE LOCATION

LATITUDE: N 40.19748°
LONGITUDE: W 104.57621°
PDOP: 1.4
ELEVATION: 4780'
¼-¼: SE¼NW¼

BOTTOM HOLE LOCATION

LATITUDE: N 40.16034°
LONGITUDE: W 104.57553°

LEGEND

- ⊗ PROPOSED WELL
- ⊙ EXISTING WELL
- ⊙ BOTTOM HOLE
- ⊙ FOUND MONUMENT
- CALCULATED POSITION



0 1000'
SCALE: 1" = 1000'



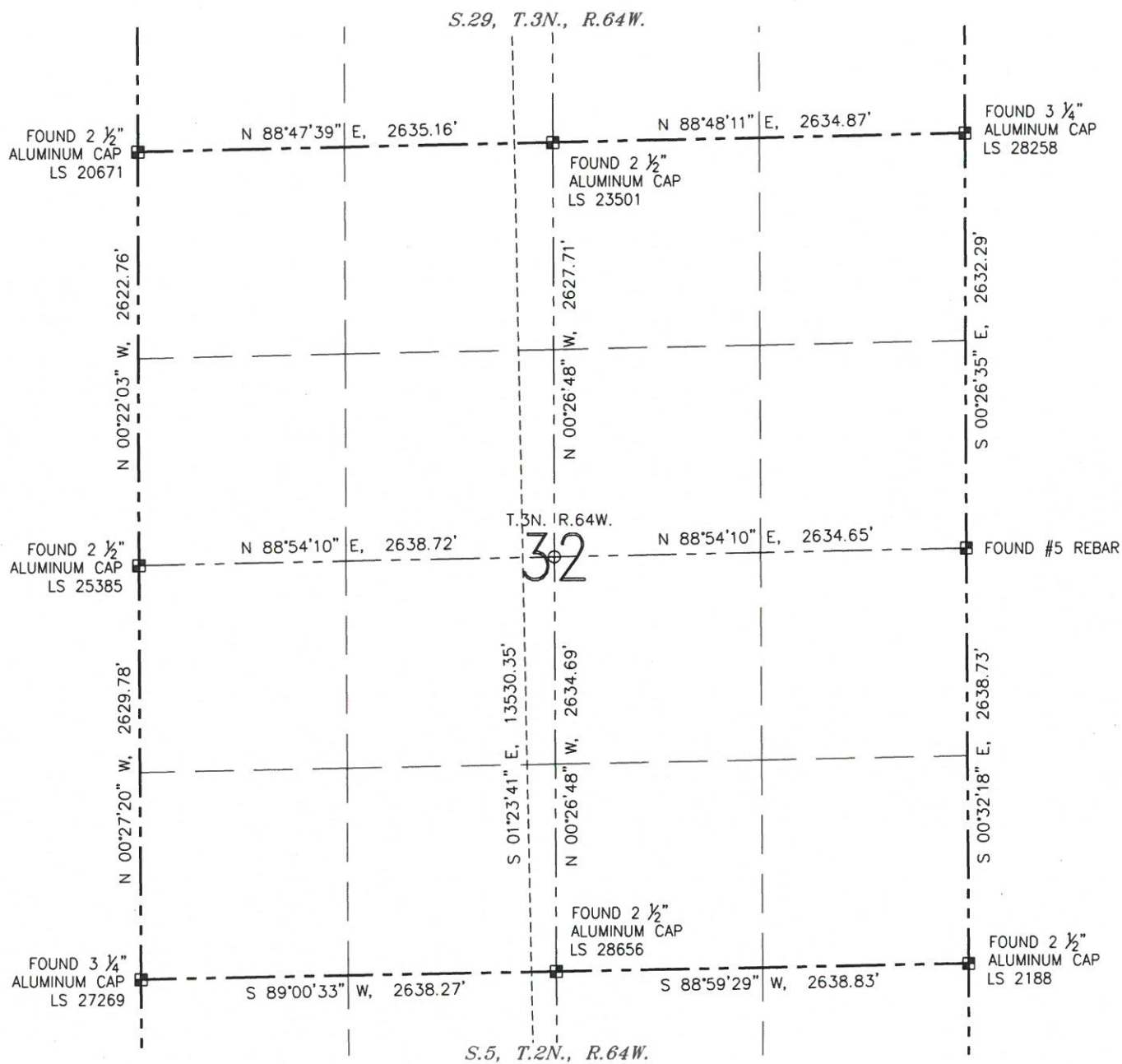
MEASURED FROM THE	BUILDING	BUILDING UNIT	HIGH OCCUPANCY BUILDING UNIT	DESIGNATED OUTSIDE ACTIVITY AREA	PUBLIC ROAD	ABOVEGROUND UTILITY	RAILROAD	PROPERTY LINE
PROPOSED WELLHEAD	4977' SW	5280'±	5280'+	5280'+	5280'±	2266' NE	5280'+	2211' N

STACY LYNN BALZER, PLS 38495
FOR AND ON BEHALF OF R&R ENGINEERS-SURVEYORS, INC. DATE: 03/15/2018
JOB #: NE17302

WELL LOCATION CERTIFICATE

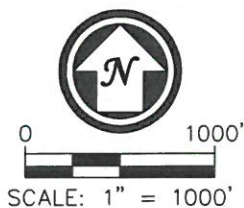
GUTTERSEN Y05-756

(SHEET 2 OF 3)

SECTION: 29
TOWNSHIP: 3N
RANGE: 64W

LEGEND

- ⊗ PROPOSED WELL
- ⊙ EXISTING WELL
- ⊙ BOTTOM HOLE
- ⊠ FOUND MONUMENT
- CALCULATED POSITION



WELL LOCATION CERTIFICATE

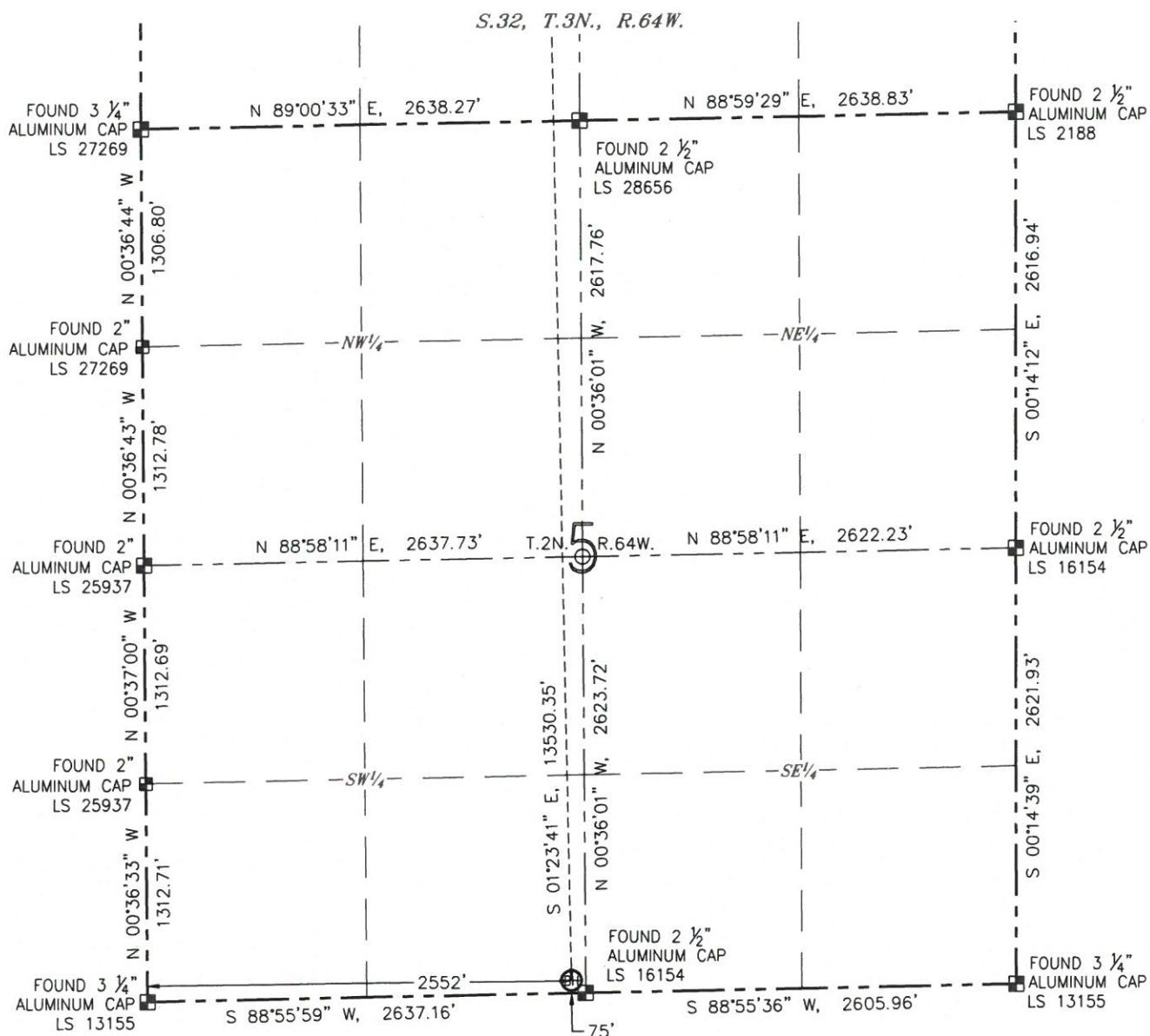
GUTTERSEN Y05-756

(SHEET 3 OF 3)






SECTION: 29

TOWNSHIP: 3N

RANGE: 64W



LEGEND

-  PROPOSED WELL
 EXISTING WELL
 BOTTOM HOLE
 FOUND MONUMENT
 CALCULATED POSITION



A horizontal scale bar with alternating black and white segments. It is labeled '0' at the left end and '1000' at the right end, indicating a distance of 1000 feet.

SCALE: 1" = 1000'

DATE: 03/15/2018
JOB #: NE17302