

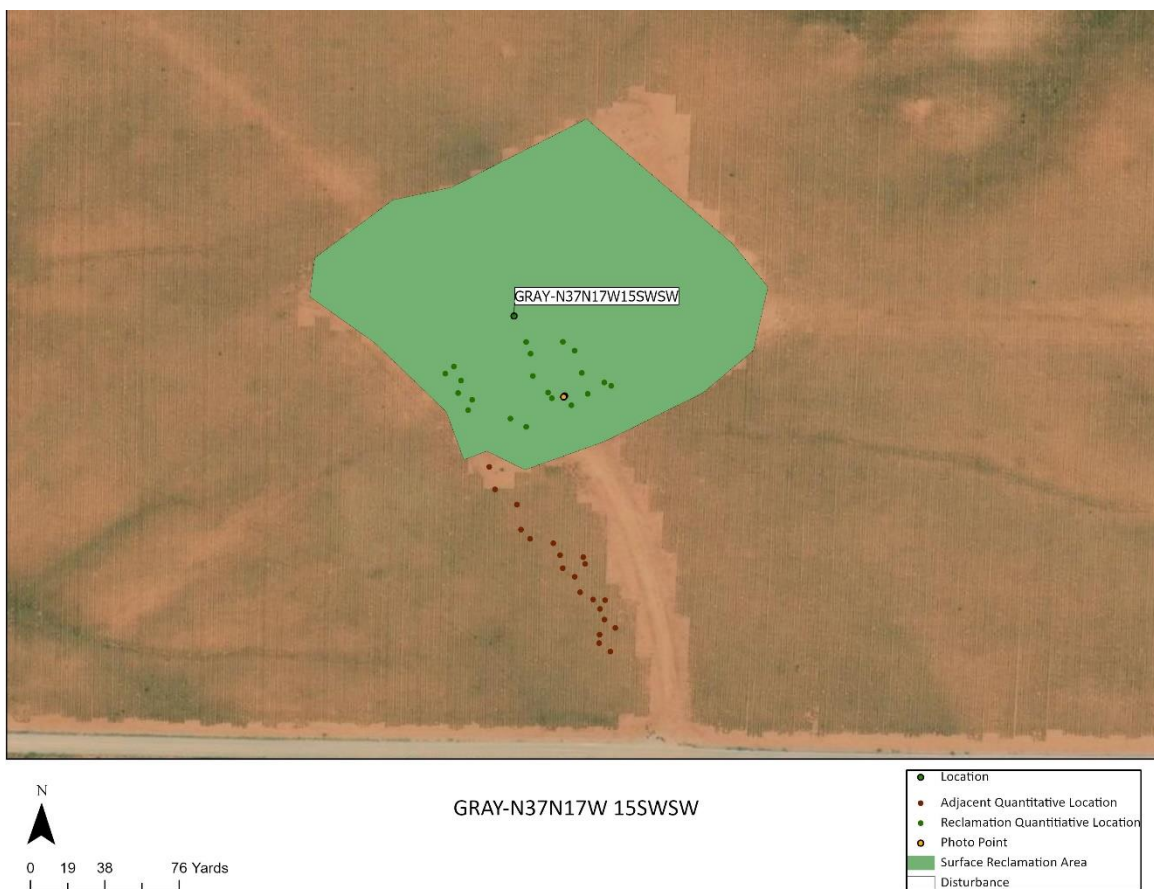
GRAY-N37N17W 15SWSW Sundry Notice Supplement

PURPOSE

This document supplements the Form 4 Sundry notice submitted on the COGCC e-form system by High Point Resources (HPR) GRAY-N37N17W 15SWSW, subsequently referred to as the reclamation site. This document provides information on qualitative and quantitative monitoring and results of the final reclamation effort. This document also provides justification for the Form 4 request for inspection and release of HPR from further obligation at the reclamation site.

FINAL RECLAMATION PROCEDURE

Each year the pad is qualitatively monitored to determine if areas need weed spraying, additional seeding, or soil amendments. When the pad visually appears to meet the objectives for reclamation success, a request for final reclamation release will be filed with the COGCC.



Map 1 Showing Location Disturbance Extent

QUALITATIVE MONITORING METHODS

Qualitative monitoring was performed in the spring of 2019 at the reclamation site. Qualitative monitoring consists of capturing reclamation and reference site photos and inspecting the reclamation site in order to determine the reclamation activities appropriate to satisfy COGCC rule requirements (Map 1). The GPS coordinates of the photo point are 37.45803 N, -108.71672 W.

Landscape photos are captured at each sampling event in the north, east, south and west directions at each photo point on the reclamation site. A landscape photo of the reference site is also captured.

QUALITATIVE OBSERVATIONS

The most recent qualitative sampling occurred on May 16, 2019. Photographs of the sampling events are included in Appendix A. The site was observed to be in good condition with little to no differences in hay production compared to off-site. There are some sparse areas compared to off-site, however these are minimal and should improve with time.

QUANTITATIVE MONITORING METHODS

For Crop land, quantitative monitoring effort consisted of sampling 20 randomly placed 1 m² quadrats for plant density on-site and repeating the same procedure in an adjacent non-disturbed area. The mean on-site density is then compared to the off-site density resulting in a ratio showing the relative on-site density to off-site density.

The points used where quadrats were placed can be seen above in Map 1.

QUANTITATIVE OBSERVATIONS

	Mean Density (# plants/meter)
On-Site	242.4
Adjacent	293.7
On-site/Adjacent	0.83

CONCLUSION

Pad GRAY-N37N17W 15SWSW should meet the final reclamation requirements due to plant density closely matching the adjacent area, and reclamation area showing no significant unrestored subsidence as required by COGCC regulation.

Location Name: GRAY-N37N17W 15SWSW
COGCC ID: 313626
API #: 05-083-06651

APPENDIX A RECLAMATION SITE PHOTOS

Spring Qualitative Sampling

Photo 1. North facing



Photo 2. East facing



Photo 3. South facing



Photo 4. West facing



Location Name: GRAY-N37N17W 15SWSW

COGCC ID: 313626

API #: 05-083-06651

Reference Photo from Fall Qualitative Sampling

A reference site photo was captured on the N of the reclamation.

