

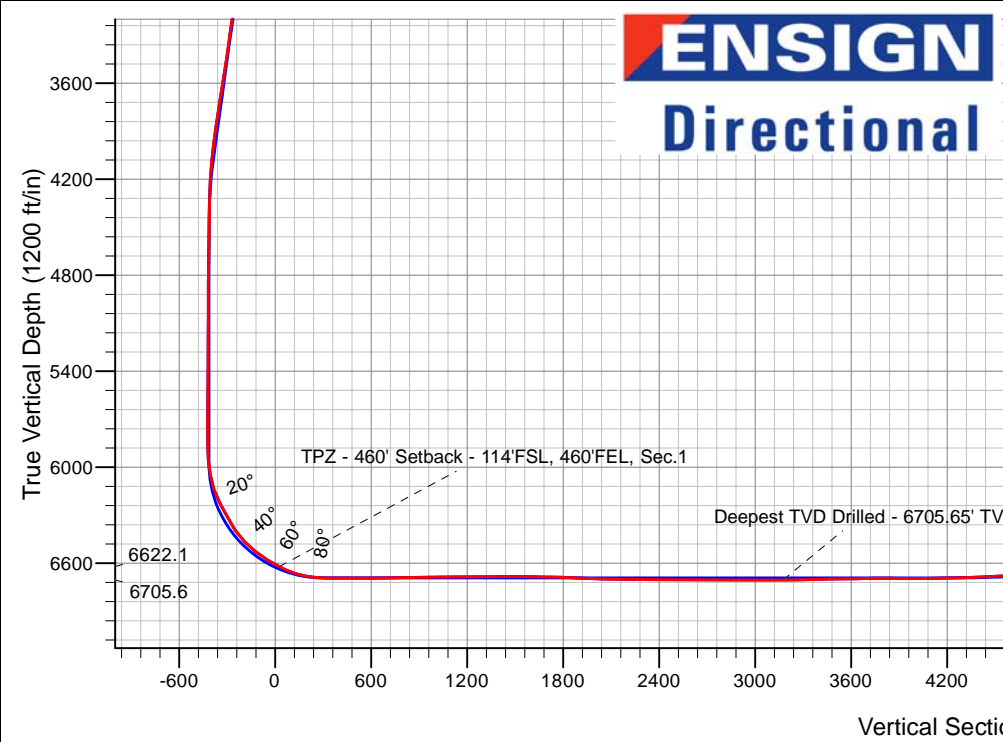
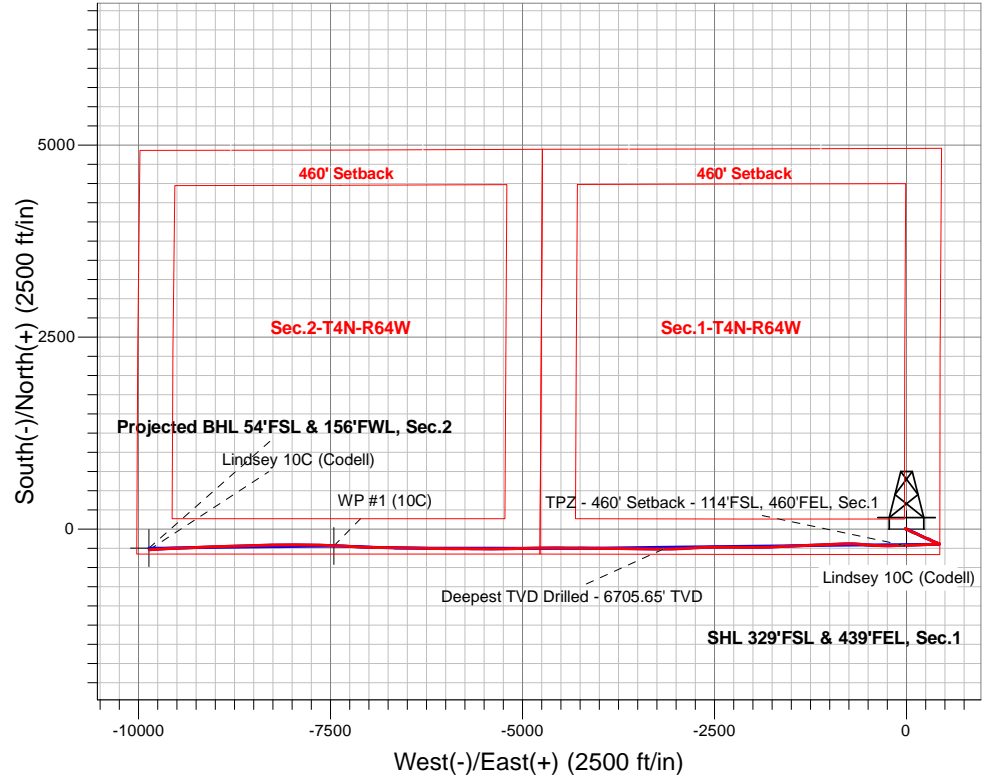
# PDC Energy Inc. DJ Basin

Well Name: **Lindsey 10C (Codell)**

Surface Location: Lindsey 4N64W01 Pad Sec.1-T4N-R64W  
 North American Datum 1983 , US State Plane 1983, Colorado Northern Zone  
 Ground Elevation: 4610.0  
 +N/-S +E/-W Northing Easting Latitude Longitude Slot  
 0.0 0.0 1366506.583281238.21 40.335070 -104.491150  
 RKB - 23' WELL @ 4633.0ft (RKB - 23')

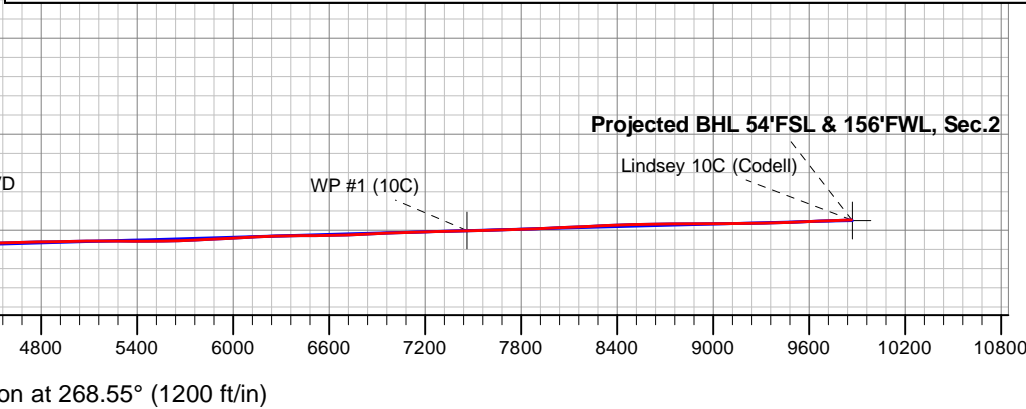
## FINAL SURVEY

**Projected Bottom Hole Location**  
**16,691'MD 6537'TVD 270'S & 9861'W of SHL**  
**92.13 degree Incl @ 266.34 degree AZM**



Lindsey 4N64W01 Pad Sec.1-T4N-R64W Lindsey 10C (Codell) Lindsey 10C Wellbore #1 10:30, June 11 2019	ANNOTATIONS		
	TVD	MD	Annotation
	6622.1	6831.3	TPZ - 460' Setback - 114'FSL, 460'FEL, Sec.1
	6705.6	9993.0	Deepest TVD Drilled - 6705.65' TVD

LEGEND	
	Lindsey 10C (Codell), Lindsey 10C Wellbore #1, Plan #3 (5-13-19) V0
	Lindsey 10C Wellbore #1
	Survey #1





## **PDC Energy Inc. DJ Basin**

**SEC.1-T4N-R64W**

**Lindsey 4N64W01 Pad Sec.1-T4N-R64W**

**Lindsey 10C (Codell)**

**Lindsey 10C Wellbore #1**

**Survey: Survey #1**

## **Standard Survey Report**

**11 June, 2019**



<b>Company:</b>	PDC Energy Inc. DJ Basin	<b>Local Co-ordinate Reference:</b>	Well Lindsey 10C (Codell)
<b>Project:</b>	SEC.1-T4N-R64W	<b>TVD Reference:</b>	WELL @ 4633.0ft (RKB - 23')
<b>Site:</b>	Lindsey 4N64W01 Pad Sec.1-T4N-R64W	<b>MD Reference:</b>	WELL @ 4633.0ft (RKB - 23')
<b>Well:</b>	Lindsey 10C (Codell)	<b>North Reference:</b>	True
<b>Wellbore:</b>	Lindsey 10C Wellbore #1	<b>Survey Calculation Method:</b>	Minimum Curvature
<b>Design:</b>	Lindsey 10C Wellbore #1	<b>Database:</b>	US_EDM

<b>Project</b>	SEC.1-T4N-R64W, Weld County, CO		
<b>Map System:</b>	US State Plane 1983	<b>System Datum:</b>	Mean Sea Level
<b>Geo Datum:</b>	North American Datum 1983		Using Well Reference Point
<b>Map Zone:</b>	Colorado Northern Zone		Using geodetic scale factor

<b>Site</b>	Lindsey 4N64W01 Pad Sec.1-T4N-R64W				
<b>Site Position:</b>		<b>Northing:</b>	1,366,539.38 usft	<b>Latitude:</b>	40.335160
<b>From:</b>	Lat/Long	<b>Easting:</b>	3,281,237.84 usft	<b>Longitude:</b>	-104.491150
<b>Position Uncertainty:</b>	0.0 ft	<b>Slot Radius:</b>	13-3/16 "	<b>Grid Convergence:</b>	0.65 °

<b>Well</b>	Lindsey 10C (Codell)					
<b>Well Position</b>	<b>+N/-S</b>	0.0 ft	<b>Northing:</b>	1,366,506.58 usft	<b>Latitude:</b>	40.335070
	<b>+E/-W</b>	0.0 ft	<b>Easting:</b>	3,281,238.22 usft	<b>Longitude:</b>	-104.491150
<b>Position Uncertainty</b>		0.0 ft	<b>Wellhead Elevation:</b>	0.0 ft	<b>Ground Level:</b>	4,610.0 ft

<b>Wellbore</b>	Lindsey 10C Wellbore #1				
<b>Magnetics</b>	<b>Model Name</b>	<b>Sample Date</b>	<b>Declination (°)</b>	<b>Dip Angle (°)</b>	<b>Field Strength (nT)</b>
	HDGM	4/26/2019	8.10	66.88	52,168

<b>Design</b>	Lindsey 10C Wellbore #1				
<b>Audit Notes:</b>					
<b>Version:</b>	1.0	<b>Phase:</b>	ACTUAL	<b>Tie On Depth:</b>	0.0
<b>Vertical Section:</b>	<b>Depth From (TVD) (ft)</b>	<b>+N/-S (ft)</b>	<b>+E/-W (ft)</b>	<b>Direction (°)</b>	
	0.0	0.0	0.0	268.55	

<b>Survey Program</b>	<b>Date</b>	6/11/2019			
<b>From (ft)</b>	<b>To (ft)</b>	<b>Survey (Wellbore)</b>	<b>Tool Name</b>	<b>Description</b>	
157.0	16,691.0	Survey #1 (Lindsey 10C Wellbore #1)	MWD	MWD - Standard	

<b>Survey</b>										
<b>Measured Depth (ft)</b>	<b>Inclination (°)</b>	<b>Azimuth (°)</b>	<b>Vertical Depth (ft)</b>	<b>+N/-S (ft)</b>	<b>+E/-W (ft)</b>	<b>Vertical Section (ft)</b>	<b>Dogleg Rate (°/100usft)</b>	<b>Build Rate (°/100usft)</b>	<b>Turn Rate (°/100usft)</b>	
0.0	0.00	0.00	0.0	0.0	0.0	0.0	0.00	0.00	0.00	
1.0	0.01	269.41	1.0	0.0	0.0	0.0	0.73	0.73	0.00	
<b>SHL 329°FSL &amp; 439°FEL, Sec.1</b>										
157.0	1.14	269.41	157.0	0.0	-1.6	1.6	0.73	0.73	0.00	
253.0	1.32	292.91	253.0	0.4	-3.5	3.5	0.55	0.19	24.48	
349.0	1.02	298.93	348.9	1.2	-5.3	5.3	0.34	-0.31	6.27	
445.0	1.11	302.79	444.9	2.2	-6.8	6.8	0.12	0.09	4.02	
540.0	0.84	312.18	539.9	3.1	-8.1	8.0	0.33	-0.28	9.88	
636.0	1.20	294.68	635.9	4.0	-9.6	9.5	0.49	0.38	-18.23	
732.0	1.35	297.66	731.9	5.0	-11.5	11.3	0.17	0.16	3.10	
828.0	1.35	297.66	827.9	6.0	-13.5	13.3	0.00	0.00	0.00	

<b>Company:</b>	PDC Energy Inc. DJ Basin	<b>Local Co-ordinate Reference:</b>	Well Lindsey 10C (Codell)
<b>Project:</b>	SEC.1-T4N-R64W	<b>TVD Reference:</b>	WELL @ 4633.0ft (RKB - 23')
<b>Site:</b>	Lindsey 4N64W01 Pad Sec.1-T4N-R64W	<b>MD Reference:</b>	WELL @ 4633.0ft (RKB - 23')
<b>Well:</b>	Lindsey 10C (Codell)	<b>North Reference:</b>	True
<b>Wellbore:</b>	Lindsey 10C Wellbore #1	<b>Survey Calculation Method:</b>	Minimum Curvature
<b>Design:</b>	Lindsey 10C Wellbore #1	<b>Database:</b>	US_EDM

Survey										
Measured Depth (ft)	Inclination (°)	Azimuth (°)	Vertical Depth (ft)	+N/-S (ft)	+E/-W (ft)	Vertical Section (ft)	Dogleg Rate (°/100usft)	Build Rate (°/100usft)	Turn Rate (°/100usft)	
924.0	0.41	246.72	923.8	6.4	-14.8	14.6	1.18	-0.98	-53.06	
1,020.0	0.96	157.92	1,019.8	5.5	-14.8	14.7	1.08	0.57	-92.50	
1,116.0	0.94	140.73	1,115.8	4.2	-14.0	13.9	0.30	-0.02	-17.91	
1,212.0	1.78	120.24	1,211.8	2.8	-12.2	12.1	1.00	0.88	-21.34	
1,307.0	3.66	110.19	1,306.7	1.0	-8.1	8.1	2.03	1.98	-10.58	
1,403.0	5.76	112.29	1,402.4	-1.9	-0.8	0.8	2.19	2.19	2.19	
1,499.0	7.04	113.78	1,497.8	-6.1	9.1	-8.9	1.34	1.33	1.55	
1,594.0	8.29	117.42	1,591.9	-11.6	20.5	-20.2	1.41	1.32	3.83	
1,687.0	9.59	120.75	1,683.8	-18.6	33.1	-32.6	1.50	1.40	3.58	
1,781.0	9.41	118.70	1,776.5	-26.3	46.6	-45.9	0.41	-0.19	-2.18	
1,877.0	9.18	117.46	1,871.2	-33.6	60.2	-59.4	0.32	-0.24	-1.29	
1,973.0	8.96	110.22	1,966.0	-39.7	74.1	-73.0	1.21	-0.23	-7.54	
2,164.0	9.20	109.72	2,154.6	-50.0	102.4	-101.1	0.13	0.13	-0.26	
2,260.0	9.20	109.69	2,249.4	-55.2	116.8	-115.4	0.00	0.00	-0.03	
2,356.0	10.40	118.12	2,344.0	-61.9	131.7	-130.1	1.95	1.25	8.78	
2,452.0	9.87	114.01	2,438.5	-69.3	146.9	-145.1	0.93	-0.55	-4.28	
2,547.0	11.18	118.43	2,531.9	-77.0	162.4	-160.4	1.62	1.38	4.65	
2,643.0	11.10	117.07	2,626.1	-85.6	178.8	-176.6	0.29	-0.08	-1.42	
2,740.0	10.76	116.15	2,721.3	-93.9	195.3	-192.8	0.39	-0.35	-0.95	
2,835.0	10.11	115.35	2,814.8	-101.3	210.8	-208.1	0.70	-0.68	-0.84	
2,931.0	9.61	112.60	2,909.3	-108.0	225.8	-223.0	0.72	-0.52	-2.86	
3,027.0	10.42	115.51	3,003.9	-114.9	241.0	-238.0	0.99	0.84	3.03	
3,123.0	10.52	109.22	3,098.3	-121.5	257.1	-254.0	1.19	0.10	-6.55	
3,219.0	8.51	109.48	3,193.0	-126.7	272.1	-268.8	2.09	-2.09	0.27	
3,314.0	7.73	106.31	3,287.0	-130.9	284.8	-281.4	0.95	-0.82	-3.34	
3,410.0	9.36	116.54	3,381.9	-136.2	298.0	-294.5	2.32	1.70	10.66	
3,505.0	9.43	116.23	3,475.7	-143.1	311.9	-308.2	0.09	0.07	-0.33	
3,600.0	9.69	116.25	3,569.4	-150.0	326.1	-322.2	0.27	0.27	0.02	
3,695.0	9.80	115.28	3,663.0	-157.0	340.5	-336.5	0.21	0.12	-1.02	
3,791.0	9.92	114.08	3,757.6	-163.9	355.5	-351.2	0.25	0.13	-1.25	
3,887.0	8.99	113.06	3,852.3	-170.2	369.9	-365.5	0.98	-0.97	-1.06	
3,982.0	8.88	111.66	3,946.1	-175.8	383.6	-379.0	0.26	-0.12	-1.47	
4,078.0	7.11	111.74	4,041.2	-180.7	396.0	-391.3	1.84	-1.84	0.08	
4,174.0	4.94	113.80	4,136.6	-184.6	405.3	-400.5	2.27	-2.26	2.15	
4,269.0	2.88	117.84	4,231.4	-187.4	411.1	-406.3	2.19	-2.17	4.25	
4,364.0	0.44	124.11	4,326.4	-188.7	413.6	-408.7	2.57	-2.57	6.60	
4,459.0	0.89	77.62	4,421.4	-188.8	414.6	-409.7	0.70	0.47	-48.94	
4,555.0	1.25	70.04	4,517.3	-188.2	416.3	-411.4	0.40	0.38	-7.90	
4,651.0	1.19	89.49	4,613.3	-187.9	418.3	-413.4	0.43	-0.06	20.26	
4,746.0	0.73	88.95	4,708.3	-187.8	419.9	-415.0	0.48	-0.48	-0.57	
4,842.0	0.64	89.85	4,804.3	-187.8	421.0	-416.1	0.09	-0.09	0.94	
4,937.0	0.49	88.79	4,899.3	-187.8	421.9	-417.1	0.16	-0.16	-1.12	
5,033.0	0.42	161.05	4,995.3	-188.1	422.5	-417.6	0.56	-0.07	75.27	

<b>Company:</b>	PDC Energy Inc. DJ Basin	<b>Local Co-ordinate Reference:</b>	Well Lindsey 10C (Codell)
<b>Project:</b>	SEC.1-T4N-R64W	<b>TVD Reference:</b>	WELL @ 4633.0ft (RKB - 23')
<b>Site:</b>	Lindsey 4N64W01 Pad Sec.1-T4N-R64W	<b>MD Reference:</b>	WELL @ 4633.0ft (RKB - 23')
<b>Well:</b>	Lindsey 10C (Codell)	<b>North Reference:</b>	True
<b>Wellbore:</b>	Lindsey 10C Wellbore #1	<b>Survey Calculation Method:</b>	Minimum Curvature
<b>Design:</b>	Lindsey 10C Wellbore #1	<b>Database:</b>	US_EDM

Survey										
Measured Depth (ft)	Inclination (°)	Azimuth (°)	Vertical Depth (ft)	+N/-S (ft)	+E/-W (ft)	Vertical Section (ft)	Dogleg Rate (°/100usft)	Build Rate (°/100usft)	Turn Rate (°/100usft)	
5,128.0	0.39	124.11	5,090.3	-188.7	422.9	-417.9	0.27	-0.03	-38.88	
5,223.0	0.46	131.33	5,185.3	-189.1	423.4	-418.5	0.09	0.07	7.60	
5,319.0	0.63	134.01	5,281.3	-189.7	424.1	-419.1	0.18	0.18	2.79	
5,415.0	0.81	162.59	5,377.3	-190.7	424.7	-419.7	0.41	0.19	29.77	
5,511.0	0.89	163.00	5,473.3	-192.1	425.1	-420.1	0.08	0.08	0.43	
5,607.0	0.97	163.70	5,569.2	-193.6	425.5	-420.5	0.08	0.08	0.73	
5,703.0	1.26	173.42	5,665.2	-195.4	425.9	-420.8	0.36	0.30	10.13	
5,799.0	1.09	179.30	5,761.2	-197.4	426.0	-420.9	0.22	-0.18	6.13	
5,895.0	0.77	175.34	5,857.2	-198.9	426.1	-420.9	0.34	-0.33	-4.13	
5,991.0	4.15	265.67	5,953.1	-199.8	422.7	-417.5	4.40	3.52	94.09	
6,086.0	9.96	277.06	6,047.4	-199.1	411.1	-405.9	6.26	6.12	11.99	
6,181.0	19.07	270.37	6,139.2	-198.0	387.3	-382.2	9.73	9.59	-7.04	
6,277.0	28.40	271.01	6,227.0	-197.5	348.7	-343.6	9.72	9.72	0.67	
6,372.0	28.17	269.18	6,310.7	-197.4	303.7	-298.7	0.94	-0.24	-1.93	
6,468.0	32.09	269.37	6,393.7	-198.0	255.6	-250.5	4.08	4.08	0.20	
6,563.0	46.00	265.49	6,467.3	-201.0	196.0	-190.8	14.86	14.64	-4.08	
6,658.0	51.03	265.16	6,530.2	-206.8	125.1	-119.8	5.30	5.29	-0.35	
6,753.0	59.72	266.82	6,584.1	-212.2	47.1	-41.8	9.26	9.15	1.75	
6,831.3	62.34	267.36	6,622.1	-215.7	-21.3	26.7	3.40	3.34	0.69	
<b>TPZ - 460' Setback - 114'FSL, 460'FEL, Sec.1</b>										
6,849.0	62.93	267.48	6,630.2	-216.4	-37.0	42.4	3.40	3.35	0.67	
6,944.0	72.69	268.45	6,666.0	-219.5	-124.8	130.3	10.32	10.27	1.02	
7,040.0	83.24	271.32	6,686.0	-219.6	-218.5	224.0	11.37	10.99	2.99	
7,120.7	88.12	273.17	6,692.1	-216.4	-298.9	304.2	6.47	6.05	2.30	
<b>LPL 125'FSL &amp; 737'FEL, Sec.1</b>										
7,135.0	88.99	273.50	6,692.5	-215.6	-313.2	318.5	6.47	6.05	2.28	
7,231.0	89.42	272.55	6,693.8	-210.5	-409.0	414.2	1.09	0.45	-0.99	
7,326.0	89.87	274.81	6,694.4	-204.4	-503.8	508.8	2.43	0.47	2.38	
7,422.0	90.55	272.59	6,694.0	-198.2	-599.6	604.4	2.42	0.71	-2.31	
7,517.0	91.39	272.99	6,692.4	-193.6	-694.5	699.2	0.98	0.88	0.42	
7,613.0	90.90	268.45	6,690.5	-192.4	-790.4	795.0	4.76	-0.51	-4.73	
7,708.0	90.62	267.95	6,689.2	-195.4	-885.4	890.0	0.60	-0.29	-0.53	
7,804.0	90.69	267.47	6,688.1	-199.2	-981.3	986.0	0.51	0.07	-0.50	
7,899.0	90.97	267.01	6,686.8	-203.8	-1,076.2	1,081.0	0.57	0.29	-0.48	
7,995.0	91.13	266.65	6,685.0	-209.1	-1,172.0	1,176.9	0.41	0.17	-0.38	
8,091.0	89.42	269.07	6,684.6	-212.7	-1,267.9	1,272.9	3.09	-1.78	2.52	
8,186.0	89.82	268.57	6,685.2	-214.7	-1,362.9	1,367.9	0.67	0.42	-0.53	
8,365.0	89.68	266.62	6,686.0	-222.2	-1,541.7	1,546.9	1.09	-0.08	-1.09	
8,461.0	90.74	266.86	6,685.6	-227.6	-1,637.6	1,642.8	1.13	1.10	0.25	
8,557.0	87.85	267.17	6,686.8	-232.6	-1,733.4	1,738.8	3.03	-3.01	0.32	
8,653.0	87.45	269.11	6,690.7	-235.7	-1,829.3	1,834.7	2.06	-0.42	2.02	
8,749.0	87.57	269.02	6,694.9	-237.3	-1,925.2	1,930.6	0.16	0.13	-0.09	
8,844.0	88.08	268.75	6,698.5	-239.2	-2,020.1	2,025.5	0.61	0.54	-0.28	
8,940.0	89.45	271.06	6,700.6	-239.3	-2,116.1	2,121.4	2.80	1.43	2.41	

<b>Company:</b>	PDC Energy Inc. DJ Basin	<b>Local Co-ordinate Reference:</b>	Well Lindsey 10C (Codell)
<b>Project:</b>	SEC.1-T4N-R64W	<b>TVD Reference:</b>	WELL @ 4633.0ft (RKB - 23')
<b>Site:</b>	Lindsey 4N64W01 Pad Sec.1-T4N-R64W	<b>MD Reference:</b>	WELL @ 4633.0ft (RKB - 23')
<b>Well:</b>	Lindsey 10C (Codell)	<b>North Reference:</b>	True
<b>Wellbore:</b>	Lindsey 10C Wellbore #1	<b>Survey Calculation Method:</b>	Minimum Curvature
<b>Design:</b>	Lindsey 10C Wellbore #1	<b>Database:</b>	US_EDM

Survey									
Measured Depth (ft)	Inclination (°)	Azimuth (°)	Vertical Depth (ft)	+N/-S (ft)	+E/-W (ft)	Vertical Section (ft)	Dogleg Rate (°/100usft)	Build Rate (°/100usft)	Turn Rate (°/100usft)
9,036.0	89.55	270.94	6,701.4	-237.6	-2,212.1	2,217.4	0.16	0.10	-0.13
9,132.0	89.52	270.72	6,702.2	-236.2	-2,308.0	2,313.3	0.23	-0.03	-0.23
9,228.0	89.21	270.04	6,703.3	-235.6	-2,404.0	2,409.2	0.78	-0.32	-0.71
9,324.0	89.26	269.49	6,704.5	-236.0	-2,500.0	2,505.2	0.58	0.05	-0.57
9,420.0	90.01	268.50	6,705.1	-237.7	-2,596.0	2,601.2	1.29	0.78	-1.03
9,515.0	90.00	267.06	6,705.1	-241.4	-2,690.9	2,696.2	1.52	-0.01	-1.52
9,611.0	89.71	265.77	6,705.4	-247.4	-2,786.7	2,792.1	1.38	-0.30	-1.34
9,707.0	90.16	267.10	6,705.5	-253.3	-2,882.6	2,888.0	1.46	0.47	1.39
9,802.0	90.29	269.30	6,705.1	-256.3	-2,977.5	2,983.0	2.32	0.14	2.32
9,897.0	89.70	267.90	6,705.1	-258.6	-3,072.5	3,078.0	1.60	-0.62	-1.47
9,993.0	89.68	269.55	6,705.6	-260.8	-3,168.4	3,174.0	1.72	-0.02	1.72
<b>Deepest TVD Drilled - 6705.65' TVD</b>									
10,088.0	91.45	271.58	6,704.7	-259.8	-3,263.4	3,268.9	2.83	1.86	2.14
10,184.0	91.27	270.14	6,702.4	-258.4	-3,359.4	3,364.8	1.51	-0.19	-1.50
10,280.0	91.83	270.07	6,699.8	-258.2	-3,455.3	3,460.8	0.59	0.58	-0.07
10,376.0	90.24	270.74	6,698.1	-257.6	-3,551.3	3,556.7	1.80	-1.66	0.70
10,472.0	90.71	270.55	6,697.3	-256.5	-3,647.3	3,652.6	0.53	0.49	-0.20
10,568.0	91.43	270.64	6,695.5	-255.5	-3,743.3	3,748.6	0.76	0.75	0.09
10,664.0	89.22	271.01	6,695.0	-254.1	-3,839.3	3,844.5	2.33	-2.30	0.39
10,760.0	89.76	270.95	6,695.8	-252.4	-3,935.3	3,940.4	0.57	0.56	-0.06
10,856.0	90.30	270.74	6,695.8	-251.0	-4,031.2	4,036.3	0.60	0.56	-0.22
10,951.0	90.77	270.67	6,694.9	-249.9	-4,126.2	4,131.2	0.50	0.49	-0.07
11,047.0	91.41	270.63	6,693.1	-248.8	-4,222.2	4,227.1	0.67	0.67	-0.04
11,143.0	92.17	270.52	6,690.1	-247.8	-4,318.2	4,323.0	0.80	0.79	-0.11
11,239.0	92.57	270.45	6,686.1	-247.0	-4,414.1	4,418.9	0.42	0.42	-0.07
11,334.0	93.18	269.97	6,681.3	-246.7	-4,509.0	4,513.7	0.82	0.64	-0.51
11,430.0	91.01	269.81	6,677.8	-246.8	-4,604.9	4,609.6	2.27	-2.26	-0.17
11,525.0	91.30	269.12	6,675.9	-247.7	-4,699.9	4,704.6	0.79	0.31	-0.73
11,621.0	90.99	268.88	6,674.0	-249.4	-4,795.8	4,800.6	0.41	-0.32	-0.25
11,716.0	91.02	268.77	6,672.3	-251.3	-4,890.8	4,895.6	0.12	0.03	-0.12
11,811.0	91.01	269.35	6,670.6	-252.9	-4,985.8	4,990.6	0.61	-0.01	0.61
11,907.0	90.80	269.01	6,669.1	-254.3	-5,081.7	5,086.5	0.42	-0.22	-0.35
12,003.0	90.05	269.34	6,668.4	-255.7	-5,177.7	5,182.5	0.85	-0.78	0.34
12,098.0	89.72	269.03	6,668.6	-257.0	-5,272.7	5,277.5	0.48	-0.35	-0.33
12,194.0	89.15	268.35	6,669.5	-259.2	-5,368.7	5,373.5	0.92	-0.59	-0.71
12,289.0	89.94	271.05	6,670.3	-259.7	-5,463.7	5,468.5	2.96	0.83	2.84
12,384.0	91.76	270.94	6,668.9	-258.1	-5,558.6	5,563.4	1.92	1.92	-0.12
12,480.0	91.29	270.11	6,666.3	-257.2	-5,654.6	5,659.3	0.99	-0.49	-0.86
12,576.0	92.83	270.68	6,662.9	-256.5	-5,750.5	5,755.2	1.71	1.60	0.59
12,671.0	92.95	270.05	6,658.1	-255.9	-5,845.4	5,850.0	0.67	0.13	-0.66
12,767.0	92.49	269.85	6,653.5	-256.0	-5,941.3	5,945.9	0.52	-0.48	-0.21
12,862.0	93.58	270.99	6,648.5	-255.3	-6,036.2	6,040.7	1.66	1.15	1.20
12,958.0	93.46	270.68	6,642.6	-253.9	-6,132.0	6,136.4	0.35	-0.13	-0.32

<b>Company:</b>	PDC Energy Inc. DJ Basin	<b>Local Co-ordinate Reference:</b>	Well Lindsey 10C (Codell)
<b>Project:</b>	SEC.1-T4N-R64W	<b>TVD Reference:</b>	WELL @ 4633.0ft (RKB - 23')
<b>Site:</b>	Lindsey 4N64W01 Pad Sec.1-T4N-R64W	<b>MD Reference:</b>	WELL @ 4633.0ft (RKB - 23')
<b>Well:</b>	Lindsey 10C (Codell)	<b>North Reference:</b>	True
<b>Wellbore:</b>	Lindsey 10C Wellbore #1	<b>Survey Calculation Method:</b>	Minimum Curvature
<b>Design:</b>	Lindsey 10C Wellbore #1	<b>Database:</b>	US_EDM

Survey										
Measured Depth (ft)	Inclination (°)	Azimuth (°)	Vertical Depth (ft)	+N/-S (ft)	+E/-W (ft)	Vertical Section (ft)	Dogleg Rate (°/100usft)	Build Rate (°/100usft)	Turn Rate (°/100usft)	
13,053.0	91.30	271.16	6,638.7	-252.4	-6,226.9	6,231.3	2.33	-2.27	0.51	
13,148.0	91.07	271.39	6,636.7	-250.3	-6,321.8	6,326.1	0.34	-0.24	0.24	
13,244.0	90.59	271.22	6,635.3	-248.1	-6,417.8	6,422.0	0.53	-0.50	-0.18	
13,339.0	90.46	270.81	6,634.4	-246.4	-6,512.8	6,516.9	0.45	-0.14	-0.43	
13,435.0	91.80	271.58	6,632.5	-244.4	-6,608.7	6,612.8	1.61	1.40	0.80	
13,531.0	91.64	270.75	6,629.7	-242.4	-6,704.7	6,708.7	0.88	-0.17	-0.86	
13,627.0	92.06	270.06	6,626.6	-241.8	-6,800.6	6,804.6	0.84	0.44	-0.72	
13,723.0	92.53	271.37	6,622.7	-240.6	-6,896.5	6,900.4	1.45	0.49	1.36	
13,819.0	93.39	271.24	6,617.8	-238.4	-6,992.4	6,996.2	0.91	0.90	-0.14	
13,915.0	92.31	272.88	6,613.0	-234.9	-7,088.2	7,091.9	2.04	-1.13	1.71	
14,011.0	91.08	272.95	6,610.2	-230.1	-7,184.0	7,187.5	1.28	-1.28	0.07	
14,107.0	91.04	272.81	6,608.4	-225.2	-7,279.9	7,283.2	0.15	-0.04	-0.15	
14,202.0	91.06	272.01	6,606.6	-221.2	-7,374.8	7,378.0	0.84	0.02	-0.84	
14,285.9	91.02	271.87	6,605.1	-218.4	-7,458.6	7,461.8	0.17	-0.04	-0.17	
<b>WP #1 (10C)</b>										
14,297.0	91.02	271.85	6,604.9	-218.0	-7,469.7	7,472.8	0.17	-0.04	-0.17	
14,393.0	90.86	271.36	6,603.3	-215.4	-7,565.7	7,568.7	0.54	-0.17	-0.51	
14,488.0	92.67	271.20	6,600.4	-213.2	-7,660.6	7,663.5	1.91	1.91	-0.17	
14,584.0	92.74	271.37	6,595.9	-211.1	-7,756.5	7,759.3	0.19	0.07	0.18	
14,678.0	92.42	271.28	6,591.6	-208.9	-7,850.3	7,853.1	0.35	-0.34	-0.10	
14,774.0	92.03	271.21	6,587.9	-206.8	-7,946.2	7,948.9	0.41	-0.41	-0.07	
14,869.0	91.97	270.62	6,584.6	-205.3	-8,041.2	8,043.8	0.62	-0.06	-0.62	
14,965.0	92.71	269.71	6,580.7	-205.0	-8,137.1	8,139.7	1.22	0.77	-0.95	
15,060.0	92.46	269.24	6,576.4	-205.9	-8,232.0	8,234.6	0.56	-0.26	-0.49	
15,156.0	92.66	268.62	6,572.1	-207.7	-8,327.9	8,330.5	0.68	0.21	-0.65	
15,251.0	92.65	268.72	6,567.7	-209.9	-8,422.7	8,425.4	0.11	-0.01	0.11	
15,347.0	90.84	268.22	6,564.8	-212.5	-8,518.7	8,521.3	1.96	-1.89	-0.52	
15,442.0	90.72	267.69	6,563.5	-215.8	-8,613.6	8,616.3	0.57	-0.13	-0.56	
15,538.0	90.66	268.29	6,562.3	-219.2	-8,709.5	8,712.3	0.63	-0.06	0.63	
15,633.0	90.70	267.94	6,561.2	-222.3	-8,804.5	8,807.3	0.37	0.04	-0.37	
15,728.0	90.30	267.62	6,560.4	-226.0	-8,899.4	8,902.3	0.54	-0.42	-0.34	
15,824.0	90.67	266.85	6,559.6	-230.7	-8,995.3	8,998.2	0.89	0.39	-0.80	
15,920.0	90.36	266.50	6,558.7	-236.2	-9,091.1	9,094.2	0.49	-0.32	-0.36	
16,015.0	90.31	268.56	6,558.2	-240.3	-9,186.0	9,189.2	2.17	-0.05	2.17	
16,111.0	90.68	268.42	6,557.3	-242.8	-9,282.0	9,285.2	0.41	0.39	-0.15	
16,207.0	91.45	268.14	6,555.5	-245.7	-9,377.9	9,381.1	0.85	0.80	-0.29	
16,302.0	92.29	267.66	6,552.4	-249.2	-9,472.8	9,476.1	1.02	0.88	-0.51	
16,397.0	93.40	267.07	6,547.7	-253.6	-9,567.6	9,570.9	1.32	1.17	-0.62	
16,493.0	91.66	267.15	6,543.5	-258.4	-9,663.4	9,666.8	1.81	-1.81	0.08	
16,587.0	91.69	266.64	6,540.7	-263.5	-9,757.2	9,760.7	0.54	0.03	-0.54	
16,631.0	92.13	266.34	6,539.3	-266.2	-9,801.1	9,804.7	1.21	1.00	-0.68	
16,691.0	92.13	266.34	6,537.0	-270.0	-9,860.9	9,864.6	0.00	0.00	0.00	
<b>Projected BHL 54'FSL &amp; 156'FWL, Sec.2</b>										

<b>Company:</b>	PDC Energy Inc. DJ Basin	<b>Local Co-ordinate Reference:</b>	Well Lindsey 10C (Codell)
<b>Project:</b>	SEC.1-T4N-R64W	<b>TVD Reference:</b>	WELL @ 4633.0ft (RKB - 23')
<b>Site:</b>	Lindsey 4N64W01 Pad Sec.1-T4N-R64W	<b>MD Reference:</b>	WELL @ 4633.0ft (RKB - 23')
<b>Well:</b>	Lindsey 10C (Codell)	<b>North Reference:</b>	True
<b>Wellbore:</b>	Lindsey 10C Wellbore #1	<b>Survey Calculation Method:</b>	Minimum Curvature
<b>Design:</b>	Lindsey 10C Wellbore #1	<b>Database:</b>	US_EDM

Design Targets										
Target Name	Dip Angle	Dip Dir.	TVD	+N/-S	+E/-W	Northing	Easting	Latitude	Longitude	
- hit/miss target	(°)	(°)	(ft)	(ft)	(ft)	(usft)	(usft)			
- Shape										
SHL 329'FSL & 439'FEL - survey hits target center - Point	0.00	0.00	1.0	0.0	0.0	1,366,506.59	3,281,238.22	40.335070	-104.491150	
Projected BHL 54'FSL & - survey misses target center by 21.6ft at 16691.0ft MD (6537.0 TVD, -270.0 N, -9860.9 E) - Point	0.00	0.00	6,540.0	-249.4	-9,866.5	1,366,144.97	3,271,375.67	40.334380	-104.526540	
WP #1 (10C) - survey misses target center by 4.2ft at 14285.9ft MD (6605.1 TVD, -218.4 N, -7458.6 E) - Point	0.00	0.00	6,602.5	-221.7	-7,458.7	1,366,200.06	3,273,782.85	40.334458	-104.517904	

Survey Annotations					
Measured Depth	Vertical Depth	Local Coordinates		Comment	
(ft)	(ft)	+N/-S	+E/-W		
		(ft)	(ft)		
6,831.3	6,622.1	-215.7	-21.3	TPZ - 460' Setback - 114'FSL, 460'FEL, Sec.1	
9,993.0	6,705.6	-260.8	-3,168.4	Deepest TVD Drilled - 6705.65' TVD	

Checked By: \_\_\_\_\_ Approved By: \_\_\_\_\_ Date: \_\_\_\_\_