

PETROLEUM DEVELOPMENT CORP Weld County CO

Well Name: Chesnut 28U-403

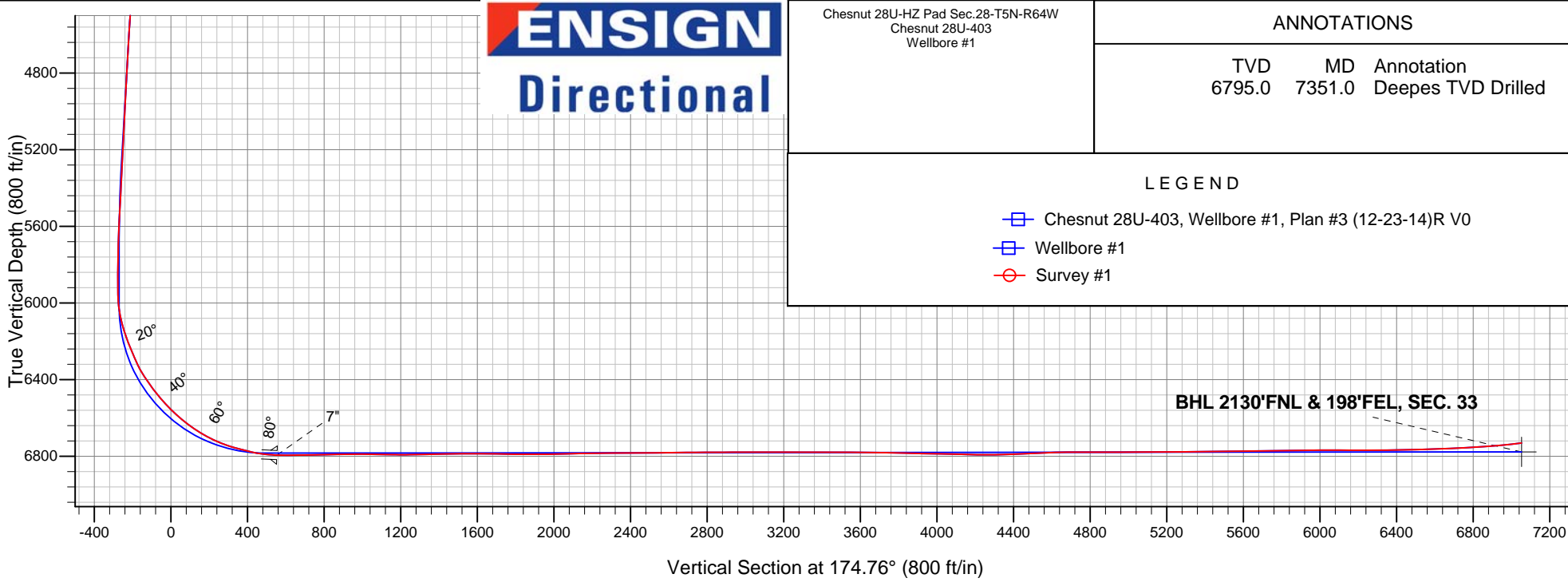
Surface Location: Chesnut 28U-HZ Pad Sec.28-T5N-R64W
North American Datum 1983 , US State Plane 1983 , Colorado Northern Zone

Ground Elevation: 4619.0

+N/-S	+E/-W	Northing	Easting	Latitude	Longitude	Slot
0.0	0.0	1381411.67	3265175.86	40.376470	-104.548190	
Ensign Rig #121 - RKB - 12.5' WELL @ 4632ft (Ensign Rig #121 - RKB - 13')						

FINAL SURVEY

Projected Bottom Hole Location
13836'MD 6731.15'TVD 7023'S & 646'E of
SHL 96.1 degree Incl @ 180.7 degree AZM





PETROLEUM DEVELOPMENT CORP Weld County CO

SEC.28-T5N-R64W

Chesnut 28U-HZ Pad Sec.28-T5N-R64W

Chesnut 28U-403

Wellbore #1

Survey: Survey #1

Standard Survey Report

07 January, 2015

Company:	PETROLEUM DEVELOPMENT CORP Weld County CO	Local Co-ordinate Reference:	Well Chesnut 28U-403
Project:	SEC.28-T5N-R64W	TVD Reference:	WELL @ 4632ft (Ensign Rig #121 - RKB -13')
Site:	Chesnut 28U-HZ Pad Sec.28-T5N-R64W	MD Reference:	WELL @ 4632.5ft (Ensign Rig #121 - RKB -13')
Well:	Chesnut 28U-403	North Reference:	True
Wellbore:	Wellbore #1	Survey Calculation Method:	Minimum Curvature
Design:	Wellbore #1	Database:	Landmark

Project	SEC.28-T5N-R64W, Weld County, Colorado		
Map System:	US State Plane 1983	System Datum:	Mean Sea Level
Geo Datum:	North American Datum 1983		Using Well Reference Point
Map Zone:	Colorado Northern Zone		Using geodetic scale factor

Site		Chesnut 28U-HZ Pad Sec.28-T5N-R64W			
Site Position:		Northing:	1,381,414.04ft	Latitude:	40.376480
From:	Lat/Long	Easting:	3,265,056.03ft	Longitude:	-104.548620
Position Uncertainty:	0.0 ft	Slot Radius:	"	Grid Convergence:	0.61 °

Well	Chesnut 28U-403					
Well Position	+N-S	0.0 ft	Northing:	1,381,411.67 ft	Latitude:	40.376470
	+E-W	0.0 ft	Easting:	3,265,175.86 ft	Longitude:	-104.548190
Position Uncertainty		0.0 ft	Wellhead Elevation:	ft	Ground Level:	4,619.0 ft

Wellbore	Wellbore #1				
Magnetics	Model Name	Sample Date	Declination (°)	Dip Angle (°)	Field Strength (nT)
	IGRF2010	12/23/2014	8.27	66.94	52,772

Design	Wellbore #1				
Audit Notes:					
Version:	1.0	Phase:	ACTUAL	Tie On Depth:	0.0
Vertical Section:	Depth From (TVD) (ft)	+N/-S (ft)	+E/-W (ft)	Direction (°)	
	0.0	0.0	0.0	174.76	

Survey Program	Date	1/7/2015			
From (ft)	To (ft)	Survey (Wellbore)	Tool Name	Description	
166.0	13,836.0	Survey #1 (Wellbore #1)	MWD	MWD - Standard	

Survey										
Measured Depth (ft)	Inclination (°)	Azimuth (°)	Vertical Depth (ft)	+N/-S (ft)	+E/-W (ft)	Vertical Section (ft)	Dogleg Rate (°/100ft)	Build Rate (°/100ft)	Turn Rate (°/100ft)	
0.0	0.00	0.00	0.0	0.0	0.0	0.0	0.00	0.00	0.00	
1.0	0.00	121.10	1.0	0.0	0.0	0.0	0.00	0.00	0.00	
SHL 380'FNL & 820'FEL, SEC. 28										
166.0	0.20	121.10	166.0	-0.1	0.2	0.2	0.12	0.12	0.00	
261.0	0.30	173.30	261.0	-0.5	0.4	0.5	0.25	0.11	54.95	
356.0	0.30	164.40	356.0	-1.0	0.5	1.0	0.05	0.00	-9.37	
451.0	0.40	139.60	451.0	-1.5	0.8	1.5	0.19	0.11	-26.11	
546.0	0.60	56.30	546.0	-1.4	1.4	1.6	0.72	0.21	-87.68	
641.0	2.20	65.40	641.0	-0.4	3.5	0.7	1.70	1.68	9.58	
736.0	3.70	65.40	735.8	1.6	7.9	-0.9	1.58	1.58	0.00	

Company:	PETROLEUM DEVELOPMENT CORP Weld County CO	Local Co-ordinate Reference:	Well Chesnut 28U-403
Project:	SEC.28-T5N-R64W	TVD Reference:	WELL @ 4632ft (Ensign Rig #121 - RKB -13')
Site:	Chesnut 28U-HZ Pad Sec.28-T5N-R64W	MD Reference:	WELL @ 4632ft (Ensign Rig #121 - RKB -13')
Well:	Chesnut 28U-403	North Reference:	True
Wellbore:	Wellbore #1	Survey Calculation Method:	Minimum Curvature
Design:	Wellbore #1	Database:	Landmark

Survey									
Measured Depth (ft)	Inclination (°)	Azimuth (°)	Vertical Depth (ft)	+N/-S (ft)	+E/-W (ft)	Vertical Section (ft)	Dogleg Rate (°/100ft)	Build Rate (°/100ft)	Turn Rate (°/100ft)
830.0	4.70	73.10	829.6	4.0	14.4	-2.7	1.22	1.06	8.19
880.0	5.10	73.10	879.4	5.3	18.5	-3.5	0.80	0.80	0.00
925.0	6.00	73.00	924.2	6.5	22.6	-4.4	2.00	2.00	-0.22
1,020.0	6.80	77.00	1,018.6	9.2	32.9	-6.2	0.96	0.84	4.21
1,115.0	7.60	75.10	1,112.8	12.1	44.4	-8.0	0.88	0.84	-2.00
1,210.0	8.00	65.00	1,207.0	16.5	56.5	-11.3	1.50	0.42	-10.63
1,306.0	8.90	66.30	1,301.9	22.3	69.3	-15.9	0.96	0.94	1.35
1,401.0	8.30	54.30	1,395.9	29.3	81.6	-21.7	1.99	-0.63	-12.63
1,496.0	8.80	54.90	1,489.8	37.5	93.1	-28.8	0.53	0.53	0.63
1,591.0	8.90	51.50	1,583.7	46.2	104.8	-36.5	0.56	0.11	-3.58
1,686.0	9.10	53.60	1,677.5	55.3	116.6	-44.4	0.40	0.21	2.21
1,781.0	9.10	65.40	1,771.3	62.8	129.5	-50.8	1.96	0.00	12.42
1,874.0	8.60	58.40	1,863.2	69.6	142.1	-56.3	1.28	-0.54	-7.53
1,969.0	9.00	63.30	1,957.1	76.6	154.8	-62.2	0.89	0.42	5.16
2,064.0	9.10	60.70	2,050.9	83.6	168.0	-67.9	0.44	0.11	-2.74
2,160.0	8.60	60.80	2,145.8	90.8	180.9	-74.0	0.52	-0.52	0.10
2,255.0	8.90	63.80	2,239.7	97.6	193.7	-79.5	0.57	0.32	3.16
2,350.0	8.50	61.40	2,333.6	104.2	206.4	-84.9	0.57	-0.42	-2.53
2,445.0	8.90	60.70	2,427.5	111.1	219.0	-90.7	0.44	0.42	-0.74
2,540.0	9.60	64.90	2,521.2	118.1	232.6	-96.4	1.02	0.74	4.42
2,635.0	9.50	62.20	2,614.9	125.1	246.7	-102.1	0.48	-0.11	-2.84
2,730.0	9.50	58.90	2,708.6	132.8	260.4	-108.5	0.57	0.00	-3.47
2,826.0	8.90	55.90	2,803.4	141.1	273.3	-115.5	0.80	-0.63	-3.13
2,923.0	9.50	61.40	2,899.1	149.1	286.5	-122.3	1.10	0.62	5.67
3,019.0	8.10	58.50	2,994.0	156.4	299.3	-128.5	1.53	-1.46	-3.02
3,114.0	8.60	66.60	3,088.0	162.7	311.5	-133.6	1.34	0.53	8.53
3,209.0	9.60	64.30	3,181.8	169.0	325.1	-138.6	1.12	1.05	-2.42
3,304.0	8.40	56.10	3,275.6	176.3	338.0	-144.7	1.85	-1.26	-8.63
3,399.0	9.70	60.70	3,369.5	184.1	350.8	-151.3	1.57	1.37	4.84
3,494.0	9.40	67.90	3,463.2	190.9	364.9	-156.8	1.30	-0.32	7.58
3,589.0	9.80	65.40	3,556.8	197.2	379.5	-161.7	0.61	0.42	-2.63
3,684.0	9.80	63.80	3,650.4	204.1	394.1	-167.3	0.29	0.00	-1.68
3,780.0	9.60	63.80	3,745.1	211.3	408.6	-173.1	0.21	-0.21	0.00
3,875.0	8.80	61.20	3,838.8	218.3	422.1	-178.8	0.95	-0.84	-2.74
3,970.0	9.50	67.20	3,932.6	224.8	435.7	-184.1	1.24	0.74	6.32
4,065.0	8.50	62.10	4,026.5	231.1	449.1	-189.2	1.35	-1.05	-5.37
4,161.0	9.10	66.50	4,121.3	237.5	462.3	-194.3	0.94	0.63	4.58
4,256.0	8.20	62.60	4,215.3	243.6	475.2	-199.2	1.13	-0.95	-4.11
4,351.0	9.10	68.70	4,309.2	249.5	488.3	-203.8	1.35	0.95	6.42
4,446.0	8.20	67.50	4,403.1	254.8	501.5	-207.9	0.97	-0.95	-1.26
4,541.0	8.40	65.00	4,497.1	260.3	514.1	-212.3	0.43	0.21	-2.63
4,637.0	9.00	59.40	4,592.0	267.1	526.9	-217.9	1.08	0.63	-5.83
4,732.0	7.40	58.20	4,686.0	274.1	538.5	-223.8	1.69	-1.68	-1.26
4,827.0	7.80	59.10	4,780.2	280.6	549.2	-229.3	0.44	0.42	0.95
4,922.0	9.50	68.40	4,874.1	286.8	562.0	-234.3	2.31	1.79	9.79
5,018.0	8.60	65.40	4,968.9	292.7	575.9	-238.9	1.06	-0.94	-3.13
5,113.0	8.60	66.60	5,062.8	298.5	588.9	-243.5	0.19	0.00	1.26
5,208.0	8.60	65.20	5,156.8	304.3	601.9	-248.1	0.22	0.00	-1.47
5,304.0	7.70	62.20	5,251.8	310.3	614.1	-253.0	1.04	-0.94	-3.13
5,399.0	6.50	59.60	5,346.1	316.0	624.3	-257.7	1.31	-1.26	-2.74
5,494.0	5.50	52.90	5,440.6	321.5	632.6	-262.4	1.28	-1.05	-7.05

Company:	PETROLEUM DEVELOPMENT CORP Weld County CO	Local Co-ordinate Reference:	Well Chesnut 28U-403
Project:	SEC.28-T5N-R64W	TVD Reference:	WELL @ 4632ft (Ensign Rig #121 - RKB -13')
Site:	Chesnut 28U-HZ Pad Sec.28-T5N-R64W	MD Reference:	WELL @ 4632ft (Ensign Rig #121 - RKB -13')
Well:	Chesnut 28U-403	North Reference:	True
Wellbore:	Wellbore #1	Survey Calculation Method:	Minimum Curvature
Design:	Wellbore #1	Database:	Landmark

Survey									
Measured Depth (ft)	Inclination (°)	Azimuth (°)	Vertical Depth (ft)	+N/-S (ft)	+E/-W (ft)	Vertical Section (ft)	Dogleg Rate (°/100ft)	Build Rate (°/100ft)	Turn Rate (°/100ft)
5,589.0	4.60	36.40	5,535.2	327.3	638.5	-267.6	1.79	-0.95	-17.37
5,684.0	3.50	47.60	5,630.0	332.3	642.9	-272.2	1.42	-1.16	11.79
5,780.0	1.70	34.50	5,725.9	335.5	645.9	-275.1	1.96	-1.88	-13.65
5,875.0	0.30	0.50	5,820.8	336.9	646.7	-276.4	1.54	-1.47	-35.79
5,970.0	0.60	28.30	5,915.8	337.6	646.9	-277.1	0.38	0.32	29.26
6,065.0	5.80	179.10	6,010.7	333.2	647.2	-272.7	6.66	5.47	158.74
6,161.0	14.70	176.10	6,105.1	316.2	648.1	-255.7	9.28	9.27	-3.13
6,256.0	21.20	177.50	6,195.4	286.9	649.7	-226.4	6.86	6.84	1.47
6,303.0	21.50	176.00	6,239.2	269.9	650.7	-209.3	1.33	0.64	-3.19
6,351.0	23.70	177.70	6,283.5	251.4	651.7	-190.9	4.78	4.58	3.54
6,398.0	25.70	181.80	6,326.2	231.8	651.7	-171.4	5.60	4.26	8.72
6,446.0	30.60	182.30	6,368.5	209.2	650.9	-148.9	10.22	10.21	1.04
6,493.0	35.50	181.60	6,407.9	183.6	650.1	-123.5	10.46	10.43	-1.49
6,541.0	38.30	180.70	6,446.2	154.8	649.5	-94.8	5.94	5.83	-1.88
6,588.0	39.80	179.70	6,482.7	125.2	649.4	-65.4	3.46	3.19	-2.13
6,636.0	42.20	180.70	6,519.0	93.7	649.3	-34.0	5.18	5.00	2.08
6,683.0	45.10	180.50	6,553.0	61.2	648.9	-1.7	6.18	6.17	-0.43
6,732.0	48.00	181.80	6,586.7	25.7	648.2	33.6	6.22	5.92	2.65
6,779.0	50.50	182.80	6,617.3	-9.9	646.8	68.9	5.56	5.32	2.13
6,827.0	54.30	182.30	6,646.6	-47.9	645.1	106.6	7.96	7.92	-1.04
6,874.0	58.70	180.00	6,672.6	-87.1	644.3	145.5	10.21	9.36	-4.89
6,922.0	62.80	178.80	6,696.0	-128.9	644.8	187.2	8.82	8.54	-2.50
6,969.0	65.50	179.30	6,716.5	-171.2	645.5	229.4	5.82	5.74	1.06
7,017.0	68.50	179.80	6,735.3	-215.4	645.8	273.4	6.32	6.25	1.04
7,064.0	72.90	180.70	6,750.8	-259.7	645.6	317.6	9.53	9.36	1.91
7,112.0	75.80	180.50	6,763.7	-306.0	645.1	363.6	6.05	6.04	-0.42
7,159.0	76.40	180.40	6,775.0	-351.6	644.8	409.0	1.29	1.28	-0.21
7,208.0	80.40	180.00	6,784.9	-399.6	644.6	456.7	8.20	8.16	-0.82
7,250.0	84.50	180.20	6,790.4	-441.2	644.5	498.2	9.77	9.76	0.48
7,280.0	86.40	180.50	6,792.8	-471.1	644.3	527.9	6.41	6.33	1.00
7,306.0	87.72	180.24	6,794.1	-497.1	644.2	553.8	5.17	5.07	-0.99
7"									
7,351.0	90.00	179.80	6,795.0	-542.0	644.2	598.6	5.17	5.07	-0.99
Deepest TVD Drilled									
7,446.0	91.50	180.00	6,793.8	-637.0	644.3	693.2	1.59	1.58	0.21
7,541.0	91.50	179.80	6,791.3	-732.0	644.5	787.8	0.21	0.00	-0.21
7,635.0	90.00	179.70	6,790.0	-826.0	644.9	881.4	1.60	-1.60	-0.11
7,727.0	90.10	177.40	6,790.0	-918.0	647.2	973.2	2.50	0.11	-2.50
7,818.0	89.80	177.00	6,790.0	-1,008.8	651.7	1,064.1	0.55	-0.33	-0.44
7,910.0	88.50	177.70	6,791.4	-1,100.7	655.9	1,156.0	1.60	-1.41	0.76
8,001.0	90.80	181.10	6,792.0	-1,191.7	656.9	1,246.7	4.51	2.53	3.74
8,092.0	91.20	180.50	6,790.4	-1,282.7	655.6	1,337.2	0.79	0.44	-0.66
8,184.0	91.20	181.20	6,788.4	-1,374.7	654.2	1,428.6	0.76	0.00	0.76
8,275.0	90.50	180.90	6,787.1	-1,465.6	652.6	1,519.1	0.84	-0.77	-0.33
8,367.0	89.70	180.50	6,786.9	-1,557.6	651.5	1,610.6	0.97	-0.87	-0.43
8,459.0	89.00	180.50	6,788.0	-1,649.6	650.7	1,702.1	0.76	-0.76	0.00
8,551.0	89.50	181.80	6,789.2	-1,741.6	648.8	1,793.5	1.51	0.54	1.41
8,641.0	90.00	181.90	6,789.6	-1,831.5	645.9	1,882.8	0.57	0.56	0.11
8,731.0	90.70	181.10	6,789.0	-1,921.5	643.5	1,972.2	1.18	0.78	-0.89
8,822.0	90.90	179.70	6,787.8	-2,012.5	642.9	2,062.8	1.55	0.22	-1.54
8,913.0	91.50	179.30	6,785.9	-2,103.5	643.7	2,153.4	0.79	0.66	-0.44
9,004.0	91.10	178.80	6,783.8	-2,194.4	645.2	2,244.2	0.70	-0.44	-0.55

Company:	PETROLEUM DEVELOPMENT CORP Weld County CO	Local Co-ordinate Reference:	Well Chesnut 28U-403
Project:	SEC.28-T5N-R64W	TVD Reference:	WELL @ 4632ft (Ensign Rig #121 - RKB -13')
Site:	Chesnut 28U-HZ Pad Sec.28-T5N-R64W	MD Reference:	WELL @ 4632ft (Ensign Rig #121 - RKB -13')
Well:	Chesnut 28U-403	North Reference:	True
Wellbore:	Wellbore #1	Survey Calculation Method:	Minimum Curvature
Design:	Wellbore #1	Database:	Landmark

Survey									
Measured Depth (ft)	Inclination (°)	Azimuth (°)	Vertical Depth (ft)	+N/-S (ft)	+E/-W (ft)	Vertical Section (ft)	Dogleg Rate (°/100ft)	Build Rate (°/100ft)	Turn Rate (°/100ft)
9,095.0	89.60	180.20	6,783.2	-2,285.4	646.0	2,334.8	2.25	-1.65	1.54
9,185.0	90.30	179.80	6,783.3	-2,375.4	646.0	2,424.5	0.90	0.78	-0.44
9,275.0	91.10	179.30	6,782.2	-2,465.4	646.7	2,514.1	1.05	0.89	-0.56
9,366.0	90.00	180.50	6,781.3	-2,556.4	646.9	2,604.8	1.79	-1.21	1.32
9,456.0	90.90	180.20	6,780.6	-2,646.4	646.3	2,694.3	1.05	1.00	-0.33
9,552.0	89.90	181.40	6,780.0	-2,742.4	645.0	2,789.8	1.63	-1.04	1.25
9,647.0	90.90	181.20	6,779.3	-2,837.3	642.8	2,884.2	1.07	1.05	-0.21
9,742.0	89.70	180.70	6,778.8	-2,932.3	641.2	2,978.6	1.37	-1.26	-0.53
9,837.0	90.30	180.00	6,778.8	-3,027.3	640.7	3,073.2	0.97	0.63	-0.74
9,932.0	90.00	179.10	6,778.6	-3,122.3	641.4	3,167.8	1.00	-0.32	-0.95
10,027.0	89.90	178.10	6,778.6	-3,217.3	643.7	3,262.6	1.06	-0.11	-1.05
10,122.0	90.30	177.00	6,778.5	-3,312.2	647.8	3,357.5	1.23	0.42	-1.16
10,218.0	89.00	177.90	6,779.1	-3,408.1	652.1	3,453.4	1.65	-1.35	0.94
10,313.0	89.70	180.20	6,780.1	-3,503.1	653.6	3,548.1	2.53	0.74	2.42
10,408.0	89.90	182.30	6,780.5	-3,598.1	651.6	3,642.5	2.22	0.21	2.21
10,503.0	89.10	181.20	6,781.3	-3,693.0	648.7	3,736.8	1.43	-0.84	-1.16
10,598.0	88.20	180.70	6,783.5	-3,788.0	647.1	3,831.2	1.08	-0.95	-0.53
10,693.0	88.90	181.10	6,785.9	-3,882.9	645.6	3,925.6	0.85	0.74	0.42
10,788.0	89.10	179.50	6,787.6	-3,977.9	645.1	4,020.2	1.70	0.21	-1.68
10,883.0	88.50	180.70	6,789.6	-4,072.9	644.9	4,114.7	1.41	-0.63	1.26
10,979.0	87.80	181.10	6,792.7	-4,168.8	643.4	4,210.1	0.84	-0.73	0.42
11,073.0	92.20	182.60	6,792.7	-4,262.7	640.4	4,303.4	4.95	4.68	1.60
11,168.0	92.40	183.50	6,788.9	-4,357.5	635.3	4,397.3	0.97	0.21	0.95
11,263.0	92.20	182.30	6,785.1	-4,452.3	630.5	4,491.3	1.28	-0.21	-1.26
11,358.0	92.50	181.20	6,781.2	-4,547.2	627.6	4,585.5	1.20	0.32	-1.16
11,454.0	89.90	180.20	6,779.2	-4,643.2	626.5	4,681.0	2.90	-2.71	-1.04
11,549.0	90.20	179.80	6,779.1	-4,738.2	626.5	4,775.6	0.53	0.32	-0.42
11,643.0	90.00	180.00	6,778.9	-4,832.2	626.6	4,869.2	0.30	-0.21	0.21
11,738.0	90.20	179.80	6,778.7	-4,927.2	626.8	4,963.8	0.30	0.21	-0.21
11,833.0	90.40	179.80	6,778.2	-5,022.2	627.1	5,058.4	0.21	0.21	0.00
11,928.0	90.50	179.50	6,777.5	-5,117.2	627.7	5,153.1	0.33	0.11	-0.32
12,023.0	90.20	179.00	6,776.9	-5,212.1	629.0	5,247.8	0.61	-0.32	-0.53
12,118.0	90.60	179.70	6,776.3	-5,307.1	630.0	5,342.5	0.85	0.42	0.74
12,213.0	90.50	179.80	6,775.3	-5,402.1	630.5	5,437.1	0.15	-0.11	0.11
12,308.0	90.20	180.20	6,774.8	-5,497.1	630.5	5,531.7	0.53	-0.32	0.42
12,403.0	91.40	180.00	6,773.4	-5,592.1	630.3	5,626.3	1.28	1.26	-0.21
12,498.0	90.80	178.10	6,771.6	-5,687.1	631.9	5,721.0	2.10	-0.63	-2.00
12,593.0	90.70	178.10	6,770.4	-5,782.0	635.0	5,815.8	0.11	-0.11	0.00
12,688.0	90.70	177.40	6,769.2	-5,876.9	638.7	5,910.7	0.74	0.00	-0.74
12,783.0	90.40	177.70	6,768.3	-5,971.8	642.8	6,005.6	0.45	-0.32	0.32
12,878.0	89.70	178.60	6,768.2	-6,066.8	645.9	6,100.4	1.20	-0.74	0.95
12,974.0	89.30	178.80	6,769.0	-6,162.8	648.0	6,196.2	0.47	-0.42	0.21
13,069.0	91.00	180.00	6,768.8	-6,257.8	649.0	6,290.9	2.19	1.79	1.26
13,164.0	91.00	179.80	6,767.1	-6,352.7	649.2	6,385.5	0.21	0.00	-0.21
13,259.0	90.90	179.50	6,765.6	-6,447.7	649.8	6,480.1	0.33	-0.11	-0.32
13,354.0	91.50	180.20	6,763.6	-6,542.7	650.0	6,574.7	0.97	0.63	0.74
13,449.0	92.60	179.80	6,760.2	-6,637.6	650.0	6,669.3	1.23	1.16	-0.42
13,544.0	93.30	180.90	6,755.3	-6,732.5	649.5	6,763.7	1.37	0.74	1.16
13,640.0	93.80	180.50	6,749.3	-6,828.3	648.3	6,859.0	0.67	0.52	-0.42
13,735.0	95.50	180.70	6,741.6	-6,923.0	647.3	6,953.2	1.80	1.79	0.21
13,781.0	96.10	180.70	6,737.0	-6,968.8	646.7	6,998.7	1.30	1.30	0.00

Company:	PETROLEUM DEVELOPMENT CORP Weld County CO	Local Co-ordinate Reference:	Well Chesnut 28U-403
Project:	SEC.28-T5N-R64W	TVD Reference:	WELL @ 4632ft (Ensign Rig #121 - RKB -13')
Site:	Chesnut 28U-HZ Pad Sec.28-T5N-R64W	MD Reference:	WELL @ 4632ft (Ensign Rig #121 - RKB -13')
Well:	Chesnut 28U-403	North Reference:	True
Wellbore:	Wellbore #1	Survey Calculation Method:	Minimum Curvature
Design:	Wellbore #1	Database:	Landmark

Survey										
Measured Depth (ft)	Inclination (°)	Azimuth (°)	Vertical Depth (ft)	+N/-S (ft)	+E/-W (ft)	Vertical Section (ft)	Dogleg Rate (°/100ft)	Build Rate (°/100ft)	Turn Rate (°/100ft)	
13,831.6	96.10	180.70	6,731.6	-7,019.0	646.1	7,048.7	0.00	0.00	0.00	
BHL 2130'FNL & 200'FEL, SEC. 33										
13,836.0	96.10	180.70	6,731.2	-7,023.4	646.1	7,053.1	0.00	0.00	0.00	

Casing Points					
Measured Depth (ft)	Vertical Depth (ft)	Name	Casing Diameter (")	Hole Diameter (")	
7,306.0	6,794.1	7"	7	7-1/2	

Survey Annotations					
Measured Depth (ft)	Vertical Depth (ft)	Local Coordinates		Comment	
		+N/-S (ft)	+E/-W (ft)		
7,351.0	6,795.0	-542.0	644.2	Deepest TVD Drilled	

Checked By: _____	Approved By: _____	Date: _____
-------------------	--------------------	-------------