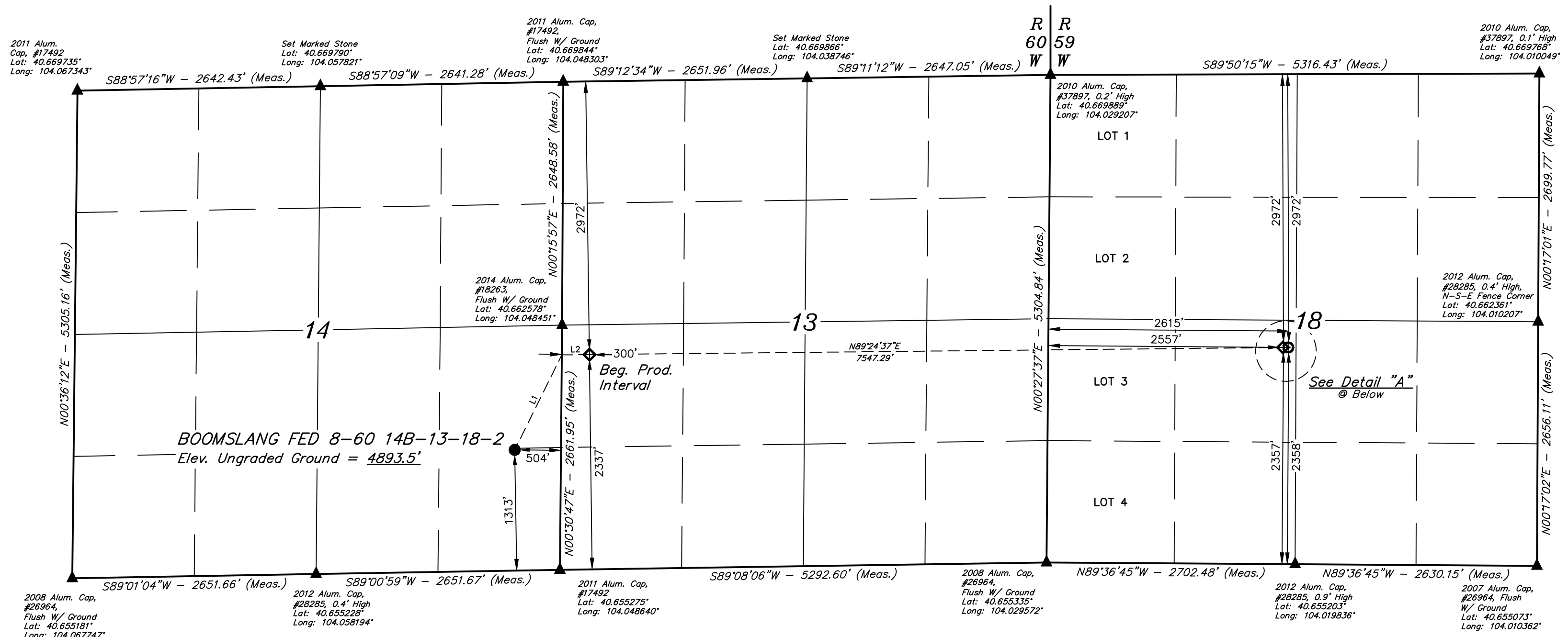


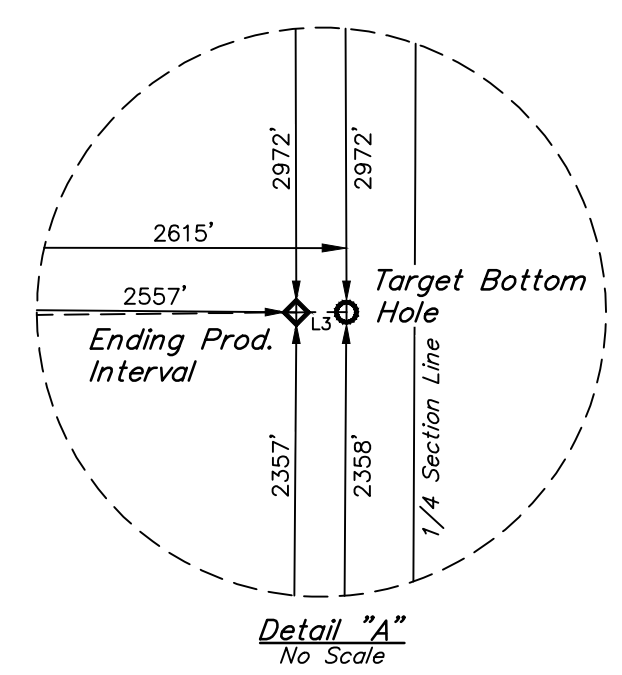
T8N, R60W, 6th P.M.

- LEGEND:**
 ● = PROPOSED WELLHEAD.
 ◇ = PRODUCTION INTERVAL.
 ○ = TARGET BOTTOM HOLE.
 ▲ = SECTION CORNERS LOCATED. (NAD 83)

NOTE:
 Distances referenced on plat to section lines are perpendicular.



LINE	DIRECTION	LENGTH
L1	N26°24'23"E	1154.27'
L2	N89°24'37"E	300.06'
L3	N89°50'15"E	58.00'



SURFACE LOCATION 1313' FSL 504' FWL	BEG. PROD. INTERVAL 2972' FNL 2337' FSL 300' FWL	ENDING PROD. INTERVAL 2972' FNL 2357' FSL 2557' FWL	TARGET BOTTOM HOLE 2972' FNL 2358' FSL 2615' FWL
NAD 83 (SURFACE LOCATION) LATITUDE = 40°39'31.93" (40.658870°) LONGITUDE = 104°03'01.31" (104.050363°)	NAD 83 (BEG. PROD. INTERVAL) LATITUDE = 40°39'42.09" (40.661691°) LONGITUDE = 104°02'50.61" (104.047392°)	NAD 83 (ENDING PROD. INTERVAL) LATITUDE = 40°39'42.04" (40.661677°) LONGITUDE = 104°01'12.71" (104.020198°)	NAD 83 (TARGET BOTTOM HOLE) LATITUDE = 40°39'42.03" (40.661676°) LONGITUDE = 104°01'11.96" (104.019989°)
NAD 27 (SURFACE LOCATION) LATITUDE = 40°39'31.98" (40.658884°) LONGITUDE = 104°02'59.49" (104.049859°)	NAD 27 (BEG. PROD. INTERVAL) LATITUDE = 40°39'42.14" (40.661705°) LONGITUDE = 104°02'48.80" (104.046888°)	NAD 27 (ENDING PROD. INTERVAL) LATITUDE = 40°39'42.08" (40.661690°) LONGITUDE = 104°01'10.89" (104.019693°)	NAD 27 (TARGET BOTTOM HOLE) LATITUDE = 40°39'42.08" (40.661688°) LONGITUDE = 104°01'10.14" (104.019484°)
STATE PLANE NAD 83 (CO. NORTH) N: 1486156.53' E: 3402179.16'	STATE PLANE NAD 83 (CO. NORTH) N: 1487197.61' E: 3402986.52'	STATE PLANE NAD 83 (CO. NORTH) N: 1487317.12' E: 3410530.38'	STATE PLANE NAD 83 (CO. NORTH) N: 1487317.60' E: 3410588.36'
STATE PLANE NAD 27 (CO. NORTH) N: 486155.16' E: 2402329.84'	STATE PLANE NAD 27 (CO. NORTH) N: 487196.21' E: 2403137.20'	STATE PLANE NAD 27 (CO. NORTH) N: 487315.60' E: 2410681.30'	STATE PLANE NAD 27 (CO. NORTH) N: 487316.09' E: 2410739.28'

BASIS OF BEARINGS:
 TRANSVERSE MERCATOR PROJECTION WITH A CENTRAL MERIDIAN OF W105°00'00".

BASIS OF ELEVATION:
 OPUS SOLUTION GENERATED NAVD 88

UELS, LLC
 Corporate Office * 85 South 200 East
 Vernal, UT 84078 * (435) 789-1017

CERTIFICATION
 THIS IS TO CERTIFY THAT THE ABOVE NOTES OF ACTUAL SURVEYS MADE UNDER MY SUPERVISION AND THAT THE SAME ARE TRUE AND CORRECT TO THE BEST OF MY KNOWLEDGE AND BELIEF.

REGISTERED LAND SURVEYOR
 REGISTRATION NO. 28285
 STATE OF COLORADO
 EXPIRES 04-19-19

REV: 6 09-12-19 T.A. (CORRECT QTR QTR)

BISON OIL & GAS II
BOOMSLANG FED 8-60 14B-13-18-2
 SE 1/4 SE 1/4, SECTION 14, T8N, R60W, 6th P.M.
 WELD COUNTY, COLORADO

SURVEYED BY: MATTHEW MILLER, J.B. 04-05-19 SCALE: 1" = 1000'
 DRAWN BY: J.J. 08-16-17

WELL LOCATION PLAT