



**RADIAL BOND  
GAMMA RAY  
CCL**

Company NOBLE ENERGY  
Well DECHANT D30-20D  
Field WATTENBERG  
County WELD  
State Colorado

Company NOBLE ENERGY  
Well DECHANT D30-20D  
Field WATTENBERG  
County WELD State Colorado

Location: NWSW 2220FSL 562FWL  
LAT: 40.194981 LONG: -104.60078  
API #: 05-123-33002  
SEC 30 TWP 3N RGE 64W  
Permanent Datum GL Elevation 4794'  
Log Measured From KB=15'  
Drilling Measured From KB  
Other Services  
Elevation  
K.B. 4809'  
D.F. 4808'  
G.L. 4794'

Date 10-14-2019  
Run Number 1  
Depth Driller 7852'  
Depth Logger 1500'  
Bottom Logged Interval 1500'  
Top Log Interval SURFACE  
Open Hole Size 8.50"  
Type Fluid WATER  
Density / Viscosity ~8.3  
Max. Recorded Temp. SEE LOG  
Estimated Cement Top  
Time Well Ready  
Time Logger on Bottom  
Equipment Number 058  
Location Windsor, CO  
Recorded By RYAN ALLES  
Witnessed By MARK ABBOTT

Borehole Record				Tubing Record			
Run Number	Bit	From	To	Size	Weight	From	To
Casing Record				Size	Wgt/Ft	Top	Bottom
Surface String		8.62'		24#		SURFACE	782'
Prot. String							
Production String		4.5"		11.6#		SURFACE	7842'
Liner							

<<< Fold Here >>>

All interpretations are opinions based on inferences from electrical or other measurements and we cannot and do not guarantee the accuracy or correctness of any interpretation, and we shall not, except in the case of gross or willful negligence on our part, be liable or responsible for any loss, costs, damages, or expenses incurred or sustained by anyone resulting from any interpretation made by any of our officers, agents or employees. These interpretations are also subject to our general terms and conditions set out in our current Price Schedule.

Comments

RAN CEMENT BOND LOG TO VERIFY CEMENT TOP  
THANK YOU FOR USING CUTTERS WIRELINE  
SHOP CAL 01-2019 LOG RAN AT 0 PSI

Sensor	Offset (ft)	Schematic	Description	Len (ft)	OD (in)	Wt (lb)
			Standard Standard Cable Head	1.00	1.69	1.00

WV3FT 8.69  
 WVFCAL 8.69  
 WVFS1 8.69  
 WVFS2 8.69  
 WVFS3 8.69  
 WVFS4 8.69  
 WVFS5 8.69  
 WVFS6 8.69  
 WVFS7 8.69  
 WVFS8 8.69  
 WV5FT 7.69

8.69  
 8.69  
 8.69  
 8.69  
 8.69  
 8.69  
 8.69  
 8.69  
 8.69  
 8.69  
 8.69  
 7.69



RBT-Probe (110223)  
 Probe 2.75" Radii Bond Tool

8.75 2.75 90.00

CCL

3.50

GR-275D\_INC (DIG110254)  
 2-3/4" GR-CCL with Inclination

4.50 2.75

IntTemp 2.00  
 ACCX 1.83  
 ACCY 1.83  
 ACCZ 1.83  
 GR 0.83

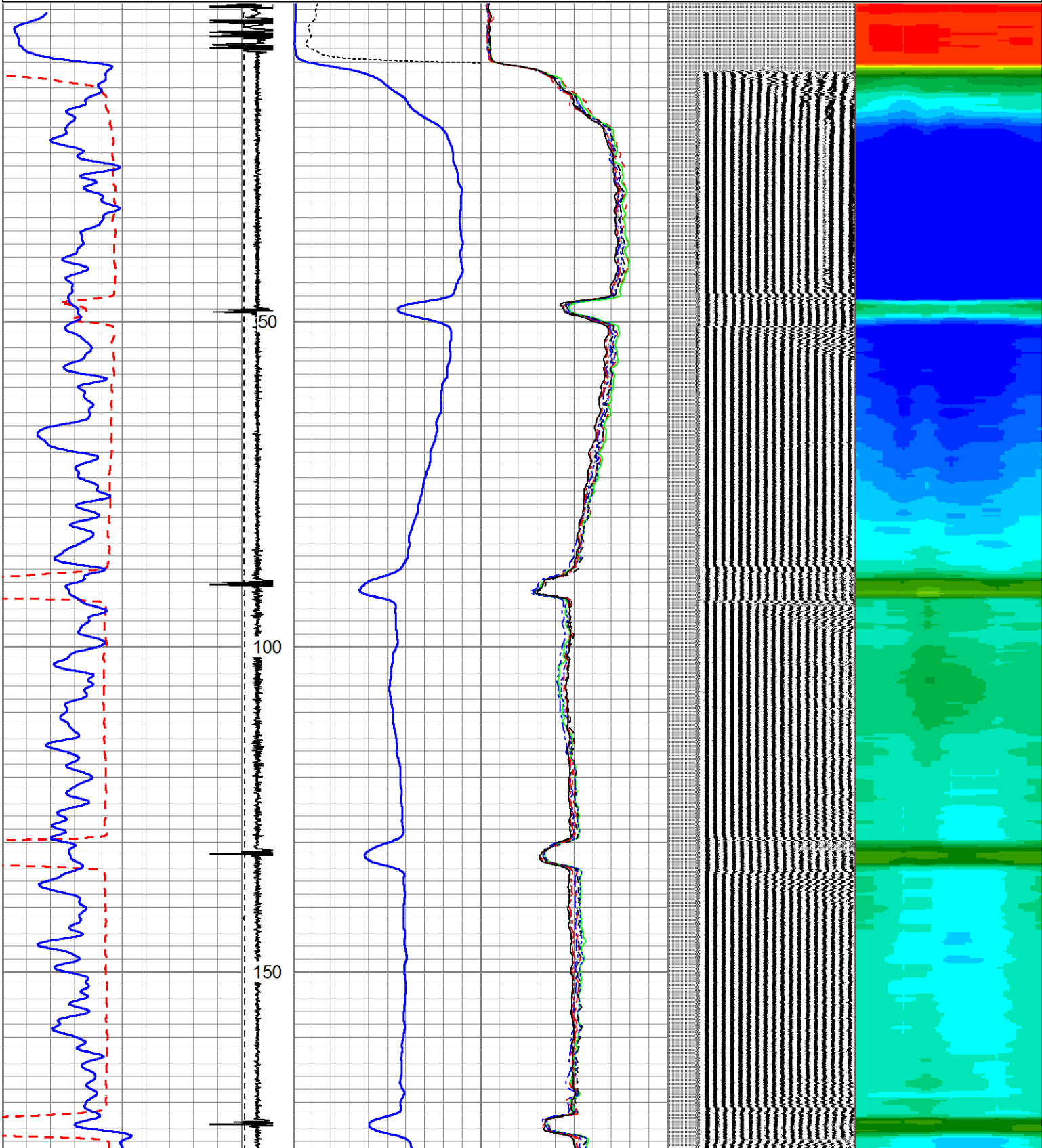
2.00  
 1.83  
 1.83  
 1.83  
 0.83

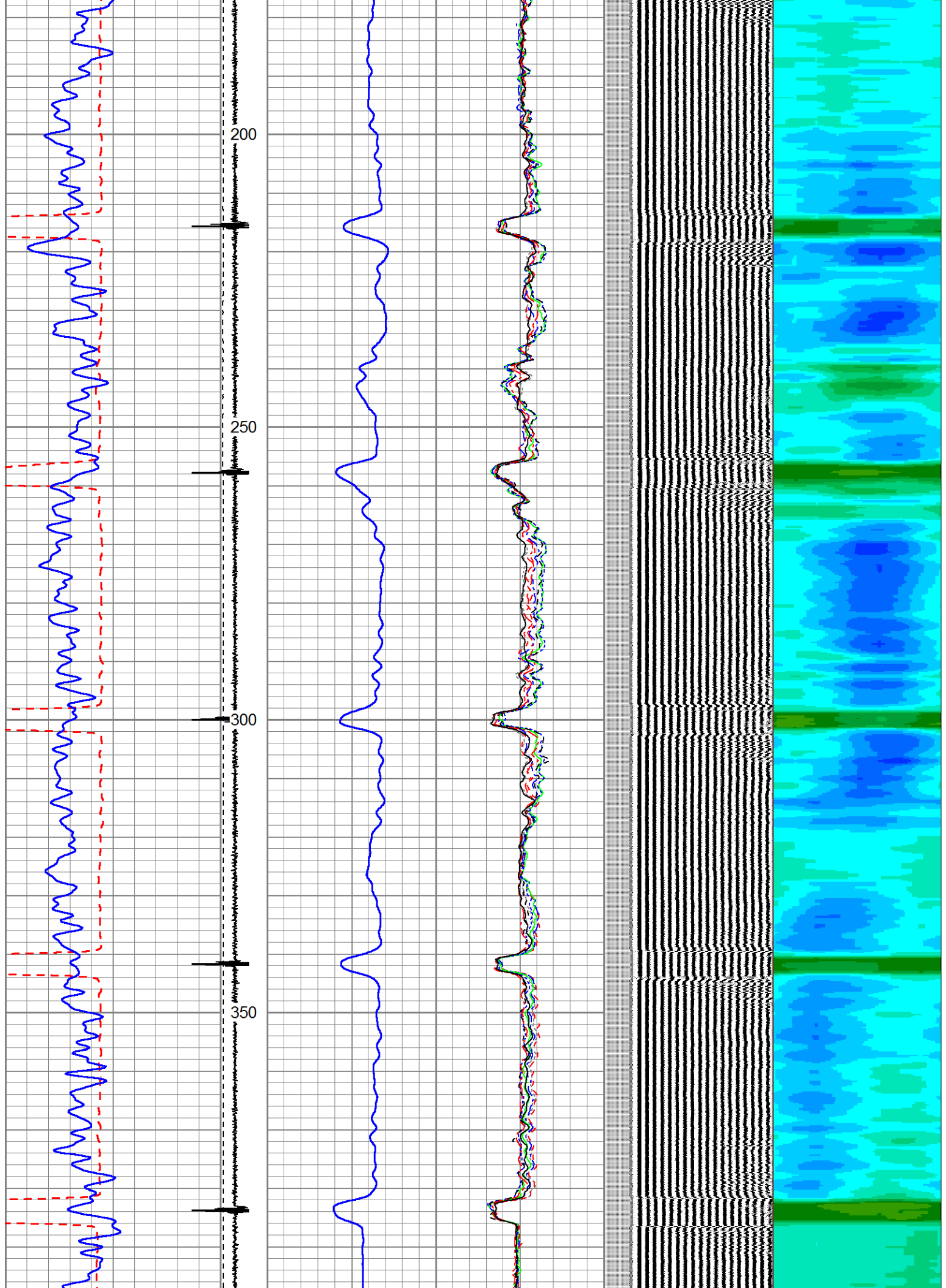


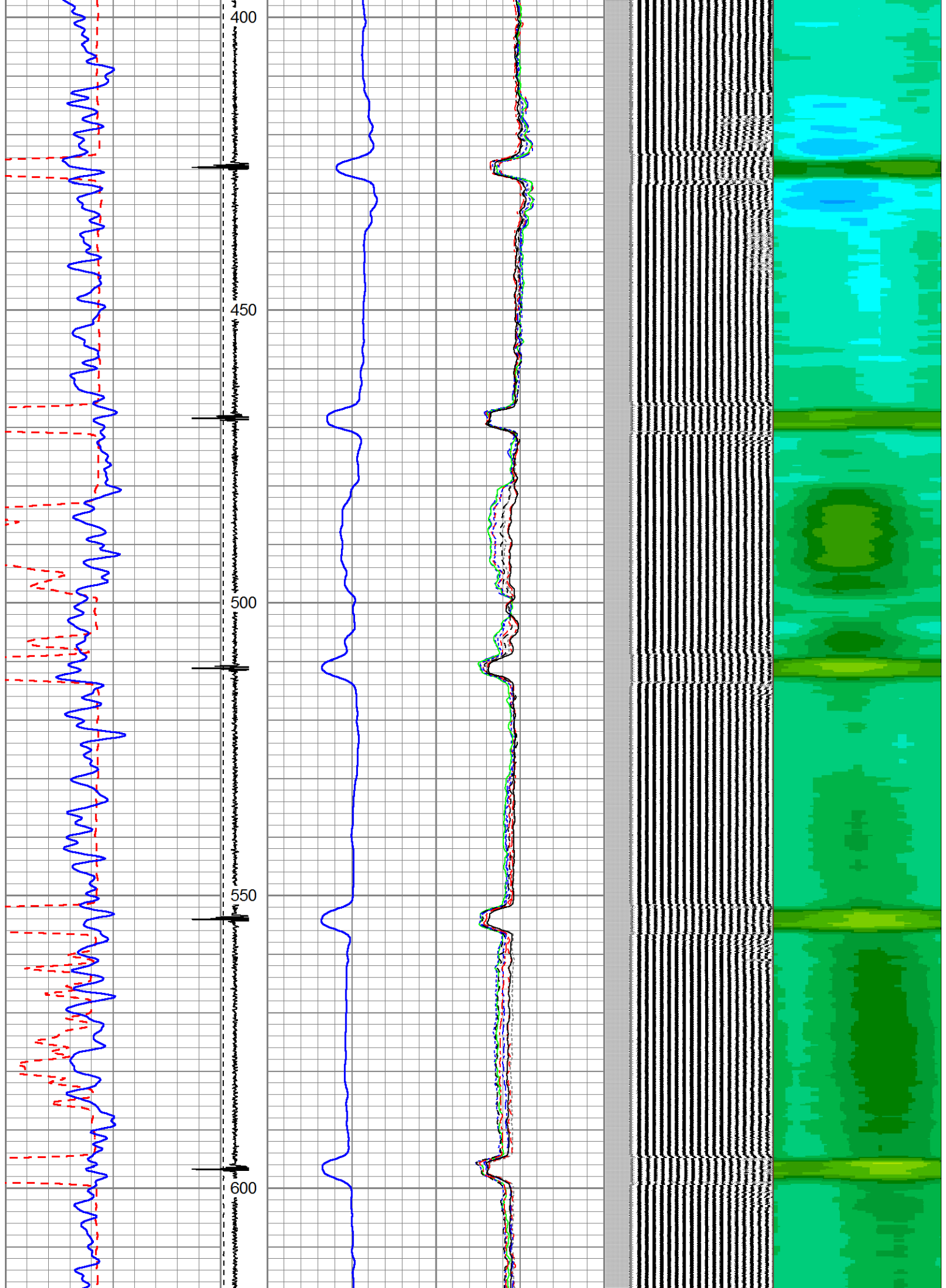
Dataset: dechant d30-20d.db: field/well/run1/pass5  
 Total Length: 14.25 ft  
 Total Weight: 91.00 lb  
 O.D. 2.75 in

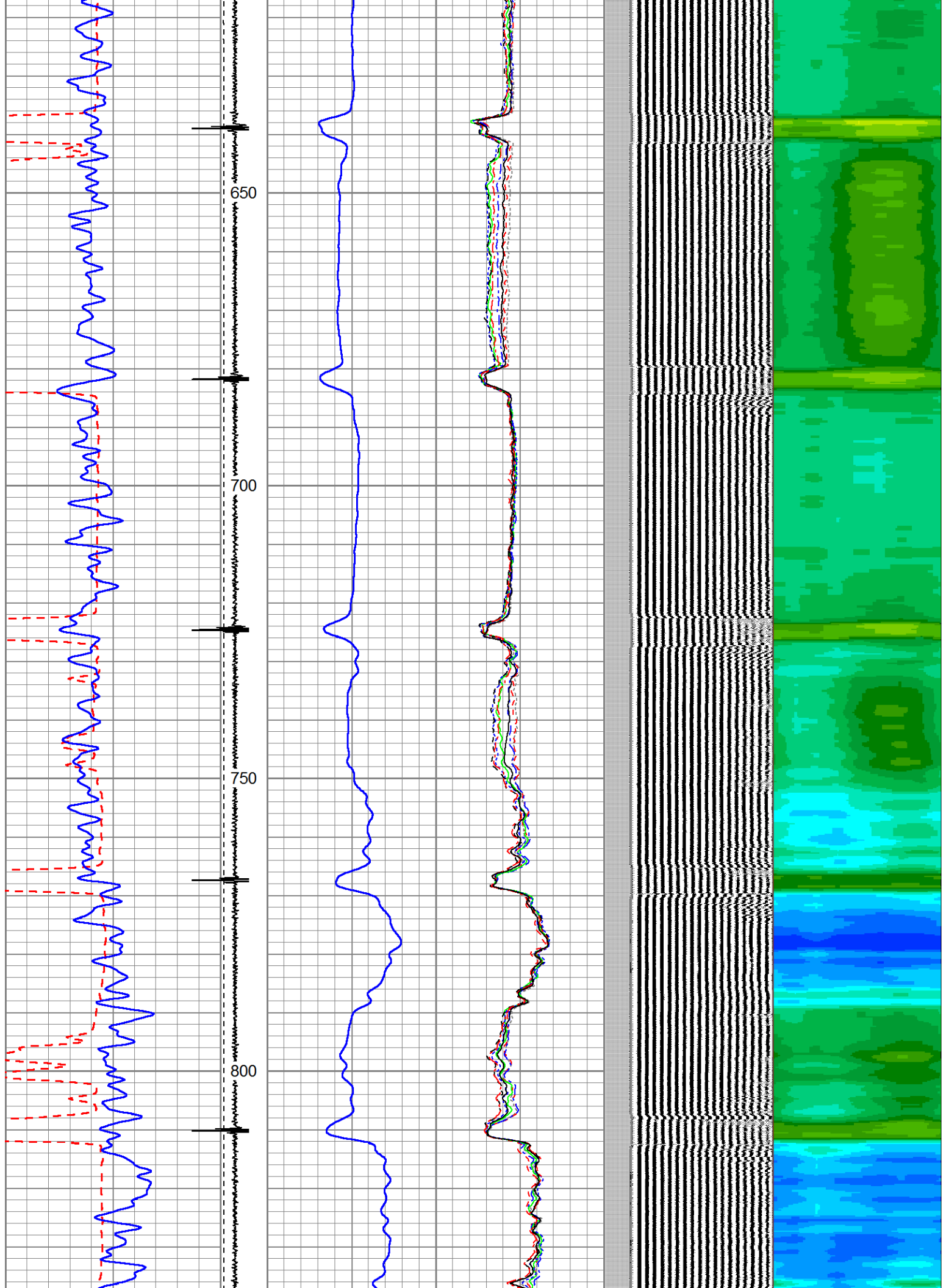
Database File: dechant d30-20d.db  
 Dataset Pathname: pass5  
 Presentation Format: rbl55  
 Dataset Creation: Mon Oct 14 10:47:05 2019 by Log 7.0 B1  
 Charted by: Depth in Feet scaled 1:240

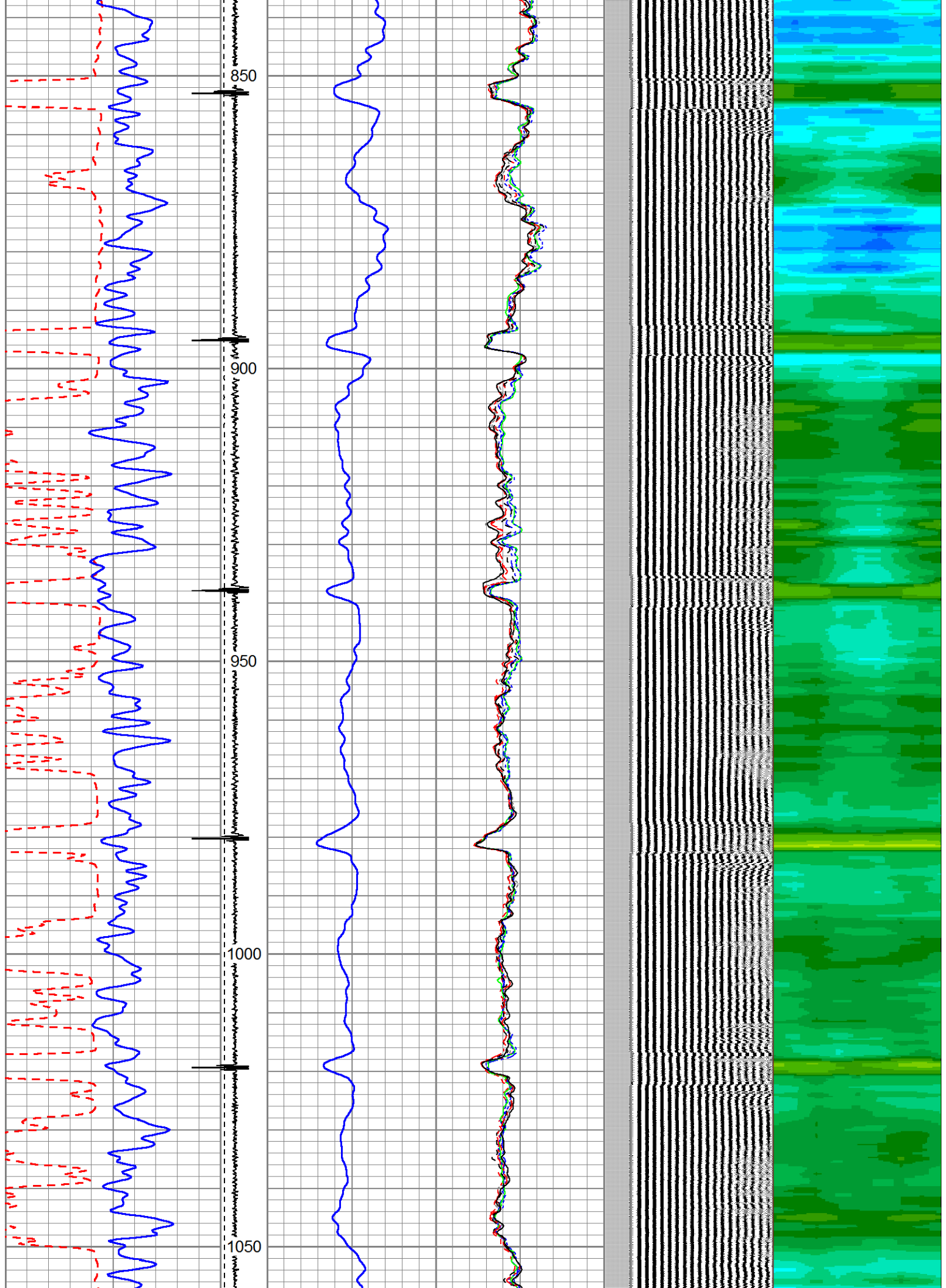
325	TT (usec)	225	LTEN	0	Amplitude (mV)	100	-5	AMPS2	150	200	VDL	1200	Cement Map
0	GR (GAPI)	200	(lb)	0	Amplified Amplitude	10	-5	AMPS3	150				1
			CCL <sup>000</sup>	0	(mV)	10	-5	AMPS4	150				100
							-5	AMPS5	150				
							-5	AMPS6	150				
							-5	AMPS7	150				
							-5	AMPS8	150				
							-5	AMPS1	150				

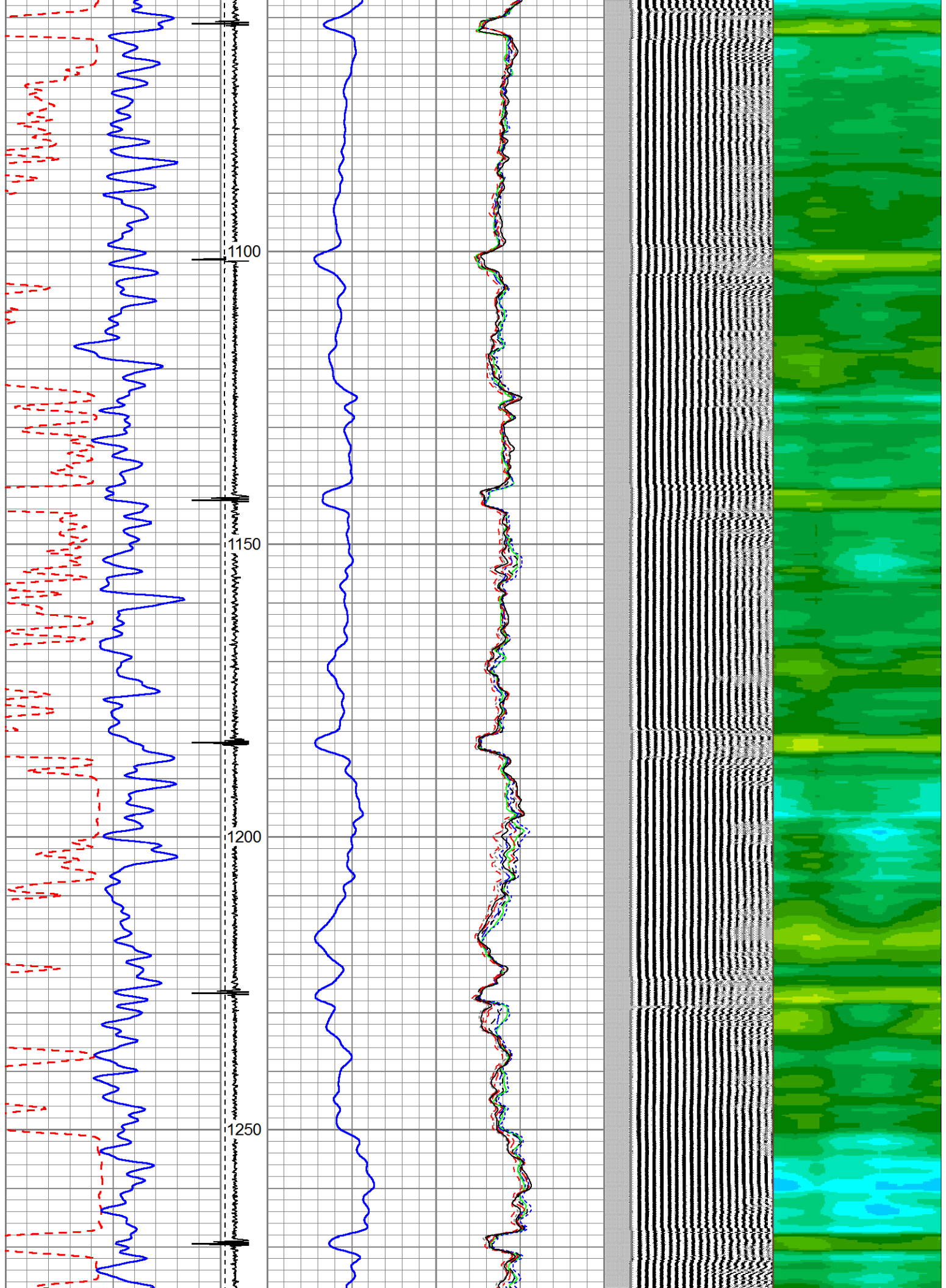


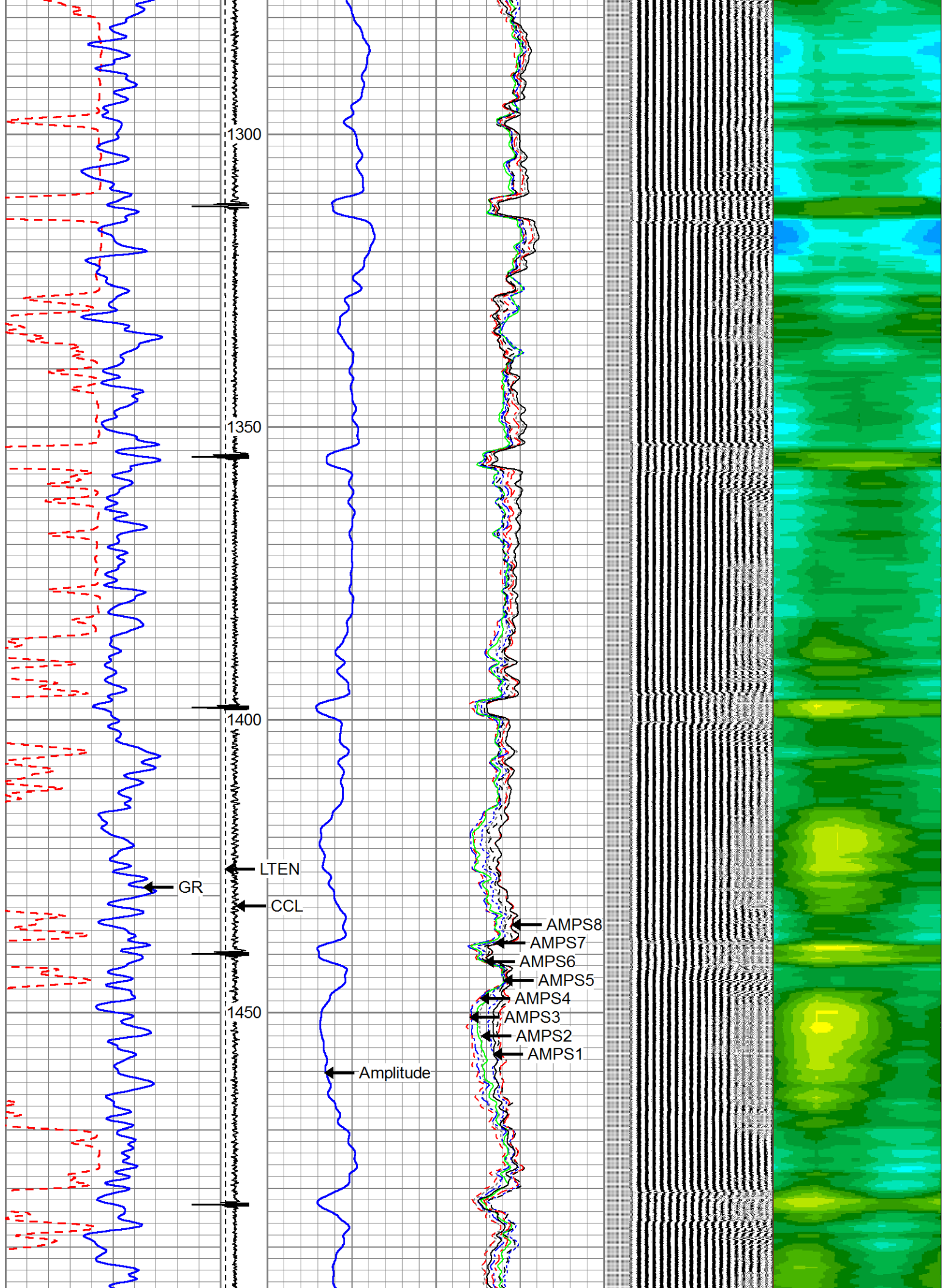


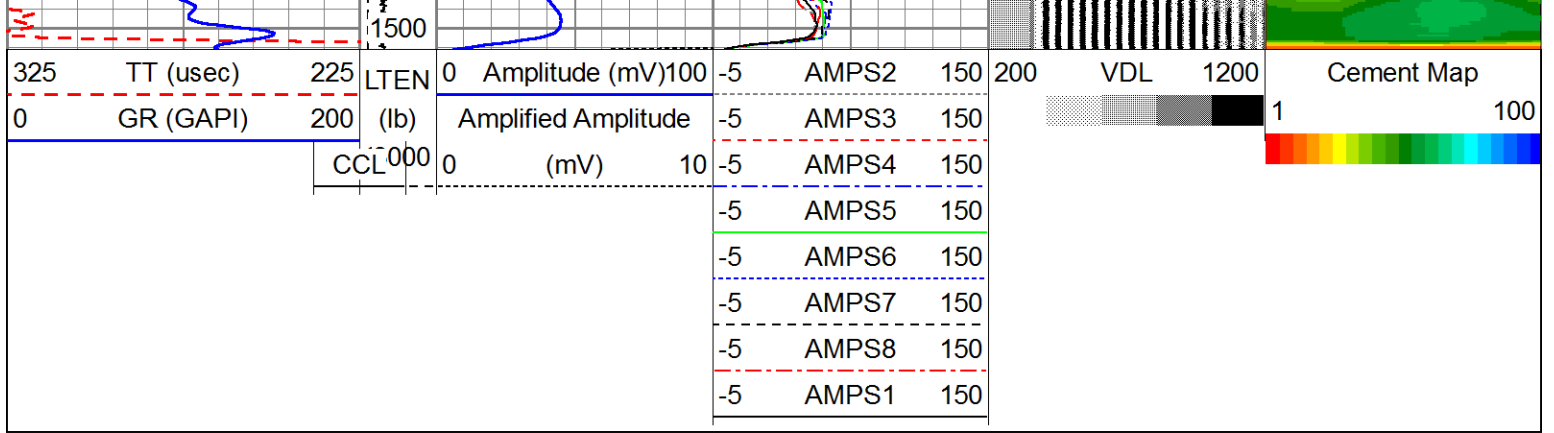












Company NOBLE ENERGY  
 Well DECHANT D30-20D  
 Field WATTENBERG  
 County WELD  
 State Colorado