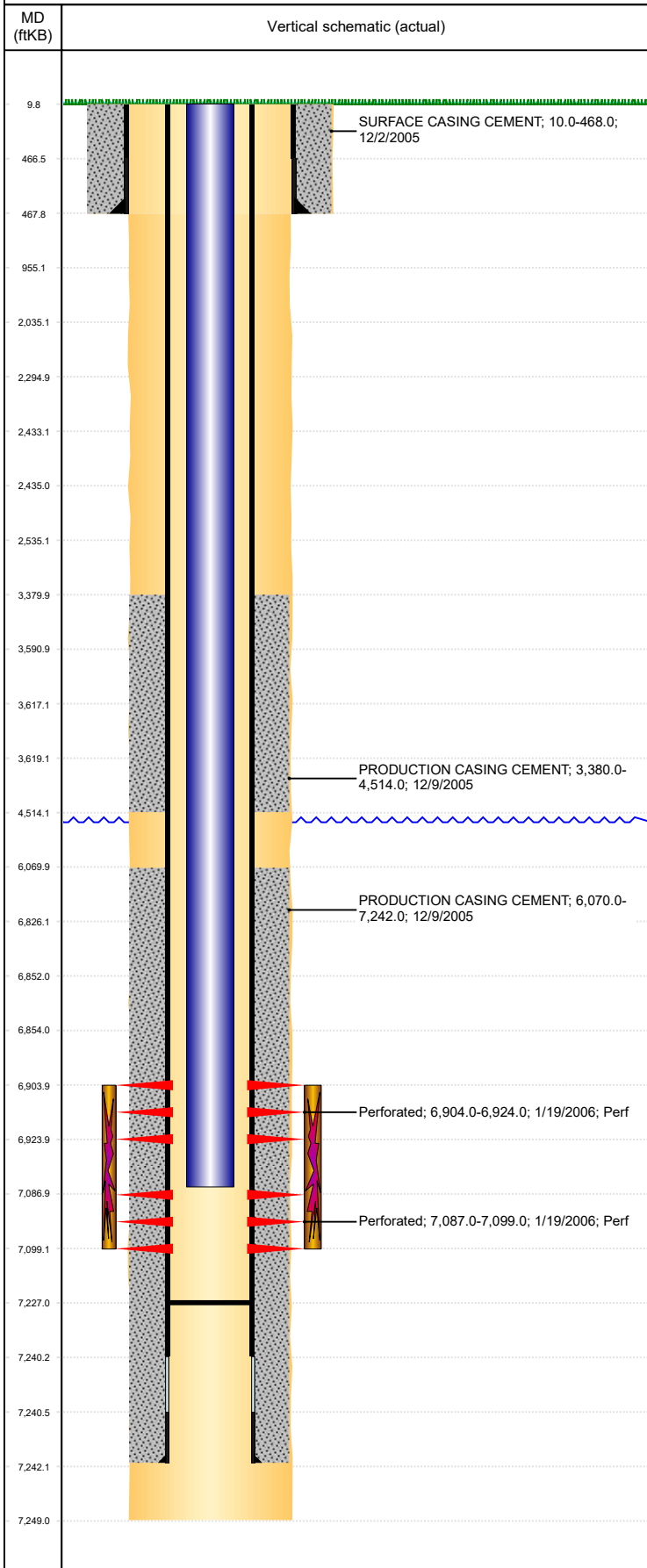


**Well Name: STEPHENSON 06-32**

VERTICAL, ORIGINAL HOLE, 10/14/2019 3:45:44 PM



Well Header									
API 05-123-22622		Business Unit DJ BASIN			District 15		Well Config VERTICAL		
KB - GL / MSL (ft... 10.00		Spud Date 12/1/2005		P & A Date		Well Production Status PR			SoRT No
Comment									
Surface Location (Congressional)									
Qtr 3 NW	Qtr 4 SW	Section 6	Twnshp 6	Twنش... N	Range 64	Rng E/... W	Actual Latitude (°) 40.51259000	Actual Longitude (°) -104.59914000	
Wellbore Sections									
Section Des			Size (in)			Act Top, MD (ftKB)		Act Btm, MD (ftKB)	
SURFACE			12 1/4			10		468	
PRODUCTION			7 7/8			468		7,249	
Casing Strings									
Csg Des			Run Date		OD (in)	Wt/Len (lb/ft)	Grade	Top, MD (ftKB)	MD (ftKB)
Surface			12/2/2005		8 5/8	24.00		10.0	468.0
Production			12/9/2005		4 1/2	11.60	LT&C	10.0	7,242.0
Cement									
Des					Start Date		Top (ftKB)		Btm (ftKB)
SURFACE CASING CEMENT					12/2/2005		10.0		468.0
PRODUCTION CASING CEMENT					12/9/2005		3,380.0		4,514.0
PRODUCTION CASING CEMENT					12/9/2005		6,070.0		7,242.0
Zone Statuses									
Zone Name		Status Date	Status	Fluid Type	Job			Prod Method	
NIOBRARA-CO...		9/19/2011	PR	Water	DRILLING/COMPLETION - ORIGINAL, 12/1/2005...			Flowing	
NIOBRARA-CO...		9/11/2017	PR						
CODELL		1/28/2006	PR	Water	DRILLING/COMPLETION - ORIGINAL, 12/1/2005...			Flowing	
CODELL		9/19/2011	PR						
NIOBRARA		1/28/2006	PR	Water	DRILLING/COMPLETION - ORIGINAL, 12/1/2005...			Flowing	
NIOBRARA		9/19/2011	PR						
Perforation Data									
Linked Zone			Bnch/Stg	Entered Shot Total	Top (ftKB)		Btm (ftKB)		Date
NIOBRARA, ORIGINAL HOLE			B	40	6,904.00		6,924.00		1/19/2006
CODELL, ORIGINAL HOLE				48	7,087.00		7,099.00		1/19/2006
Stimulation Intervals									
Zone				Start Date		Top (ftKB)		Btm (ftKB)	
NIOBRARA-CODELL, ORIGINAL HOLE				1/20/2006		6,904.0		7,099.0	
Other In Hole									
Run Date		Des				OD (in)	Top (ftKB)		Btm (ftKB)
3/27/2019		Plunger Lift				1 7/8			
Logs									
Date		Type				Top, MD (ftKB)		Btm, MD (ftKB)	
12/8/2005		COMPENSATED DENSITY				3,600.0		7,225.0	
12/8/2005		INDUCTION				472.0		7,245.0	
1/4/2006		CEMENT BOND				3,300.0		7,209.0	
9/18/2018		GYRO				10.0		7,000.0	
Plug Back Total Depths									
Date		Type		Com					Depth (ftKB)
1/4/2006		FILL		DEPTH LOGGER ON CBL					7,209.0
12/10/2006		FILL		CLEANOUT TO LAND TBG					7,227.0