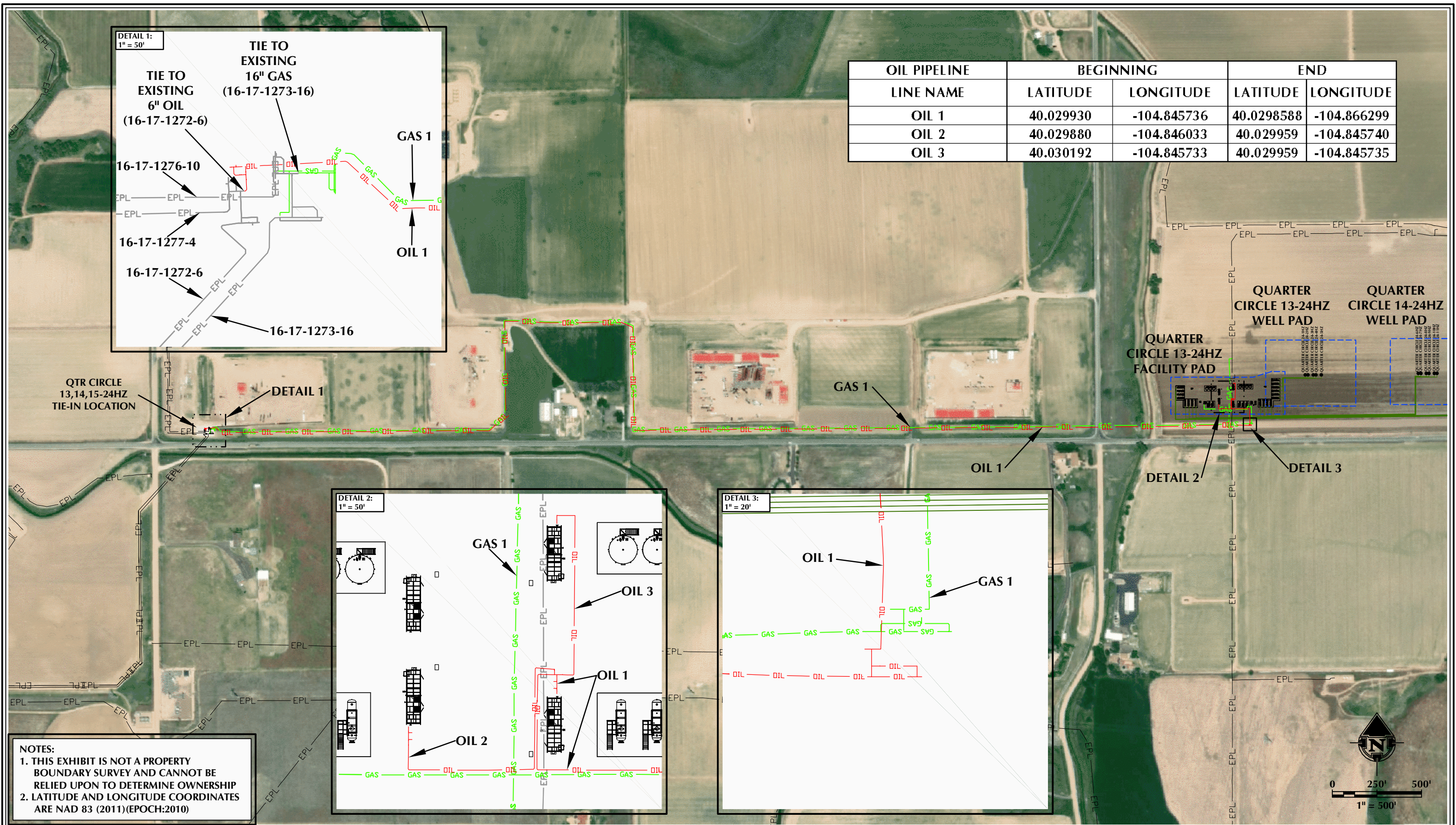


K:\ANADARKO\2018\2018.79_QTR_CIRCLE_13,14,15-24HZ_AS & WCDWG\RULE 44\QTR_CIRCLE_RULE_44.DWG, 12/7/2018 1:52:52 PM, Rls



OIL PIPELINE LINE NAME	BEGINNING		END	
	LATITUDE	LONGITUDE	LATITUDE	LONGITUDE
OIL 1	40.029930	-104.845736	40.0298588	-104.866299
OIL 2	40.029880	-104.846033	40.029959	-104.845740
OIL 3	40.030192	-104.845733	40.029959	-104.845735

NOTES:
1. THIS EXHIBIT IS NOT A PROPERTY BOUNDARY SURVEY AND CANNOT BE RELIED UPON TO DETERMINE OWNERSHIP
2. LATITUDE AND LONGITUDE COORDINATES ARE NAD 83 (2011)(EPOCH:2010)

LEGEND:

AS-BUILT WELL

AS-BUILT FLOWLINE

EXISTING PAD

GAS

OIL

EPL

AS-BUILT GAS PIPELINE

AS-BUILT OIL PIPELINE

EXISTING PIPELINE

DATA SOURCES:

-AERIAL COURTESY OF ESRI, INC.

REV.	DATE	DESCRIPTION
A	12/3/18	

LOVELAND OFFICE
6706 North Franklin Avenue
Loveland, Colorado 80538
Phone 970-776-4331

SHERIDAN OFFICE
1095 Saberton Avenue
Sheridan, Wyoming 82801
Phone 307-674-0609

CONSULTING, LLC

ANADARKO WATTENBERG
OIL COMPLEX, LLC.

1099 18TH STREET, SUITE 1800
DENVER, COLORADO 80202
TEL. (720) 929-6000

SCALE: 1" = 500'

DATE SURVEYED: 12/3/18

DATE: SCB

DRAFTER:

REVISED:

QUARTER CIRCLE 13,14,15-24HZ
OIL ROUTE

LOCATED IN SECTIONS 23 & 24
T1N, R67W, 6TH P.M.
WELD COUNTY, COLORADO