

# Golden Eagle 25N-1B-M IFR 0' to 15428' Definitive Survey Geodetic Report

## (Def Survey)

**Report Date:** August 29, 2019 - 08:49 AM  
**Client:** SRC Energy  
**Field:** CO, Weld County (NAD 83 NZ) - SRC  
**Structure / Slot:** SRC Energy 06-06N-66W (Golden Eagle 1-6 Pad) / Golden Eagle 25N-1B-M  
**Well:** Golden Eagle 25N-1B-M  
**Borehole:** Original Hole  
**UWI / API#:** Unknown / 05-123-50124  
**Survey Name:** Golden Eagle 25N-1B-M IFR 0' to 15428' Definitive  
**Survey Date:** May 22, 2019  
**Tort / AHD / DDI / ERD Ratio:** 223.047 ° / 9876.930 ft / 6.673 / 1.370  
**Coordinate Reference System:** NAD83 Colorado State Plane, Northern Zone, US Feet  
**Location Lat / Long:** N 40° 31' 13.01880", W 104° 48' 52.46640"  
**Location Grid N/E Y/X:** N 1433116.198 ftUS, E 3190557.633 ftUS  
**CRS Grid Convergence Angle:** 0.4429 °  
**Grid Scale Factor:** 0.99996789  
**Version / Patch:** 2.10.782.0

**Survey / DLS Computation:** Minimum Curvature / Lubinski  
**Vertical Section Azimuth:** 269.330 ° (True North)  
**Vertical Section Origin:** 0.000 ft, 0.000 ft  
**TVD Reference Datum:** KB 25ft  
**TVD Reference Elevation:** 4898.000 ft above MSL  
**Seabed / Ground Elevation:** 4873.000 ft above MSL  
**Magnetic Declination:** 7.590 °  
**Total Gravity Field Strength:** 999.0457mgn (9.80665 Based)  
**Gravity Model:** GARM  
**Total Magnetic Field Strength:** 52432.000 nT  
**Magnetic Dip Angle:** 66.890 °  
**Declination Date:** July 20, 2019  
**Magnetic Declination Model:** Surcon IFR  
**North Reference:** True North  
**Grid Convergence Used:** 0.0000 °  
**Total Corr Mag North→True North:** 7.5900 °  
**Local Coord Referenced To:** Well Head

Comments	MD (ft)	Incl (°)	Azim True (°)	TVD (ft)	VSEC (ft)	NS (ft)	EW (ft)	DLS (°/100ft)	Northing (ftUS)	Easting (ftUS)	Latitude (°)	Longitude (°)
Surface	0.00	0.00	0.00	0.00	0.00	0.00	0.00	N/A	1433116.20	3190557.63	40.520283	-104.814574
KB Adjustment	25.00	0.00	90.44	25.00	0.00	0.00	0.00	0.00	1433116.20	3190557.63	40.520283	-104.814574
Begin IFR Survey	109.00	0.40	90.44	109.00	-0.29	0.00	0.29	0.48	1433116.20	3190557.93	40.520283	-104.814573
	199.00	0.13	145.47	199.00	-0.66	-0.09	0.67	0.38	1433116.11	3190558.30	40.520283	-104.814572
	289.00	1.07	122.17	288.99	-1.43	-0.62	1.43	1.06	1433115.59	3190559.07	40.520281	-104.814569
	379.00	3.62	127.09	378.91	-4.38	-2.78	4.41	2.84	1433113.45	3190562.07	40.520275	-104.814558
	469.00	4.42	127.99	468.69	-9.33	-6.63	9.41	0.89	1433109.64	3190567.10	40.520265	-104.814540
	559.00	5.56	130.42	558.35	-15.33	-11.59	15.47	1.29	1433104.73	3190573.19	40.520251	-104.814518
	649.00	7.38	135.85	647.77	-22.59	-18.57	22.81	2.13	1433097.81	3190580.59	40.520232	-104.814492
	739.00	9.24	135.51	736.82	-31.57	-27.87	31.90	2.07	1433088.58	3190589.75	40.520207	-104.814459
	829.00	11.01	134.63	825.42	-42.62	-39.06	43.08	1.97	1433077.47	3190601.01	40.520176	-104.814419
	919.00	12.85	132.85	913.47	-55.93	-51.91	56.54	2.08	1433064.73	3190614.57	40.520141	-104.814371
	1009.00	13.44	132.37	1001.11	-70.83	-65.76	71.60	0.67	1433050.99	3190629.74	40.520102	-104.814316
	1099.00	13.04	132.63	1088.72	-85.86	-79.69	86.80	0.45	1433037.19	3190645.04	40.520064	-104.814262
	1189.00	13.43	133.30	1176.33	-100.77	-93.73	101.88	0.47	1433023.26	3190660.23	40.520026	-104.814208
	1279.00	14.01	132.74	1263.76	-116.21	-108.29	117.48	0.66	1433008.82	3190675.95	40.519986	-104.814151
	1369.00	13.56	133.79	1351.17	-131.65	-122.99	133.10	0.57	1432994.25	3190691.68	40.519945	-104.814095
	1459.00	14.88	132.26	1438.41	-147.65	-138.06	149.27	1.52	1432979.30	3190707.96	40.519904	-104.814037
	1549.00	14.51	132.97	1525.46	-164.27	-153.52	166.07	0.46	1432963.97	3190724.88	40.519862	-104.813977
	1639.00	14.41	131.95	1612.61	-180.67	-168.69	182.65	0.30	1432948.93	3190741.58	40.519820	-104.813917
	1729.00	13.93	131.79	1699.87	-196.90	-183.39	199.06	0.54	1432934.35	3190758.10	40.519780	-104.813858
Last IFR Survey 9 5/8" Casing Begin	1774.00	13.32	132.41	1743.61	-204.68	-190.50	206.92	1.39	1432927.31	3190766.02	40.519760	-104.813830
SLB_MWD Survey	1825.00	13.39	132.20	1793.23	-213.30	-198.43	215.64	0.16	1432919.45	3190774.79	40.519738	-104.813798
	1895.00	13.48	131.92	1861.31	-225.25	-209.32	227.71	0.16	1432908.65	3190786.95	40.519708	-104.813755
	1984.00	14.51	126.96	1947.67	-241.71	-222.96	244.34	1.78	1432895.14	3190803.68	40.519671	-104.813695
	2074.00	14.57	115.17	2034.81	-260.84	-234.55	263.60	3.28	1432883.70	3190823.03	40.519639	-104.813626
	2163.00	14.69	136.09	2120.98	-278.65	-247.45	281.57	5.91	1432870.94	3190841.09	40.519604	-104.813561
	2253.00	15.11	163.15	2208.06	-289.75	-266.93	292.89	7.68	1432851.55	3190852.57	40.519550	-104.813521
	2342.00	14.35	129.06	2294.30	-301.49	-285.01	304.84	9.64	1432833.56	3190864.66	40.519501	-104.813478
	2432.00	14.87	127.78	2381.39	-319.11	-299.11	322.63	0.68	1432819.60	3190882.56	40.519462	-104.813414
	2521.00	14.31	127.35	2467.52	-336.72	-312.78	340.40	0.64	1432806.07	3190900.43	40.519424	-104.813350
	2701.00	14.66	128.04	2641.79	-372.02	-340.31	376.02	0.22	1432778.81	3190936.26	40.519349	-104.813222
	2790.00	14.24	128.84	2727.98	-389.25	-354.12	393.42	0.52	1432765.14	3190953.77	40.519311	-104.813159
	2880.00	13.87	126.62	2815.29	-406.37	-367.50	410.70	0.73	1432751.90	3190971.15	40.519274	-104.813097
	2969.00	14.61	128.40	2901.55	-423.58	-380.83	428.06	0.97	1432738.70	3190988.61	40.519238	-104.813034
	3059.00	14.76	127.92	2988.61	-441.35	-394.93	446.00	0.21	1432724.74	3191006.66	40.519199	-104.812970
	3149.00	14.84	126.22	3075.62	-459.53	-408.78	464.34	0.49	1432711.03	3191025.10	40.519161	-104.812904
	3239.00	14.78	127.32	3162.64	-477.79	-422.55	482.77	0.32	1432697.40	3191043.64	40.519123	-104.812838
	3328.00	14.76	129.05	3248.69	-495.46	-436.58	500.60	0.50	1432683.52	3191061.58	40.519085	-104.812773
	3418.00	15.10	128.39	3335.66	-513.38	-451.08	518.69	0.42	1432669.15	3191079.78	40.519045	-104.812708
	3508.00	15.04	128.91	3422.56	-531.49	-465.70	536.97	0.16	1432654.68	3191098.17	40.519005	-104.812643
	3597.00	14.99	127.53	3508.52	-549.43	-479.96	555.08	0.41	1432640.56	3191116.39	40.518966	-104.812578
	3687.00	14.39	127.91	3595.58	-567.32	-493.92	573.14	0.68	1432626.74	3191134.55	40.518927	-104.812513
	3777.00	14.95	128.02	3682.65	-585.12	-507.94	591.10	0.62	1432612.85	3191152.63	40.518889	-104.812448
	3867.00	14.98	127.92	3769.59	-603.28	-522.24	609.43	0.04	1432598.70	3191171.06	40.518850	-104.812382
	3956.00	15.17	127.27	3855.53	-621.45	-536.36	627.77	0.29	1432584.72	3191189.51	40.518811	-104.812316
	4046.00	15.02	128.18	3942.43	-639.82	-550.70	646.30	0.31	1432570.52	3191208.15	40.518771	-104.812249
	4135.00	14.59	127.35	4028.47	-657.63	-564.63	664.28	0.54	1432556.73	3191226.24	40.518733	-104.812185
	4225.00	14.70	127.54	4115.55	-675.54	-578.47	682.35	0.13	1432543.04	3191244.41	40.518695	-104.812120
	4315.00	14.94	127.62	4202.55	-693.61	-592.51	700.59	0.27	1432529.14	3191262.76	40.518657	-104.812054
	4404.00	14.91	127.49	4288.55	-711.62	-606.48	718.76	0.05	1432515.31	3191281.04	40.518618	-104.811989
	4494.00	14.91	126.77	4375.52	-729.92	-620.46	737.22	0.21	1432501.48	3191299.61	40.518580	-104.811922
	4584.00	14.80	130.37	4462.51	-747.78	-634.83	755.26	1.03	1432487.24	3191317.75	40.518540	-104.811858
	4673.00	15.10	128.56	4548.50	-765.34	-649.42	772.98	0.62	1432472.79	3191335.59	40.518500	-104.811794
	4763.00	14.32	131.02	4635.55	-782.73	-664.04	790.55	1.11	1432458.31	3191353.26	40.518460	-104.811731
	4853.00	14.80	128.70	4722.66	-799.93	-678.53	807.92	0.84	1432443.96	3191370.74	40.518421	-104.811668
	4942.00	14.95	128.92	4808.68	-817.56	-692.85	825.72	0.18	1432429.78	3191388.66	40.518381	-104.811604
	5032.00	14.86	129.27	4895.65	-835.36	-707.45	843.69	0.14	1432415.32	3191406.73	40.518341	-104.811540
	5122.00	14.86	129.15	4982.64	-853.07	-722.04	861.57	0.03	1432400.87	3191424.73	40.518301	-104.811475
	5212.00	15.00	129.13	5069.60	-870.88	-736.67	879.55	0.16	1432386.37	3191442.83	40.518261	-104.811411
	5301.00	14.59	129.51	5155.65	-888.29	-751.07	897.14	0.47	1432372.11	3191460.52	40.518221	-104.811347
	5391.00	14.80	128.99	5242.71	-905.80	-765.52	914.82	0.28	1432357.80	3191478.31	40.518182	-104.811284
	5480.00	14.90	128.89	5328.74	-923.38	-779.85	932.56	0.12	1432343.60	3191496.16	40.518142	-104.811220
	5570.00	14.34	127.46	5415.82	-941.06	-793.90	950.41	0.74	1432329.70	3191514.12	40.518104	-104.811156
	5659.00	14.81	127.37	5501.96	-958.69	-807.51	968.20	0.53	1432316.23	3191532.01	40.518066	-104.811092
	5749.00	14.87	126.70	5588.96	-976.93	-821.39	986.60	0.20	1432302.49	3191550.52	40.518028	-104.811026
	5838.00	14.39	127.43	5675.07	-994.71	-834.93	1004.54	0.58	1432289.08	3191568.56	40.517991	-104.810961
	5927.00	14.15	127.61	5761.32	-1011.95	-848.30	1021.94	0.27	1432275.86	3191586.06	40.517955	-104.810898
	6017.00	13.39	124.69	5848.74	-1029.09	-860.94	1039.22	1.14	1432263.34	3191603.45	40.517920	-104.810836
	6106.00	15.05	126.98	5935.01	-1046.64	-873.76	1056.93	1.97	1432250.67	3191621.25	40.517885	-104.810773
	6196.00	15.16	127.12	6021.90	-1065.19	-887.89	1075.65	0.13	1432236.68	3191640.07	40.517846	-104.810705
	6286.00	15.25	128.12	6108.75	-1083.72	-902.30	1094.34	0.31	1432222.42	3191658.88	40.517806	-104.810638
	6375.00	15.16	128.17	6194.63	-1101.90	-916.71	1112.70	0.10	1432208.14	3191677.35	40.517767	-104.810572
	6464.00	15.10	128.10	6280.54	-1120.04	-931.09	1131.01	0.02	1432193.91	3191695.76	40.517727	

Comments	MD (ft)	Incl (°)	Azim True (°)	TVD (ft)	VSEC (ft)	NS (ft)	EW (ft)	DLS (°/100ft)	Northing (ftUS)	Easting (ftUS)	Latitude (°)	Longitude (°)
	6643.00	9.87	175.33	6454.76	-1144.63	-961.97	1155.96	10.00	1432163.23	3191720.95	40.517642	-104.810416
	6733.00	12.95	195.27	6543.01	-1142.40	-979.40	1153.93	5.51	1432145.78	3191719.06	40.517595	-104.810424
	6822.00	17.64	209.77	6628.86	-1132.82	-1000.74	1144.60	6.76	1432124.37	3191709.89	40.517536	-104.810457
	6912.00	22.42	225.63	6713.46	-1113.48	-1024.61	1125.54	8.00	1432100.35	3191691.02	40.517471	-104.810526
	7001.00	26.00	242.18	6794.71	-1083.80	-1045.61	1096.11	8.58	1432079.12	3191661.75	40.517413	-104.810632
	7091.00	29.84	255.26	6874.29	-1044.48	-1060.54	1056.95	8.01	1432063.90	3191622.72	40.517372	-104.810773
	7180.00	37.96	260.49	6948.12	-995.86	-1070.71	1008.45	9.69	1432053.35	3191574.30	40.517344	-104.810947
	7270.00	46.08	264.27	7014.94	-936.12	-1078.54	948.79	9.45	1432045.06	3191514.70	40.517323	-104.811162
	7360.00	54.82	264.26	7072.19	-867.06	-1085.46	879.81	9.71	1432037.60	3191445.78	40.517304	-104.811410
	7449.00	60.77	264.15	7119.60	-792.08	-1093.07	804.92	6.69	1432029.42	3191370.95	40.517283	-104.811679
	7538.00	68.14	265.34	7157.95	-712.10	-1100.39	725.01	8.37	1432021.48	3191291.11	40.517263	-104.811966
	7628.00	75.09	267.51	7186.33	-626.86	-1105.68	639.83	8.05	1432015.53	3191205.97	40.517248	-104.812273
	7717.00	82.37	269.99	7203.71	-539.64	-1107.56	552.63	8.62	1432012.98	3191118.79	40.517243	-104.812586
	7807.00	90.99	272.36	7208.92	-449.93	-1105.71	462.89	9.93	1432014.14	3191029.04	40.517248	-104.812909
	7896.00	91.59	271.25	7206.91	-361.04	-1102.91	373.96	1.42	1432016.25	3190940.10	40.517256	-104.813229
	7986.00	91.62	269.61	7204.39	-271.09	-1102.23	284.00	1.82	1432016.23	3190850.14	40.517258	-104.813553
	8075.00	91.99	269.94	7201.59	-182.14	-1102.58	195.05	0.56	1432015.19	3190761.19	40.517257	-104.813872
	8165.00	91.89	269.33	7198.54	-92.20	-1103.15	105.10	0.69	1432013.93	3190671.26	40.517255	-104.814196
	8254.00	92.08	270.08	7195.46	-3.25	-1103.61	16.16	0.87	1432012.78	3190582.32	40.517254	-104.814516
	8344.00	92.38	270.48	7191.96	86.67	-1103.17	-73.77	0.56	1432012.52	3190492.39	40.517255	-104.814839
	8433.00	92.11	269.61	7188.47	175.59	-1103.10	-162.70	1.02	1432011.91	3190403.47	40.517255	-104.815159
	8523.00	92.32	269.95	7184.99	265.52	-1103.45	-252.64	0.44	1432010.87	3190313.54	40.517254	-104.815483
	8612.00	90.80	269.47	7182.57	354.48	-1103.90	-341.60	1.79	1432009.73	3190224.59	40.517253	-104.815803
	8702.00	90.64	269.20	7181.44	444.48	-1104.94	-431.59	0.35	1432007.99	3190134.62	40.517250	-104.816126
	8791.00	90.53	269.36	7180.53	533.47	-1106.06	-520.57	0.22	1432006.18	3190045.64	40.517247	-104.816446
	8881.00	90.66	269.46	7179.60	623.47	-1106.99	-610.56	0.18	1432004.56	3189955.66	40.517244	-104.816770
	8970.00	91.76	270.10	7177.72	712.44	-1107.33	-699.54	1.43	1432003.53	3189866.70	40.517244	-104.817090
	9060.00	90.91	268.91	7175.62	802.42	-1108.11	-789.51	1.62	1432002.06	3189776.74	40.517241	-104.817414
	9149.00	90.93	269.21	7174.19	891.40	-1109.57	-878.49	0.34	1431999.91	3189687.78	40.517237	-104.817734
	9238.00	91.03	269.57	7172.67	980.39	-1110.52	-967.47	0.42	1431998.28	3189598.81	40.517235	-104.818054
	9328.00	91.51	270.44	7170.67	1070.36	-1110.51	-1057.45	1.10	1431997.59	3189508.84	40.517235	-104.818377
	9417.00	91.18	269.39	7168.58	1159.33	-1110.64	-1146.42	1.24	1431996.77	3189419.87	40.517234	-104.818697
	9507.00	91.00	269.02	7166.87	1249.31	-1111.89	-1236.40	0.46	1431994.82	3189329.91	40.517231	-104.819021
	9596.00	90.56	268.26	7165.66	1338.30	-1114.00	-1325.36	0.99	1431992.02	3189240.97	40.517225	-104.819341
	9686.00	91.75	270.09	7163.85	1428.27	-1115.30	-1415.33	2.43	1431990.03	3189151.02	40.517222	-104.819664
	9775.00	90.76	268.51	7161.90	1517.25	-1116.38	-1504.30	2.09	1431988.26	3189062.06	40.517219	-104.819984
	9865.00	90.83	268.82	7160.65	1607.23	-1118.48	-1594.26	0.35	1431985.47	3188972.12	40.517213	-104.820308
	9954.00	90.61	268.70	7159.53	1696.22	-1120.41	-1683.24	0.28	1431982.85	3188883.17	40.517208	-104.820628
	10044.00	91.00	269.59	7158.27	1786.21	-1121.75	-1773.22	1.08	1431980.81	3188793.20	40.517204	-104.820952
	10133.00	91.47	269.87	7156.35	1875.19	-1122.17	-1862.19	0.61	1431979.71	3188704.23	40.517203	-104.821272
	10223.00	91.23	270.17	7154.23	1965.16	-1122.14	-1952.17	0.43	1431979.04	3188614.26	40.517203	-104.821595
	10312.00	91.23	269.35	7152.32	2054.13	-1122.51	-2041.15	0.92	1431977.98	3188525.29	40.517202	-104.821915
	10402.00	91.10	269.27	7150.49	2144.11	-1123.59	-2131.12	0.17	1431976.20	3188435.33	40.517199	-104.822239
	10491.00	91.24	269.72	7148.67	2233.09	-1124.38	-2220.10	0.53	1431974.73	3188346.37	40.517196	-104.822559
	10580.00	91.49	269.80	7146.55	2322.07	-1124.75	-2309.07	0.29	1431973.67	3188257.40	40.517195	-104.822879
	10670.00	90.25	269.95	7145.18	2412.05	-1124.95	-2399.06	1.39	1431972.78	3188167.42	40.517195	-104.823203
	10759.00	90.02	269.38	7144.97	2501.05	-1125.47	-2488.06	0.69	1431971.57	3188078.43	40.517193	-104.823523
	10849.00	90.31	269.95	7144.71	2591.05	-1125.99	-2578.06	0.71	1431970.35	3187988.45	40.517192	-104.823846
	10938.00	90.36	269.81	7144.19	2680.04	-1126.18	-2667.05	0.17	1431969.48	3187899.45	40.517191	-104.824166
	11028.00	90.32	269.59	7143.66	2770.04	-1126.65	-2757.05	0.25	1431968.31	3187809.47	40.517190	-104.824490
	11117.00	89.75	269.66	7143.60	2859.04	-1127.23	-2846.05	0.65	1431967.04	3187720.48	40.517188	-104.824810
	11207.00	89.71	269.60	7144.03	2949.03	-1127.81	-2936.05	0.08	1431965.76	3187630.49	40.517187	-104.825134
	11296.00	89.87	269.95	7144.36	3038.03	-1128.16	-3025.04	0.43	1431964.72	3187541.50	40.517186	-104.825454
	11385.00	89.84	269.71	7144.58	3127.03	-1128.43	-3114.04	0.27	1431963.77	3187452.51	40.517185	-104.825774
	11475.00	89.94	269.99	7144.75	3217.02	-1128.66	-3204.04	0.33	1431962.84	3187362.52	40.517184	-104.826098
	11564.00	89.73	269.66	7145.01	3306.02	-1128.94	-3293.04	0.44	1431961.88	3187273.53	40.517184	-104.826418
	11654.00	89.25	269.29	7145.81	3396.01	-1129.76	-3383.03	0.67	1431960.36	3187183.55	40.517181	-104.826742
	11744.00	89.74	269.77	7146.60	3486.01	-1130.50	-3473.03	0.76	1431958.93	3187093.57	40.517179	-104.827065
	11833.00	89.40	269.62	7147.27	3575.00	-1130.97	-3562.02	0.42	1431957.77	3187004.58	40.517178	-104.827385
	11923.00	90.34	269.87	7147.48	3665.00	-1131.37	-3652.02	1.08	1431956.67	3186914.59	40.517177	-104.827709
	12013.00	90.56	270.28	7146.77	3754.99	-1131.25	-3742.02	0.52	1431956.09	3186824.62	40.517177	-104.828033
	12103.00	90.28	269.42	7146.11	3844.98	-1131.49	-3832.01	1.00	1431955.16	3186734.61	40.517176	-104.828356
	12192.00	90.34	270.39	7145.63	3933.98	-1131.64	-3921.01	1.09	1431954.33	3186645.62	40.517176	-104.828676
	12282.00	90.30	269.75	7145.13	4023.97	-1131.53	-4011.01	0.71	1431953.74	3186555.63	40.517176	-104.829000
	12372.00	90.17	269.69	7144.76	4113.96	-1131.97	-4101.01	0.16	1431952.60	3186465.64	40.517175	-104.829324
	12461.00	89.81	269.42	7144.77	4202.96	-1132.66	-4190.01	0.51	1431951.23	3186376.65	40.517173	-104.829644
	12551.00	90.07	269.45	7144.87	4292.96	-1133.55	-4280.00	0.29	1431949.64	3186286.67	40.517171	-104.829968
	12640.00	89.66	269.33	7145.08	4381.96	-1134.49	-4369.00	0.48	1431948.01	3186197.69	40.517168	-104.830288
	12729.00	89.84	268.94	7145.46	4470.96	-1135.84	-4457.98	0.48	1431945.98	3186108.71	40.517164	-104.830608
	12819.00	90.83	269.81	7144.94	4560.96	-1136.82	-4547.97	1.46	1431944.30	3186018.74	40.517161	-104.830931
	12908.00	90.54	269.24	7143.87	4649.95	-1137.56	-4636.97	0.72	1431942.87	3185928.76	40.517159	-104.831251
	12998.00	90.22	268.98	7143.28	4739.95	-1138.95	-4726.95	0.46	1431940.78	3185838.79	40.517156	-104.831575
	13087.00	90.54	269.34	7142.69	4828.94	-1140.26	-4815.94	0.54	1431938.79	3185750.81	40.517152	-104.831895
	13177.00	90.26	269.23	7142.06	4918.94	-1141.38	-4905.93	0.33	1431936.97	3185660.84	40.517149	-104.832219
	13267.00	90.47	269.52	7141.48	5008.94	-1142.36	-4995.92	0.40	1431935.29	3185570.86	40.517146	-104.832542
	13356.00	90.60	269.64	7140.65	5097.94	-1143.02	-5084.92	0.20	1431933.55	3185481.88	40.517144	-104.832863
	13446.00	90.46	269.53	7139.82	5187.93	-1143.67	-5174.91	0.20	1431932.60	3185391.89	40.517142	-104.833186
	13536.00	90.36	268.52	7139.18	5277.93							

Comments	MD (ft)	Incl (°)	Azim True (°)	TVD (ft)	VSEC (ft)	NS (ft)	EW (ft)	DLS (°/100ft)	Northing (ftUS)	Easting (ftUS)	Latitude (°)	Longitude (°)
Survey Program:												
Description	Part	MD From (ft)	MD To (ft)	EOU Freq (ft)	Hole Size	Casing Diameter (in)	Survey Tool Type	Borehole / Survey				
	1	0.000	25.000	1/98.425	13.500	9.625	NAL_MWD_IFR1-Depth Only	Original Hole / Golden Eagle 25N-1B-M IFR 0' to 15428' Definitive				
	1	25.000	25.000	Act Stns	13.500	9.625	NAL_MWD_IFR1-Depth Only	Original Hole / Golden Eagle 25N-1B-M IFR 0' to 15428' Definitive				
	1	25.000	1825.000	Act Stns	13.500	9.625	NAL_MWD_IFR1	Original Hole / Golden Eagle 25N-1B-M IFR 0' to 15428' Definitive				
	1	1825.000	15428.000	Act Stns	8.500	5.500	NAL_MWD_IFR1+MS	Original Hole / Golden Eagle 25N-1B-M IFR 0' to 15428' Definitive				



# SRC Energy

# Schlumberger

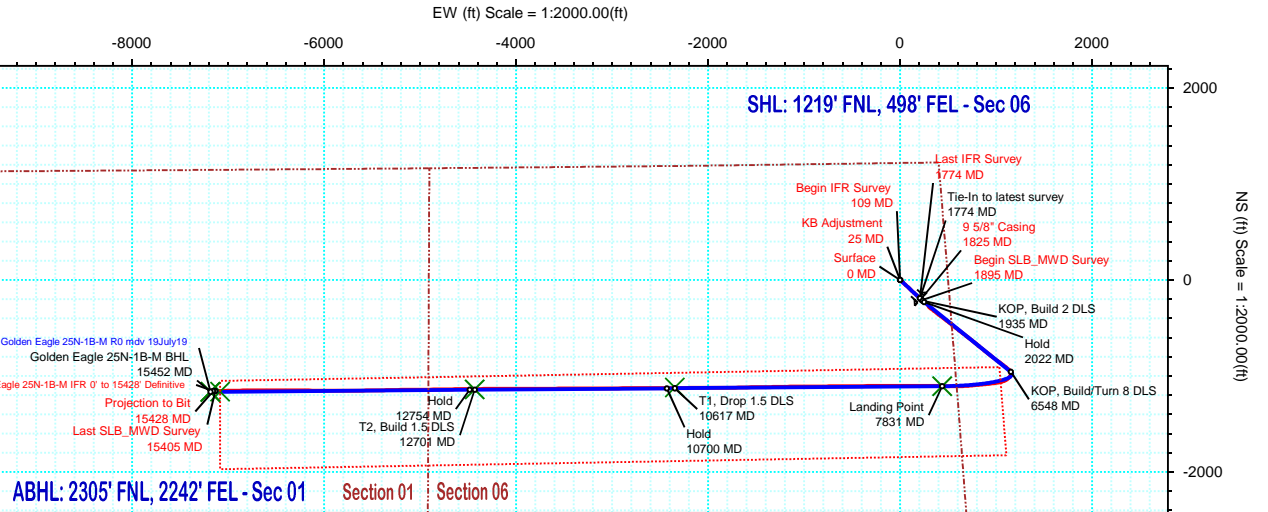
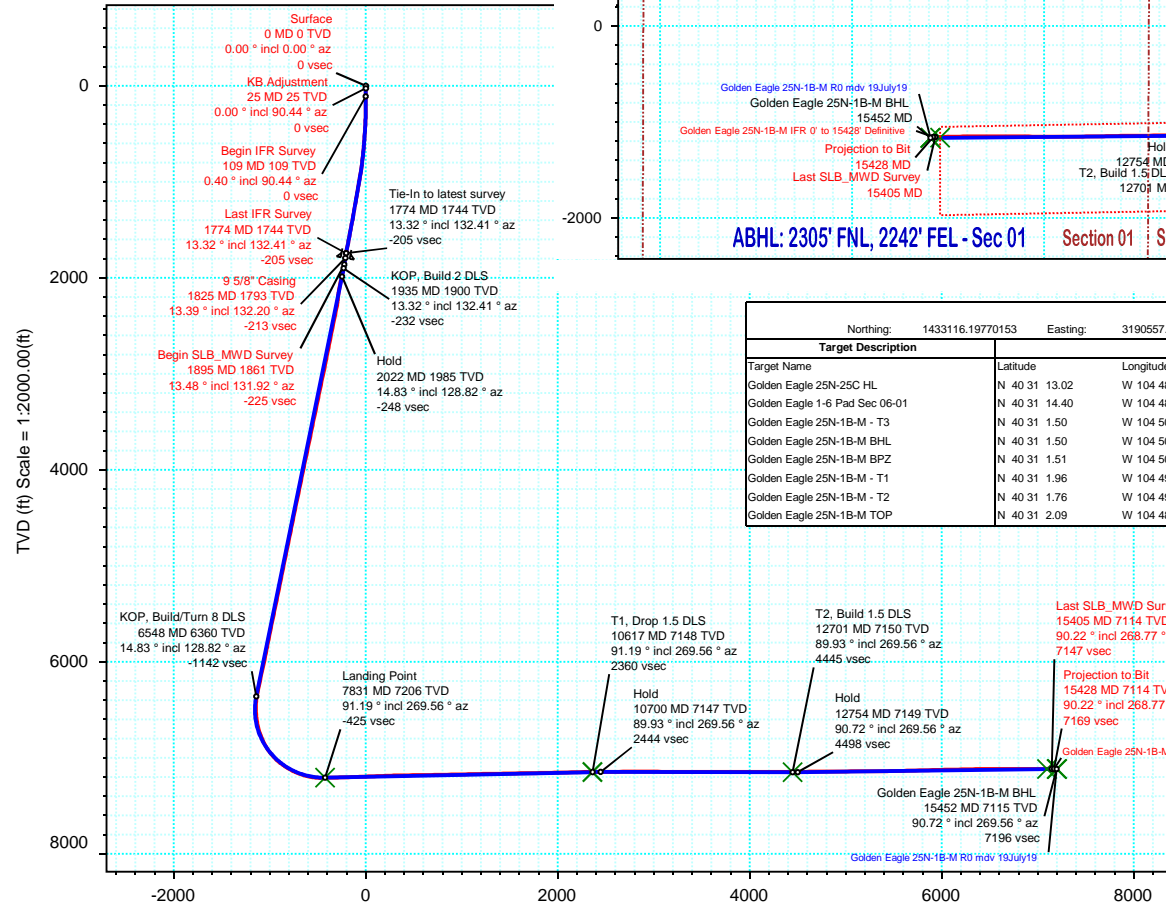
Borehole:	Well:	Field:	Structure:
Original Hole	Golden Eagle 25N-1B-M	CO, Weld County (NAD 83 NZ) - SRC	SRC Energy 06-06N-66W (Golden Eagle 1-6 Pad)

Gravity & Magnetic Parameters				Surface Location				Miscellaneous			
Model:	Surcon IFR	Dip:	66.89°	Date:	20-Jul-2019	Lat:	N 40 31 13.02	Northing:	1433116.2ftUS	Grid Conv:	0.4429°
MagDec:	7.59°	FS:	52432NT	Gravity FS:	999.046mgn (9.80665 Based)	Lon:	W 104 48 52.47	Easting:	3190557.63ftUS	Scale Fact:	0.99996789
								Slot:	Golden Eagle 25N-1B-M	TVD Ref:	KB 25ft(4898ft above MSL)
								Plan:	Golden Eagle 25N-1B-M IFR 0' to 15428' Definitive		

## Final PvA



True North  
Tot Corr (M->T 7.590°)  
Mag Dec (7.590°)  
Grid Conv (0.443°)



Surface Location										
Northing: 1433116.19770153		Easting: 3190557.63325567		Latitude: N 40 31 13.02		Longitude: W 104 48 52.47		VSec Azimuth: 269.33		
Target Description		Grid Coord					Local Coord			
Target Name		Latitude	Longitude	Northing	Easting	TVD	VSec	N(+)/S(-)	E(+)/W(-)	
Golden Eagle 25N-25C HL		N 40 31 13.02	W 104 48 52.47	1433116.20	3190557.63	4898.00	0.00	0.00	0.00	
Golden Eagle 1-6 Pad Sec 06-01		N 40 31 14.40	W 104 48 52.61	1433255.63	3190545.16	4898.00	9.77	139.53	-11.40	
Golden Eagle 25N-1B-M - T3		N 40 31 1.50	W 104 50 25.53	14715072.54	1684766.93	7115.20	7200.68	-1165.08	-7187.55	
Golden Eagle 25N-1B-M BHL		N 40 31 1.50	W 104 50 25.47	1431896.34	3183384.24	7115.27	7195.98	-1164.41	-7182.85	
Golden Eagle 25N-1B-M BPZ		N 40 31 1.51	W 104 50 24.18	1431898.18	3183484.04	7116.52	7096.16	-1163.35	-7083.04	
Golden Eagle 25N-1B-M - T1		N 40 31 1.96	W 104 49 22.86	14715128.70	1689604.98	7148.00	2360.39	-1119.07	-2347.46	
Golden Eagle 25N-1B-M - T2		N 40 31 1.76	W 104 49 49.85	14715104.51	1687521.34	7149.50	4444.99	-1138.89	-4431.98	
Golden Eagle 25N-1B-M TOP		N 40 31 2.09	W 104 48 46.80	1432013.58	3191003.79	7205.86	-424.67	-1106.07	437.63	

Critical Points									
Critical Point	MD	INCL	AZIM	TVD	VSEC	N(+)/S(-)	E(+)/W(-)	DLS	
Surface	0.00	0.00	0.00	0.00	0.00	0.00	0.00		
KB Adjustment	25.00	0.00	90.44	25.00	0.00	0.00	0.00	0.00	
Begin IFR Survey	109.00	0.40	90.44	109.00	-0.29	0.00	0.29	0.48	
Last IFR Survey	1774.00	13.32	132.41	1743.61	-204.68	-190.50	206.92	1.39	
9 5/8\" Casing	1825.00	13.39	132.20	1793.23	-213.30	-198.43	215.64	0.16	
Begin SLB_MWD Survey	1895.00	13.48	131.92	1861.31	-225.25	-209.32	227.71	0.16	
Last SLB_MWD Survey	15405.00	90.22	268.77	7114.29	7146.50	-1156.49	-7133.46	0.09	
Projection to Bit	15428.00	90.22	268.77	7114.21	7169.50	-1156.99	-7156.46	0.00	

Vertical Section (ft) Azim = 269.33° Scale = 1:2000.00(ft) Origin = 0N/-S, 0E/-W