



SRC Energy

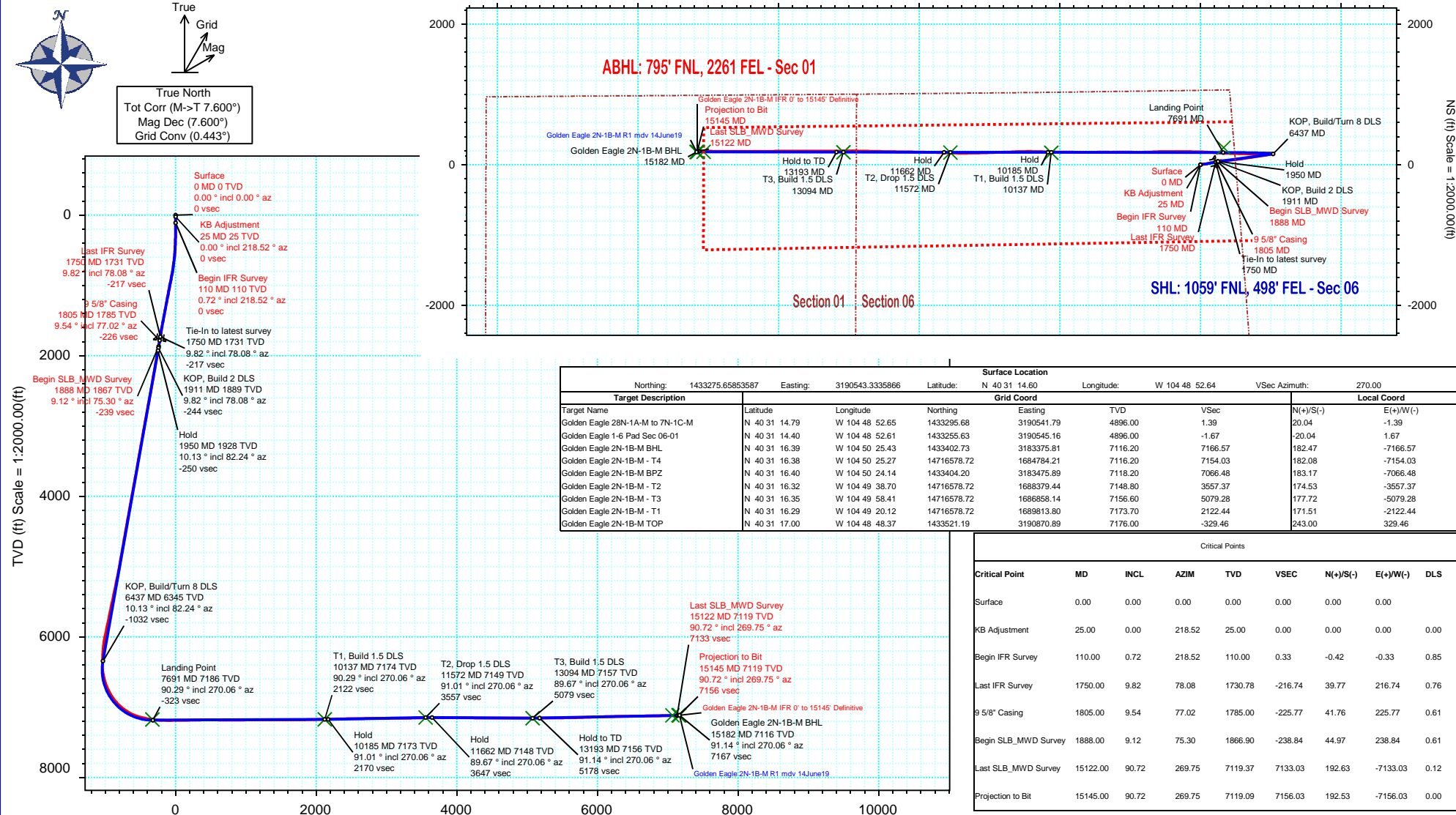
Schlumberger

Rev 1

Borehole:	Well:	Field:	Structure:
Original Hole	Golden Eagle 2N-1B-M	CO, Weld County (NAD 83 NZ) - SRC	SRC Energy 06-06N-66W (Golden Eagle 1-6 Pad)

Gravity & Magnetic Parameters				Surface Location				Miscellaneous			
Model:	Surcon IFR	Dip:	66.9°	Date:	14-Jun-2019	Lat:	N 40 31 14.60	Northing:	1433275.66ftUS	Grid Conv:	0.4428°
MagDec:	7.6°	FS:	52444nT	Gravity FS:	999.046mgn (9.80665 Based)	Lon:	W 104 48 52.64	Easting:	3190543.33ftUS	Scale Fact:	0.99996792
								Slot:	Golden Eagle 2N-1B-M	TVD Ref:	KB 25ft(4896ft above MSL)
								Plan:	Golden Eagle 2N-1B-M IFR 0' to 15145' Definitive		

Final Pva



Golden Eagle 2N-1B-M IFR 0' to 15145' Definitive Survey Geodetic Report

(Def Survey)

Report Date: July 18, 2019 - 10:48 AM
Client: SRC Energy
Field: CO, Weld County (NAD 83 NZ) - SRC
Structure / Slot: SRC Energy 06-06N-66W (Golden Eagle 1-6 Pad) / Golden Eagle 2N-1B-M
Well: Golden Eagle 2N-1B-M
Borehole: Original Hole
UWI / API#: Unknown / 05-123-50129
Survey Name: Golden Eagle 2N-1B-M IFR 0' to 15145' Definitive
Survey Date: May 22, 2019
Tort / AHD / DDI / ERD Ratio: 213.604 ° / 9254.776 ft / 6.620 / 1.287
Coordinate Reference System: NAD83 Colorado State Plane, Northern Zone, US Feet
Location Lat / Long: N 40° 31' 14.59560", W 104° 48' 52.63560"
Location Grid N/E Y/X: N 1433275.659 ftUS, E 3190543.334 ftUS
CRS Grid Convergence Angle: 0.4428 °
Grid Scale Factor: 0.99996792
Version / Patch: 2.10.760.0

Survey / DLS Computation: Minimum Curvature / Lubinski
Vertical Section Azimuth: 270.000 ° (True North)
Vertical Section Origin: 0.000 ft, 0.000 ft
TVD Reference Datum: KB 25ft
TVD Reference Elevation: 4896.000 ft above MSL
Seabed / Ground Elevation: 4871.000 ft above MSL
Magnetic Declination: 7.600 °
Total Gravity Field Strength: 999.0460mgn (9.80665 Based)
Gravity Model: GARM
Total Magnetic Field Strength: 52444.000 nT
Magnetic Dip Angle: 66.900 °
Declination Date: June 14, 2019
Magnetic Declination Model: Surcon IFR
North Reference: True North
Grid Convergence Used: 0.0000 °
Total Corr Mag North→True North: 7.6000 °
Local Coord Referenced To: Well Head

Comments	MD (ft)	Incl (°)	Azim True (°)	TVD (ft)	VSEC (ft)	NS (ft)	EW (ft)	DLS (°/100ft)	Northing (ftUS)	Easting (ftUS)	Latitude (°)	Longitude (°)
Surface	0.00	0.00	0.00	0.00	0.00	0.00	0.00	N/A	1433275.66	3190543.33	40.520721	-104.814621
KB Adjustment	25.00	0.00	218.52	25.00	0.00	0.00	0.00	0.00	1433275.66	3190543.33	40.520721	-104.814621
Begin IFR Survey	110.00	0.72	218.52	110.00	0.33	-0.42	-0.33	0.85	1433275.24	3190543.00	40.520720	-104.814622
	199.00	0.30	34.76	199.00	0.55	-0.66	-0.55	1.15	1433274.99	3190542.79	40.520719	-104.814623
	289.00	0.89	112.26	288.99	-0.23	-0.74	0.23	0.97	1433274.93	3190543.57	40.520719	-104.814620
	379.00	1.31	83.99	378.98	-1.90	-0.89	1.90	0.75	1433274.78	3190545.24	40.520719	-104.814614
	469.00	3.37	80.30	468.90	-5.53	-0.34	5.53	2.29	1433275.36	3190548.87	40.520720	-104.814601
	559.00	4.96	73.76	558.66	-11.88	1.20	11.88	1.84	1433276.95	3190555.20	40.520724	-104.814578
	649.00	6.97	75.56	648.16	-20.90	3.65	20.90	2.24	1433279.47	3190564.21	40.520731	-104.814546
	739.00	8.29	75.59	737.36	-32.48	6.62	32.48	1.47	1433282.53	3190575.76	40.520739	-104.814504
	829.00	10.43	82.62	826.16	-46.84	9.28	46.84	2.69	1433285.30	3190590.10	40.520746	-104.814453
	919.00	11.46	82.84	914.53	-63.79	11.44	63.79	1.15	1433287.59	3190607.03	40.520752	-104.814392
	1009.00	11.02	85.81	1002.80	-81.24	13.19	81.24	0.81	1433289.47	3190624.47	40.520757	-104.814329
	1099.00	10.73	78.89	1091.19	-98.04	15.43	98.04	1.49	1433291.85	3190641.25	40.520763	-104.814268
	1189.00	11.46	78.29	1179.51	-115.02	18.86	115.02	0.82	1433295.41	3190658.20	40.520773	-104.814207
	1279.00	11.06	77.37	1267.77	-132.20	22.56	132.20	0.49	1433299.24	3190675.35	40.520783	-104.814146
	1369.00	10.99	75.34	1356.11	-148.92	26.62	148.92	0.44	1433303.43	3190692.04	40.520794	-104.814085
	1459.00	10.90	79.94	1444.48	-165.60	30.28	165.60	0.98	1433307.21	3190708.69	40.520804	-104.814025
	1549.00	10.41	81.85	1532.92	-182.03	32.92	182.03	0.67	1433309.98	3190725.09	40.520811	-104.813966
	1639.00	10.15	77.81	1621.48	-197.83	35.74	197.83	0.85	1433312.93	3190740.87	40.520819	-104.813909
	1729.00	9.98	78.14	1710.10	-213.21	39.02	213.21	0.20	1433316.33	3190756.23	40.520828	-104.813854
Last IFR Survey	1750.00	9.82	78.08	1730.78	-216.74	39.77	216.74	0.76	1433317.10	3190759.76	40.520830	-104.813841
9 5/8" Casing	1805.00	9.54	77.02	1785.00	-225.77	41.76	225.77	0.61	1433319.16	3190768.77	40.520836	-104.813809
Begin												
SLB_MWD	1888.00	9.12	75.30	1866.90	-238.84	44.97	238.84	0.61	1433322.47	3190781.81	40.520844	-104.813762
Survey												
	1978.00	10.74	72.14	1955.55	-253.72	49.35	253.72	1.90	1433326.97	3190796.65	40.520856	-104.813708
	2067.00	10.98	69.68	2042.96	-269.56	54.84	269.56	0.59	1433332.58	3190812.45	40.520872	-104.813651
	2157.00	10.24	81.70	2131.43	-285.52	58.97	285.52	2.59	1433336.83	3190828.37	40.520883	-104.813594
	2246.00	9.71	93.98	2219.09	-300.83	59.59	300.83	2.46	1433337.57	3190843.69	40.520885	-104.813539
	2336.00	10.43	92.55	2307.71	-316.54	58.70	316.54	0.85	1433336.80	3190859.40	40.520882	-104.813482
	2426.00	10.13	88.10	2396.26	-332.59	58.60	332.59	0.94	1433336.83	3190875.45	40.520882	-104.813425
	2515.00	10.44	84.13	2483.83	-348.44	59.69	348.44	0.87	1433338.04	3190891.29	40.520885	-104.813368
	2605.00	10.16	87.12	2572.39	-364.48	60.92	364.48	0.67	1433339.39	3190907.31	40.520888	-104.813310
	2694.00	10.47	86.60	2659.95	-380.39	61.79	380.39	0.36	1433340.39	3190923.22	40.520891	-104.813253
	2784.00	10.26	83.72	2748.48	-396.52	63.16	396.52	0.62	1433341.88	3190939.34	40.520894	-104.813195
	2874.00	10.01	84.22	2837.07	-412.27	64.82	412.27	0.29	1433343.66	3190955.07	40.520899	-104.813138
	2963.00	10.33	84.33	2924.68	-427.90	66.39	427.90	0.36	1433345.35	3190970.70	40.520903	-104.813082
	3053.00	10.31	85.36	3013.22	-443.96	67.84	443.96	0.21	1433346.92	3190986.74	40.520907	-104.813024
	3143.00	10.49	83.12	3101.74	-460.12	69.47	460.12	0.49	1433348.68	3191002.89	40.520912	-104.812966
	3232.00	9.97	83.43	3189.33	-475.82	71.32	475.82	0.59	1433350.65	3191018.57	40.520917	-104.812910
	3322.00	10.30	84.68	3277.92	-491.57	72.96	491.57	0.44	1433352.41	3191034.31	40.520921	-104.812853
	3412.00	10.36	83.80	3366.46	-507.63	74.58	507.63	0.19	1433354.16	3191050.35	40.520926	-104.812795
	3502.00	10.25	83.61	3455.01	-523.63	76.34	523.63	0.13	1433356.05	3191066.34	40.520931	-104.812738
	3591.00	9.86	80.71	3542.64	-539.02	78.46	539.02	0.72	1433358.28	3191081.71	40.520936	-104.812682
	3681.00	9.87	80.61	3631.31	-554.23	80.96	554.23	0.02	1433360.90	3191096.91	40.520943	-104.812628
	3770.00	10.27	81.74	3718.94	-569.61	83.34	569.61	0.50	1433363.40	3191112.27	40.520950	-104.812572
	3860.00	10.77	80.58	3807.43	-585.85	85.87	585.85	0.60	1433366.05	3191128.48	40.520957	-104.812514
	3950.00	10.62	82.53	3895.87	-602.37	88.33	602.37	0.44	1433368.63	3191144.98	40.520963	-104.812454
	4040.00	10.32	81.48	3984.37	-618.56	90.60	618.56	0.40	1433371.03	3191161.16	40.520970	-104.812396
	4129.00	10.36	82.28	4071.92	-634.38	92.85	634.38	0.17	1433373.41	3191176.95	40.520976	-104.812339
	4219.00	10.20	81.26	4160.48	-650.27	95.15	650.27	0.27	1433375.83	3191192.83	40.520982	-104.812282
	4308.00	9.95	79.94	4248.11	-665.63	97.69	665.63	0.38	1433378.49	3191208.17	40.520989	-104.812227
	4398.00	10.19	83.59	4336.72	-681.20	99.94	681.20	0.76	1433380.86	3191223.72	40.520995	-104.812171
	4488.00	10.21	81.98	4425.30	-697.01	101.94	697.01	0.32	1433382.98	3191239.51	40.521001	-104.812114
	4577.00	10.15	82.47	4512.90	-712.59	104.07	712.59	0.12	1433385.23	3191255.08	40.521007	-104.812058
	4667.00	10.04	81.25	4601.50	-728.21	106.30	728.21	0.27	1433387.58	3191270.67	40.521013	-104.812002
	4757.00	10.10	81.40	4690.12	-743.77	108.68	743.77	0.07	1433390.08	3191286.21	40.521019	-104.811946
	4846.00	10.05	81.01	4777.75	-759.15	111.06	759.15	0.10	1433392.58	3191301.58	40.521026	-104.811890
	4936.00	10.27	81.70	4866.33	-774.85	113.44	774.85	0.28	1433395.08	3191317.25	40.521032	-104.811834
	5026.00	10.05	78.77	4954.92	-790.49	116.13	790.49	0.62	1433397.89	3191332.87	40.521040	-104.811778
	5115.00	10.72	81.12	5042.47	-806.28	118.92	806.28	0.89	1433400.80	3191348.65	40.521047	-104.811721
	5205.00	11.42	80.73	5130.79	-823.35	121.65	823.35	0.78	1433403.66	3191365.69	40.521055	-104.811660
	5295.00	11.89	81.20	5218.93	-841.30	124.50	841.30	0.53	1433406.65	3191383.62	40.521063	-104.811595
	5385.00	11.98	80.88	5306.99	-859.69	127.40	859.69	0.12	1433409.69	3191401.98	40.521071	-104.811529
	5474.00	12.05	80.54	5394.04	-877.97	130.39	877.97	0.11	1433412.83	3191420.24	40.521079	-104.811463
	5563.00	12.04	79.60	5481.08	-896.27	133.59	896.27	0.22	1433416.17	3191438.51	40.521088	-104.811397
	5653.00	12.01	80.02	5569.10	-914.72	136.91	914.72	0.10	1433419.63	3191456.94	40.521097	-104.811331
	5742.00	11.80	80.24	5656.19	-932.81	140.06	932.81	0.24	1433422.92	3191475.00	40.521105	-104.811266
	5832.00	11.94	80.26	5744.27	-951.05	143.19	951.05	0.16	1433426.19	3191493.22	40.521114	-104.811200
	5921.00	11.93	80.91	5831.34	-969.21	146.20	969.21	0.15	1433429.34	3191511.35	40.521122	-104.811135
	6011.00	11.94	80.89	5919.40	-987.59	149.15	987.59	0.01	1433432.43	3191529.71	40.521130	-104.811069
	6100.00	11.94	79.73	6006.47	-1005.74	152.25	1005.74	0.27	1433435.67	3191547.83	40.521139	-104.811004
	6190.00	7.91	77.79	6095.11	-1020.96	155.22	1020.96	4.49	1433438.76	3191563.03	40.521147	-104.810949
	6279.00	4.46	76.80	6183.57	-1030.32	157.30	1030.32	3.88	1433440.91	3191572.37	40.521153	-104.810915
	6369.00	2.87	72.38	6273.39	-1035.87	158.78	1035.87	1.79	1433442.44	3191577.91	40.521157	-104.810895
	6458.00.											

Comments	MD (ft)	Incl (°)	Azim True (°)	TVD (ft)	VSEC (ft)	NS (ft)	EW (ft)	DLS (°/100ft)	Northing (ftUS)	Easting (ftUS)	Latitude (°)	Longitude (°)
	6548.00	3.63	290.80	6452.26	-1037.94	161.59	1037.94	5.67	1433445.26	3191579.96	40.521164	-104.810888
	6638.00	12.34	276.45	6541.31	-1025.70	163.69	1025.70	9.85	1433447.26	3191567.70	40.521170	-104.810932
	6727.00	15.14	271.84	6627.75	-1004.63	165.13	1004.63	3.38	1433448.54	3191546.62	40.521174	-104.811008
	6817.00	22.14	267.75	6712.98	-975.90	164.84	975.90	7.91	1433448.03	3191517.89	40.521173	-104.811111
	6906.00	29.14	264.37	6793.17	-937.52	162.05	937.52	8.03	1433444.95	3191479.55	40.521166	-104.811249
	6996.00	34.87	266.44	6869.46	-890.00	158.30	890.00	6.48	1433440.83	3191432.05	40.521155	-104.811420
	7085.00	41.73	268.59	6939.27	-834.93	155.99	834.93	7.85	1433438.09	3191377.00	40.521149	-104.811618
	7174.00	50.32	269.89	7001.01	-770.95	155.19	770.95	9.71	1433436.80	3191313.03	40.521147	-104.811848
	7264.00	56.94	270.35	7054.35	-698.52	155.36	698.52	7.37	1433436.41	3191240.61	40.521147	-104.812109
	7354.00	63.89	271.68	7098.76	-620.32	156.77	620.32	7.83	1433437.22	3191162.40	40.521151	-104.812390
	7443.00	72.48	271.40	7131.80	-537.80	158.99	537.80	9.66	1433438.79	3191079.87	40.521157	-104.812687
	7533.00	78.56	271.60	7154.30	-450.73	161.27	450.73	6.76	1433440.40	3190992.79	40.521164	-104.813000
	7622.00	79.82	272.18	7170.99	-363.36	164.15	363.36	1.55	1433442.61	3190905.40	40.521172	-104.813314
	7712.00	84.16	273.30	7183.53	-274.36	168.42	274.36	4.98	1433446.19	3190816.37	40.521183	-104.813634
	7801.00	89.00	273.81	7188.83	-185.71	173.93	185.71	5.47	1433451.01	3190727.69	40.521198	-104.813953
	7890.00	89.94	273.44	7189.66	-96.90	179.55	96.90	1.14	1433455.95	3190638.84	40.521214	-104.814272
	7980.00	90.87	271.66	7189.02	-6.99	183.56	6.99	2.23	1433459.26	3190548.91	40.521225	-104.814596
	8069.00	90.83	270.55	7187.70	81.98	185.27	-81.98	1.25	1433460.29	3190459.93	40.521230	-104.814916
	8159.00	90.86	270.14	7186.37	171.97	185.81	-171.97	0.46	1433460.13	3190369.94	40.521231	-104.815240
	8249.00	90.73	270.13	7185.12	261.96	186.03	-261.96	0.14	1433459.65	3190279.95	40.521232	-104.815563
	8338.00	91.84	271.34	7183.13	350.92	187.17	-350.92	1.84	1433460.10	3190190.98	40.521235	-104.815883
	8427.00	89.79	270.48	7181.86	439.90	188.58	-439.90	2.50	1433460.83	3190102.01	40.521239	-104.816203
	8517.00	89.60	268.30	7182.34	529.89	187.62	-529.89	2.43	1433459.17	3190012.03	40.521236	-104.816527
	8606.00	89.61	267.94	7182.96	618.84	184.70	-618.84	0.40	1433455.57	3189923.11	40.521228	-104.816847
	8695.00	89.57	267.96	7183.59	707.78	181.52	-707.78	0.05	1433451.70	3189834.20	40.521219	-104.817167
	8785.00	90.23	268.95	7183.75	797.74	179.09	-797.74	1.32	1433448.57	3189744.26	40.521213	-104.817490
	8874.00	90.26	270.15	7183.37	886.74	178.39	-886.74	1.35	1433447.19	3189655.27	40.521211	-104.817810
	8964.00	90.39	270.82	7182.86	976.73	179.16	-976.73	0.76	1433447.25	3189565.28	40.521213	-104.818134
	9054.00	90.13	269.77	7182.45	1066.73	179.62	-1066.73	1.20	1433447.02	3189475.28	40.521214	-104.818458
	9143.00	90.68	269.80	7181.82	1155.73	179.28	-1155.73	0.62	1433446.00	3189386.30	40.521213	-104.818778
	9232.00	90.03	269.87	7181.27	1244.72	179.03	-1244.72	0.73	1433445.06	3189297.31	40.521212	-104.819098
	9322.00	90.21	270.34	7181.08	1334.72	179.19	-1334.72	0.56	1433444.52	3189207.31	40.521213	-104.819422
	9411.00	90.06	269.81	7180.87	1423.72	179.31	-1423.72	0.62	1433443.95	3189118.32	40.521213	-104.819742
	9501.00	89.67	268.98	7181.08	1513.72	178.36	-1513.72	1.02	1433442.31	3189028.34	40.521210	-104.820066
	9590.00	90.06	270.48	7181.29	1602.71	177.94	-1602.71	1.74	1433441.20	3188939.35	40.521209	-104.820386
	9680.00	89.94	269.65	7181.29	1692.71	178.04	-1692.71	0.93	1433440.61	3188849.35	40.521210	-104.820709
	9769.00	90.86	271.05	7180.67	1781.70	178.59	-1781.70	1.88	1433440.46	3188760.36	40.521211	-104.821030
	9859.00	91.05	270.16	7179.17	1871.69	179.54	-1871.69	1.01	1433440.72	3188670.38	40.521214	-104.821353
	9948.00	91.36	271.09	7177.30	1960.66	180.51	-1960.66	1.10	1433441.00	3188581.40	40.521216	-104.821673
	10038.00	91.35	270.64	7175.17	2050.62	181.87	-2050.62	0.50	1433441.66	3188491.43	40.521220	-104.821997
	10127.00	91.37	270.95	7173.06	2139.59	183.10	-2139.59	0.35	1433442.21	3188402.46	40.521223	-104.822317
	10217.00	91.37	271.52	7170.91	2229.54	185.04	-2229.54	0.63	1433443.45	3188312.50	40.521229	-104.822640
	10306.00	91.75	271.79	7168.48	2318.47	187.61	-2318.47	0.52	1433445.34	3188223.56	40.521236	-104.822960
	10396.00	91.10	270.17	7166.25	2408.43	189.15	-2408.43	1.94	1433446.18	3188133.60	40.521240	-104.823284
	10485.00	90.77	269.60	7164.79	2497.42	188.97	-2497.42	0.74	1433445.31	3188044.62	40.521239	-104.823604
	10574.00	90.38	267.94	7163.90	2586.39	187.06	-2586.39	1.92	1433442.71	3187955.67	40.521234	-104.823924
	10664.00	90.63	267.44	7163.11	2676.31	183.43	-2676.31	0.62	1433438.39	3187865.78	40.521224	-104.824247
	10754.00	90.81	268.67	7161.98	2766.25	180.38	-2766.25	1.38	1433434.64	3187775.87	40.521216	-104.824571
	10843.00	90.50	268.41	7160.96	2855.22	178.11	-2855.22	0.45	1433431.69	3187686.92	40.521209	-104.824891
	10932.00	90.16	267.54	7160.45	2944.16	174.96	-2944.16	1.05	1433427.86	3187598.01	40.521201	-104.825211
	11022.00	91.03	268.50	7159.51	3034.10	171.85	-3034.10	1.44	1433424.05	3187508.10	40.521192	-104.825534
	11111.00	90.67	268.25	7158.19	3123.05	169.33	-3123.05	0.49	1433420.84	3187419.17	40.521185	-104.825854
	11201.00	90.81	269.44	7157.03	3213.02	167.52	-3213.02	1.33	1433418.33	3187329.22	40.521180	-104.826178
	11290.00	89.99	268.25	7156.41	3302.00	165.72	-3302.00	1.62	1433415.85	3187240.26	40.521175	-104.826498
	11380.00	91.04	270.02	7155.60	3391.98	164.36	-3391.98	2.29	1433413.80	3187150.30	40.521172	-104.826821
	11469.00	90.96	273.00	7154.05	3480.93	166.71	-3480.93	3.35	1433415.45	3187061.34	40.521178	-104.827141
	11558.00	90.75	271.48	7152.72	3569.85	170.19	-3569.85	1.72	1433418.24	3186972.40	40.521187	-104.827461
	11648.00	90.95	271.61	7151.38	3659.80	172.61	-3659.80	0.27	1433419.98	3186882.43	40.521194	-104.827785
	11738.00	90.71	271.39	7150.08	3749.76	174.97	-3749.76	0.36	1433421.64	3186792.46	40.521200	-104.828108
	11828.00	89.57	271.94	7149.86	3839.72	177.58	-3839.72	1.41	1433423.55	3186702.48	40.521208	-104.828432
	11917.00	89.50	270.04	7150.58	3928.70	179.12	-3928.70	2.14	1433424.40	3186613.50	40.521212	-104.828752
	12007.00	89.78	271.51	7151.15	4018.69	180.34	-4018.69	1.66	1433424.93	3186523.51	40.521215	-104.829076
	12097.00	89.78	271.57	7151.49	4108.66	182.76	-4108.66	0.07	1433426.65	3186433.53	40.521222	-104.829399
	12187.00	89.15	269.90	7152.33	4198.64	183.91	-4198.64	1.98	1433427.11	3186343.54	40.521225	-104.829723
	12276.00	89.71	270.94	7153.22	4287.63	184.56	-4287.63	1.33	1433427.07	3186254.55	40.521227	-104.830043
	12366.00	90.17	271.34	7153.31	4377.62	186.36	-4377.62	0.68	1433428.17	3186164.56	40.521231	-104.830367
	12456.00	89.84	270.99	7153.30	4467.60	188.18	-4467.60	0.53	1433429.30	3186074.57	40.521236	-104.830690
	12545.00	89.87	270.85	7153.53	4556.59	189.61	-4556.59	0.16	1433430.04	3185985.57	40.521240	-104.831010
	12635.00	89.87	271.09	7153.73	4646.57	191.14	-4646.57	0.27	1433430.87	3185895.58	40.521244	-104.831334
	12724.00	89.92	271.06	7153.90	4735.56	192.81	-4735.56	0.07	1433431.85	3185806.59	40.521249	-104.831654
	12813.00	89.67	271.06	7154.21	4824.54	194.45	-4824.54	0.28	1433432.81	3185717.60	40.521253	-104.831974
	12902.00	89.73	270.88	7154.68	4913.53	195.96	-4913.53	0.21	1433433.63	3185628.61	40.521258	-104.832294
	12992.00	89.69	269.73	7155.14	5003.52	196.44	-5003.52	1.28	1433433.41	3185538.61	40.521259	-104.832618
	13081.00	89.88	269.48	7155.47	5092.52	195.83	-5092.52	0.35	1433432.11	3185449.63	40.521257	-104.832938
	13171.00	89.73	269.11	7155.78	5182.51	194.72	-5182.51	0.44	1433430.31	3185359.65	40.521254	-104.833262
	13261.00	89.95	270.33	7156.03	5272.51	194.28	-5272.51	1.38	1433429.17	3185269.66	40.521253	-104.833585
	13350.00	91.06	270.68	7155.24	5361.50	195.06	-5361.50	1.31	1433429.27	3185180.67	40.521255	-104.833905
	13440.00	90.89	269.72	7153.71	5451.49	195.38	-5451.49	1.08	1433428.89	3185090.69	40.521256	-104.8

Comments	MD (ft)	Incl (°)	Azim True (°)	TVD (ft)	VSEC (ft)	NS (ft)	EW (ft)	DLS (°/100ft)	Northing (ftUS)	Easting (ftUS)	Latitude (°)	Longitude (°)
Description	Part	MD From (ft)	MD To (ft)	EOU Freq (ft)	Hole Size	Casing Diameter (in)	Survey Tool Type	Borehole / Survey				
	1	0.000	25.000	1/98.425	13.500	9.625	NAL_MWD_IFR1-Depth Only	Original Hole / Golden Eagle 2N-1B-M IFR 0' to 15145' Definitive				
	1	25.000	25.000	Act Stns	13.500	9.625	NAL_MWD_IFR1-Depth Only	Original Hole / Golden Eagle 2N-1B-M IFR 0' to 15145' Definitive				
	1	25.000	1805.000	Act Stns	13.500	9.625	NAL_MWD_IFR1	Original Hole / Golden Eagle 2N-1B-M IFR 0' to 15145' Definitive				
	1	1805.000	15145.000	Act Stns	8.500	5.500	NAL_MWD_IFR1+MS	Original Hole / Golden Eagle 2N-1B-M IFR 0' to 15145' Definitive				