



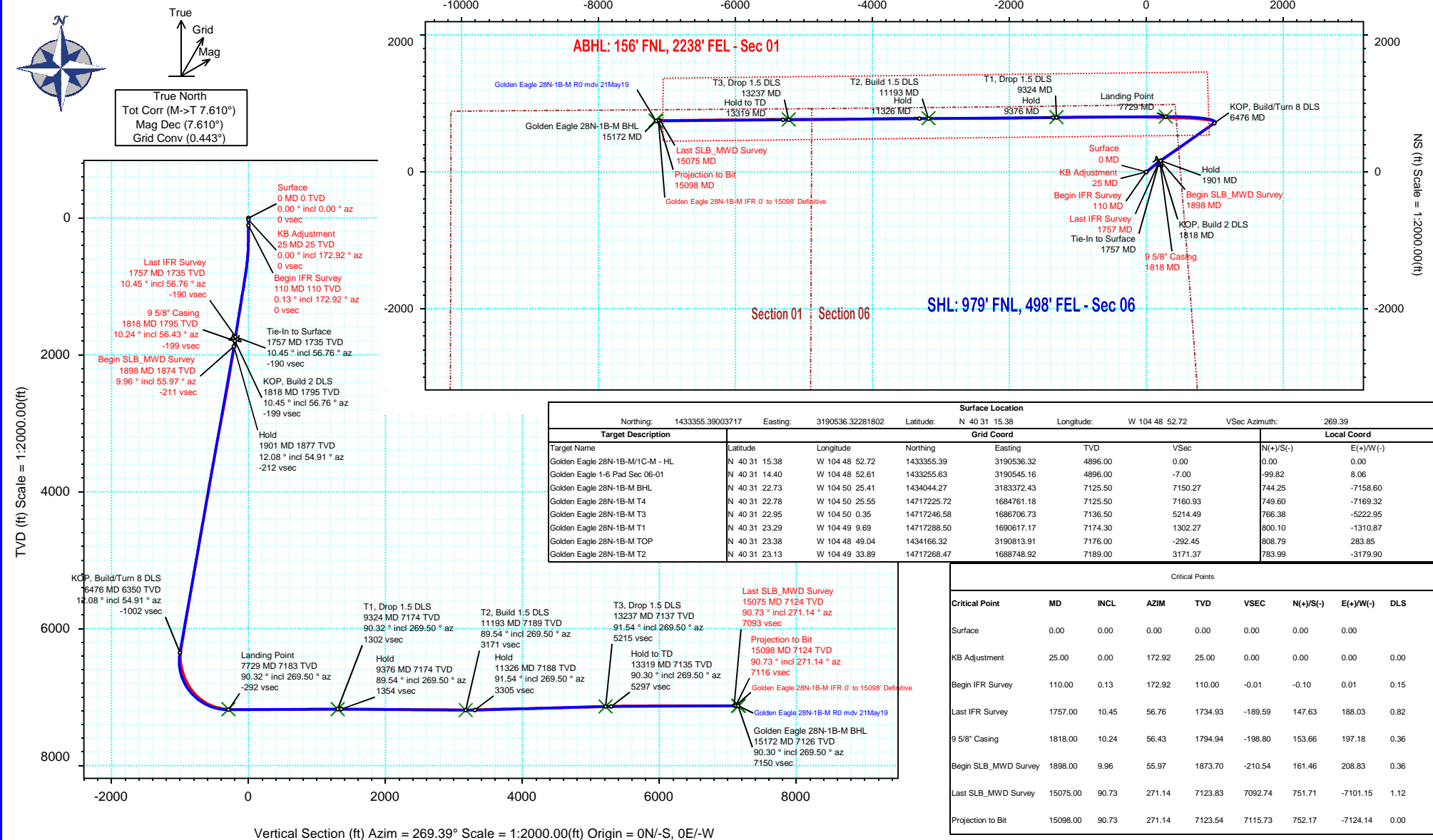
SRC Energy

Schlumberger

Borehole:	Well:	Field:	Structure:
Original Hole	Golden Eagle 28N-1B-M	CO, Weld County (NAD 83 NZ) - SRC	SRC Energy 06-06N-66W (Golden Eagle 1-6 Pad)

Gravity & Magnetic Parameters				Surface Location				Miscellaneous			
Model:	Surcon IFR	Dip:	66.89°	Date:	25-May-2019	Lat:	N 40 31 15.38	Northing:	1433355.39ftUS	Grid Conv:	0.4428°
MagDec:	7.61°	FS:	52450nT	Gravity FS:	999.046mgn (9.80665 Based)	Lon:	W 104 48 52.72	Easting:	3190536.32ftUS	Scale Fact:	0.99996794
								Slot:	Golden Eagle 28N-1B-M	TVD Ref:	KB 25ft(4896ft above MSL)
								Plan:	Golden Eagle 28N-1B-M IFR 0' to 15098' Definitive		

Final Pva



Golden Eagle 28N-1B-M IFR 0' to 15098' Definitive Survey Geodetic Report

(Def Survey)

Report Date: June 17, 2019 - 08:55 AM
Client: SRC Energy
Field: CO, Weld County (NAD 83 NZ) - SRC
Structure / Slot: SRC Energy 06-06N-66W (Golden Eagle 1-6 Pad) / Golden Eagle 28N-1B-M
Well: Golden Eagle 28N-1B-M
Borehole: Original Hole
UWI / API#: Unknown / 05-123-50123
Survey Name: Golden Eagle 28N-1B-M IFR 0' to 15098' Definitive
Survey Date: May 22, 2019
Tort / AHD / DDI / ERD Ratio: 231.063 ° / 9360.456 ft / 6.657 / 1.303
Coordinate Reference System: NAD83 Colorado State Plane, Northern Zone, US Feet
Location Lat / Long: N 40° 31' 15.38400", W 104° 48' 52.71840"
Location Grid N/E Y/X: N 1433355.390 ftUS, E 3190536.323 ftUS
CRS Grid Convergence Angle: 0.4428 °
Grid Scale Factor: 0.99996794
Version / Patch: 2.10.760.0

Survey / DLS Computation: Minimum Curvature / Lubinski
Vertical Section Azimuth: 269.390 ° (True North)
Vertical Section Origin: 0.000 ft, 0.000 ft
TVD Reference Datum: KB 25ft
TVD Reference Elevation: 4896.000 ft above MSL
Seabed / Ground Elevation: 4871.000 ft above MSL
Magnetic Declination: 7.610 °
Total Gravity Field Strength: 999.0461mgn (9.80665 Based)
Gravity Model: GARM
Total Magnetic Field Strength: 52450.000 nT
Magnetic Dip Angle: 66.890 °
Declination Date: May 25, 2019
Magnetic Declination Model: Surcon IFR
North Reference: True North
Grid Convergence Used: 0.0000 °
Total Corr Mag North→True North: 7.6100 °
Local Coord Referenced To: Well Head

Comments	MD (ft)	Incl (°)	Azim True (°)	TVD (ft)	VSEC (ft)	NS (ft)	EW (ft)	DLS (°/100ft)	Northing (ftUS)	Easting (ftUS)	Latitude (°)	Longitude (°)
Surface	0.00	0.00	0.00	0.00	0.00	0.00	0.00	N/A	1433355.39	3190536.32	40.520940	-104.814644
KB Adjustment	25.00	0.00	172.92	25.00	0.00	0.00	0.00	0.00	1433355.39	3190536.32	40.520940	-104.814644
Begin IFR Survey	110.00	0.13	172.92	110.00	-0.01	-0.10	0.01	0.15	1433355.29	3190536.34	40.520940	-104.814644
	199.00	0.36	107.30	199.00	-0.29	-0.28	0.29	0.37	1433355.11	3190536.62	40.520939	-104.814643
	289.00	0.72	59.68	289.00	-1.05	-0.08	1.05	0.61	1433355.32	3190537.37	40.520940	-104.814640
	379.00	1.62	50.31	378.98	-2.53	1.02	2.52	1.02	1433356.43	3190538.83	40.520943	-104.814635
	469.00	3.74	43.02	468.87	-5.54	3.98	5.50	2.38	1433359.41	3190541.79	40.520951	-104.814624
	559.00	6.04	52.13	558.54	-11.34	9.03	11.24	2.69	1433364.51	3190547.49	40.520965	-104.814604
	649.00	7.91	53.08	647.87	-20.09	15.66	19.93	2.08	1433371.20	3190556.13	40.520983	-104.814572
	739.00	9.72	51.92	736.80	-31.12	24.07	30.86	2.02	1433379.69	3190567.00	40.521006	-104.814533
	829.00	11.33	52.55	825.29	-44.22	34.13	43.86	1.79	1433389.86	3190579.92	40.521034	-104.814486
	919.00	10.99	52.19	913.58	-58.13	44.76	57.66	0.39	1433400.60	3190593.63	40.521063	-104.814437
	1009.00	11.53	49.73	1001.85	-71.89	55.84	71.30	0.80	1433411.77	3190607.18	40.521093	-104.814388
	1099.00	11.52	50.55	1090.04	-85.81	67.36	85.10	0.18	1433423.40	3190620.90	40.521125	-104.814338
	1189.00	11.36	50.94	1178.25	-99.75	78.66	98.92	0.20	1433434.81	3190634.63	40.521156	-104.814288
	1279.00	12.04	50.69	1266.38	-114.02	90.19	113.07	0.76	1433446.45	3190648.69	40.521188	-104.814237
	1369.00	11.77	51.21	1354.44	-128.56	101.89	127.49	0.32	1433458.26	3190663.01	40.521220	-104.814185
	1459.00	11.23	50.43	1442.64	-142.59	113.22	141.40	0.62	1433469.70	3190676.84	40.521251	-104.814135
	1549.00	11.19	50.98	1530.92	-156.25	124.30	154.94	0.13	1433480.88	3190690.29	40.521281	-104.814087
	1639.00	11.74	55.25	1619.12	-170.67	135.02	169.24	1.12	1433491.71	3190704.51	40.521311	-104.814035
	1729.00	10.68	56.71	1707.41	-185.27	144.81	183.74	1.22	1433501.62	3190718.93	40.521337	-104.813983
Last IFR Survey 9 5/8" Casing Begin	1757.00	10.45	56.76	1734.93	-189.59	147.63	188.03	0.82	1433504.46	3190723.20	40.521345	-104.813968
SLB_MWD Survey	1818.00	10.24	56.43	1794.94	-198.80	153.66	197.18	0.36	1433510.56	3190732.30	40.521362	-104.813935
	1898.00	9.96	55.97	1873.70	-210.54	161.46	208.83	0.36	1433518.46	3190743.89	40.521383	-104.813893
	1988.00	10.80	60.26	1962.23	-224.40	170.00	222.60	1.27	1433527.10	3190757.60	40.521407	-104.813843
	2077.00	11.95	46.43	2049.50	-238.43	180.49	236.52	3.32	1433537.70	3190771.44	40.521435	-104.813793
	2167.00	11.85	49.42	2137.56	-252.33	192.93	250.29	0.69	1433550.24	3190785.11	40.521470	-104.813744
	2256.00	11.93	50.96	2224.65	-266.54	204.66	264.38	0.37	1433562.08	3190799.10	40.521502	-104.813693
	2346.00	11.86	56.65	2312.72	-281.61	215.61	279.33	1.30	1433573.14	3190813.97	40.521532	-104.813639
	2435.00	10.75	55.21	2399.99	-296.17	225.37	293.79	1.29	1433583.02	3190828.35	40.521559	-104.813587
	2525.00	12.12	56.48	2488.21	-311.05	235.38	308.56	1.55	1433593.14	3190843.04	40.521586	-104.813534
	2615.00	12.15	56.12	2576.20	-326.90	245.88	324.30	0.09	1433603.76	3190858.70	40.521615	-104.813478
	2704.00	11.86	58.94	2663.25	-342.61	255.82	339.91	0.74	1433613.82	3190874.23	40.521642	-104.813421
	2794.00	13.27	56.32	2751.09	-359.24	266.32	356.43	1.69	1433624.44	3190890.67	40.521671	-104.813362
	2883.00	12.63	57.83	2837.83	-376.09	277.16	373.16	0.81	1433635.42	3190907.32	40.521701	-104.813302
	2973.00	12.30	56.01	2925.71	-392.48	287.76	389.44	0.57	1433646.14	3190923.51	40.521730	-104.813243
	3063.00	12.79	55.70	3013.56	-408.78	298.73	405.62	0.55	1433657.24	3190939.61	40.521760	-104.813185
	3152.00	13.16	58.26	3100.29	-425.65	309.61	422.37	0.77	1433668.25	3190956.28	40.521790	-104.813125
	3242.00	12.60	57.67	3188.02	-442.77	320.25	439.38	0.64	1433679.02	3190973.20	40.521819	-104.813064
	3332.00	12.80	55.37	3275.82	-459.38	331.17	455.88	0.60	1433690.06	3190989.61	40.521849	-104.813004
	3422.00	12.03	52.99	3363.72	-475.19	342.48	471.57	1.03	1433701.49	3191005.22	40.521880	-104.812948
	3511.00	12.40	53.38	3450.70	-490.39	353.76	486.65	0.43	1433712.89	3191020.21	40.521911	-104.812894
	3601.00	12.20	53.69	3538.64	-505.93	365.16	502.07	0.23	1433724.41	3191035.54	40.521942	-104.812838
	3691.00	12.78	54.99	3626.50	-521.86	376.50	517.88	0.72	1433735.87	3191051.26	40.521973	-104.812781
	3780.00	12.48	55.10	3713.35	-537.93	387.65	533.83	0.34	1433747.14	3191067.13	40.522004	-104.812724
	3870.00	12.44	55.27	3801.23	-553.99	398.74	549.78	0.06	1433758.35	3191082.98	40.522034	-104.812667
	3960.00	12.05	53.00	3889.18	-569.58	409.91	565.24	0.69	1433769.65	3191098.36	40.522065	-104.812611
	4049.00	12.40	53.90	3976.17	-584.84	421.14	580.39	0.45	1433780.98	3191113.42	40.522096	-104.812556
	4139.00	12.47	57.31	4064.06	-600.94	432.08	596.37	0.82	1433792.05	3191129.32	40.522126	-104.812499
	4229.00	11.63	51.17	4152.08	-616.30	443.01	611.62	1.70	1433803.10	3191144.48	40.522156	-104.812444
	4318.00	12.06	53.35	4239.18	-630.86	454.19	626.06	0.70	1433814.39	3191158.84	40.522187	-104.812392
	4408.00	12.09	53.00	4327.19	-646.05	465.47	641.13	0.09	1433825.79	3191173.82	40.522218	-104.812338
	4498.00	11.76	53.83	4415.25	-661.10	476.56	656.07	0.41	1433836.99	3191188.66	40.522248	-104.812284
	4587.00	12.14	54.61	4502.32	-676.17	487.33	671.02	0.46	1433847.88	3191203.53	40.522278	-104.812230
	4677.00	12.03	56.54	4590.32	-691.82	497.98	686.56	0.47	1433858.65	3191218.99	40.522307	-104.812175
	4767.00	12.29	56.08	4678.30	-707.70	508.50	702.33	0.31	1433869.28	3191234.68	40.522336	-104.812118
	4856.00	11.33	53.28	4765.42	-722.68	519.01	717.20	1.26	1433879.91	3191249.46	40.522365	-104.812064
	4946.00	11.41	56.14	4853.65	-737.27	529.26	731.68	0.63	1433890.27	3191263.86	40.522393	-104.812012
	5036.00	12.24	53.72	4941.74	-752.47	539.86	746.76	1.07	1433900.99	3191278.86	40.522422	-104.811958
	5125.00	12.22	57.55	5028.73	-768.13	550.50	762.32	0.91	1433911.75	3191294.33	40.522451	-104.811902
	5215.00	12.12	54.55	5116.70	-783.98	561.09	778.05	0.71	1433922.46	3191309.99	40.522480	-104.811845
	5305.00	11.14	56.70	5204.86	-799.05	571.35	793.01	1.19	1433932.83	3191324.87	40.522508	-104.811792
	5395.00	11.36	53.97	5293.13	-813.59	581.33	807.45	0.64	1433942.93	3191339.23	40.522536	-104.811740
	5484.00	12.28	55.10	5380.24	-828.56	591.90	822.30	1.07	1433953.61	3191354.00	40.522565	-104.811686
	5573.00	11.91	54.05	5467.26	-843.87	602.71	837.50	0.48	1433964.53	3191369.11	40.522594	-104.811632
	5663.00	12.12	55.45	5555.29	-859.28	613.52	852.80	0.40	1433975.46	3191384.32	40.522624	-104.811577
	5752.00	11.73	53.58	5642.37	-874.37	624.19	867.77	0.62	1433986.25	3191399.22	40.522653	-104.811523
	5841.00	11.90	53.88	5729.49	-889.17	634.97	882.46	0.20	1433997.14	3191413.82	40.522683	-104.811470
	5931.00	12.04	55.27	5817.53	-904.50	645.79	897.67	0.36	1434008.08	3191428.95	40.522713	-104.811415
	6021.00	11.60	52.79	5905.62	-919.53	656.61	912.60	0.75	1434019.01	3191443.79	40.522742	-104.811361
	6110.00	11.80	53.46	5992.77	-934.09	667.44	927.03	0.27	1434029.95	3191458.14	40.522772	-104.811310
	6199.00	11.70	54.40	6079.91	-948.85	678.11	941.68	0.24	1434040.73	3191472.70	40.522801	-104.811257
	6289.00	10.83	52.67	6168.17	-963.10	688.55	955.83	1.04	1434051.28	3191486.77	40.522830	-104.811206
	6378.00	10.72	53.01	6255.60	-976.47	698.60	969.09	0.14	1434061.43	3191499.95	40.522857	-104.811158
	6468.00	11.17	42.23	63463								

Comments	MD (ft)	Incl (°)	Azim True (°)	TVD (ft)	VSEC (ft)	NS (ft)	EW (ft)	DLS (°/100ft)	Northing (ftUS)	Easting (ftUS)	Latitude (°)	Longitude (°)
	6558.00	13.79	356.97	6432.04	-994.62	727.30	986.94	10.94	1434090.27	3191517.58	40.522936	-104.811094
	6647.00	16.17	316.68	6518.24	-985.75	746.96	977.85	11.75	1434109.86	3191508.34	40.522990	-104.811127
	6736.00	13.75	267.70	6604.55	-966.69	755.59	958.70	14.03	1434118.34	3191489.12	40.523014	-104.811196
	6826.00	19.75	275.93	6690.70	-940.87	756.73	932.86	7.15	1434119.28	3191463.28	40.523017	-104.811289
	6915.00	26.99	277.96	6772.34	-905.91	761.09	897.86	8.18	1434123.37	3191428.24	40.523029	-104.811414
	7005.00	33.45	274.69	6850.08	-860.97	765.95	852.86	7.40	1434127.88	3191383.21	40.523042	-104.811576
	7094.00	39.41	275.83	6921.65	-808.42	770.83	800.26	6.74	1434132.36	3191330.57	40.523056	-104.811766
	7184.00	46.81	275.59	6987.31	-747.33	776.94	739.10	8.22	1434137.99	3191269.37	40.523073	-104.811985
	7274.00	53.95	273.22	7044.67	-678.32	782.18	670.03	8.19	1434142.70	3191200.26	40.523087	-104.812234
	7363.00	61.00	271.80	7092.50	-603.44	785.43	595.11	8.03	1434145.37	3191125.32	40.523096	-104.812503
	7452.00	69.37	271.32	7129.82	-522.78	787.62	514.43	9.42	1434146.93	3191044.63	40.523102	-104.812794
	7542.00	76.15	270.76	7156.47	-436.91	789.17	428.53	7.56	1434147.82	3190958.73	40.523106	-104.813103
	7632.00	83.78	271.98	7172.15	-348.41	791.30	340.00	8.58	1434149.26	3190870.19	40.523112	-104.813421
	7721.00	87.06	271.52	7179.25	-259.78	794.00	251.34	3.72	1434151.29	3190781.51	40.523119	-104.813740
	7810.00	89.06	271.17	7182.26	-170.89	796.09	162.42	2.28	1434152.69	3190692.58	40.523125	-104.814060
	7900.00	90.11	271.20	7182.92	-80.94	797.95	72.45	1.17	1434153.85	3190602.60	40.523130	-104.814383
	7989.00	90.30	271.47	7182.60	8.01	800.03	-16.53	0.37	1434155.24	3190513.61	40.523136	-104.814703
	8079.00	90.09	270.46	7182.29	97.98	801.54	-106.52	1.15	1434156.06	3190423.62	40.523140	-104.815027
	8168.00	90.24	270.45	7182.04	186.96	802.25	-195.51	0.17	1434156.08	3190334.62	40.523142	-104.815347
	8258.00	90.76	270.20	7181.25	276.94	802.76	-285.51	0.64	1434155.89	3190244.63	40.523143	-104.815671
	8347.00	90.52	269.42	7180.26	365.94	802.46	-374.50	0.92	1434154.91	3190155.64	40.523143	-104.815991
	8437.00	90.49	269.31	7179.46	455.93	801.47	-464.49	0.13	1434153.22	3190065.67	40.523140	-104.816315
	8526.00	90.53	270.76	7178.67	544.92	801.52	-553.49	1.63	1434152.58	3189976.68	40.523140	-104.816635
	8616.00	89.92	269.88	7178.32	634.91	802.02	-643.48	1.19	1434152.39	3189886.68	40.523141	-104.816959
	8705.00	90.14	270.05	7178.27	723.90	801.97	-732.48	0.31	1434151.65	3189797.69	40.523141	-104.817279
	8795.00	90.33	269.70	7177.90	813.90	801.77	-822.48	0.44	1434150.76	3189707.70	40.523141	-104.817602
	8884.00	90.49	269.69	7177.26	902.89	801.30	-911.48	0.18	1434149.59	3189618.71	40.523139	-104.817923
	8974.00	90.31	269.60	7176.64	992.89	800.74	-1001.47	0.22	1434148.34	3189528.73	40.523138	-104.818246
	9063.00	90.00	268.71	7176.39	1081.89	799.43	-1090.46	1.06	1434146.34	3189439.75	40.523134	-104.818566
	9152.00	90.39	269.59	7176.09	1170.89	798.11	-1179.45	1.08	1434144.33	3189350.78	40.523131	-104.818886
	9242.00	90.18	268.97	7175.64	1260.89	796.98	-1269.44	0.73	1434142.51	3189260.80	40.523127	-104.819210
	9331.00	90.02	269.47	7175.49	1349.88	795.77	-1358.43	0.59	1434140.61	3189171.83	40.523124	-104.819530
	9421.00	90.62	269.34	7174.99	1439.88	794.83	-1448.43	0.68	1434138.98	3189081.85	40.523122	-104.819854
	9510.00	89.94	268.81	7174.55	1528.88	793.40	-1537.41	0.97	1434136.85	3188992.88	40.523118	-104.820174
	9600.00	89.27	268.26	7175.17	1618.87	791.09	-1627.38	0.96	1434133.86	3188902.93	40.523111	-104.820498
	9689.00	89.39	269.19	7176.21	1707.85	789.11	-1716.35	1.05	1434131.19	3188813.98	40.523106	-104.820818
	9779.00	89.90	268.93	7176.77	1797.85	787.64	-1806.34	0.64	1434129.02	3188724.01	40.523102	-104.821141
	9868.00	89.65	269.39	7177.12	1886.85	786.33	-1895.33	0.59	1434127.02	3188635.04	40.523098	-104.821461
	9958.00	89.84	268.81	7177.52	1976.85	784.92	-1985.31	0.68	1434124.92	3188545.07	40.523094	-104.821785
	10047.00	89.83	269.77	7177.78	2065.84	783.82	-2074.31	1.08	1434123.13	3188456.09	40.523091	-104.822105
	10137.00	89.56	269.63	7178.26	2155.84	783.35	-2164.30	0.34	1434121.96	3188366.10	40.523090	-104.822429
	10226.00	89.25	269.67	7179.18	2244.84	782.80	-2253.30	0.35	1434120.73	3188277.12	40.523088	-104.822749
	10316.00	89.22	269.53	7180.38	2334.83	782.17	-2343.29	0.16	1434119.40	3188187.14	40.523087	-104.823073
	10405.00	89.87	269.61	7181.09	2423.82	781.51	-2432.28	0.74	1434118.05	3188098.16	40.523085	-104.823393
	10494.00	89.90	270.66	7181.27	2512.81	781.72	-2521.28	1.18	1434117.57	3188009.16	40.523085	-104.823713
	10584.00	89.57	269.42	7181.68	2602.81	781.78	-2611.28	1.43	1434116.94	3187919.17	40.523085	-104.824037
	10673.00	89.77	270.23	7182.20	2691.80	781.51	-2700.27	0.94	1434115.98	3187830.18	40.523085	-104.824357
	10763.00	89.31	269.04	7182.92	2781.79	780.93	-2790.27	1.42	1434114.71	3187740.20	40.523083	-104.824680
	10852.00	89.53	270.69	7183.82	2870.78	780.72	-2879.26	1.87	1434113.81	3187651.21	40.523082	-104.825001
	10942.00	89.54	270.15	7184.55	2960.77	781.38	-2969.25	0.60	1434113.78	3187561.22	40.523084	-104.825324
	11031.00	89.82	269.69	7185.05	3049.76	781.26	-3058.25	0.61	1434112.96	3187472.23	40.523084	-104.825644
	11120.00	89.94	269.51	7185.23	3138.76	780.64	-3147.25	0.24	1434111.65	3187383.24	40.523082	-104.825964
	11210.00	89.83	270.52	7185.41	3228.75	780.66	-3237.25	1.13	1434110.98	3187293.25	40.523082	-104.826288
	11300.00	91.22	270.30	7184.59	3318.73	781.30	-3327.24	1.56	1434110.93	3187203.26	40.523084	-104.826612
	11389.00	91.88	271.08	7182.18	3407.68	782.38	-3416.20	1.15	1434111.31	3187114.30	40.523087	-104.826932
	11478.00	91.93	269.95	7179.22	3496.61	783.18	-3505.15	1.27	1434111.43	3187025.35	40.523089	-104.827252
	11568.00	91.55	269.47	7176.49	3586.57	782.72	-3595.10	0.68	1434110.28	3186935.40	40.523088	-104.827575
	11658.00	91.06	269.17	7174.44	3676.54	781.65	-3685.07	0.64	1434108.51	3186845.45	40.523085	-104.827899
	11747.00	90.98	268.46	7172.86	3765.52	779.81	-3774.04	0.80	1434105.98	3186756.50	40.523080	-104.828219
	11837.00	90.68	269.45	7171.55	3855.51	778.17	-3864.01	1.15	1434103.65	3186666.54	40.523075	-104.828543
	11927.00	91.00	269.23	7170.23	3945.50	777.13	-3954.00	0.43	1434101.92	3186576.57	40.523072	-104.828866
	12017.00	91.05	267.96	7168.62	4035.47	774.93	-4043.95	1.41	1434099.01	3186486.64	40.523066	-104.829190
	12106.00	91.79	269.10	7166.42	4124.43	772.65	-4132.89	1.53	1434096.05	3186397.72	40.523060	-104.829510
	12196.00	91.66	269.23	7163.71	4214.39	771.33	-4222.84	0.20	1434094.04	3186307.79	40.523056	-104.829833
	12286.00	91.57	269.66	7161.17	4304.36	770.46	-4312.80	0.49	1434092.47	3186217.84	40.523054	-104.830157
	12375.00	91.39	269.16	7158.87	4393.33	769.55	-4401.77	0.60	1434090.87	3186128.89	40.523051	-104.830477
	12465.00	91.37	270.18	7156.71	4483.30	769.03	-4491.74	1.13	1434089.66	3186038.93	40.523050	-104.830801
	12554.00	91.65	269.38	7154.36	4572.27	768.69	-4580.71	0.95	1434088.63	3185949.97	40.523049	-104.831121
	12644.00	91.91	270.91	7151.56	4662.21	768.91	-4670.66	1.72	1434088.16	3185860.02	40.523049	-104.831444
	12733.00	90.84	269.84	7149.43	4751.17	769.50	-4759.63	1.70	1434088.05	3185771.05	40.523051	-104.831764
	12822.00	91.27	270.26	7147.79	4840.15	769.57	-4848.62	0.68	1434087.44	3185682.07	40.523051	-104.832084
	12912.00	91.50	268.87	7145.61	4930.12	768.89	-4938.59	1.56	1434086.06	3185592.11	40.523049	-104.832408
	13002.00	91.80	270.31	7143.02	5020.08	768.25	-5028.54	1.63	1434084.73	3185502.16	40.523047	-104.832731
	13091.00	91.45	269.27	7140.50	5109.04	767.92	-5117.51	1.23	1434083.71	3185413.21	40.523046	-104.833051
	13180.00	91.73	270.11	7138.03	5198.00	767.44	-5206.47	0.99	1434082.54	3185324.26	40.523045	-104.833371
	13270.00	91.56	270.07	7135.45	5287.96	767.58	-5296.43	0.19	1434081.99	3185234.30	40.523045	-104.833695
	13360.00	91.89	270.83	7132.74	5377.90	768.29	-5386.39	0.92	1434082.00	3185144.34	40.523047	-104.834018
	13449.00	91.00	269.15	7130.49	5466.87	768.27	-5475.35	2.14	1434081.30	3185055.38	40.523047	-104.

Comments	MD (ft)	Incl (°)	Azim True (°)	TVD (ft)	VSEC (ft)	NS (ft)	EW (ft)	DLS (°/100ft)	Northing (ftUS)	Easting (ftUS)	Latitude (°)	Longitude (°)
Description	Part	MD From (ft)	MD To (ft)	EOU Freq (ft)	Hole Size	Casing Diameter (in)	Survey Tool Type	Borehole / Survey				
	1	0.000	25.000	1/98.425	13.500	9.625	NAL_MWD_IFR1-Depth Only	Original Hole / Golden Eagle 28N-1B-M IFR 0' to 15098' Definitive				
	1	25.000	25.000	Act Stns	13.500	9.625	NAL_MWD_IFR1-Depth Only	Original Hole / Golden Eagle 28N-1B-M IFR 0' to 15098' Definitive				
	1	25.000	1818.000	Act Stns	13.500	9.625	NAL_MWD_IFR1	Original Hole / Golden Eagle 28N-1B-M IFR 0' to 15098' Definitive				
	1	1818.000	15098.000	Act Stns	8.500	5.500	NAL_MWD_IFR1+MS	Original Hole / Golden Eagle 28N-1B-M IFR 0' to 15098' Definitive				