

# HALLIBURTON

iCem<sup>®</sup> Service

**K P KAUFFMAN CO INC-EBUS**

**For: RICK RAMOS**

Date: Friday, October 04, 2019

**UPRR 43 PAN AM I 10**

KPK UPRR 43 PAN AM I 10 PLUG

Job Date: Friday, October 04, 2019

Sincerely,

**NICK KORANFEL & CREW**

Customer: K P KAUFFMAN CO INC-EBUS  
Job: KPK UPRR 43 PAN AM I 10 PLUG

icem<sup>®</sup> Service

## 2.0 Real-Time Job Summary

### 2.1 Job Event Log

Type	Seq. No.	Activity	Graph Label	Date	Time	Source	DS Pump Press (psi)	DH Density (ppg)	Comb Pump Rate (bbl/min)	Pump Stg Tot (bbl)	Comments
Event	1	Call Out	Call Out	10/4/2019	04:00:00	USER					CREW CALLED OUT AT 04:00, REQUESTED ON LOCATION 10:00. CREW PICKED UP CEMENT, MATERIALS, BULK 660 11633848, AND PUMP 11368474.
Event	2	Pre-Convoy Safety Meeting	Pre-Convoy Safety Meeting	10/4/2019	07:00:00	USER					CREW DISCUSSED ROUTES, HAZARDS, AND COMMUNICATION WITH CREW.
Event	3	Crew Leave Yard	Crew Leave Yard	10/4/2019	07:15:00	USER					STARTED JOURNEY MANAGEMENT.
Event	4	Arrive at Location from Service Center	Arrive at Location from Service Center	10/4/2019	08:00:00	USER					END JOURNEY MANAGEMENT. MEET WITH CO. MAN TO DISCUSS JOB: 4.5" CASING: 10.5 LB/FT, CAST IRON BRIDGE PLUG SET AT 4,629'. CUSTOMER REQUESTED 20 SK PLUG ON TOP OF CAST IRON BRIDGE PLUG. PUMP FRESH WATER DISPLACEMENT 16.7 BBLs.
Event	5	Pre-Rig Up Safety Meeting	Pre-Rig Up Safety Meeting	10/4/2019	08:15:00	USER					HAZARD HUNT. DISCUSSED POSSIBLE HAZARDS ASSOCIATED WITH LOCATION, RIG UP, AND WEATHER.

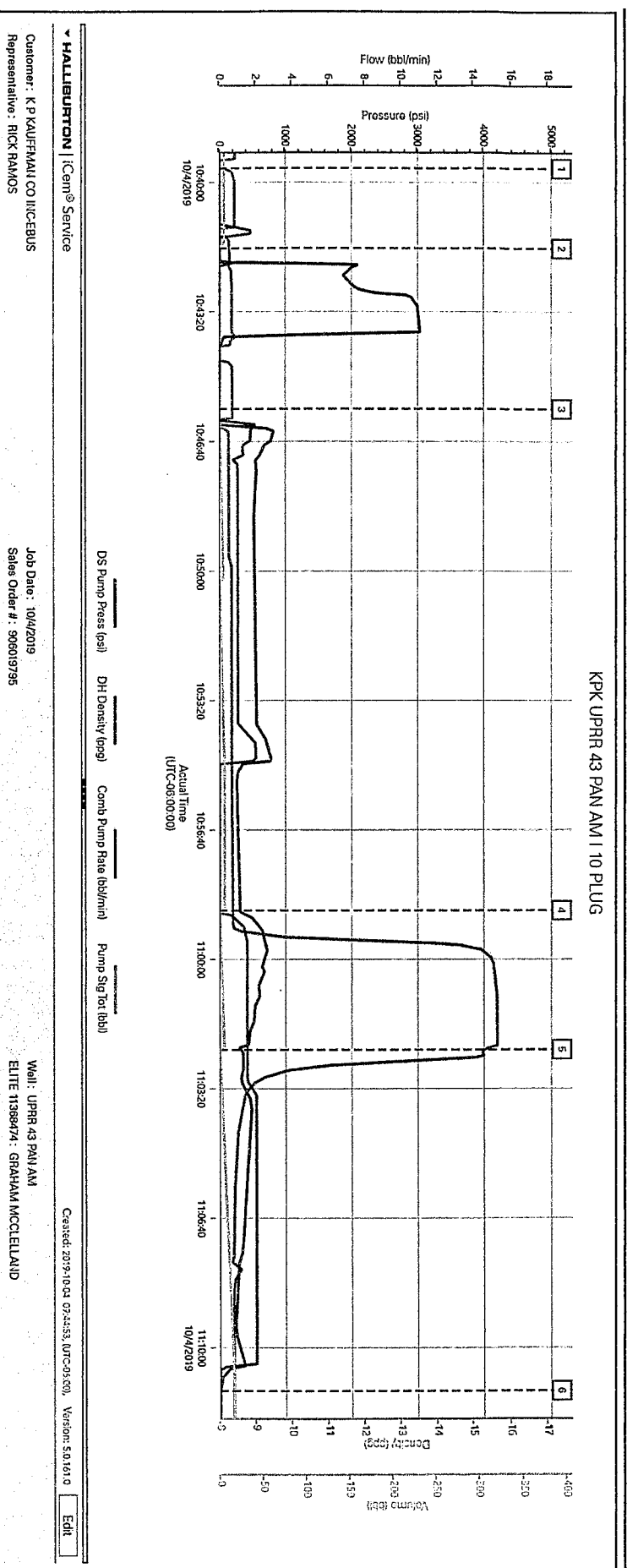
# HALLIBURTON

Customer: K P KAUFFMAN CO INC-EBUS  
Job: KPK UPRR 43 PAN AM I 10 PLUG  
Case: KPK UPRR 43 PAN AM I 10 PLUG | SO#: 906019795

Event	15	Rig-Down Completed	Rig-Down Completed	10/4/2019	12:00:00	USER	ALL HALLIBURTON ITEMS WERE STOWED FOR TRAVEL, AND LOCATION WAS CLEAN.
Event	16	Safety Meeting - Departing Location	Safety Meeting - Departing Location	10/4/2019	12:15:00	USER	CREW DISCUSSED ROUTES HAZARDS AND COMMUNICATION WITH CREW.
Event	17	Crew Leave Location	Crew Leave Location	10/4/2019	12:30:00	USER	THANK YOU FOR CHOOSING HALLIBURTON- NICK KORNAFEL AND CREW

## 3.0 Attachments

### 3.1 KPK UPRR 43 PAN AM I 10 PLUG-Custom Results.png



# HALLIBURTON

iCem<sup>®</sup> Service

**K P KAUFFMAN CO INC-EBUS**

**For: RICK RAMOS**

Date: Monday, October 07, 2019

**UPRR 43 PAN AM I 10**

KPK UPRR 43 PAN AM I 10

Job Date: Monday, October 07, 2019

Sincerely,

**NICK KORNAFEL & CREW**

# HALLIBURTON

Customer: K P KAUFFMAN CO INC-EBUS  
 Job: KPK UPRR 43 PAN AM I 10 DAY 2  
 Case: KPK UPRR 43 PAN AM I 10 | SO#: 906019795

## 2.0 Real-Time Job Summary

### 2.1 Job Event Log

Type	Seq. No.	Activity	Graph Label	Date	Time	Source	DS Pump Press (psi)	DH Density (ppg)	Comb Pump Rate (bbl/min)	Pump Stg Tot (bbl)	Comments
Event	1	Call Out	Call Out	10/7/2019	03:00:00	USER					CREW CALLED OUT AT 03:00, REQUESTED ON LOCATION 07:00. CREW PICKED UP CEMENT, CHEMICALS, AND PLUG CONTAINER FROM FT. LUPTON, CO. BULK 660 11633848 AND PUMP 11826999.
Event	2	Pre-Convoy Safety Meeting	Pre-Convoy Safety Meeting	10/7/2019	05:55:00	USER					CREW DISCUSSED ROUTES, HAZARDS, AND COMMUNICATION WITH CREW.
Event	3	Crew Leave Yard	Crew Leave Yard	10/7/2019	06:00:00	USER					STARTED JOURNEY MANAGEMENT.
Event	4	Arrive at Location from Service Center	Arrive at Location from Service Center	10/7/2019	06:45:00	USER					END JOURNEY MANAGEMENT. MEET WITH CO. MAN TO DISCUSS JOB, SURFACE CASING- 8.625", RETAINER SET AT 2,450', PERFORATIONS AT 2,500 FEET, CUSTOMER REQUESTS 40 SKS PUMPED INTO PERFORATIONS WITH 50 FT OF CEMENT LEFT ON TOP OF RETAINER.
Event	5	Pre-Rig Up Safety Meeting	Pre-Rig Up Safety Meeting	10/7/2019	07:00:00	USER					HAZARD HUNT. DISCUSSED POSSIBLE HAZARDS ASSOCIATED WITH LOCATION, RIG UP, AND WEATHER.

iCem Service

(v. 5.0.161.0)

# HALLIBURTON

Customer: K P KAUFFMAN CO INC-EBUS  
 Job: KPR UPRR 43 PAN AM I 10 DAY 2  
 Case: KPR UPRR 43 PAN AM I 10 | SO#: 906019795

Event	6	Rig-Up Equipment	Rig-Up Equipment	10/7/2019	07:30:00	USER							CREW STAGED EQUIPMENT AND RIGGED UP BULK, IRON AND WATER HOSES TO PERFORM JOB.
Event	7	Pre-Job Safety Meeting	Pre-Job Safety Meeting	10/7/2019	09:15:00	USER	-5.00	8.58	0.00		6.20		SAFETY MEETING WITH HALLIBURTON, AND RIG PERSONNEL. CREW COMMUNICATED POTENTIAL SAFETY HAZARDS, AND JOB DETAILS.
Event	8	Start Job	Start Job	10/7/2019	09:29:41	COM11	-9.00	8.78	0.00		0.00		BEGIN RECORDING JOB DATA
Event	9	Test Lines	Test Lines	10/7/2019	09:31:41	COM11	38.00	8.31	0.00		1.10		TESTED ELECTRONIC KICK OUTS AT 500 PSI THEN PRESSURE TESTED IRON TO 3,000 PSI, PRESSURE HELD WITH NO LEAKS.
Event	10	Circulate Well	Circulate Well	10/7/2019	09:38:36	COM11	259.00	8.29	2.00		4.10		PUMPED 50 BBLs OF WATER INTO THE WELL, NEVER GOT RETURNS TO SURFACE.
Event	11	Pump Cement	Pump Cement	10/7/2019	10:09:32	COM11	869.00	15.87	2.70		0.00		PUMPED 40 SKS OF HALCEM G CEMENT AT 15. LB/GAL, 1.147 FT3/SK, 4.99 GAL/SK AT 2 BBL/MIN 1000 PSI.
Event	12	Pump Displacement	Pump Displacement	10/7/2019	10:12:07	COM11	0.00	-0.31	0.00		5.60		PUMPED 8.7 BBLs OF DISPLACEMENT AT 2 BBLs/MIN 680 PSI.
Event	13	Shutdown	Shutdown	10/7/2019	10:15:00	USER	495.00	8.00	2.20		5.80		SHUTDOWN UNTIL THE NEXT STAGE
Event	14	Start Job	Start Job	10/7/2019	13:28:01	COM11	6.00	7.90	0.00		58.40		BEGIN RECORDING JOB DATA FOR 3RD PLUG

iCem® Service

(v.5.0.161.0)

Created: Monday, October 07, 2019



# **HALLBURTON**

Customer: K P KAUFFMAN CO INC-EBUS  
 Job: KPK UPRR 43 PAN AM I 10 DAY 2  
 Case: KPK UPRR 43 PAN AM I 10 | SO#: 906019795

Event	15	Circulate Well	Circulate Well	10/7/2019	13:54:01	COM11	31.00	7.44	0.00	3.70	ESTABLISH CIRCULATION
Event	16	Pump Cement	Pump Cement	10/7/2019	13:56:49	COM11	2.00	7.76	0.00	0.00	PUMPED 240 SKS OF HALCEM G CEMENT AT 15.8 LB/GAL, 1.147 FT3/SK, 4.99 GAL/SK AT 2 BBL/MIN AT 30 PSI. DENSITY VERIFIED BY PRESSURIZED MUD SCALES.
Event	17	Pump Displacement	Pump Displacement	10/7/2019	14:18:09	COM11	-1.00	17.29	0.70	0.00	PUMPED 1.5 BBLS OF FRESH WATER DISPLACEMENT
Event	18	Shutdown	Shutdown	10/7/2019	14:24:13	COM11	-2.00	7.79	0.00	1.20	BROUGHT CEMENT TO SURFACE AND SHUTDOWN.
Event	19	End Job	End Job	10/7/2019	14:45:00	USER	4.00	7.83	0.00	1.20	STOP RECORDING JOB DATA.
Event	20	Pre-Rig Down Safety Meeting	Pre-Rig Down Safety Meeting	10/7/2019	15:50:00	USER					DISCUSSED POSSIBLE HAZARDS ASSOCIATED WITH WEATHER, LOCATION AND RIGGING DOWN IRON AND HOSES.
Event	21	Rig-Down Completed	Rig-Down Completed	10/7/2019	16:30:00	USER					ALL HALLBURTON ITEMS WERE STOWED FOR TRAVEL, AND LOCATION WAS CLEAN.
Event	22	Safety Meeting - Departing Location	Safety Meeting - Departing Location	10/7/2019	17:00:00	USER					CREW DISCUSSED ROUTES HAZARDS AND COMMUNICATION WITH CREW.
Event	23	Crew Leave Location	Crew Leave Location	10/7/2019	17:05:00	USER					CREW DEPARTS LOCATION, THANK YOU FOR CHOOSING HALLBURTON NICK KORNAEFEL AND CREW.

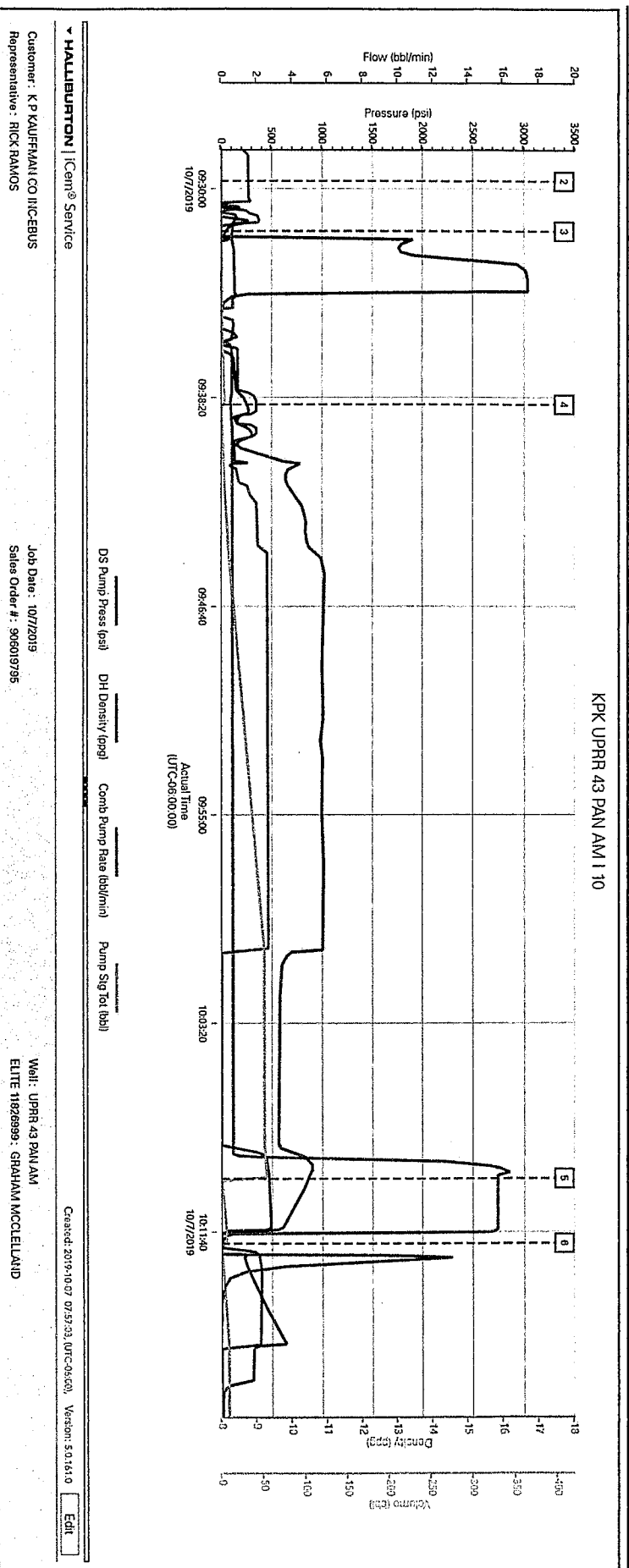
iCem<sup>®</sup> Service

(v. 5.0.161.0)

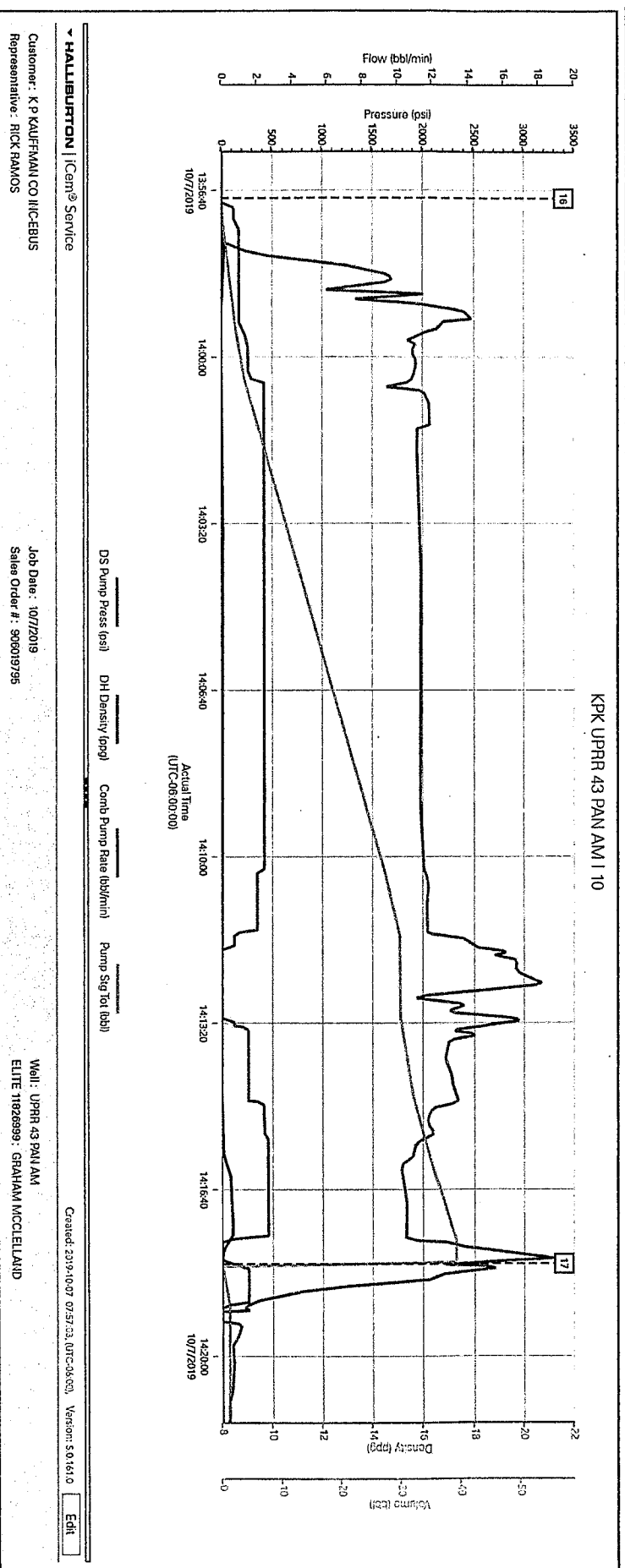
Created: Monday, October 07, 2019

3.0 Attachments

3.1 KPK UPRR 43 PAN AM I 10-Custom Results.png



## 3.2 KPK UPRR 43 PAN AM I 10-Custom Results (1).png



## Cementing Job Summary

*The Road to Excellence Starts with Safety*

Sold To #: 303209	Ship To #: 9003470	Quote #:	Sales Order #: 0906019795
Customer: K P KAUFFMAN CO INC-EBUS		Customer Rep: Rick Ramos	
Well Name: UPRR 43 PAN AM I 10,WELD	Well #: 9003470	API/UWI #:	
Field:	City (SAP): ERIE	County/Parish: WELD	State: COLORADO
Legal Description:			
Contractor: UNKNOWN		Rig/Platform Name/Num: WORKOVER RIG	
Job BOM:			
Well Type: OIL			
Sales Person: HALAMERICA\HX37727		Srv Supervisor: Nikolaus Kornafel	
Job			

Formation Name	
Formation Depth (MD)	Top
Form Type	BHST
Job depth MD	4629ft
Water Depth	
Perforation Depth (MD)	From

Well Data										
Description	New / Used	Size in	ID in	Weight lbm/ft	Thread	Grade	Top MD ft	Bottom MD ft	Top TVD ft	Bottom TVD ft
Tubing		2.375	1.995	4.7		J-55	0	4625		0
Casing		4.5	4.052	10.5		N-80	0	4629		0

Tools and Accessories									
Type	Size in	Qty	Make	Depth ft	Type	Size in	Qty	Make	
Guide Shoe	4.5			4629	Top Plug	4.5		HES	
Float Shoe	4.5				Bottom Plug	4.5		HES	
Float Collar	4.5				SSR plug set	4.5		HES	
Insert Float	4.5				Plug Container	4.5		HES	
Stage Tool	4.5				Centralizers	4.5		HES	

### Fluid Data

Stage/Plug #: 1										
Fluid #	Stage Type	Fluid Name	Qty	Qty UoM	Mixing Density lbm/gal	Yield ft3/sack	Mix Fluid Gal	Rate bbl/min	Total Mix Fluid Gal	
1	PLUG 1	HALCEM (TM) SYSTEM	20	sack	15.8	1.147	4.99	2	100	

Fluid #	Stage Type	Fluid Name	Qty	Qty UoM	Mixing Density lbm/gal	Yield ft3/sack	Mix Fluid Gal	Rate bbl/min	Total Mix Fluid Gal	
2	PLUG 2	HALCEM (TM) SYSTEM	40	sack	15.8	1.147	4.99	2	200	

## Cementing Job Summary

Fluid #	Stage Type	Fluid Name	Qty	Qty UoM	Mixing Density lbm/gal	Yield ft <sup>3</sup> /sack	Mix Fluid Gal	Rate bbl/min	Total Mix Fluid Gal
3	PLUG 3	HALCEM (TM) SYSTEM	240	sack	15.8	1.19	4.99	2	1,200

Cement Left In Pipe	Amount	Reason
Mix Water:	pH 7	Mix Water Chloride: 0 ppm
Mix Water Temperature:	69 °F	
Cement Temperature:	N/A	Plug Displaced by: N/A
Disp. Temperature:	69 °F	
Plug Bumped?	N/A	Bump Pressure: N/A
Floats Held?	N/A	
Cement Returns:	CEMENT TO SURFACE	Returns Density: N/A
Returns Temperature:	N/A	

**Comment** PLUG 1: ESTABLISHED CIRCULATION AND THEN PUMPED 20 SKS OF 15.8 PPG HALCEM ON TOP OF THE CAST BRIDGE PLUG PLACED AT 4,629 AND THEN DISPLACED THE BALANCED PLUG WITH 16.7 BBLS OF FRESH WATER.

PLUG 2: ESTABLISHED CIRCULATION AND THEN PUMPED 40 SKS OF 15.8 PPG HALCEM INTO THE PERFORATIONS AT 2,500 FEET AND LEFT 50 FT OF CEMENT ON TOP OF THE RETAINER AT 2,450 FEET.

PLUG 3: ESTABLISHED CIRCULATION AND THEN PUMPED 240 SKS OF 15.8 PPG HALCEM INTO THE PERFORATIONS. SHUTDOWN AND STUNG OUT AND THEN BROUGHT CEMENT TO SURFACE.

<b>Field Ticket Number:</b> 906019795	<b>Field Ticket Date:</b> Monday, October 7, 2019	<b>Planning Order #:</b> NA
<b>Bill To:</b> K P KAUFFMAN CO INC-EBUS DONOTMAIL-1675 BRDWAY STE 2800 DENVER CO 80202	<b>Job Name:</b> PTA <b>Order Type:</b> ZOH <b>Well Name:</b> UPRR 43 PAN AM I 10,WELD 9003470 <b>Company Code:</b> 1100 <b>Customer PO No.:</b> NA <b>AFE:</b> <b>Shipping Point:</b> Fort Lupton, CO Shipping Point <b>Sales Office:</b> ROCKY MOUNTAINS BD <b>Well Type:</b> OIL <b>Well Category:</b> DEVELOPMENT <b>Rig Name/#:</b> WORKOVER RIG	
<b>Ship To:</b> UPRR 43 PAN AM I 10,WELD UPRR 43 PAN AM I 10 ERIE CO 80516 USA		

Material	Description	QTY	UOM	Unit Amount	Gross Amount	Discount	Net Amount
14141	CMT VIA ANNULUS BOM 14141	1	JOB		0.00		0.00
16091	ZI - PUMPING CHARGE FEET/METERS (FT/M) DEPTH	1 FT 4629	EA	8,266.00 USD / 1.00 EA	8,266.00		2,893.10
452986	CMT, HalCem (TM) system	20	SK		885.20		309.82
452986	CMT, HalCem (TM) system	130	SK		5,753.80		2,013.83
3965	HANDLE&DUMP SVC CHRG, CMT&ADDITIVES,ZI NUMBER OF EACH Unit of Measurement	300 1 EA	CF	5.49 USD / 1.00 CF	1,647.00		576.45
100008028	CHEM, SUGAR,GRANULATED, 50LB BAG	100	LB	6.96 USD / 1.00 LB	696.00		243.60
1	ZI-MILEAGE FROM NEAREST HES BASE,/UNIT Number of Units	60 1	MI	9.79 USD / 1.00 MI	587.40		205.59
2	MILEAGE FOR CEMENTING CREW Number of Units	60 2	MI	5.76 USD / 1.00 MI	691.20		241.92
76400	MILEAGE,CMT MTLs DEL/RET MIN NUMBER OF TONS	30 14	MI	3.35 USD / 1.00 MI	1,407.00		492.45
16092	ADDITIONAL HOURS (PUMPING EQUIPMENT), ZI HOURS HR/DAY/WEEK/MTH/YEAR/JOB/RUN	9 1 H	EA	1,139.00 USD / 1.00 EA	10,251.00		10,251.00
452986	CMT, HalCem (TM) system	150	SK		6,639.00		6,639.00
<b>Totals</b>				<b>USD</b>	<b>\$ 36,823.60</b>		<b>\$ 23,866.76</b>

## Field Ticket Signature

Field Ticket Number: 906019795

Field Ticket Date: Monday, October 7, 2019

Planning Order #: NA

**Bill To:**

K P KAUFFMAN CO INC-EBUS  
DONOTMAIL-1675 BRDWAY STE 2800  
DENVER CO 80202

**Job Name:**

PTA

**Order Type:**

ZOH

**Well Name:**

UPRR 43 PAN AM I 10,WELD 9003470

**Company Code:**

1100

**Customer PO No.:**

NA

**AFE :****Shipping Point:**

Fort Lupton, CO Shipping Point

**Sales Office:**

ROCKY MOUNTAINS BD

**Well Type:**

OIL

**Well Category:**

DEVELOPMENT

**Rig Name/#:**

WORKOVER RIG

**Ship To:**

UPRR 43 PAN AM I 10,WELD  
UPRR 43 PAN AM I 10  
ERIE CO 80516  
USA

THIS OUTPUT DOES NOT INCLUDE TAXES. APPLICABLE SALES TAX WILL BE BILLED ON THE FINAL INVOICE. CUSTOMER HEREBY ACKNOWLEDGES RECEIPT OF THE MATERIALS AND SERVICES DESCRIBED ABOVE, ON ANY PRECEDING PAGES, AND ATTACHED DOCUMENTS.

Gross Amount Total: \$ 36,823.60  
Item Discount Total:  
Net Amount Total: \$ 23,866.76 USD

Customer Representative Signature:

Date:

Rick Ramos

Nikolaus Kornafel

Customer Representative

Halliburton Representative

Was our HSE performance satisfactory? (Health, Safety, Environment)

☐ Yes☐ No

Were you satisfied with our equipment?

☐ Yes☐ No

Were you satisfied with our people?

☐ Yes☐ No

Comments:

Customer Stamp (if applicable):