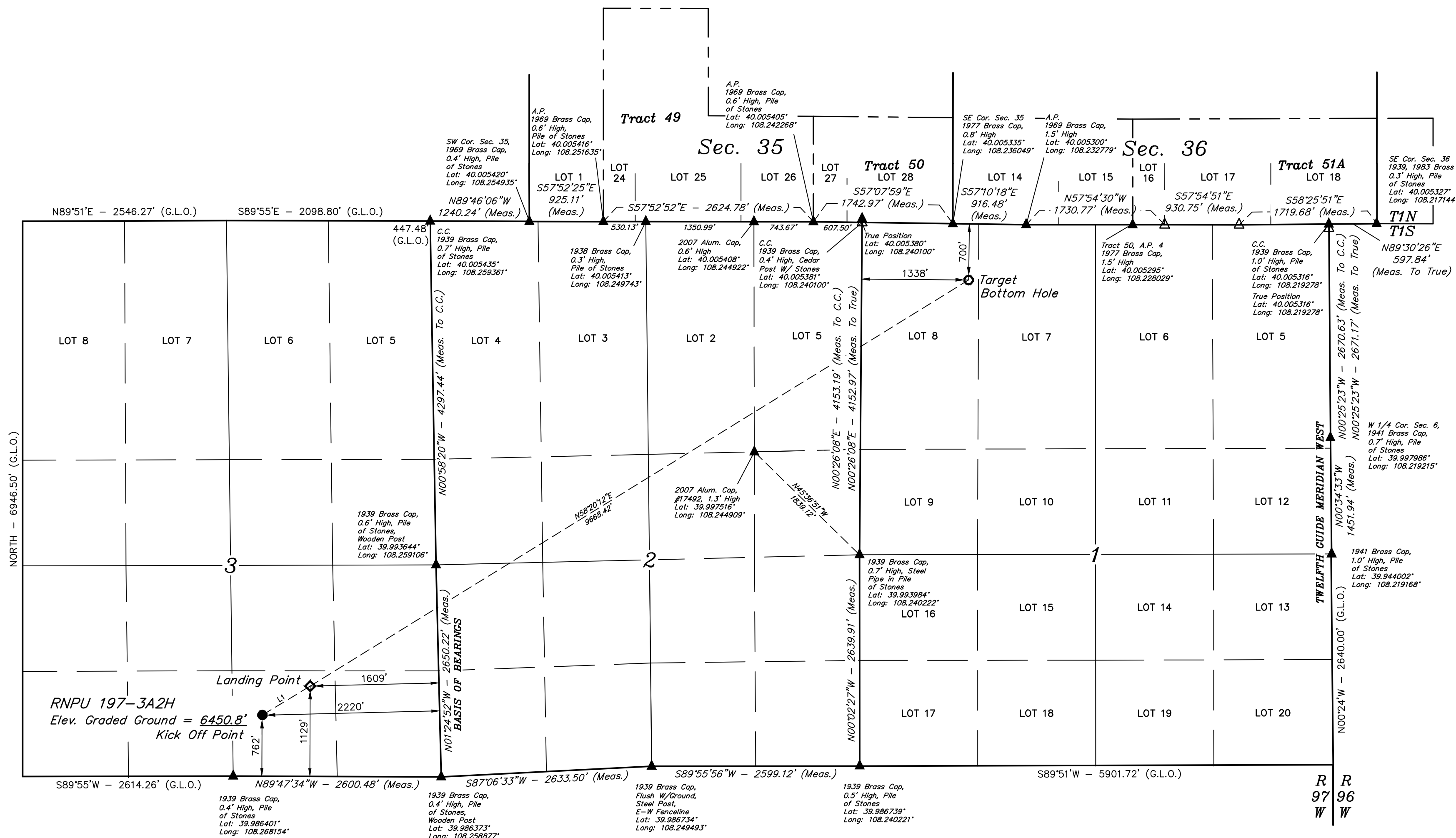
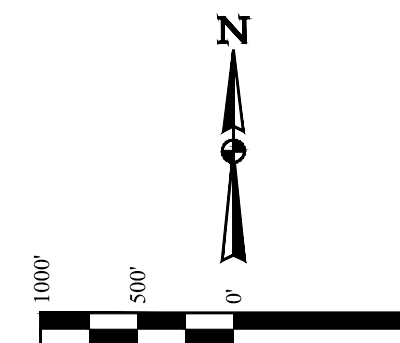


RNP 197-3A2H  
SW 1/4 SE 1/4, SECTION 3, T1S, R97W, 6th P.M.  
RIO BLANCO COUNTY, COLORADO

**BASIS OF BEARINGS**  
BEARINGS ARE BASED ON THE ASSUMPTION THAT THE WEST LINE OF THE SOUTHWEST 1/4 OF SECTION 2 BEARS N01°24'52"W.

**BASIS OF ELEVATION**  
BASIS OF ELEVATION IS MAGNOLIA TRIANGULATION STATION LOCATED IN THE NW 1/4 OF SECTION 9, T2S, R06W, 6th P.M. REPORTED FROM THE NATIONAL GEODETIC SURVEY AS BEING 7529 FEET (NAVD 88). WE MEASURED IT TO BE 7526.2'



**NOTE:**  
WELLBORE DATA PROVIDED BY XTO ENERGY, INC. & ROTATED TO MATCH PREVIOUS WELLBORE ORIENTATION.

LINE TABLE		
LINE	DIRECTION	LENGTH
L1	N58°48'24"E	703.71'

CERTIFICATE OF REGISTRATION  
THIS IS TO CERTIFY THAT THE ABOVE PLAT WAS PREPARED FROM FIELD NOTES OF ACTUAL SURVEYS MADE BY ME OR UNDER MY SUPERVISION AND THAT THE LOCATION HAS BEEN STAKED ON THE GROUND AS SHOWN ON THE PLAT AND THAT THE SAME ARE TRUE AND CORRECT TO THE BEST OF MY KNOWLEDGE AND BELIEF.  
*[Signature]*  
REGISTERED LAND SURVEYOR  
REGISTRATION NO. 3854  
STATE OF COLORADO 97-22-19

- LEGEND:**
- = PROPOSED WELLHEAD/KICK OFF POINT.
  - = LANDING POINT.
  - = TARGET BOTTOM HOLE.
  - △ = SECTION CORNERS LOCATED. (NAD 83)
  - △ = SECTION CORNERS RE-ESTABLISHED. (Not Set on Ground.) (NAD 83)

**NOTE:**  
Distances referenced on plat to section lines are perpendicular.

REV: 7 07-22-19 C.VIE (BOTTOM HOLE MOVE & REMOVE LEASE DATA) PDOP = 1.8

NAD 83 (SURFACE LOCATION)	NAD 83 (KICK OFF POINT)	NAD 83 (LANDING POINT)	NAD 83 (TARGET BOTTOM HOLE)
LATITUDE = 39°59'18.56" (39.988490)	LATITUDE = 39°59'18.56" (39.988490)	LATITUDE = 39°59'22.16" (39.989489)	LATITUDE = 40°00'12.26" (40.003406)
LONGITUDE = 108°16'00.72" (108.266866)	LONGITUDE = 108°16'00.72" (108.266866)	LONGITUDE = 108°15'52.98" (108.264718)	LONGITUDE = 108°14'07.25" (108.235347)
NAD 27 (SURFACE LOCATION)	NAD 27 (KICK OFF POINT)	NAD 27 (LANDING POINT)	NAD 27 (TARGET BOTTOM HOLE)
LATITUDE = 39°59'18.67" (39.988518)	LATITUDE = 39°59'18.67" (39.988518)	LATITUDE = 39°59'22.26" (39.989518)	LATITUDE = 40°00'12.37" (40.003435)
LONGITUDE = 108°15'58.41" (108.266224)	LONGITUDE = 108°15'58.41" (108.266224)	LONGITUDE = 108°15'50.67" (108.264076)	LONGITUDE = 108°14'04.94" (108.234706)
STATE PLANE NAD 83 (CO. NORTH)	STATE PLANE NAD 83 (CO. NORTH)	STATE PLANE NAD 83 (CO. NORTH)	STATE PLANE NAD 83 (CO. NORTH)
N: 1250748.22 E: 2224847.51	N: 1250748.22 E: 2224847.51	N: 1251093.43 E: 2225460.45	N: 1255905.33 E: 2233842.58
STATE PLANE NAD 27 (CO. NORTH)	STATE PLANE NAD 27 (CO. NORTH)	STATE PLANE NAD 27 (CO. NORTH)	STATE PLANE NAD 27 (CO. NORTH)
N: 250748.91 E: 1225007.36	N: 250748.91 E: 1225007.36	N: 251094.13 E: 1225620.29	N: 255906.03 E: 1234002.32

**UETAH**  
ENGINEERING & LAND SURVEYING  
Corporate Office: \* 85 South 200 East  
Vernal, UT 84078 \* (435) 789-1017

SURVEYED BY DAYTON SLAUGH, D.P. 02-27-19 SCALE  
DRAWN BY T.L.L. 03-01-19 1" = 1000'

**WELL LOCATION PLAT**