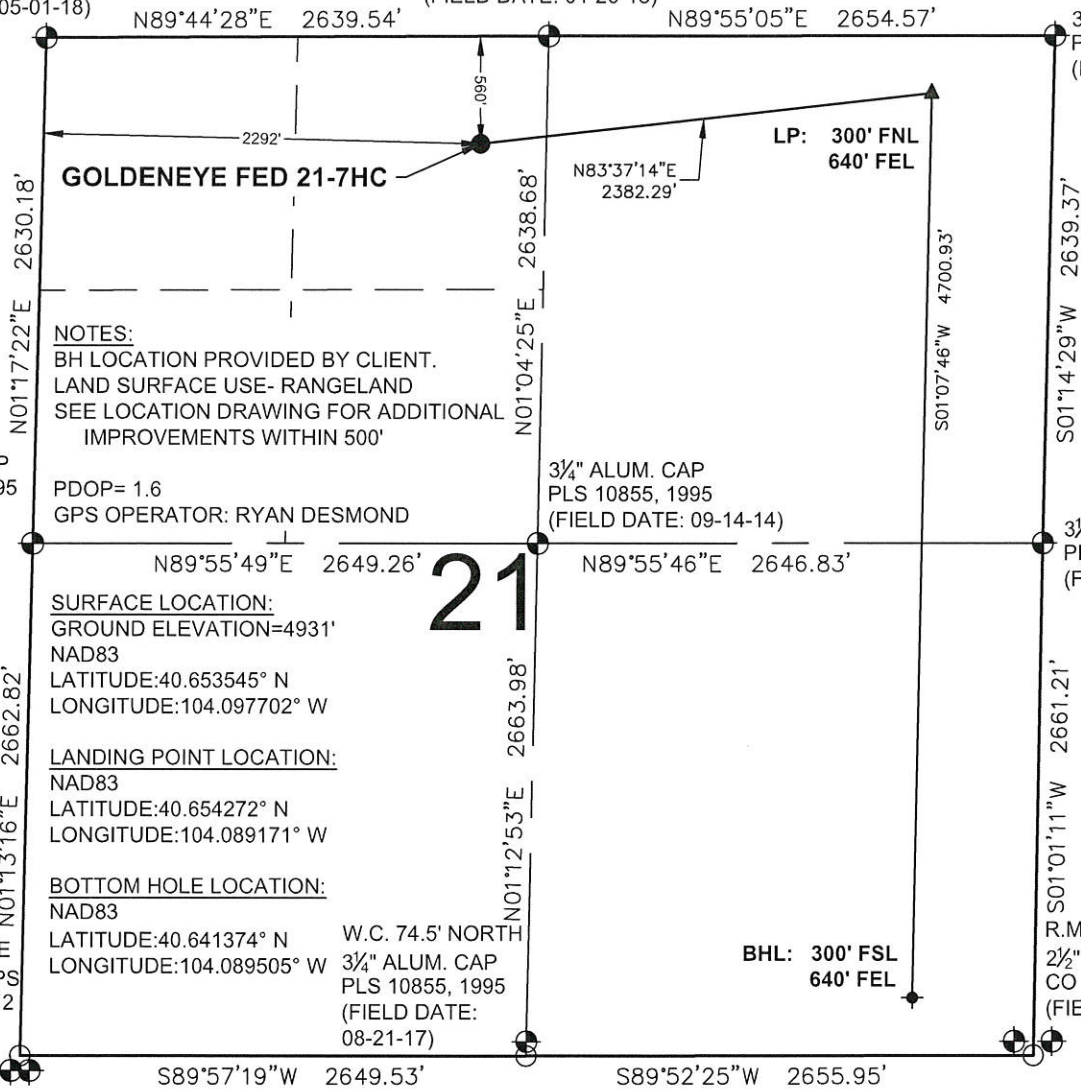


# GOLDENEYE FED 21-7HC WELL LOCATION CERTIFICATE

3/4" ALUM. CAP  
PLS 20680, 2018  
(FIELD DATE: 05-01-18)

MARKED STONE  
(FIELD DATE: 04-26-18)

3/4" ALUM. CAP  
PLS 38304, 2017  
(FIELD DATE: 10-16-17)



**NOTES:**  
BH LOCATION PROVIDED BY CLIENT.  
LAND SURFACE USE- RANGELAND  
SEE LOCATION DRAWING FOR ADDITIONAL  
IMPROVEMENTS WITHIN 500'

3/4" ALUM. CAP  
PLS 10855, 1995  
(FIELD DATE:  
04-26-18)

PDOP= 1.6  
GPS OPERATOR: RYAN DESMOND

3/4" ALUM. CAP  
PLS 10855, 1995  
(FIELD DATE: 09-14-14)

3/4" ALUM. CAP  
PLS 10855, 1995  
(FIELD DATE: 08-29-17)

**SURFACE LOCATION:**  
GROUND ELEVATION=4931'  
NAD83  
LATITUDE:40.653545° N  
LONGITUDE:104.097702° W

**LANDING POINT LOCATION:**  
NAD83  
LATITUDE:40.654272° N  
LONGITUDE:104.089171° W

**BOTTOM HOLE LOCATION:**  
NAD83  
LATITUDE:40.641374° N  
LONGITUDE:104.089505° W

W.C. 74.5' NORTH  
3/4" ALUM. CAP  
PLS 10855, 1995  
(FIELD DATE:  
08-21-17)

BHL: 300' FSL  
640' FEL

R.M. 124' SE, 122' SW  
2 1/2" ALUM. CAPS  
CO 17492, 2011  
(FIELD DATE: 08-19-17)

R.M. 90' NW, NE  
2 1/2" ALUM. CAPS  
PLS 28285, 2012  
(FIELD DATE:  
08-23-17)

## LEGEND

- = EXISTING MONUMENT
- = CALCULATED POSITION
- = PROPOSED WELL
- ◆ = EXISTING WELL
- ▲ = BOTTOM HOLE
- ▲ = LANDING POINT
- LP = LANDING POINT
- BHL = BOTTOM HOLE LOCATION
- W.C. = WITNESS CORNER
- R.M. = REFERENCE MONUMENT

## WELL GOLDENEYE FED 21-7HC TO BE LOCATED 560' FNL & 2292' FWL

### NOTES:

- THIS FIELD SURVEY CONFORMS TO THE MINIMUM STANDARDS SET BY THE C.O.G.C.C., RULE NO. 215
- ALL DISTANCES AND BEARINGS SHOWN HEREON ARE GROUND VALUES AS GPS MEASURED IN THE FIELD, WITH TIES TO WELLS MEASURED PERPENDICULAR TO LINES SHOWN HEREON. THIS LOW DISTORTION PROJECTION (LDP) IS BASED ON THE NORTH AMERICAN DATUM OF 1983, U.S. SURVEY FOOT WITH A LATITUDE ORIGIN OF 40.655085°N, A CENTRAL MERIDIAN LONGITUDE OF 104.086861°W, AND A SCALE FACTOR ON THE CENTRAL MERIDIAN OF 1.000232 (EXACT). THE LDP BASIS OF BEARINGS IS GEODETIC NORTH.
- FIELD VERIFICATION OF MONUMENTS COMPLETED WITHIN 1 YEAR OF SIGNATURE DATE, UNLESS OTHERWISE NOTED.

I, ROBERT J. GUFFEY, A LICENSED PROFESSIONAL LAND SURVEYOR IN THE STATE OF COLORADO, DO HEREBY STATE THAT THIS WELL LOCATION CERTIFICATE WAS MADE FROM AN ACTUAL FIELD SURVEY PERFORMED UNDER MY RESPONSIBLE CHARGE ON THE DATE SHOWN HEREON AND CORRECTLY SHOWS THE LOCATION OF THE WELL SHOWN HEREON, AS STAKED ON THE GROUND, AND THE LOCATION OF THE LINES OF THE PUBLIC LAND SURVEY SYSTEM TO MY KNOWLEDGE, INFORMATION, AND BELIEF. THIS CERTIFICATE DOES NOT REPRESENT A LAND SURVEY PLAT OR IMPROVEMENT SURVEY PLAT AS DEFINED BY C.R.S. 38-51-102 AND IS IN ACCORDANCE WITH THE APPLICABLE STANDARDS OF PRACTICE FOR PROFESSIONAL LAND SURVEYING. THIS CERTIFICATE IS NOT A GUARANTY OR WARRANTY, EITHER EXPRESSED OR IMPLIED.

ROBERT J. GUFFEY, PLS 20680  
COLORADO LICENSED PROFESSIONAL LAND SURVEYOR  
FOR AND ON BEHALF OF P.F.S., LLC  
d.b.a. ASCENT GEOMATICS SOLUTIONS



SHEET 1 OF 1



FIELD DATE:  
04-27-18  
DRAWING DATE:  
07-01-19  
BY:  
JW  
CHECKED:  
DNS

WELL NAME:  
GOLDENEYE FED 21-7HC  
SURFACE LOCATION:  
NE 1/4 NW 1/4 SEC. 21, T8N, R60W, 6TH P.M.  
WELD COUNTY, COLORADO

