

APACHE CANYON 18-07 API# 05-071-08887 – TIMBER CREEK
OGCC OPERATOR NUMBER 10672 - DATE: OCTOBER 03, 2019
CORRECTIVE ACTIONS COMPLETED REGARDING COGCC FIR DOCUMENT # 689901231



Photo 1: Once the sediment controls were placed at the toe of the cut slope, the sound walls were replaced around the liquid ring compressor.

APACHE CANYON 18-07 API# 05-071-08887 – TIMBER CREEK
OGCC OPERATOR NUMBER 10672 - DATE: OCTOBER 03, 2019
CORRECTIVE ACTIONS COMPLETED REGARDING COGCC FIR DOCUMENT # 689901231



Photo 2: Run off is now directed toward the culvert inlet at the entrance of the well pad.

APACHE CANYON 18-07 API# 05-071-08887 – TIMBER CREEK
OGCC OPERATOR NUMBER 10672 - DATE: OCTOBER 03, 2019
CORRECTIVE ACTIONS COMPLETED REGARDING COGCC FIR DOCUMENT # 689901231



Photo 3: Erosion control blankets were installed where the ground was disturbed for soil stabilization. An approved CPW seed mix was hand broadcast to promote the establishment of vegetation. (5) rock socks were installed in the flow line to filter sediment until vegetation becomes established.

APACHE CANYON 18-07 API# 05-071-08887 – TIMBER CREEK
OGCC OPERATOR NUMBER 10672 - DATE: OCTOBER 03, 2019
CORRECTIVE ACTIONS COMPLETED REGARDING COGCC FIR DOCUMENT # 689901231

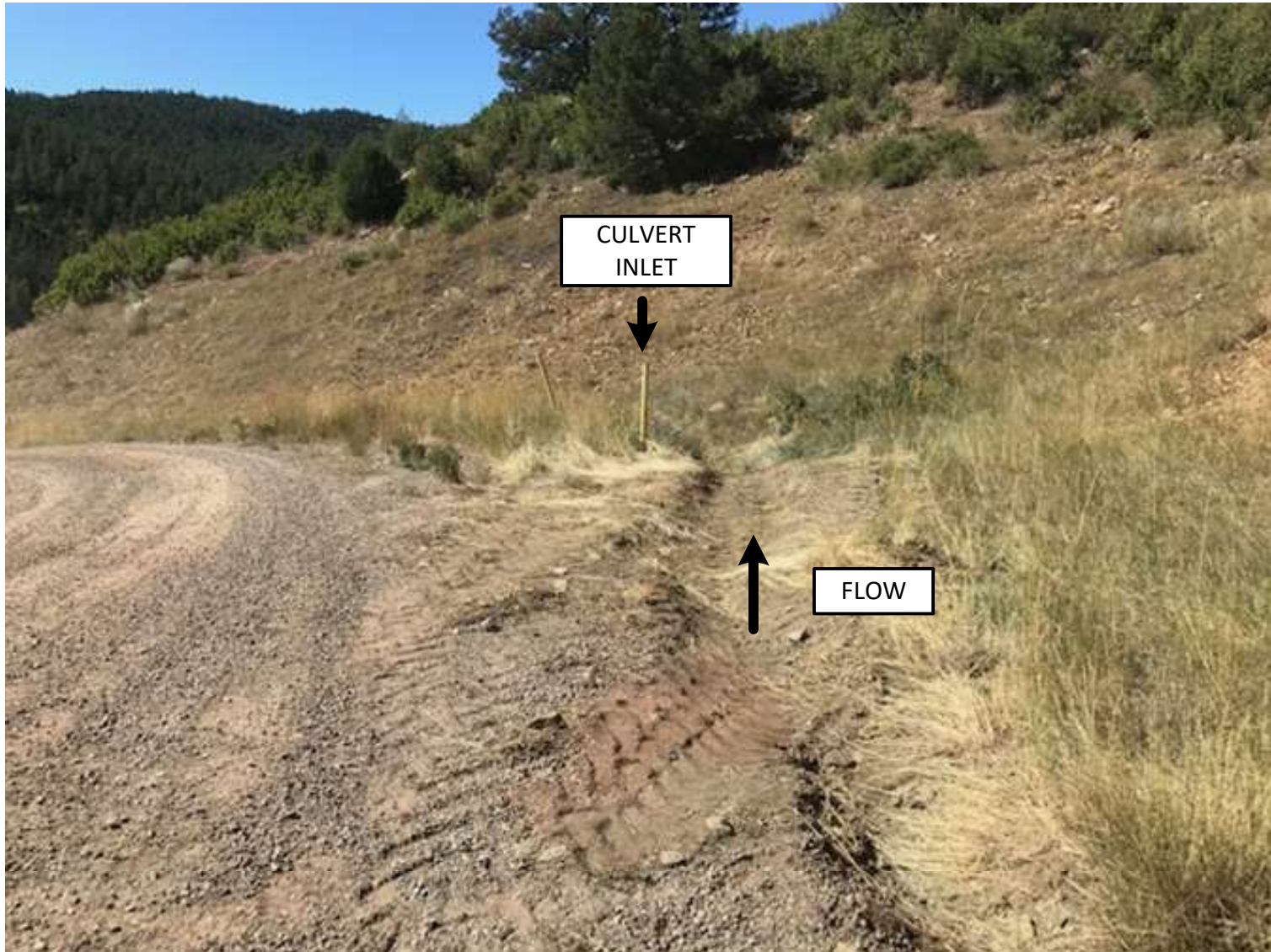


Photo 4: Run off is now directed toward the culvert inlet at the entrance of the well pad.

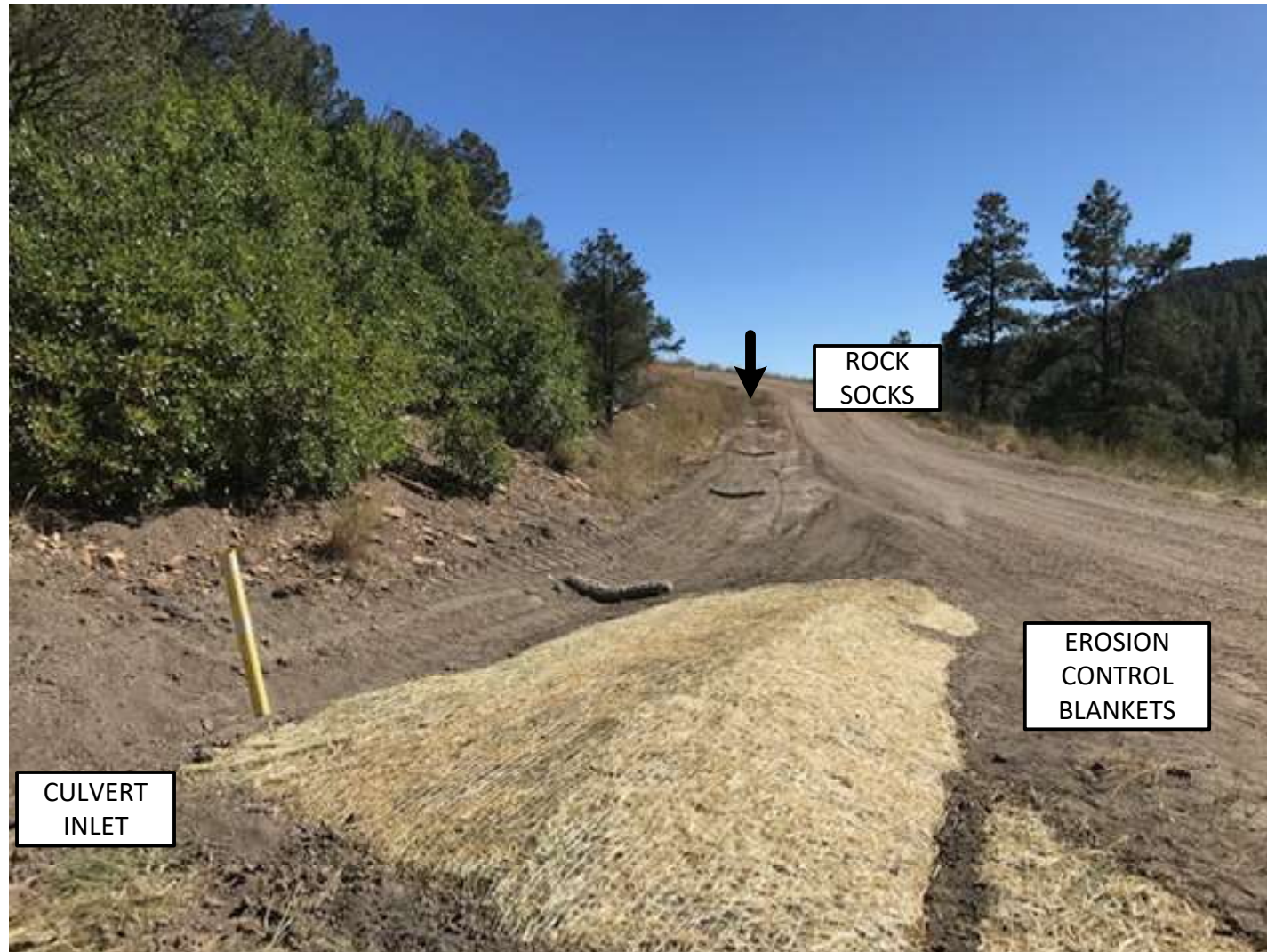


Photo 5: Run off to the culvert along the access road was not diverted to the culvert inlet. The bar ditch was dominated and erosion control blankets were installed where the ground was disturbed for soil stabilization. An approved CPW seed mix was hand broadcast to promote the establishment of vegetation. (4) rock socks were installed in the flow line to filter sediment until vegetation becomes established.