

Conoco Phillips Company, Cline 4-64 2 1H  
005-07212  
Inspection #688305875  
9/26/2019  
Routine Inspection



Colorado Oil and Gas Conservation Commission  
39.73192, -104.50867, 5524.9ft, 283°  
09/26/2019 08:45:45 AM





Colorado Oil and Gas Conservation Commission  
39.73288, -104.50919, 5531.5ft, 259°  
09/26/2019 08:48:05 AM





ConocoPhillips

CLINE 4-64-2-1H

SE/NE SEC. 2 TWP.4S RNG.64W  
ARAPAHOE, CO., COLORADO ELEVATION: 5587'  
ACCESS LOCATION FROM CO. RD 6

24 HR CONOCOPHILLIPS CONTACT: 1-855-595-8255  
LOCAL EMERGENCY SERVICES: 911 NO SMOKING

Colorado Oil and Gas Conservation Commission

39.7328, -104.50882, 5534.8ft, 8

09/26/2019 08:50:40 AM





Colorado Oil and Gas Conservation Commission  
39.73283 -104.50919, 5544.6ft, 248°  
09/26/2019 08:48:14 AM

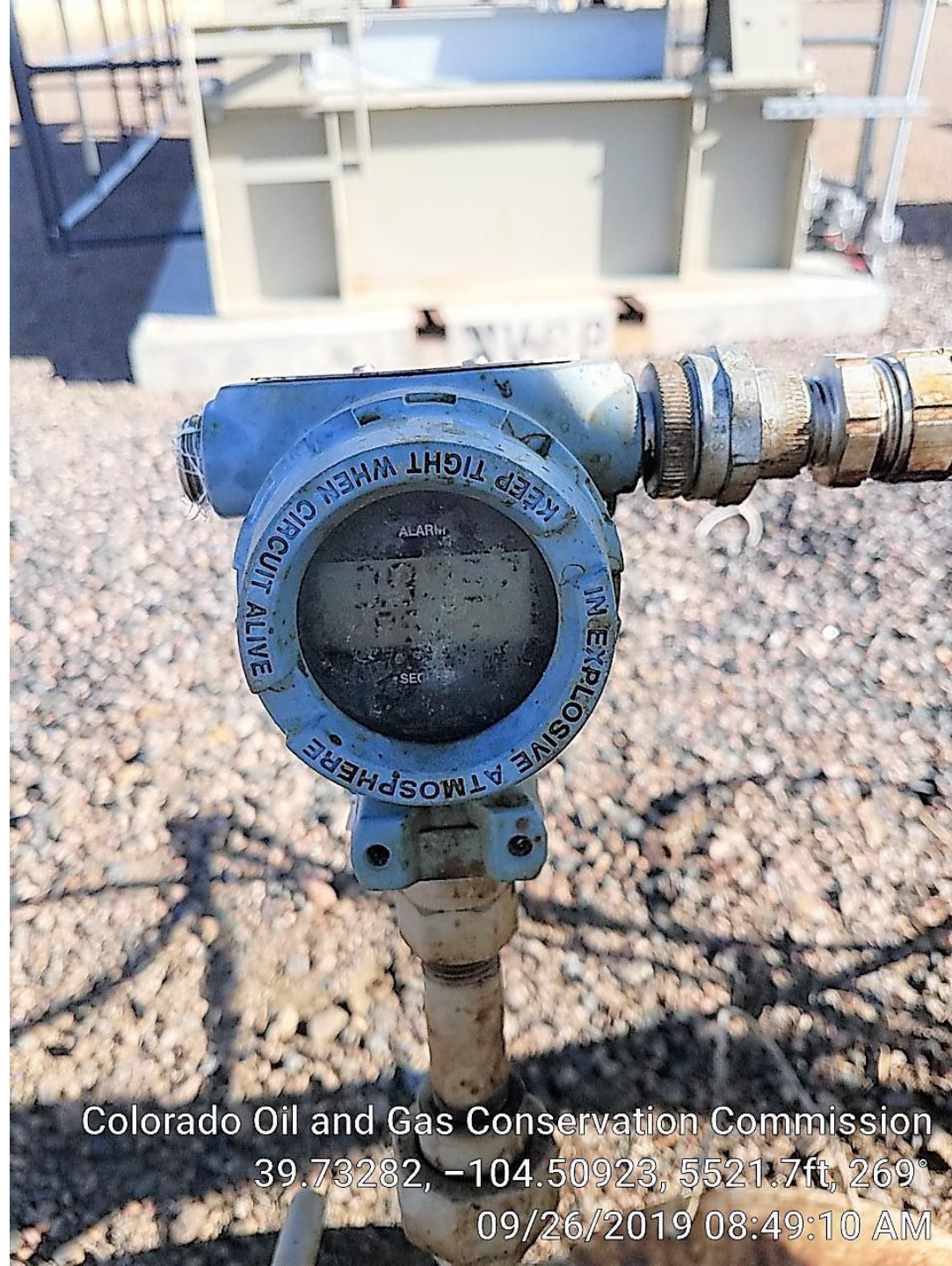




Housekeeping, oil  
on wellhead and  
bradenhead cover,  
maintain.

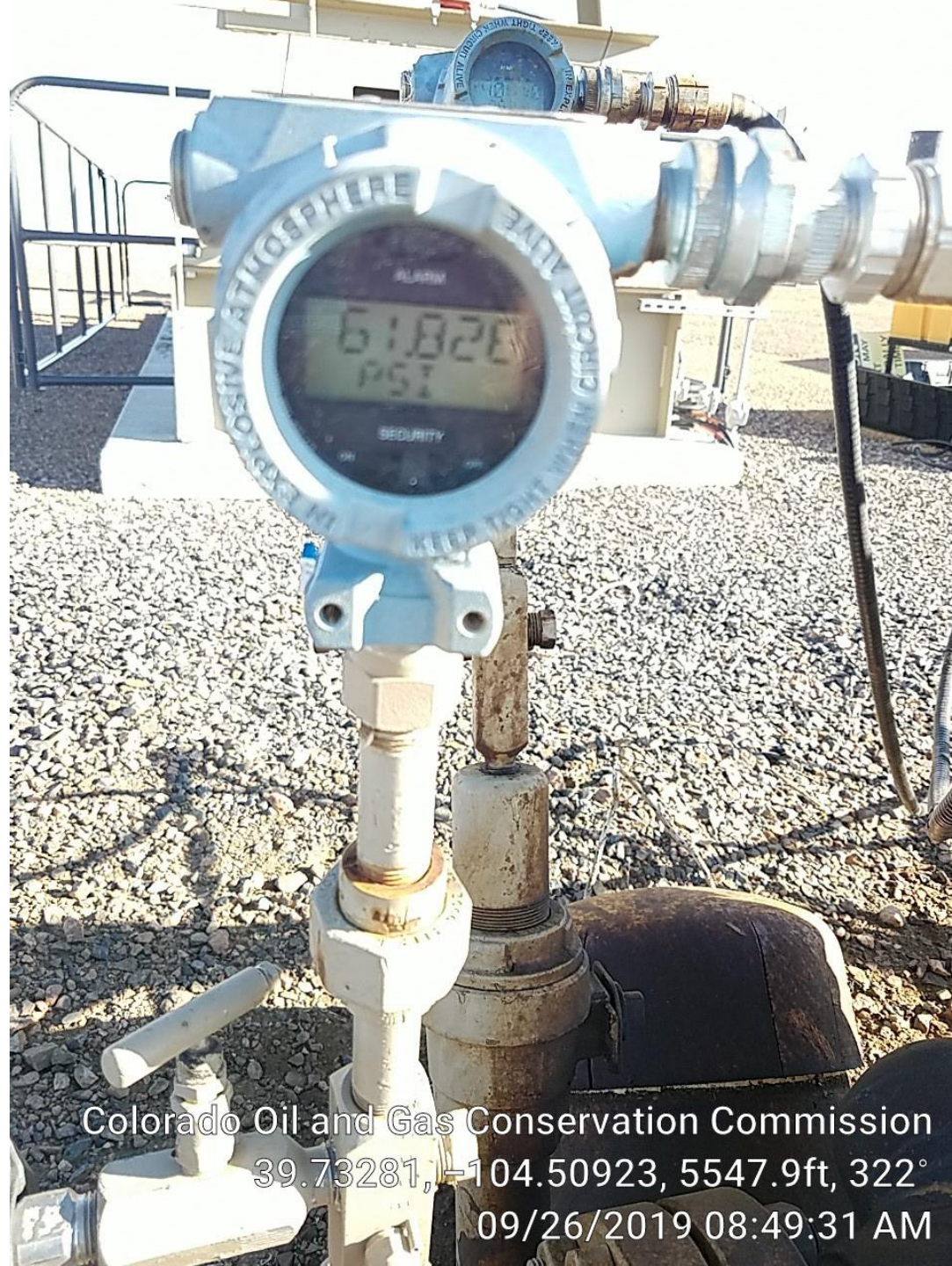
Colorado Oil and Gas Conservation Commission  
39.73282, -104.50924, 5524.9ft, 17°  
09/26/2019 08:48:43 AM





Colorado Oil and Gas Conservation Commission  
39.73282, -104.50923, 5521.7ft, 269°  
09/26/2019 08:49:10 AM





Colorado Oil and Gas Conservation Commission  
39.73281, -104.50923, 5547.9ft, 322°  
09/26/2019 08:49:31 AM





Colorado Oil and Gas Conservation Commission  
39.73281, -104.50922, 5538.1ft, 32°  
09/26/2019 08:49:45 AM





Housekeeping, oil stain on tank from thief hatch, maintain.

Colorado Oil and Gas Conservation Commission  
39.73276, -104.5089, 5534.8ft, 98°  
09/26/2019 08:50:22 AM





Produced water  
tank, connected?

Colorado Oil and Gas Conservation Commission  
39.73283, -104.50869, 5534.8ft, 173°  
09/26/2019 08:50:58 AM





Colorado Oil and Gas Conservation Commission  
39.73304, -104.50878, 5528.2ft, 355°  
09/26/2019 08:51:41 AM





Colorado Oil and Gas Conservation Commission

39.73337, -104.50878, 5551.2ft, 179

09/26/2019 08:52:29 AM





Colorado Oil and Gas Conservation Commission  
39.73335, -104.50875, 5547.9ft, 124  
09/26/2019 08:52:34 AM





Colorado Oil and Gas Conservation Commission  
39.73313, -104.50867, 5554.5ft, 141°  
09/26/2019 08:53:26 AM





**WARNING - GAS PIPELINE**



**BRONCO PIPELINE**  
C O M P A N Y

**CLINE 4-64 2 1H**

**24 HOUR EMERGENCY PHONE: 1-855-595-8258**

**LOCAL ADDRESS: 34501 E. QUINCY AVE, WATKINS, COLORADO 80137**

Colorado Oil and Gas Conservation Commission  
39.73307, -104.50863, 5528 2ft, 82°  
09/26/2019 08:53:44 AM