

Peterson Energy Operating INC, Comanche Farms 31A-2
005-07117

Inspection #688305884

9/26/2019

PA Inspection



COLORADO

**Oil & Gas Conservation
Commission**

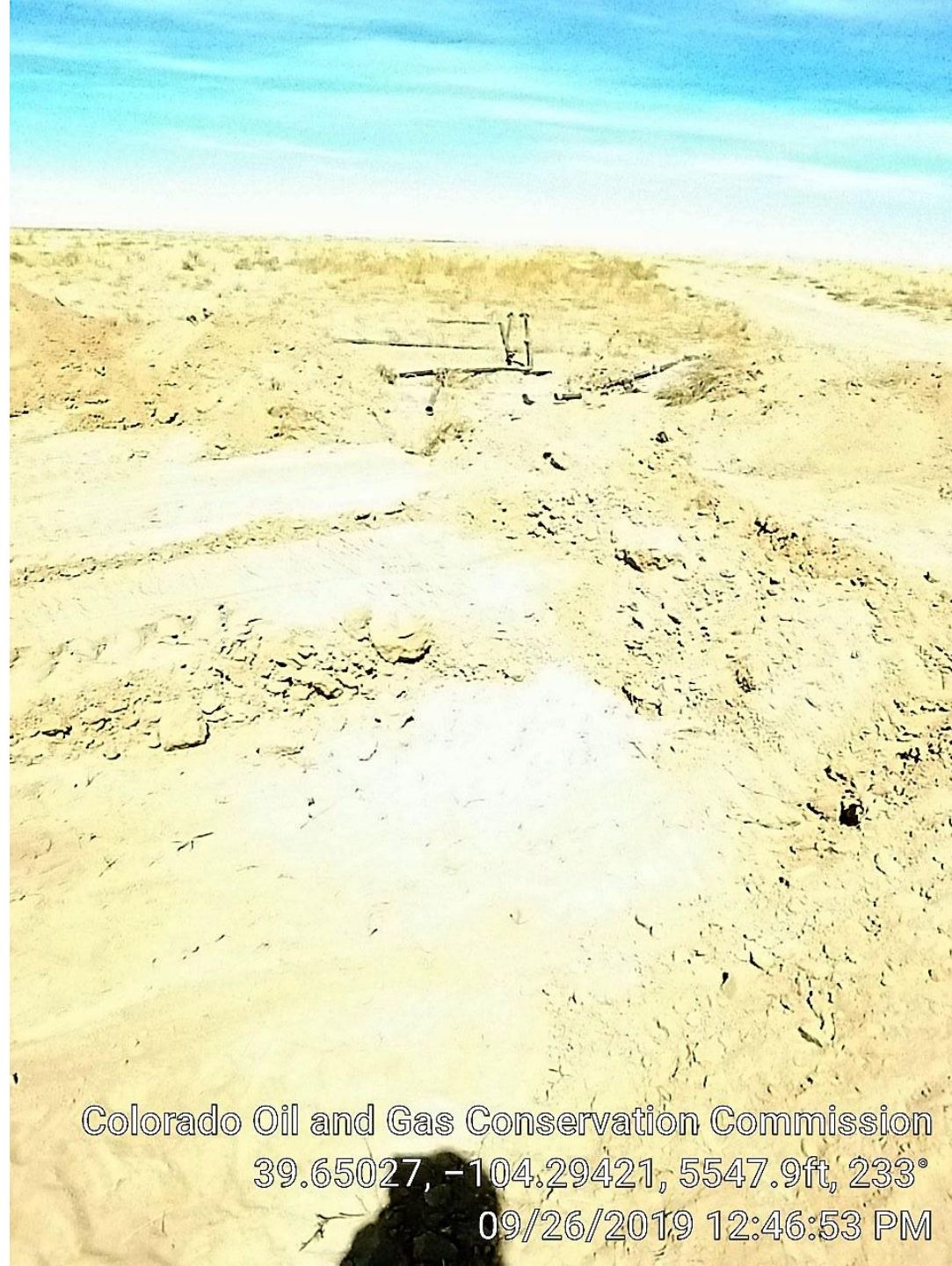
Department of Natural Resources



Colorado Oil and Gas Conservation Commission
39.6502, -104.29415, 5547.9ft, 196°
09/26/2019 12:46:40 PM



Colorado Oil and Gas Conservation Commission
39.65019, -104.29415, 5547.9ft, 231°
09/26/2019 12:46:43 PM



Colorado Oil and Gas Conservation Commission
39.65027, -104.29421, 5547.9ft, 233°
09/26/2019 12:46:53 PM



Colorado Oil and Gas Conservation Commission
39.65024, -104.2942, 5551.2ft, 190°
09/26/2019 12:47:03 PM



Colorado Oil and Gas Conservation Commission
39.65014, -104.29424, 5561.0ft, 191°
09/26/2019 12:47:23 PM