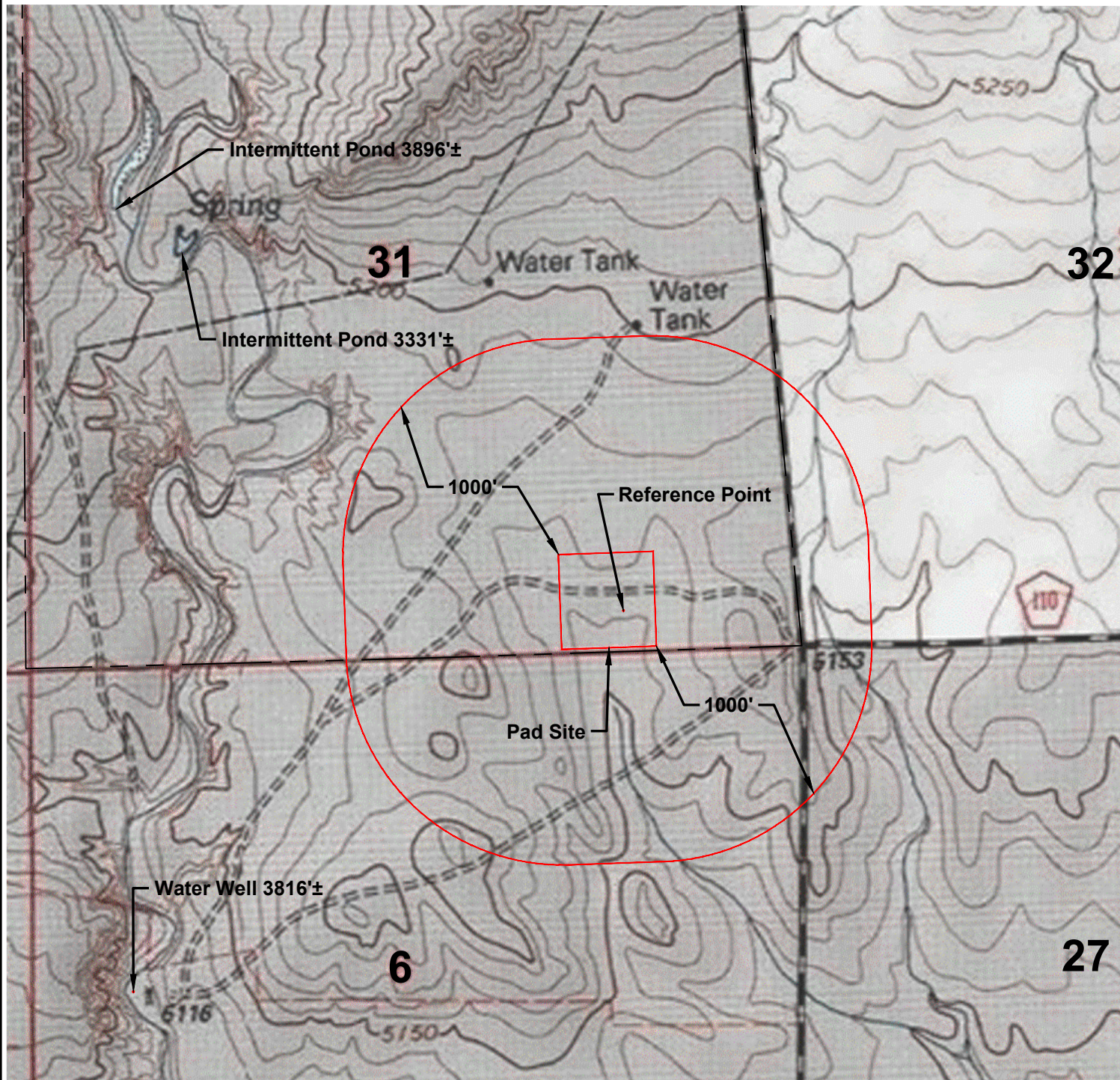


SCALE: 1" = 1000'
0' 500' 1000'

HYDROLOGY MAP

S 1/2 SE 1/4 SECTION 31
T10N R59W 6TH PM
WELD COUNTY, COLORADO



NOTE:
ALL PRODUCTION FACILITIES WILL BE ON PAD

VERDAD RESOURCES TIMBRO 3131 JOB NO. 121076	MAPP	December 13, 2018	REVISION:	
	SHEET :	1 OF 1	INT	DATE
	FILE:	F2A_TIMBRO_3131_HYDRO		

