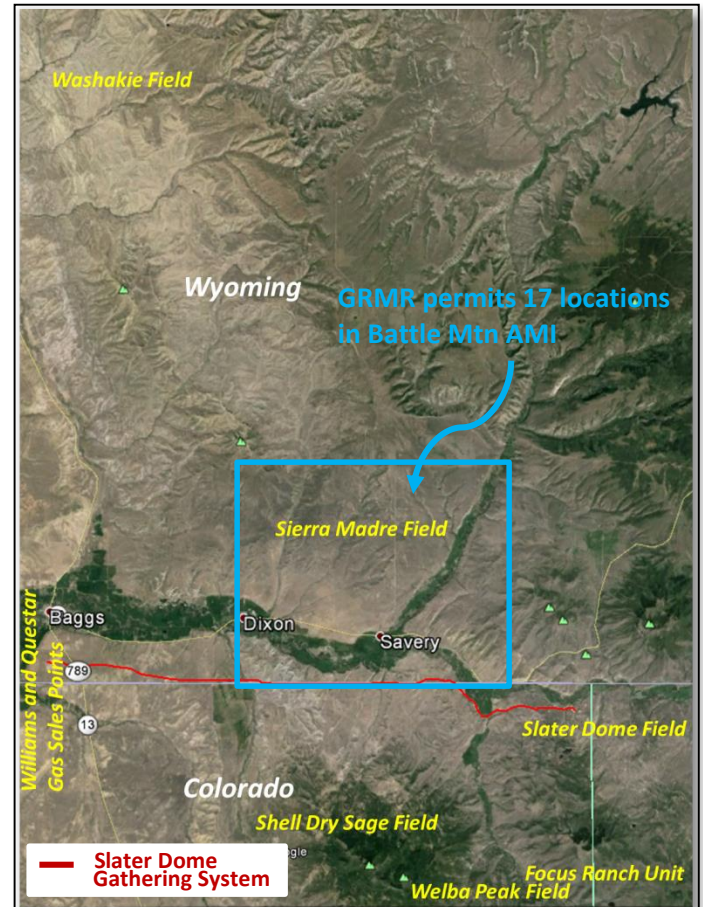


Quick Facts:

- Location: Moffat County, Colorado & Carbon County, WY
- 100% Ownership of Class A and Class B partnership interests & 100% Ownership of the gathering system assets
- Approximately 19 miles of six inch steel pipeline which commences in Slater, Colorado and terminates in Baggs, Wyoming with sales options for Questar and Williams plants allowing for both rich and lean sales options in lieu of additional private processing equipment pre-sales.
- The line runs generally along the Colorado-Wyoming State line and stays south of the Little Snake River.
- Offset Fields: This line services the Slater Dome field directly and is the nearest gathering line for Focus Ranch Niobrara Play, Welba Peak Niobrara Play, Dry Sage Unit (formerly Shell deep gas Niobrara Play), and can easily be connected to the Savery Field, Sierra Madre Field, and the Battle Mountain AMI field to alleviate the use of the existing deteriorating surface line that will soon be under capacity for needed gas movement to Wild Cow. Pipe is purchased and awaiting installation for this connection. PRM has surveyed a line from the Welba Peak field to Slater Dome after a favourable flow test.
- Line Specifications:
 Do(in)6.625 Di(in)6.249 L(mi)18.66
 Operating Pressure 400-1716 psi
 Maximum throughput 20 MMscfd
 Certified pig launcher and receiver
 Inspections and additional certified pigging and pressure testing operations were performed by Kahuna Engineering in 2012
- 2012 Replacement Cost \$6,972,800

Location:



Kim Parsons or Dave Smith
 165 S. Union Blvd Suite 366
 Lakewood, Colorado 80228
kparsons@entekenergy.com
dsmith@entekenergy.com
 303 282-4933 Main

THIS OFFER IS SUBJECT TO UPPER MANAGEMENT APPROVAL, PRIOR SALE OR WITHDRAWAL WITHOUT FURTHER NOTICE AND THE EXECUTION OF ALL NECESSARY CONTRACTS.

The information transmitted contains data estimates and is subject to change. Furthermore, the information transmitted is intended only for the person or entity to which it is addressed and may contain confidential and/or privileged material. Any review, retransmission, dissemination, or other use of or taking any action in **reliance on this information is prohibited.**