

Inspection Photos
Location Name: Waves 1H
Location ID: 430661



Photo 1 – Pumping Unit



Photo 2 – Tank Battery

Inspection Photos
Location Name: Waves 1H
Location ID: 430661



Photo 3 – Tank Battery Sign does not reflect Current Operator



Photo 4 – Sign at Entrance does not reflect current Operator or 24 hour Emergency Contact Info.

Inspection Photos
Location Name: Waves 1H
Location ID: 430661



Photo 5 – Sign at Pumping Unit does not reflect current Operator or 24 hour Emergency Contact Info.



Photo 6 – Stained Soil at the front of the Pumping Unit

Inspection Photos
Location Name: Waves 1H
Location ID: 430661



Photo 7 – Stained Soil at the back of the Pumping Unit



Photo 8 – Stained Soil at the Southeast side of the Pumping Unit

Inspection Photos
Location Name: Waves 1H
Location ID: 430661



Photo 9 – Stained Soil at the back of the Pumping Unit



Photo 10 – Unused Arrow Engine

Inspection Photos
Location Name: Waves 1H
Location ID: 430661

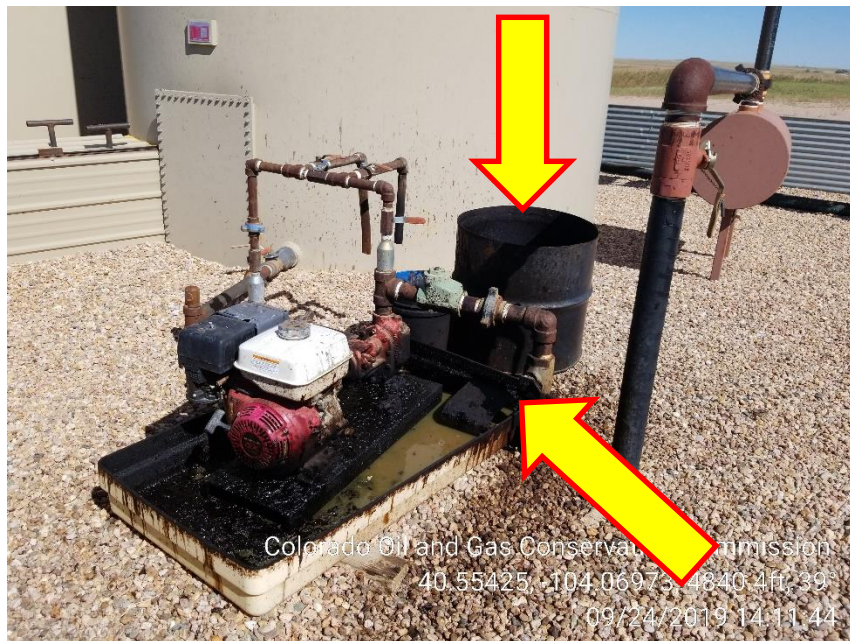


Photo 11 – Stained Soil at dumps inside the Treater Shed



Photo 12 – Trash inside the Berm

Inspection Photos
Location Name: Waves 1H
Location ID: 430661



**Photo 13 – Oily Waste at the Recycle pump inside Tank Berm,
please install Wildlife netting over barrel and secondary
containment**