



Axis Exploration
Project: Weld County, CO (NAD83)
Site: Sec 04-T04S-R65W Jamaso Pad
Well: Jamaso 4-65 5-6-10
Wellbore: Wellbore #1
Design: Wellbore #1 (Jamaso 4-65 5-6-10/Wellbore #1)
Patterson 340

PROJECT DETAILS: Weld County, CO (NAD83)
Geodetic System: US State Plane 1983
Datum: North American Datum 1983
Ellipsoid: GRS 1980
Zone: Colorado Northern Zone
System Datum: Ground Level
Local North: True



WELL DETAILS: Jamaso 4-65 5-6-10

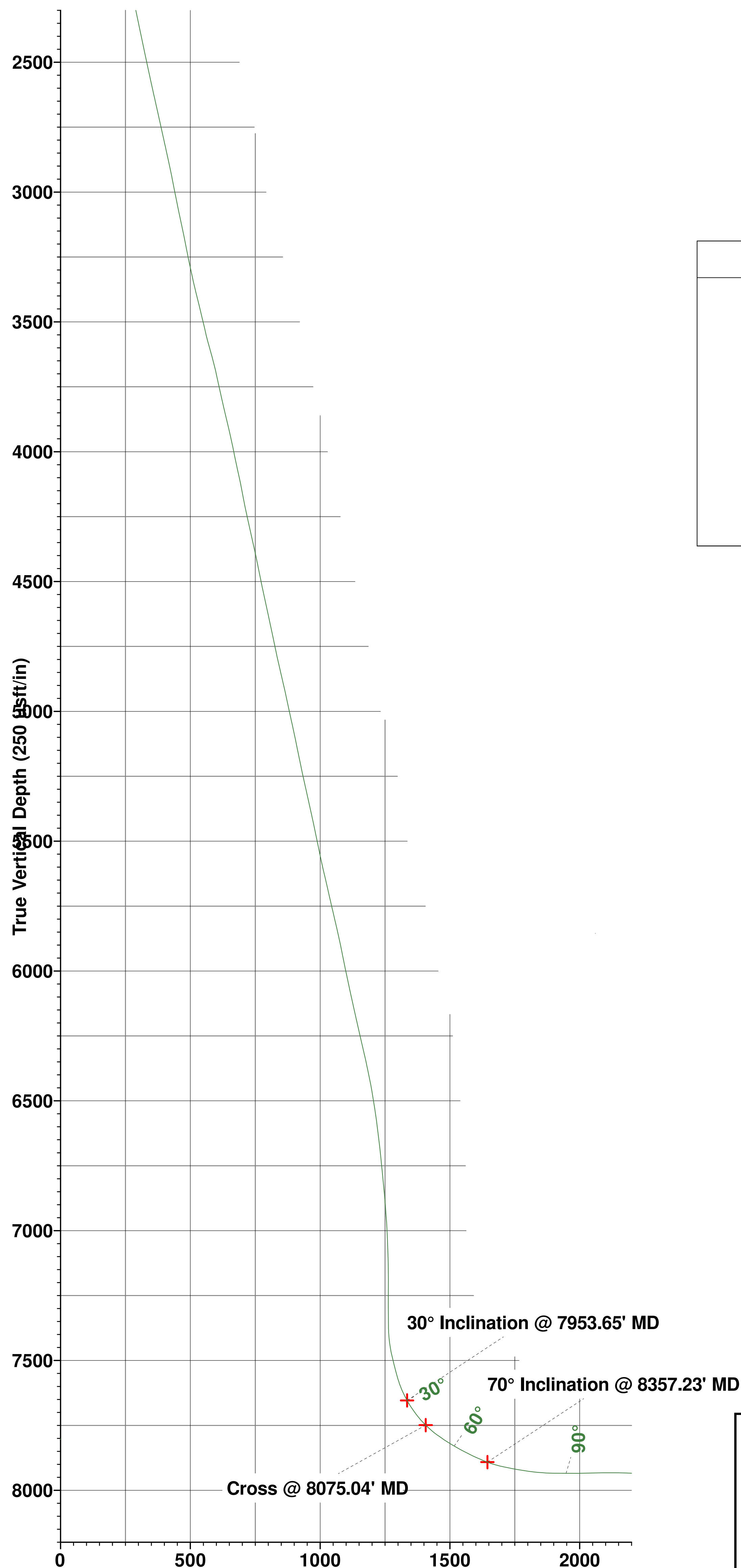
Ground Elevation:: 5591.00
RKB Elevation: KB @ 5616.00usft (Patterson 340)
Rig Name: Patterson 340

Northing	Easting	Latitude	Longitude
1146770.92	3232307.96	39.733281	-104.674002

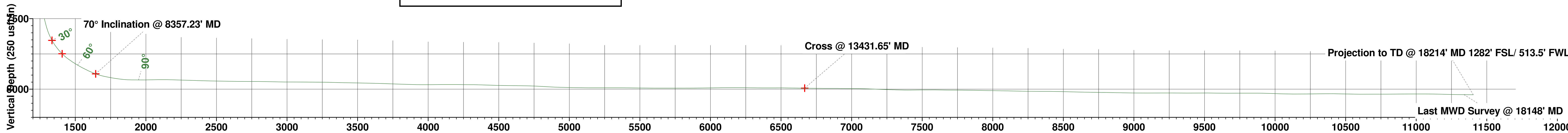
ANNOTATIONS

MD	Inc	Azi	TVD	+N/-S	+E/-W	VSect	Departure	Annotation
2649.00	17.53	215.49	2574.00	-423.17	-294.62	347.80	523.81	Tie into Surface Surveys
2700.00	18.12	217.83	2622.55	-435.68	-303.94	358.69	539.42	First MWD Survey @ 2700' MD
7953.65	30.00	277.68	7653.77	-1546.53	-1141.24	1335.05	1973.92	30° Inclination @ 7953.65' MD
8075.04	46.12	276.60	7749.11	-1536.16	-1215.01	1406.81	2049.68	Cross @ 8075.04' MD
8357.23	70.00	270.64	7891.74	-1525.16	-1456.32	1644.57	2290.37	70° Inclination @ 8357.23' MD
13431.65	89.45	270.68	7992.97	-1521.20	-6524.00	6667.55	7358.77	Cross @ 13431.65' MD
18148.00	89.40	270.31	8039.14	-1502.89	-11239.01	11339.04	12074.50	Last MWD Survey @ 18148' MD
18214.00	89.40	270.31	8039.83	-1502.53	-11305.00	11404.41	12140.50	Projection to TD @ 18214' MD 1282' FSL/ 513.5' FWL

SHL/ 2449' FNL & 1211' FWL
LP/ 1252' FSL & 460' FEL
BHL/ 1277' FSL & 460' FWL
Ground Elevation 5591'



Vertical Section at 262.43° (250 usft/in)



Vertical Section at 262.43° (250 usft/in)

