



Axis Exploration
Project: Weld County, CO (NAD83)
Site: Sec 04-T04S-R65W Jamaso Pad
Well: Jamaso 4-65 5-6-09
Wellbore: Wellbore #1
Design: Wellbore #1 (Jamaso 4-65 5-6-09/Wellbore #1)
Patterson 340

PROJECT DETAILS: Weld County, CO (NAD83)
Geodetic System: US State Plane 1983
Datum: North American Datum 1983
Ellipsoid: GRS 1980
Zone: Colorado Northern Zone
System Datum: Ground Level
Local North: True



WELL DETAILS: Jamaso 4-65 5-6-09

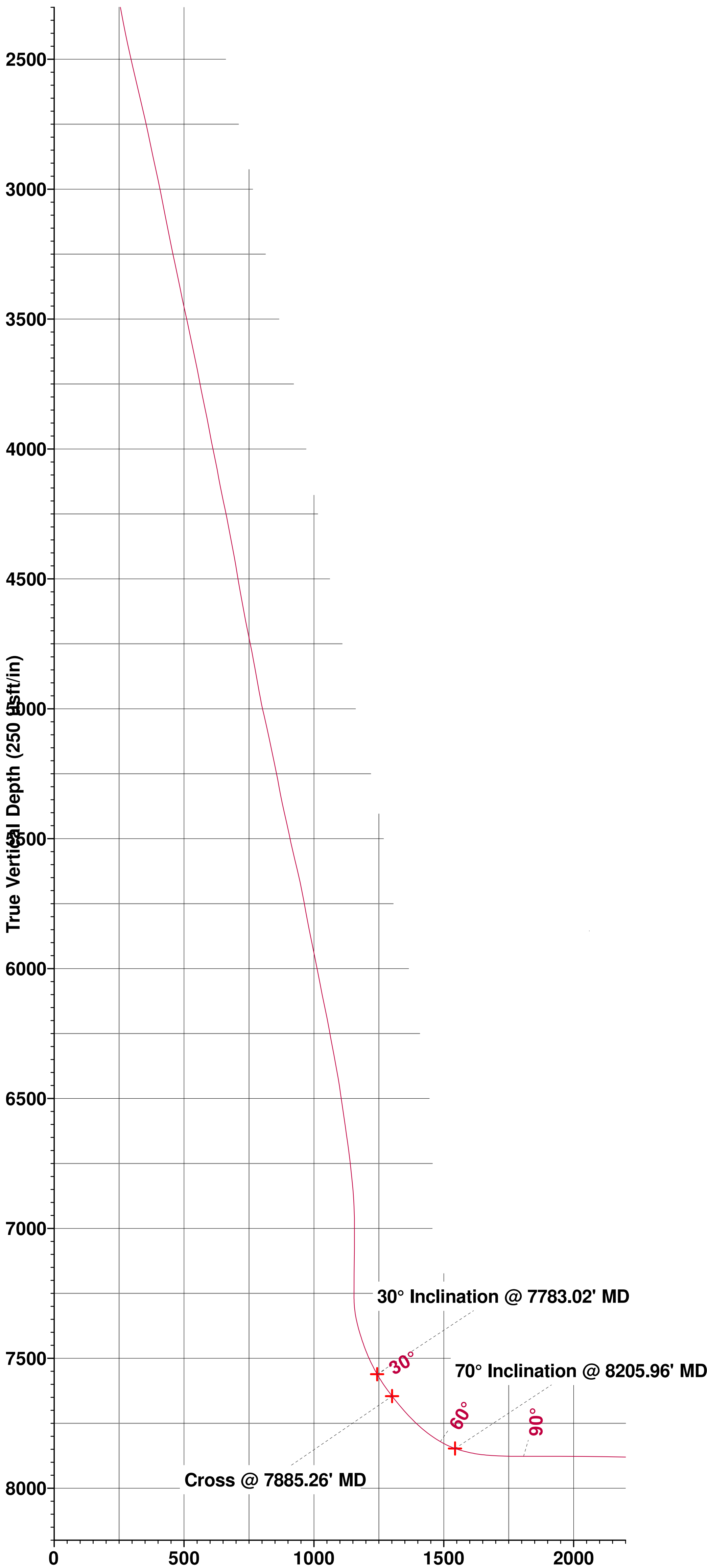
Ground Elevation:: 5591.00
RKB Elevation: KB @ 5616.00usft (Patterson 340)
Rig Name: Patterson 340

Northing	Easting	Latitude	Longitude
1146770.72	3232285.75	39.733281	-104.674081

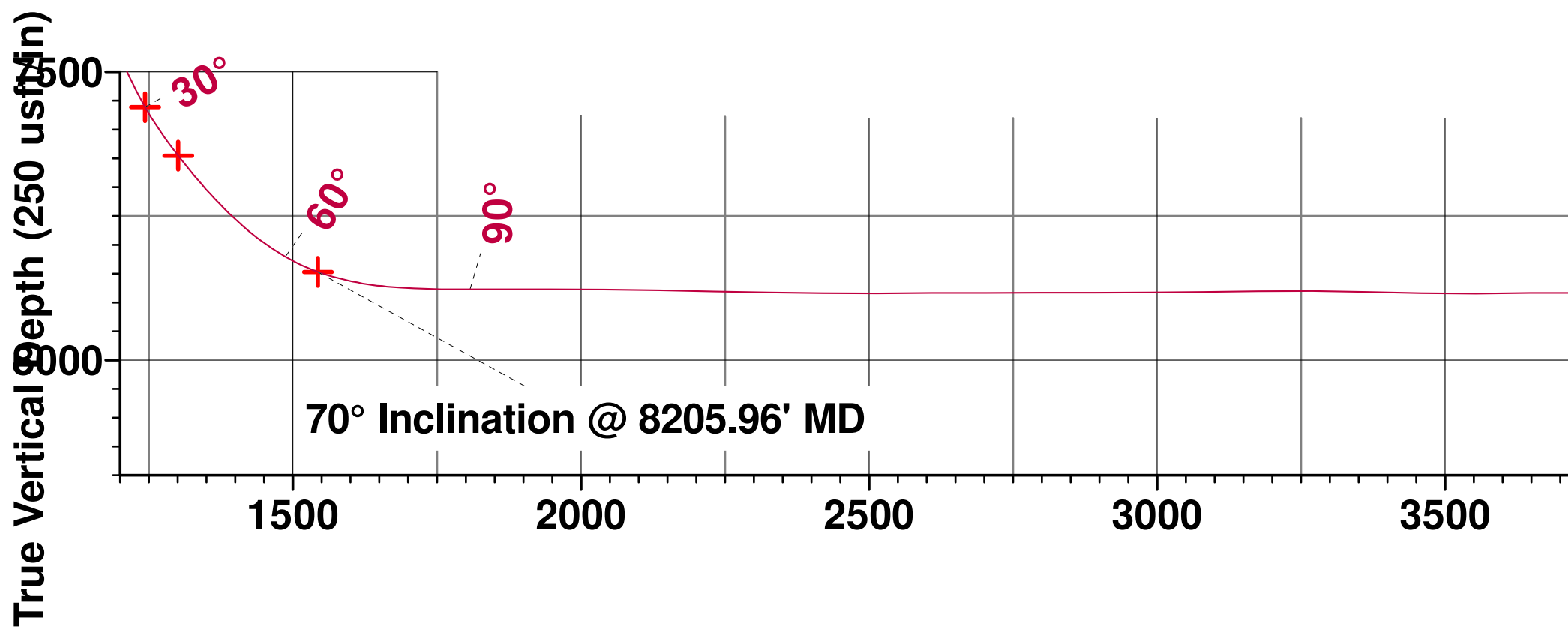
ANNOTATIONS

MD	Inc	Azi	TVD	+N/-S	+E/-W	VSect	Departure	Annotation
2578.00	16.30	227.70	2527.14	-289.85	-274.45	301.90	408.87	Tie into Surface Surveys
2700.00	16.75	226.64	2644.10	-313.44	-299.90	329.56	443.57	First MWD Survey @ 2700' MD
7783.02	30.00	270.81	7561.31	-1156.04	-1134.21	1243.48	1672.16	30° Inclination @ 7783.02' MD
7885.26	37.97	271.39	7645.53	-1154.74	-1192.00	1300.86	1729.45	Cross @ 7885.26' MD
8205.96	70.00	270.98	7847.04	-1151.05	-1436.04	1543.32	1973.86	70° Inclination @ 8205.96' MD
13273.90	88.60	270.44	7928.51	-1143.39	-6499.00	6580.46	7036.90	Cross @ 13273.90' MD
17993.00	90.77	269.69	7981.51	-1126.03	-11216.17	11272.55	11754.79	Last MWD Survey @ 17993' MD
18055.00	90.77	269.69	7980.68	-1126.37	-11278.16	11334.27	11816.79	Projection to TD @ 18055' MD 1657.5' FSL/ 517' FWL

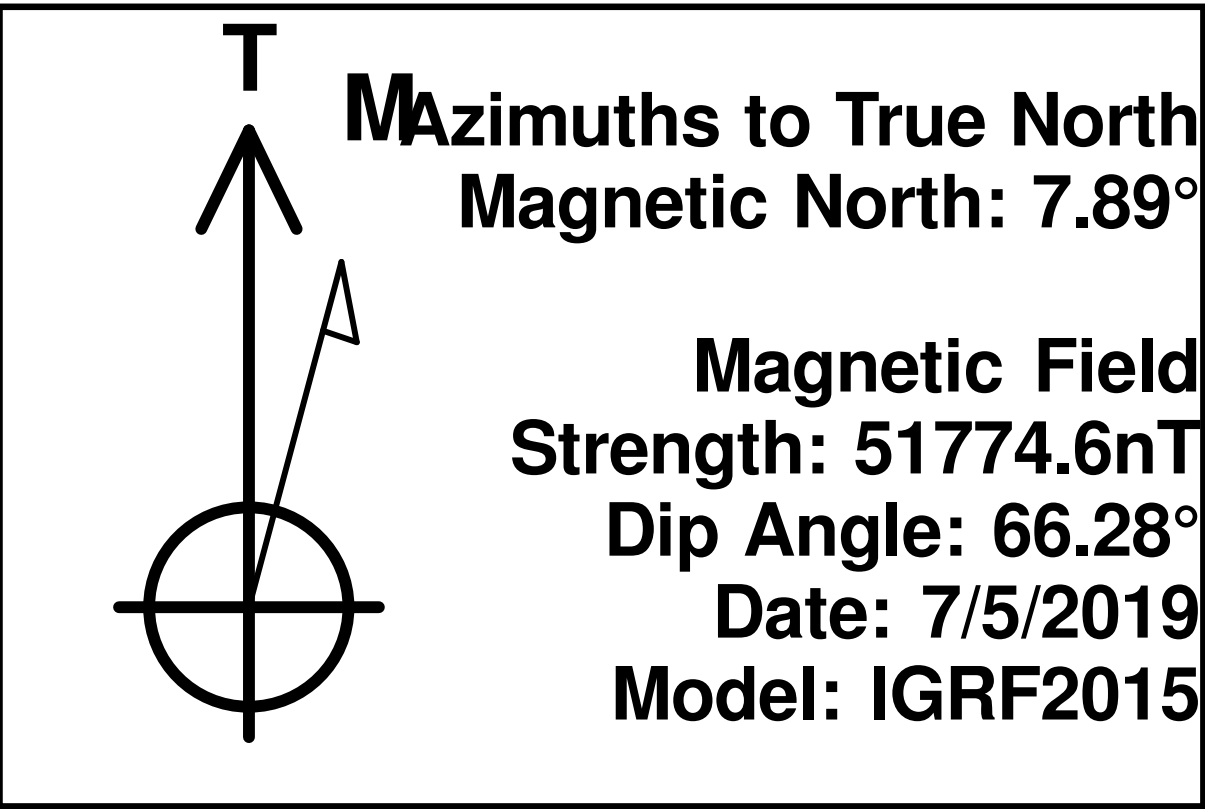
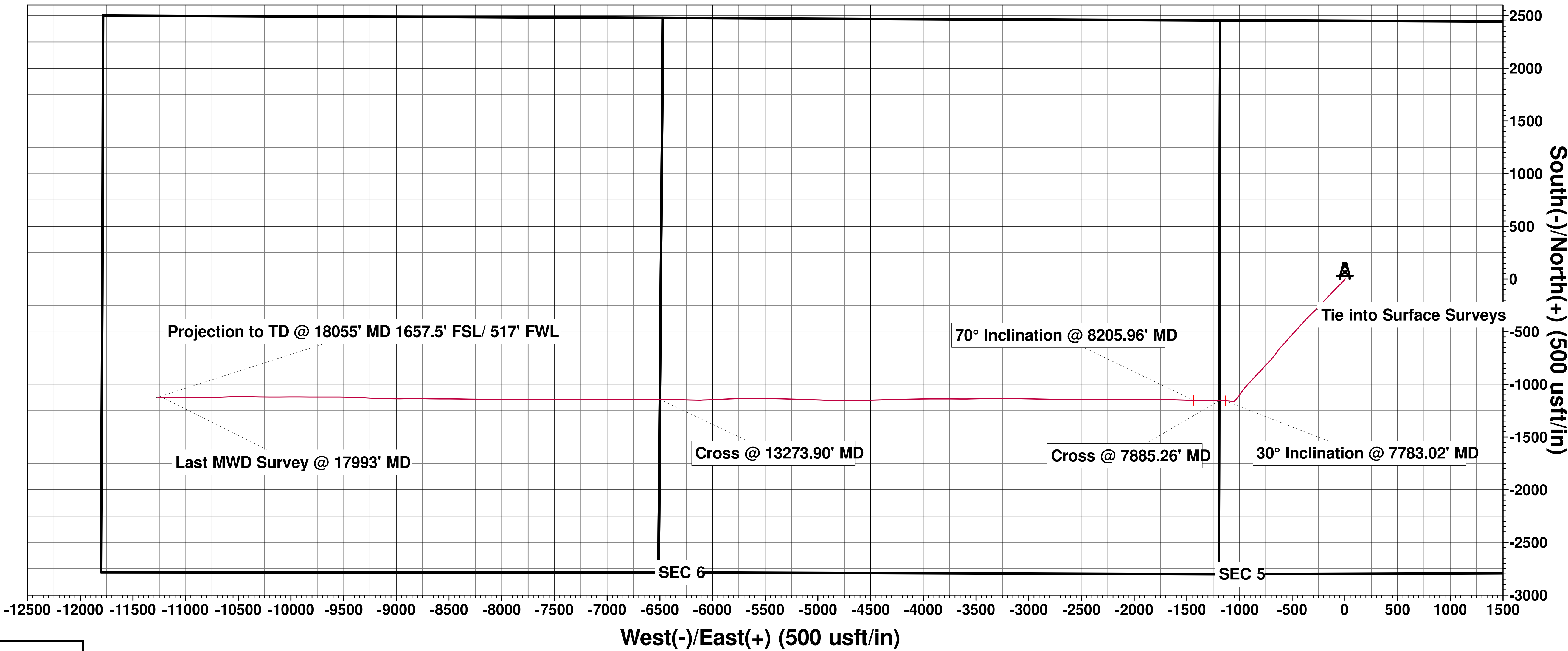
SHL/ 2450' FNL & 1188' FWL
LP/ 1648' FSL & 460' FEL
BHL/ 1673' FSL & 460' FWL
Ground Elevation 5591'



Vertical Section at 264.30° (250 usft/in)



Vertical Section at 264.30° (250 usft/in)



Mazimuths to True North
Magnetic North: 7.89°

Magnetic Field
Strength: 51774.6nT
Dip Angle: 66.28°
Date: 7/5/2019
Model: IGRF2015