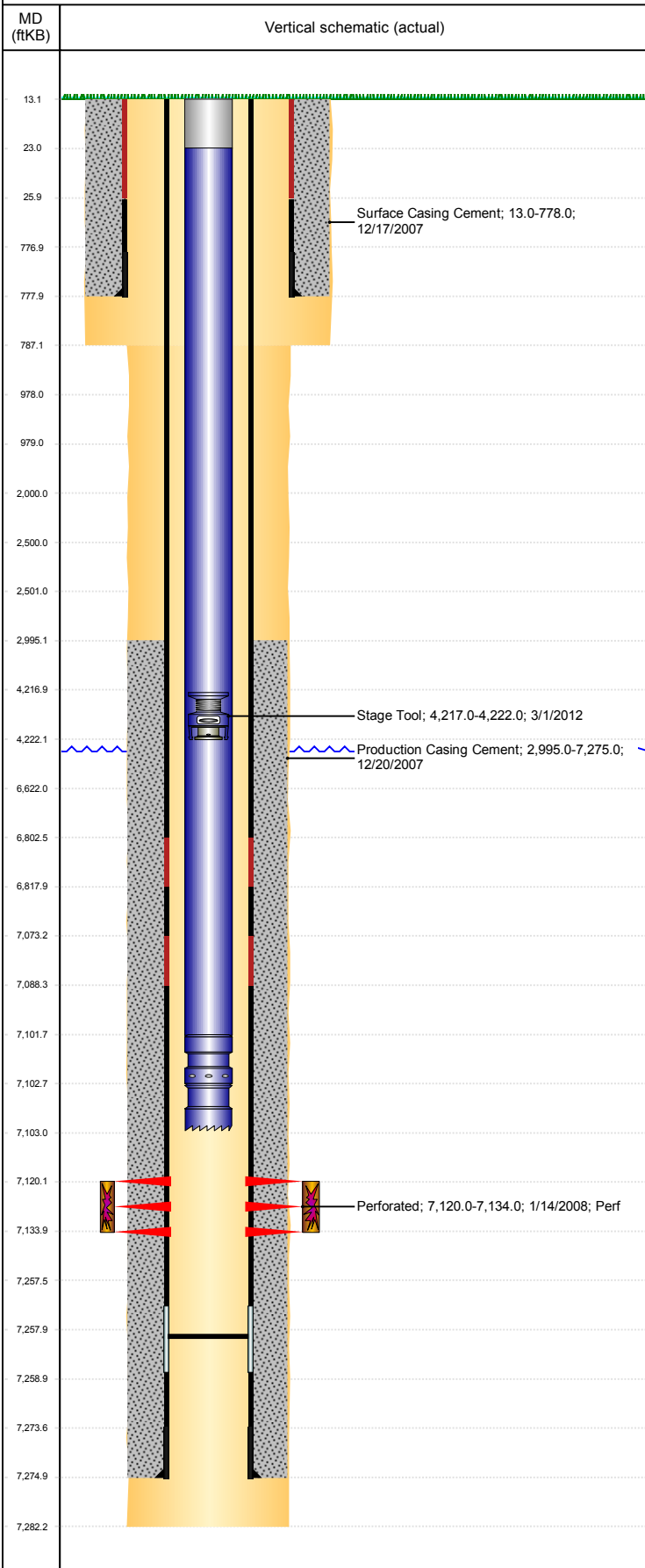


Well Name: BOOTH USX EE25-14

VERTICAL, ORIGINAL HOLE, 3/10/2019 7:20:45 PM



Well Header									
API 05-123-26590		Business Unit DJ BASIN			District 15		Well Config VERTICAL		
KB - GL / MSL (ft... 13.00		Spud Date 12/17/2007		P & A Date		Well Production Status PR			SoRT No
Comment									
Surface Location (Congressional)									
Qtr 3 SE	Qtr 4 SW	Section 25	Twnshp 7	Twnsh... N	Range 65	Rng E/... W	Actual Latitude (°) 40.53894861	Actual Longitude (°) -104.61338397	
Wellbore Sections									
Section Des			Size (in)			Act Top, MD (ftKB)		Act Btm, MD (ftKB)	
Surface			12 1/4			13		787	
Production			7 7/8			787		7,282	
Casing Strings									
Csg Des			Run Date		OD (in)	Wt/Len (lb/ft)	Grade	Top, MD (ftKB)	MD (ftKB)
Surface			12/17/2007		8 5/8	24.00	J-55	13.0	778.0
Production			12/20/2007		4 1/2	11.60	J-55	13.0	7,275.0
Cement									
Des					Start Date		Top (ftKB)		Btm (ftKB)
Surface Casing Cement					12/17/2007		13.0		778.0
Production Casing Cement					12/20/2007		2,995.0		7,275.0
Zone Statuses									
Zone Name	Status Date	Status	Fluid Type	Job				Prod Method	
CODELL	1/18/2012	PR	Water					Flowing	
CODELL	1/19/2015	PR							
Perforation Data									
Linked Zone			Bnch/Stg	Entered Shot Total	Top (ftKB)		Btm (ftKB)		Date
CODELL, ORIGINAL HOLE				56	7,120.00		7,134.00		1/14/2008
Stimulation Intervals									
Zone					Start Date		Top (ftKB)		Btm (ftKB)
CODELL, ORIGINAL HOLE					1/23/2008		7,120.0		7,134.0
Other In Hole									
Run Date		Des				OD (in)	Top (ftKB)		Btm (ftKB)
3/1/2012		Stage Tool				2	4,217.0		4,222.0
Logs									
Date		Type				Top, MD (ftKB)		Btm, MD (ftKB)	
1/11/2008		CBL/CCL/GR				2,850.0		7,220.0	
Plug Back Total Depths									
Date		Type		Com					Depth (ftKB)
12/20/2007		FLOAT COLLAR							7,258.0