



AND GAS CONSERVATION COMMISSION
OF THE STATE OF COLORADO

MAY 22 1972

COLO. OIL & GAS CON. COMM.

APPLICATION FOR PERMIT TO DRILL, DEEPEN, OR PLUG BACK

1a. TYPE OF WORK

DRILL ☒

DEEPEN ☐

PLUG BACK ☐

b. TYPE OF WELL

OIL
WELL ☒

GAS
WELL ☐

OTHER

SINGLE
ZONE ☐

MULTIPLE
ZONE ☐

2. NAME OF OPERATOR

A. T. Skaer et al

3. ADDRESS OF OPERATOR

620 Patterson Building, Denver, Colorado 80202

4. LOCATION OF WELL (Report location clearly and in accordance with any State requirements.)

At surface 600 Ft. from South Line and 1610 Ft. from West Line

At proposed prod. zone Same as Above

14. DISTANCE IN MILES AND DIRECTION FROM NEAREST TOWN OR POST OFFICE

8 Miles NW of Sterling, Colorado

15. DISTANCE FROM PROPOSED

LOCATION TO NEAREST

PROPERTY OR LEASE LINE, FT.

(Also to nearest drlg. line, if any)

600 Ft. ✓

16. NO. OF ACRES IN LEASE

160

18. DISTANCE FROM PROPOSED LOCATION
TO NEAREST WELL, DRILLING, COMPLETED,
OR APPLIED FOR, ON THIS LEASE, FT.

950 Ft. To #2-B

19. PROPOSED DEPTH

4885 Ft.

21. ELEVATIONS (Show whether DF, RT, GR, etc.)

4100 Ft. Gr. - 4110 Ft. KB

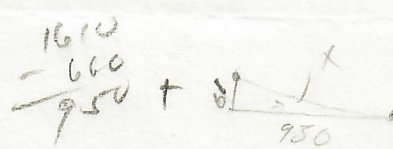
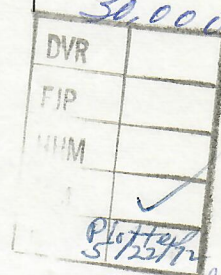
23.

PROPOSED CASING AND CEMENTING PROGRAM

SIZE OF HOLE	SIZE OF CASING	WEIGHT PER FOOT	SETTING DEPTH	QUANTITY OF CEMENT
12-1/4"	8-5/8"	24#	100 Ft.	100 Sax
7-7/8"	14# & 15.5#		4885 Ft.	150 Sax

*Acreage:

NE/4 SW/4 and SE/4 SE/4 of Section 32-9N-53W
S/2 SW/4 of Section 33, 9N, 53W



950² 61²

IN ABOVE SPACE DESCRIBE PROPOSED PROGRAM: If proposal is to deepen or plug back, give data on present productive zone and proposed new productive zone. If proposal is to drill or deepen directionally, give pertinent data on subsurface locations and measured and true vertical depths. Give blowout preventer program, if any.

24.

SIGNED

TITLE

Operator

DATE

5-19-72

(This space for Federal or State office use)

PERMIT NO.

APPROVAL DATE

DIRECTOR

APPROVED BY

TITLE

O & G CON. COMM.

DATE

MAY 22 1972

CONDITIONS OF APPROVAL, IF ANY:

A.P.I. NUMBER

05 075 8338

See Instructions On Reverse Side