

Click here to reset the form

FORM
21
Rev 9/14

State of Colorado
Oil and Gas Conservation Commission



1120 Lincoln Street, Suite 801, Denver, Colorado 80203 (303)-894-2100 Fax: (303)-894-2109

MECHANICAL INTEGRITY TEST

1. Duration of the pressure test must be a minimum of 15 minutes.
2. An original pressure chart must accompany this report if this test was not witnessed by an OGCC representative. Injection wells tests must be witnessed by an OGCC representative.
3. For production wells, test pressures must be at a minimum of 300 psig.
4. New injection wells must be tested to maximum requested injection pressure.
5. For injection wells, test pressures must be at least 300 psig or average injection pressure, whichever is greater.
6. A minimum 300 psi differential pressure must be maintained between the tubing and tubing/casing annulus pressure.
7. Do not use this form if submitting under provisions of Rule 326.a.(1) B. or C.
8. OGCC notification must be provided 10 days prior to the test via Form 42.
9. Packers or bridge plugs, etc., must be set within 100 feet of the perforated interval to be considered a valid test.

OGCC Operator Number: 16700
Name of Operator: Chevron U.S.A. Inc
Address: 100 Chevron Road
City: Rangely State: CO Zip: 81648
API Number: 05-103-06325 OGCC Facility ID Number: 47443 / Rangely Field 72370
Well/Facility Name: M.C. HAGOOD A Well/Facility Number: 8X
Location QtrQtr: NWNW Section: 15 Township: 2N Range: 103W Meridian: 6th

Contact Name and Telephone

Anita Sanford

No: (970) 675-3842

Email: atlx@chevron.com

FOR OGCC USE ONLY

Document Number:

Date Received:

Complete the
Attachment Checklist

Oper OGCC

Pressure Chart	✓	
Cement Bond Log		
Tracer Survey		
Temperature Survey		
Inspection Number	✓	

☐ SHUT-IN PRODUCTION WELL

☒ INJECTION WELL

Last MIT Date: 04/13/2015

Test Type:

☐ Test to Maintain SI/TA status

☒ 5-year UIC

☐ Reset Packer

☐ Verification of Repairs

☐ Annual UIC Test

Describe Repairs or Other Well Activities:

Wellbore Data at Time of Test

Injection/Producing Zone(s)

Weber

Perforated Interval:

6625-6863

Open Hole Interval:

Casing Test

Use when perforations or open hole is isolated by bridge plug or cement plug; use if cased-hole only with plug back total depth.

Bridge Plug or Cement Plug Depth

Tubing Casing/Annulus Test

Tubing Size:

2 7/8'

Tubing Depth:

6700

Top Packer Depth:

6416

Multiple Packers?

☒ Yes ☐ No

Test Data

Test Date

09/26/2019

Well Status During Test

INJECTING

Casing Pressure Before Test

122.5

Initial Tubing Pressure

1778

Final Tubing Pressure

1778

Casing Pressure Start Test

122.5

Casing Pressure - 5 Min.

122.5

Casing Pressure - 10 Min.

122.5

Casing Pressure Final Test

122.5

Pressure Loss or Gain During Test

0

Test Witnessed by State Representative?

☒ Yes

☐ No

OGCC Field Representative (Print Name):

Chuck Browning

I hereby certify that the statements made in this form are, to the best of my knowledge, true, correct, and complete.

Print Name: Anita Sanford

Form 42# 402181540

Field Inspection #

693801134

Signed:

Anita Sanford

Title: Regulatory Tech. Assistant

Date: 09/26/2019

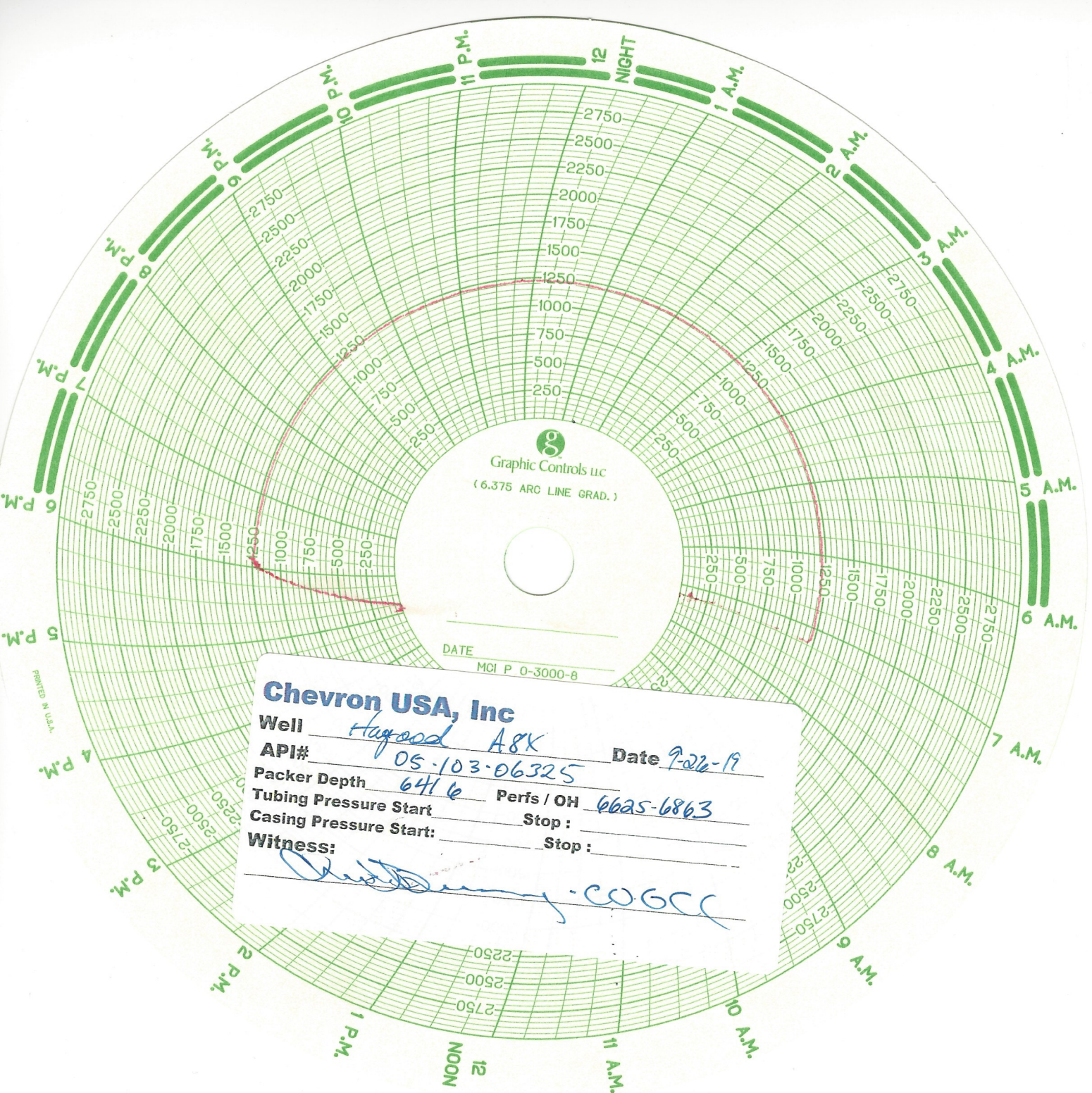
OGCC Approval:

Chuck Browning

Title: N.W INSPECTOR

Date: 09/26/2019

Conditions of Approval, if any:



Chevron USA, Inc

Well Hagood A8K Date 9-22-19

API# 05-103-06325

Packer Depth 6416 Perfs / OH 6625-6863

Tubing Pressure Start _____ Stop: _____

Casing Pressure Start: _____ Stop: _____

Witness: [Signature] COGCC

PRINTED IN U.S.A.