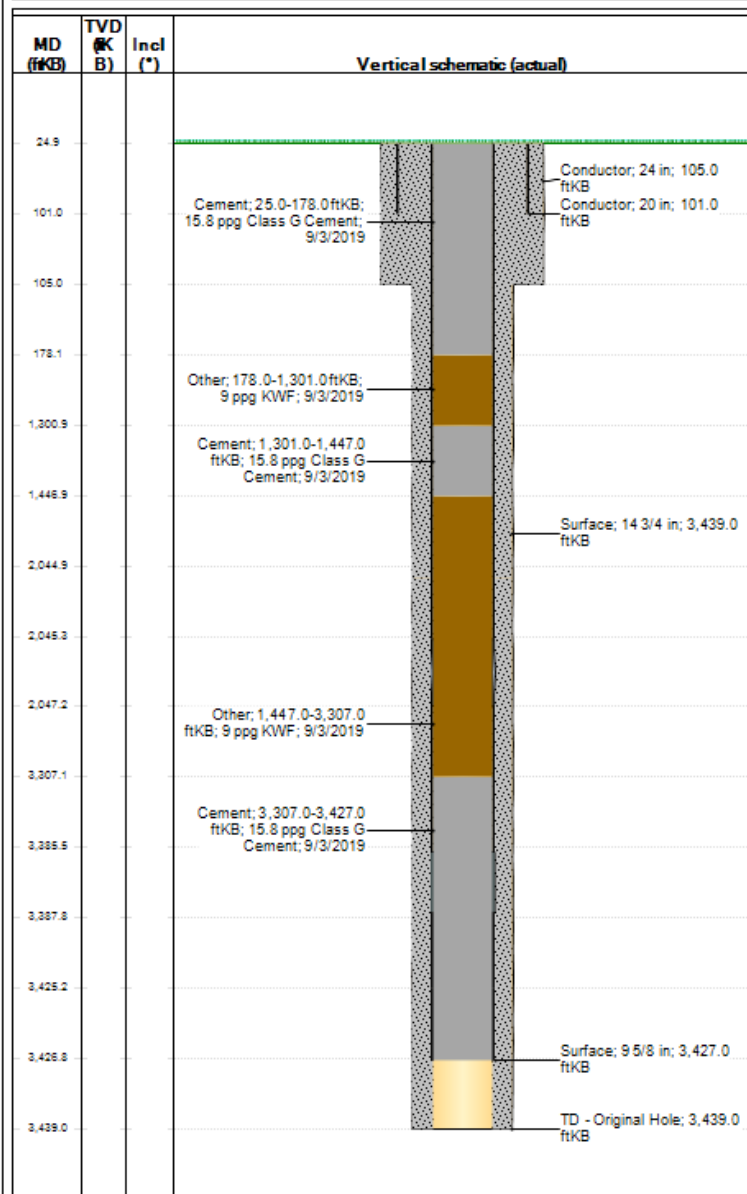




## Downhole Well Profile - with Schematic

Well Name: YCF 32-12-1

API/UWI 05103112000000	SAP Cost Center ID 1711311001	Permit Number	State/Province Colorado	County Rio Blanco
Surface Location T01N-R98W-S32	Spud Date 10/18/2008 00:00	Original KB Elevation (ft) 6,809.00	Gr Elev (ft) 6,784.00	KB-Ground Distance (ft) 25.00
Surface Casing Flange Elevation ...				



Wellbores				
Wellbore Name		Parent Wellbore		Wellbore API/UWI
Original Hole		Profile Type		Kick Off Depth (MD) (ftKB)
Start Depth (ftKB)				
Section Des	Size (in)	Act Top (ftKB)	Act Btm (ftKB)	
Conductor	24	25.0	105.0	
Surface	14 3/4	105.0	3,439.0	
Casing Strings				
Csg Des	Set Depth (ftKB)	OD (in)	Wt/Len (lb/ft)	Grade
Conductor	101.0	20	94.00	J-55
Surface	3,427.0	9 5/8	36.00	J-55
Cement				
Des	Type		String	
Conductor Cement	Casing		Conductor, 101.0ftKB	
Surface Casing Cement	Casing		Surface, 3,427.0ftKB	
Other In Hole				
Run Date	Des	OD (in)	Top (ftKB)	Btm (ftKB)
9/3/2019	Cement	8.921	3,307.0	3,427.0
9/3/2019	Other	8.921	1,447.0	3,307.0
9/3/2019	Cement	8.921	1,301.0	1,447.0
9/3/2019	Other	8.921	178.0	1,301.0
9/3/2019	Cement	8.921	25.0	178.0