



**Adriane Gifford**  
Project Manager

**Upstream EM**  
Environmental Management Company  
1500 Louisiana Street  
Room 38108  
Houston, Texas 77002  
Tel 832-854-5620  
agifford@chevron.com

September 27, 2019

Mr. Alex Fischer  
Environmental Supervisor, Western Colorado  
Colorado Oil and Gas Conservation Commission  
1120 Lincoln Street, Suite 801  
Denver, Colorado 80203

**Re: Wilson Creek Unit Onsite Landfarm – Cell 1 Closure Workplan  
12 miles north of Meeker, Rio Blanco County, Colorado  
Centralized EP Waste Management Facility ID: 149002**

Dear Mr. Fischer:

Chevron Environmental Management Company (CEMC) submits to the Colorado Oil and Gas Conservation Commission (COGCC) the enclosed *Cell 1 Closure Workplan* for the Wilson Creek Unit Onsite Landfarm in Rio Blanco County, Colorado. The work plan was prepared by Stantec Consulting Services Inc. (Stantec), on behalf of CEMC, to outline the proposed closure activities associated with Cell 1, the lined portion of the Landfarm. Cell 1 Closure activities are anticipated to begin on October 7, 2019, pending weather conditions and resource availability.

Should you have any questions regarding this submittal, please contact me at (832) 854-5620 or Brent Lucyk of Stantec at (517) 749-9405.

Respectfully,  
**Chevron Environmental Management Company**  
**on behalf of Chevron U.S.A. Inc.**

A handwritten signature in blue ink, appearing to read "Adriane Gifford".

Adriane Gifford  
Project Manager

Enclosure

cc: Chris Patterson – Chevron  
Brent Lucyk – Stantec



**Stantec Consulting Services Inc.**  
2000 South Colorado Blvd. Suite 2-300, Denver CO 80222

September 27, 2019  
File: 182603883

**Attention: Mr. Alex Fischer**  
Colorado Oil and Gas Conservation Commission  
Department of Natural Resources  
1120 Lincoln Street, Suite 801  
Denver, Colorado 80203

**Reference: Wilson Creek Unit Onsite Landfarm – Cell 1 Closure Workplan, 12 Miles North of Meeker, Rio Blanco County, Colorado Centralized EP Waste Management Facility ID: 149002**

Dear Mr. Fischer,

Stantec Consulting Services Inc. (Stantec), on behalf of Chevron Environmental Management Company (CEMC), is submitting to the Colorado Oil and Gas Conservation Commission (COGCC) this closure workplan for the Wilson Creek Cell 1 Landfarm located at 7265 Rio Blanco County Road #9 in Meeker, Rio Blanco County, Colorado (Site).

## Background

Chevron USA, Inc. (Chevron) currently operates the Onsite Landfarm to treat Exploration and Production (E&P) Wastes generated from operations at the Site. The Landfarm is permitted for operation by the COGCC (Facility ID 149002) as a Centralized E&P Waste Management Facility under COGCC Rule 908. The Landfarm is approximately 0.8 acres in size and is segregated into two cells: Cell 1, the lined portion, is 0.2 acres in size and Cell 2, the unlined portion, is 0.6 acres in size (**Figure 1**).

The purpose of this workplan is to describe the activities to close Cell 1. Based on analytical data collected from Cell 1, arsenic concentrations in soil are above Colorado Department of Public Health and Environment (CDPHE) state background levels of 11 mg/kg and treatment through landfarming technology is ineffective for this constituent. Due to the high arsenic concentrations in Cell 1, Chevron has decided to close Cell 1 through excavation and offsite disposal. This workplan describes the soil excavation, liner disposal, and confirmation sampling proposed to close Cell 1.

## Excavation Activities

Soils will be removed from Cell 1 through the following procedures:

1. All soils will be excavated to the extent of the synthetic liner and directly loaded into trucks for transportation to the Rio Blanco County Landfill for disposal.



September 27, 2019

Mr.

Page 2 of 4

**Reference: Wilson Creek Unit Onsite Landfarm – Cell 1 Closure Workplan, 12 Miles North of Meeker, Rio Blanco County, Colorado Centralized EP Waste Management Facility ID: 149002**

2. The synthetic liner will be removed and transported to the Rio Blanco County Landfill for disposal.
3. Soils beneath the liner will be screened using visual observation and a photoionization detector (PID) to verify hydrocarbon impacted soil does not extend beneath the liner. If impacts are observed beneath the liner, additional soil will be excavated to the observed limits of hydrocarbon impacts.
4. Following soil excavation and liner removal, up two confirmation soil samples will be collected as follows:
  - a. One sample will be collected beneath the liner's low point to verify no leakage of the E&P waste.
  - b. If damage to the liner was observed during removal, one sample will be collected beneath the liner where the damage was observed.
5. Confirmation soil samples will be submitted for analysis for all Table 910-1 Contaminates of Concern.
6. Following receipt of soil samples less than Table 910-1 Concentration Levels, the excavation will be backfilled to the existing grades at the Site using berm materials or purchased backfill. It is anticipated that final topography and revegetation will occur following future Cell 2 closure activities.
7. If the fence surrounding Cell 1 is required to be removed during excavation activities, it will be replaced to the original condition until Cell 2 soils have been remediated and final closure of the Centralized E&P Waste Management Facility has been approved.

## Field Documentation

The excavation limits and confirmation soil sample location(s) will be documented using a survey grade global positioning system (GPS) and field notes. Waste manifests generated from the disposal of soils from Cell 1 will be collected and submitted with the final documentation report.

## Reporting

Closure activities including excavation and sampling of Cell 1 will be documented in the final documentation report and submitted via eForm 27. The final documentation report will include:



September 27, 2019

Mr.

Page 3 of 4

**Reference: Wilson Creek Unit Onsite Landfarm – Cell 1 Closure Workplan, 12 Miles North of Meeker, Rio Blanco County, Colorado Centralized EP Waste Management Facility ID: 149002**

- A written project summary;
- Excavation details (location, dimensions, and volume);
- Final compliance soil sample analytical results with mapped location(s); and
- Soil disposal information (waste manifest documentation).

## Project Schedule

It is anticipated that Cell 1 closure activities will start on or around October 7, 2019 and last approximately one week. The schedule is contingent upon weather related conditions (e.g. heavy rains, thunderstorms, and freezing conditions) and resource availability.

Should you have any questions, please contact Adriane Gifford with CEMC at 832-854-5620 (agifford@chevron.com) or Brent Lucyk at 517-749-9405 (brent.lucyk@stantec.com).

Regards,

Stantec Consulting Services Inc.

---

Brent Lucyk  
Senior Geologist  
Phone: (517) 749-9405  
Brent.lucyk@stantec.com

---

Savanah Whitaker  
Engineer in Training  
Phone: (517) 515-8488  
Savanah.whitaker@stantec.com

---

Christopher Beall, PG  
Associate Geologist  
Phone: (303) 285-4541  
Christopher.beal@stantec.com



September 27, 2019

Mr.

Page 4 of 4

**Reference: Wilson Creek Unit Onsite Landfarm – Cell 1 Closure Workplan, 12 Miles North of Meeker, Rio Blanco County, Colorado Centralized EP Waste Management Facility ID: 149002**

Attachments:

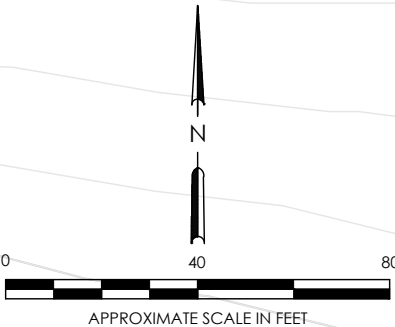
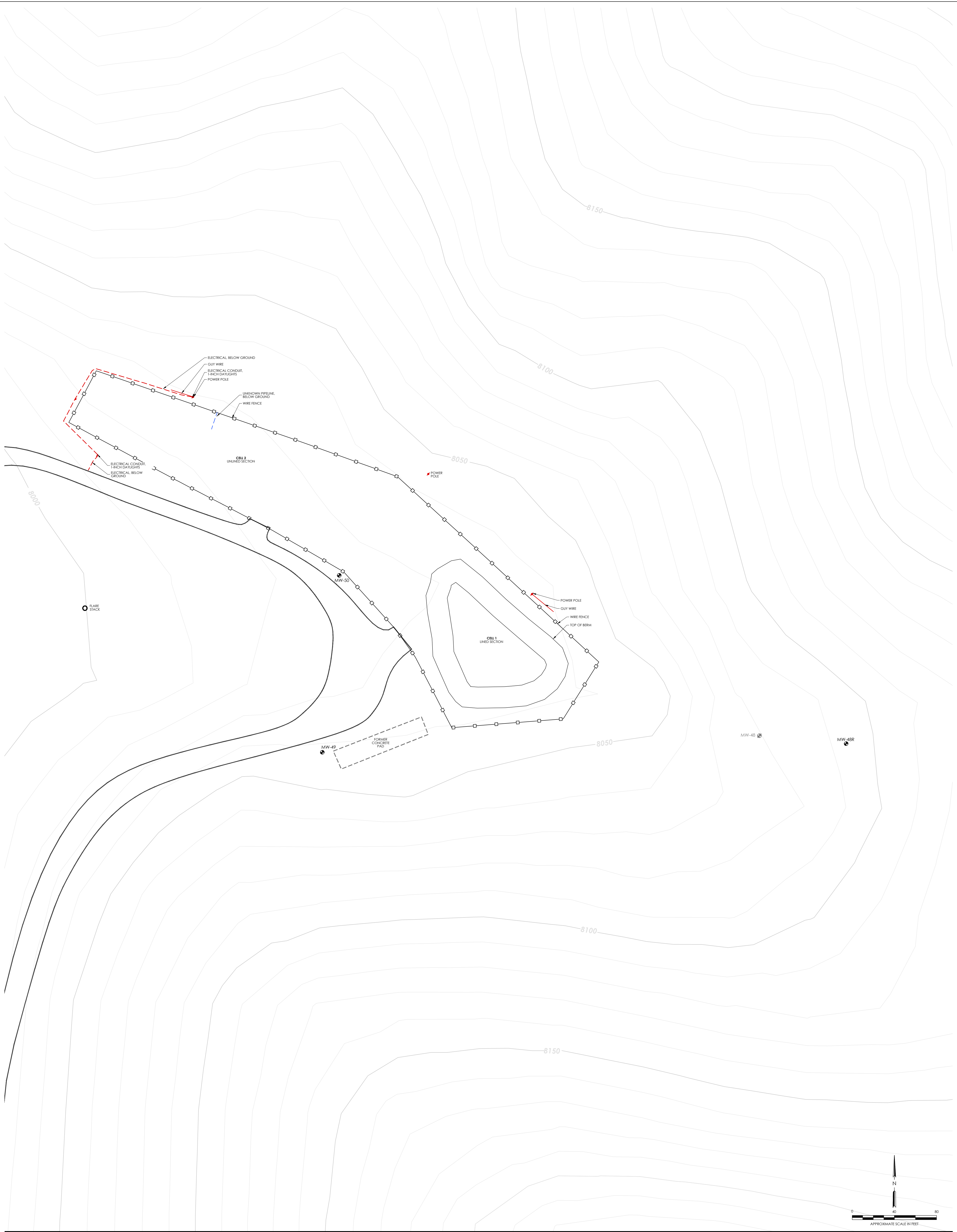
Figure 1 – Onsite Landfarm

c. Project File

Adriane Gifford, CEMC

Chris Patterson, Chevron





**Notes**  
1. Coordinate System: NAD 1983 State Plane Colorado North FIPS 5001 Feet.  
2. Base features produced by Chevron, US Census Bureau, and USGS.  
3. This figure was created using a Digit Globe Satellite Image, 2017 and Google Earth Images, 2014.  
The Contractor shall verify and be responsible for all dimensions. DO NOT scale the drawing - any errors or omissions shall be reported to Stantec without delay.  
The Copyrights to all designs and drawings are the property of Stantec. Reproduction or use for any purpose other than that authorized by Stantec is forbidden.

- Legend**
- GROUND SURFACE CONTOURS (10' INTERVAL; ABOVE MEAN SEA LEVEL)
  - FENCE LINE
  - TOP OF BERM
  - ELECTRICAL LINE (BELOW GRADE)
  - UNKNOWN PIPELINE LINE (BELOW GRADE)
  - ABANDONED MONITORING WELL
  - MONITORING WELL



Project Location:  
7265 Rio Blanco County Road 6  
Meeker, CO

Prepared by JRO on 2018-12-12  
Technical Review by CB on 2018-12-12  
Independent Reviewed by BL on 2018-12-12  
203720900

Client/Project  
Chevron Environmental Management Company  
Wilson Creek Documentation Report

Figure No.  
**1**

Title  
**Onsite Landfarm**