

HALLIBURTON

iCem® Service

CONOCO/PHILLIPS COMPANY-EBUS

For: Jason Beach

Date: Sunday, January 06, 2019

Lussing Trust 4-64 19-20 4C1H

Job Date: Sunday, January 06, 2019

Sincerely,

Nick Cummins

Legal Notice

Disclaimer:

All information in this report is provided subject to the terms and conditions which govern the services provided by Halliburton. Halliburton personnel use their best efforts in gathering information and their best judgment in interpreting it, but any interpretation, research, analysis or recommendation furnished by Halliburton are opinions based upon inferences from measurements and empirical relationships and assumptions, which inferences and empirical relationships and assumptions are not infallible, and with respect to which professionals in the industry may differ. iCem 3D Displacement results are used to understand how fluids intermix during a cement job. Simulation and 3D displacement results are not intended as and should not be used as a replacement for bond logs in determining top of cement. Current 3D model calculations are known to model more volume than the input volume for standard cases due to known calculation improvements required. For rotational cases, the modeled volume will be impacted by the same calculations impacting the standard cases, as well as additional constraints imposed to make the calculation time required operationally feasible. Therefore, until further notice, 3D displacement results should not be used for replacement of a bond log, or used as an identifier of top of cement. HALLIBURTON IS UNABLE TO GUARANTEE THE ACCURACY OF ANY CHART INTERPRETATION, RESEARCH ANALYSIS, OR JOB RECOMMENDATION and any interpretation or recommendation is not for use of or reliance upon by any third party. The customer has full responsibility for any of its decisions which are based on the information provided in this report.

Table of Contents

Real-Time Job Summary	
Job Event Log	
Attachments	
Cement Job With Events.png	
Cement Job Without Events.png	
Custom Graphs	
Custom Graph	

1.0 Real-Time Job Summary

1.1 Job Event Log

Type	Seq. No.	Activity	Graph Label	Date	Time	Source	DS Pump Press (psi)	DH Density (ppg)	Comb Pump Rate (bbl/min)	PS Pmp Stg Tot (bbl)	Comments
Event	1	Call Out	Call Out	1/5/2019	19:30:00	USER					CREW CALLED OUT AT 19:30, REQUESTED ON LOCATION 01:30. CREW PICKED UP PLUG CONTAINER FROM FT. LUPTON, CO. BULK 660 10991603 AND PUMP 11189145.
Event	2	Depart Yard Safety Meeting	Depart Yard Safety Meeting	1/6/2019	00:20:00	USER					CREW DISCUSSED ROUTES, HAZARDS, AND COMMUNICATION WITH CREW.
Event	3	Crew Leave Shop	Crew Leave Shop	1/6/2019	00:30:00	USER					STARTED JOURNEY MANAGEMENT.
Event	4	Arrive at Location from Service Center	Arrive at Location from Service Center	1/6/2019	01:30:00	USER					END JOURNEY MANAGEMENT. MEET WITH CO. MAN TO DISCUSS JOB; CONDUCTOR 125' 65#, SURFACE CASING 2,191.2 36# J-55, 13.5" HOLE, TD 2,208', 44.5' SHOE TRAC. MUD 9.1 PPG, PUMP FRESH WATER DISPLACEMENT.
Event	5	Pre-Rig Up Safety Meeting	Pre-Rig Up Safety Meeting	1/6/2019	07:00:00	USER					HAZARD HUNT. DISCUSSED POSSIBLE HAZARDS ASSOCIATED WITH LOCATION, RIG UP, AND WEATHER.

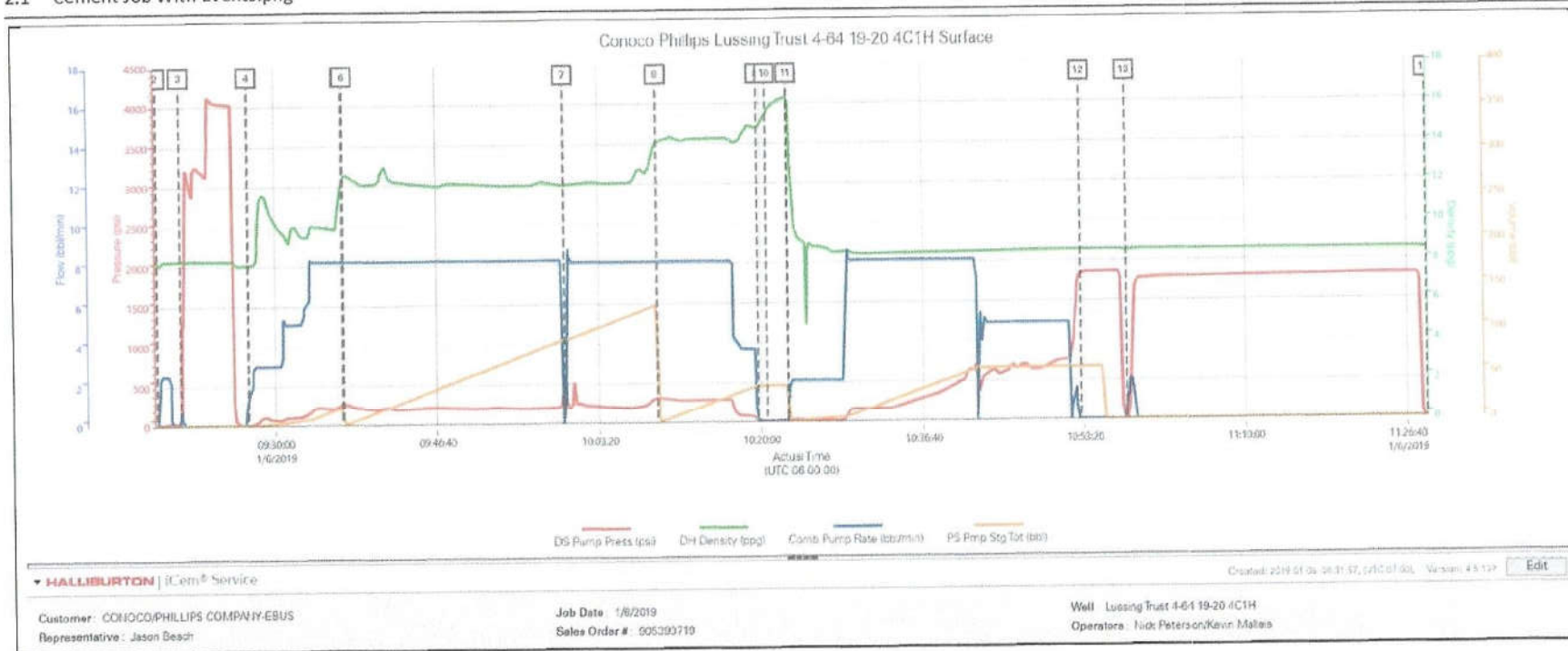
Event	6	Rig-Up Equipment	Rig-Up Equipment	1/6/2019	07:40:00	USER					RIG UP BULK AND MIXING EQUIPMENT.
Event	7	Pre-Job Safety Meeting	Pre-Job Safety Meeting	1/6/2019	08:40:00	USER	617.00	8.04	13.70	41.10	MEETING WITH HALLIBURTON AND RIG PERSONNEL COMMUNICATED POTENTIAL SAFETY HAZARDS AND JOB DETAILS.
Event	8	Start Job	Start Job	1/6/2019	09:05:55	COM4	6.00	8.05	0.00	0.00	STARTED RECORDING DATA FROM ELITE 11189145.
Event	9	Other	Fill Lines	1/6/2019	09:17:56	COM4	1.00	8.22	0.00	0.00	WE FILLED LINES WITH 3 BBLS OF FRESH WATER. AT 2.5 BPM PRESSURE WAS AT 58 PSI.
Event	10	Test Lines	Test Lines	1/6/2019	09:20:19	COM4	20.00	8.22	0.00	0.00	WE PRESSURE TESTED ALL HES LINES TO 3,000 PSI. THE PRESSURE TEST PASSED.
Event	11	Pump Spacer 1	Pump Spacer 1	1/6/2019	09:27:13	COM4	2.00	8.01	1.70	0.10	WE PUMPED 50 BBLS OF SPACER, AT 8 BPM PRESSURE WAS AT 230 PSI. 10 PPG 8.82 YIELD 60.40 GAL/SK WE USED PRESSURIZED SCALES TO VERIFY DENSITY.
Event	12	Drop Bottom Plug	Drop Bottom Plug	1/6/2019	09:36:53	COM4	278.00	12.22	8.20	20.60	COMPANY MAN WITNESSED PLUG DROP.
Event	13	Pump Lead Cement	Pump Lead Cement	1/6/2019	09:37:01	COM4	283.00	12.43	8.20	0.00	WE PUMPED 227 BBLS(495 SKS) OF LEAD CEMENT AT 8 BPM. PRESSURE WAS AT 230 PSI. 12 PPG 2.57 YIELD 15.14 GAL/SK. WE USED PRESSURIZED SCALES TO VERIFY DENSITY.
Event	14	Other	Bumped Bottom Plug	1/6/2019	09:59:45	USER	458.00	11.97	0.00	93.90	WE BUMPED THE BOTTOM PLUG.

Event	15	Pump Tail Cement	Pump Tail Cement	1/6/2019	10:09:19	COM4	328.00	14.06	8.10	132.40	WE PUMPED 72 BBLs(255 SKS) OF TAIL CEMENT AT 8 BPM. PRESSURE WAS AT 322 PSI. 14.2 PPG 1.56 YIELD 7.90 GAL/SK. WE USED PRESSURIZED SCALES TO VERIFY DENSITY.
Event	16	Shutdown	Shutdown	1/6/2019	10:19:41	COM4	24.00	14.68	0.00	41.30	SHUTDOWN TO DROP TOP PLUG.
Event	17	Drop Top Plug	Drop Top Plug	1/6/2019	10:20:35	COM4	5.00	15.56	0.00	41.30	COMPANY MAN WITNESSED TOP PLUG DROP.
Event	18	Pump Displacement	Pump Displacement	1/6/2019	10:22:47	COM4	4.00	16.30	0.00	0.00	WE PUMPED THE CALCULATED DISPLACEMENT OF 166 BBLs. AT 8 BPM AND ADJUSTED RATE AS NEEDED.
Event	19	Bump Plug	Bump Plug	1/6/2019	10:52:59	COM4	1849.00	8.56	0.00	60.00	WE BUMPED THE PLUG. FINAL CIRCULATING PRESSURE WAS 750 PSI. WE PRESSURED UP 500 OVER BEFORE SHUTTING DOWN. WE HELD PRESSURE FOR 5 MINS BEFORE BLEEDING PRESSURE OFF THE WELL. WHEN WE DID WE GOT 1 BBL BACK.
Event	20	Other	Casing Test	1/6/2019	10:57:46	COM4	8.00	8.48	0.00	0.00	WE PRESSURED BACK UP TO 1,800 PSI AND HELD PRESSURE ON IT FOR 30 MINS. AFTER THE 30 MINUTES WE BLED PRESSURE BACK OFF AND GOT 1 BBL BACK.
Event	21	End Job	End Job	1/6/2019	11:28:41	COM4	2.00	8.49	0.00	0.00	CEMENT JOB COMPLETE.

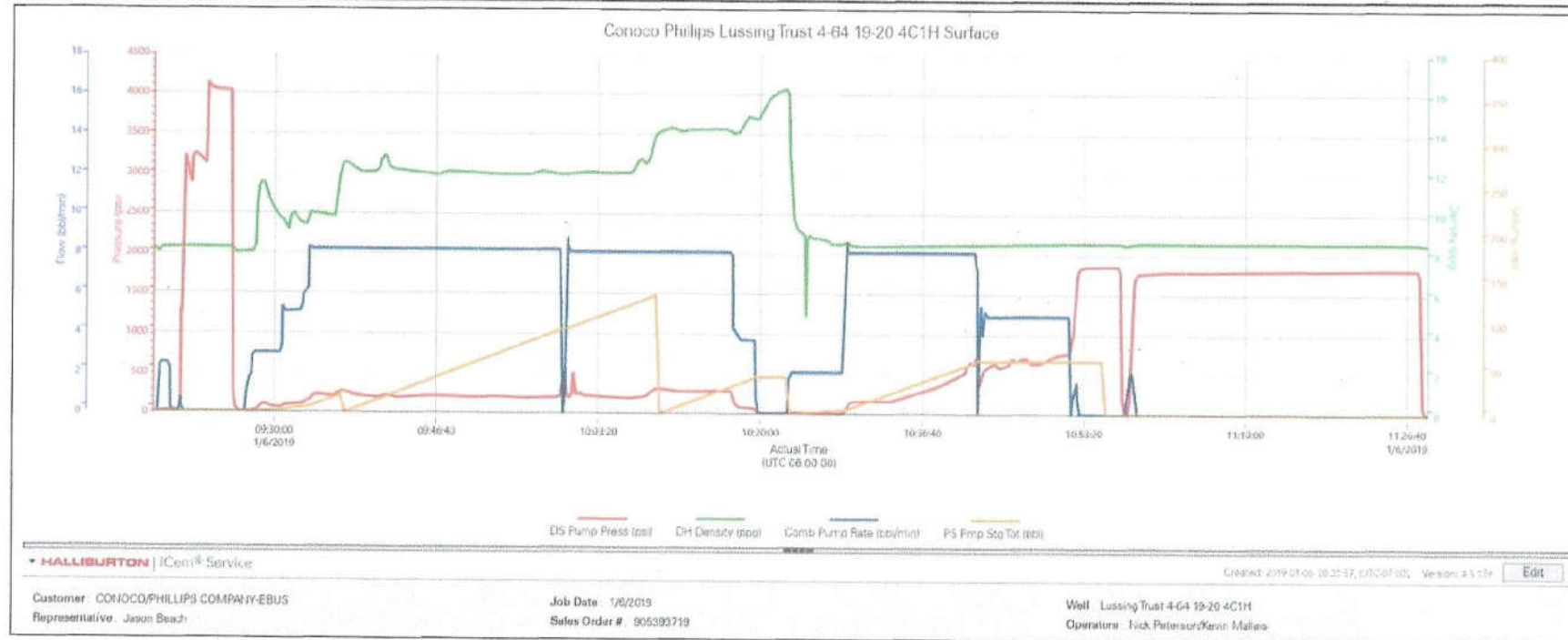
WE GOT 50 BBLS OF SPACER BACK AND 96 BBLS OF CEMENT TO SURFACE. ESTIMATED TOP OF TAIL CEMENT 1,402.7'.											
Event	22	Safety Meeting - Pre Rig-Down	Safety Meeting - Pre Rig-Down	1/6/2019	11:30:00	USER	-2.00	8.49	0.00	0.00	DISCUSSED POSSIBLE HAZARDS ASSOCIATED WITH WEATHER, LOCATION AND RIGGING DOWN IRON AND HOSES.
Event	23	Rig-Down Equipment	Rig-Down Equipment	1/6/2019	11:40:00	USER	-2.00	8.50	0.00	0.00	RIG DOWN BULK AND MIXING EQUIPMENT.
Event	24	Depart Location Safety Meeting	Depart Location Safety Meeting	1/6/2019	12:30:00	USER					CREW DISCUSSED ROUTES HAZARDS AND COMMUNICATION WITH CREW.
Event	25	Crew Leave Location	Crew Leave Location	1/6/2019	12:45:00	USER					THANK YOU FOR USING HALLIBURTON – NICK CUMMINS AND CREW.

2.0 Attachments

2.1 Cement Job With Events.png



2.2 Cement Job Without Events.png



The Road to Excellence Starts with Safety

Sold To #: 352431	Ship To #: 3917456	Quote #: 0022528964	Sales Order #: 0905393719
Customer: CONOCO/PHILLIPS COMPANY-EBUS		Customer Rep:	
Well Name: LUSSING TRUST 4-64 19-20	Well #: 4C1H	API/UWI #: 05-005-07392-00	
Field: WILDCAT	City (SAP): WATKINS	County/Parish: ARAPAHOE	State: COLORADO
Legal Description: NW SW-19-4S-64W-1861FSL-645FWL			
Contractor:		Rig/Platform Name/Num: Nabors B16	
Job BOM: 7521 7521			
Well Type: HORIZONTAL OIL			
Sales Person: HALAMERICA\HB41307		Srv Supervisor: Nicholas Cummins	
Job			

Formation Name			
Formation Depth (MD)	Top	125ft	Bottom 2208ft
Form Type			BHST
Job depth MD	2191.2ft		Job Depth TVD 0
Water Depth			Wk Ht Above Floor 4ft
Perforation Depth (MD)	From		To

Well Data

Description	New / Used	Size in	ID in	Weight lbm/ft	Thread	Grade	Top MD ft	Bottom MD ft	Top TVD ft	Bottom TVD ft
Casing		16	15.25				0	125		
Casing		9.625	8.921	36	STC	J-55	0	2191.2		
Open Hole Section			13.5				125	2191.2		

Tools and Accessories

Type	Size in	Qty	Make	Depth ft	Type	Size in	Qty	Make
Guide Shoe	9.625	1		2191.2	Top Plug	9.625	1	HES
					Bottom Plug	9.625	1	HES
Float Collar	9.625	1		2146.7	Plug Container	9.625	1	HES

Fluid Data

Stage/Plug #: 1

Fluid #	Stage Type	Fluid Name	Qty	Qty UoM	Mixing Density lbm/gal	Yield ft ³ /sack	Mix Fluid Gal	Rate bbl/min	Total Mix Fluid Gal
1	10 lb/gal Tuned Spacer III	Tuned Spacer III	50	bbl	10	8.82	60.40	8	
	38.40 gal/bbl								
	63.66 lbm/bbl								
		FRESH WATER							
		BARITE, BULK (100003681)							

Fluid #	Stage Type	Fluid Name	Qty	Qty UoM	Mixing Density lbm/gal	Yield ft3/sack	Mix Fluid Gal	Rate bbl/min	Total Mix Fluid Gal
2	SwiftCem	SWIFTCEM (TM) SYSTEM	495	sack	12	2.57		8	15.14
	94 lbm	TYPE I / II CEMENT, BULK (101439798)							
	6 lbm	ENHANCER 923, BULK (101894003)							
	2.30 %	ECONOLITE (100001580)							
	2 %	CAL-SEAL 60, 50 LB BAG (101217146)							
	0.20 %	VERSASET, 55 LB SK (101376573)							
	15.14 Gal	FRESH WATER							

Fluid #	Stage Type	Fluid Name	Qty	Qty UoM	Mixing Density lbm/gal	Yield ft3/sack	Mix Fluid Gal	Rate bbl/min	Total Mix Fluid Gal
3	SwiftCem	SWIFTCEM (TM) SYSTEM	255	sack	14.2	1.59		8	7.9
	94 lbm	CMT - PREMIUM - CLASS G REG OR TYPE V, BULK (100003685)							
	7.90 Gal	FRESH WATER							
	0.20 %	VERSASET, 55 LB SK (101376573)							
	6 lbm	ENHANCER 923, BULK (101894003)							
	2 %	CAL-SEAL 60, 50 LB BAG (101217146)							
	1.30 %	ECONOLITE (100001580)							

Fluid #	Stage Type	Fluid Name	Qty	Qty UoM	Mixing Density lbm/gal	Yield ft3/sack	Mix Fluid Gal	Rate bbl/min	Total Mix Fluid Gal
4	Displacement	Displacement	166	bbl	8.33			8	

Cement Left In Pipe		Amount	44.5 ft			Reason		Shoe Joint			
Mix Water:		pH 7	Mix Water Chloride:			<400 ppm		Mix Water Temperature:		50 °F	
			Plug Displaced by:			8.33 lb/gal		Disp. Temperature:		50 °F	
Plug Bumped?		Yes	Bump Pressure:			750 psi		Floats Held?		Yes	
Cement Returns:		96 bbl									

Comment

HALLIBURTON

iCem[®] Service

CONOCO/PHILLIPS COMPANY-EBUS

United States of America, COLORADO

For: Aron Negusse

Date: Sunday, February 03, 2019

ARAPAHOE

Conoco Lussing Trust 4-64 19-20 4C1H Production

Job Date: Sunday, February 03, 2019

Sincerely,

Steve Markovich

Legal Notice

Disclaimer:

All information in this report is provided subject to the terms and conditions which govern the services provided by Halliburton. Halliburton personnel use their best efforts in gathering information and their best judgment in interpreting it, but any interpretation, research, analysis or recommendation furnished by Halliburton are opinions based upon inferences from measurements and empirical relationships and assumptions, which inferences and empirical relationships and assumptions are not infallible, and with respect to which professionals in the industry may differ. iCem 3D Displacement results are used to understand how fluids intermix during a cement job. Simulation and 3D displacement results are not intended as and should not be used as a replacement for bond logs in determining top of cement. Current 3D model calculations are known to model more volume than the input volume for standard cases due to known calculation improvements required. For rotational cases, the modeled volume will be impacted by the same calculations impacting the standard cases, as well as additional constraints imposed to make the calculation time required operationally feasible. Therefore, until further notice, 3D displacement results should not be used for replacement of a bond log, or used as an identifier of top of cement. HALLIBURTON IS UNABLE TO GUARANTEE THE ACCURACY OF ANY CHART INTERPRETATION, RESEARCH ANALYSIS, OR JOB RECOMMENDATION and any interpretation or recommendation is not for use of or reliance upon by any third party. The customer has full responsibility for any of its decisions which are based on the information provided in this report.

Table of Contents

1.0 Cementing Job Summary 4

 1.1 Executive Summary4

2.0 Real-Time Job Summary 8

 2.1 Job Event Log8

3.0 Attachments..... 11

 3.1 Conoco Lussing Trust 4-64 19-20 4C1H Production -Custom Results.png.....11

1.0 Cementing Job Summary

1.1 Executive Summary

Halliburton appreciates the opportunity to perform the cementing services on the cement casing job. A pre-job safety meeting was held before the job where details of the job were discussed, potential safety hazards were reviewed, and environmental compliance procedures were outlined.

Approximately 24 bbls of Spacer were returned to surface.

Halliburton maintains a continuous quality improvement process and appreciates any comments or suggestions that you may have. Halliburton again thanks you for the opportunity to perform service work on this well. We hope to be your solutions provider for future projects.

Respectfully,

Halliburton Fort Lupton

The Road to Excellence Starts with Safety

Sold To #: 352431		Ship To #: 3917456		Quote #: 0022529060		Sales Order #: 0905451810				
Customer: CONOCO/PHILLIPS COMPANY-EBUS				Customer Rep: jason						
Well Name: LUSSING TRUST 4-64 19-20			Well #: 4C1H		API/UWI #: 05-005-07392-00					
Field: WILDCAT		City (SAP): WATKINS		County/Parish: ARAPAHOE		State: COLORADO				
Legal Description: NW SW-19-4S-64W-1861FSL-645FWL										
Contractor:				Rig/Platform Name/Num: Nabors B16						
Job BOM: 7523 7523										
Well Type: HORIZONTAL OIL										
Sales Person: HALAMERICA/HB41307				Srvc Supervisor: Steven Markovich						
Job										
Formation Name										
Formation Depth (MD)		Top				Bottom				
Form Type						BHST				
Job depth MD		18057ft				Job Depth TVD				
Water Depth						Wk Ht Above Floor				
Perforation Depth (MD)		From				To				
Well Data										
Description	New / Used	Size in	ID in	Weight lbm/ft	Thread	Grade	Top MD ft	Bottom MD ft	Top TVD ft	Bottom TVD ft
Casing		9.625	8.921	36	STC	J-55	0	2191		0
Casing		5.5	4.67	23	TXP-BTC	P-110	0	18057		0
Open Hole Section			8.5				2191	18073	0	0
Tools and Accessories										
Type	Size in	Qty	Make	Depth ft		Type	Size in	Qty	Make	
Guide Shoe	5.5			18057		Top Plug	5.5		HES	
Float Shoe	5.5					Bottom Plug	5.5		HES	
Float Collar	5.5					SSR plug set	5.5		HES	
Insert Float	5.5					Plug Container	5.5		HES	
Stage Tool	5.5					Centralizers	5.5		HES	
Fluid Data										
Stage/Plug #: 1										
Fluid #	Stage Type	Fluid Name	Qty	Qty UoM	Mixing Density lbm/gal	Yield ft³/sack	Mix Fluid Gal	Rate bbl/min	Total Mix Fluid Gal	
1	10.5 lb/gal Tuned Spacer III	Tuned Spacer III	60	bbl	10.5	6.7				
0.6670 gal/bbl		MUSOL(R) A, 5 GAL PAIL (100064220)								
0.1670 gal/bbl		D-AIR 3000L, 5 GAL PAIL (101007444)								

37.58 gal/bbl		FRESH WATER							
83.48 lbm/bbl		BARITE, BULK (100003681)							
0.6670 gal/bbl		DUAL SPACER SURFACTANT B, 5 GAL PAIL (100003665)							
Fluid #	Stage Type	Fluid Name	Qty	Qty UoM	Mixing Density lbm/gal	Yield ft3/sack	Mix Fluid Gal	Rate bbl/min	Total Mix Fluid Gal
2	ElastiCem	ELASTICEM (TM) SYSTEM	820	sack	13.2	1.57		6	7.54
24.50 lbm		POZMIX A FLYASH (100003690)							
0.20 %		HALAD(R)-344, 50 LB (100003670)							
61.10 lbm		TYPE I / II CEMENT, BULK (101439798)							
0.10 %		SA-1015, 50 LB SACK (102077046)							
7.54 Gal		FRESH WATER							
0.35 %		SCR-100 (100003749)							
5 lbm		WELLIFE 708 - 2000 LB BAG (807637)							
1 lbm		SILICALITE, COMPACTED - 2200 LB (870283)							
Fluid #	Stage Type	Fluid Name	Qty	Qty UoM	Mixing Density lbm/gal	Yield ft3/sack	Mix Fluid Gal	Rate bbl/min	Total Mix Fluid Gal
3	EconoCem	ECONOCEM (TM) SYSTEM	1530	sack	13.5	1.79		6	8.73
0.30 %		HR-5, 50 LB SK (100005050)							
8.73 Gal		FRESH WATER							
0.80 %		HALAD(R)-344, 50 LB (100003670)							
25 %		SS-200 - BULK (102240841)							
24.50 lbm		POZMIX A FLYASH (100003690)							
0.10 %		SA-1015, 50 LB SACK (102077046)							
61.10 lbm		TYPE I / II CEMENT, BULK (101439798)							
0.20 %		HALAD(R)-413, 50 LB (100003738)							
Fluid #	Stage Type	Fluid Name	Qty	Qty UoM	Mixing Density lbm/gal	Yield ft3/sack	Mix Fluid Gal	Rate bbl/min	Total Mix Fluid Gal
4	MMCR Displacement	MMCR Displacement	40	bbl	8.34				
0.50 gal/bbl		MICRO MATRIX CEMENT RETARDER, 5 GAL PAIL (100003781)							
Fluid #	Stage Type	Fluid Name	Qty	Qty UoM	Mixing Density lbm/gal	Yield ft3/sack	Mix Fluid Gal	Rate bbl/min	Total Mix Fluid Gal
5	Water	Water	357.29	bbl	8.33				

Cement Left In Pipe	Amount	80 ft		Reason	Shoe Joint	
Mix Water:	pH 07	Mix Water Chloride:	00 ppm	Mix Water Temperature:	54 °F °C	
Comment Pump 397.3bbls of H2O. First 40bbs with MMCR., then 357.3bbl with biocide and other chemicals. Pumped at 8bbl/min and slowed rate with pressure increase. Spacer to surface at 275bbs away, bringing 24bbs of spacer to surface. Pumped calculated displacement and did not bump plug. Pumped half of shoe track per company man request however we still dd not bump. Pumped 1 more bbl per company man request, still did not bump plug. After last attempt to bump plug we watch the pressure. Once pressure leveled off at 2020psi. We waited 5 mins and pressure increased 10psi. Opened release line to check floats, after 3bbls back floats held. Estimated Top of Tail Cement 6145' Estimated Top of Lead Cement is 791'.						

2.0 Real-Time Job Summary

2.1 Job Event Log

Type	Seq. No.	Activity	Graph Label	Date	Time	Source	DH Density (ppg)	DS Pump Press (psi)	Comb Pump Rate (bbl/min)	Pump Stg Tot (bbl)	Comments
Event	1	Call Out	Call Out	2/2/2019	18:00:00	USER					Job called out at 1800 with an on location time of 0000
Event	2	Crew Leave Yard	Crew Leave Yard	2/2/2019	22:00:00	USER					JSA with HES crew on directions and road hazards on the way to location
Event	3	Arrive At Loc	Arrive At Loc	2/2/2019	23:00:00	USER					Arrived on location, rig was ready for head and manifold.
Event	4	Assessment Of Location Safety Meeting	Assessment Of Location Safety Meeting	2/2/2019	23:15:00	USER					JSA and hazard hunt with HES crew
Event	5	Safety Meeting	Safety Meeting	2/3/2019	01:45:00	USER	0.02	-6.00	0.00	0.00	JSA with HES and rig crew on job safety and procedure.
Event	6	Start Job	Start Job	2/3/2019	03:09:35	COM4	8.32	-3.00	0.00	12.90	TD 18073' TP 18057' FC 17977' 5 1/2" 20# Production Casing, 8 1/2" Open hole, 9 5/8" 36# Surface Casing set at 2208', TVD 7115', Mud # 110ppg.
Event	7	Test Lines	Test Lines	2/3/2019	03:15:23	COM4	8.47	142.00	0.00	16.80	Set kick outs to 500psi and check low pressure kick outs, then bring pressure up to 6500psi and hold.
Event	8	Pump Spacer 1	Pump Spacer 1	2/3/2019	03:24:16	COM4	8.44	1.00	0.00	0.00	Pump 60bbls of 10.5ppg 6.7yield Tuned Spacer. Added 40 gallons of dual spacer and musol on the fly. Pumped at 4bbl/min 405psi.

Event	9	Drop Bottom Plug	Drop Bottom Plug	2/3/2019	03:36:23	USER	10.51	299.00	4.10	46.60	Plug loaded into HES head. Plug loaded and dropped in front of company rep.
Event	10	Pump Lead Cement	Pump Lead Cement	2/3/2019	03:40:27	COM4	13.06	592.00	7.50	66.10	Pump 229.29bbls (820sks) of 13.2ppg 1.57yield Lead Cement. Pumped at 8bbl/min 511psi.
Event	11	Check Weight	Check Weight	2/3/2019	03:41:59	COM4	13.47	336.00	8.10	11.90	Weight verified by pressurized scales.
Event	12	Pump Tail Cement	Pump Tail Cement	2/3/2019	04:12:19	COM4	13.26	350.00	8.00	0.10	Pump 487bbls (1530sks) of 13.5ppg 1.79yield Tail Cement. Pumped at 8bbl/min 395psi.
Event	13	Check Weight	Check Weight	2/3/2019	04:13:18	COM4	13.48	369.00	8.00	8.00	Weight verified by pressurized scales.
Event	14	Check Weight	Check Weight	2/3/2019	04:15:29	COM4	13.57	274.00	6.60	15.70	Weight verified by pressurized scales.
Event	15	Check Weight	Check Weight	2/3/2019	04:21:45	COM4	13.79	391.00	8.00	64.30	Weight verified by pressurized scales.
Event	16	Check Weight	Check Weight	2/3/2019	04:28:09	COM4	13.69	387.00	8.00	115.50	Weight verified by pressurized scales.
Event	17	Check Weight	Check Weight	2/3/2019	04:30:38	COM4	13.52	360.00	8.00	135.40	Weight verified by pressurized scales.
Event	18	Check Weight	Check Weight	2/3/2019	04:45:32	COM4	13.73	438.00	8.00	254.80	Weight verified by pressurized scales.
Event	19	Check Weight	Check Weight	2/3/2019	04:55:14	COM4	13.36	335.00	8.00	332.50	Weight verified by pressurized scales.
Event	20	Shutdown	Shutdown	2/3/2019	05:29:58	COM4	15.13	17.00	0.00	574.50	Shutdown and clean pumps and lines.
Event	21	Drop Top Plug	Drop Top Plug	2/3/2019	05:41:50	COM4	8.09	4.00	0.00	593.40	Plug loaded into HES head. Plug loaded and dropped in front of company rep.

Event	22	Pump Displacement	Pump Displacement	2/3/2019	05:41:53	COM4	8.09	4.00	0.00	0.00	Pump 397.3bbls of H2O. First 40bbs with MMCR then 357.3bbl with biocide and other checmicals on the fly. Pumped at 8bbl/min and slowed rate with pressure increase. Spacer to surface at 275bbs away, bringing 24bbs of spacer to surface.
Event	23	Other	Other	2/3/2019	06:41:11	USER	8.34	2721.00	4.10	421.70	Pumped calculated displacement and did not bump plug.
Event	24	Other	Other	2/3/2019	06:47:27	USER	8.31	2002.00	0.00	422.10	Pumped half of shoe track per company man request and still dd not pump.
Event	25	Other	Other	2/3/2019	06:58:42	USER	8.30	2011.00	0.00	424.80	Pumped 1 more bbl per company man request, still did not bump plug.
Event	26	Other	Other	2/3/2019	07:05:59	COM4	8.30	2023.00	0.00	427.80	After last attempt to bump plug we watch the pressure. Once pressure leveled off at 2020psi. We waited 5 mins and pressure increased 10psi. Opened release line to check floats, after 3bbls back floats held.
Event	27	End Job	End Job	2/3/2019	07:33:30	COM4	8.26	1.00	0.00	427.80	Thank you, Steve Markovich and crew

3.0 Attachments

3.1 Conoco Lussing Trust 4-64 19-20 4C1H Production -Custom Results.png

