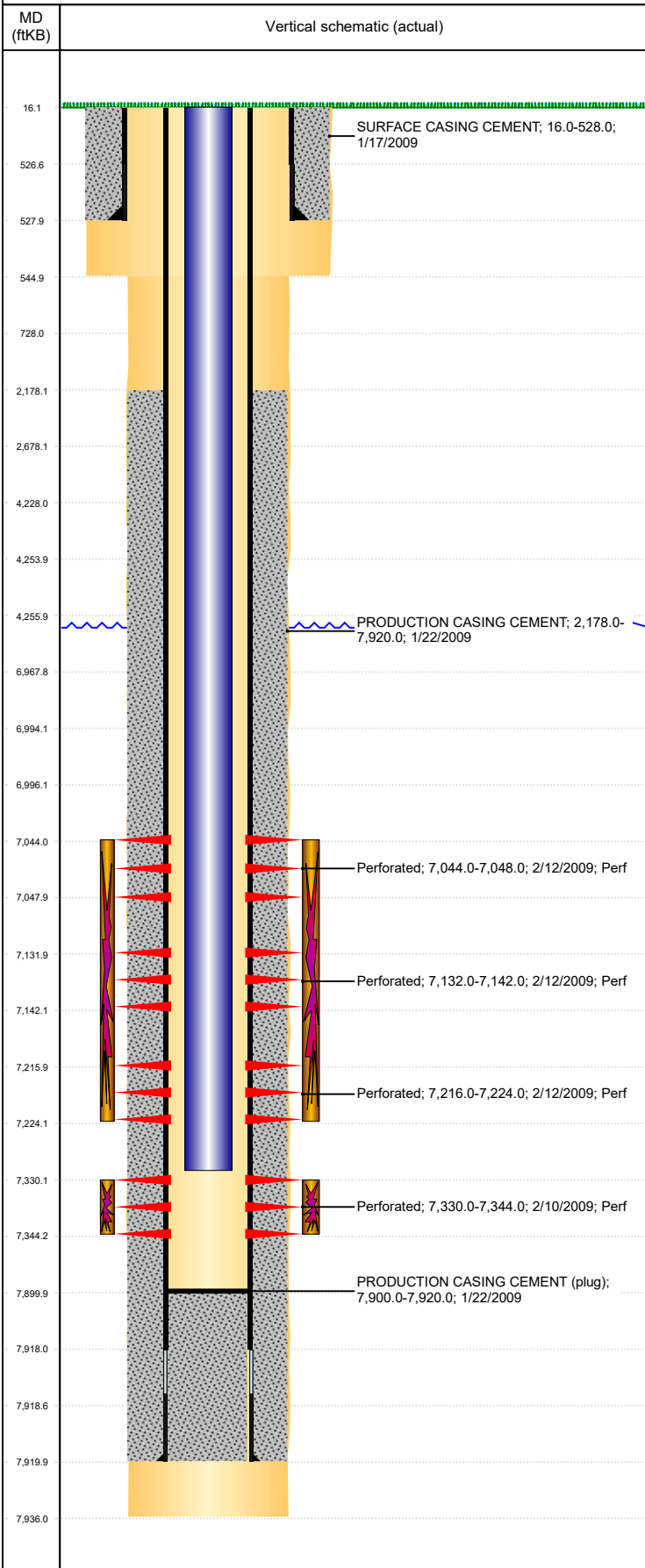


Well Name: BREHON 31-20

DEVIATED, ORIGINAL HOLE, 9/25/2019 9:36:19 AM



Well Header									
API 05-123-28156		Business Unit DJ BASIN			District 15		Well Config DEVIATED		
KB - GL / MSL (ft... 16.00		Spud Date 1/17/2009		P & A Date		Well Production Status PR			SoRT No
Comment DISCREPANCIES: SURF HOLE ON SCHEMATIC @ 545', SURF HOLE ON DRL RPTS @ 544'. TBG ON SCHEMATIC @ 7314', TBG ON DRL RPTS @ 7310'									
Surface Location (Congressional)									
Qtr 3 SW	Qtr 4 NW	Section 20	Twtnshp 4	Twtnsh... N	Range 65	Rng E/... W	Actual Latitude (°) 40.29933000		Actual Longitude (°) -104.69379000
Wellbore Sections									
Section Des			Size (in)			Act Top, MD (ftKB)		Act Btm, MD (ftKB)	
SURFACE			12 1/4			16		545	
PRODUCTION			7 7/8			545		7,936	
Casing Strings									
Csg Des		Run Date		OD (in)	Wt/Len (lb/ft)	Grade	Top, MD (ftKB)	MD (ftKB)	
Surface		1/17/2009		8 5/8	24.00	J-55	16.0	528.0	
Production		1/22/2009		4 1/2	11.60	I-80	16.0	7,920.0	
Cement									
Des				Start Date		Top (ftKB)		Btm (ftKB)	
SURFACE CASING CEMENT				1/17/2009		16.0		528.0	
PRODUCTION CASING CEMENT				1/22/2009		2,178.0		7,920.0	
Zone Statuses									
Zone Name		Status Date	Status	Fluid Type	Job			Prod Method	
CODELL		6/25/2009	PR		DRILLING/COMPLETION - ORIGINAL, 1/17/2009...				
NIOBRARA		6/25/2009	PR		DRILLING/COMPLETION - ORIGINAL, 1/17/2009...				
Perforation Data									
Linked Zone		Bnch/Stg	Entered Shot Total	Top (ftKB)		Btm (ftKB)		Date	
NIOBRARA, ORIGINAL HOLE		A	12	7,044.00		7,048.00		2/12/2009	
NIOBRARA, ORIGINAL HOLE		B	30	7,132.00		7,142.00		2/12/2009	
NIOBRARA, ORIGINAL HOLE		C	24	7,216.00		7,224.00		2/12/2009	
CODELL, ORIGINAL HOLE			56	7,330.00		7,344.00		2/10/2009	
Stimulation Intervals									
Zone			Start Date			Top (ftKB)		Btm (ftKB)	
NIOBRARA, ORIGINAL HOLE			2/12/2009			7,044.0		7,224.0	
CODELL, ORIGINAL HOLE			2/10/2009			7,330.0		7,344.0	
Other In Hole									
Run Date		Des				OD (in)	Top (ftKB)		Btm (ftKB)
4/5/2019		Plunger Lift				1 7/8			
Logs									
Date		Type				Top, MD (ftKB)		Btm, MD (ftKB)	
1/21/2009		COMPENSATED DENSITY				2,540.0		7,932.0	
1/21/2009		INDUCTION				527.0		7,952.0	
2/10/2009		CBL/CCL/GR				1,155.0		7,898.0	
Plug Back Total Depths									
Date		Type		Com				Depth (ftKB)	
2/10/2009		FILL		DEPTH LOGGER ON CBL				7,900.0	