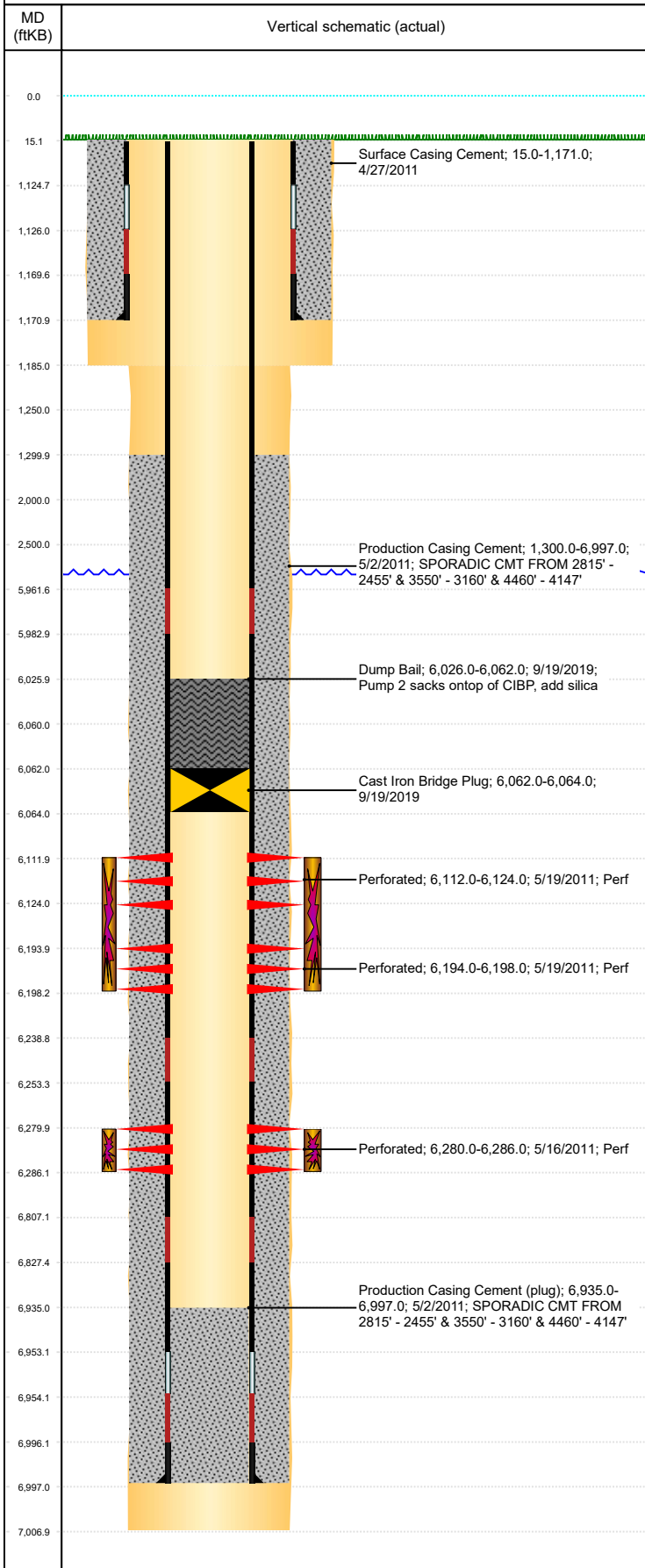


Well Name: PETERSON PC LG19-06

VERTICAL, ORIGINAL HOLE, 9/25/2019 9:29:30 AM



| Well Header | | | | | | | | | |
|----------------------------------|-------------|---|--------------|-----------------------|---|------------------------------|--|---------------------------------------|-----------------|
| API 05-123-33378 | | Business Unit DJ BASIN | | | District 25 | | Well Config VERTICAL | | |
| KB - GL / MSL (ft... 15.00 | | Spud Date 4/26/2011 | | P & A Date | | Well Production Status PR | | | SoRT No |
| Comment ** TIGHT HOLE WELL ** | | | | | | | | | |
| Surface Location (Congressional) | | | | | | | | | |
| Qtr 3 SE | Qtr 4 NW | Section 19 | Twtnshp 8 | Twtnsh... N | Range 59 | Rng E... W | Actual Latitude (°) 40.64980882 | Actual Longitude (°) -104.02260106 | |
| Wellbore Sections | | | | | | | | | |
| Section Des | | | Size (in) | | | Act Top, MD (ftKB) | | Act Btm, MD (ftKB) | |
| SURFACE | | | 12 1/4 | | | 15 | | 1,185 | |
| PRODUCTION | | | 7 7/8 | | | 1185 | | 7,007 | |
| Casing Strings | | | | | | | | | |
| Csg Des | | | Run Date | | OD (in) | Wt/Len (lb/ft) | Grade | Top, MD (ftKB) | MD (ftKB) |
| Surface | | | 4/27/2011 | | 8 5/8 | 24.00 | J-55 | 15.1 | 1,171.0 |
| PRODUCTION | | | 5/1/2011 | | 4 1/2 | 11.60 | M-80 | 15.1 | 6,997.0 |
| Cement | | | | | | | | | |
| Des | | | | | Start Date | | Top (ftKB) | | Btm (ftKB) |
| Surface Casing Cement | | | | | 4/27/2011 | | 15.0 | | 1,171.0 |
| Production Casing Cement | | | | | 5/2/2011 | | 1,300.0 | | 6,997.0 |
| Dump Bail | | | | | 9/19/2019 | | 6,026.0 | | 6,062.0 |
| Zone Statuses | | | | | | | | | |
| Zone Name | | Status Date | | Status | Fluid Type | | Job | | Prod Method |
| CODELL | | 5/27/2011 | | PR | | | DRILLING/COMPLETION - ORIGINAL, 4/25/2011... | | |
| NIORBARA | | 5/27/2011 | | PR | | | DRILLING/COMPLETION - ORIGINAL, 4/25/2011... | | |
| Perforation Data | | | | | | | | | |
| Linked Zone | | | Bnch/Stg | Entered Shot Total | | Top (ftKB) | | Btm (ftKB) | Date |
| NIORBARA, ORIGINAL HOLE | | | B | 24 | | 6,112.00 | | 6,124.00 | 5/19/2011 |
| NIORBARA, ORIGINAL HOLE | | | C | 8 | | 6,194.00 | | 6,198.00 | 5/19/2011 |
| CODELL, ORIGINAL HOLE | | | | 24 | | 6,280.00 | | 6,286.00 | 5/16/2011 |
| Stimulation Intervals | | | | | | | | | |
| Zone | | | | Start Date | | Top (ftKB) | | Btm (ftKB) | |
| NIORBARA, ORIGINAL HOLE | | | | 5/19/2011 | | 6,112.0 | | 6,198.0 | |
| CODELL, ORIGINAL HOLE | | | | 5/19/2011 | | 6,280.0 | | 6,286.0 | |
| Other In Hole | | | | | | | | | |
| Run Date | | Des | | | | OD (in) | Top (ftKB) | Btm (ftKB) | |
| 9/19/2019 | | Cast Iron Bridge Plug | | | | 3.99 | 6,062.0 | 6,064.0 | |
| Logs | | | | | | | | | |
| Date | | Type | | | | | Top, MD (ftKB) | | Btm, MD (ftKB) |
| 4/30/2011 | | SPECTRAL DENSITY/Pe/DSN NEUTRON/SP/ARRAY COMPENSATED TRUE RESISTIVITY/SONIC (BSAT) | | | | | 1,163.0 | | 6,921.0 |
| 4/30/2011 | | SPECTRAL GAMMA RAY | | | | | 1,163.0 | | 6,921.0 |
| 5/10/2011 | | CBL/CCL/GR | | | | | 990.0 | | 6,934.0 |
| 9/19/2019 | | GYRO | | | | | 15.0 | | 6,000.0 |
| Plug Back Total Depths | | | | | | | | | |
| Date | | Type | | | Com | | | | Depth (ftKB) |
| 6/13/2011 | | FILL | | | LEAVING 608' OF RATHOLE BELOW BOTTOM CODELL PERF. | | | | 6,894.0 |
| 10/24/2014 | | FILL | | | 571' OF RAT HOLE | | | | 0.0 |