

31 Operating LLC
Temporary Abandonment Procedure

Well Information

Well Name: Ant Hill Unit 12-33
 API No.: 05-103-10234
 Location: NWSE Sec 12, T2N, R97W
 Elevation: GL @ 6,506' / KB @ 6,518'
 TD: 7,525'
 PBTD: 7,440'
 Surf. Csg: 8 5/8", 24#, ST&C @ 1,118'
 Prod. Csg.: 5 1/2", 17#, N80, LTC @ 7,520'
 Perfs: 6,540 - 7,374' OA (Williams Fork)

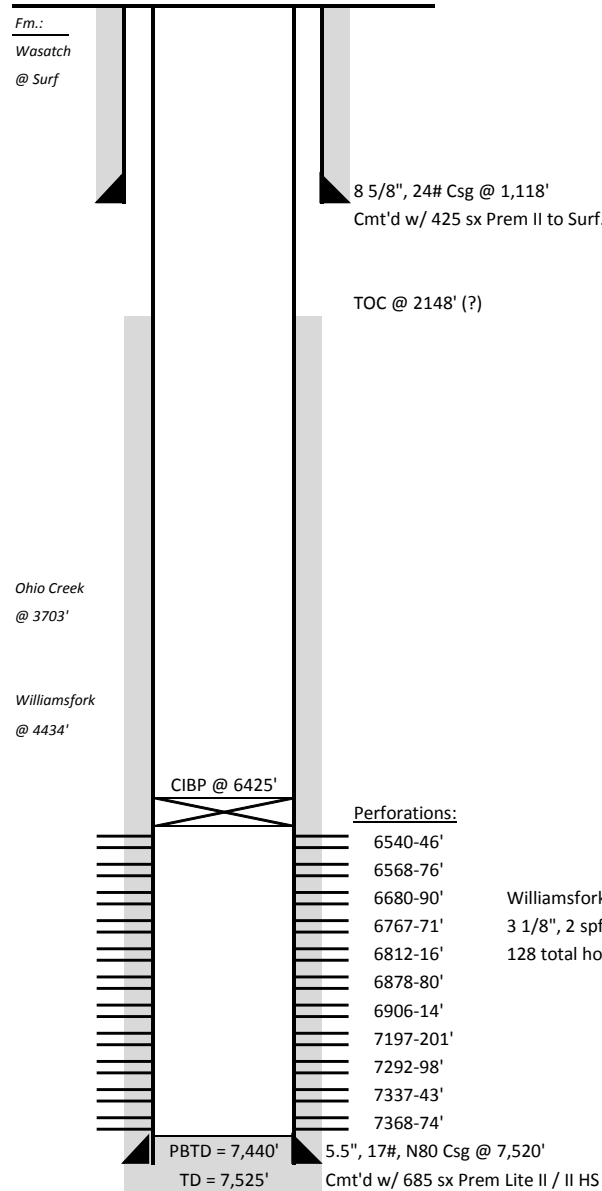
Procedure

1. Inspect location & prepare for equipment.
2. MIRU WL unit, lubricator & associated equip.
3. RIH w/ dump bailer & dump 4 sx cmt on top of CIBP
4. POH & RDMO WL unit and associated equip.
5. MIRU pump truck and perform MIT
 Pressure test csg to 600 psig f/ 15 mins.
6. RDMO pump truck - Well is TA'd

Future Potential

Log analysis indicates potential behind pipe pay in the upper Williamsfork / lower Ohio Creek formation. See log sections and volumetric gas in place calculations. Current gas prices do not economically support adding this pay at this time. When gas prices rise about \$3.50/MMbtu this pay add will be viable and 31 Operating will effort to bring this interval to production.

CURRENT WELLBORE DIAGRAM



PROPOSED WELLBORE POST TA

